



MANGUSTA 72



BROKER'S COMMENTS

This Mangusta 72 is an Italian built performance sport yacht and one of the most popular open yachts on the market. Aesthetically attractive she is perfect for fun fast cruising in the sun. Arneson Surface Drives make her very responsive and she can be managed with minimal crew. Capable of reaching a maximum speed of 36 knots thanks to her Twin MTU 1500 Hp engines this yacht is also easy to maneuver. Accommodation is provided for 7 guests in 3 cabins all with ensuite bathrooms. On the main deck she offers an open salon with an entertainment center and bar plus 2 sunbathing pads.

Valerio Biondi

SPECIFICATIONS

Dimensions	22.00 x 5.60 x 1.80 (m)	Builder	Overmarine
Built	2007	Cabins	3
Material	GRP	Berths	7
Engine(s)	2 x MTU diesel	Hp/Kw	2 x 1,530.00 (hp), 1,124.55 (kw)
Asking price	€ 680.000 (VAT Not paid)	Lying	contact Antibes

CONTACT

Sales office	De Valk Antibes	Telephone	+33 492 91 0202
Address	2, Avenue de Verdun 06600 Antibes FR	E-mail	antibes@devalk.nl

DISCLAIMER

These particulars are given in good faith as supplied but cannot be guaranteed.



GENERAL

Model	MANGUSTA 72
Type	motor yacht
LOA (m)	22,00
Beam (m)	5,60
Draft (m)	1,80
Year built	2007
Builder	Overmarine
Country	Italy
Displacement (t)	49
Hull material	GRP
Hull colour	white
Deck material	teak
Antifouling (year)	Coppercoat:10years
Radar arch	
Steadying sail with mast	2 Sails
Fuel tank (litre)	3500
Level indicator (fuel tank)	yes
Freshwater tank (litre)	
Blackwater tank (litre)	
Level indicator (blackwater)	yes
Greywater tank (litre)	
Level indicator (greywater)	yes
Inside helm position	yes

ACCOMMODATION

Cabins	3
Berths	7
Crew cabin	1
Crew berths	2
Pilot house/deck saloon	yes



Saloon	With a large U-shaped sofa and a table
Heating	
Air-conditioning	reverse cycle airco
Dinette	yes
Galley	yes
Countertop	
Sink	
Cooker	induction MIELE
Oven	yes
Microwave	yes
Fridge	yes
Freezer	yes
Hot water system	70L
Dishwasher	yes
Owners cabin	double bed With a seat
Wardrobe	hanging/drawers/shelves
Bathroom	en suite
Toilet	en suite
Wash basin	in the bathroom
Shower	en suite
Guest cabin 1	double bed
Wardrobe	hanging/drawers/shelves
Bathroom	en suite
Toilet	en suite
Wash basin	in the bathroom
Shower	en suite
Guest cabin 2	twin single
Wardrobe	hanging/drawers/shelves
Bathroom	en suite
Toilet	en suite
Wash basin	in the bathroom
Shower	en suite



Crew cabin(s)	1
Bathroom (crew)	1
Washing machine	Bosh

MACHINERY

No of engines	2
Make	MTU
HP	1530
kW	1124.55
Fuel	diesel
Maximum speed (kn)	36
Cruising speed (kn)	32
Range (nm)	320
Engine hours	750
Drive	surface drive
Bowthruster	
Manual bilge pump	yes
Electric bilge pump	yes
Bilge alarm	yes
Electrical installation	240V
Generator	4,5 Amp/h
Batteries	yes
Service battery	400 A Gel 4
Inverter	yes
Shorepower	
Watermaker	2000L

NAVIGATION

Compass	yes
Depth sounder/log	yes
VHF	Raymarine



Autopilot	yes
GPS	yes
Radar/GPS	Raymarine
Radar/GPS/plotter	yes
EPIRB	yes

EQUIPMENT

Fixed windscreen	yes
Fixed hardtop	yes
Cockpit table	yes
Cockpit chairs	yes
Bathing platform	yes
Boarding ladder	aluminum
Bow ladder	yes
Gangway	Hydraulic
Deck shower	yes
Anchor	Anchor 1
Anchor chain	100m : chain
Anchor 2	Anchor 2
Anchor chain	100m:rop /10m: ch
Windlass	
Capstan	yes
Dinghy	
Outboard	yes
TV	Philips 51x30cm
TV receiver	yes
Radio-cd player	yes
Cockpit speakers	yes



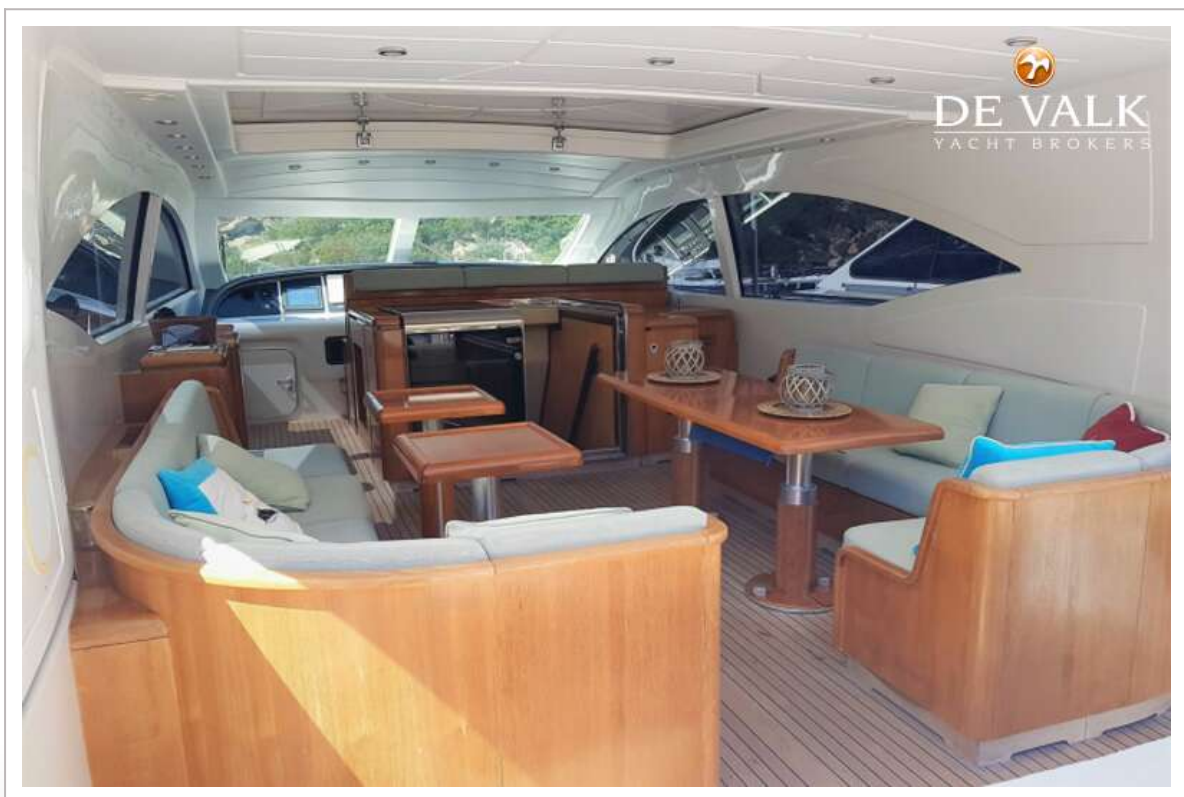
MANGUSTA 72



MANGUSTA 72



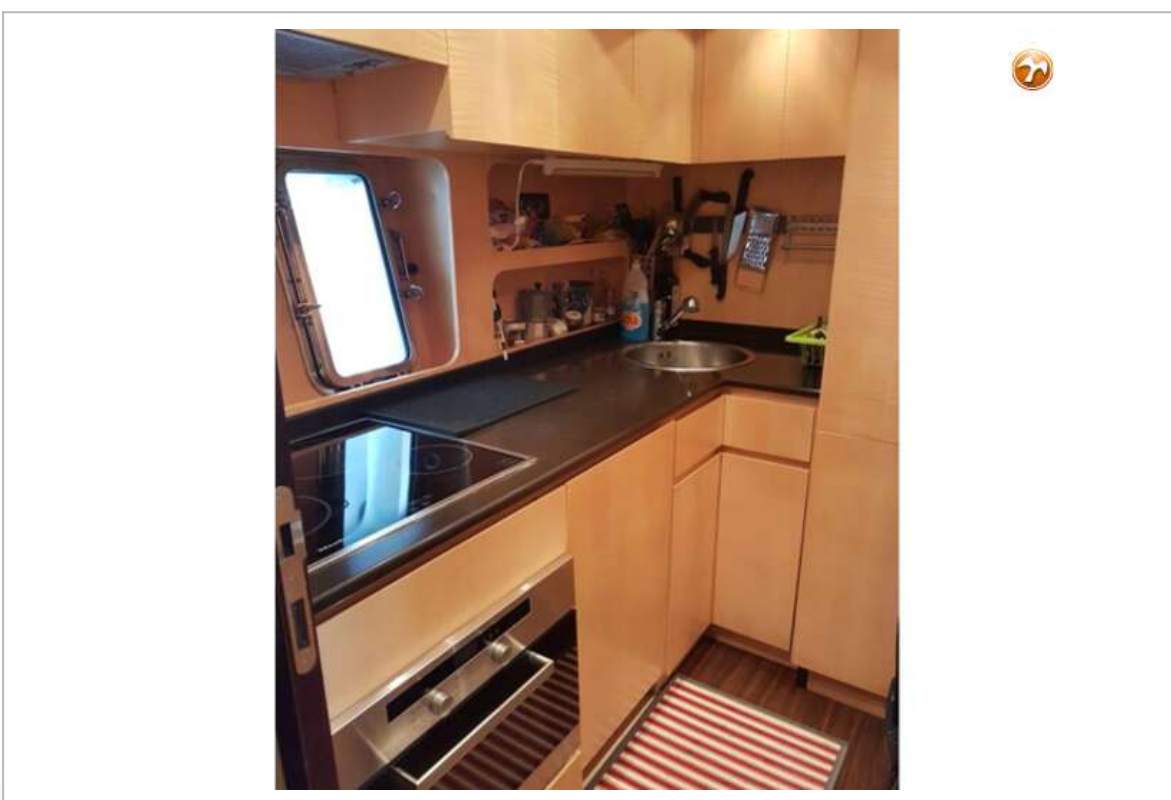
MANGUSTA 72

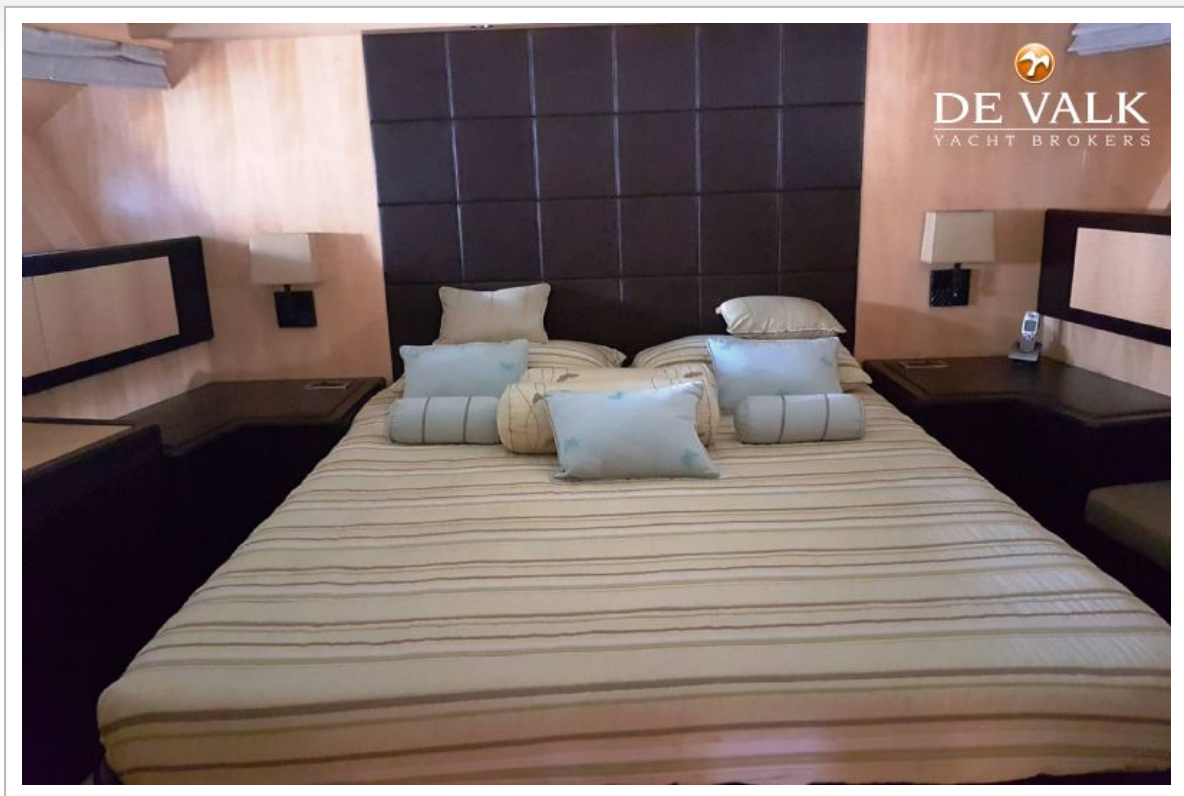


MANGUSTA 72

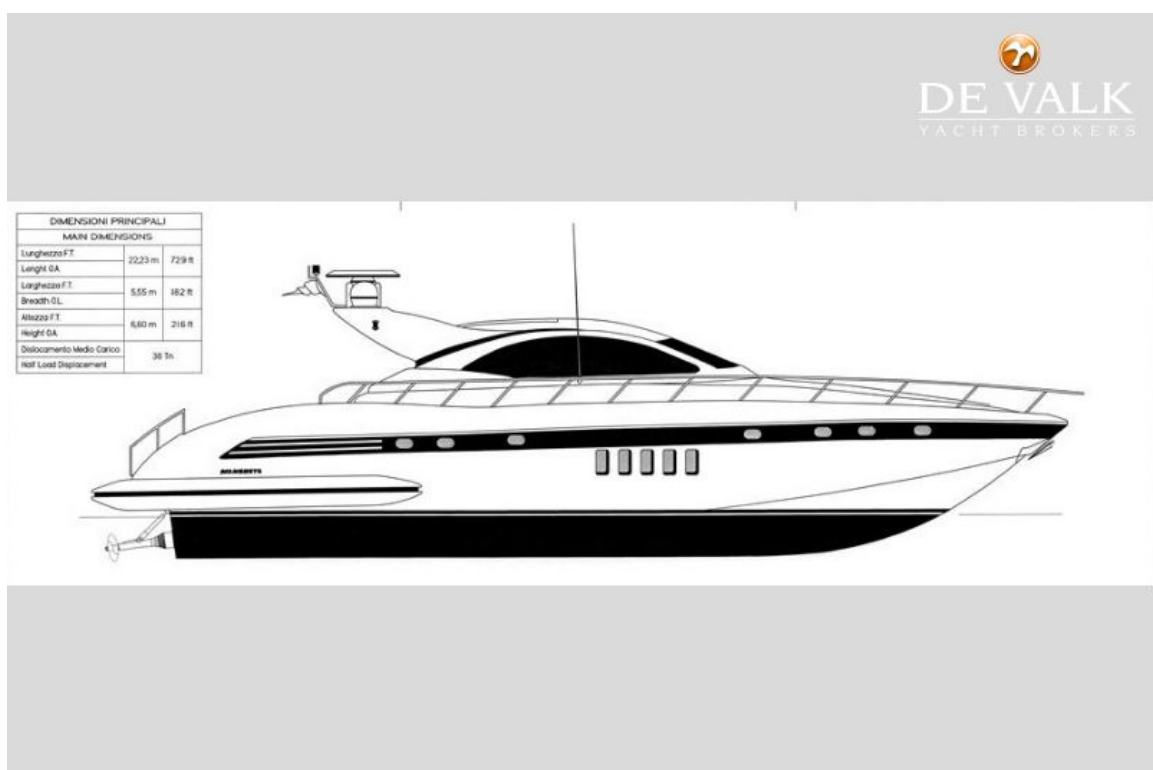


MANGUSTA 72





MANGUSTA 72



MANGUSTA 72

