



DE VALK
YACHT BROKERS



DE VRIES LENTSCH 28M



DE VALK
YACHT BROKERS

DE VRIES LENTSCH 28M

BROKER'S COMMENTS

This canoe stern motor yacht designed by De Vries Lentsch has been built by the Italian shipyard Conavi. With a white hull in steel, this classic and elegant yacht is offering many different spaces onboard. This De Vries 28m is able to cross Atlantic with a range over 2.600 nm. With a superb full beam aft master cabin and 3 other guest cabins, this De Vries is comfortable and perfect for living onboard. In top condition after her refit in 2018, she must be seen.

Hans Visser

SPECIFICATIONS

Dimensions	28.00 x 6.51 x 2.80 (m)	Builder	De Vries Carp Navi
Built	1982	Cabins	4
Material	Steel	Berths	8
Engine(s)	2 x Cummins KTA 11-50 M diesel	Hp/Kw	2 x 500.00 (hp), 367.50 (kw)
Asking price	sold (VAT)	Lying	contact Antibes

CONTACT

Sales office	De Valk Amsterdam B.V.	Telephone	+31 (0)35 5829014
Address	Marinaweg 8 (postal address) 1361 AC Almere NL	E-mail	amsterdam@devalk.nl

DISCLAIMER

These particulars are given in good faith as supplied but cannot be guaranteed.



DE VRIES LENTSCH 28M

GENERAL

Model	DE VRIES LENTSCH 28M
Type	motor yacht
LOA (m)	28,00
Beam (m)	6,51
Draft (m)	2,80
Year built	1982
Builder	De Vries Carp Navi
Country	Italy
Designer	Willem De Vries
Displacement (t)	139
Gross tonnage	139,18
Net tonnage	85
CE norm	NA
Hull material	steel
Hull colour	white Fully painted in 2018
Deck material	teak
Flybridge	yes
Fuel tank (litre)	36.500
Level indicator (fuel tank)	yes
Freshwater tank (litre)	8.700
Level indicator (freshwater)	yes
Blackwater tank (litre)	2.000
Inside helm position	yes
Outside helm position	yes

ACCOMMODATION

Cabins	4
Berths	8
Crew cabin	2
Crew berths	4



DE VRIES LENTSCH 28M

Floor	carpet
Pilot house	yes
Saloon	yes
Air-conditioning	reverse cycle airco
Galley	yes
Countertop	stainless steel
Sink	stainless steel
Cooker	induction
Oven	iLive
Microwave	yes
Fridge	4
Freezer	2
Hot water system	yes
Dishwasher	Miele
Ice maker	Isotherm
Coffee maker	Lavazza
Owners cabin	yes
Wardrobe	yes
Bathroom	yes
Toilet	yes
Wash basin	yes
Shower	yes
Guest cabin 1	yes
Wardrobe	yes
Bathroom	yes
Toilet	yes
Wash basin	yes
Shower	yes
Guest cabin 2	yes
Wardrobe	yes
Bathroom	yes
Toilet	yes



Wash basin	yes
Shower	yes
Guest cabin 3	yes
Wardrobe	yes
Bathroom	yes
Toilet	yes
Toilet system	yes
Wash basin	yes
Shower	yes
Crew cabin(s)	yes
Bathroom (crew)	yes
Toilet (crew)	yes
Wash basin	yes
Shower (crew)	yes
Washing machine	yes

MACHINERY

No of engines	2
Make	Cummins
Type	KTA 11-50 M
HP	500
kW	367,50
Fuel	diesel
Maximum speed (kn)	13
Cruising speed (kn)	10
Consumption (l/hr)	90
Range (nm)	2600
Propeller type	fixed
Electric bilge pump	yes
Bilge alarm	yes
Generator	Onan Cummins 2004



Generator 2	Onan Cummins 2004
Batteries	yes
Battery charger	yes
Shorepower	yes
Watermaker	yes

NAVIGATION

Compass	yes
Depth sounder	Furuno
Log	Furuno
Windset	yes
VHF	yes
VHF handheld	yes
Autopilot	yes
Radar/GPS/plotter	Furuno 2x
EPIRB	yes

EQUIPMENT

Cockpit table	yes
Cockpit chairs	yes
Boarding ladder	yes
Gangway	yes
Deck shower	yes
Anchor	yes
Anchor chain	yes
Anchor 2	yes
Anchor chain	yes
Windlass	yes
Capstan	yes
Dinghy	BSC 4.7M 2017
Outboard	yes



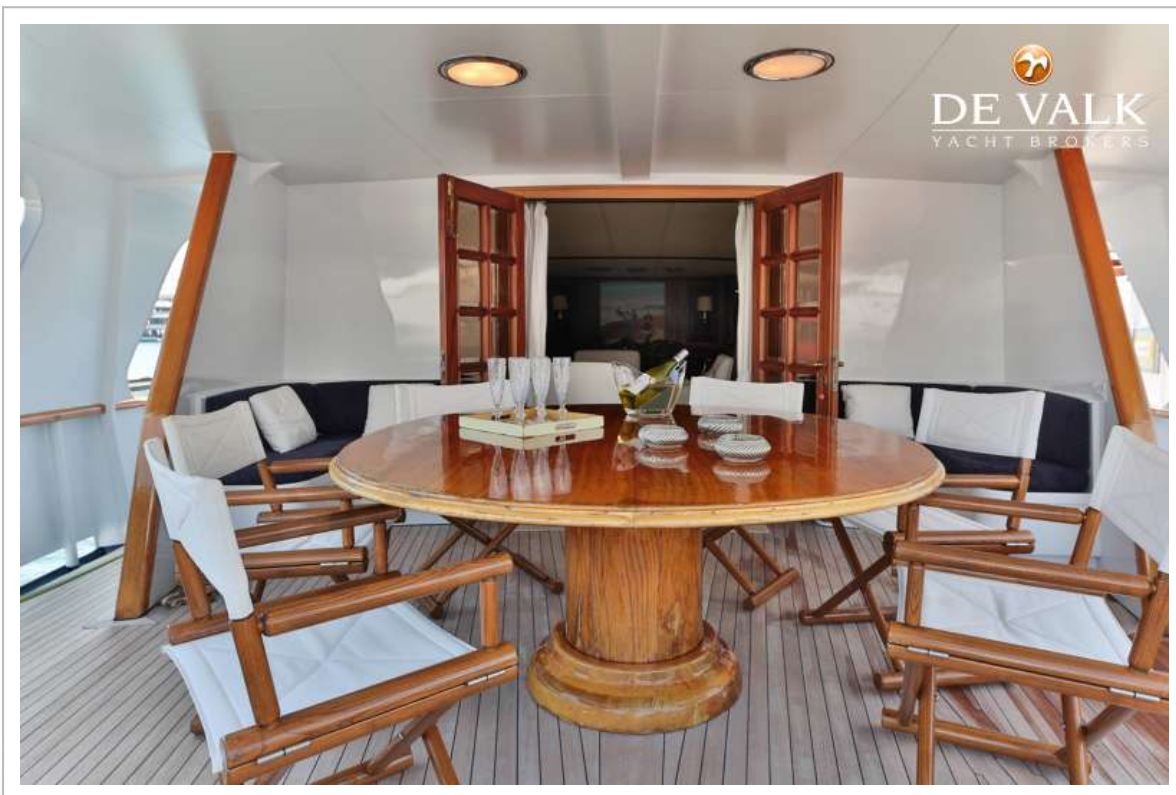
Deck crane	yes
Life raft	yes
Lifejackets	yes
TV	LG
Satellite	yes
DVD player	yes
Speakers in salon	yes
Fire extinguisher	yes



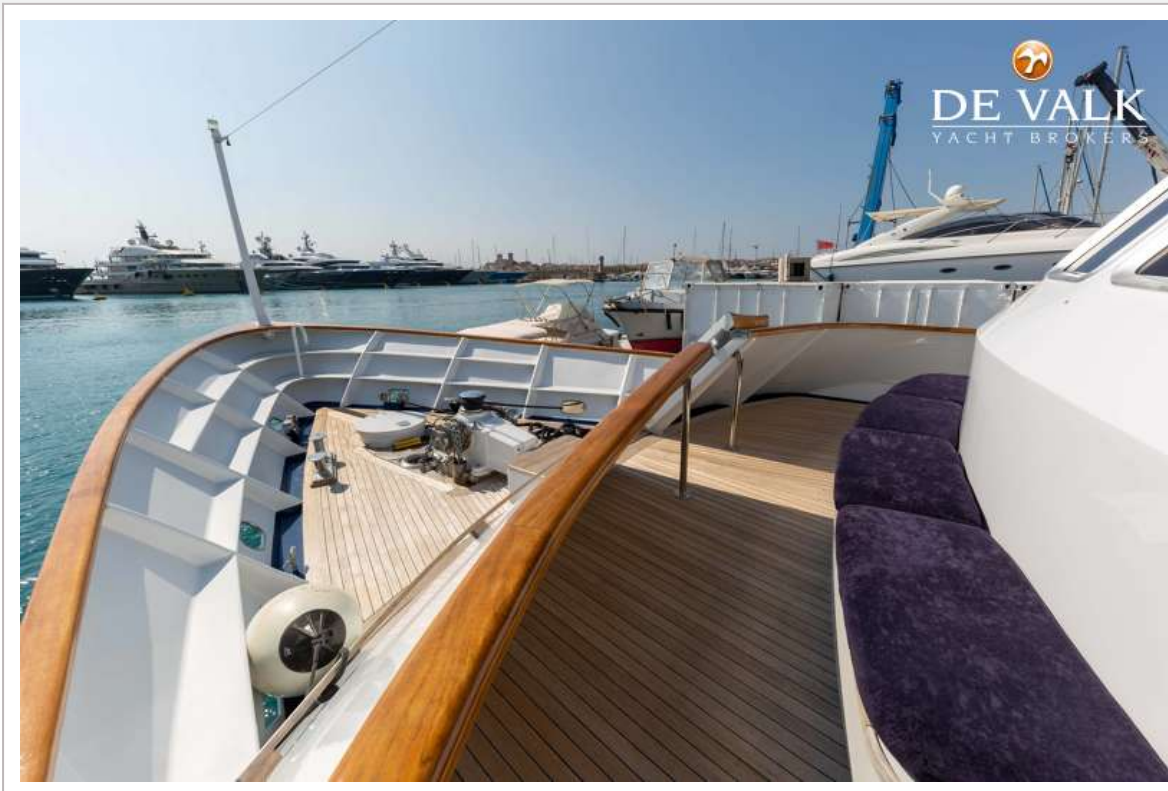
DE VRIES LENTSCH 28M



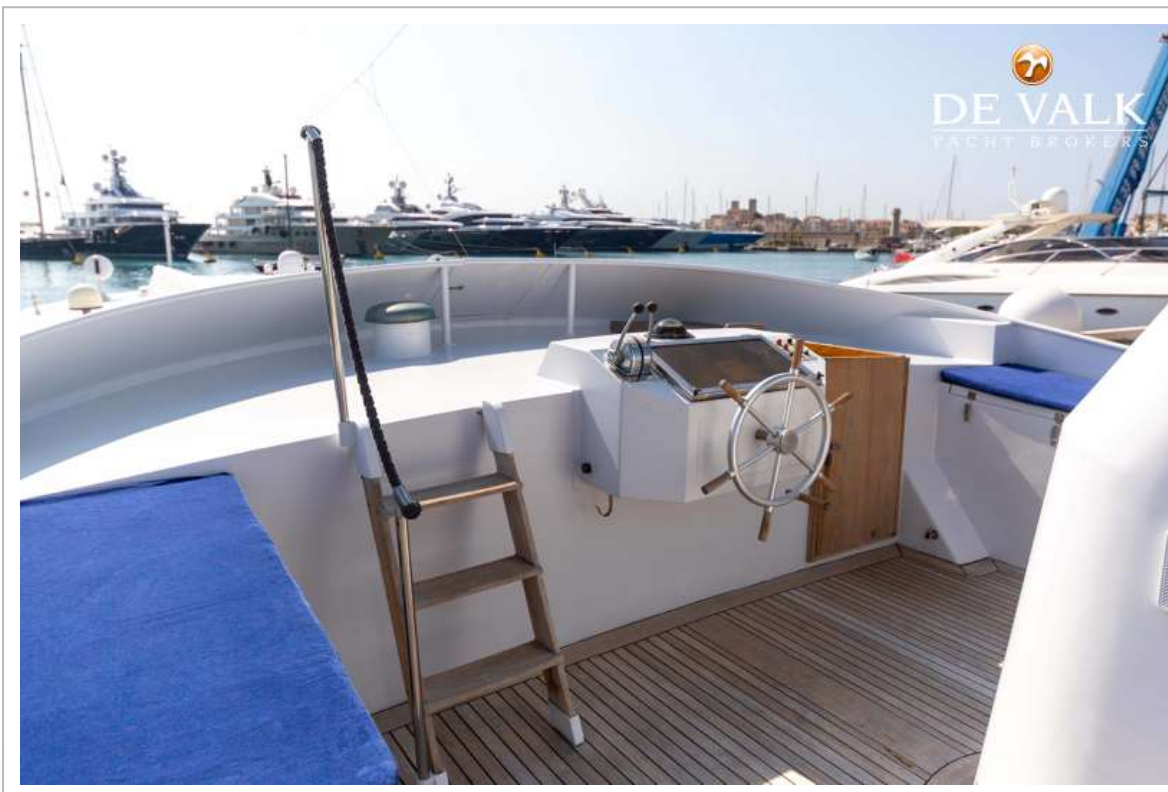
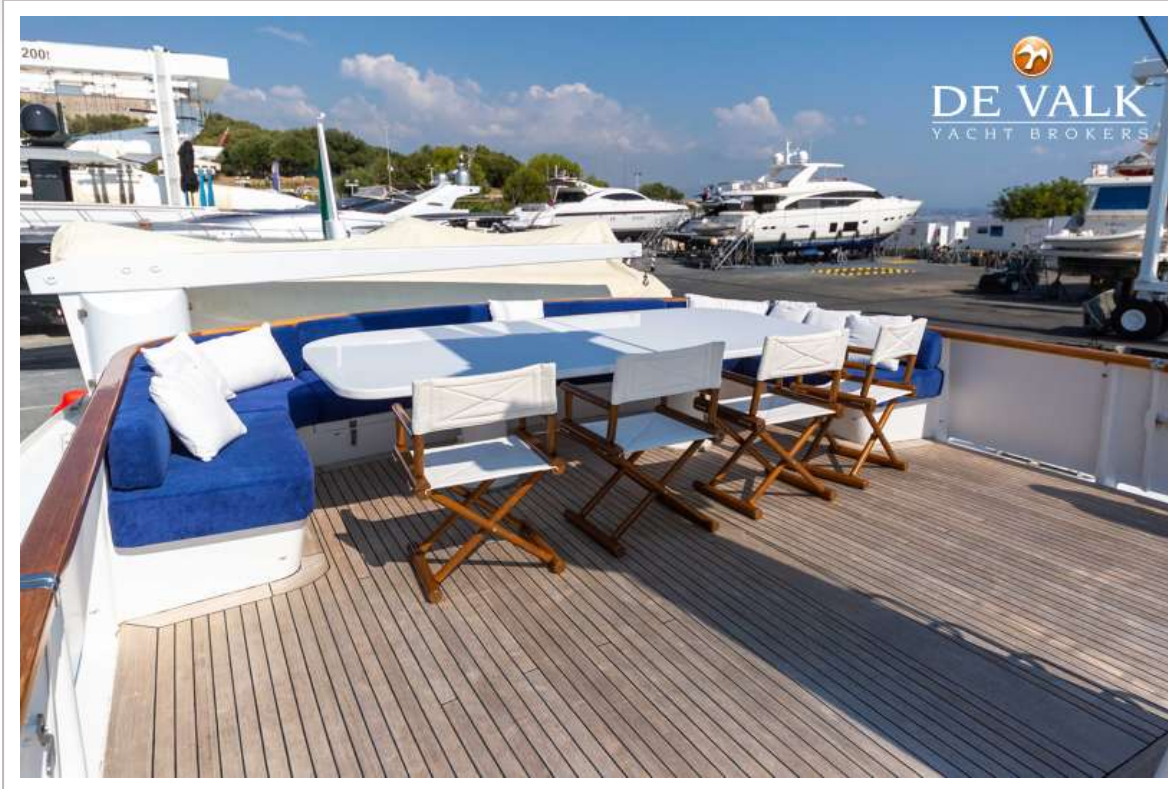
DE VRIES LENTSCH 28M



DE VRIES LENTSCH 28M



DE VRIES LENTSCH 28M



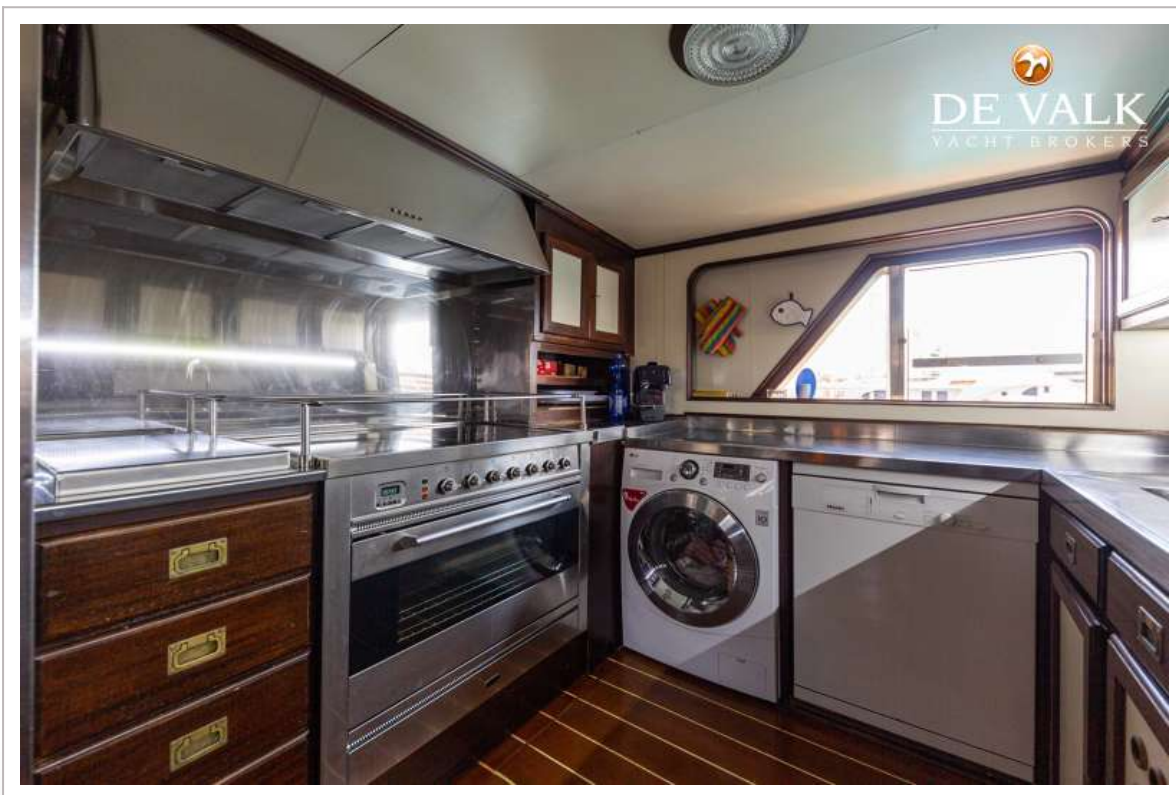
DE VRIES LENTSCH 28M



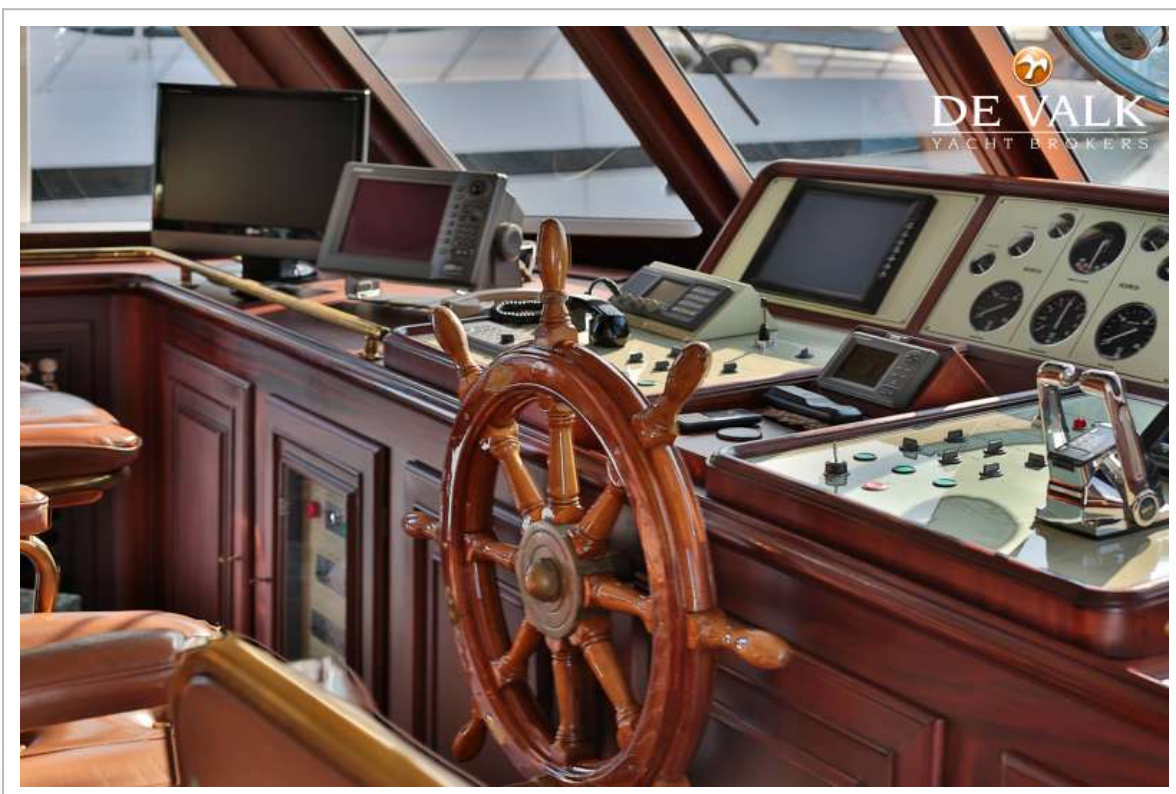
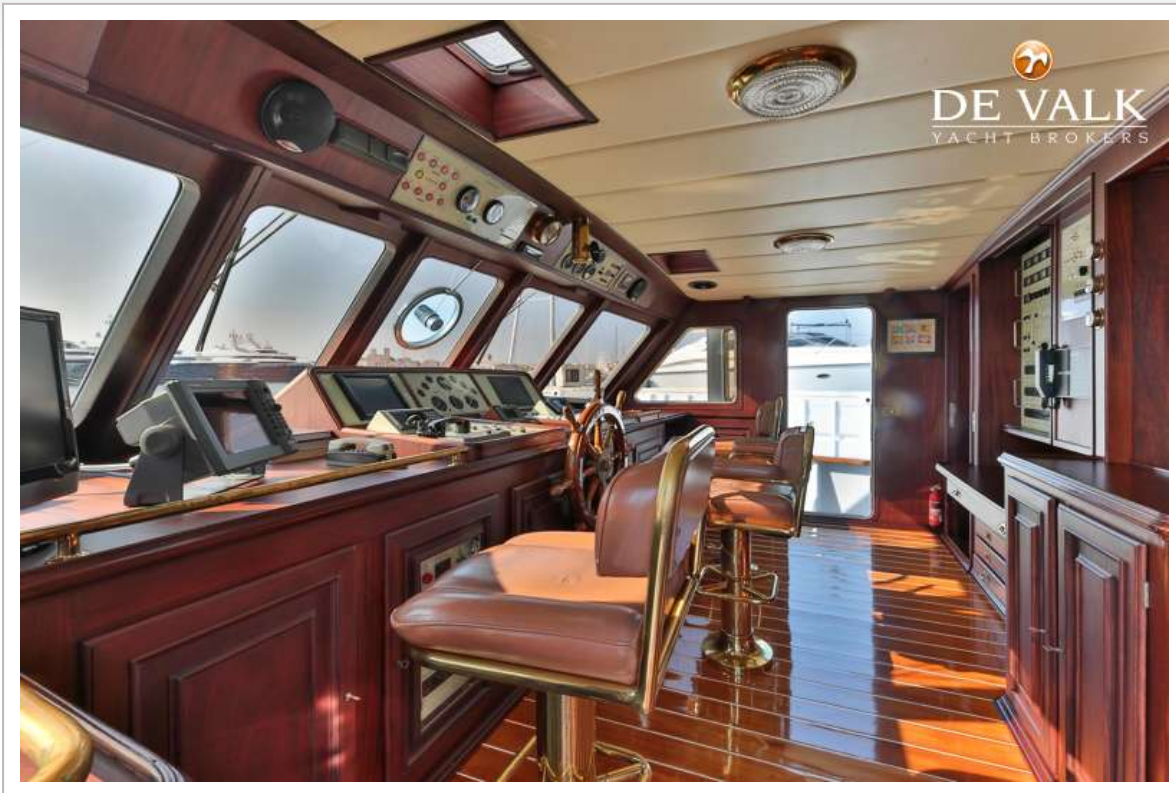
DE VRIES LENTSCH 28M



DE VRIES LENTSCH 28M



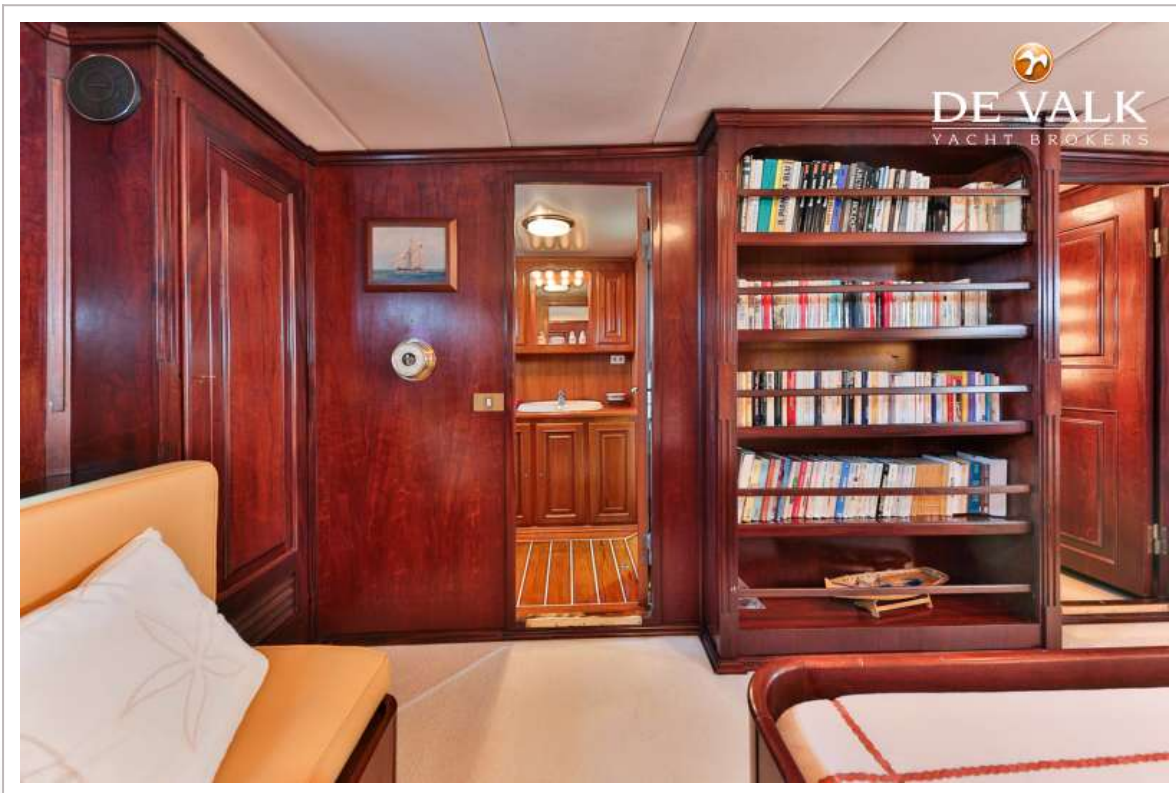
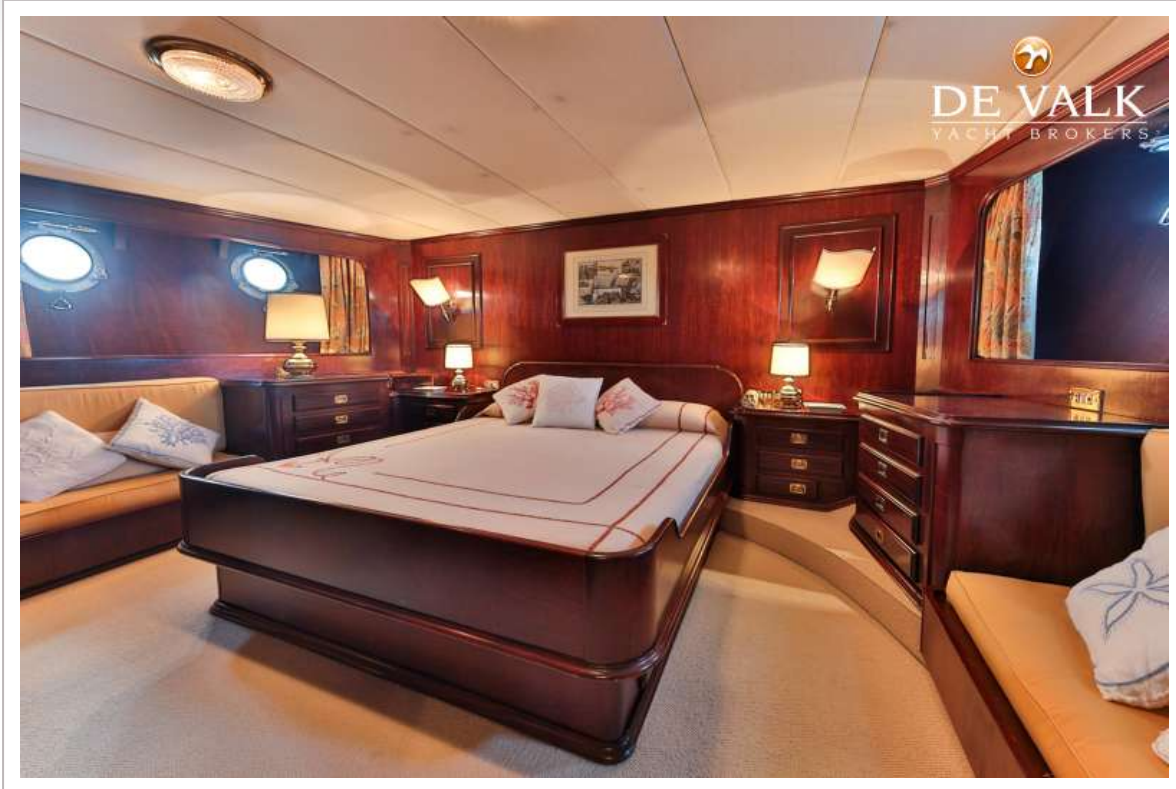
DE VRIES LENTSCH 28M



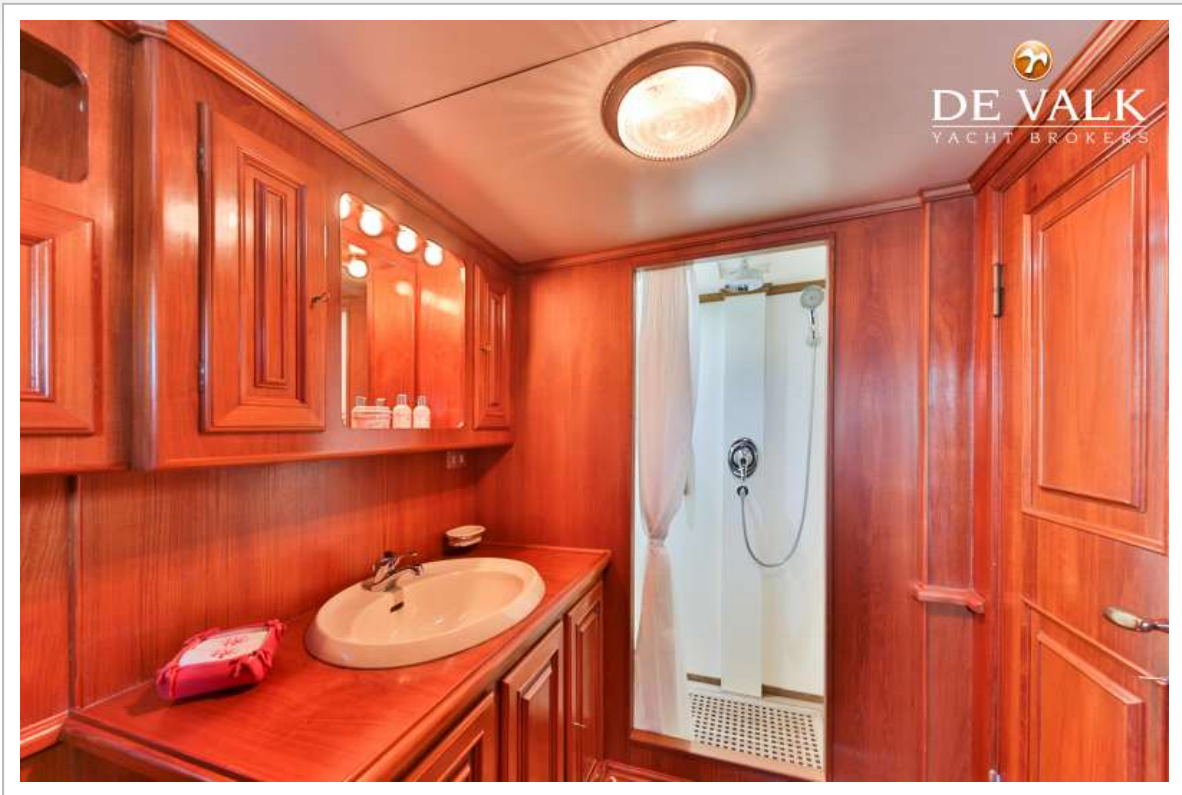
DE VRIES LENTSCH 28M



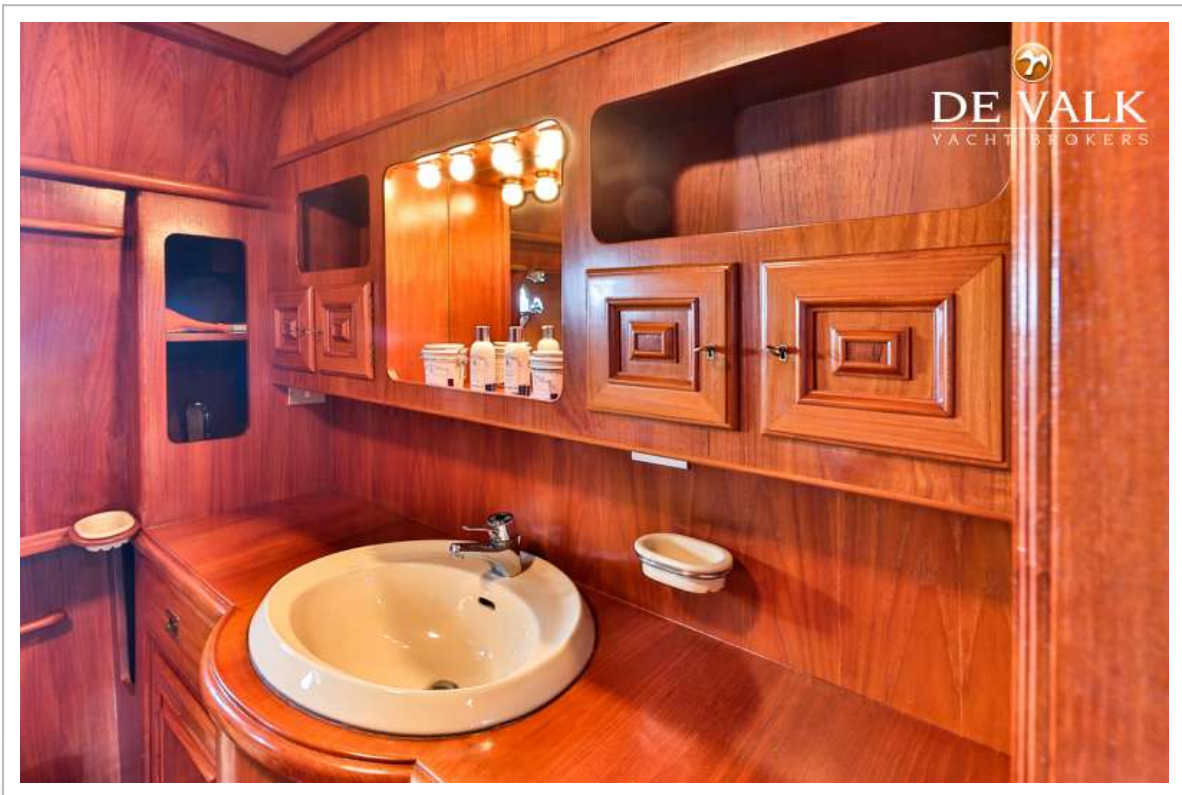
DE VRIES LENTSCH 28M



DE VRIES LENTSCH 28M



DE VRIES LENTSCH 28M



DE VRIES LENTSCH 28M



DE VRIES LENTSCH 28M

