



DE VALK
YACHT BROKERS



CANADOS OCEANIC 76 GT



DE VALK
YACHT BROKERS

BROKERAGE | CHARTER | BERTHS | FINANCE | INSURANCE | YACHT MANAGEMENT

CANADOS OCEANIC 76 GT

BROKER'S COMMENTS

This elegant Oceanic 76 GT was built in 2016 by the shipyard Canados. She can accommodate up to 6 guests in 3 cabins. Her three decks offer spacious living areas filled with natural light. Key features include her wide flybridge equipped a dining room for eight, a lounge for four and a large sunbed for six. She has the look of an explorer but her a modern design truly focuses on comfort. A beauty at sea who is ready for her new owner !

Alan Deasti

SPECIFICATIONS

Dimensions	23.70 x 5.80 x 1.90 (m)	Builder	Canados
Built	2016	Cabins	3
Material	GRP	Berths	6
Engine(s)	2 x CAT C18 ACERT diesel	Hp/Kw	2 x 1,150.00 (hp), 845.00 (kw)
Asking price	€ 2.150.000 (VAT Paid)	Lying	France

CONTACT

Sales office	De Valk Antibes	Telephone	+33 492 91 0202
Address	2, Avenue de Verdun 06600 Antibes FR	E-mail	antibes@devalk.nl

DISCLAIMER

These particulars are given in good faith as supplied but cannot be guaranteed.



CANADOS OCEANIC 76 GT

GENERAL

Model	CANADOS OCEANIC 76 GT
Type	motor yacht
LOA (m)	23,70
Beam (m)	5,80
Draft (m)	1,90
Year built	2016
Builder	Canados
CE norm	A
Hull material	GRP
Hull colour	white
Deck material	teak
Flybridge	yes
Fuel tank (litre)	4800
Freshwater tank (litre)	1200
Blackwater tank (litre)	265
Greywater tank (litre)	500

ACCOMMODATION

Cabins	3
Berths	6
Crew cabin	3
Pilot house	yes
Saloon	Two large sofas and a dining table
Air-conditioning	reverse cycle airco 120.000 BTU/h
Galley	Modern and black
Countertop	White
Sink	yes
Cooker	ceramic
Oven	yes
Gas alarm	yes



CANADOS OCEANIC 76 GT

Fridge	yes
Freezer	yes
Kettle	yes
Ice maker	yes
Owners cabin	double bed Full beam with a large L-shaped sofa and a desk
Bed length (m)	200x160cm
Wardrobe	walk-in closet
Bathroom	en suite
Toilet	en suite
Wash basin	in the bathroom X2
Shower	en suite Large stall
Guest cabin 1	double bed With a large sofa and LEDs under the bed
Bed length (m)	180x140cm
Wardrobe	hanging/drawers/shelves
Bathroom	en suite
Toilet	en suite
Wash basin	in the bathroom
Shower	en suite Large stall
Guest cabin 2	twin single
Wardrobe	hanging/drawers/shelves
Bathroom	en suite
Toilet	en suite
Wash basin	in the bathroom
Shower	en suite Stall
Crew cabin(s)	1 for 2 crew with bunk beds
Bathroom (crew)	yes
Toilet (crew)	yes
Shower (crew)	yes
Washing machine/dryer combi	yes
Flybridge	yes



MACHINERY

No of engines	2
Make	CAT C18 ACERT
HP	1150
kW	845
Fuel	diesel
Maximum speed (kn)	21
Cruising speed (kn)	18
Consumption (l/hr)	280
Range (nm)	350
Engine hours	701
Engine cooling system	seawater
Gearbox	hydraulic 2 ZF PW 665 V2-75 :1
Bowthruster	hydraulic
Sternthruster	hydraulic
Electric bilge pump	yes
Bilge alarm	yes
Generator	Kohler 20kW
Running hours generator	2300
Generator 2	Kohler 20kW
Running hours generator 2	2300
Batteries	yes
Watermaker	Idromar MC2J
Stabilizers	0-speed Seakeeper 16 220V

NAVIGATION

Compass	yes
Compass on flybridge	yes
Depth sounder	Furuno DFF1
Depth sounder/log	yes
Repeater	yes



VHF	Furuno FM-4721
Autopilot	Furuno NAV pilot - 711C
GPS	Furuno GP-330B
Radar/GPS/plotter	Furuno Navnet TZ touch 2
Navigation lights	yes

EQUIPMENT

Bimini	yes
Cockpit cushions	yes
Cockpit table	yes
Cockpit chairs	yes
Bathing platform	Hydraulic
Gangway	24V 1300mm
Deck shower	yes
Anchor	yes
Anchor chain	yes
Windlass	Italwinch Starplus, 2700W, 24V
Capstan	yes
Dinghy	Tender garage 3,85m
Horn	yes
Fenders	yes
TV	yes
Radio-cd player	yes
DVD player	yes
iPod connection	yes
Surround Sound System	System Linn
Cockpit speakers	yes
Speakers in salon	yes
Speakers in cabin	yes
Fire extinguisher	FE227
Auto extinguisher system	Marine fire



Extra info

Jet ski on the platform



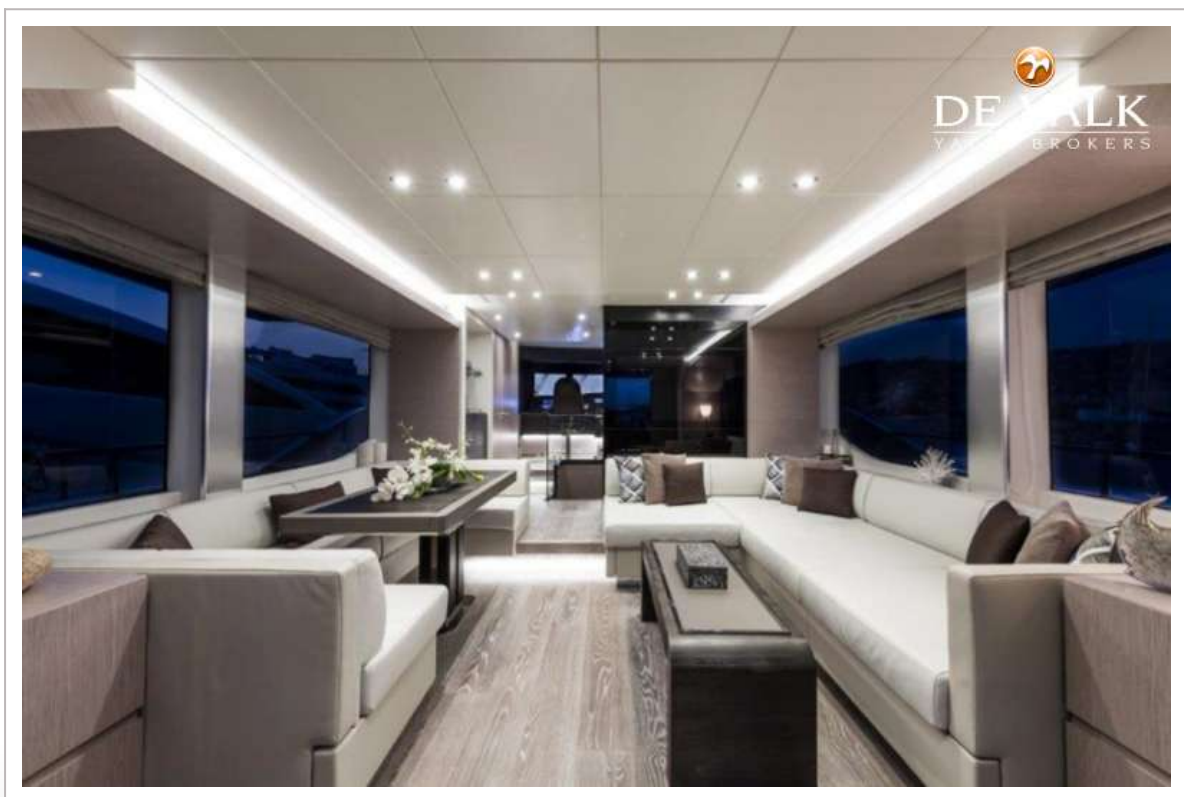
CANADOS OCEANIC 76 GT



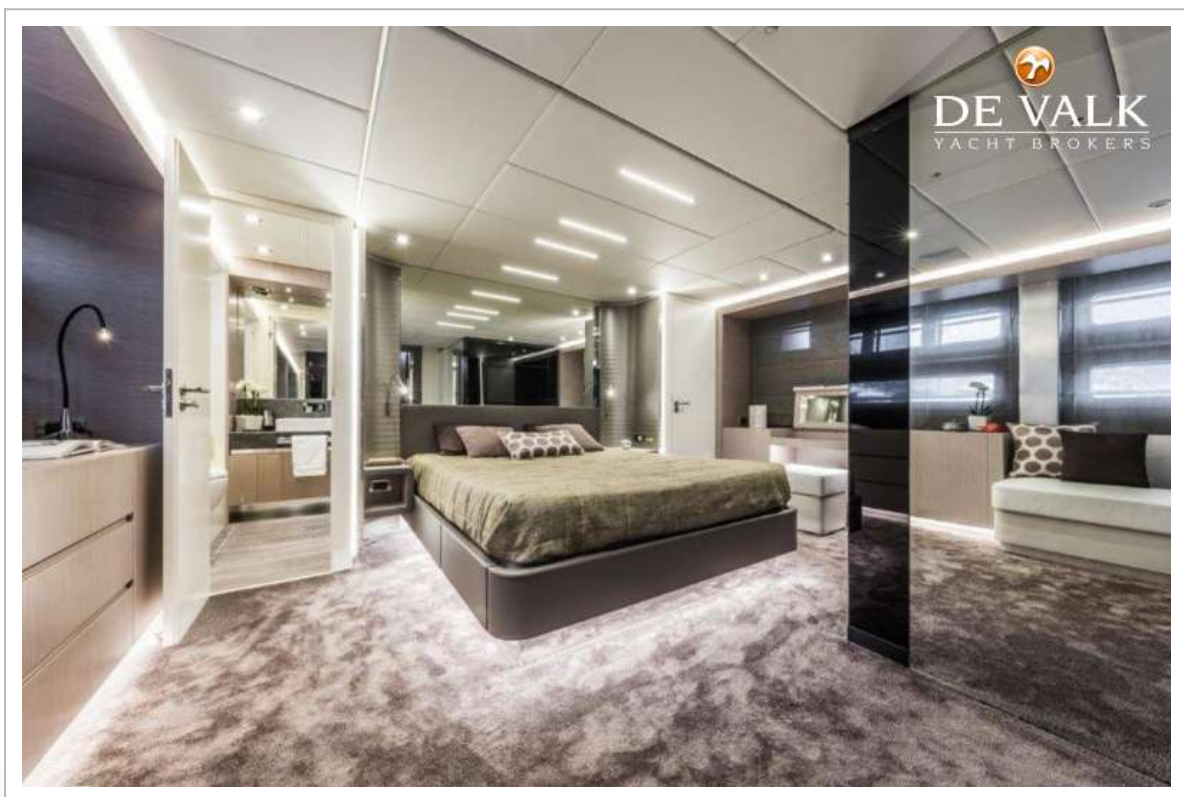
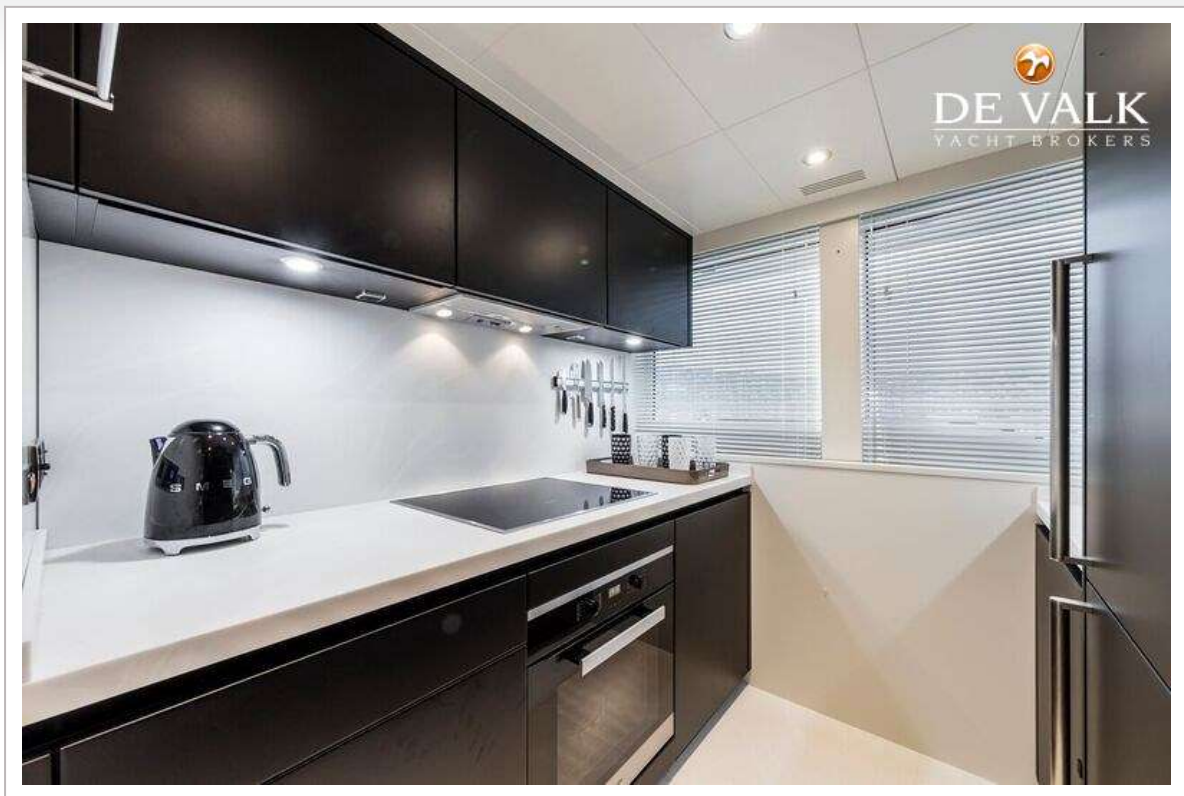
CANADOS OCEANIC 76 GT



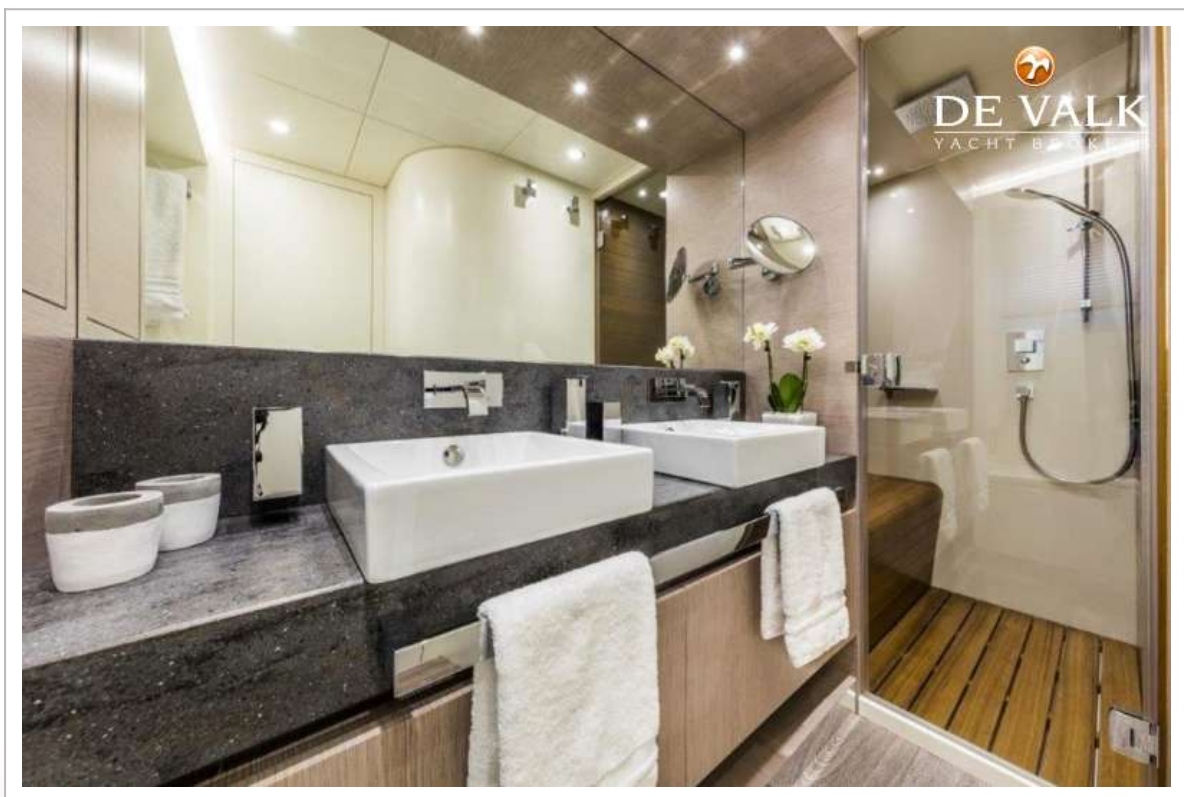
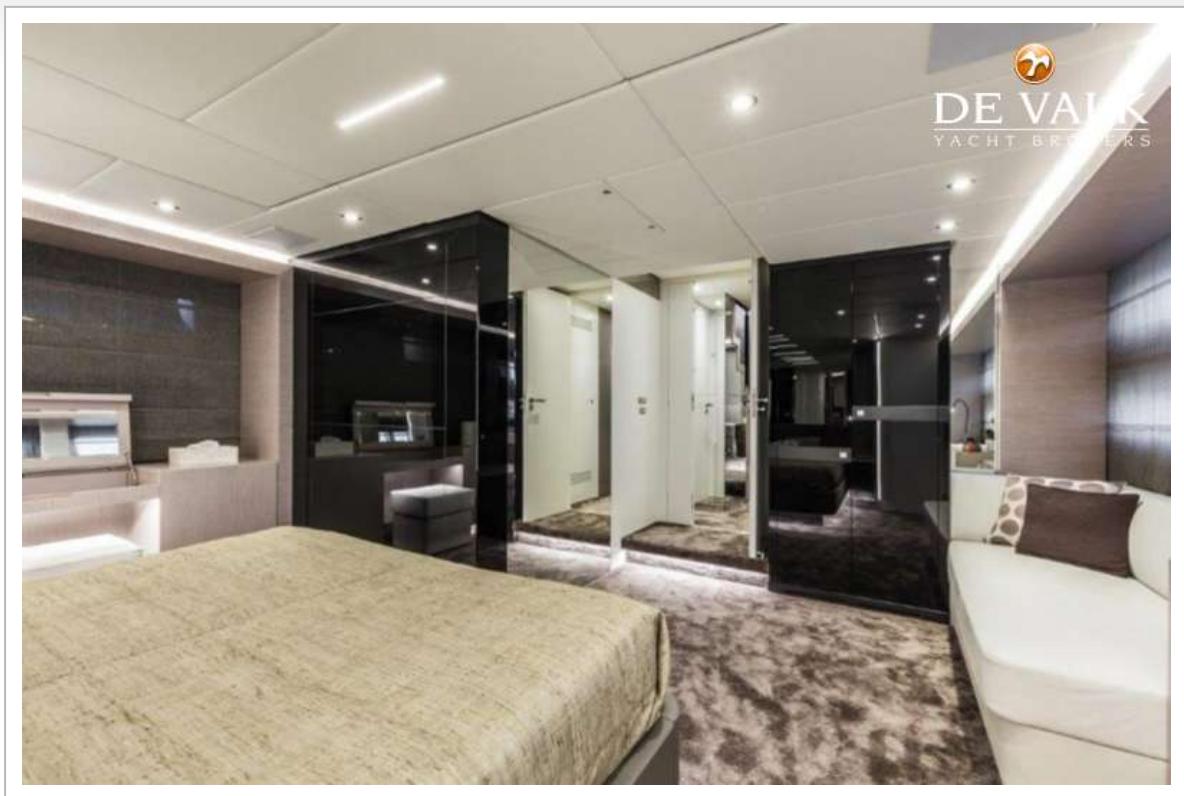
CANADOS OCEANIC 76 GT



CANADOS OCEANIC 76 GT

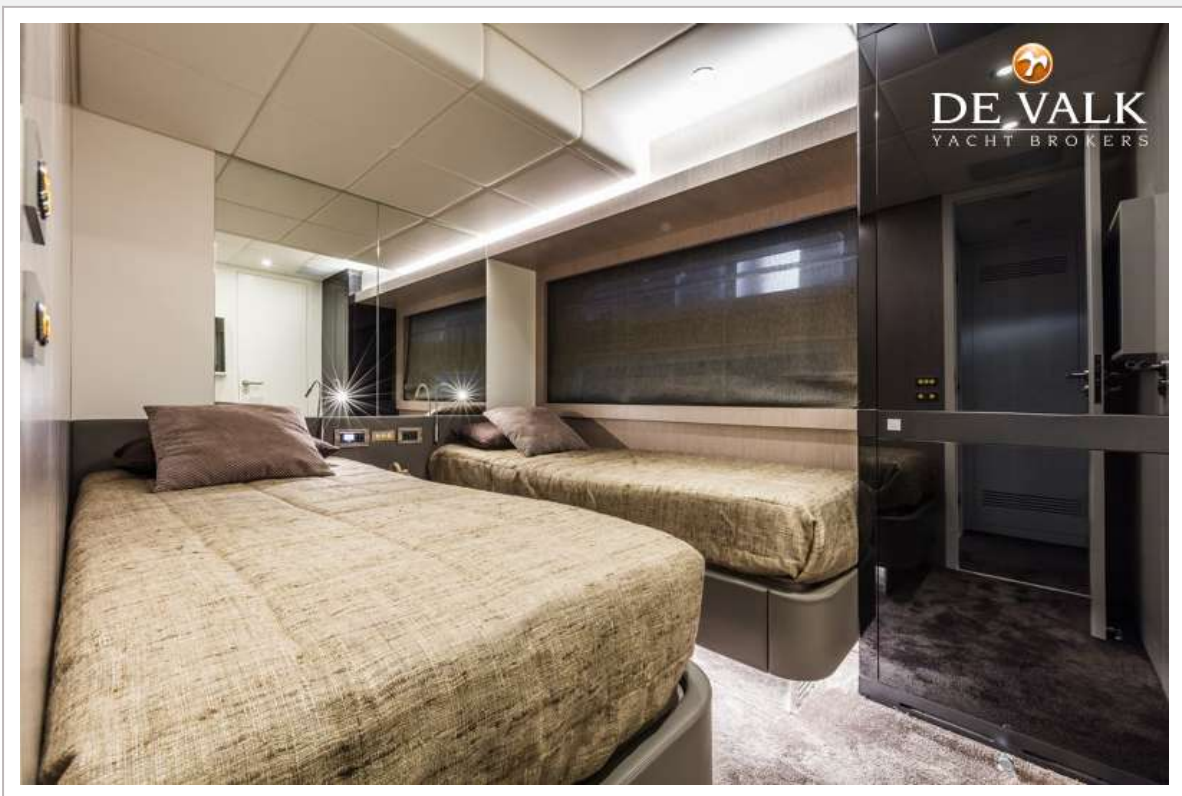


CANADOS OCEANIC 76 GT

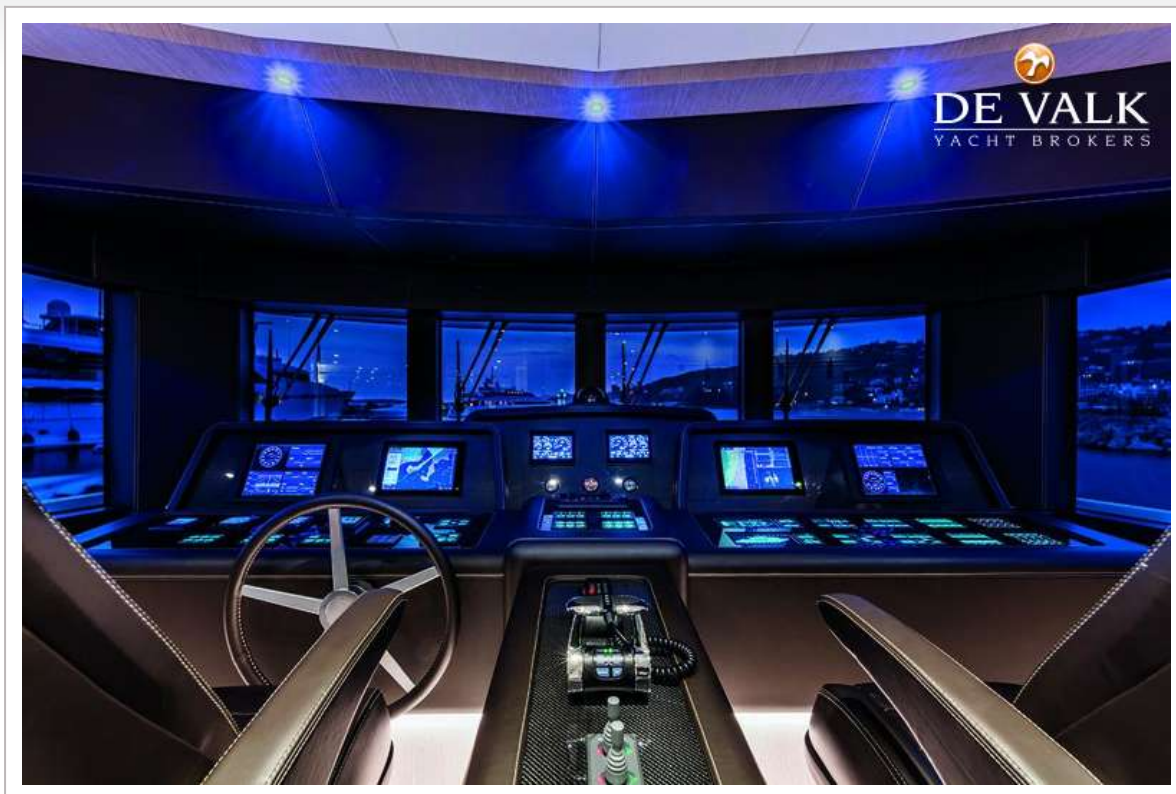




CANADOS OCEANIC 76 GT



CANADOS OCEANIC 76 GT



CANADOS OCEANIC 76 GT

