



## WEVER 53 KETCH LIFTING KEEL



# WEVER 53 KETCH LIFTING KEEL

## BROKER'S COMMENTS

This Alustar build Wever 53 from 2001 is a very stable, comfortable cruiser, designed by Piet Behage. Her owner has kept 'Avanta' in a really good condition, with many upgrades during the years. 'Avanta' is complete with a lifting keel, bowthruster, heating, air-conditioning in the owner's cabin, generator, solar panels, watermaker and much more. She is quite spacious inside with a pilot house, two cabins and a lot of storage space. Ready for long trips or even living on board. Please make an appointment to see this wonderful Wever 53 in our sales marina in Katwoude !

*Reinier van der Wolf*

## SPECIFICATIONS

<b>Dimensions</b>	16.90 x 4.70 x 1,40 / 2.90 (m)	<b>Builder</b>	K&M Yachtbuilders BV, Makkum
<b>Built</b>	2001	<b>Cabins</b>	2
<b>Material</b>	Aluminium	<b>Berths</b>	4
<b>Engine(s)</b>	1 x Perkins Sabre M135 diesel	<b>Hp/Kw</b>	134.69 (hp), 99.00 (kw)
<b>Asking price</b>	sold (VAT )	<b>Lying</b>	at sales office

## CONTACT

<b>Sales office</b>	De Valk Monnickendam B.V.	<b>Telephone</b>	+31 (0)299 65 63 50
<b>Address</b>	Hoogedijk 6 1145 PM Katwoude NL	<b>E-mail</b>	monnickendam@devalk.nl

## DISCLAIMER

These particulars are given in good faith as supplied but cannot be guaranteed.



# WEVER 53 KETCH LIFTING KEEL

## GENERAL

Model	WEVER 53 KETCH LIFTING KEEL
Type	sailing yacht
LOA (m)	16,90
LWL (m)	13,00
Beam (m)	4,70
Draft (m)	2,90
Draft min (m)	1,40
Air draft (m)	22,00
Air draft min (m)	21,00
Headroom (m)	2,00
Year built	2001
Launched	June 2001
Builder	K&M Yachtbuilders BV, Makkum
Country	The Netherlands
Designer	P.B. Behage
Displacement (t)	27
Ballast (tonnes)	lead 8,8
CE norm	A
Hull material	aluminium
Hull colour	off-white
Hull thickness (mm)	15 > 5 (2001)
Hull shape	round-bilged
Keel type	lifting keel Renovated end 2016
Superstructure material	aluminium Alustar
Superstructure (mm)	8 (2001)
Deck plate thickness (mm)	5 (2001)
Rubbing strake	aluminum
Deck material	aluminium Alustar
Deck finish	non-skid paint KiwiGrip
Superstructure deck finish	non-skid paint Awlgrip + KiwiGrip



# WEVER 53 KETCH LIFTING KEEL

Cockpit deck finish	teak 20 mm
Antifouling (year)	International
Dorades	4x Vetus
Window frame	aluminium
Window material	double glazing 'Hora'
Deckhatch	7x 'Gebo'
Portholes	8x glass with aluminium framing
Insulation	Polyurethane 40 mm
Steadying sail with mast	Ketch
Fuel tank (litre)	aluminium 700
Fuel tank 2 (litre)	aluminium 700
Level indicator (fuel tank)	yes
Fuel daytank (litre)	aluminium 150 Alustar
Level indicator (daytank)	yes
Freshwater tank (litre)	aluminium 2x 400 Alustar
Level indicator (freshwater)	yes
Blackwater tank (litre)	polyethylene 2x 50
Level indicator (blackwater)	Warning light
Blackwater tank extraction	deck extraction + pump
Greywater tank (litre)	aluminium 2x 150
Level indicator (greywater)	yes
Wheel steering	rack & pinion Mamba 'Whitlock'
Inside helm position	on autopilot
Outside helm position	rack & pinion Mamba system
Emergency tiller	yes
More info on hull	Oyster White Awlgrip (2011) + 2014 + 2016 updated. Oyster White deck + construction. KiwiGrip Antislip. 5x stainless steel mushrooms ventilation.
Extra info	Lifting keel

## ACCOMMODATION

Cabins	2
--------	---



# WEVER 53 KETCH LIFTING KEEL

Berths	4
Interior	ash Mahogany +
Floor	teak and holly
Aft deck	yes
Pilot house	yes
Deck saloon	yes
Pilot house/deck saloon	yes
Doghouse	yes
Saloon	yes
Headroom saloon (m)	2,00 m
Sliding roof	manual Above cockpit
Heating	central heating Eberspächer, on engine, electric
Air-conditioning	single cycle airco Bedroom
Navigation center	yes
Chart table	yes
Aft Cabin	yes
Dining room	yes
Dinette to convert into berth	yes
Opening door to cockpit	yes
Galley	yes
Countertop	Corian
Sink	stainless steel 2x
Cooker	electric 'Force 10'
Oven	has to be checked
Extractor	Siemens
Microwave/oven combi	Samsung (2015)
Fridge	Frigomatic
Freezer	in engine room Frigomatic
Hot water system	220V + engine Boiler 80
Water pressure system	electrical 'Jabsco'
Manual and/or foot pump	Foot
Kettle	yes



# WEVER 53 KETCH LIFTING KEEL

Coffee maker	yes
Crockery	yes
Owners cabin	French bed
Bed length (m)	2
Wardrobe	hanging/drawers/shelves
Bathroom	en suite
Toilet	en suite
Toilet system	manual
Wash basin	in the bathroom
Shower	en suite
Bath tub	en suite
Guest cabin 1	bunk bed
Bed length (m)	2
Wardrobe	hanging and shelves
Bathroom	en suite
Toilet	en suite
Toilet system	manual
Wash basin	in the bathroom
Shower	en suite
Bath tub	en suite
Washing machine/dryer combi	AEG
Extra info	Breadmaker. Water treatment plant.
Extra info	sailing yacht with lifting keel

## MACHINERY

No of engines	1
Make	Perkins Sabre
Type	M135
HP	135
kW	99,00
Fuel	diesel



# WEVER 53 KETCH LIFTING KEEL

Year installed	2001
Maximum speed (kn)	8
Cruising speed (kn)	6
Engine hours	6276
Engine cooling system	freshwater heat exchanger
Drive	shaft
Shaft seal	Volvo Seal
Engine controls	bowden cable 2001
Gearbox	hydraulic 'Hurth'
Bowthruster	electric Max Power 180, overhauled in 2015
Exhaust	watercooled Met gas-waterafscheider
Thrust bearing	Python Drive
Propeller type	fixed 2008
Propeller blades	3
Propeller shaft material	Bronze
Shaft lubrication	grease
Manual bilge pump	3x
Electric bilge pump	5x
Bilge alarm	yes
Electrical installation	12V / 24V / 220V
Generator	silent separator Paguro 3000 (diesel) 2014. overhauled in 2017
Running hours generator	354
Generator 2	Honda 2kW (gasoline) 2010
Batteries	yes
Start battery	2x Optima D27M (2015)
Generator battery	1x (2015)
Bowthruster battery	4x Optima (2015)
Battery monitor	2x (Mastervolt + Victron)
Battery charger	(Victron Multiplus + Victron Scilla for navigation bank) 2x
Inverter	Victron
Wind generator	Superwind 350 W (2017)
Solar panel	2x 285 W (2014)



# WEVER 53 KETCH LIFTING KEEL

<b>Diode battery combiners</b>	1x, feeding start battery + bow thruster. 1x, feeding both main banks. 2x
<b>Shorepower</b>	with cable
<b>Insulation transformer</b>	Victron Energy
<b>Watermaker</b>	Schenker 30 l/hours (2016)
<b>Extra info</b>	24V / 750Ah home batteries (12x2 out of 2016). 24V / 275Ah Navigation Batterybank (12x2 from 2016). Lifespan is 15 to 20 years. 2x Dynamo (1x 40Ah 24V + 1x 110Ah 24V). Spare dynamo Mastervolt 75Ah.

## NAVIGATION

<b>Compass</b>	Polaris racing
<b>Windset</b>	yes
<b>VHF</b>	Raymarine Ray240EU (2012)
<b>VHF handheld</b>	2x (2013 + 2015)
<b>Wind vane steering install.</b>	yes
<b>Radar</b>	Raymarine RD424HD (2015)
<b>GPS</b>	Raymarine of 2008 + Raystar 240 of 2015.
<b>Plotter/GPS</b>	Raymarine Pathfinder 80C + 70C (2005). C95 Multifunction display with WiFi is from 2015. It can be operated remotely using a tablet.
<b>Electronic chart(s)</b>	yes
<b>AIS receiver</b>	ICOM MA500TR (2013)
<b>AIS transponder</b>	ICOM MA500TR (2013)
<b>Transmitter</b>	2007, revised in 2015 + Pactor modem ICOM 8001E
<b>EPIRB</b>	406 MHz, category II
<b>Navigation lights</b>	Present for both motoring and sailing. Special stainless steel brackets for the rail-mounted green and red lights to protect against overcoming waves have been installed.
<b>Extra info</b>	6x ST60+ instruments in pilot house (wind, depth, speed, autopilot, rudder and compass). 4x ST60+ instruments in cockpit.
<b>Extra info</b>	Active R&R pacific antenna system. Inmarsat-C (Sailor) satellite. Satphone Pro. Interphase SE-200 (2007) forward looking sonar.





# WEVER 53 KETCH LIFTING KEEL

## EQUIPMENT

Sprayhood	yes
Cockpit cover	yes
Bimini	yes
Sun awning	yes
Window cover	yes
Cockpit cushions	yes
Cockpit table	yes
Bathing platform	yes
Boarding ladder	stainless steel
Transom door	yes
Gangway	yes
Deck shower	hot water
Anchor	CQR Plough
Anchor chain	90 m
Anchor 2	Delta
Anchor chain	10 m + line
Chain counter	yes
Windlass	electrical Muir Atlantic 2500 (2011)
Capstan	yes
Outboard	4-stroke, revised at the end of 2016 Yamaha 5HP (2013)
Outboard support	yes
Davits	stainless steel
Davits controls	manual
Sea railing	stainless steel Tube
Grab rail (superstructure)	aluminium
Railing side opening gates	2x
Pulpit	yes
Lifejackets	4x (new)
Safety harness	yes
Lifebuoy	yes



# WEVER 53 KETCH LIFTING KEEL

Danbuoy	yes
Safety lines on deck	yes
Rope cutter	yes
Wiper	2x
Horn	electric
Binocular	yes
Radar reflector	yes
Fenders	yes
Mooring lines	yes
Spare parts	yes
Tools	yes
Alarm system	yes
TV	yes
Radio-cd player	yes
DVD player	yes
Speakers in salon	+ Speakers in wheelhouse
Speakers in cabin	yes
Clock - barometer	yes
Fire extinguisher	2x
Extinguisher in engine room	yes
Auto extinguisher system	In engine room

## RIGGING

Rigging	ketch-cutter
Standing rigging	Dyform 2016 complete inspection with report
Brand mast	Sparcraft 2001
Material mast	aluminium
Spreaders	3x
Mainsail cover	2011
Battcars	yes
Fully battened mainsail	2011



# WEVER 53 KETCH LIFTING KEEL

Cutterstay	yes
Mizzen	2011
Mizzen sailcover	yes
High aspect	100% (2011) + UV strip
Cutter furler	Profurl (2003)
Code Zero	2012
Gennaker	hardly used 2006
Staysail furler	yes
Reefing System	slabreefing
Backstay adjuster	mechanical 2x
Boomvang	mechanical and tackle
Primary sheet winch	one of the 58ST has been prepared for an electric motor. 3x 64ST + 2x 58ST
Secondary sheet winch	2x 46ST + 1x 40ST
Winchcovers	yes
Isolated backstay	For SSB radio
Extra info	Holders present (stag sail and jib)
Extra info	yacht with lifting keel



# WEVER 53 KETCH LIFTING KEEL



BROKERAGE | CHARTER | BERTHS | FINANCE | INSURANCE | YACHT MANAGEMENT



DE VALK  
YACHT BROKERS



**This yacht will be auctioned,  
for further details please visit [www.devalk.nl](http://www.devalk.nl)**

**Dit schip zal worden geveild,  
voor meer informatie gaat u naar [www.devalk.nl](http://www.devalk.nl)**

**Dieses Schiff wird versteigert,  
für weitere informationen besuchen Sie [www.devalk.nl](http://www.devalk.nl)**

[WWW.DEVALK.NL](http://WWW.DEVALK.NL)



DE VALK  
YACHT BROKERS



# WEVER 53 KETCH LIFTING KEEL





# WEVER 53 KETCH LIFTING KEEL

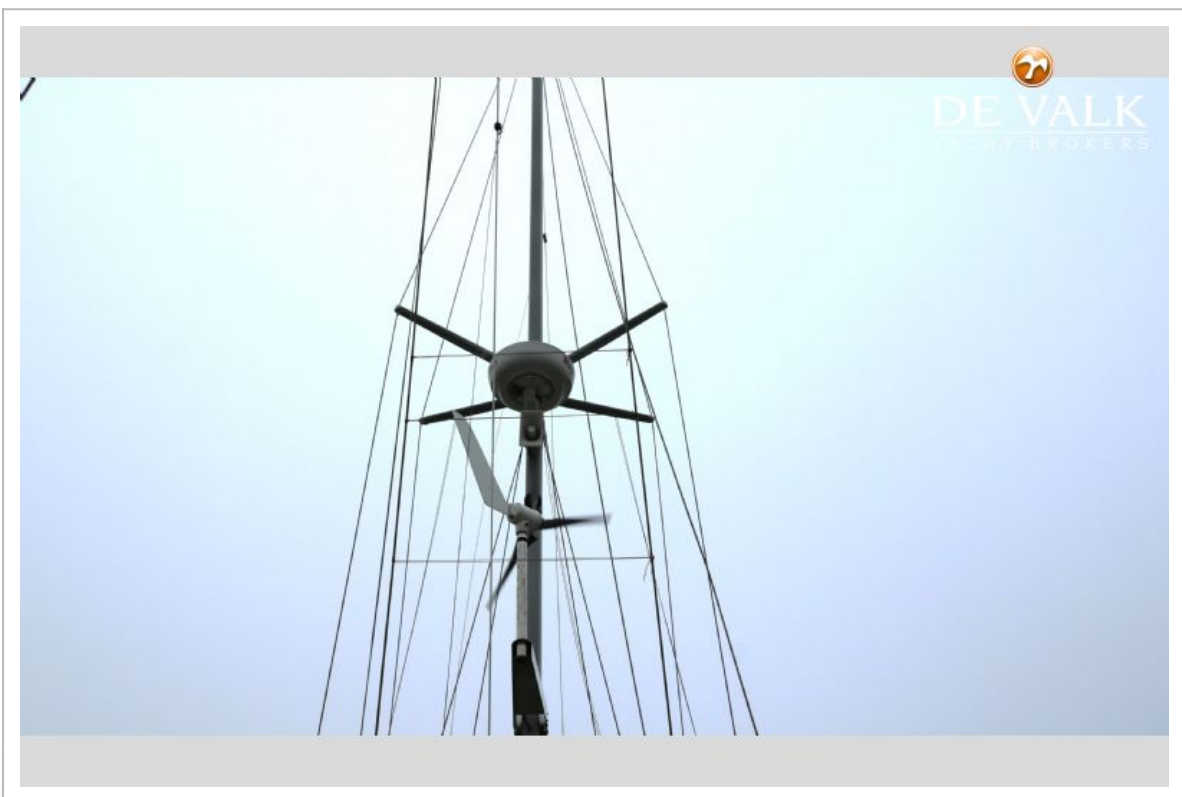


## WEVER 53 KETCH LIFTING KEEL





# WEVER 53 KETCH LIFTING KEEL





## WEVER 53 KETCH LIFTING KEEL



## WEVER 53 KETCH LIFTING KEEL

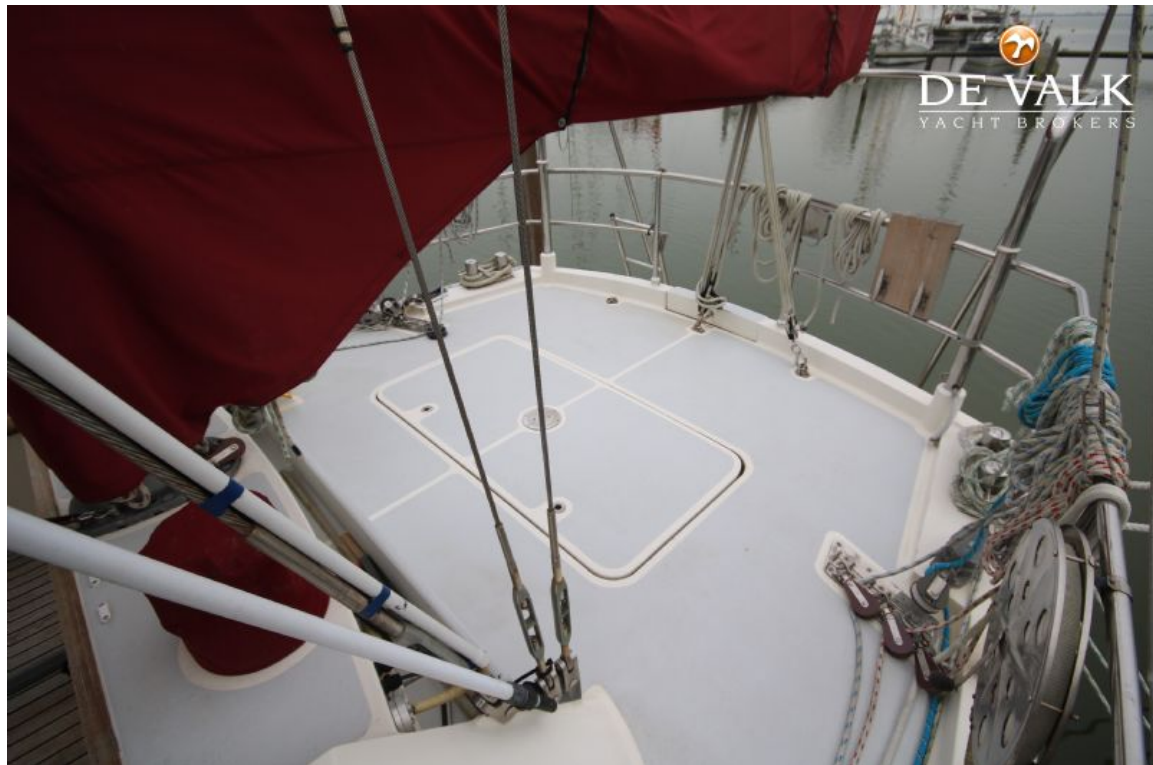




# WEVER 53 KETCH LIFTING KEEL

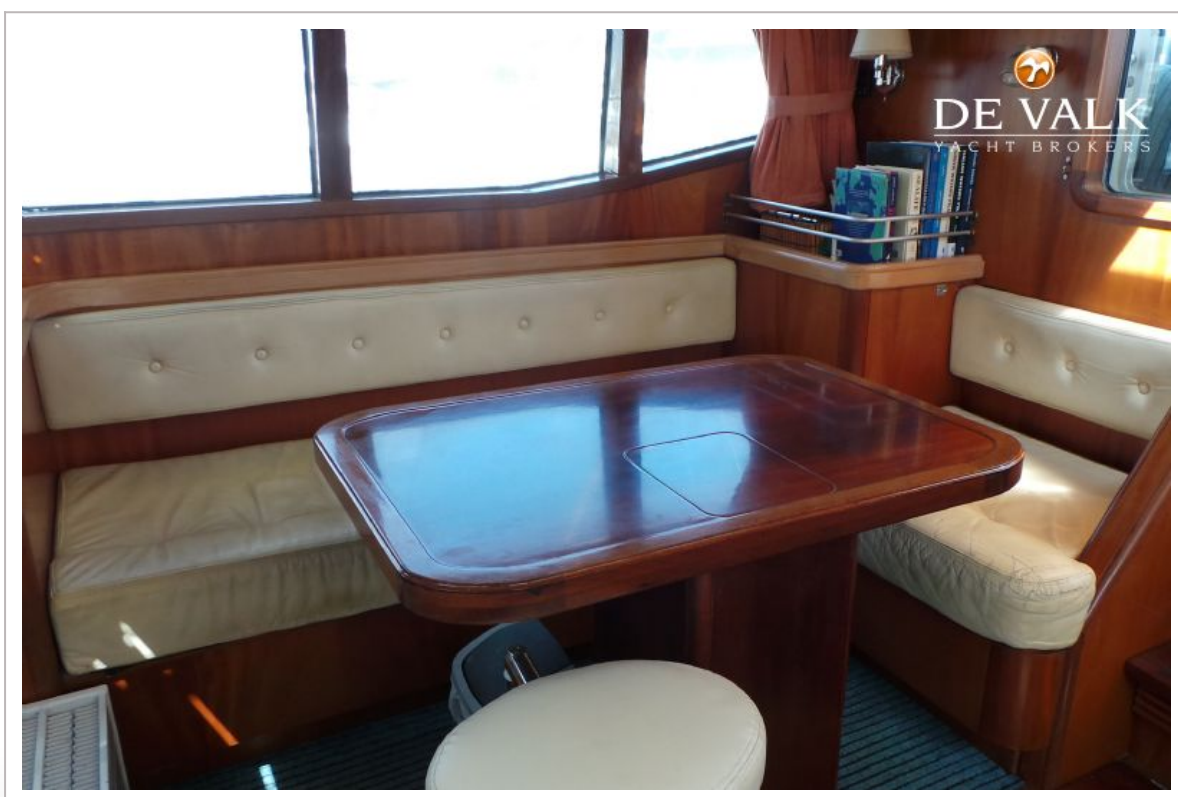
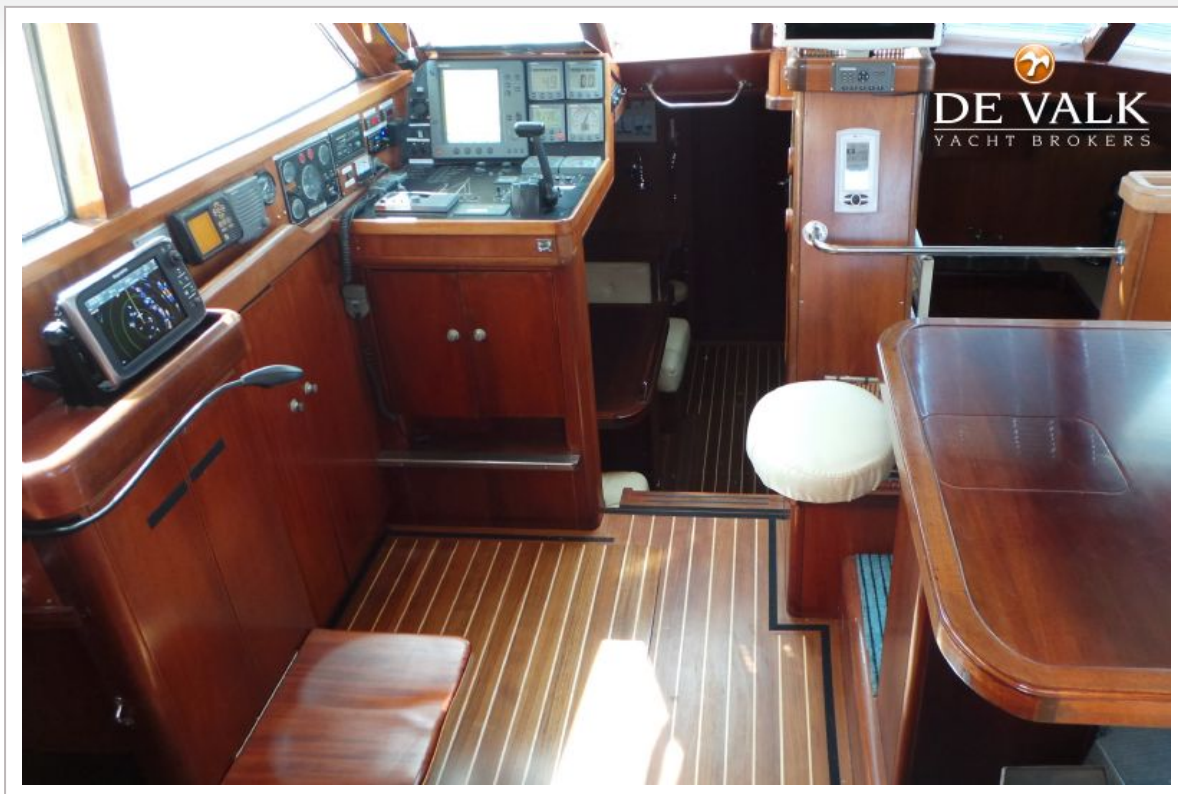


# WEVER 53 KETCH LIFTING KEEL

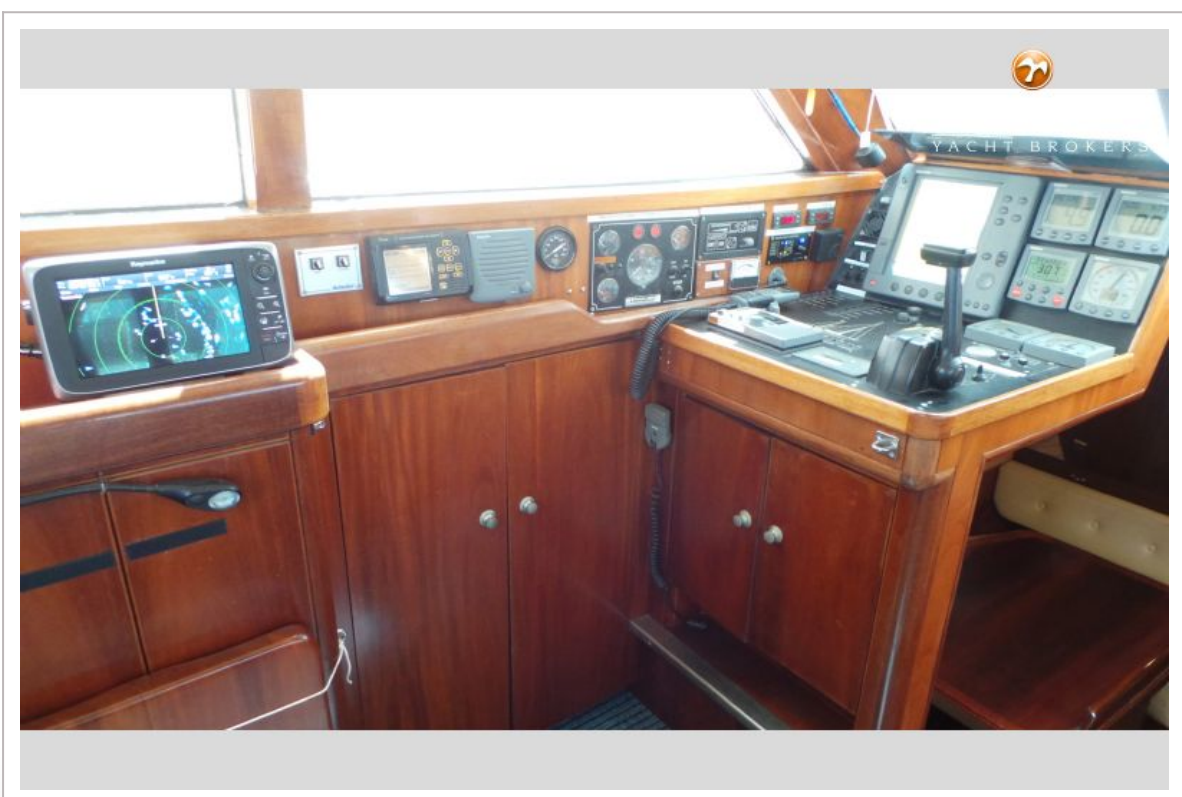




## WEVER 53 KETCH LIFTING KEEL

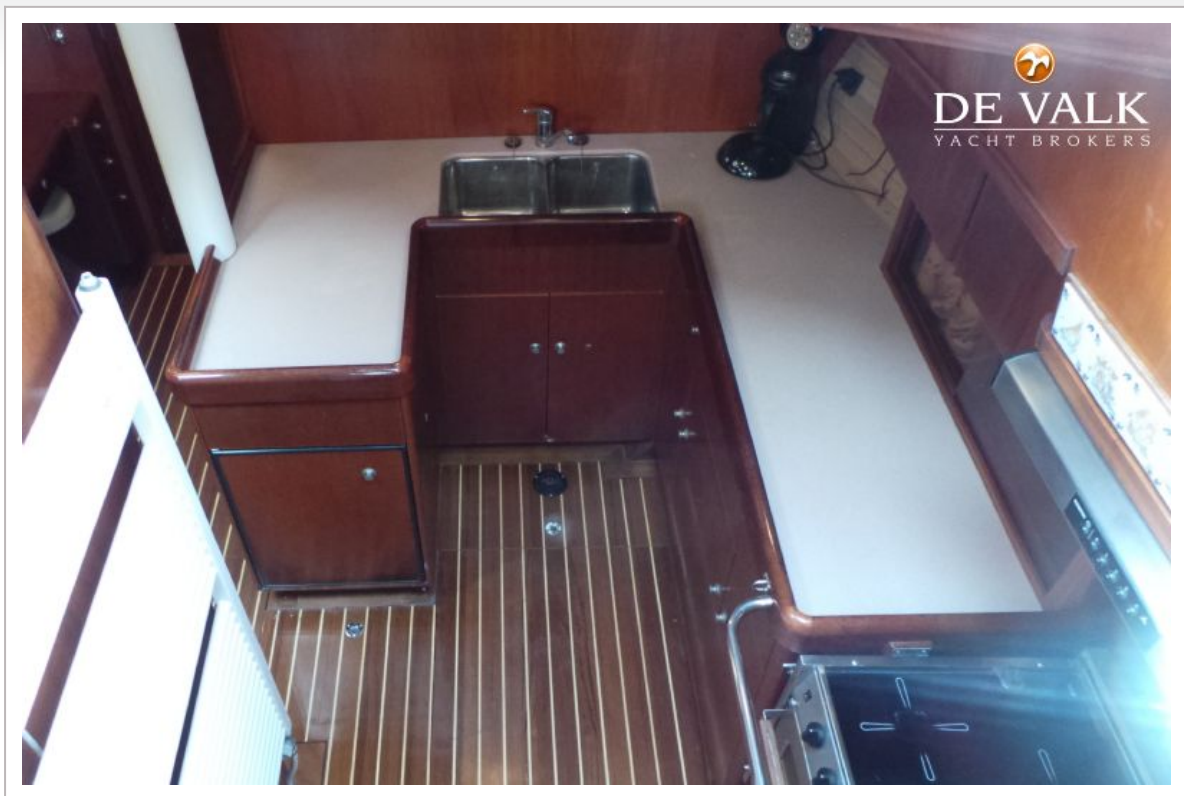


# WEVER 53 KETCH LIFTING KEEL





## WEVER 53 KETCH LIFTING KEEL



## WEVER 53 KETCH LIFTING KEEL

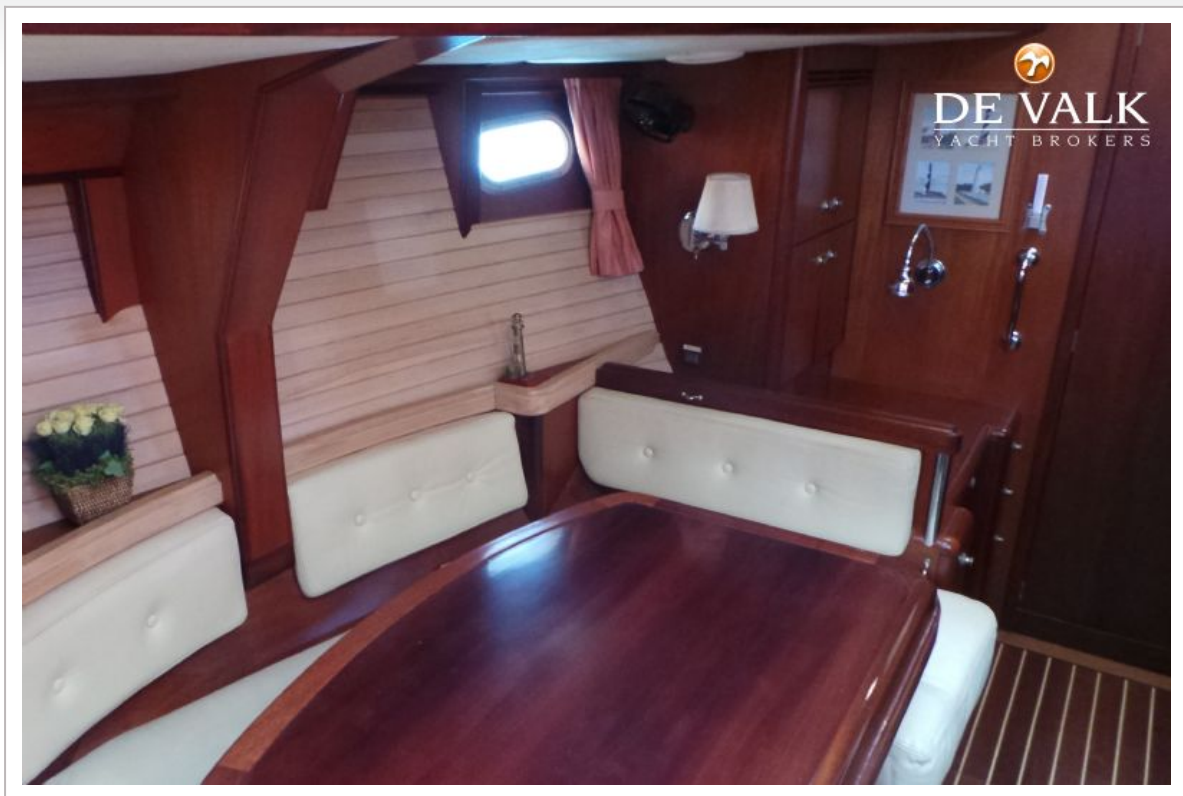




## WEVER 53 KETCH LIFTING KEEL



## WEVER 53 KETCH LIFTING KEEL

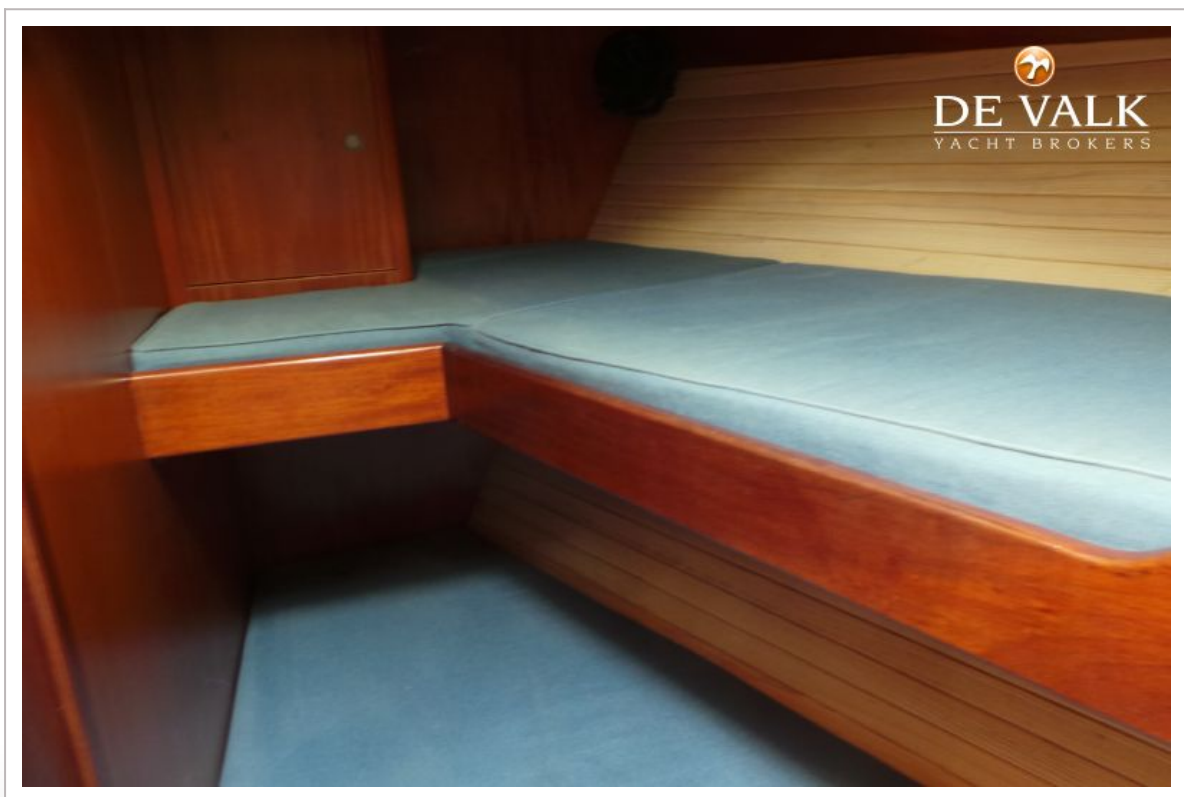




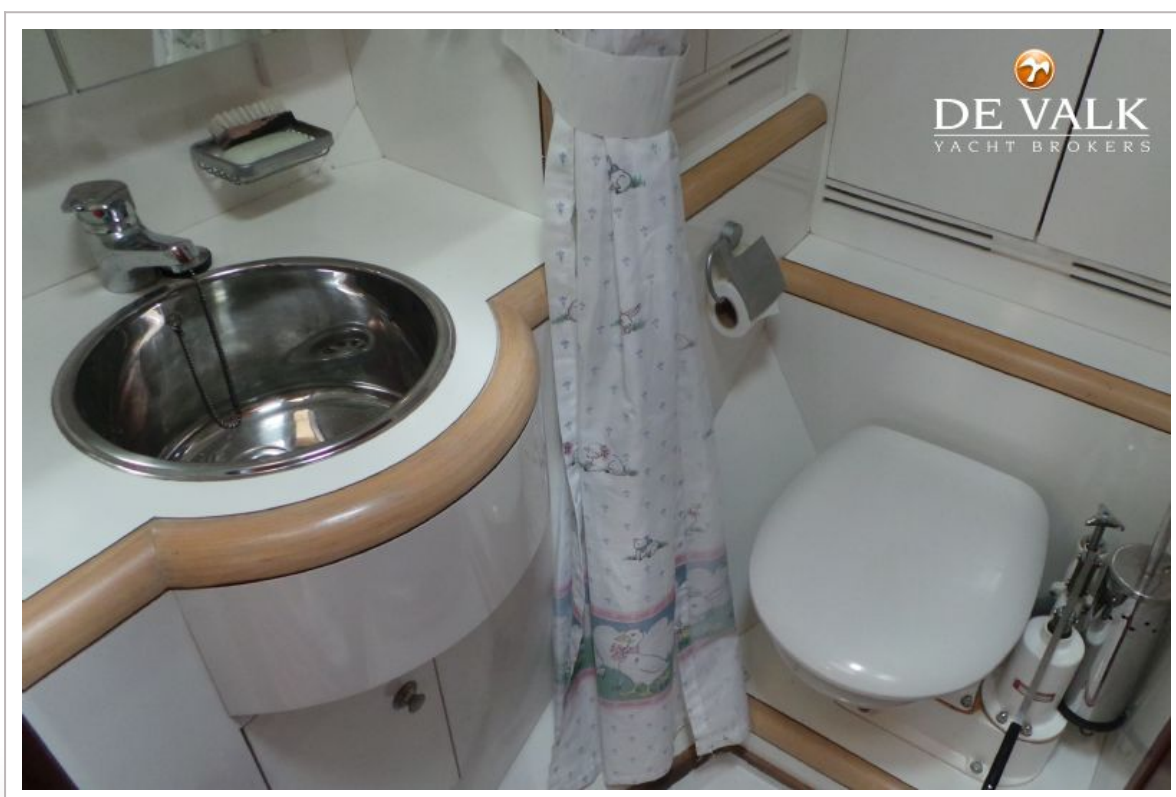
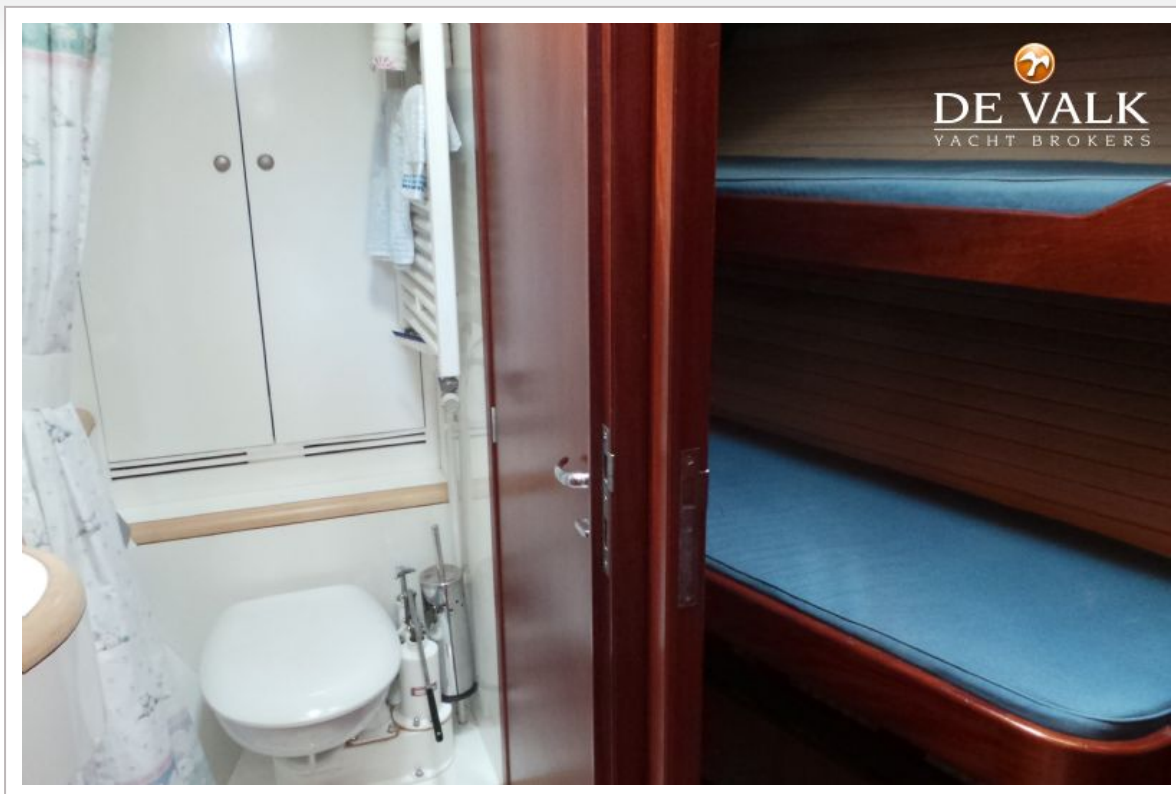
## WEVER 53 KETCH LIFTING KEEL



## WEVER 53 KETCH LIFTING KEEL



## WEVER 53 KETCH LIFTING KEEL



# WEVER 53 KETCH LIFTING KEEL

