



TA CHIAO CT-41

BROKER'S COMMENTS

A beautifully presented example of this eminently capable modern classic. Built of heavy fiberglass and fine lines she is sturdy and eye-catching at the same time. Current owner did not save money to have her upgraded to be the best that she can be. With New chainplates main mast, All new electrics (12-220v), 2015 aluminium masts + rigging, new electronics, bow thruster and so on. 'Amazone' lies in our sales marina of Katwoude, the Netherlands waiting for her new owners to set sail to distant foreign destinations.

Reinier van der Wolf

SPECIFICATIONS

Dimensions	14.00 x 3.69 x 1.83 (m)	Builder	Ta Chiao Shipbuilding Co.
Built	1974	Cabins	2
Material	GRP	Berths	6
Engine(s)	1 x Volvo Penta MD21A diesel	Hp/Kw	75.00 (hp), 55.13 (kw)
Asking price	sold (VAT)	Lying	at sales office

CONTACT

Sales office	De Valk Monnickendam B.V.	Telephone	+31 (0)299 65 63 50
Address	Hoogedijk 6 1145 PM Katwoude NL	E-mail	monnickendam@devalk.nl

DISCLAIMER

These particulars are given in good faith as supplied but cannot be guaranteed.



GENERAL

Model	TA CHIAO CT-41
Type	sailing yacht
LOA (m)	14,00
LWL (m)	9,91
Beam (m)	3,69
Draft (m)	1,83
Air draft (m)	17,00
Year built	1974
Builder	Ta Chiao Shipbuilding Co.
Country	Taiwan
Designer	William Garden
Displacement (t)	12,5
Ballast (tonnes)	4
Hull material	GRP
Hull colour	white
Hull shape	S-bilged
Keel type	long keel
Superstructure material	GRP
Rubbing strake	wood
Deck material	GRP
Deck finish	non-skid paint
Superstructure deck finish	paint
Cockpit deck finish	non-skid paint
Dorades	2
Window frame	aluminium
Window material	perspex (2015)
Deckhatch	with new covers (2016)
Portholes	copper
Fuel tank (litre)	steel 250
Fuel tank 2 (litre)	steel +/-180



Level indicator (fuel tank)	yes
Freshwater tank (litre)	aluminium 400
Level indicator (freshwater)	yes
Wheel steering	cable steering (2015)
Emergency tiller	yes
More info on hull	Anti osmose epoxy treatment on hull (+/_ 2005)
More info on paintwork	one compound paint
Extra info	most seacocks renewed in 2015, plastic

ACCOMMODATION

Cabins	2
Berths	6
Interior	teak
Floor	teak
Open cockpit	yes
Saloon	yes
Headroom saloon (m)	+/- 2.00
Heating	central heating Eberspacher (2016)
Heating 2	stove diesel Newport by Dickenson
Chart table	yes
Dinette to convert into berth	yes
Galley	yes
Countertop	tiles
Sink	stainless steel
Cooker	calor gas
Oven	yes
Extractor	yes
Gas alarm	yes
Microwave	yes
Fridge	only on 220v
Hot water system	220V



Water pressure system	electrical
Manual and/or foot pump	yes
Kettle	yes
Coffee maker	yes
Crockery	yes
Owners cabin	twin single
Bed length (m)	+/- 2.00
Wardrobe	hanging/drawers/shelves
Bathroom	shared
Toilet	shared
Shower	shared
Guest cabin 1	yes
Bed length (m)	+/- 2.00
Wardrobe	drawers and shelves
Extra info	new gas installation in 2016 (needs to be re-certified)
Extra info	Headroom: Entrance/charttable: 2.00 m. Galley: 1.86 m. Saloon: 1.98 m. Fore cabin: 1.93 m. Toilet/shower area: 1.92 m.

MACHINERY

No of engines	1
Make	Volvo Penta
Type	MD21A
HP	75
kW	55,13
Fuel	diesel
Year installed	1974
Year of overhaul	(+/- 2005)
Maximum speed (kn)	6
Cruising speed (kn)	5
Engine cooling system	freshwater heat exchanger
Drive	shaft



Engine controls	bowden cable
Bowthruster	electric Max-Power 85 (2015)
Exhaust	watercooled
Propeller type	folding Max-Prop
Propeller blades	3
Propeller shaft material	stainless steel
Shaft lubrication	grease
Manual bilge pump	yes
Electric bilge pump	2x
Electrical installation	12 and 220v renewed (2015)
Start battery	80 Ah (2016)
Service battery	2x 180 Ah (2018)
Bowthruster battery	100 Ah (2020)
Battery charger	Victron multiplus 3000 power
Diode battery combiners	Victron
Shorepower	with cable
Extra info	New engine control panel

NAVIGATION

Electric compass	B&G
Depth sounder/log	B&G
Log	B&G
Windset	yes
VHF	with AIS B&G V50
Autopilot	Raymarine autohelm ST4000
GPS	B&G GPS
Plotter	B&G Zeus 2
Electronic chart(s)	Navionics
AIS receiver	B&G
EPIRB	serviced 2015
Navigation lights	LED (2015)



EQUIPMENT

Winter cover	(2016)
Cockpit cushions	(2016)
Boarding ladder	stainless steel
Anchor	CQR Plough
Anchor 2	Danforth
Anchor chain	60 m. (2015)
Windlass	manual Seatiger 555
Dinghy	inflatable (2016)
Outboard	2,5 hp (2016) Suzuki
Outboard support	yes
Davits	Vetus
Davits controls	manual
Sea railing	wire
Grab rail (superstructure)	teak
Railing side opening gates	yes
Life raft	container
Life raft (pers)	6 (needs service)
Lifejackets	yes
Safety harness	yes
Lifebuoy	yes
Danbuoy	yes
Safety lines on deck	yes
Rope cutter	yes
Horn	air pressure
Radar reflector	yes
Fenders	yes
Mooring lines	(2016)
Spare parts	yes
Tools	yes
Radio	yes



iPod connection	yes
Speakers in salon	yes
Speakers in cabin	yes
Clock - barometer	yes
Fire extinguisher	4x (2016)

RIGGING

Rigging	ketch
Standing rigging	wire (2015)
Brand mast	Seldén
Material mast	aluminium
Spreaders	yes
Keel stepped mast	yes
Mainsail	used, but in good condition
Mainsail cover	(2016) + lazy jack/lazybag
Mizzen	yes
Mizzen sailcover	(2016)
Jib II	yes
High aspect	used, but in good condition
Genoa furler	Pro furl (2015)
Genoa cover	(2016)
Stormjib	yes
Reefing System	slabreefing
Backstay adjuster	mechanical
Primary sheet winch	Lewmar
Genoa sheetwinches	Lewmar
Halyard winches	Lewmar
Reefing winch	Lewmar
Extra info	New main mast chainplates (2015) Wooden masts replaced for aluminium masts in 2015
Extra info	All new running rigging and new blocks and tackles (2015)

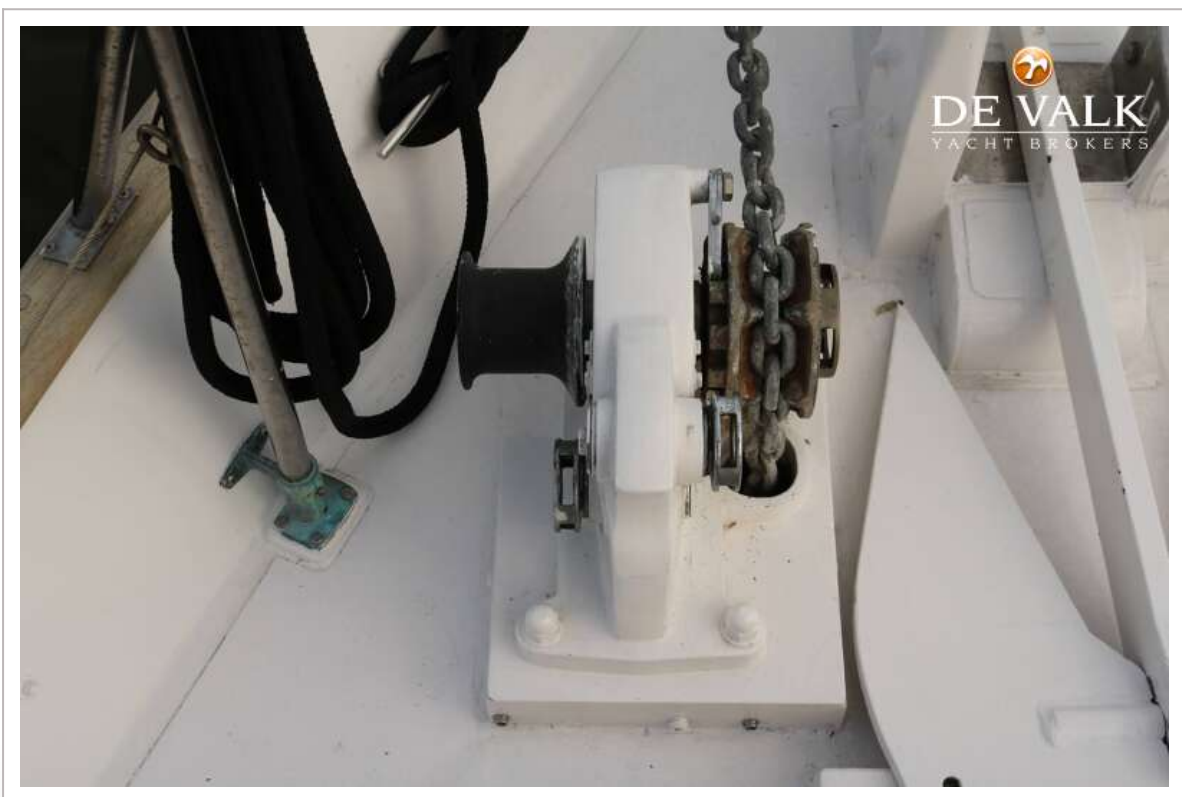
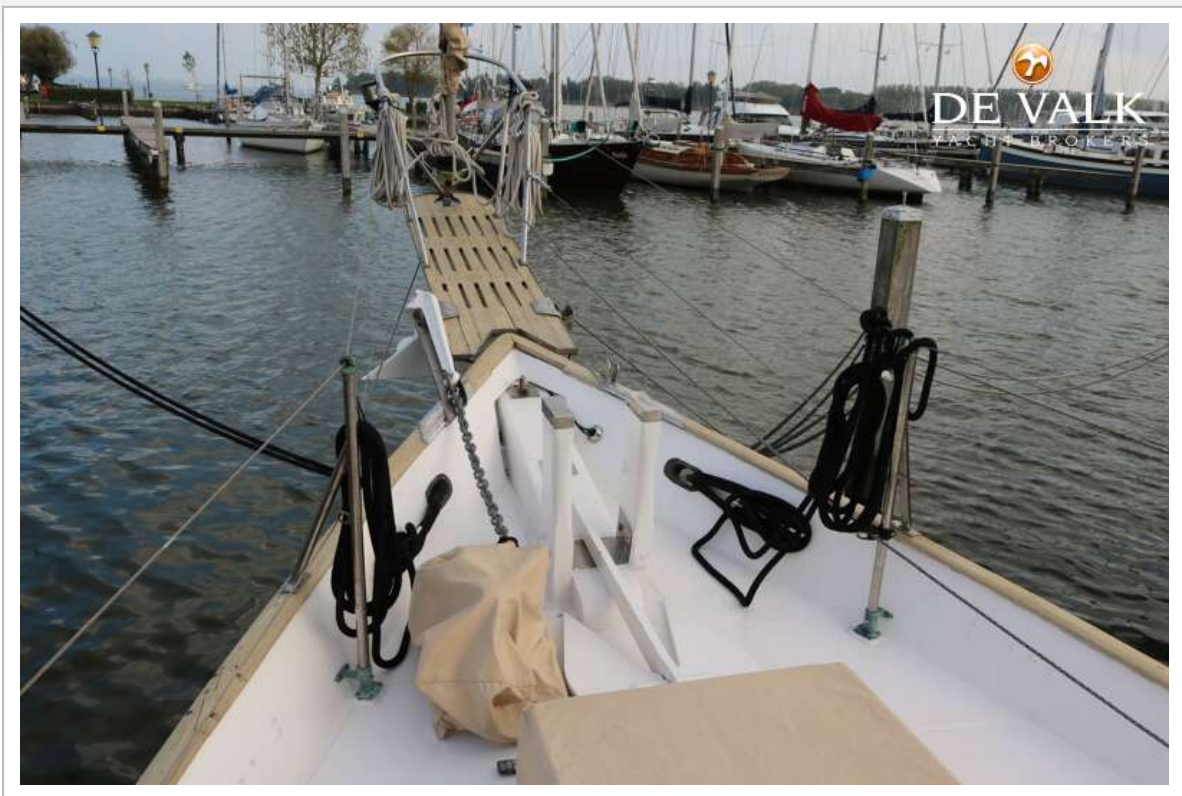


TA CHIAO CT-41

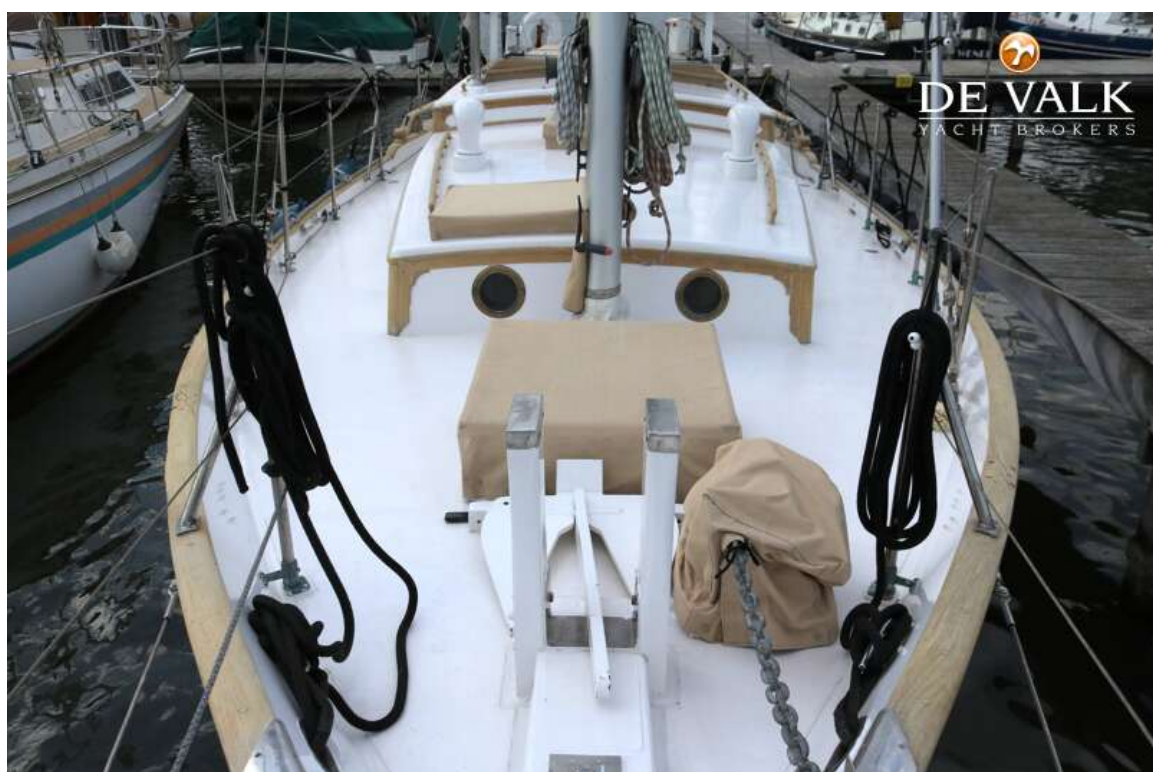


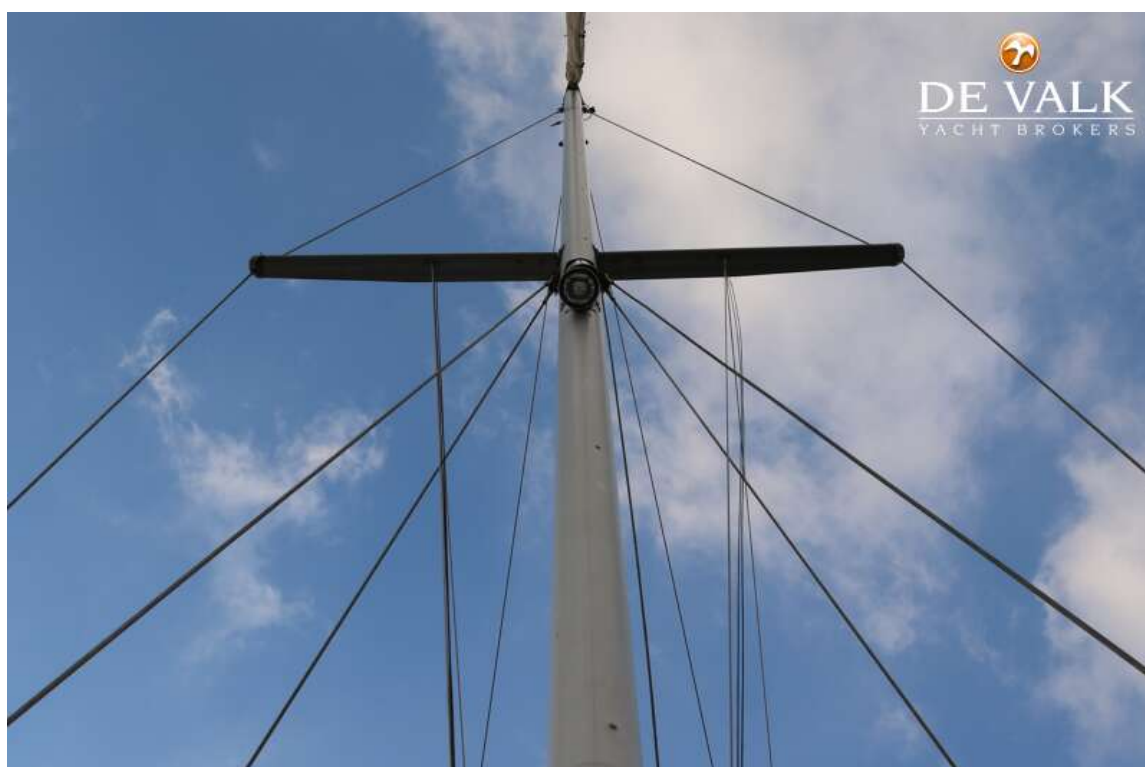


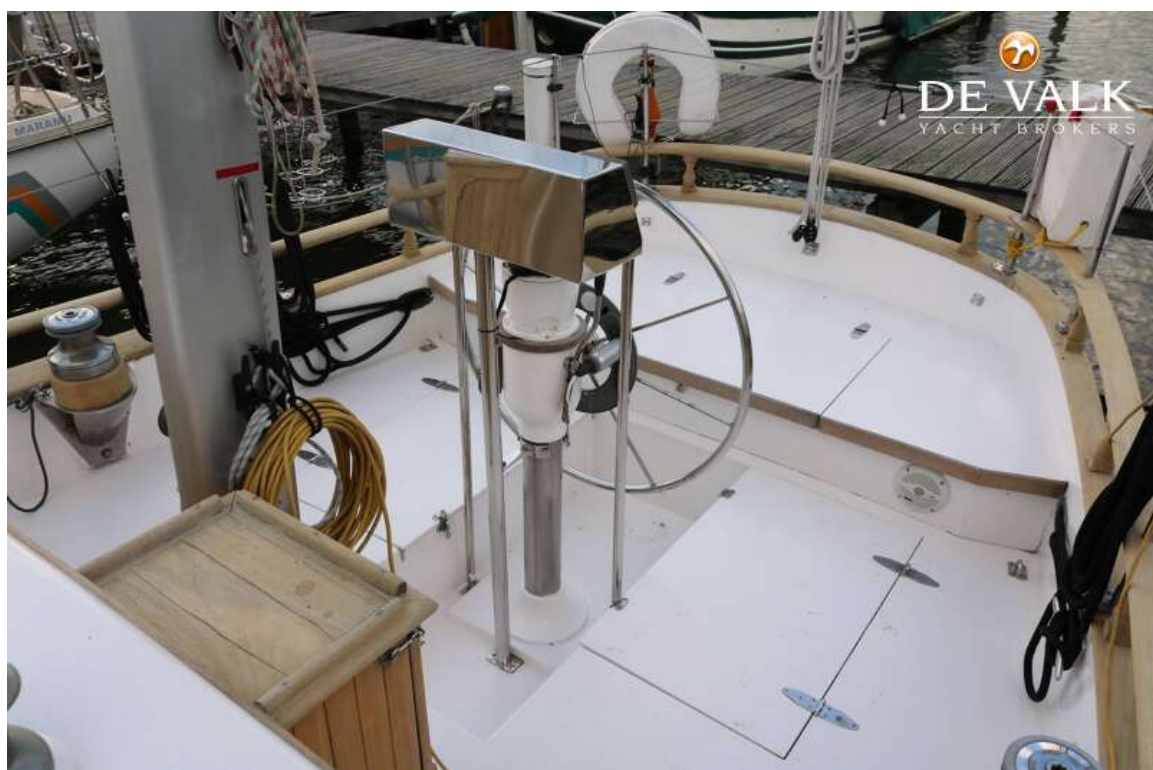




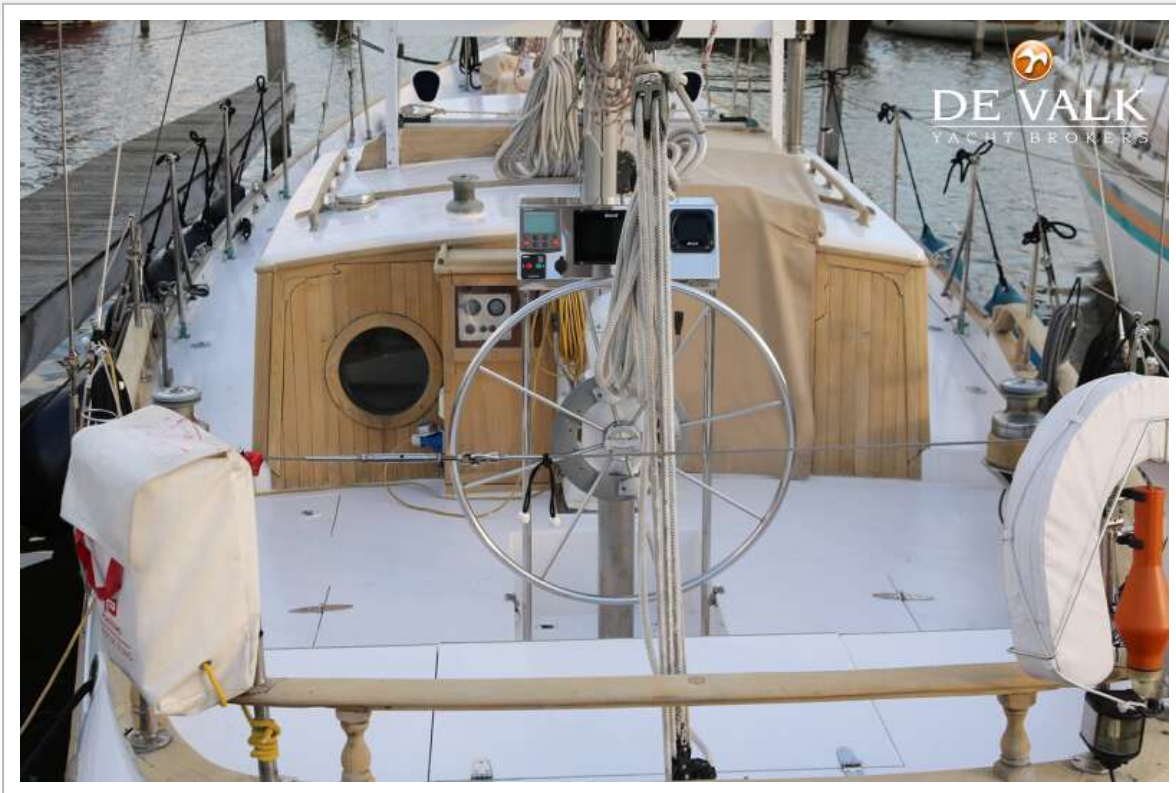
TA CHIAO CT-41







TA CHIAO CT-41



TA CHIAO CT-41







TA CHIAO CT-41





TA CHIAO CT-41

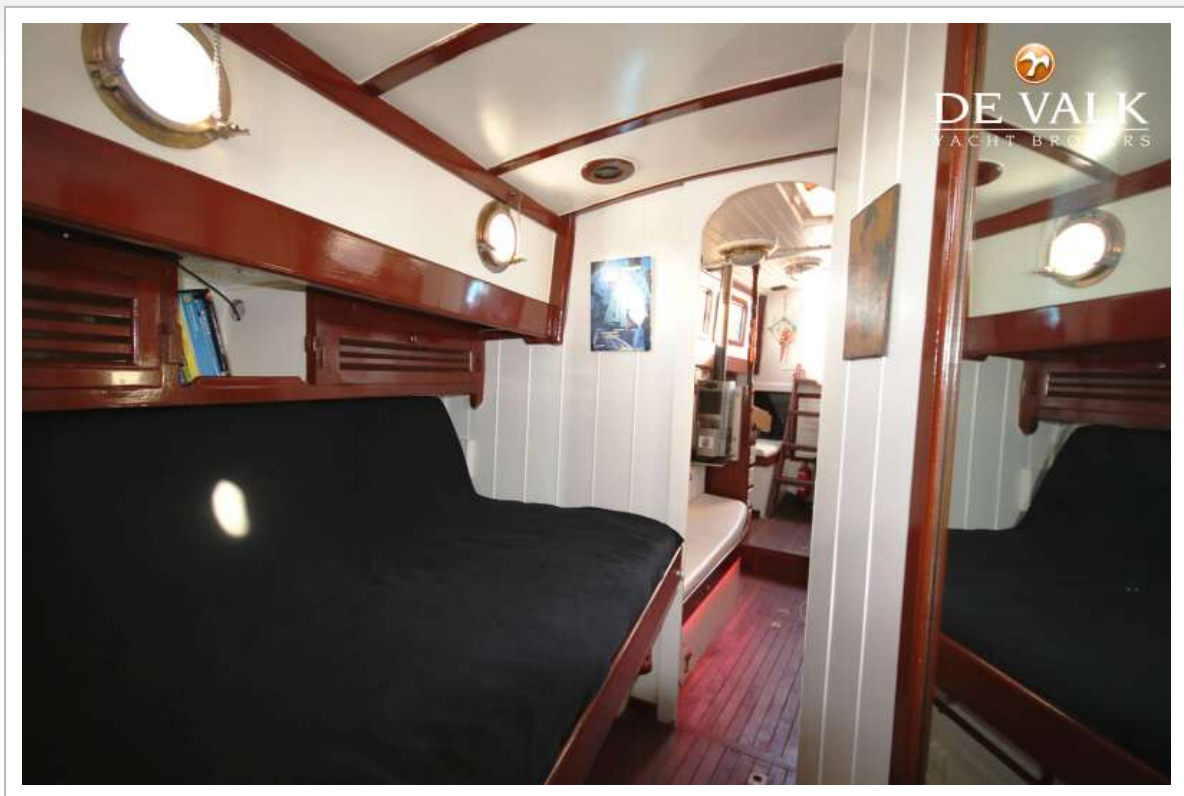


TA CHIAO CT-41

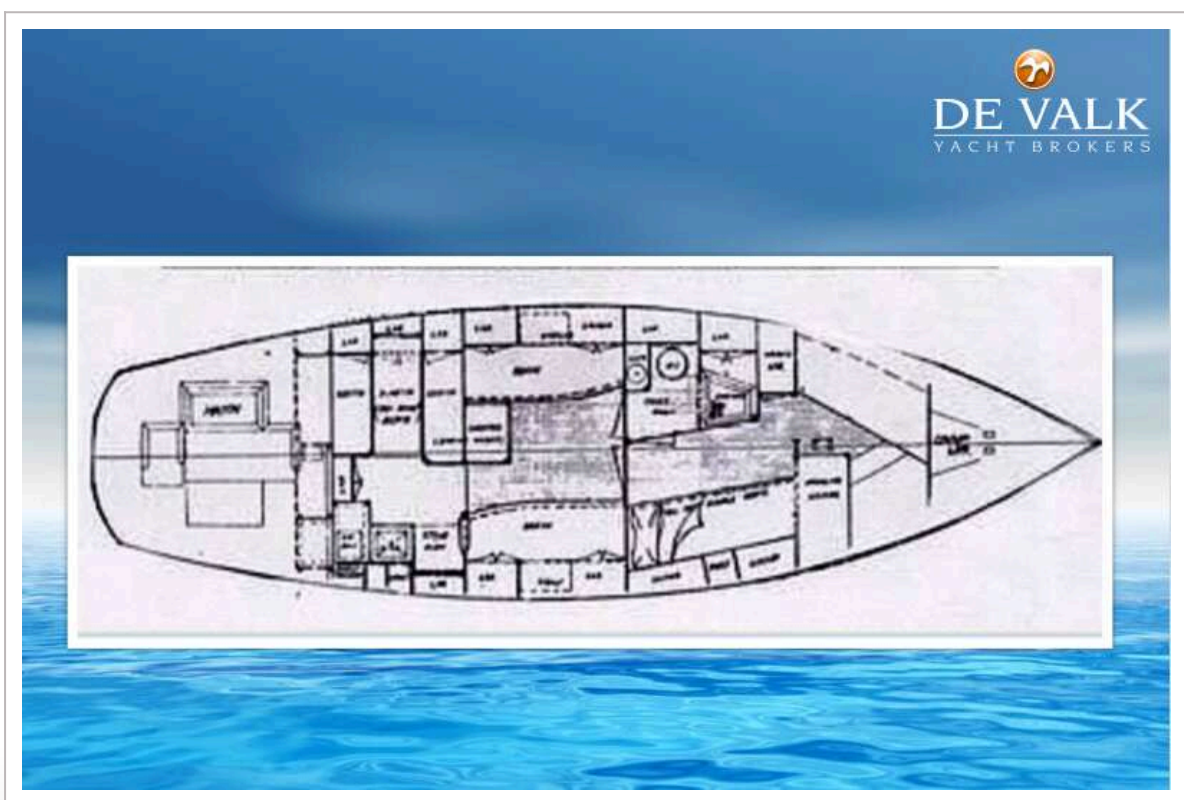


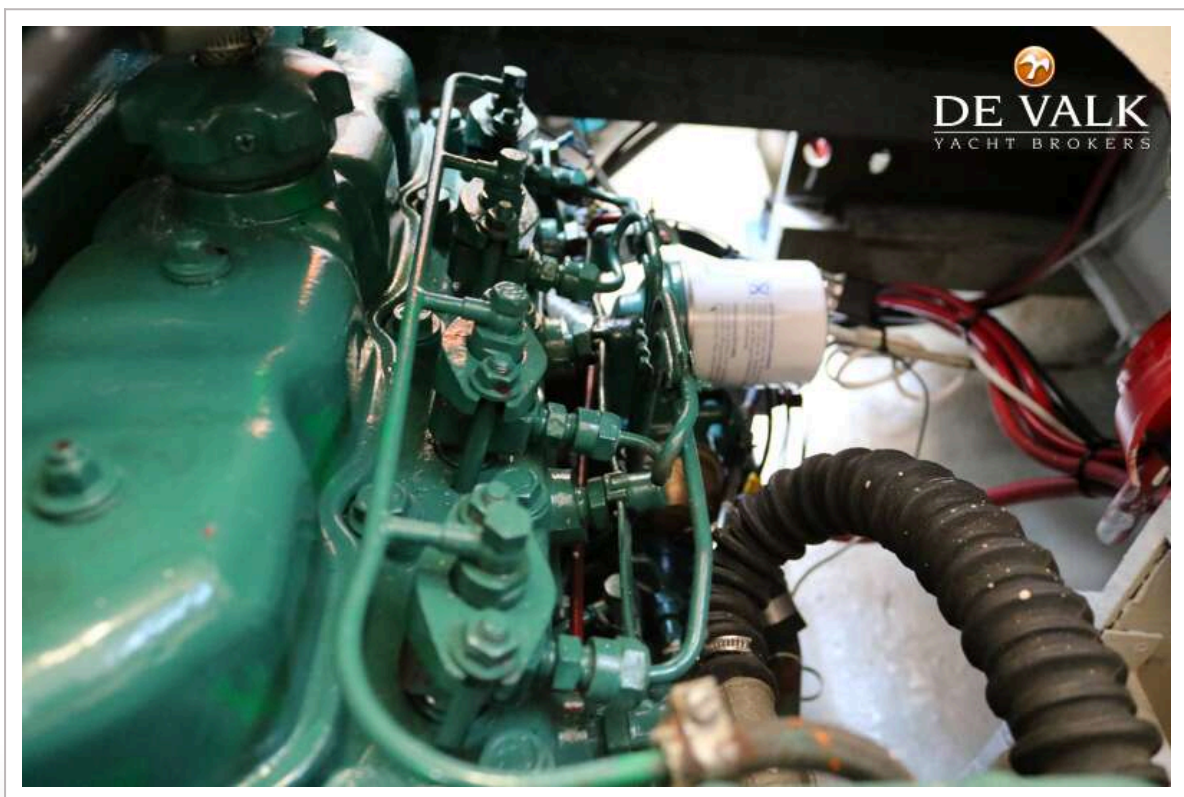
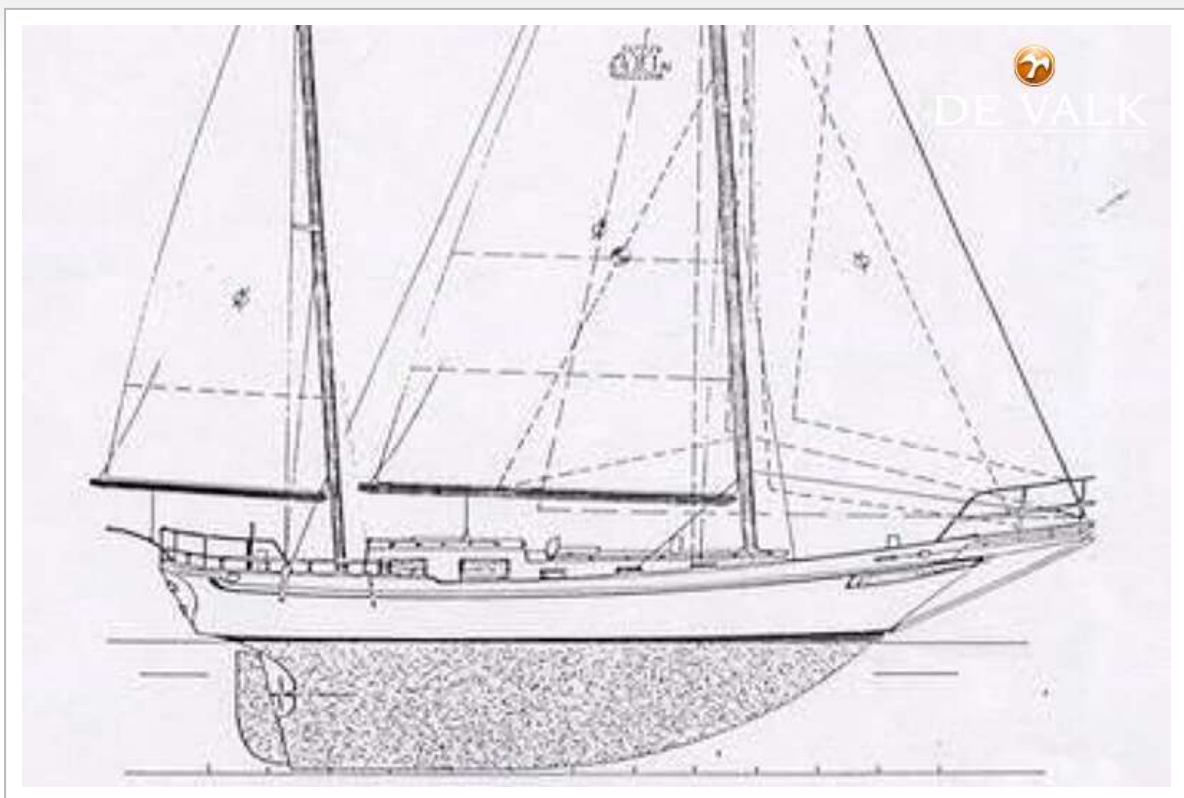






TA CHIAO CT-41







TA CHIAO CT-41

