



## BAVARIA 40 OCEAN



DE VALK  
YACHT BROKERS

# BAVARIA 40 OCEAN

## BROKER'S COMMENTS

2nd Owner from new, this Bavaria 40 Ocean has only been used for private sailing. With the Ocean centre cockpit series, Bavaria fulfilled the demands of their clients for an easy to handle, comfortable and well built cruising yacht. With more intricate ways of construction the Ocean series were more expensive than the Cruiser series. Comes well equipped and in good condition with electric winches and stoway sails. If you want to purchase a good example, please call us!

*Sander van der Voorn*

## SPECIFICATIONS

<b>Dimensions</b>	12.48 x 3.99 x 1.95 (m)	<b>Builder</b>	Bavaria Yachts GmbH
<b>Built</b>	2000	<b>Cabins</b>	2
<b>Material</b>	GRP	<b>Berths</b>	6
<b>Engine(s)</b>	1 x Volvo Penta MD22L BT diesel	<b>Hp/Kw</b>	55.00 (hp), 40.42 (kw)
<b>Asking price</b>	sold (VAT )	<b>Lying</b>	at sales office

## CONTACT

<b>Sales office</b>	De Valk Monnickendam B.V.	<b>Telephone</b>	+31 (0)299 65 63 50
<b>Address</b>	Hoogedijk 6 1145 PM Katwoude NL	<b>E-mail</b>	monnickendam@devalk.nl

## DISCLAIMER

These particulars are given in good faith as supplied but cannot be guaranteed.



## GENERAL

Model	BAVARIA 40 OCEAN
Type	sailing yacht
LOA (m)	12,48
LWL (m)	10,95
Beam (m)	3,99
Draft (m)	1,95
Air draft (m)	18,00
Headroom (m)	1,95
Year built	2000
Launched	2001
Builder	Bavaria Yachts GmbH
Country	Germany
Designer	J & J Design
Displacement (t)	8,3
Ballast (tonnes)	lead 2900
CE norm	A
Hull material	GRP
Hull colour	white
Hull shape	round-bilged
Keel type	fin keel
Superstructure material	GRP
Rubbing strake	stainless steel
Deck material	GRP
Deck finish	teak
Superstructure deck finish	non-skid moulded in
Cockpit deck finish	teak
Antifouling (year)	2017
Dorades	yes
Window frame	stainless steel
Window material	polycarbonate



Deckhatch	yes
Portholes	stainless steel
Fuel tank (litre)	polyethylene 230
Level indicator (fuel tank)	yes
Freshwater tank (litre)	polyethylene 230+150
Level indicator (freshwater)	yes
Blackwater tank (litre)	polyethylene 60 (in 2 tanks)
Level indicator (blackwater)	yes
Blackwater tank extraction	deck extraction + uw line
Wheel steering	cable steering Whitlock
Emergency tiller	yes
More info on paintwork	Uw body in 2014 stripped and covered with 6 layers Primiocon.

## ACCOMMODATION

Cabins	2
Berths	6
Interior	mahogany
Layout	saloon with owner & guest cabin
Floor	teak and holly
Saloon	yes
Headroom saloon (m)	1,97-1,95
Heating	diesel ducted hot air Webasto EVO 55D (2015)
Chart table	yes
Aft Cabin	yes
Dinette	yes
Convertible berth	2,00 x 0,60 2 x, in salon
Galley	yes
Countertop	plastic
Sink	stainless steel 2x
Cooker	calor gas Bavaria 2 burn stainless
Oven	Bavaria



# BAVARIA 40 OCEAN

Fridge	watercooled + freezer compartment
Hot water system	220V + engine 20 ltr
Water pressure system	electrical
Owners cabin	French bed
Bed length (m)	2,00 x 1,70
Wardrobe	hanging/drawers/shelves
Bathroom	en suite I
Toilet	en suite
Toilet system	electric RM 69
Wash basin	in the bathroom
Shower	en suite
Guest cabin 1	v-bed
Bed length (m)	2,00 x 0,80
Wardrobe	hanging/drawers/shelves

## MACHINERY

No of engines	1
Make	Volvo Penta
Type	MD22L BT
HP	55,00
kW	40,42
Fuel	diesel
Year installed	2001
Maximum speed (kn)	8,0
Cruising speed (kn)	6,8
Consumption (l/hr)	3
Engine hours	2200
Engine cooling system	freshwater heat exchanger
Drive	sail-drive
Saildrive seal	not renewed (2009)
Engine controls	bowden cable



<b>Bowthruster</b>	electric Sidepower SP-95T (2015)
<b>Exhaust</b>	watercooled
<b>Propeller type</b>	folding Volvo Penta (2016)
<b>Propeller blades</b>	3
<b>Manual bilge pump</b>	yes
<b>Electric bilge pump</b>	yes
<b>Bilge alarm</b>	yes
<b>Electrical installation</b>	12/220v
<b>Start battery</b>	1 x (2008)
<b>Service battery</b>	+ 3 x Optima 105amp (2015) for electric winches 3x service set total 400amp (2009)
<b>Bowthruster battery</b>	Optima (2015)
<b>Battery monitor</b>	yes
<b>Battery charger</b>	Mastervolt 12v/40am
<b>Inverter</b>	Mastervolt Mass Sine 12v/1200watt
<b>Diode battery combiners</b>	yes
<b>Shorepower</b>	with cable
<b>Extra info</b>	engine hour indicator works intermittently
<b>Extra info</b>	high output 12v alternator spare 3 bladed fixed propeller

## NAVIGATION

<b>Compass</b>	with airbubble Suunto
<b>Electric compass</b>	via autopilot
<b>Depth sounder</b>	Raymarine ST60
<b>Log</b>	Raymarine ST60
<b>Windset</b>	Raymarine ST60
<b>VHF</b>	+ extra handset for cockpit Raymarine Ray 240E (2010)
<b>Autopilot</b>	Raymarine ST6000+
<b>Rudder angle indicator</b>	via autopilot
<b>Radar</b>	2 kW 24nm Raymarine
<b>GPS</b>	Raystar112LP



<b>Plotter</b>	+ extra cockpit E120 display Raymarine E120
<b>Navtex</b>	ICS NAV 6
<b>Electronis chart(s)</b>	46XG (2012)
<b>AIS transponder</b>	Raymarine AIS650
<b>EPIRB</b>	Sattelite2 -406Mhz
<b>Searchlight</b>	yes

## EQUIPMENT

<b>Fixed windscreen</b>	yes
<b>Sprayhood with grab rail</b>	(2013)
<b>Cockpit cover</b>	(2013)
<b>Sun awning</b>	yes
<b>Winter cover</b>	full cover
<b>Cockpit table</b>	yes
<b>Bathing platform</b>	yes
<b>Boarding ladder</b>	stainless steel
<b>Deck shower</b>	hot + cold
<b>Anchor</b>	CQR Plough 27 kg stainless steel
<b>Anchor chain</b>	50 mtr galvanized
<b>Anchor 2</b>	Danforth Fortress
<b>Anchor chain</b>	35mtr leadline
<b>Chain counter</b>	yes
<b>Windlass</b>	electrical Lofrans Cayman 88 12v/1000 watt
<b>Capstan</b>	yes
<b>Deck wash</b>	yes
<b>Sea railing</b>	wire (2016)
<b>Grab rail (superstructure)</b>	stainless steel
<b>Railing side opening gates</b>	yes
<b>Pushpit</b>	yes
<b>Pulpit</b>	yes
<b>Life raft</b>	container



Life raft (pers)	container Plastimo 6 persons
Last life raft survey	2014
Lifebuoy	yes
Danbuoy	yes
Radar reflector	yes
Fenders	8 x cilinder (blauw) 1 x bal (blauw) 1 x fender step (blauw)
Mooring lines	yes
Spare parts	yes
Radio-cd player	Pioneer (2015)
Cockpit speakers	yes
Speakers in salon	yes
Clock - barometer	yes
Fire extinguisher	3 x
Latest extinguisher survey	2014
Extra info	stainless bow protection strip outboard support

## RIGGING

Rigging	fractional
Standing rigging	wire
Brand mast	Seldén
Material mast	aluminium
Spreaders	2 sets
Mainsail	(2010)
Stoway mast	yes
High aspect	Van Vliet (2012)
Genoa II	Van Vliet (2009)
Genoa furler	Furlex 300 S
Genoa cover	yes
A-symmetric spi	yes
Removable innerforestay	yes
Stormjib	on inner forestay





# BAVARIA 40 OCEAN

<b>Reefing System</b>	main in-mast furling
<b>Backstay adjuster</b>	mechanical Hasselfors
<b>Boomvang</b>	mechanical and tackle Selden Rodkicker
<b>Primary sheet winch</b>	electric 2 x Harken 46EST (2014)
<b>Secondary sheet winch</b>	2 x Harken 40ST
<b>Halyard winches</b>	2 x Harken 40ST
<b>Reefing winch</b>	Selden
<b>Winchcovers</b>	yes
<b>Spi-pole</b>	aluminium
<b>Extra info</b>	alum. turnbuckle covers



# BAVARIA 40 OCEAN



# BAVARIA 40 OCEAN





# BAVARIA 40 OCEAN



# BAVARIA 40 OCEAN





# BAVARIA 40 OCEAN

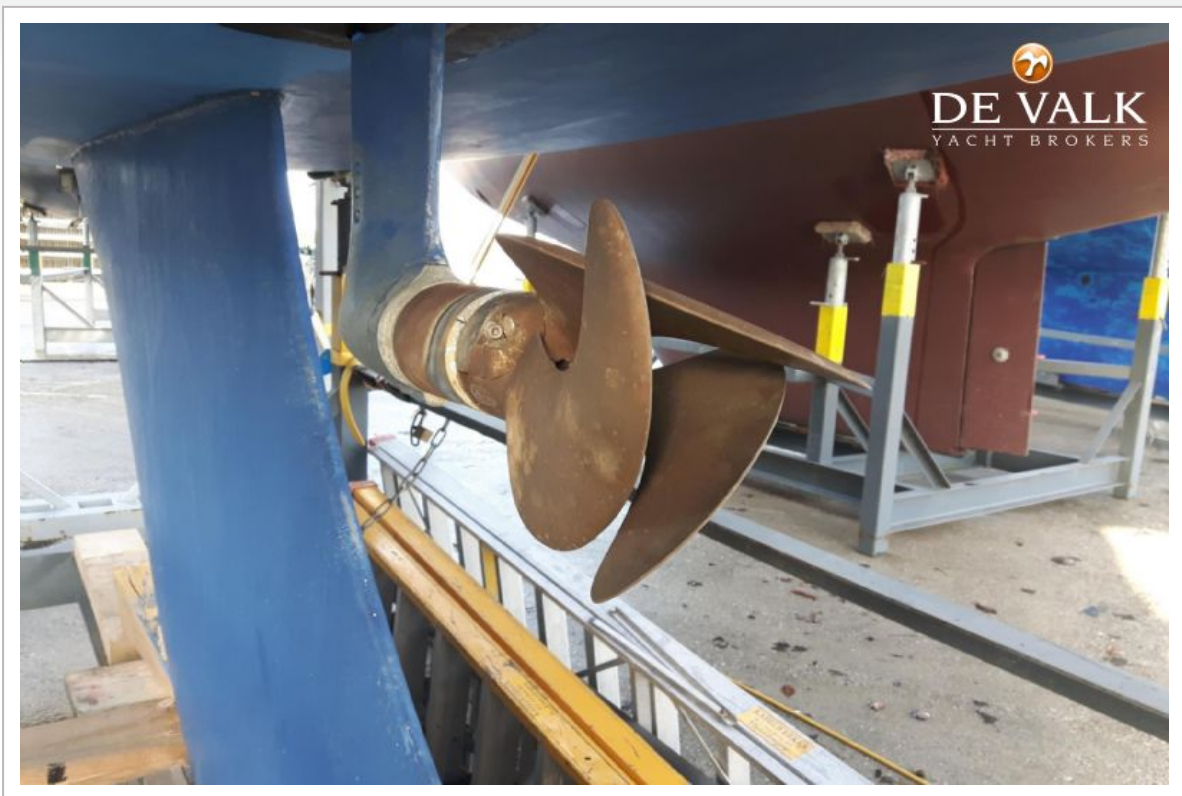


# BAVARIA 40 OCEAN





# BAVARIA 40 OCEAN





# BAVARIA 40 OCEAN

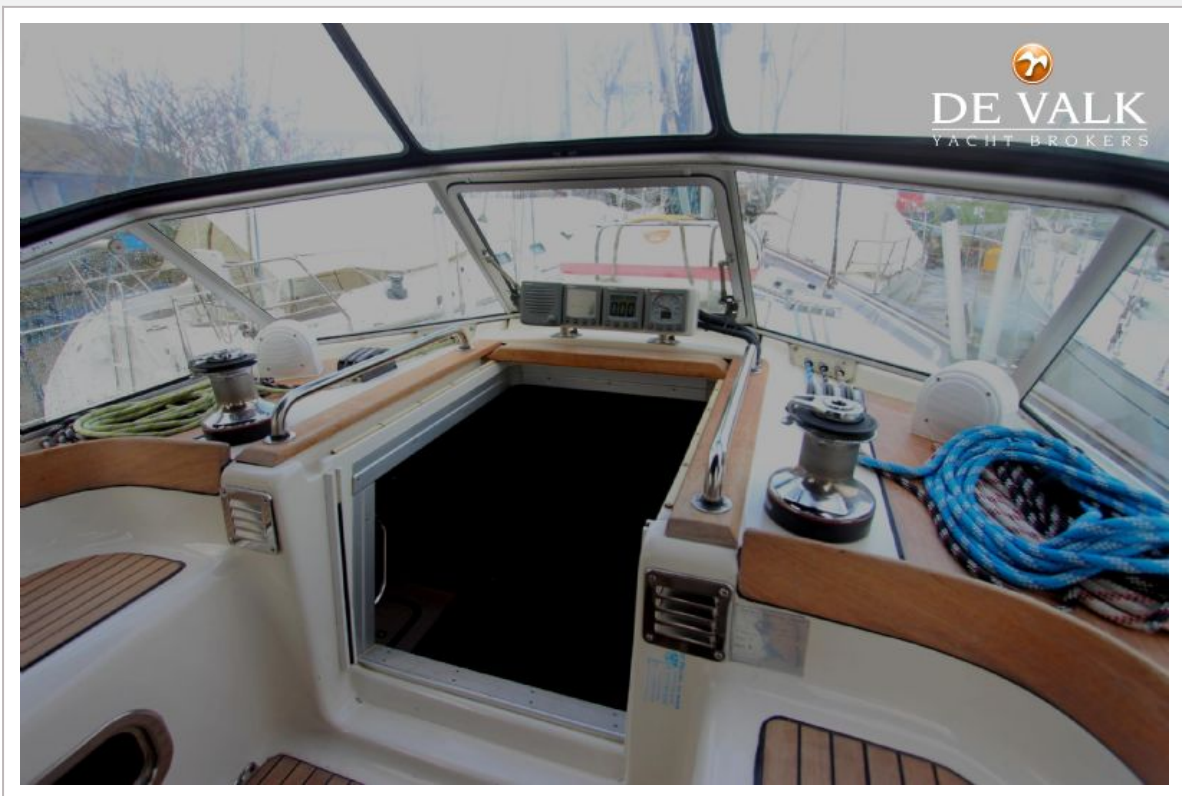


# BAVARIA 40 OCEAN





# BAVARIA 40 OCEAN



# BAVARIA 40 OCEAN





# BAVARIA 40 OCEAN



# BAVARIA 40 OCEAN

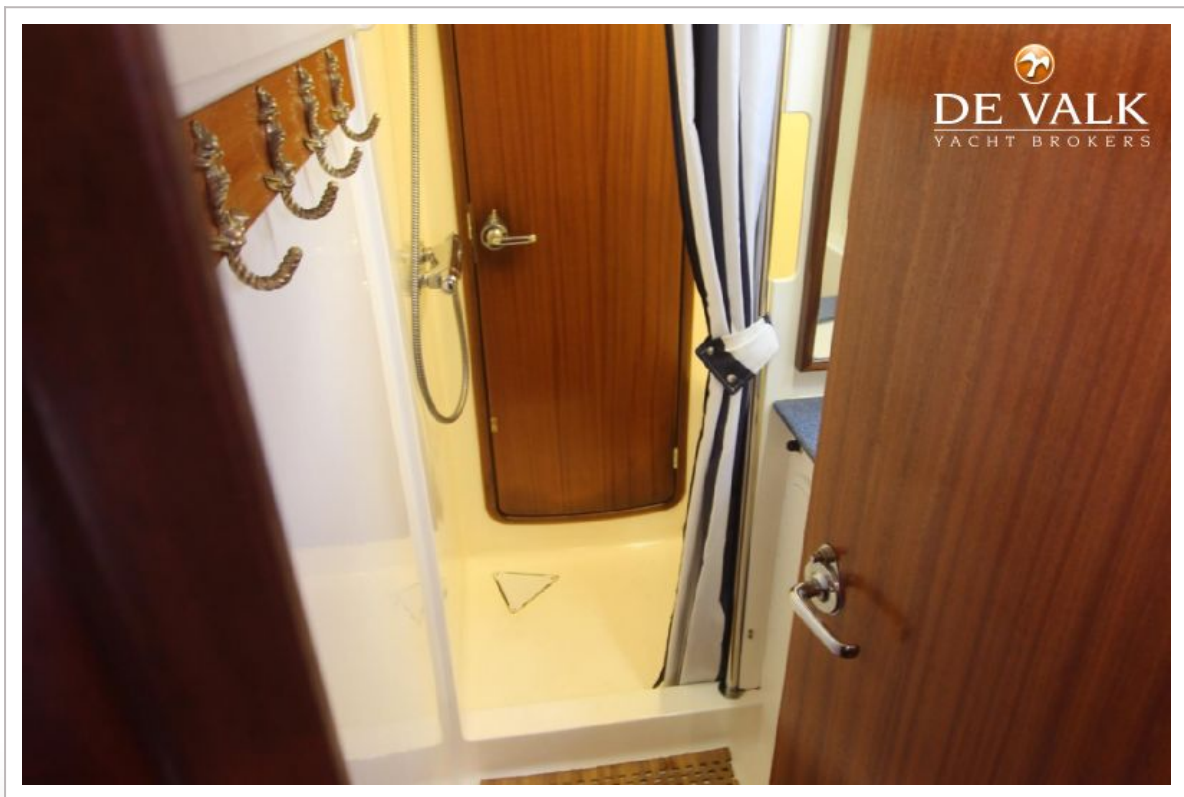




# BAVARIA 40 OCEAN



# BAVARIA 40 OCEAN





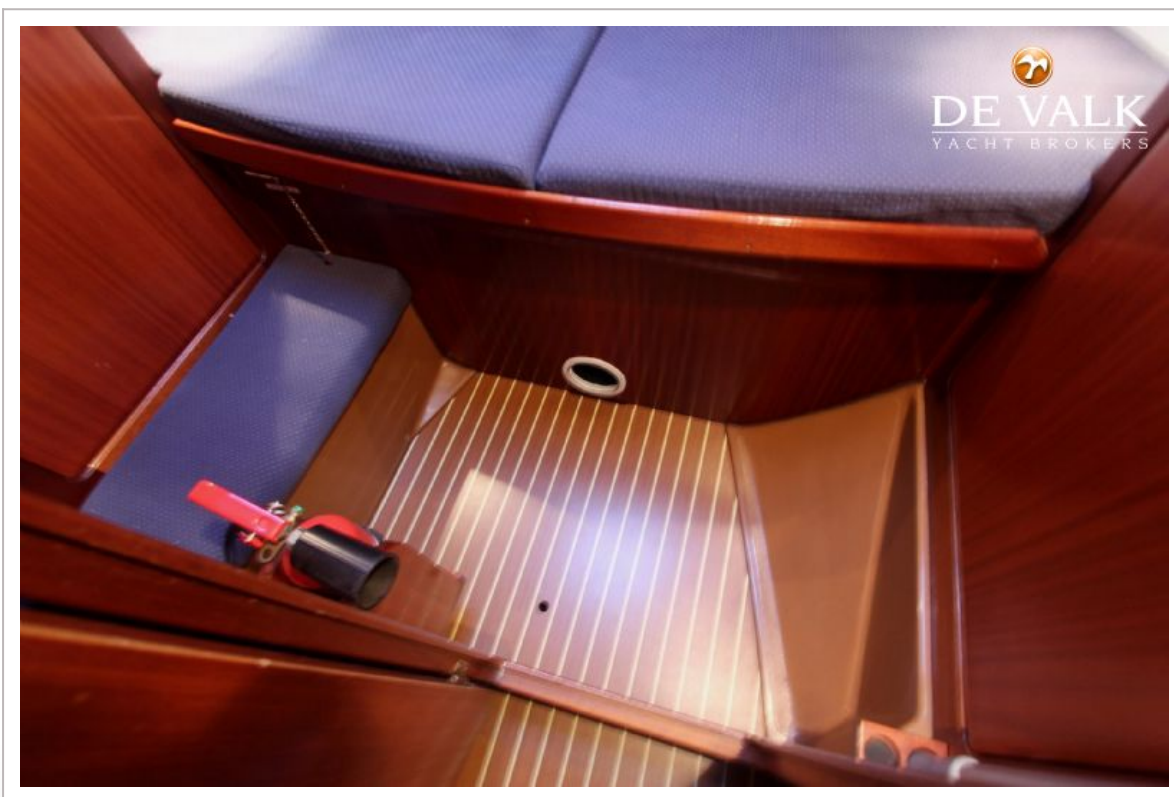
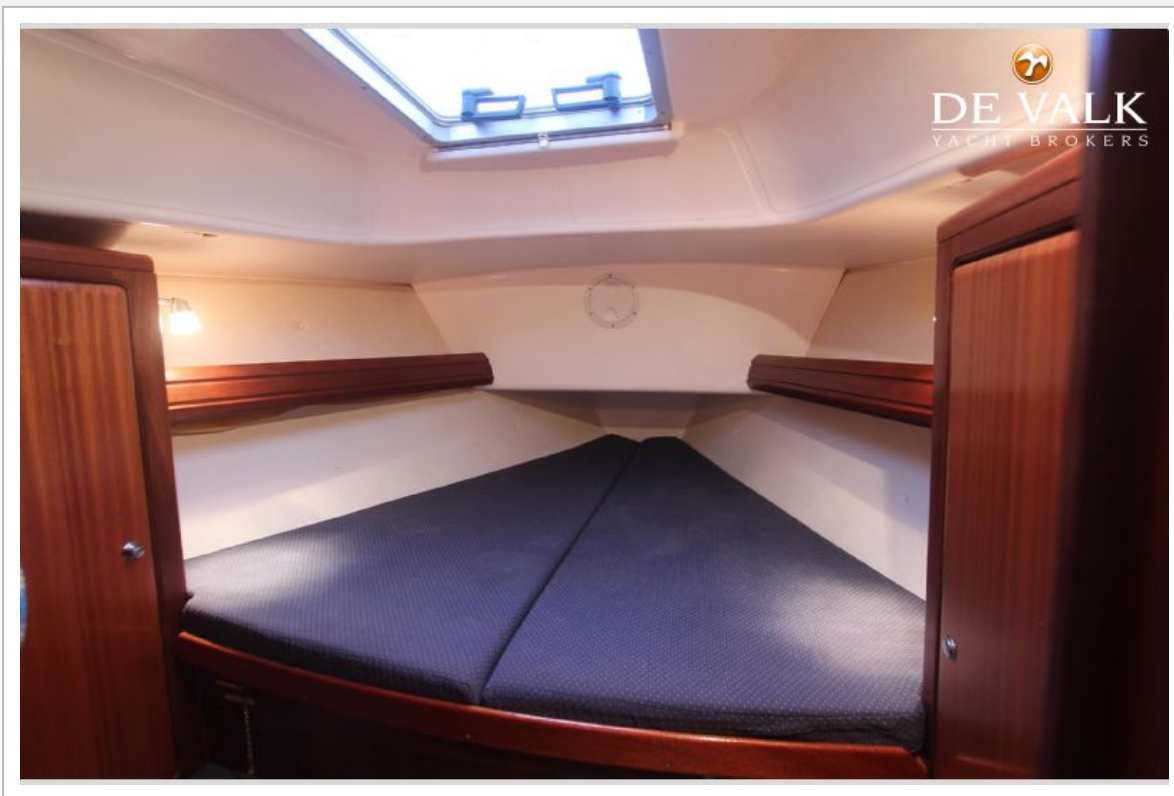
# BAVARIA 40 OCEAN



# BAVARIA 40 OCEAN

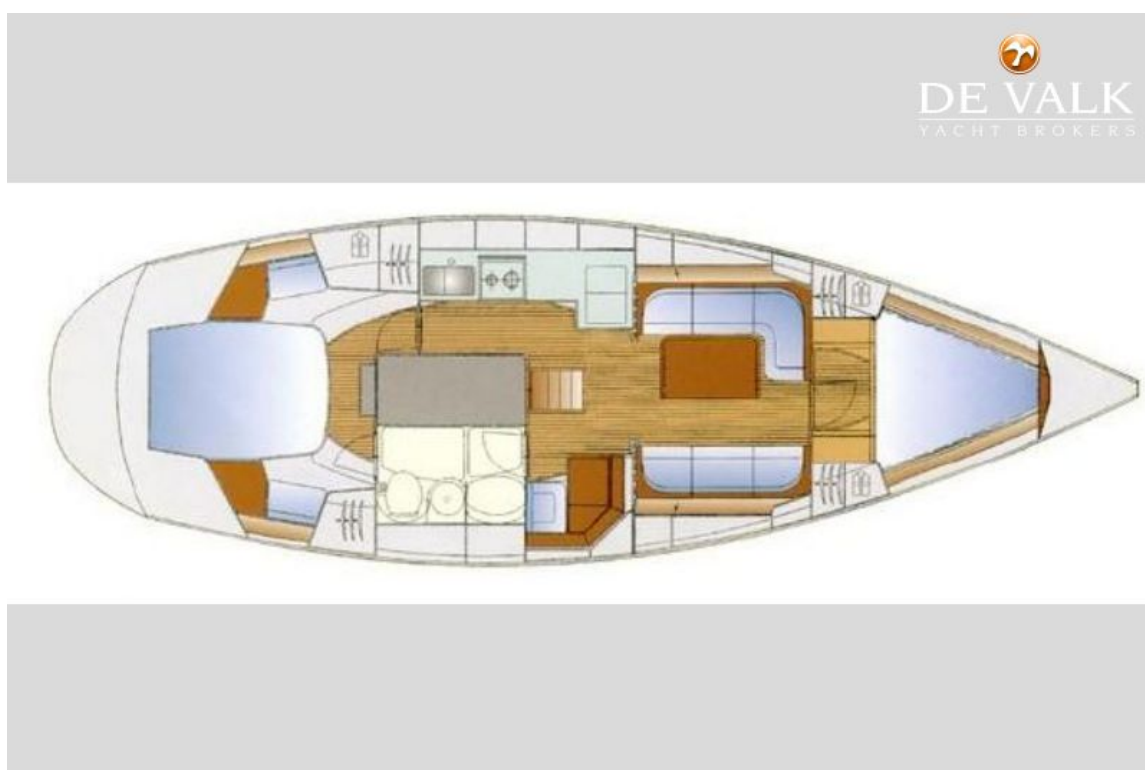
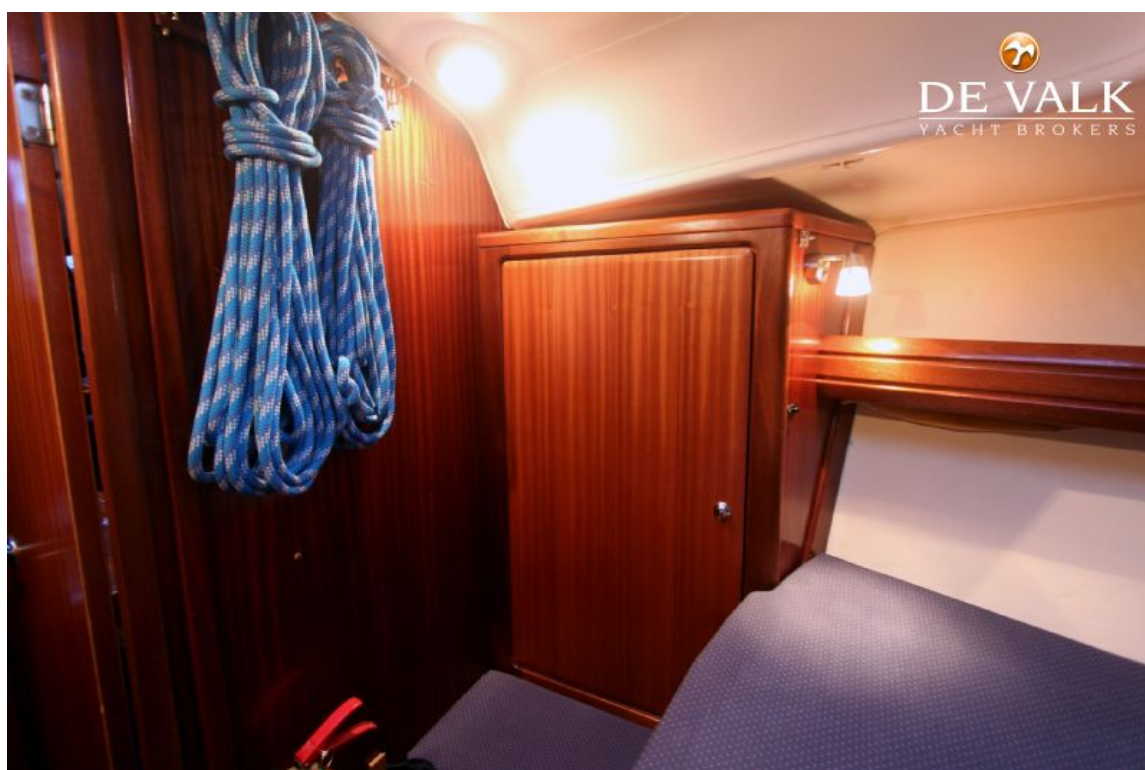


# BAVARIA 40 OCEAN

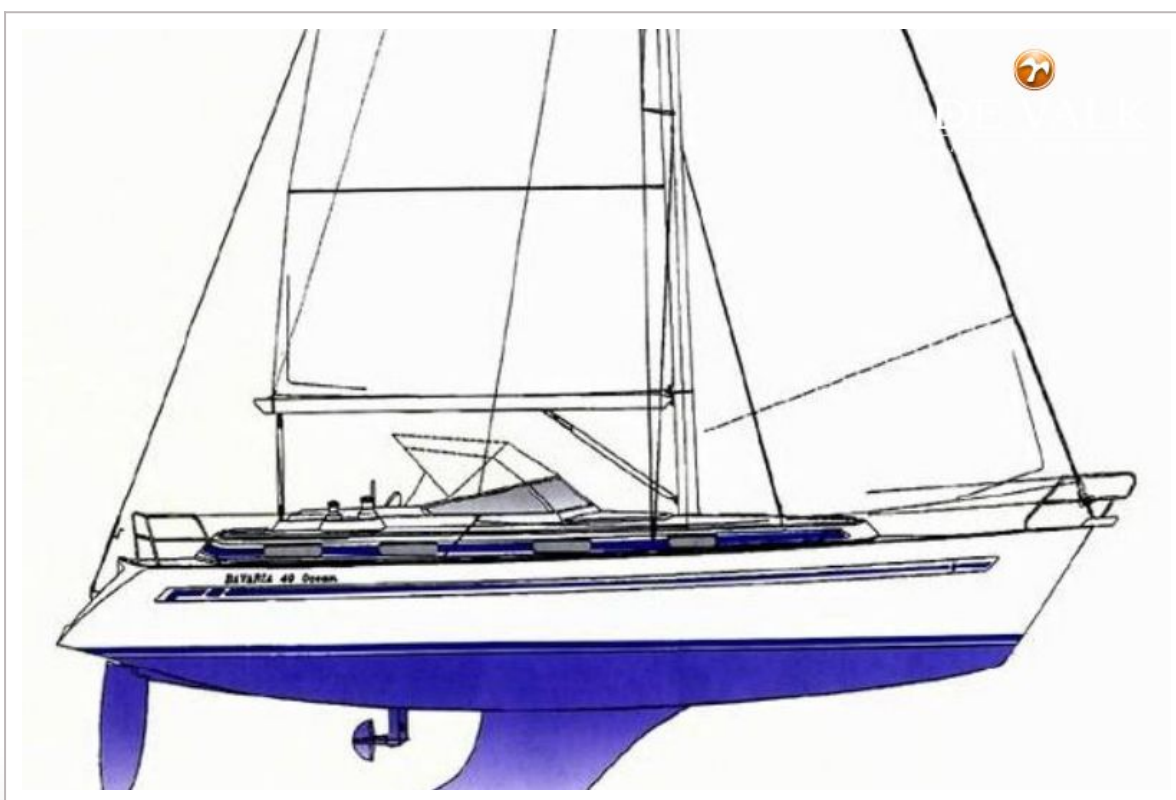




# BAVARIA 40 OCEAN

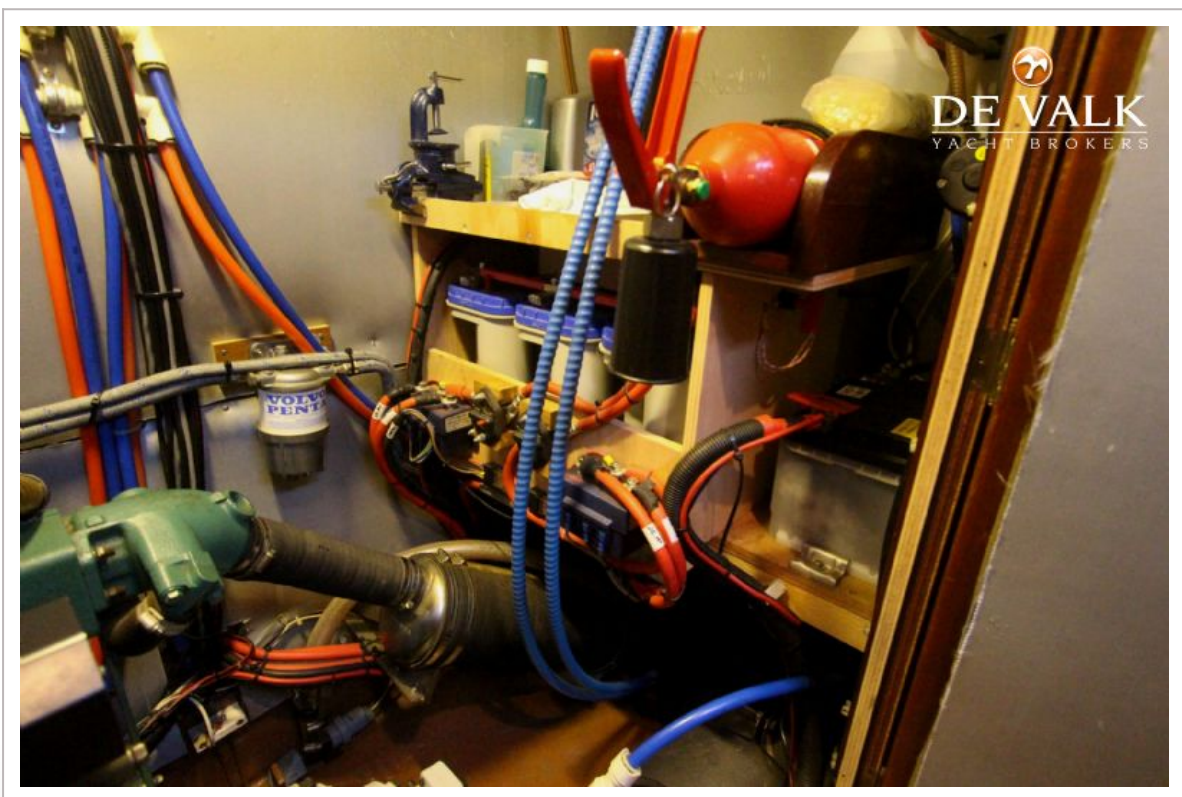
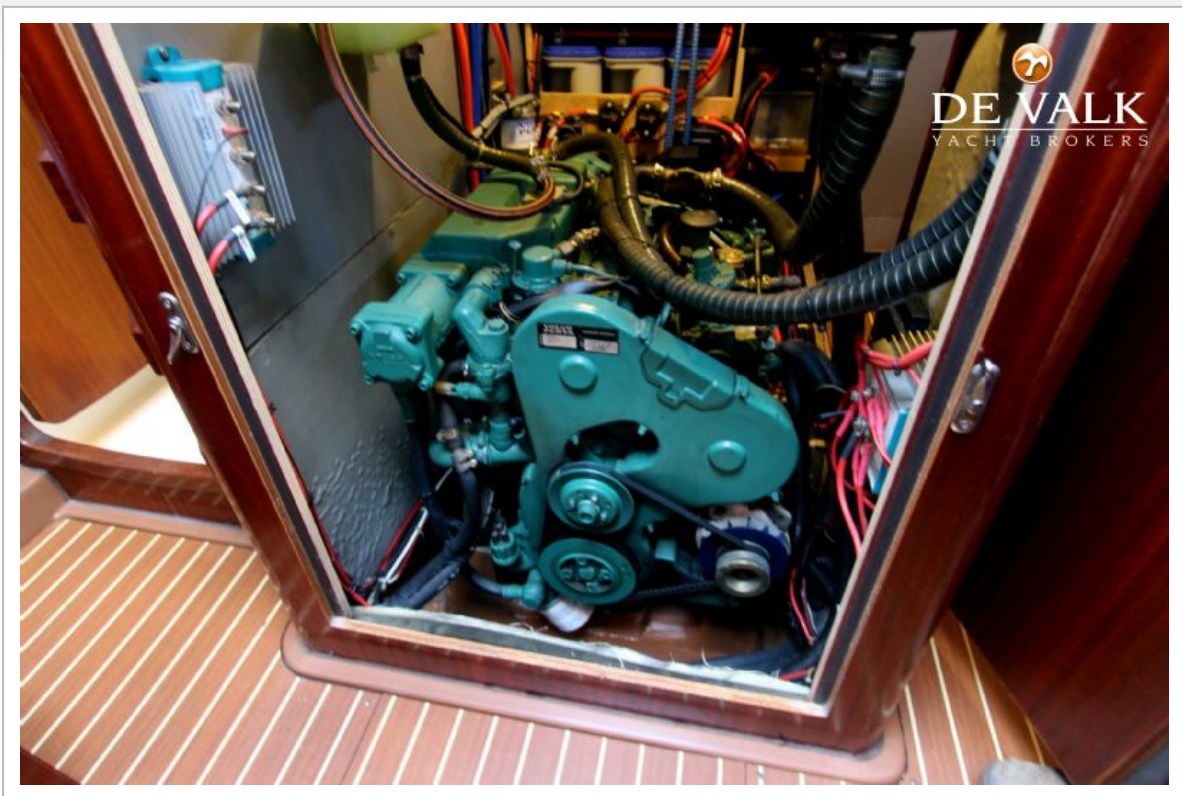


# BAVARIA 40 OCEAN





# BAVARIA 40 OCEAN



# BAVARIA 40 OCEAN

