



DE VALK
YACHT BROKERS



FLEMING 55



DE VALK
YACHT BROKERS

BROKER'S COMMENTS

Purpose-robust built for the Trawler lifestyle, this owner-version Fleming 55 is the ultimate cruising machine. A custom owner's cabin rivalling the Fleming 65 sets the tone, handcrafted throughout, with an abundance of space and storage that rewards long passages and lazy anchorages alike. For couples, friends and family the 2+2+2 layout flows naturally between privacy and togetherness. A proven passage maker pedigree means you cruise with confidence. You dream your dreams, Fleming creates yachts that make your dreams come actually true. One owner from new. Located in the Med.

Marc Weijenberg

SPECIFICATIONS

Dimensions	18.52 x 4.88 x 4,88 / 1.52 (m)	Builder	Flemming Yachts
Built	2008	Cabins	2
Material	GRP	Berths	6
Engine(s)	2 x Cummins QSC8.3 500HOI diesel	Hp/Kw	2 x 500.00 (hp), 367.50 (kw)
Asking price	on request (VAT Paid)	Lying	France

CONTACT

Sales office	De Valk Thuishaven	Telephone	+31 35 5829042
Address	Marinaweg 8 (postal address) 1361 AC Almere NL	E-mail	thuishaven@devalk.nl

DISCLAIMER

These particulars are given in good faith as supplied but cannot be guaranteed.



GENERAL

Model	FLEMING 55
Type	motor yacht
LOA (m)	18,52
LWL (m)	15,49
Beam (m)	4,88
Draft (m)	1,52
Draft min (m)	4,88
Air draft (m)	5,95
Headroom (m)	1,98
Year built	2008
Builder	Flemming Yachts
Country	Taiwan
Designer	Larry Drake
Displacement (t)	35
CE norm	A
Hull material	GRP
Hull colour	off-white
Hull shape	hard chine
Keel type	long keel
Superstructure material	GRP
Rubbing strake	stainless steel
Deck material	GRP
Deck finish	teak
Superstructure deck finish	teak
Cockpit deck finish	teak
Window material	tempered glass
Deckhatch	with sunshade and mosquito screen
Portholes	stainless steel Incl. stainless steel covers & screens
Flybridge	with settee + cushions, teak table, teak deck fitted, low level led courtesy lighting and deck lighting
Flybridge cover	covers for flybridge helmstation and table



Radar arch	collapsible
Fuel tank (litre)	GRP 3880 (in 4 tanks)
Level indicator (fuel tank)	yes
Freshwater tank (litre)	polyethylene 1130 (in 4 tanks)
Level indicator (freshwater)	yes
Blackwater tank (litre)	GRP 380
Level indicator (blackwater)	Aim-Black-Water TC controller
Blackwater tank extraction	deck extraction + pump With toilet waste change over valves
Inside helm position	hydraulic Hynautic
Flybridge helm position	hydraulic Hynautic
More info on hull	solid GRP/Vinylester laminated hull (no core), deck and superstructure constructed in GRP / M-Foam core cell laminates. Extra lead/foam insulation between accommodations and bulkheads.
Extra info	Wide, protected side decks feature a Portuguese bridgedeck to ensure safe deck access all around and in all weather. Teak decks are glued (teak requires attention) Rated economical range; 2500-3000nm@7knots
Extra info	24v Reverso fuel transfer/polishing system, Duplex Racor fuel filter system, upgraded aircon pump backup system with change over valves.
Extra info	Teak on swimstep, reinforced transom for passerelle, teak on anchor platform, cockpit seat lockers, insulated box in cockpitm additional cockpit & deck lighting.

ACCOMMODATION

Cabins	2
Berths	6
Layout	classic handcrafted detailed teak finish
Floor	teak and holly
Open cockpit	yes
Pilot house	with settee (convertible pilot-berth), Stidd sturdy captain chair and pull-down blinds



Deck saloon	Open layout, well appointed saloon with ample seating, table, twin chairs and more than adequate storage space. The settee converts into an extra berth. TV is nicely set on a Bennet TV-lift.
Headroom saloon (m)	1,98
Heating	central hot water Eberspacher with ducts
Air-conditioning	Cruissair 4 units (7000-5000-16000-16000 BTU)
Chart table	in the pilothouse
Dinette	L-shape with lots of storage
Convertible berth	in pilothouse and saloon; 2,05 x 0,70 and 2,00 x 0,50m
Sliding door to aft deck	twin sliding doors
Galley	U-shaped with ample storage, worktop area and daylight
Countertop	granite
Sink	stainless steel 2 x
Cooker	electric Bosch 4-burner (220v ceramic)
Extractor	yes
Microwave/oven combi	Siemens Sturdioline (220v)
Fridge	Bosch (2026)
Freezer	Bosch (2026)
Wine cooler	in salon bar Lec
Hot water system	220V + engine 75ltr
Water pressure system	electrical
Dishwasher	Miele (220v)
Ice maker	combined in fridge/freezer
Coffee maker	Krups (220v)
Crockery	yes
Waste compactor	in galley Broan plus Insicator foodwaste disposer
Owners cabin	double bed
Bed length (m)	2,15 x 1,90m, headroom: 1,95m
Wardrobe	hanging/drawers/shelves
Bathroom	en suite I
Toilet	en suite
Toilet system	electric Headhunter



Wash basin	in the bathroom
Shower	separate
Extra info	The owners cabin is comparable to the Fleming 65. It has been custom built & improved by Fleming, creating a king size bed, more space, light and storage space. This is a feature to behold and experience.
Guest cabin 1	twin single
Bed length (m)	2 x 1,94 x 0,80m, headroom 1,98m
Wardrobe	hanging and shelves
Bathroom	separate II
Toilet	separate
Toilet system	electric Headhunter
Wash basin	in the bathroom
Shower	separate
Extra info	Both shower have 1,98m headroom
Extra info	All bathrooms & showers have been fitted with granite worktops and floors.
Washing machine/dryer combi	(220v)
Extra info	"Dumb waiter" from galley direct to flybridge so messing about with trays.
Extra info	A part of the bed in the ownercabin flips up (hydraulic) to access the extra large storage space.

MACHINERY

No of engines	2
Make	Cummins
Type	QSC8.3 500HOI
HP	500
kW	367.50
Fuel	diesel
Year installed	2008
Maximum speed (kn)	15
Cruising speed (kn)	7



Consumption (l/hr)	12
Engine hours	1390
Engine cooling system	freshwater heat exchanger
Drive	shaft
Engine controls	2 x Glendinning electric plus extra docking controller
Bowthruster	electric Sidepower SP-240 TCI
Sternthruster	electric Sidepower SP170-250 TC
Gearbox	hydraulic Twin Disc MG5075A
Exhaust	watercooled
Thrust bearing	2 x Aqua-Drive
Propeller type	fixed
Propeller blades	4 x
Propeller shaft material	stainless steel
Shaft lubrication	water
Manual bilge pump	1 x
Electric bilge pump	2 x
Bilge alarm	yes
Electrical installation	12/24/220v
Generator	silent separator Onan MDKBD 13,5kW-50hz (in soundproofing box)
Running hours generator	450
Start battery	4 x (2022/2025)
Service battery	12 x 6v/900ah (increased capacity)
Navigation Battery	1 x 12v/105ah plus DC-DC converter
Battery monitor	Mastervolt Masterlink BTM3
Battery charger	Mastervolt 24v-50amp for service batteries, Mastervolt IVO 24v-15amp for start batteries
Battery charger/inverter	Out Back 24v-85amp / 24v-220v-300 watt
Shorepower	with cable
Insulation transformer	2 x Charles Marine 7.5KVA
Stabilizers	fin ABY hydraulic system
Trimtabs	Bennett



Extra info	The starboard engine has a PTO for the hydraulic system onboard.
Extra info	Shorepower connections fore and aft with auto AC supply selector and soft-start controllers. 2 x 110amp Alternators on main engines
Extra info	Backup freshwater pump with switch-over valves

NAVIGATION

Compass	Ritchie
Compass on flybridge	Ritchie
Electric compass	via the autopilot
Depth sounder	Raymarine ST60+
Log	Raymarine ST60+
Windset	Raymarine ST60+
Repeater	Raymarine ST60+ for log/depth/windset
VHF	Raymarine Ray240E + flybridge set
Autopilot	Raymarine ST8002 (with remote control)
Rudder angle indicator	VDO
Radar	Raymarine Quantum
GPS	Furuno GP-32 Waas
Plotter/GPS	2 x Raymarine Axiom Pro 16S plus RS150 GPS receiver (2022)
Navtex	Furuno NX300
Electronic chart(s)	yes
Navigation lights	yes

EQUIPMENT

Bimini	on flybridge
Cockpit table	yes
Cockpit chairs	4 x
Bathing platform	yes
Transom door	yes



Gangway	Besenzoni hydraulic + remote
Deck shower	hot & cold water
Anchor	100lbs CQR (stainless)
Anchor chain	300ft/90mtr 3/8th Acco chain
Chain counter	displays in pilothouse and flybridge
Windlass	Lofrans Falkon 24v/1500
Capstan	on windlass and 2 x Lewmar mooring cable master capstans forward deck
Deck wash	fresh/seawater supply
Dinghy	rigid inflatable Highfield CL290
Outboard	Yamaha F4B 4 hp (4-stroke)
Deck crane	hydraulic Steelhead Marine 1000lbs/450kg
Sea railing	stainless steel
Grab rail (superstructure)	stainless steel
Railing side opening gates	2 x
Pulpit	stainless steel
Life raft	container Plastimo Transocean (2022)
Life raft (pers)	6
Rope cutter	yes
Wiper	3 x (with wash)
Window heating	demister
Horn	air pressure
Fenders	yes
Mooring lines	yes
TV	LG on tv-lift in salon
TracVision ball	yes
Radio-cd player	Bose entertainment system
DVD player	Bose entertainment system
Speakers in salon	yes
Clock - barometer	Weems & Plath
Extinguisher in engine room	Fireboy automatic (expired)



FLEMING 55



FLEMING 55



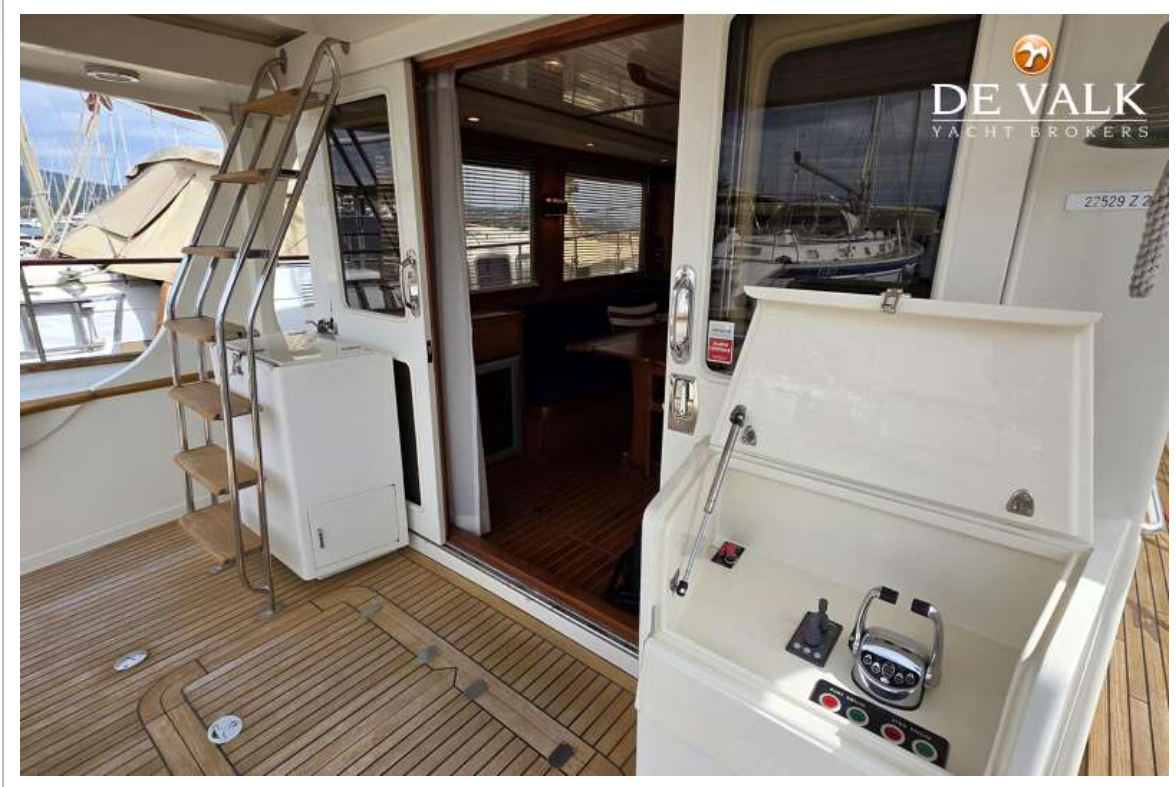
FLEMING 55



FLEMING 55



FLEMING 55



FLEMING 55



FLEMING 55



FLEMING 55



FLEMING 55



FLEMING 55



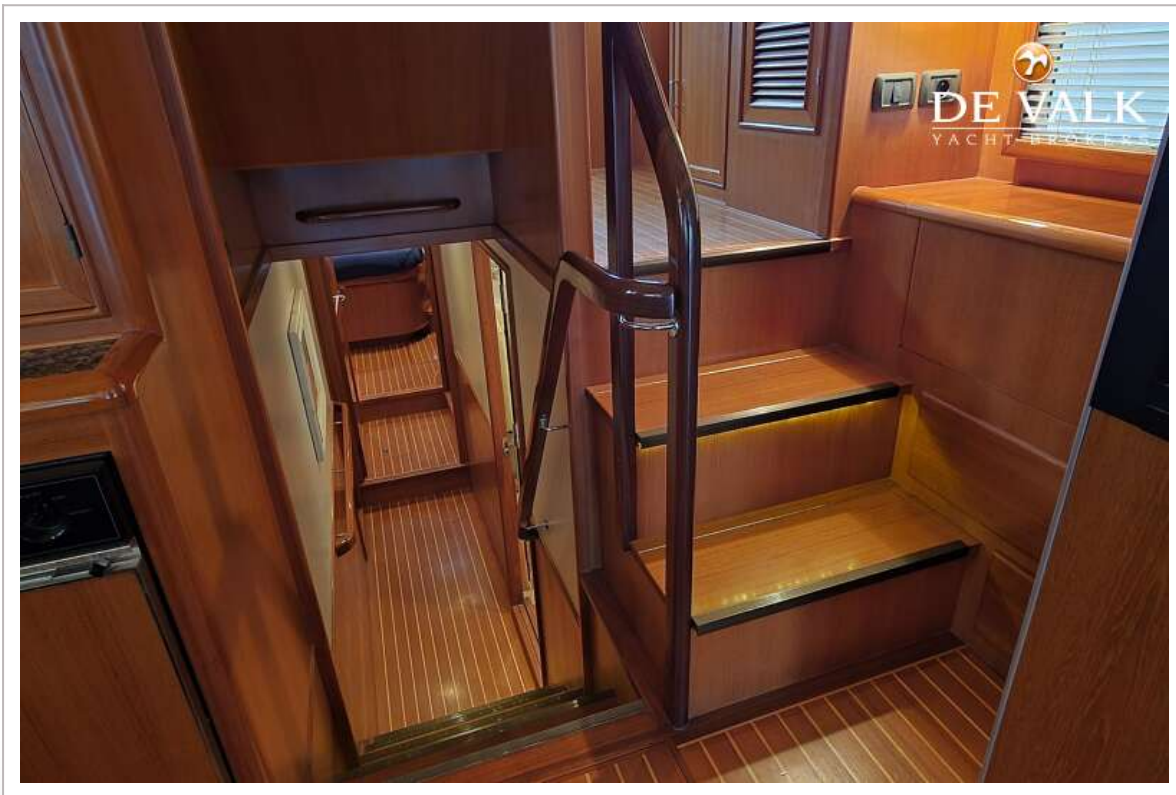
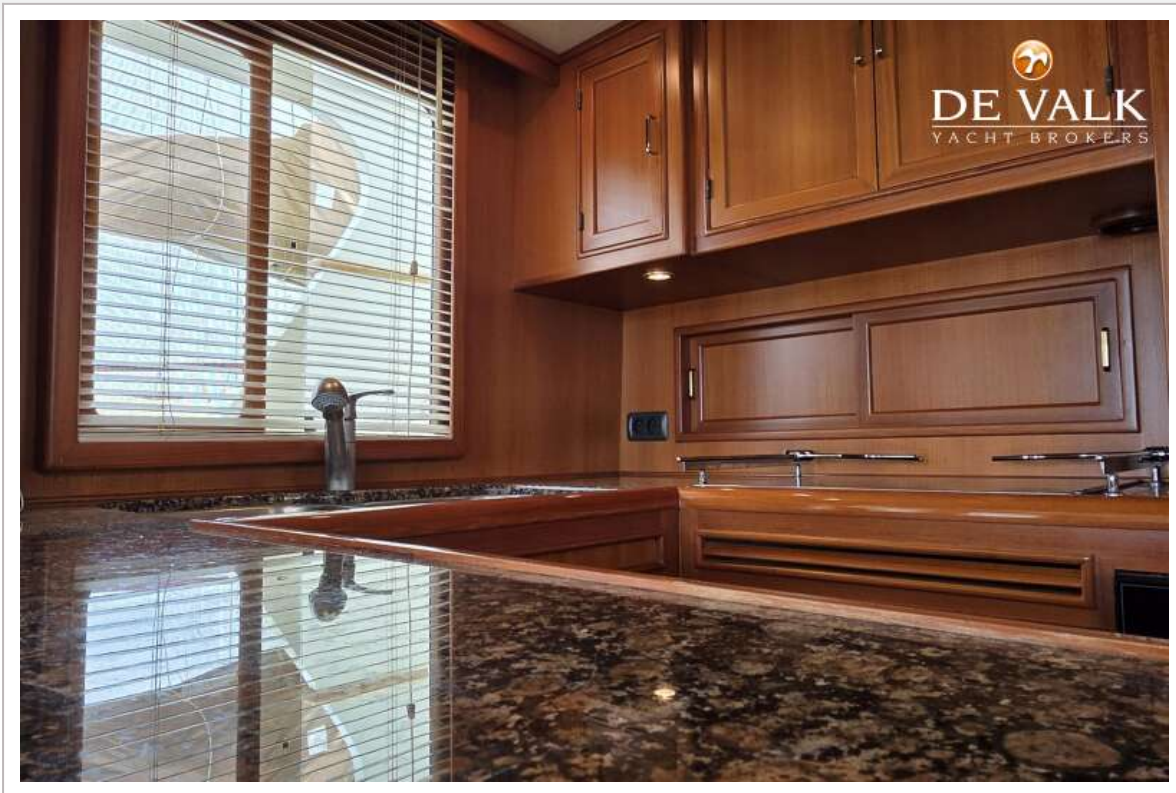
FLEMING 55



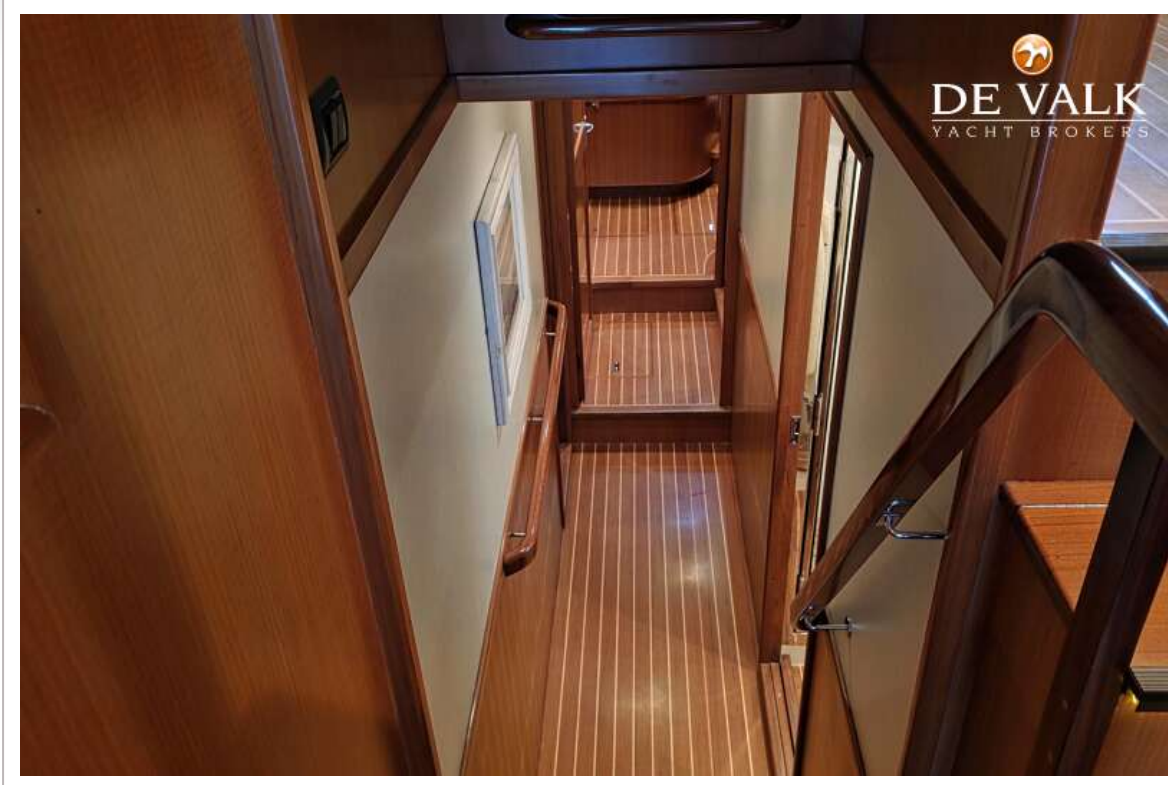
FLEMING 55



FLEMING 55



FLEMING 55



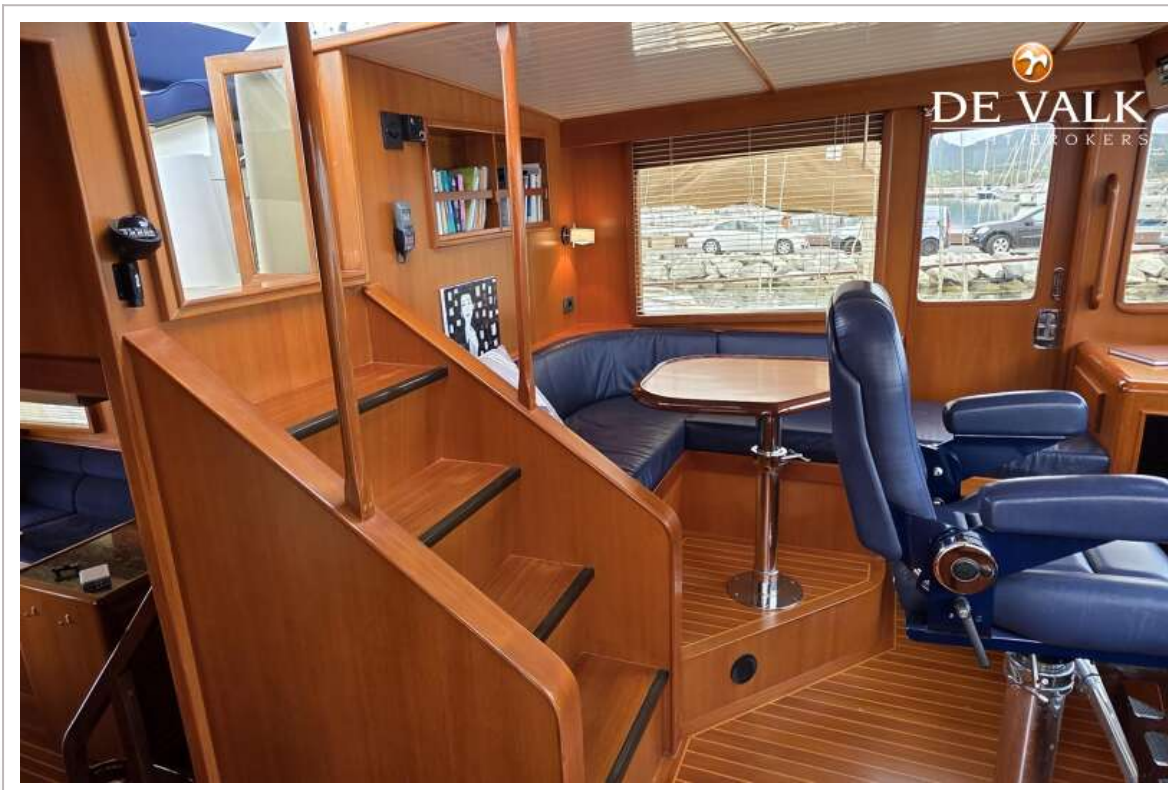
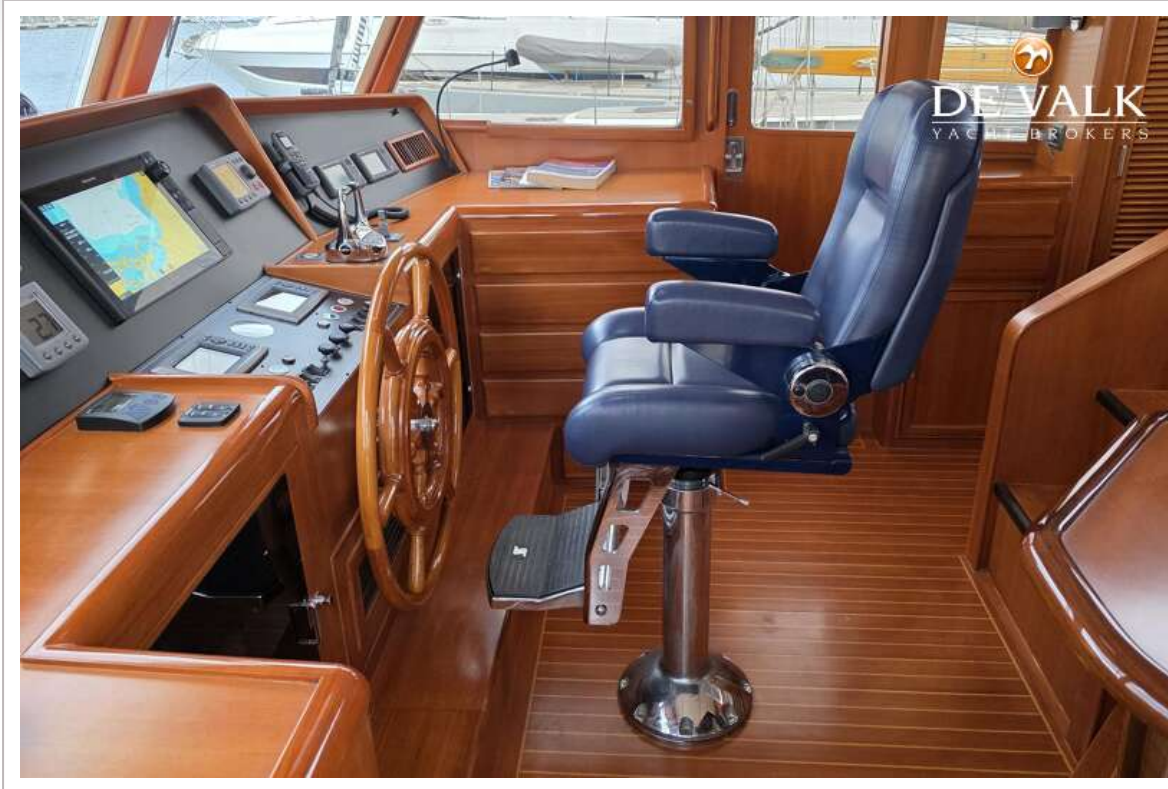
FLEMING 55



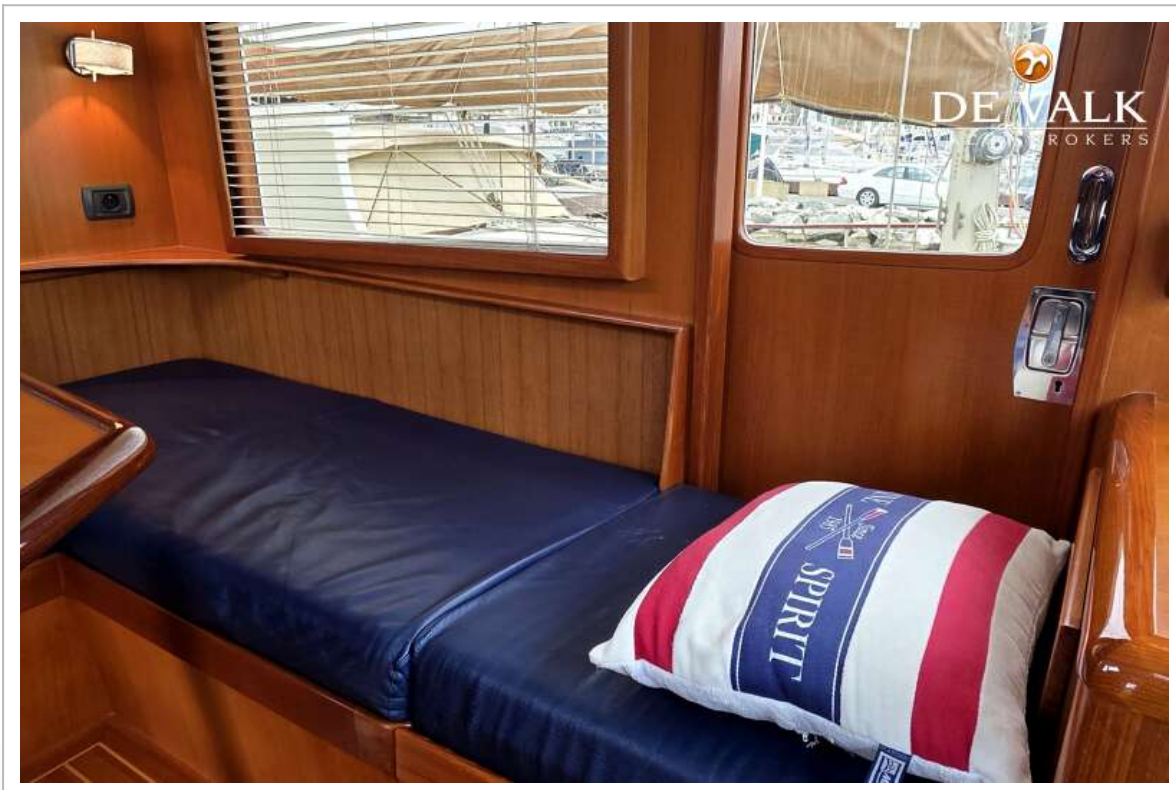
FLEMING 55



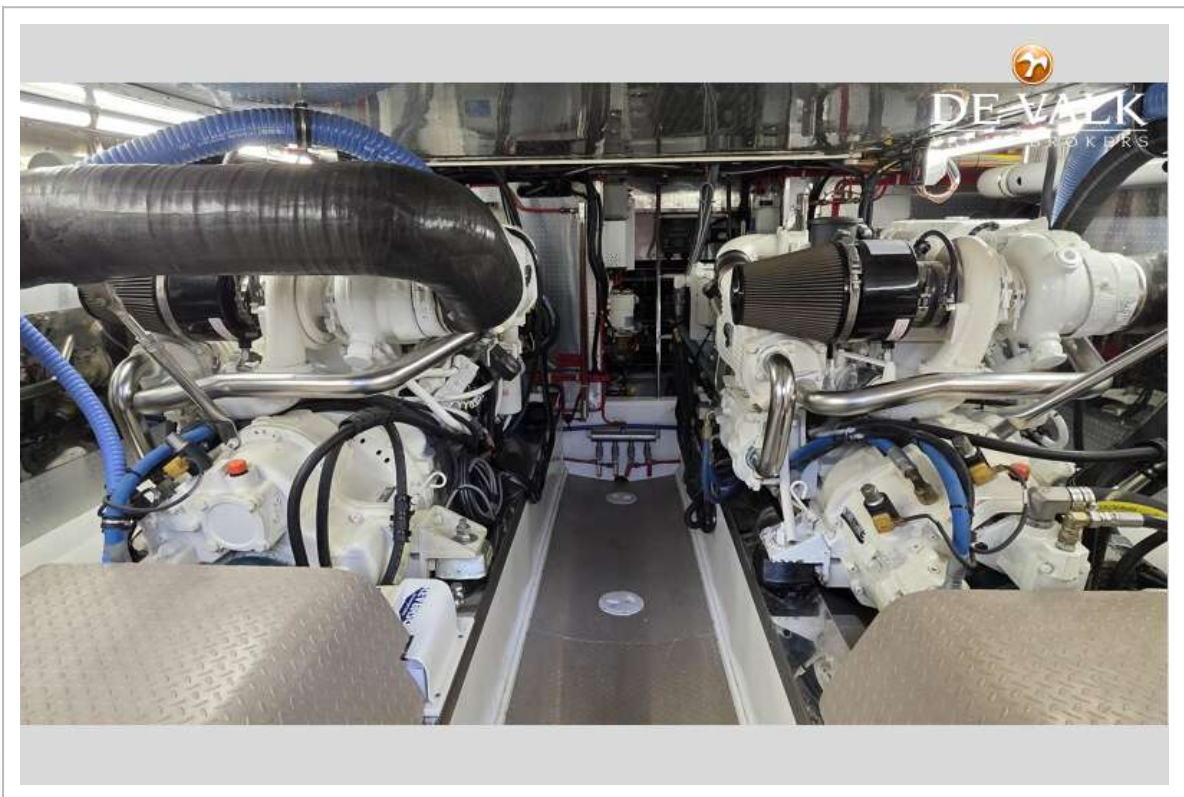
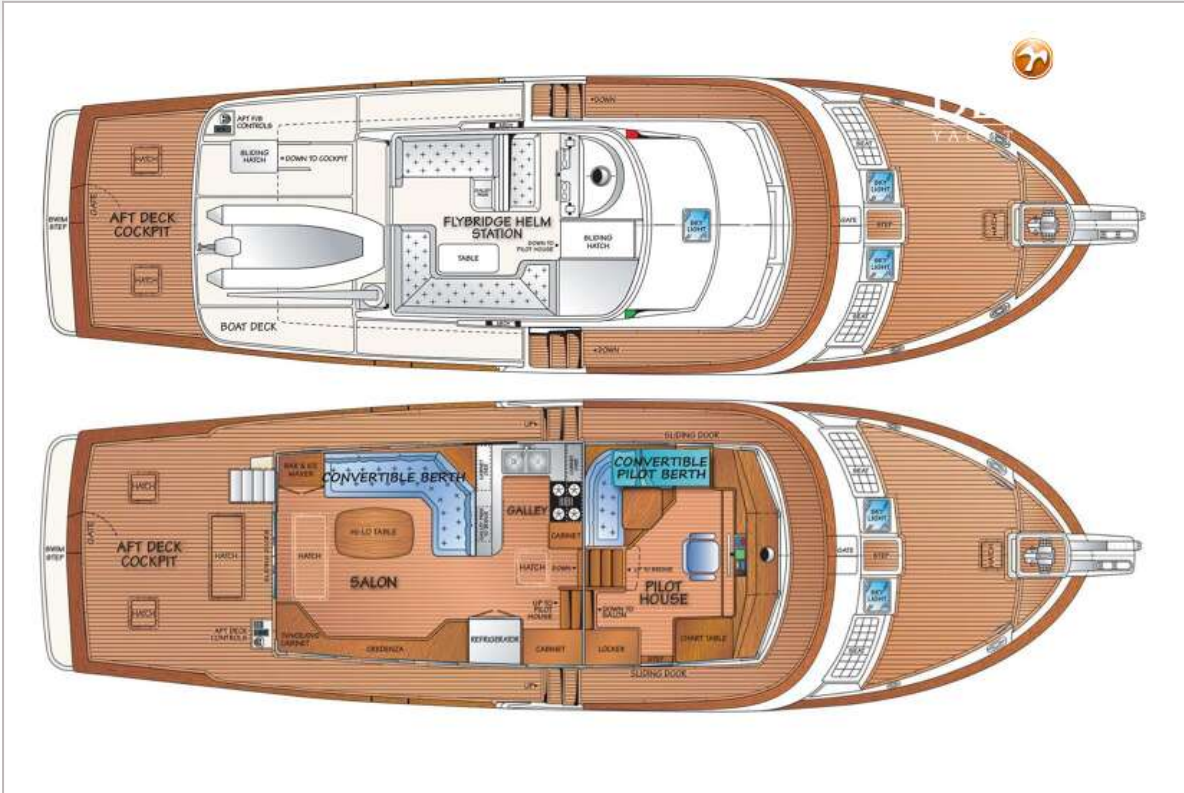
FLEMING 55



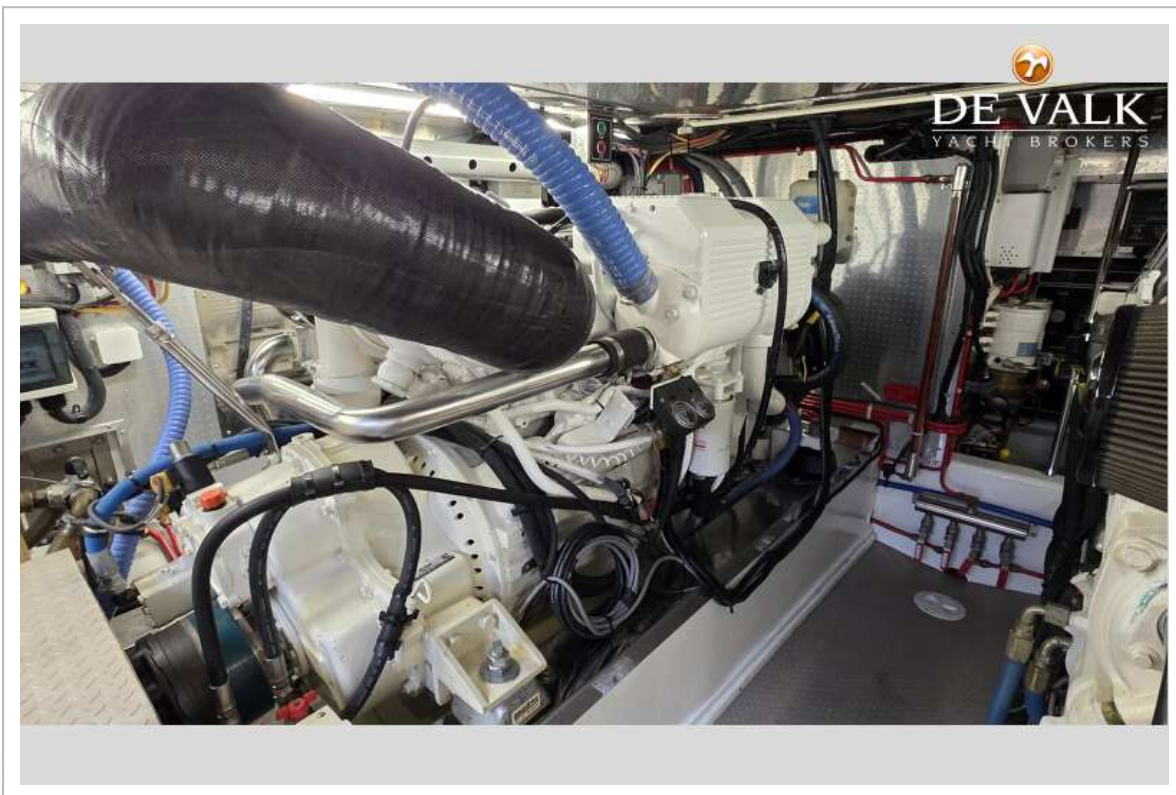
FLEMING 55



FLEMING 55



FLEMING 55



FLEMING 55

