



PILOT 44

BROKER'S COMMENTS

Meet the Pilot 44 "SLUYSWERK". This Pilot will be sold by its 2nd owner who owns this sturdy ship since 2000 which was built by VDL Shipyards to a design by Willem Nieland. Due to its dimensions and the CE-B certification this Pilot 44 is extremely suitable for navigating both coastal and inland waters as even the French canals. SLUYSWERK is easy to maneuver due to its bow and stern thruster. Due to the spacious layout and extensive equipment such as the built-in generator, central heating and air conditioning systems, this Pilot 44 offers enough comfort for a long-term stay on board.

Arjen Hoeksma

SPECIFICATIONS

Dimensions	13.70 x 4.00 x 1.40 (m)	Builder	VDL Shipyards
Built	1998	Cabins	2
Material	Steel	Berths	4
Engine(s)	1 x Iveco 8061 M12	Hp/Kw	121.00 (hp), 88.80 (kw)
Asking price	sold (VAT)	Lying	at sales office

CONTACT

Sales office	De Valk Loosdrecht B.V.	Telephone	+31 (0)35 582 90 30
Address	't Breukeleveense Meentje 6 1231LM Loosdrecht / Wijdmeren NL	E-mail	loosdrecht@devalk.nl

DISCLAIMER

These particulars are given in good faith as supplied but cannot be guaranteed.



GENERAL

Model	PILOT 44
Type	motor yacht
LOA (m)	13,70
Beam (m)	4,00
Draft (m)	1,40
Air draft (m)	4,60
Air draft min (m)	3,15
Headroom (m)	2,05
Year built	1998
Launched	10-1998
Builder	VDL Shipyards
Country	The Netherlands
Designer	Willem Nieland
Displacement (t)	20
Ballast (tonnes)	lead in GRP 105 Kg to compensate the generator's weight
CE norm	B
Hull material	steel
Hull colour	black
Hull thickness (mm)	5mm
Hull shape	multi hard chine
Superstructure material	steel
Deck plate thickness (mm)	4mm
Rubbing strake	rubber
Deck material	steel
Deck finish	non-skid paint
Superstructure deck finish	non-skid paint
Window frame	aluminium
Window material	double glazing Gebo Thermic Line
Deckhatch	Mosquito nets
Portholes	aluminium Including rain caps and mosquito nets



Radar arch	collapsible
Fuel tank (litre)	steel 1600L
Level indicator (fuel tank)	yes
Freshwater tank (litre)	steel 900L
Level indicator (freshwater)	yes
Blackwater tank (litre)	steel 350L
Level indicator (blackwater)	yes
Blackwater tank extraction	deck extraction + pump
Wheel steering	hydraulic
Inside helm position	yes
Outside helm position	hydraulic
More info on paintwork	2010 2-components

ACCOMMODATION

Cabins	2
Berths	4
Interior	beech
Floor	anti-slip Plastic stud tiles
Pilot house	yes
Saloon	yes
Headroom saloon (m)	2,1
Heating	central hot water Kabola B12
Heating 2	diesel ducted hot air Myson 500 Kickspace in owners cabin
Air-conditioning	reverse cycle airco Webasto Blue Cool 19.500 BTU 2006 installed
Opening door to cockpit	yes
Galley	yes
Countertop	
Sink	stainless steel
Cooker	induction Siemens, 4 burners (one burner defect)
Extractor	yes



Microwave/oven combi	Whirlpool AVM687
Fridge	Electrolux RM 4400 with freezer compartment
Hot water system	on central heating
Water pressure system	electrical Hydrofoor
Coffee maker	Princess / Nespresso
Owners cabin	v-bed
Bed length (m)	2m
Wardrobe	hanging and shelves
Bathroom	en suite
Toilet	en suite
Toilet system	electric
Wash basin	in the bathroom
Shower	en suite
Extra info	Built-in safe
Guest cabin 1	double bed
Bed length (m)	2m
Toilet	en suite
Toilet system	manual
Wash basin	at the toilet
Extra info	Smoke detector
Washing machine/dryer combi	Bauknecht WT 9840 (defect) connection supply and drainage present

MACHINERY

No of engines	1
Make	Iveco
Type	8061 M12
HP	121
kW	88,80
Year installed	1998
Cruising speed (kn)	9



Engine hours	2115
Engine cooling system	freshwater heat exchanger
Drive	shaft
Engine controls	bowden cable
Gearbox	hydraulic Technodrive 170-2,6:1
Bowthruster	electric Kalkman 8pk
Sternthruster	electric Vetus 95kgf
Gearbox	hydraulic Scatra Aquadrive
Thrust bearing	Scatra Aquadrive 20300
Propeller type	fixed 25"
Propeller blades	4
Shaft lubrication	water
Manual bilge pump	In engine room 40L/min
Electric bilge pump	Front cabin and engine room
Bilge alarm	yes
Electrical installation	12/24/220V
Generator	JF Marine Power S3L2 10 kVa, 45,5Amp
Start battery	12V
Service battery	12V
Electric engine battery	Outboard engine 12V
Generator battery	12V
Bowthruster battery	24V
Sternthruster battery	24V
Battery monitor	yes
Battery charger	Mastervolt Mass 24/50
Inverter	Mastervolt Mass 24/2500
Shorepower	with cable
Extra info	Engine room covered with sound-absorbing paneling Exalto Hollex
Extra info	yes

NAVIGATION



Electric compass	Simrad Robertson IS11
Depth sounder/log	Simrad Robertson IS11
Windset	Vetus MHWSD833 (Defect)
VHF	Shipmate RS8300 BV
Autopilot	Simrad AP20
Rudder angle indicator	Simrad
Radar	Raymarine SL72 2,2kW 7"
GPS	Furuno GP32 FUR3461-1860
Plotter/GPS	PC with touchscreen
Navtex	Furuno NX-300-Dual
Personal computer	Windows XP boat computer, Freetechnics, with navigation
Electronic chart(s)	Stentec
Camera	Rearview camera including stainless steel lens hood and monitor
Navigation lights	yes
Searchlight	yes
Loudhailer	yes
Extra info	Plastimo weather station

EQUIPMENT

Bimini	Aft deck
Window cover	yes
Cockpit cushions	Seat and back cushion bench aft deck
Cockpit table	Attachable to outside helm position
Bathing platform	yes
Boarding ladder	stainless steel
Gangway	yes
Anchor	Rocna Galvanized 25Kg
Anchor chain	30m
Anchor 2	CQR Plough 25Kg in storage room
Windlass	electrical Remote controlled
Deck wash	yes



Dinghy	inflatable
Outboard	Electric
Sea railing	stainless steel
Grab rail (superstructure)	stainless steel
Railing side opening gates	yes
Lifebuoy	2x aft deck
Wiper	3x
Horn	
Radar reflector	yes
Fenders	yes
Mooring lines	yes
Spare parts	Extensive range of spare parts
Tools	yes
TV	19" Salora
TV receiver	Digitenne
Radio	Built in GIRA RDS Radio in pilot house
Radio-cd player	JVC UX 1500R
Speakers in salon	2x JVC
Clock - barometer	Schatz
Extra info	SMS notifier, built-in GSM module calls and sends an message to
Extra info	Up to 5 phone numbers and detects: bilge water, shorepower
Extra info	Exceeding set limits battery voltage, pilothouse temperature









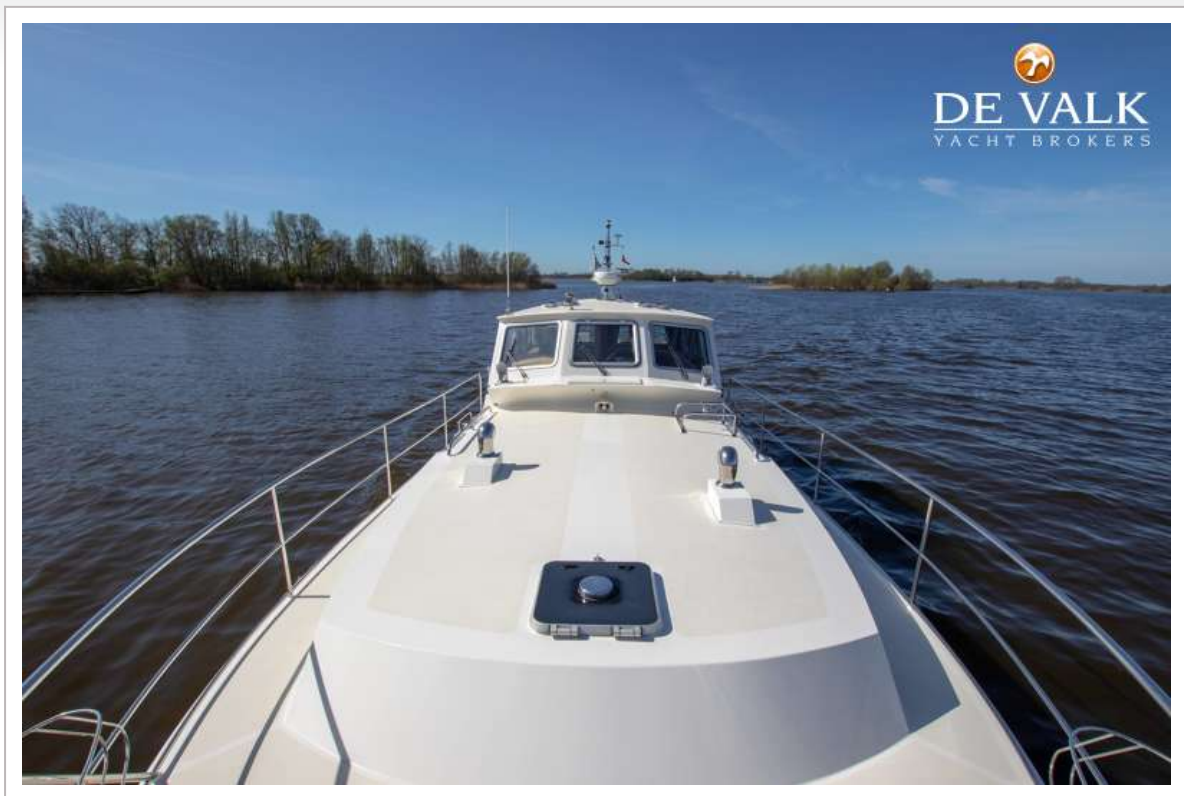


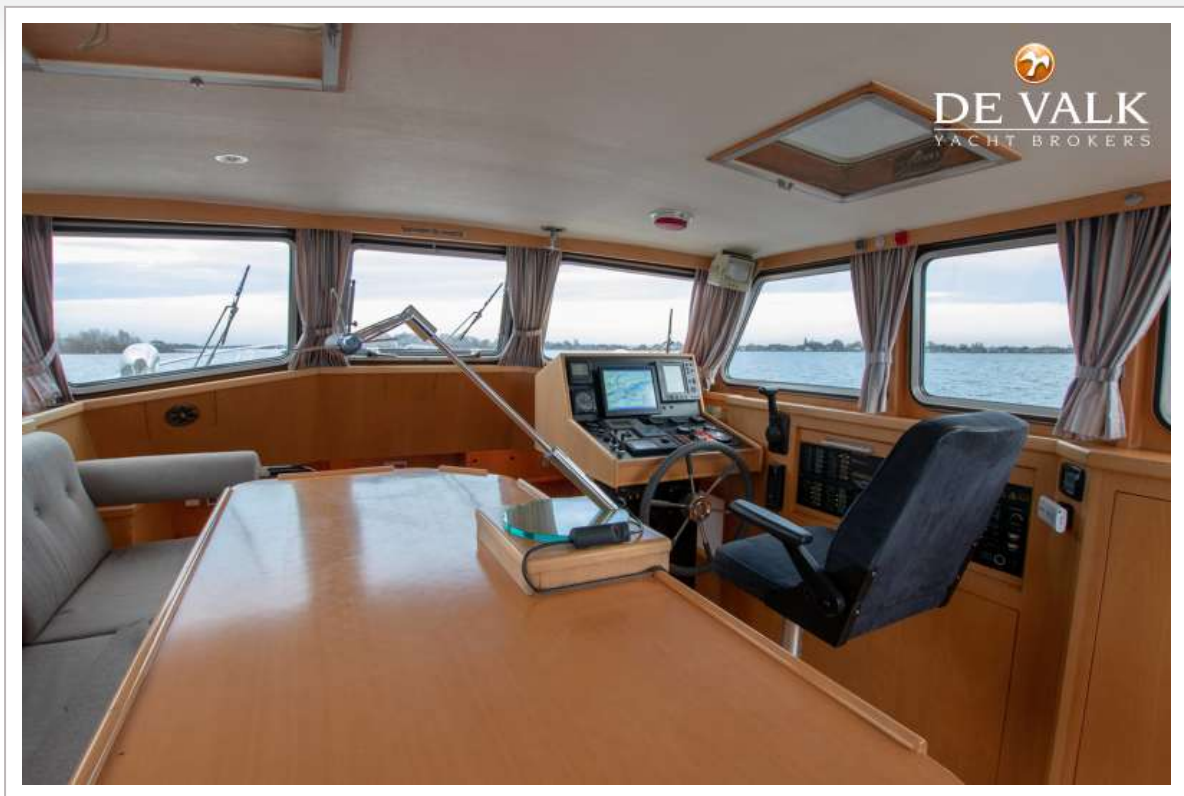


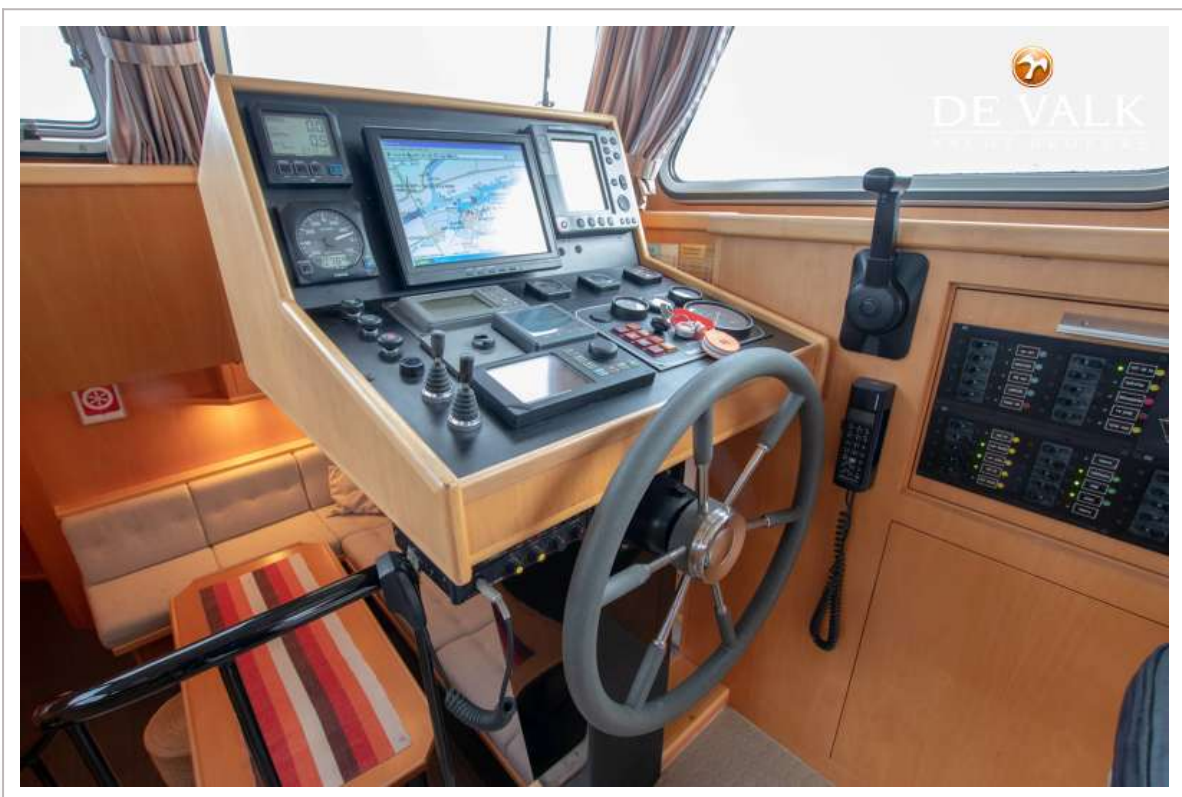


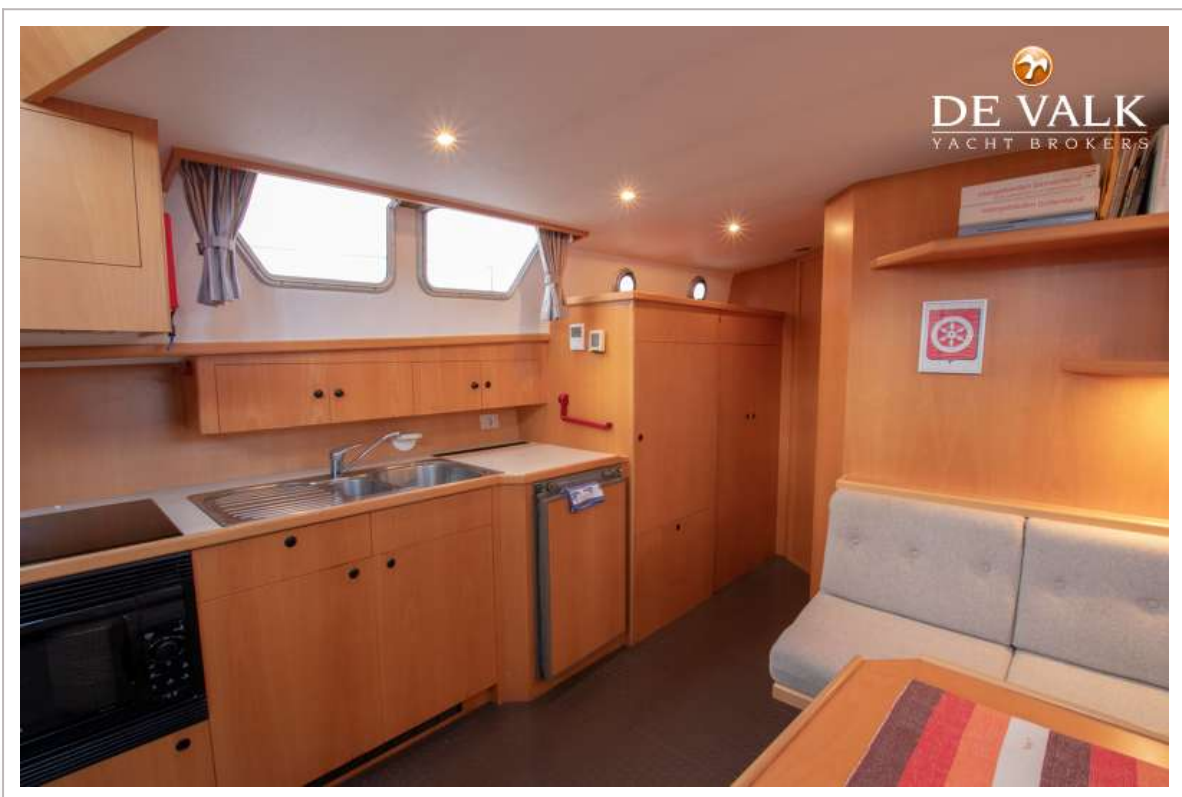




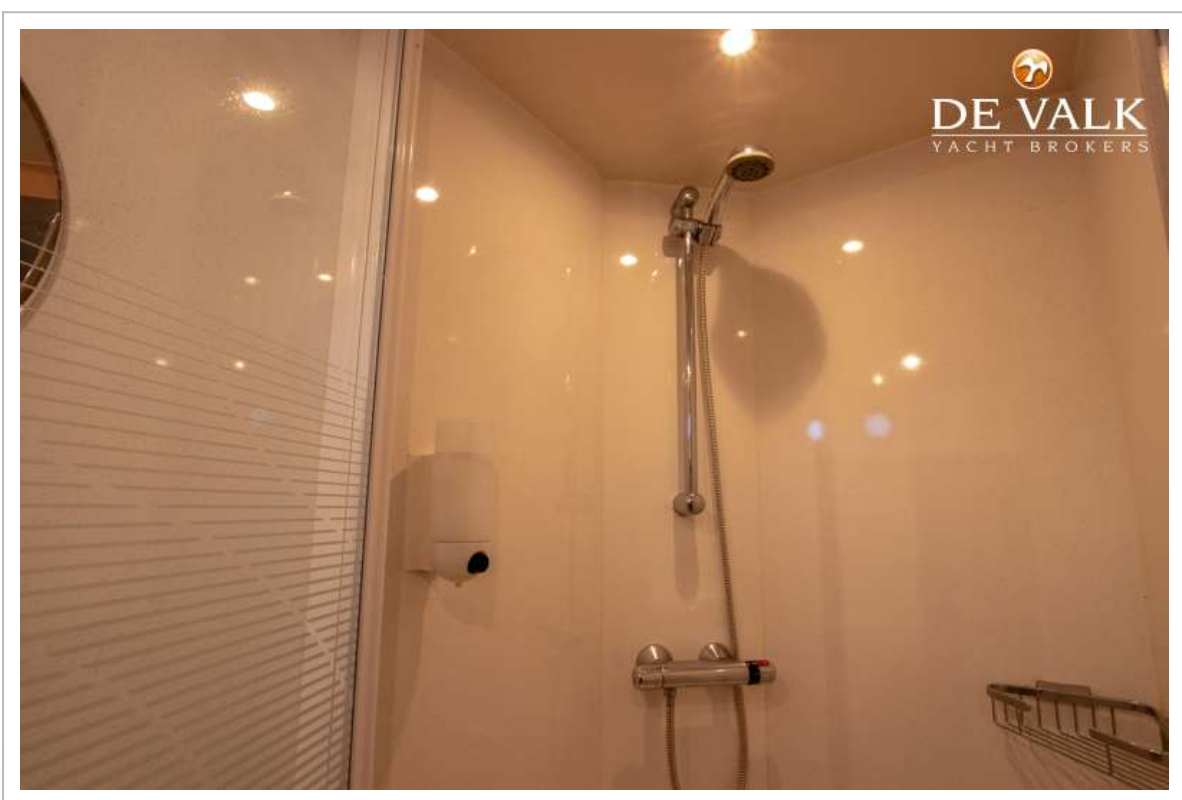














PILOT 44

