



DE VALK
YACHT BROKERS



PILOT 50 ALUMINIUM



DE VALK
YACHT BROKERS

PILOT 50 ALUMINIUM

BROKER'S COMMENTS

Truly inspired by the appreciated coastal pilotboats young designer Willem Nieland stormed the Dutch yacht building scene and gained instant recognition with his line of Pilot Yachts. The 50 footer is the top model of the range and has been exploring the European coastal and inland waterways. The aluminium Pilot 50 trumps the steel version in performance, range, durability and easy maintenance. Carefully and professionally maintained by her second owner from new. We kindly invite you to come onboard and get inspired and start planning your next voyage, exploring other horizons.

Mark Hesselmans

SPECIFICATIONS

Dimensions	14.90 x 4.85 x 1.40 (m)	Builder	VDL Shipyard
Built	2000	Cabins	3
Material	Aluminium	Berths	6
Engine(s)	2 x Volvo Penta TAMD71B diesel	Hp/Kw	2 x 375.00 (hp), 275.63 (kw)
Asking price	€ 398.000 (VAT Paid)	Lying	at sales office

CONTACT

Sales office	De Valk Loosdrecht B.V.	Telephone	+31 (0)35 582 90 30
Address	't Breukeleveense Meentje 6 1231LM Loosdrecht / Wijdmeren NL	E-mail	loosdrecht@devalk.nl

DISCLAIMER

These particulars are given in good faith as supplied but cannot be guaranteed.



PILOT 50 ALUMINIUM

GENERAL

Model	PILOT 50 ALUMINIUM
Type	motor yacht
LOA (m)	14,90
Beam (m)	4,85
Draft (m)	1,40
Air draft (m)	3,45
Headroom (m)	1,95
Year built	2000
Launched	2002
Builder	VDL Shipyard
Country	The Netherlands
Designer	Willem Nieland
Displacement (t)	18
CE norm	B
Hull material	aluminium
Hull colour	blue
Hull thickness (mm)	5
Hull shape	Fast Displacement Hull
Superstructure material	aluminium
Superstructure (mm)	5
Deck plate thickness (mm)	5
Rubbing strake	fender rope
Deck material	aluminium
Deck finish	non-skid paint
Superstructure deck finish	non-skid paint
Cockpit deck finish	non-skid paint
Antifouling (year)	2023
Dorades	3 x
Window frame	aluminium
Window material	double glazing



PILOT 50 ALUMINIUM

Deckhatch	yes
Portholes	yes
Insulation	foam
Mast can be lowered	manual
Fuel tank (litre)	stainless steel 1 x 3500
Level indicator (fuel tank)	yes
Freshwater tank (litre)	stainless steel 2 x 750
Level indicator (freshwater)	yes
Blackwater tank (litre)	stainless steel 1 x 750
Blackwater tank extraction	deck extraction + pump
Wheel steering	hydraulic

ACCOMMODATION

Cabins	3
Berths	6
Interior	cherry
Floor	teak and holly
Open cockpit	yes
Pilot house/deck saloon	with settee, helmposition and full 360 views on the surroundings
Saloon	opposite to the galley
Headroom saloon (m)	1,95 - 1,92
Heating	central hot water Kabola B17
Air-conditioning	single cycle airco 3 units; forward, midships and aft
Dinette	L-shaped with separate comfy chair
Opening door to cockpit	aluminium with double glazing
Galley	yes
Countertop	plastic
Sink	stainless steel 1 x
Cooker	electric Bauknecht 4-burner ceramic (220v)
Extractor	yes



Fridge	fridge with extra freezer compartment and drinks fridge in the decksalon 2 x
Hot water system	on central heating Kabola 80 ltrs
Water pressure system	electrical
Dishwasher	Siemens (2021)
Owners cabin	double bed
Bed length (m)	2,00 x 1,60 mtr, headroom 1,92 mtr
Wardrobe	hanging/drawers/shelves
Bathroom	en suite I
Toilet	en suite
Toilet system	electric
Wash basin	in the bathroom
Shower	separate
Guest cabin 1	double bed
Bed length (m)	2,00 x 1,60 mtr, headroom 1,88 mtr
Wardrobe	hanging/drawers/shelves
Bathroom	en suite II
Toilet	en suite
Toilet system	electric
Wash basin	in the cabin
Shower	en suite
Extra info	yes
Guest cabin 2	bunk bed
Bed length (m)	2 x 2,00 x 0,70 mtr, headroom 1,90 mtr
Wardrobe	drawers
Washing machine	Bauknecht (220v)
Extra info	The interior has been handcrafted in warm Cherry wood with nice but also practical details. Lots of light enters inside via the large double glazed windows, numerous portholes and deckhatches. Ventilation a-plenty and both heating and air-conditioning ensures a comfortable environment.



Extra info

Onboard you will find a tremendous amount of storage to make life onboard easy and comfortable and even larger items can be stored safely.

MACHINERY

No of engines	2
Make	Volvo Penta
Type	TAMD71B
HP	375
kW	275.63
Fuel	diesel
Year installed	2000
Maximum speed (kn)	18
Cruising speed (kn)	10
Engine hours	4860
Engine cooling system	freshwater heat exchanger
Drive	shaft
Shaft seal	Tides Marine
Gearbox	hydraulic Twin-Disc
Engine controls	electrical Micro Commander + Hydronautica full remote
Bowthruster	electric Amer H6 (24v)
Sternthruster	electric Sidepower (24v)
Exhaust	watercooled
Thrust bearing	with heavy duty Cinta flex-couplings
Propeller type	fixed
Propeller blades	2 x 4 x
Propeller shaft material	stainless steel
Shaft lubrication	water
Electric bilge pump	3 x
Bilge alarm	yes
Electrical installation	24v/220v
Generator	silent separator Onan 16kW (in soundproof box)



Running hours generator	2242
Start battery	4 x Whisper AGM (2022)
Service battery	4 x 200ah (2024)
Generator battery	2 x
Battery monitor	Mastervolt system
Battery charger/inverter	Mastervolt 24v/60amp/2500watt
Shorepower	with cable
Insulation transformer	Mastervolt
Trimtabs	Bennet
Extra info	twin Racor filter system plus magnetic filters
Extra info	The engine-room can be accessed via a heavy duty sound-proofing door and two tophatches for more extensive maintenance. Last service may 2023

NAVIGATION

Electric compass	Raymarine i70 (2016)
Depth sounder	Raymarine i70 (2016)
Log	Raymarine i70 (2016)
VHF	2 x Raymarine R63 (2016)
Autopilot	Raymarine p70 + remote (2016)
Rudder angle indicator	via autopilot
Radar	Raymarine R40XX
GPS	Raymarine (2016)
Plotter	Raymarine software (2016)
Navtex	ICS
Electronis chart(s)	via subscription
AIS transceiver	Class B
Navigation lights	yes

EQUIPMENT

Fixed windscreen	yes
------------------	-----

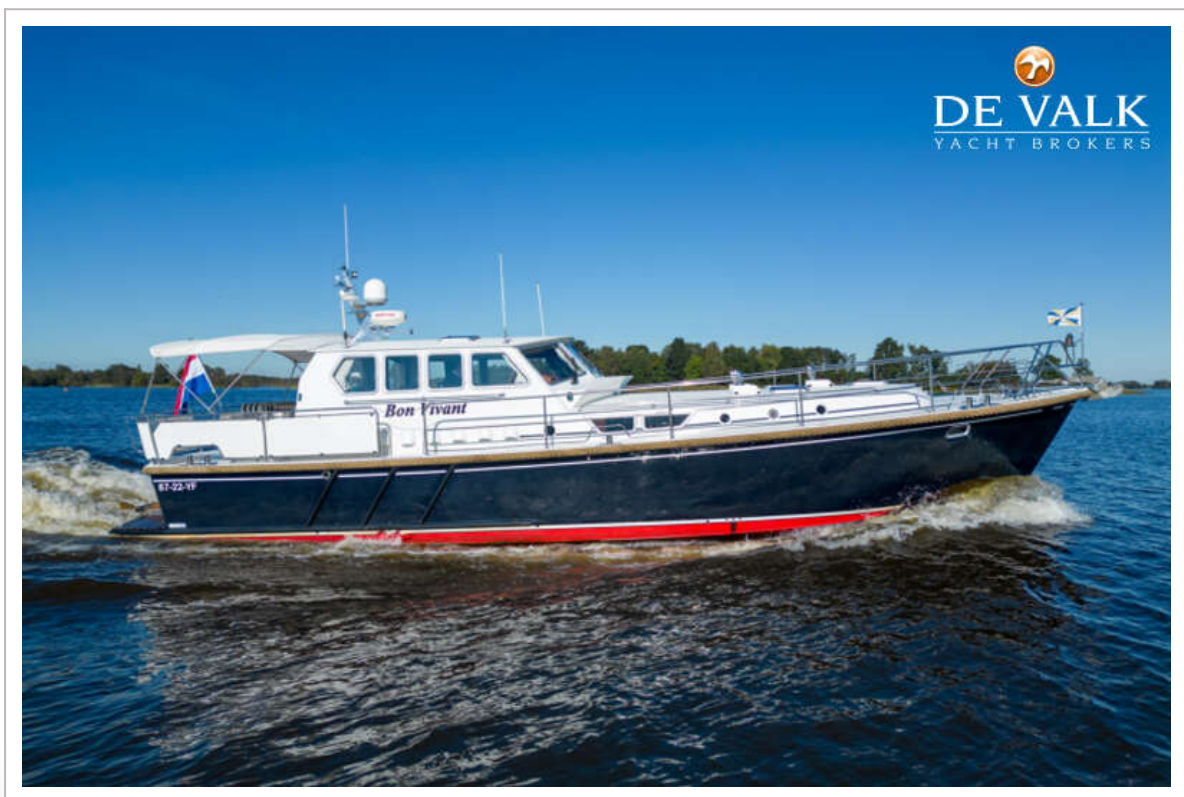


PILOT 50 ALUMINIUM

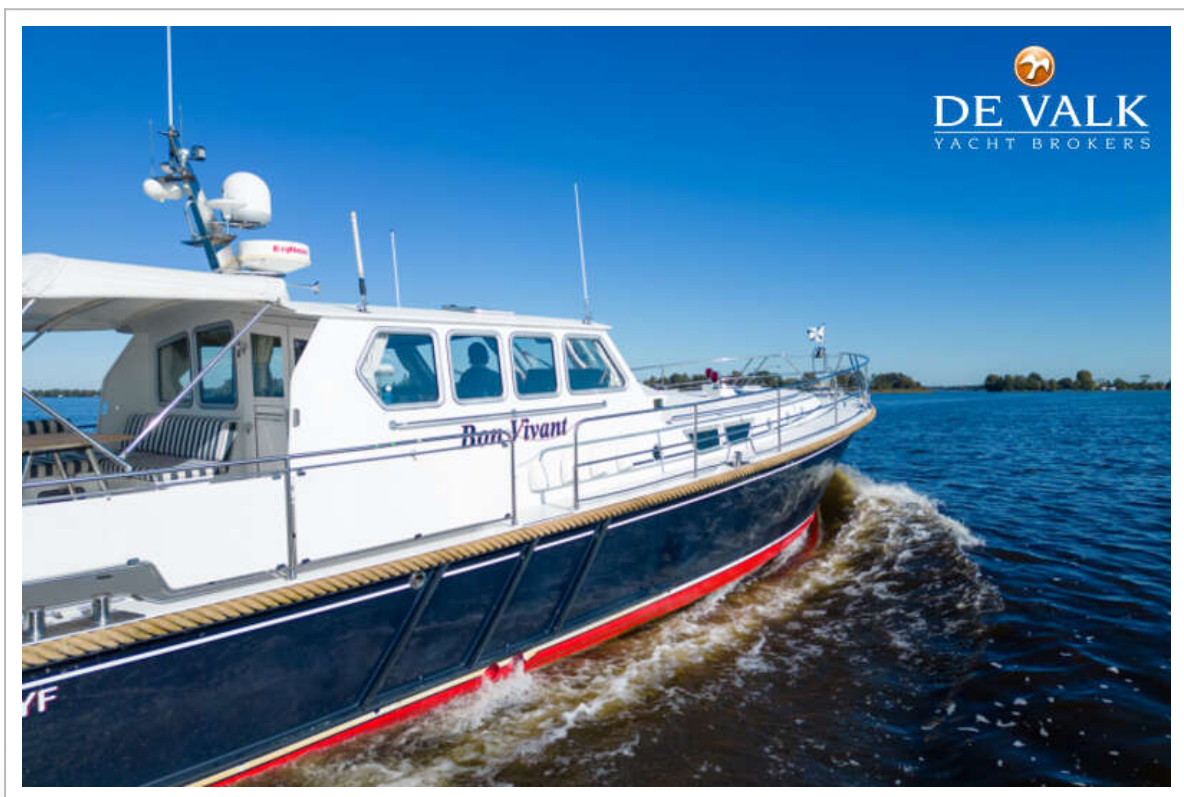
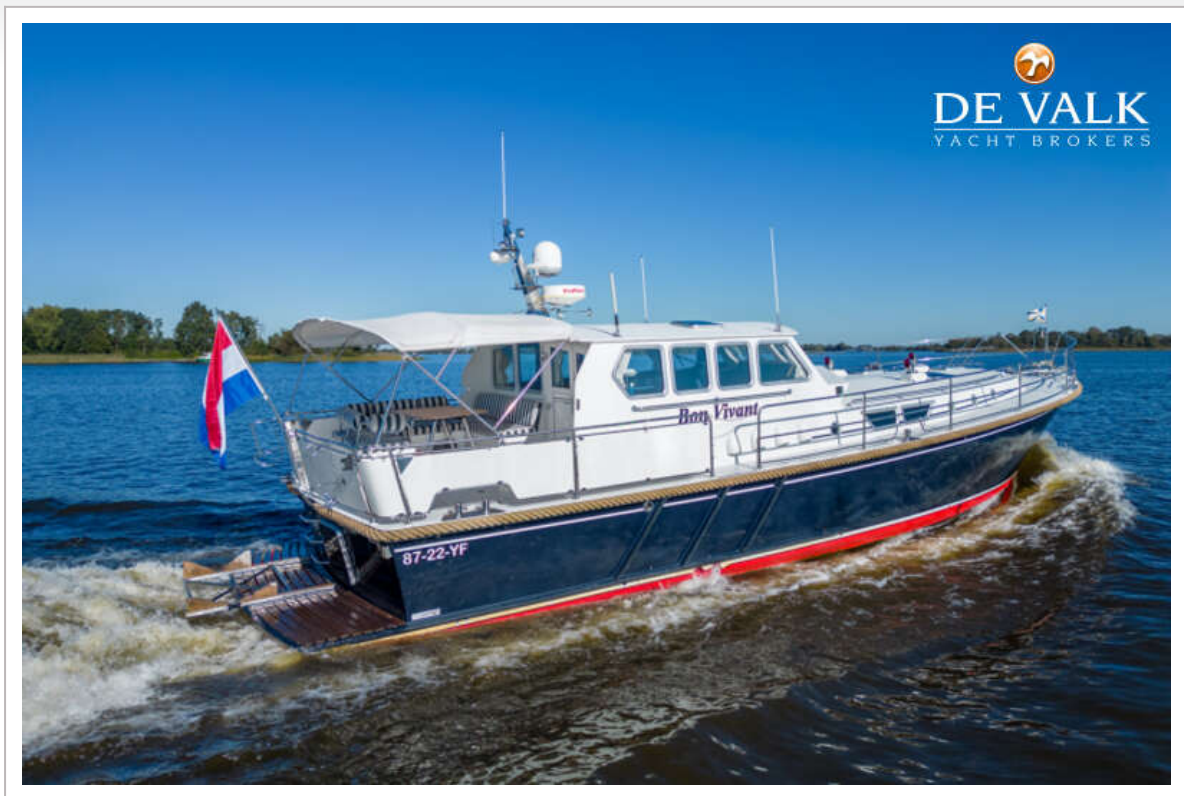
Bimini	including 5 x "zippable" panels to close of the cockpit for wind & weather
Window cover	1 x sunscreen and 1 x full cover
Cockpit cushions	yes
Cockpit table	adjustable in stainless steel and teak
Bathing platform	fitted with "easy to launch" dinghy cradle
Boarding ladder	yes
Deck shower	cold water
Anchor	Delta 25kg (stainless)
Anchor chain	75 mtr
Windlass	electrical Simpson & Lawrence (24v)
Capstan	electrical Simpson & Lawrence (24v)
Deck wash	yes
Sea railing	stainless steel
Grab rail (superstructure)	stainless steel
Railing side opening gates	2 x
Pushpit	stainless steel
Pulpit	stainless steel
Wiper	3 x Exalto with wash
Horn	electric
Radar reflector	Trilens
Fenders	yes
Mooring lines	yes
Spare parts	yes
TV	yes
Radio-cd player	yes
Speakers in salon	yes
Clock - barometer	yes
Fire extinguisher	not serviced
Extinguisher in engine room	automatic, not serviced
Auto extinguisher system	yes



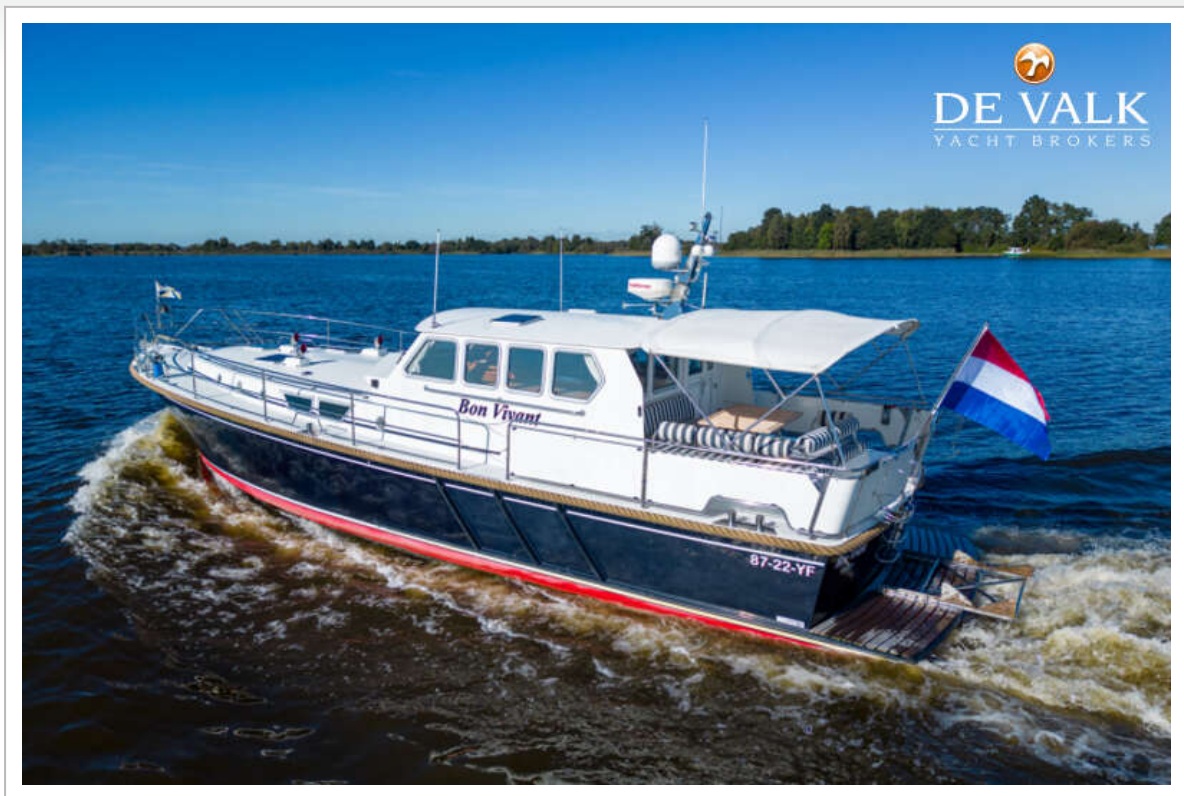
PILOT 50 ALUMINIUM



PILOT 50 ALUMINIUM



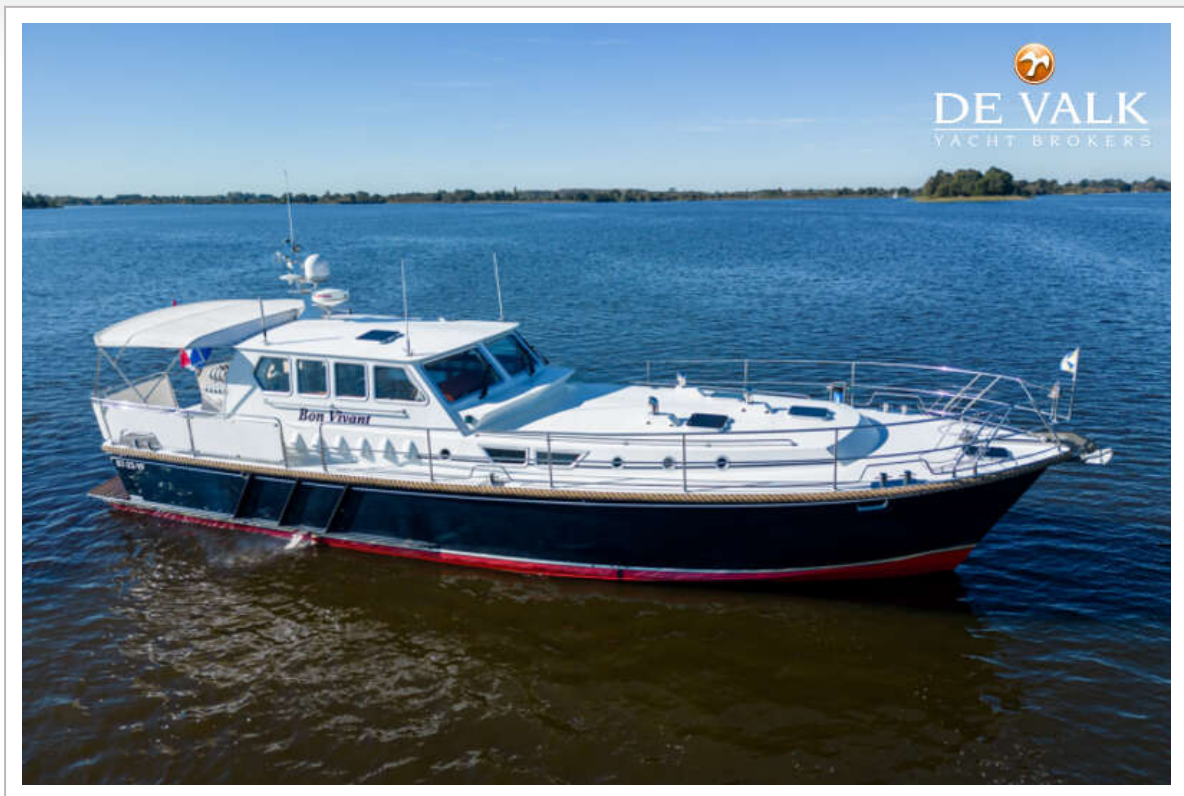
PILOT 50 ALUMINIUM



PILOT 50 ALUMINIUM



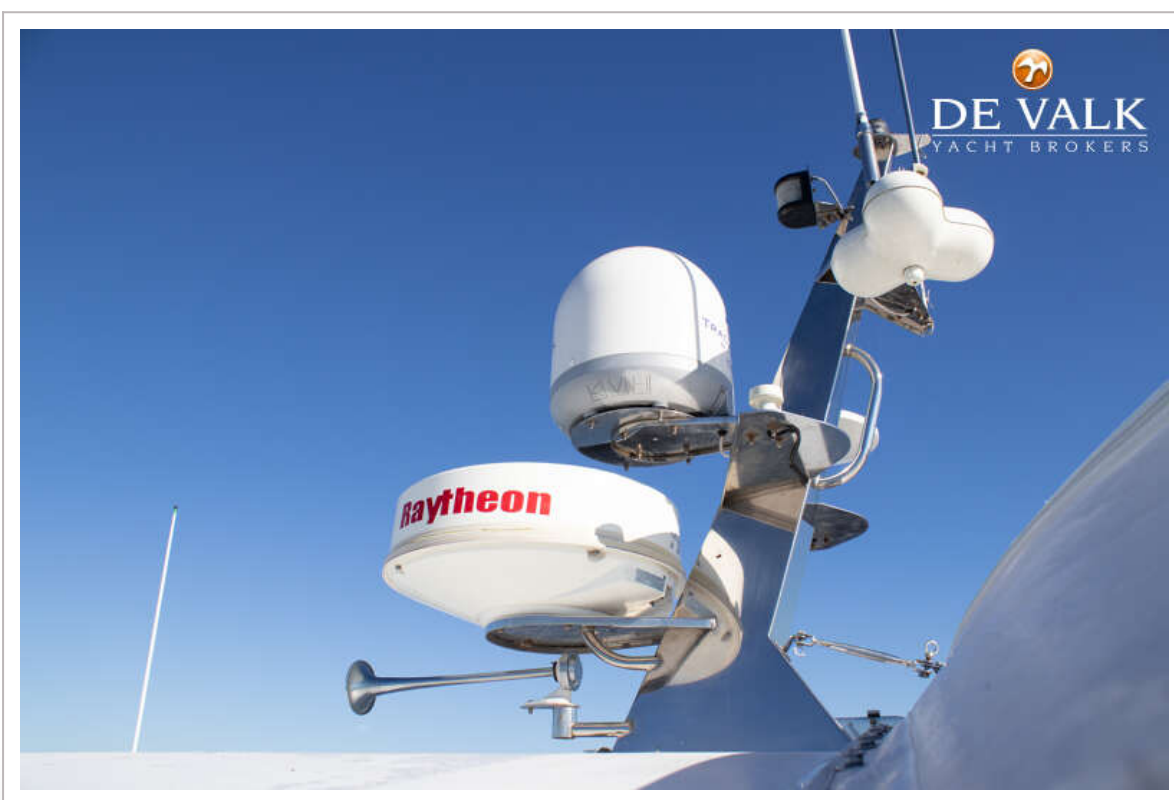
PILOT 50 ALUMINIUM



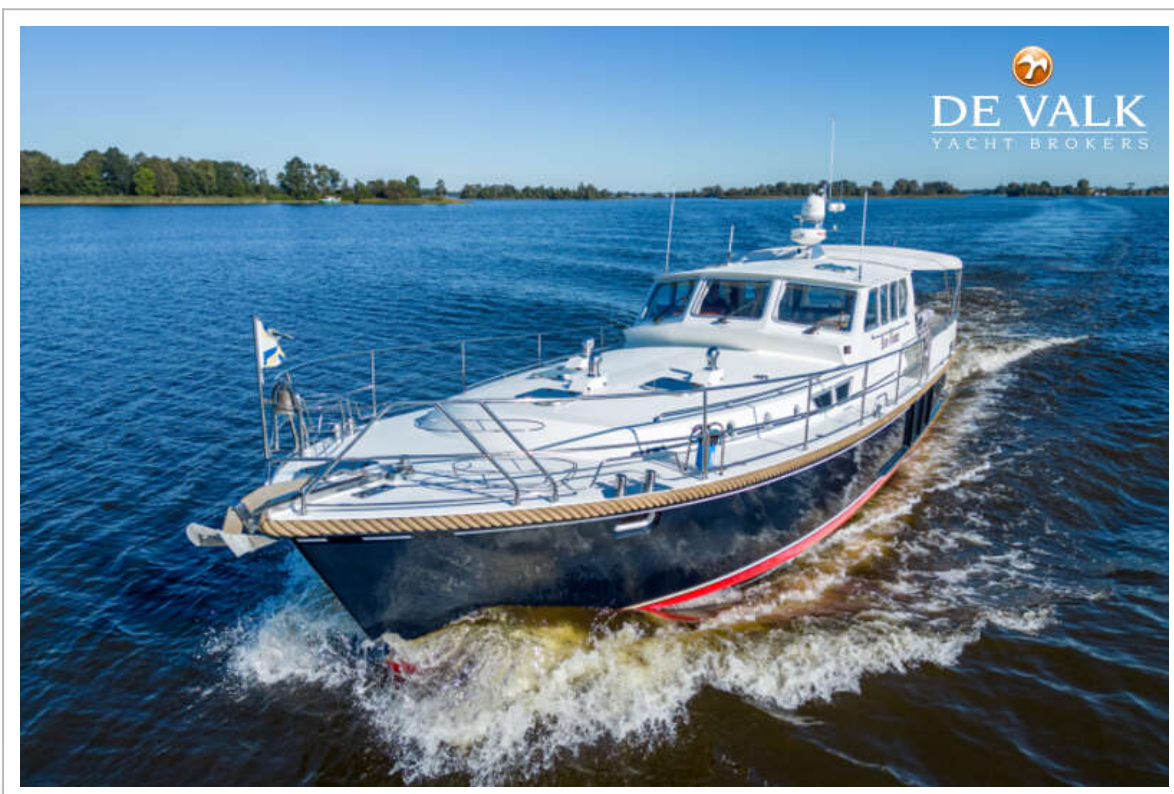
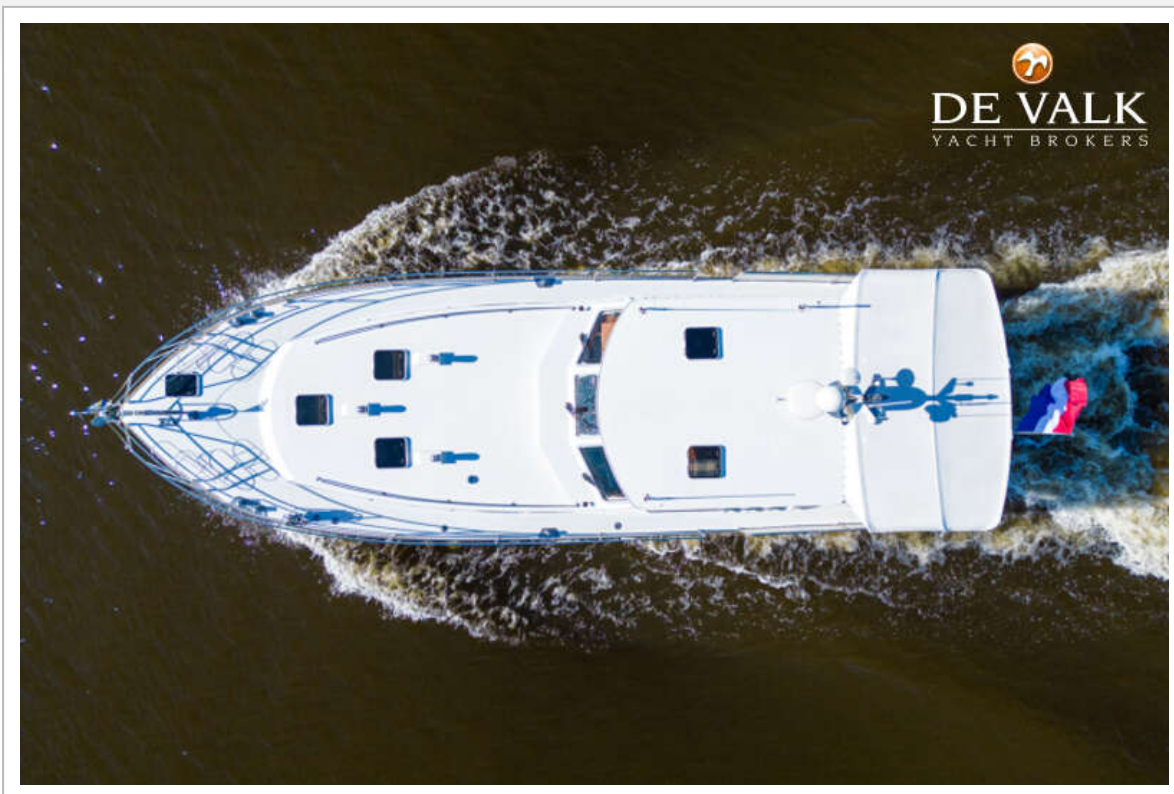
PILOT 50 ALUMINIUM



PILOT 50 ALUMINIUM



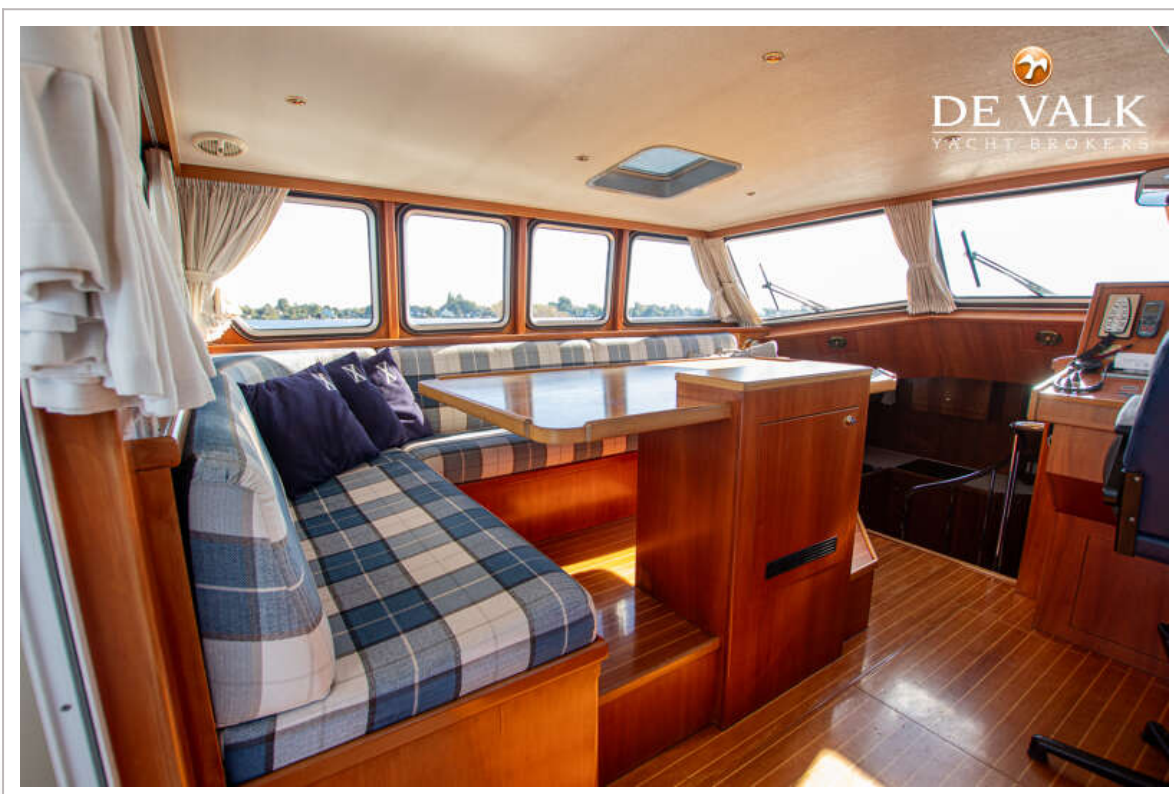
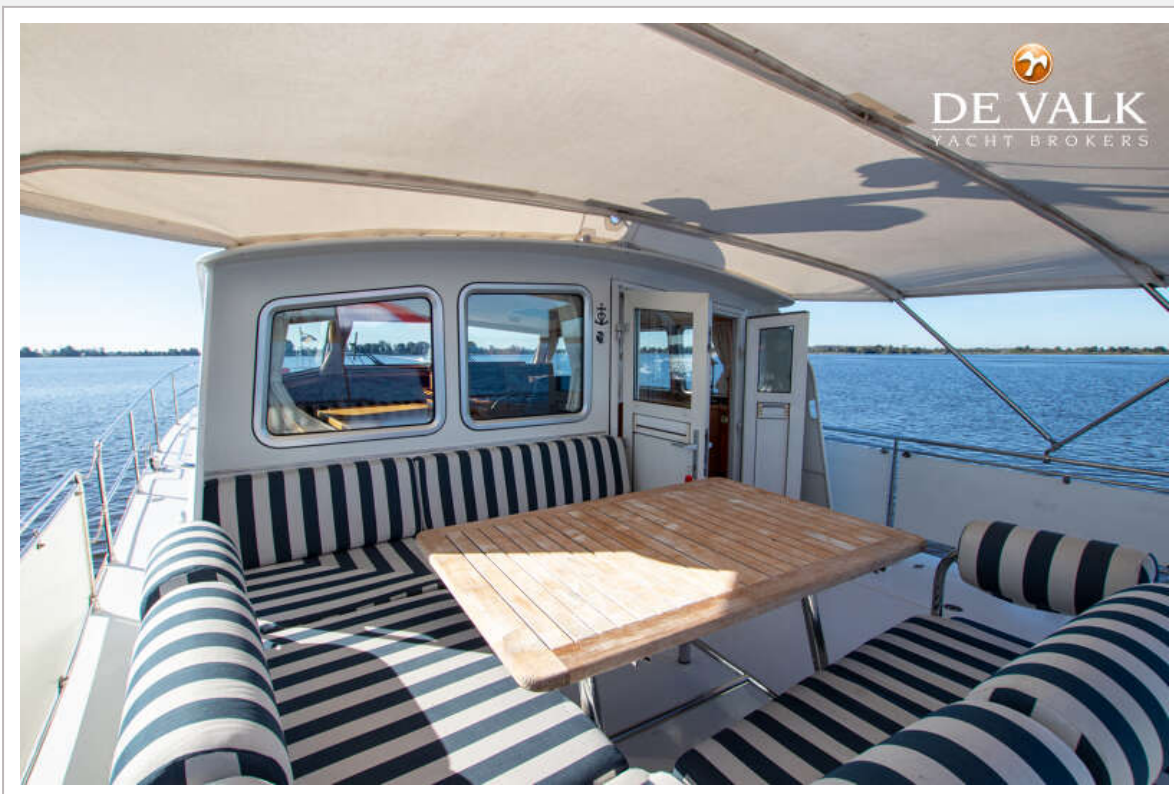
PILOT 50 ALUMINIUM



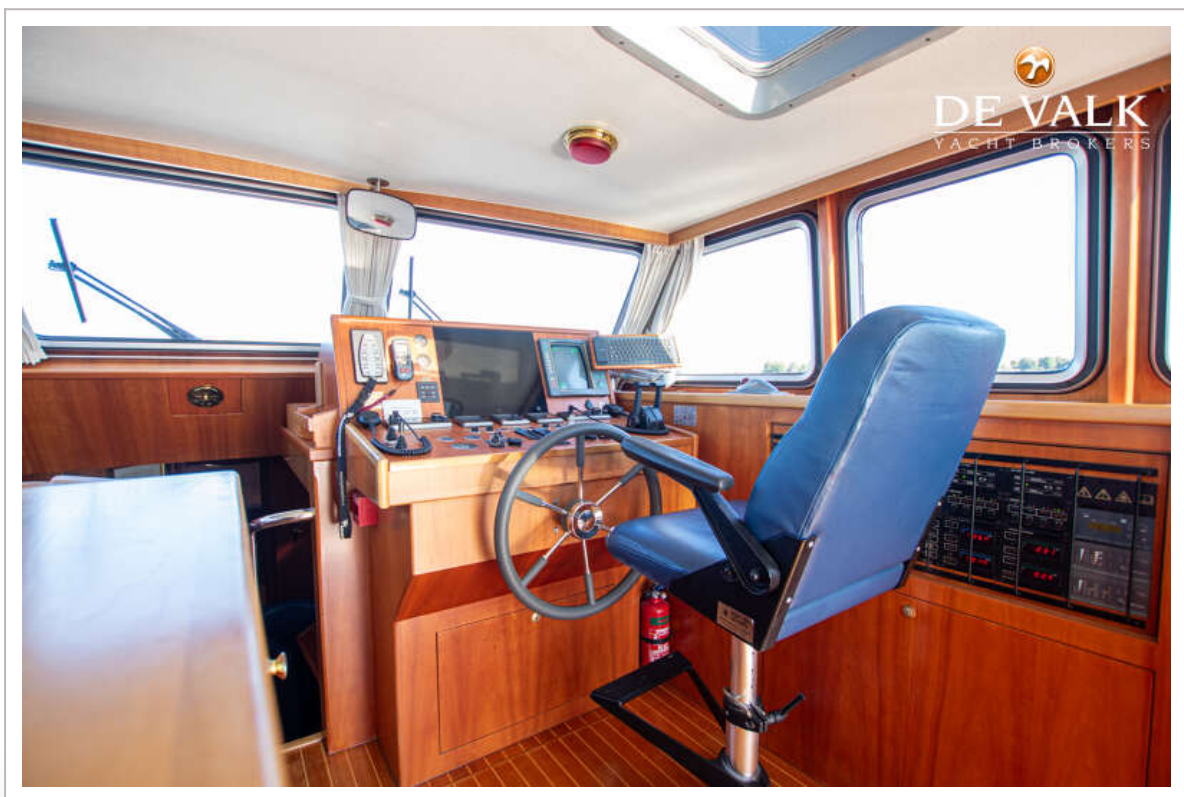
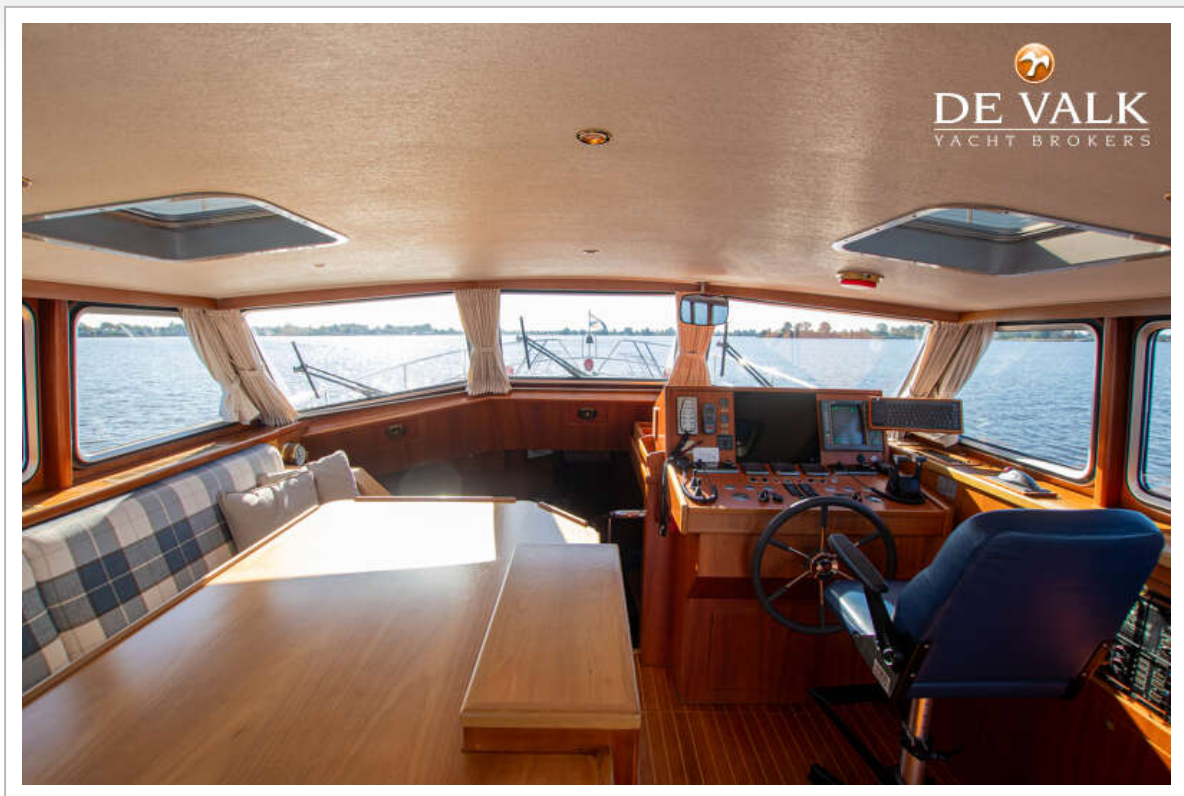
PILOT 50 ALUMINIUM



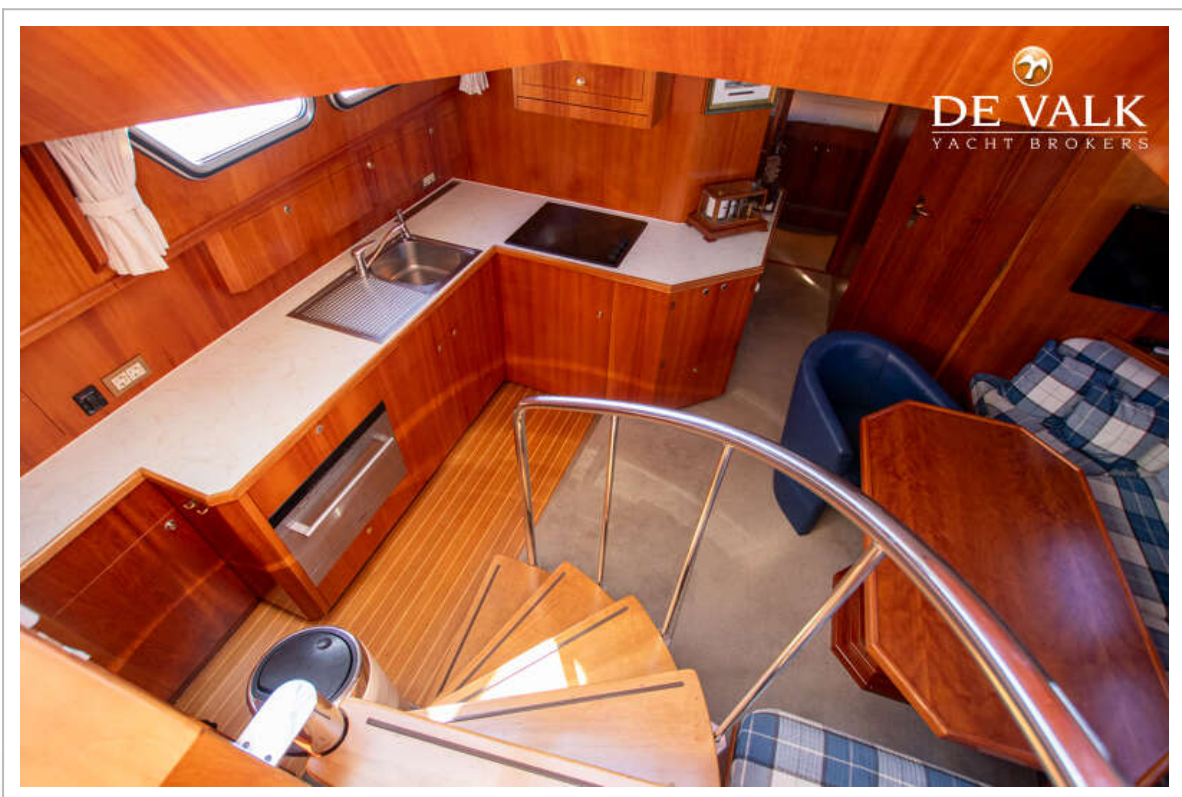
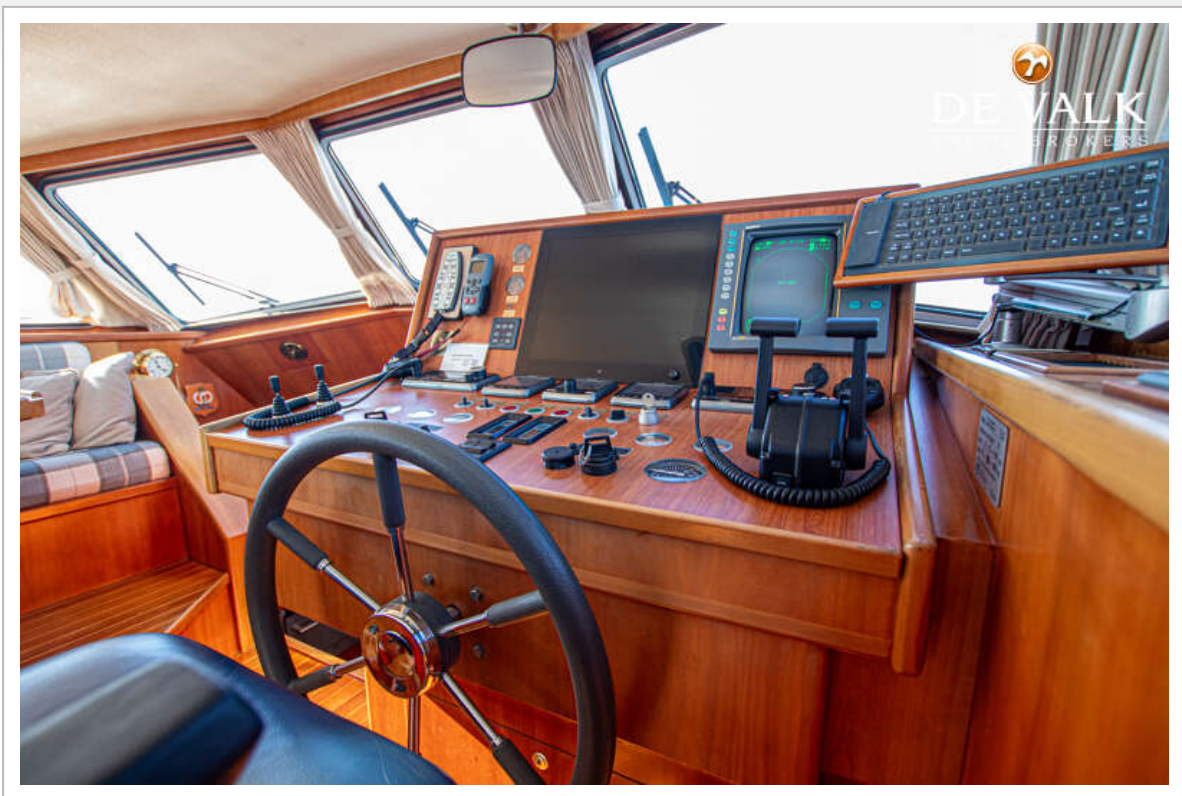
PILOT 50 ALUMINIUM



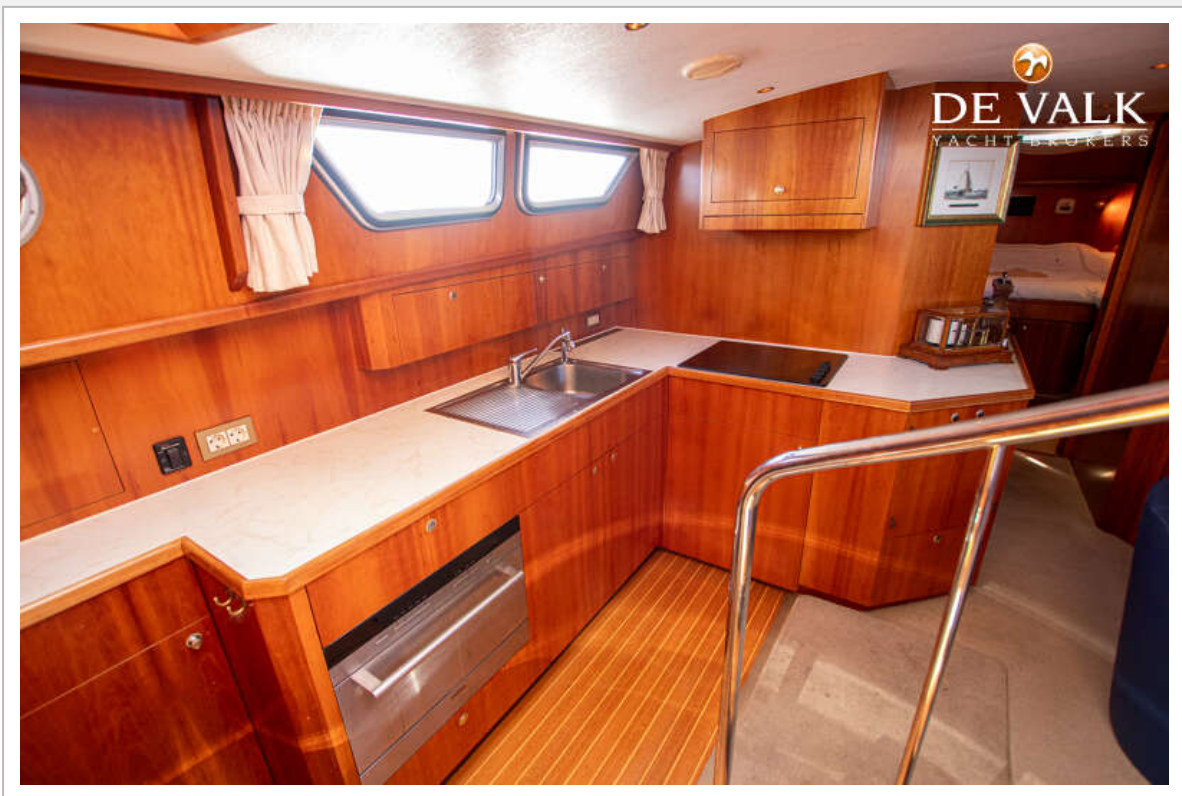
PILOT 50 ALUMINIUM



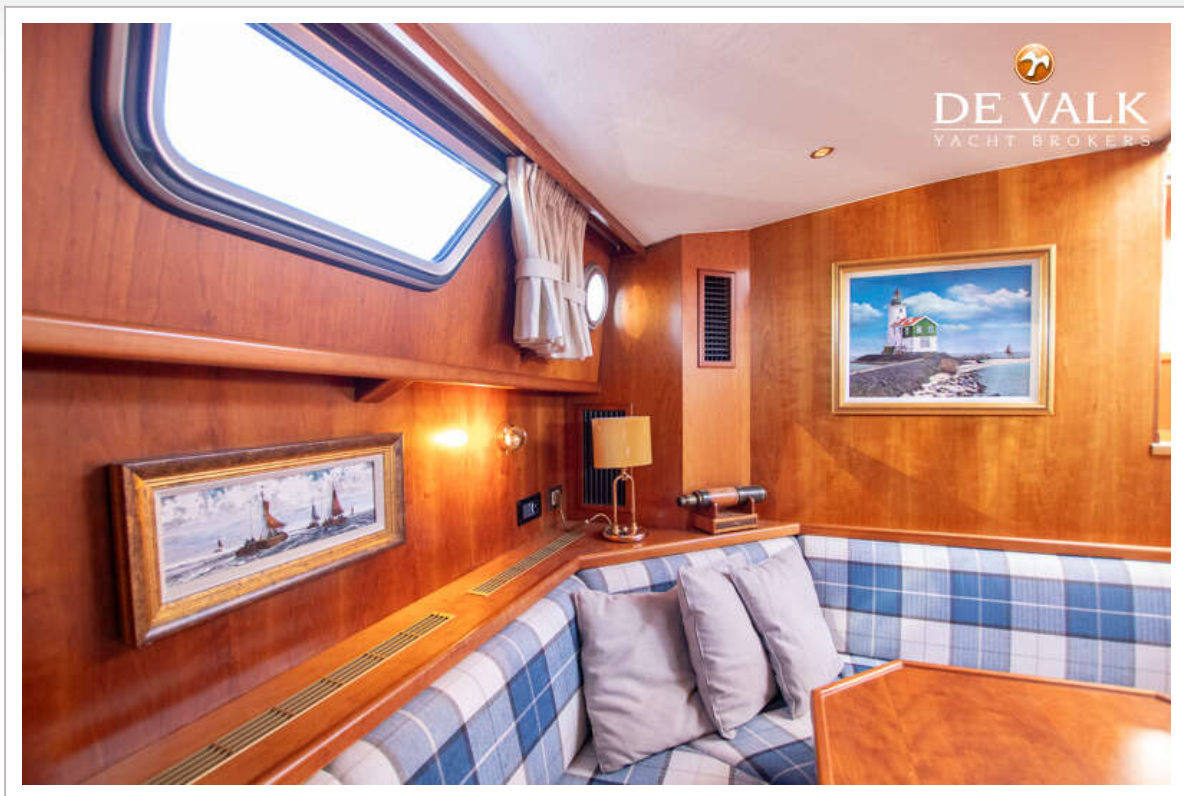
PILOT 50 ALUMINIUM



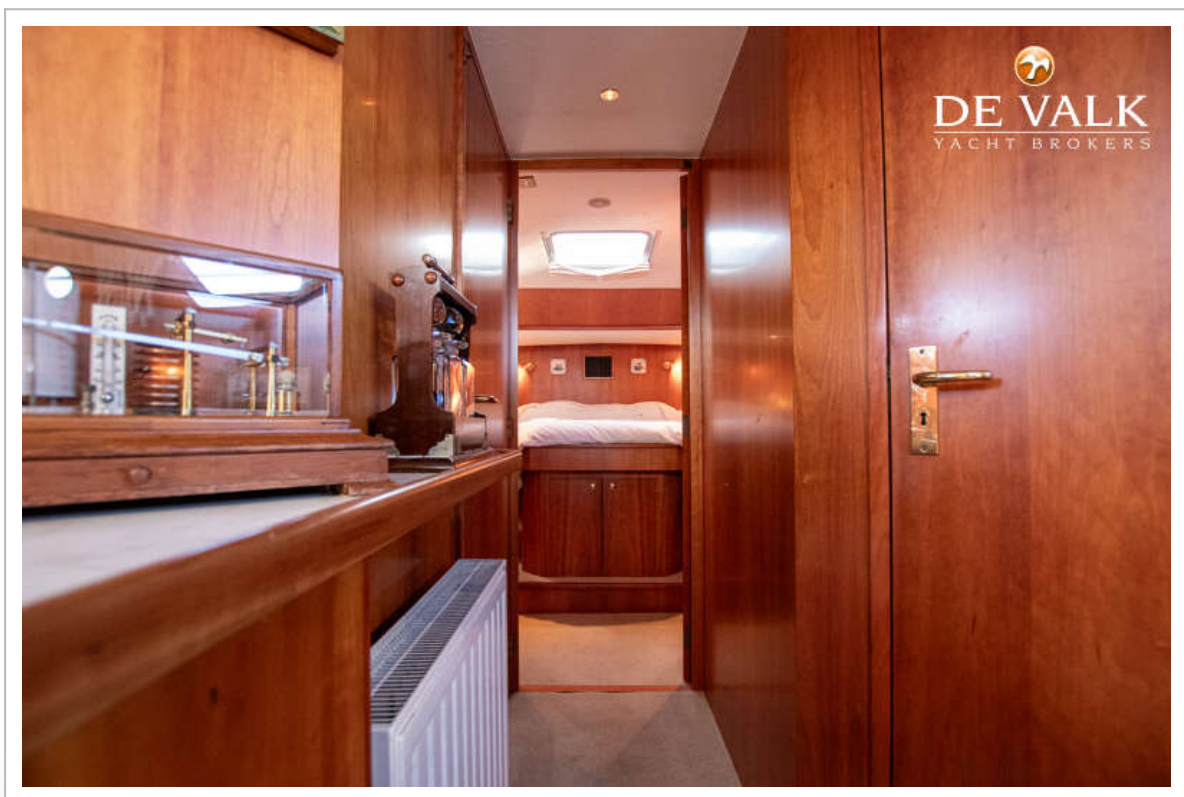
PILOT 50 ALUMINIUM



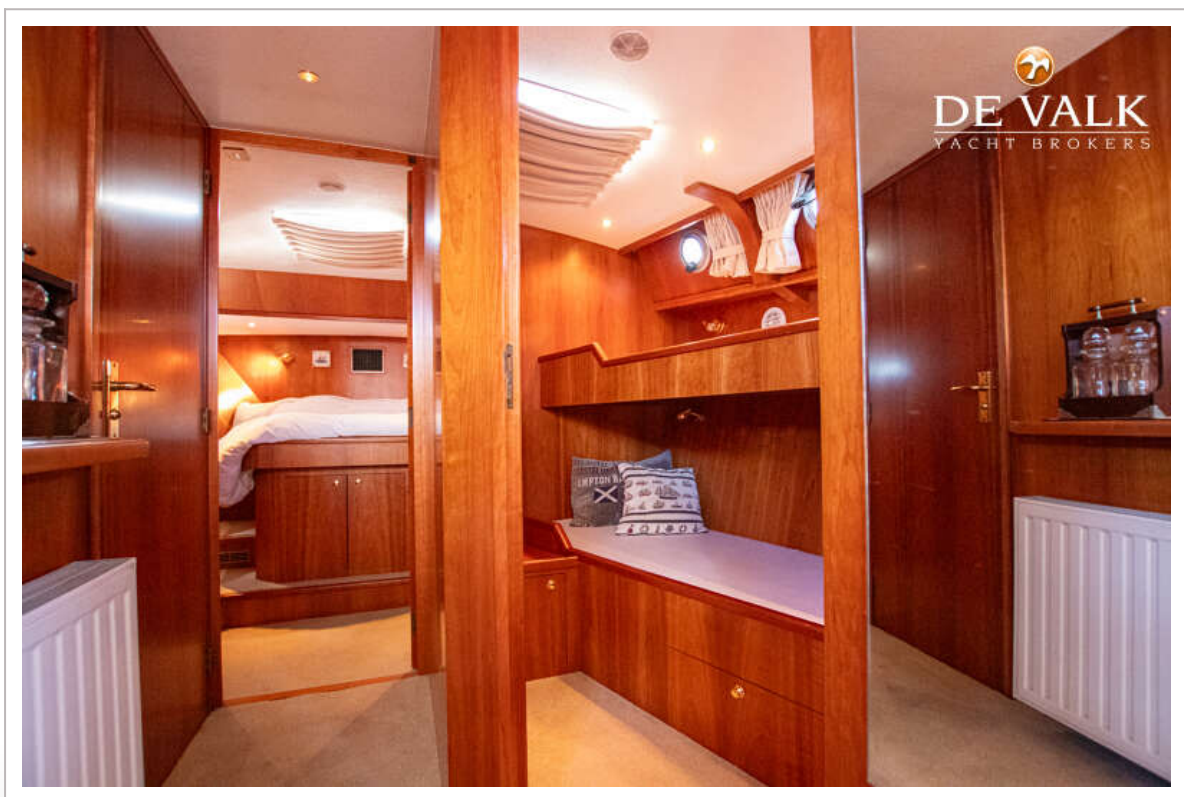
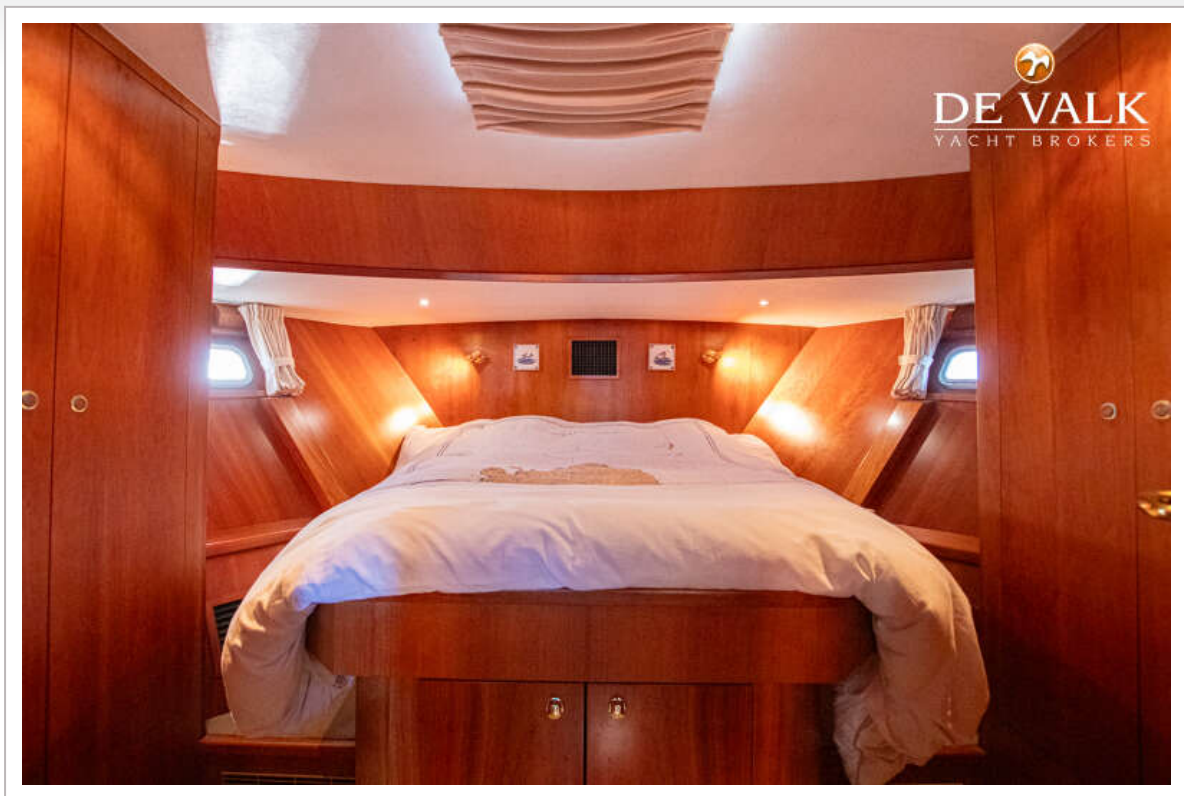
PILOT 50 ALUMINIUM



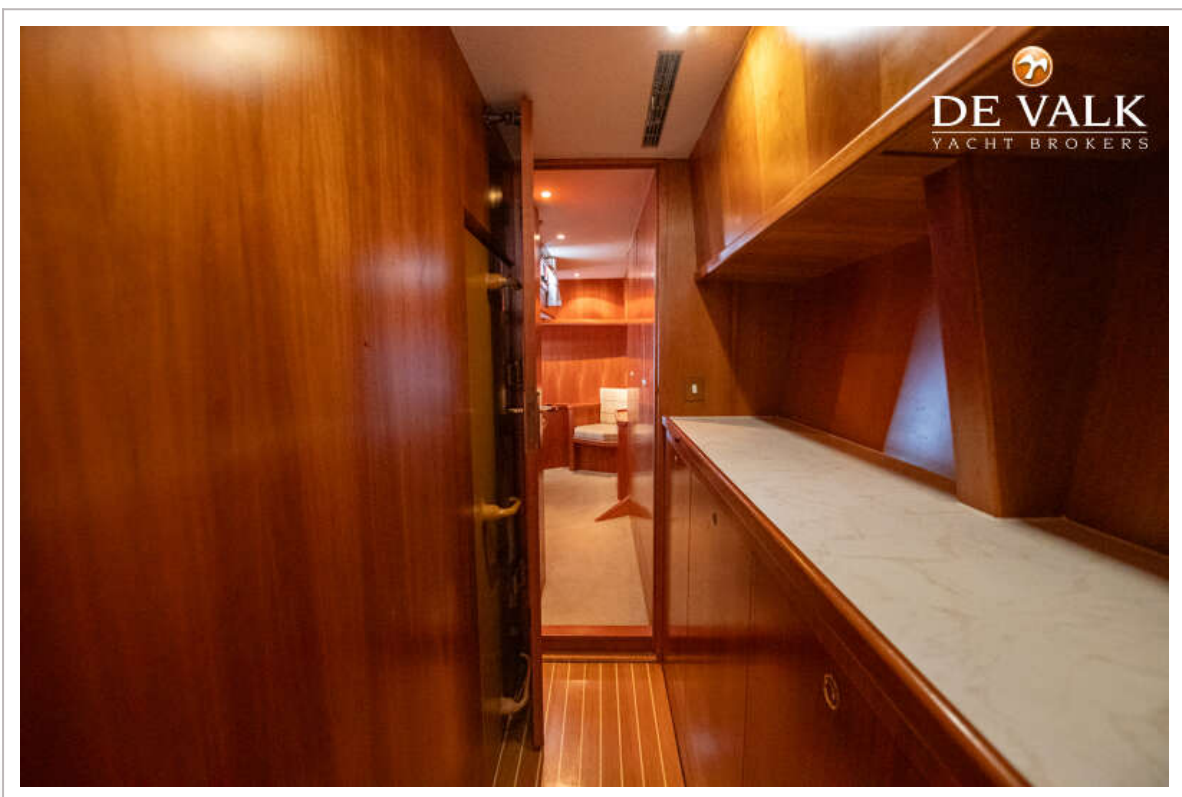
PILOT 50 ALUMINIUM



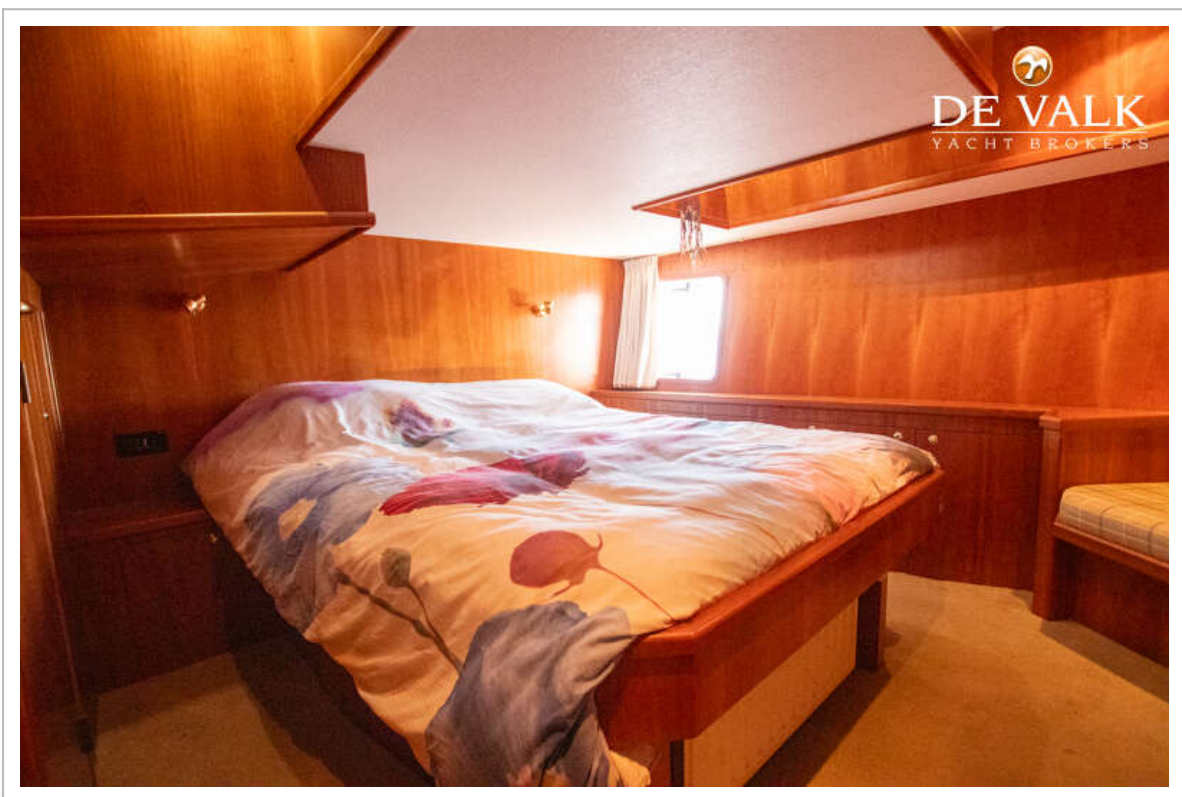
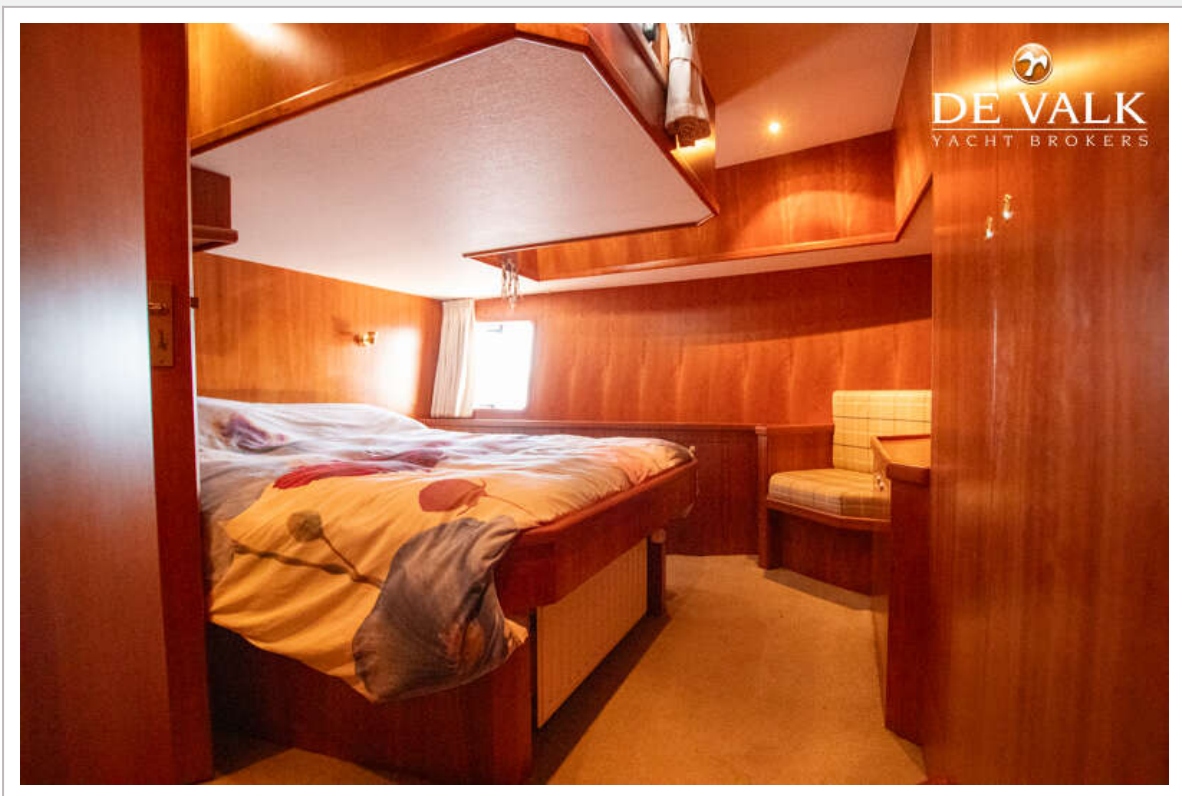
PILOT 50 ALUMINIUM



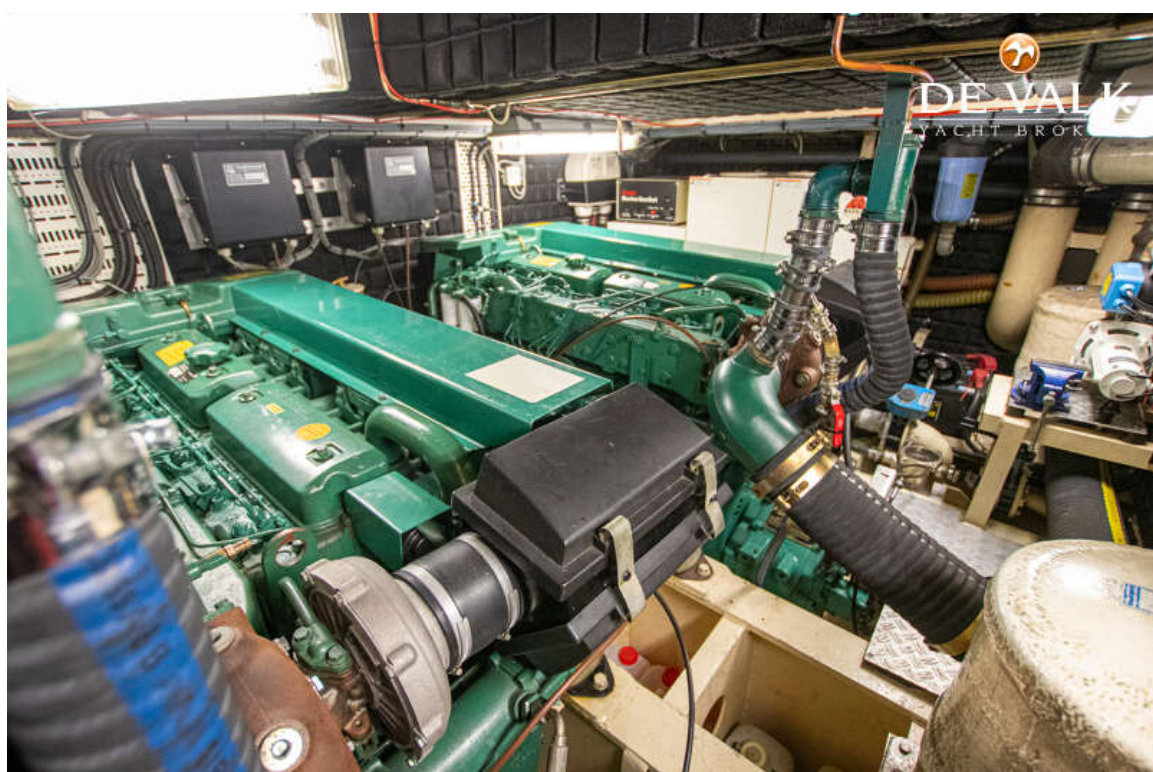
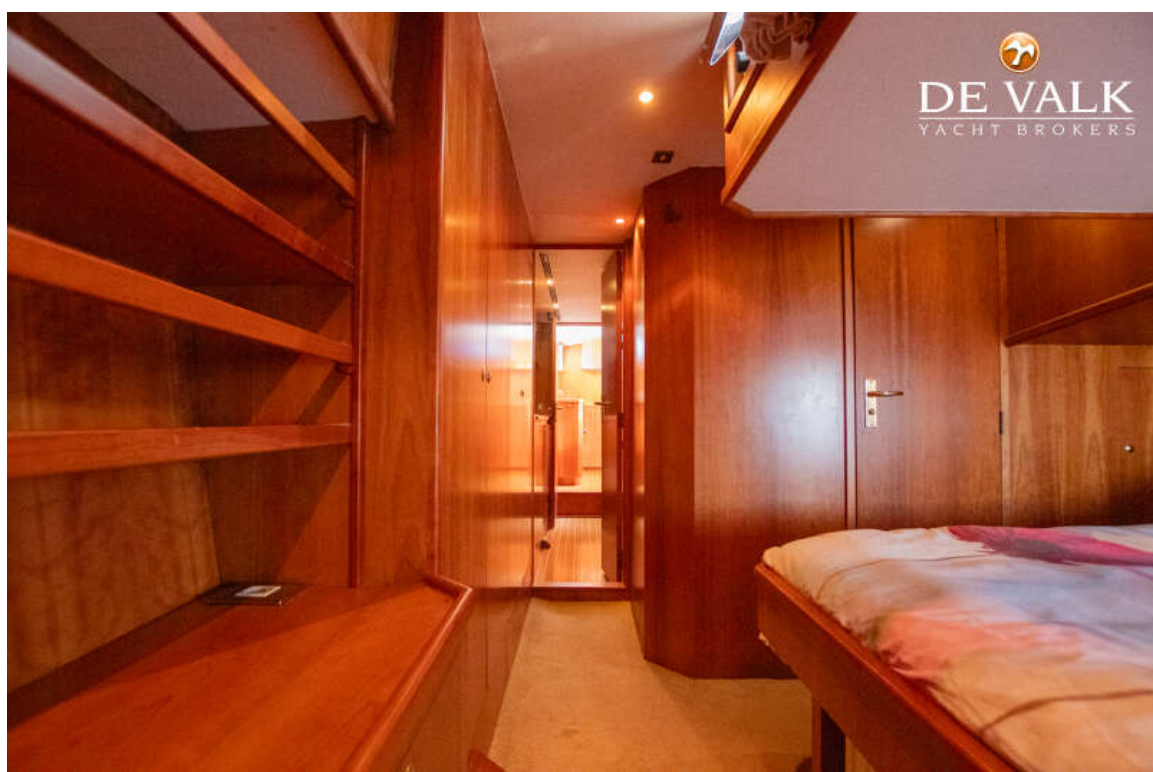
PILOT 50 ALUMINIUM



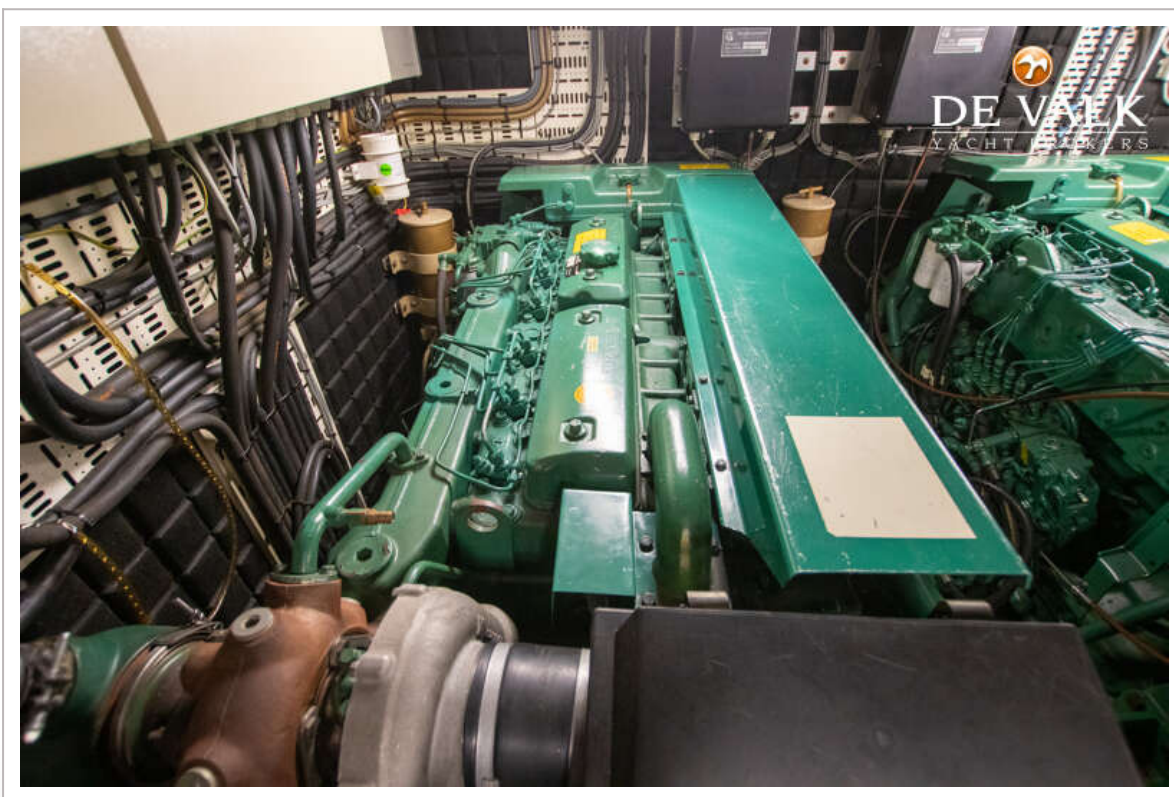
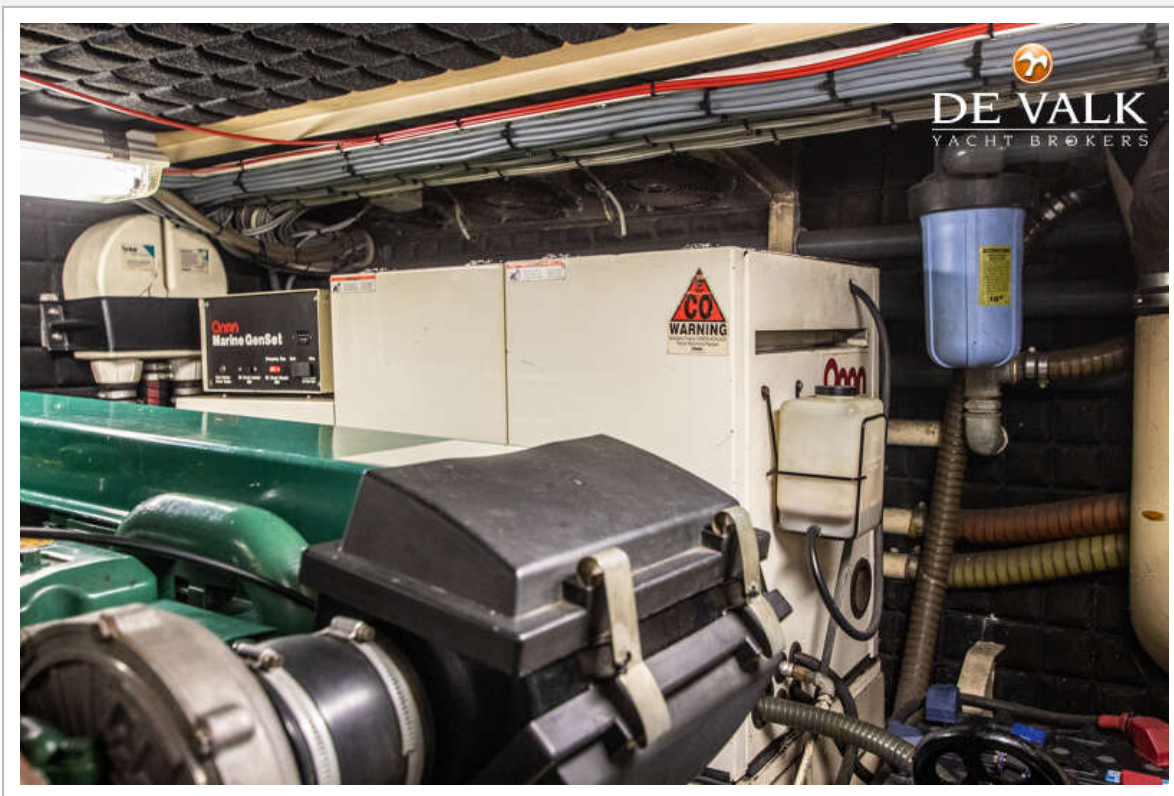
PILOT 50 ALUMINIUM



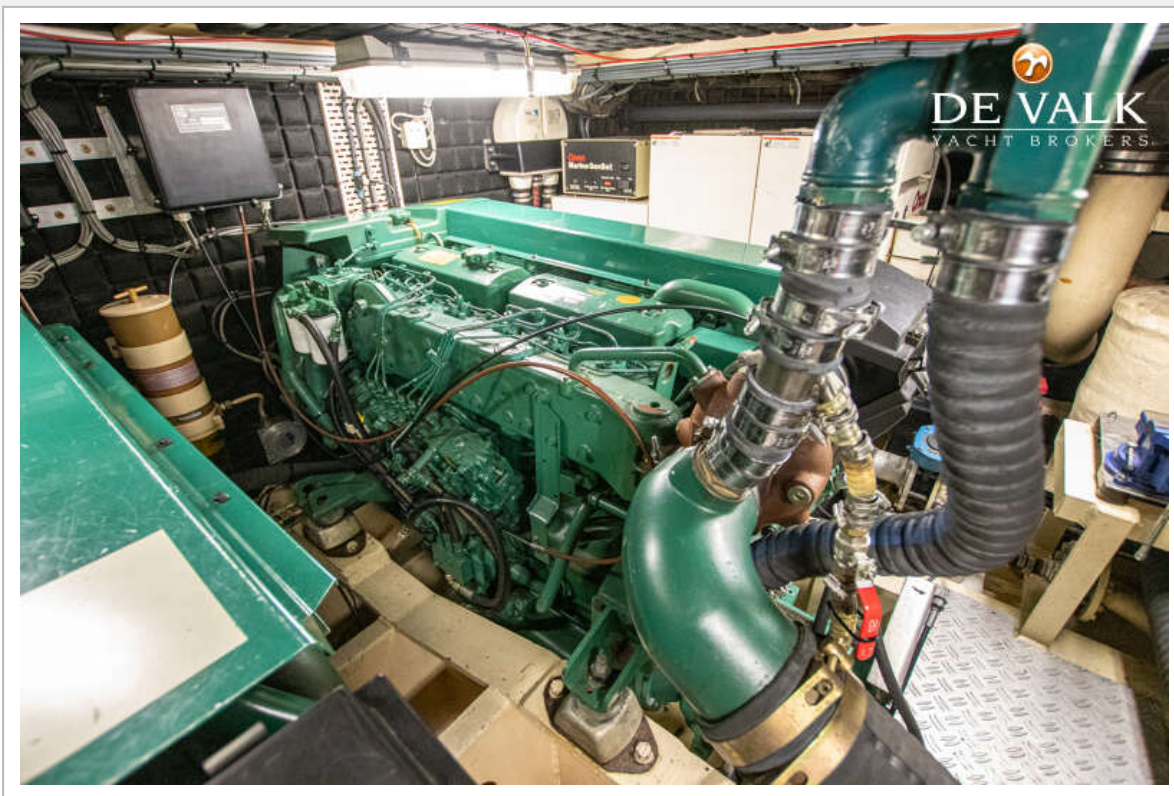
PILOT 50 ALUMINIUM



PILOT 50 ALUMINIUM



PILOT 50 ALUMINIUM



PILOT 50 ALUMINIUM

