



DE VALK
YACHT BROKERS



CONCORD 47.5



DE VALK
YACHT BROKERS

BROKERAGE | CHARTER | BERTHS | FINANCE | INSURANCE | YACHT MANAGEMENT

BROKER'S COMMENTS

This Aluminium Concord 47.5 deck saloon Koopmans sailing yacht is finished to the highest standards. She is ideal for long distance cruising and the electric winches makes her easy to handle. This Concord is complete with central heating, retractable bowthruster, generator, Yanmar diesel engine and much more. She is maintained very well and is a must see. Come visit her now at our sales office in Sint Annaland!

Joris van de Rijt

SPECIFICATIONS

Dimensions	14.45 x 4.30 x 2.15 (m)	Builder	Busmariteam / Tijssen jachtbouw
Built	2000	Cabins	2
Material	Aluminium	Berths	6
Engine(s)	1 x Yanmar 4JH3-HTE diesel	Hp/Kw	97.00 (hp), 71.39 (kw)
Asking price	sold (VAT)	Lying	at sales office

CONTACT

Sales office	De Valk Sint Annaland B.V.	Telephone	+31 (0)166 601 000
Address	Koelhuisweg 4 4697 RM Sint Annaland NL	E-mail	sintannaland@devalk.nl

DISCLAIMER

These particulars are given in good faith as supplied but cannot be guaranteed.



GENERAL

Model	CONCORD 47.5
Type	sailing yacht
LOA (m)	14,45
LWL (m)	11,75
Beam (m)	4,30
Draft (m)	2,15
Air draft (m)	22,00
Headroom (m)	1,88
Year built	2000
Launched	2005
Builder	Busmariteam / Tijssen jachtbouw
Country	The Netherlands
Designer	Koopmans / De Jong
Displacement (t)	15
Ballast (tonnes)	lead in aluminum 5,3
CE norm	NA
Hull material	aluminium
Hull colour	blue
Hull thickness (mm)	6 / 7
Hull shape	round-bilged
Keel type	fin keel with bulb
Superstructure material	aluminium
Superstructure (mm)	5 / 6
Deck plate thickness (mm)	5
Rubbing strake	aluminum
Deck material	aluminium
Deck finish	teak
Superstructure deck finish	non-skid paint
Cockpit deck finish	teak
Dorades	yes



Window frame	aluminium
Window material	tempered glass
Deckhatch	yes
Insulation	foam
Radar arch	non collapsible
Fuel tank (litre)	aluminium 450
Level indicator (fuel tank)	yes
Fuel daytank (litre)	polyethylene 70
Level indicator (daytank)	yes
Freshwater tank (litre)	aluminium 500
Level indicator (freshwater)	yes
Blackwater tank (litre)	polyethylene 2 x
Level indicator (blackwater)	yes
Blackwater tank extraction	deck extraction + pump
Wheel steering	rack & pinion
Emergency tiller	yes
More info on paintwork	Hull + superstructure painted in 2017

ACCOMMODATION

Cabins	2
Berths	6
Interior	teak
Floor	teak
Deck saloon	yes
Saloon	yes
Headroom saloon (m)	1,88
Heating	central heating Webasto
Navigation center	yes
Chart table	yes
Dinette	yes
Dinette to convert into berth	yes



Sliding door to cockpit	yes
Galley	yes
Countertop	corian
Sink	stainless steel
Cooker	calor gas Force 10
Oven	Force 10
Extractor	yes
Fridge	yes
Hot water system	220V/engine/heating
Water pressure system	electrical
Manual and/or foot pump	yes
Owners cabin	double bed
Bed length (m)	1,90 x 1,50
Wardrobe	hanging/drawers/shelves
Toilet	en suite
Toilet system	electric Tecma
Wash basin	at the toilet
Guest cabin 1	double bed
Bed length (m)	2,05 x 1,00
Wardrobe	hanging and shelves
Bathroom	shared
Toilet	shared
Toilet system	electric Tecma
Wash basin	in the bathroom
Shower	shared
Washing machine	Candy aquamatic

MACHINERY

No of engines	1
Make	Yanmar
Type	4JH3-HTE



HP	97
kW	71,39
Fuel	diesel
Year installed	2000
Maximum speed (kn)	8
Cruising speed (kn)	6
Engine hours	3663
Engine cooling system	freshwater heat exchanger
Drive	shaft
Engine controls	bowden cable
Bowthruster	electric Max power 140 duo retractable
Propeller type	feathering Max prop
Propeller blades	3
Propeller shaft material	stainless steel
Manual bilge pump	yes
Electric bilge pump	yes
Electrical installation	24 v 230 v
Generator	silent separator Mastervolt Whisper 3500
Start battery	Vetus 110 ah
Service battery	4 x 200 ah (2021)
Battery monitor	Mastervolt
Battery charger	Mastervolt Mass 24/75
Inverter	Mastervolt Mass Sine 24/2500
Shorepower	with cable

NAVIGATION

Compass	Plastimo
Depth sounder	Raymarine ST60
Log	Raymarine ST60
Windset	Raymarine ST60
Repeater	Raymarine ST60



VHF	Simrad RS87
VHF handheld	Raymarine Ray 101E
Autopilot	Raymarine ST7001 with remote
Rudder angle indicator	On autopilot
Radar/GPS/plotter	Raymarine E80 + raymarine E120
Electronic chart(s)	yes
AIS transponder	yes
Navigation lights	yes

EQUIPMENT

Fixed hardtop	yes
Cockpit table	yes
Bathing platform	yes
Boarding ladder	stainless steel
Bow ladder	yes
Deck shower	yes
Anchor	Delta 25 KG
Anchor chain	70 M 8 MM heavy duty stainless steel
Windlass	electrical Lewmar Ocean 3
Capstan	On windlass
Deck wash	yes
Outboard support	yes
Davits	stainless steel Collapsible and re-integrated in pullpit
Davits controls	manual
Sea railing	wire
Grab rail (superstructure)	stainless steel
Railing side opening gates	2 x
Lifebuoy	2 x
Danbuoy	yes
Safety lines on deck	yes
Radar reflector	yes



Fenders	yes
Mooring lines	yes
Spare parts	yes
TV	JVC
Radio-cd player	JVC
DVD player	yes
iPod connection	yes
Cockpit speakers	yes
Speakers in salon	yes
Clock - barometer	yes
Fire extinguisher	2 x

RIGGING

Rigging	sloop (2005)
Standing rigging	Dyform
Brand mast	Hallspars
Material mast	aluminium
Spreaders	3 sets
Mainsail cover	yes
Battcars	yes
Fully battened mainsail	Hagoort cruising tourline (2018)
Cutterstay	+ Jib
Genoa	Haagort CDX laminate triradial offshore (2018)
Genoa furler	yes
Genoa cover	yes
Cutter furler	yes
Gennaker	1 x 140m2 + 1x 180m2
Stormjib	yes
Reefing System	slabreefing
Backstay adjuster	hydraulic Holmatro
Boomvang	hydraulic Holmatro



Primary sheet winch	1 x Andersen 46 st
Genoa sheetwinches	2 x Andersen 58 st electric + 2 x Andersen 46 st
Halyard winches	1 x Andersen 46 st electric + 1 x Andersen 46 st
Reefing winch	1 x Andersen 40 st



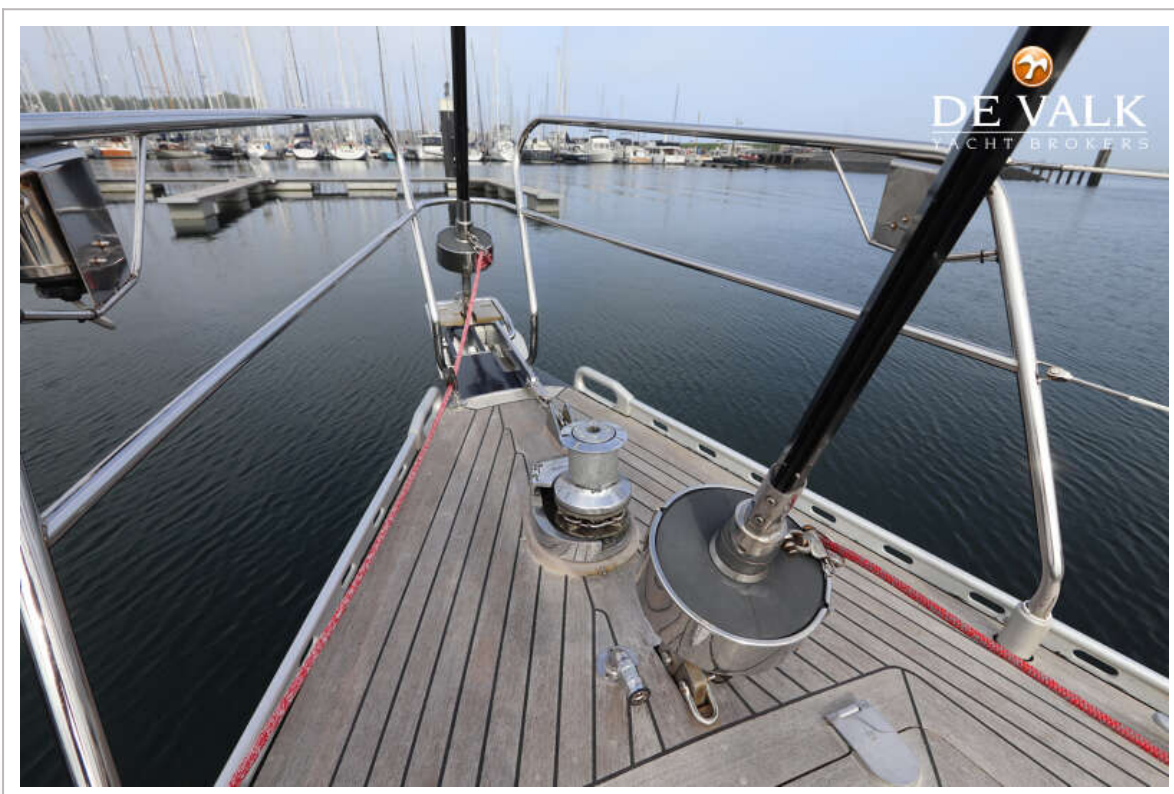
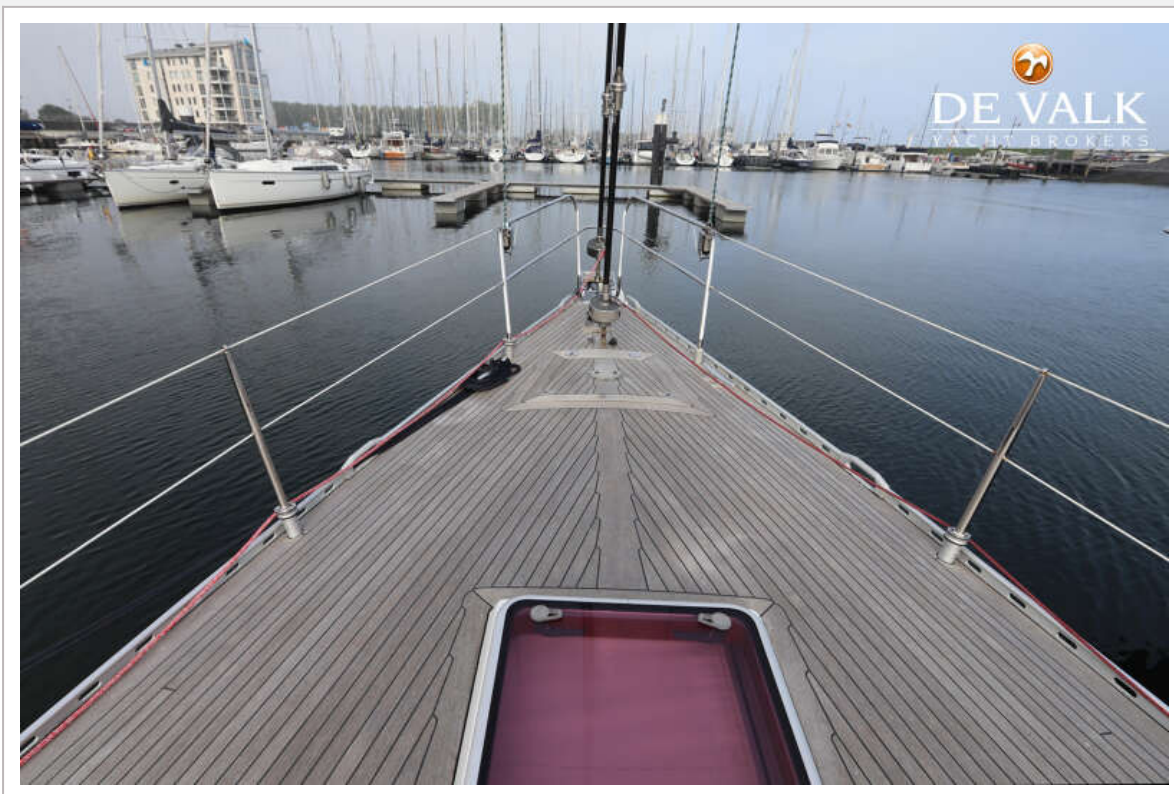
CONCORD 47.5



CONCORD 47.5



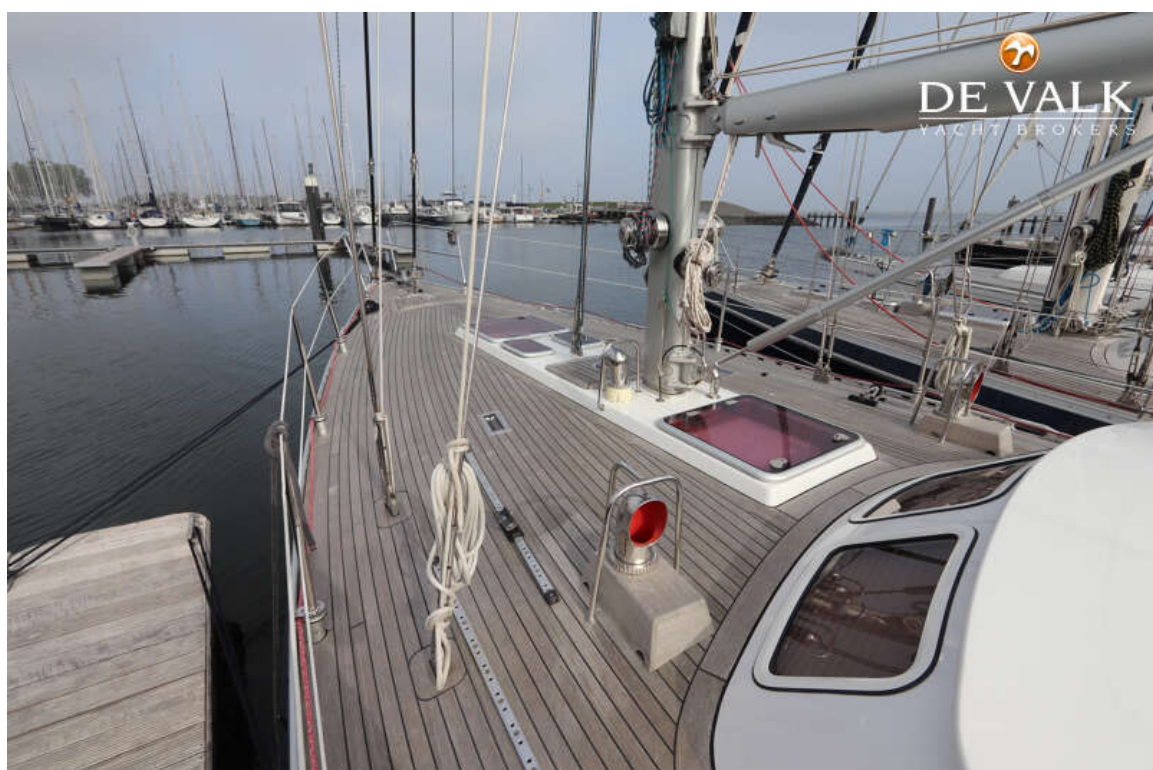
CONCORD 47.5



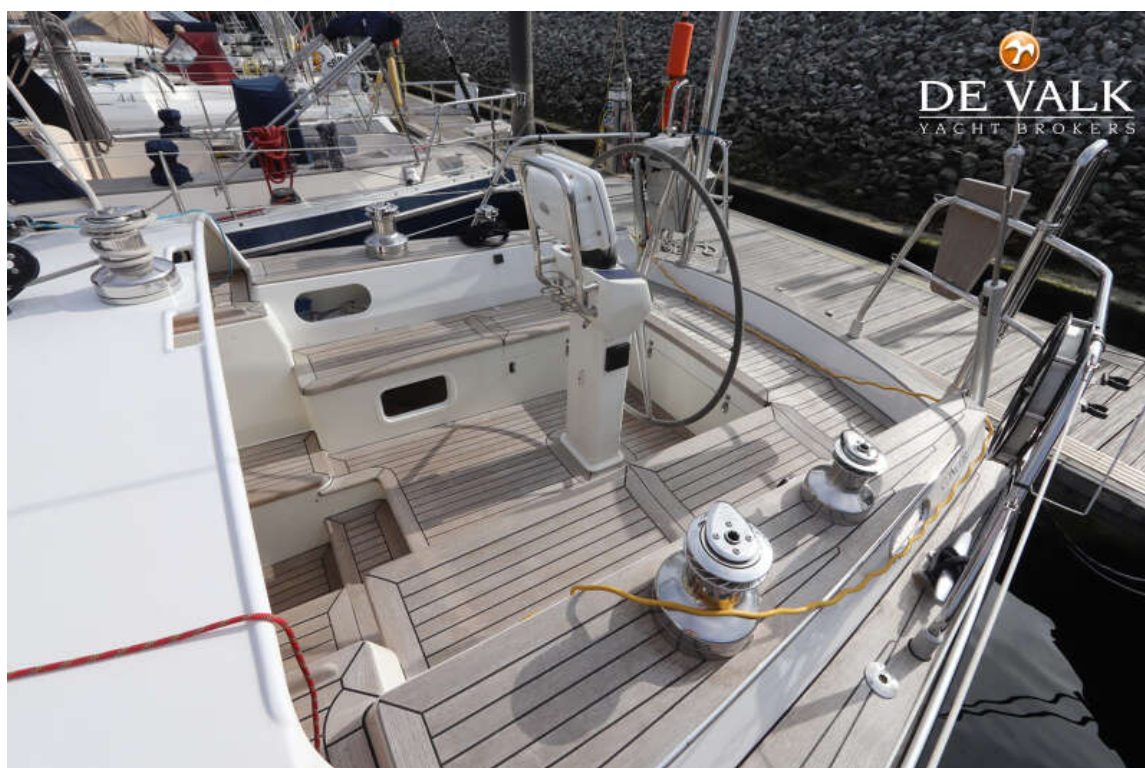
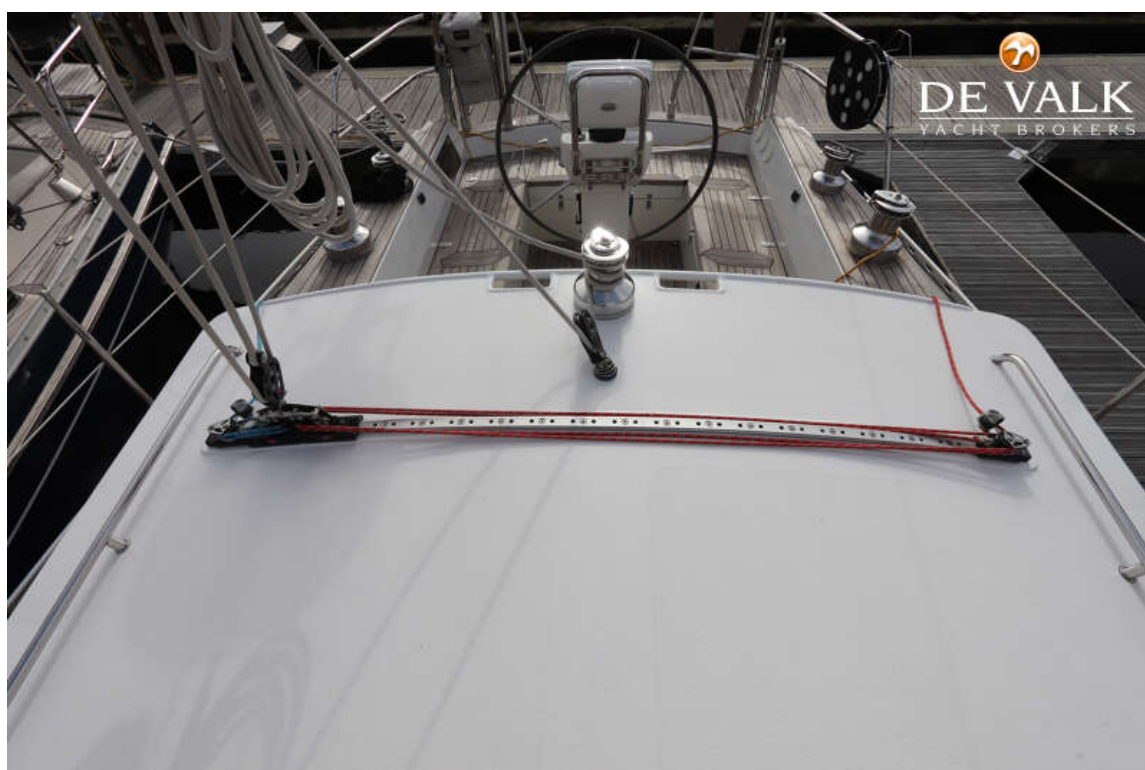
CONCORD 47.5



CONCORD 47.5



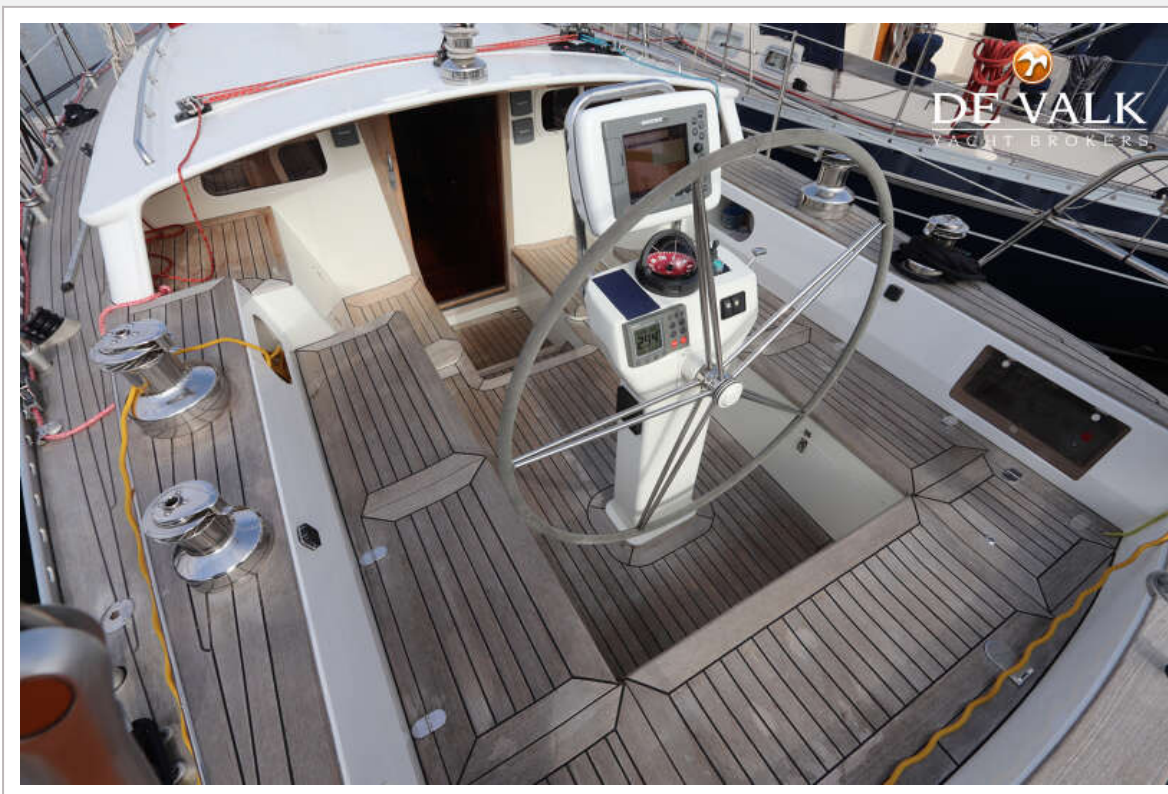
CONCORD 47.5



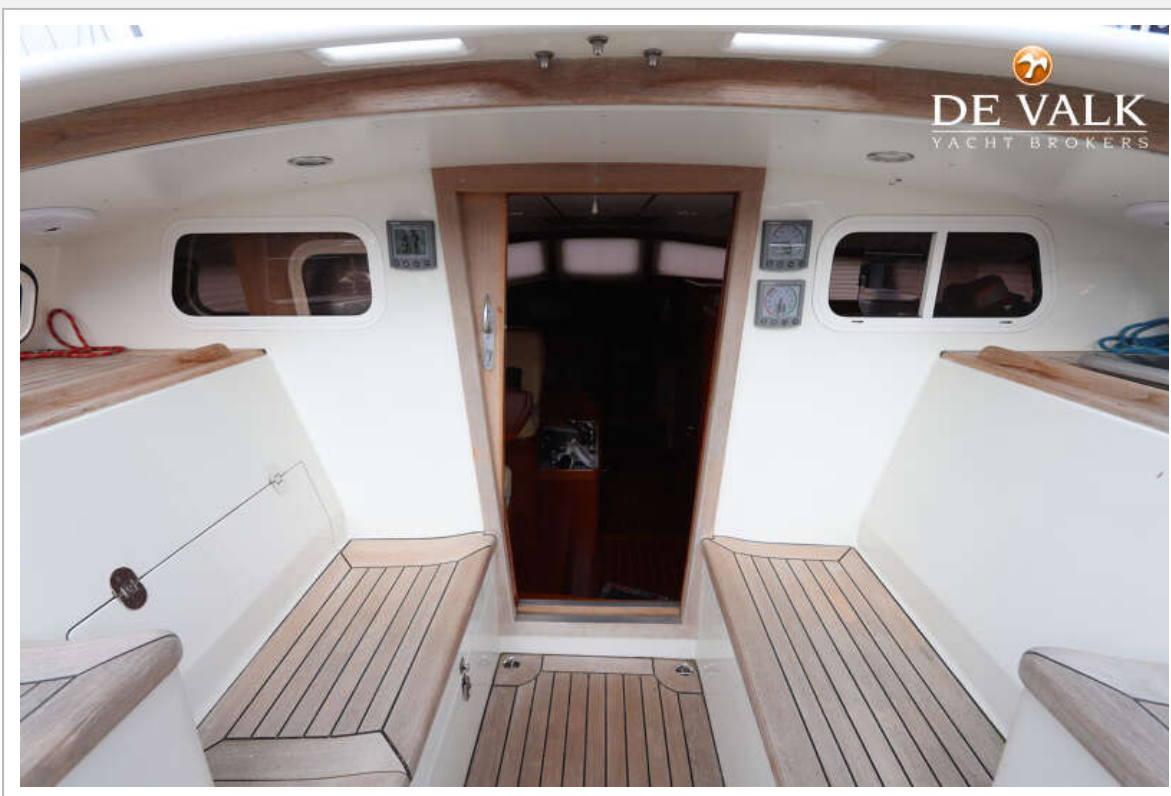
CONCORD 47.5



CONCORD 47.5



CONCORD 47.5



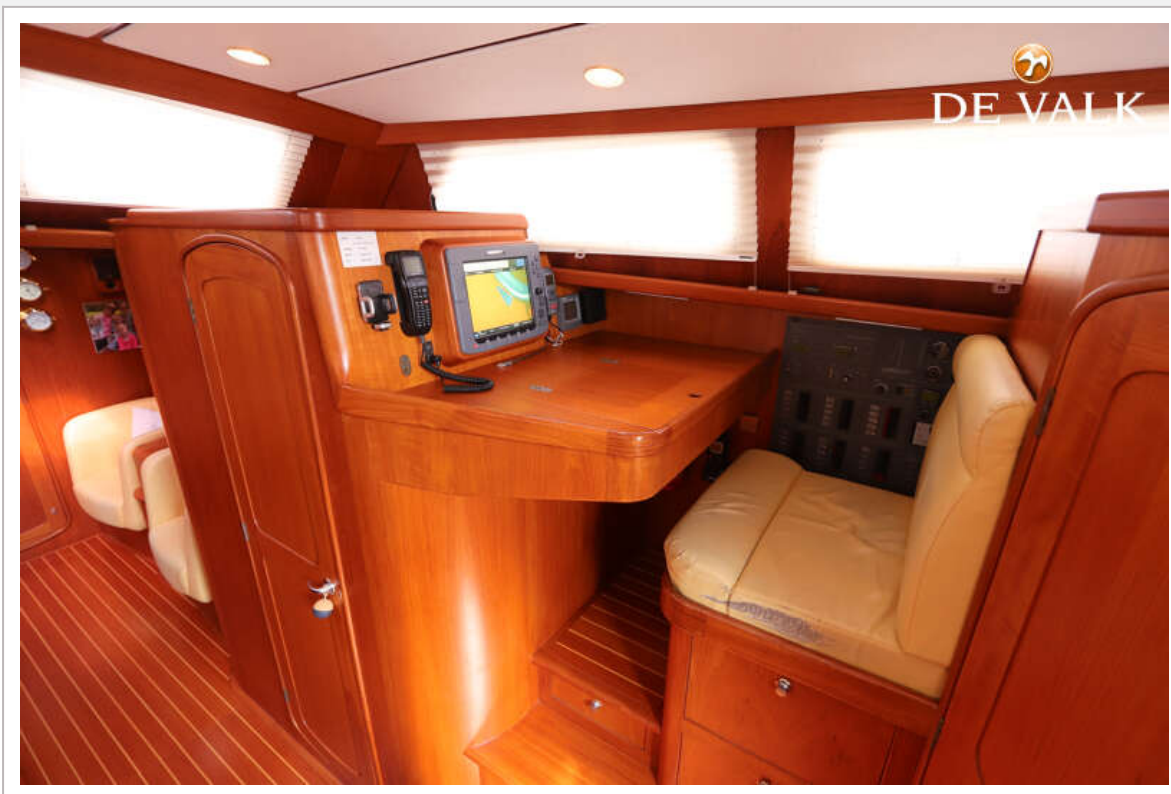
CONCORD 47.5



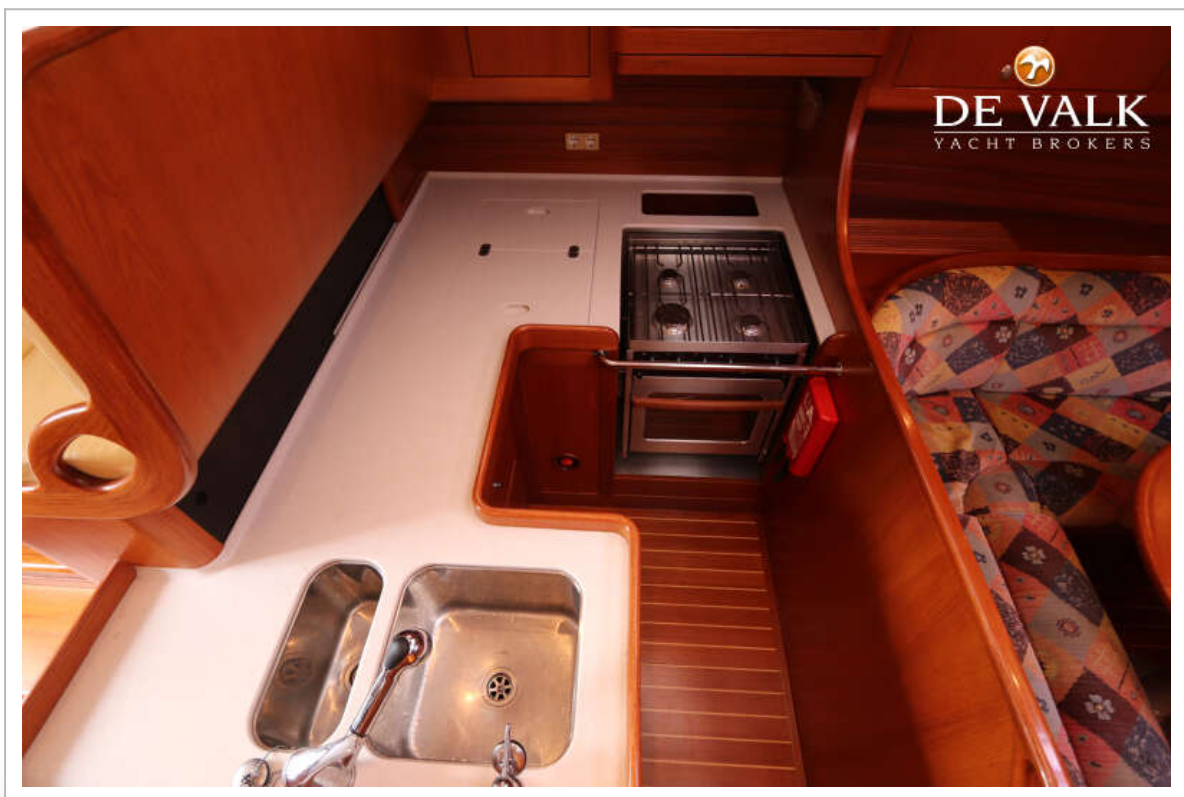
CONCORD 47.5



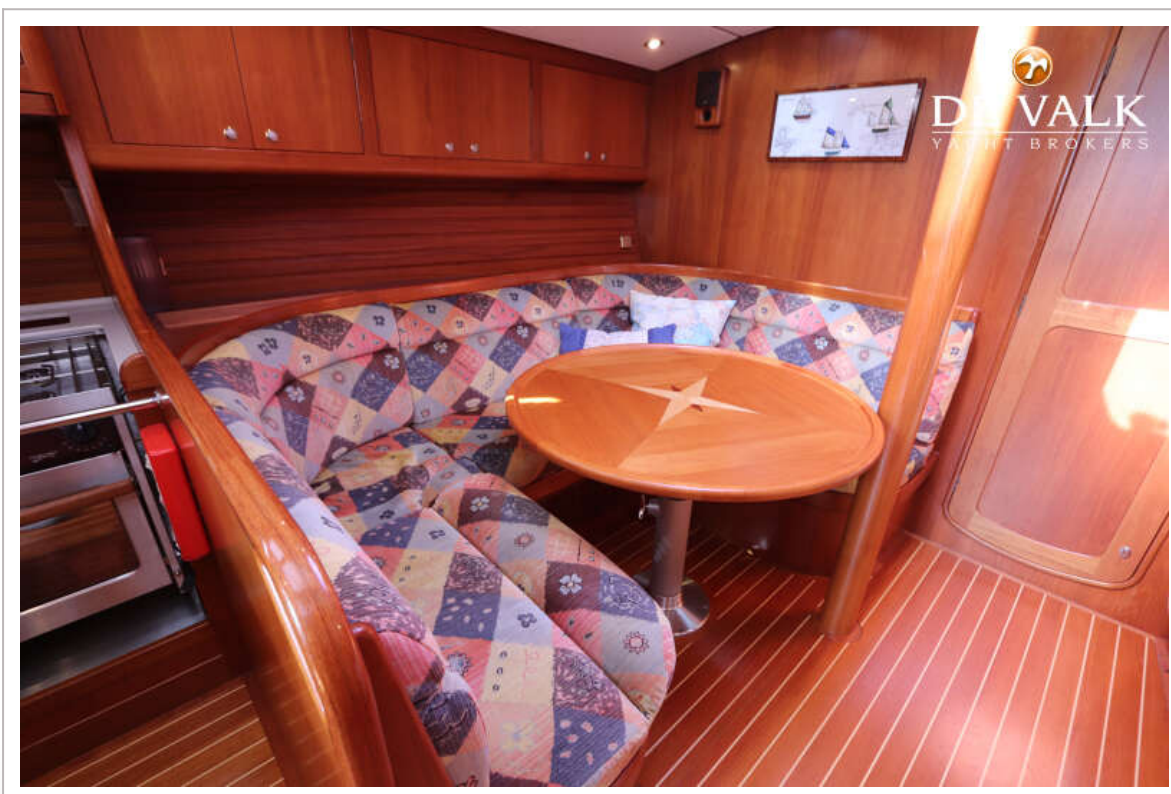
CONCORD 47.5



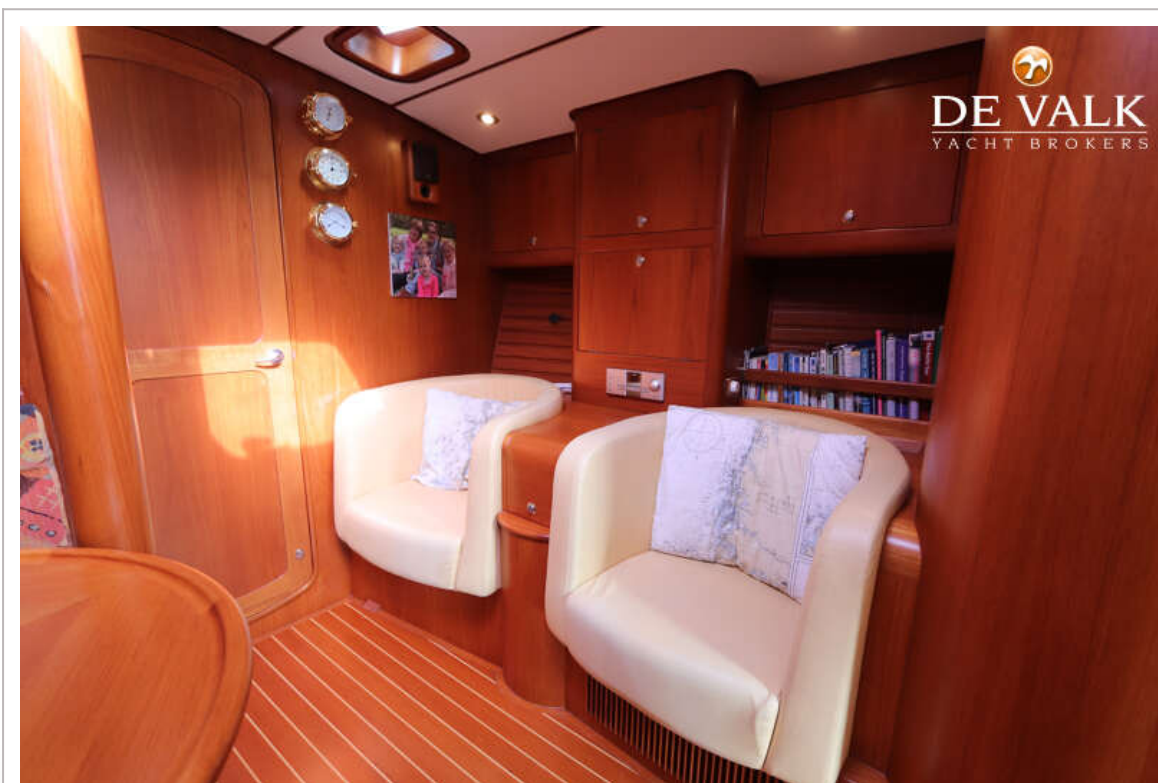
CONCORD 47.5



CONCORD 47.5

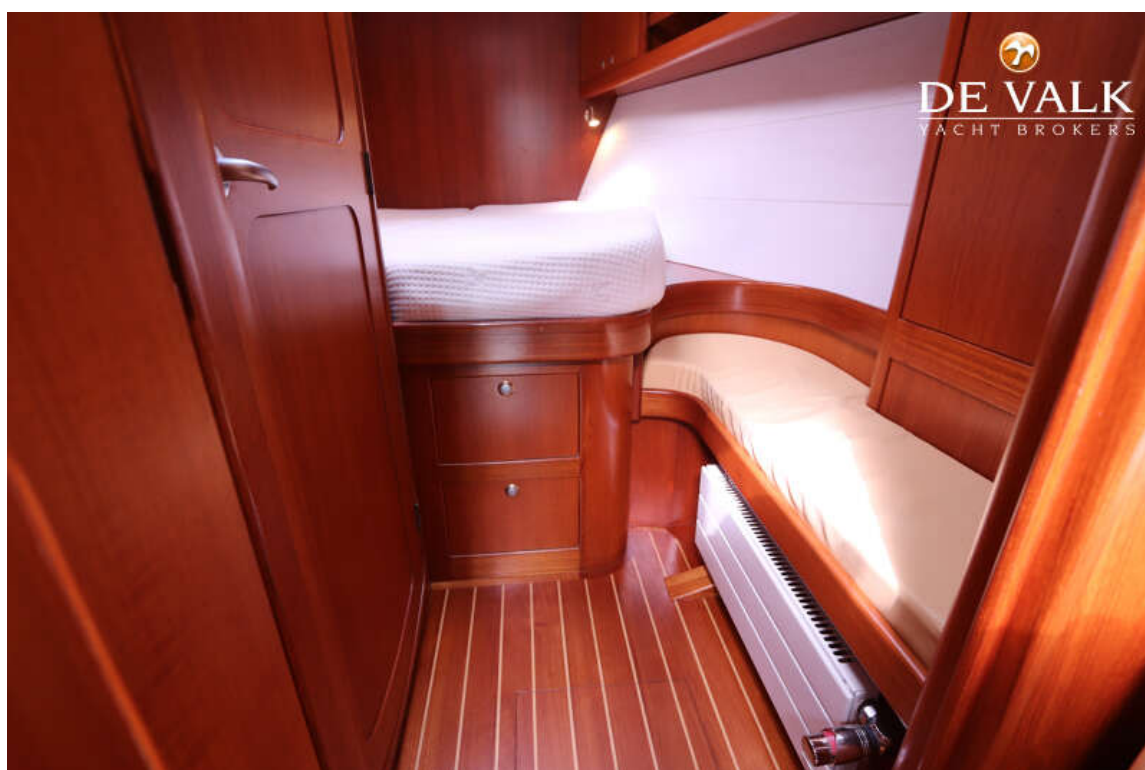


CONCORD 47.5

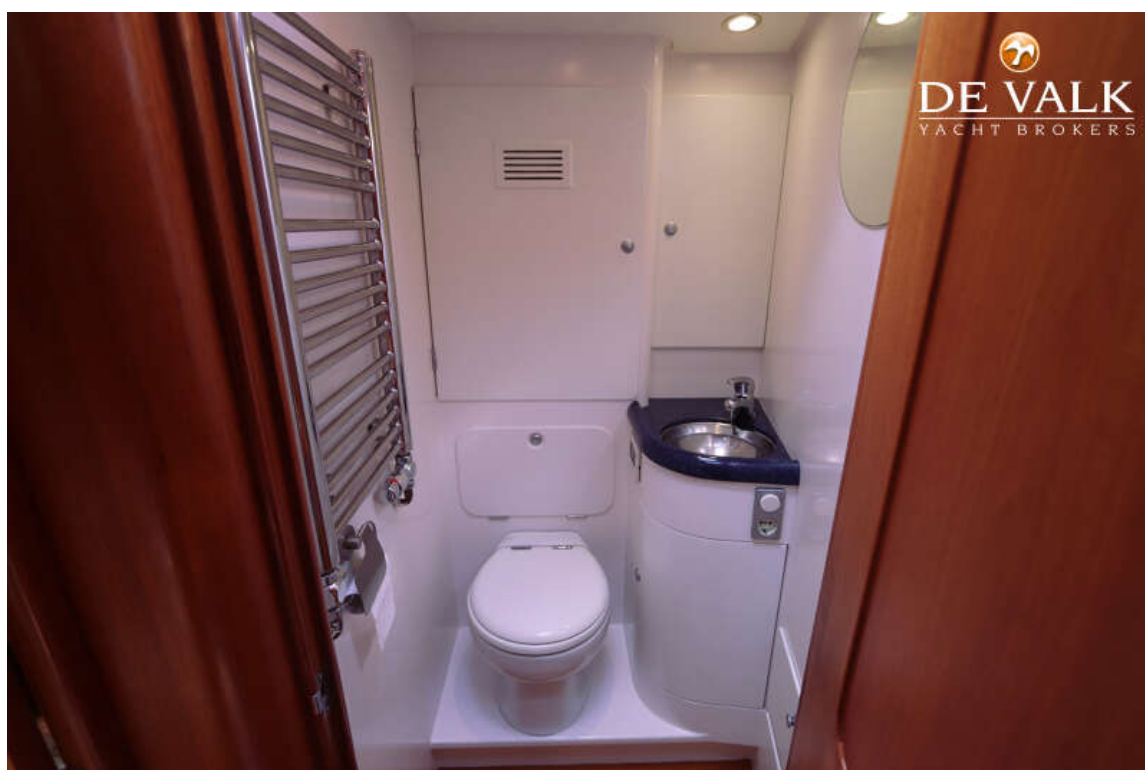




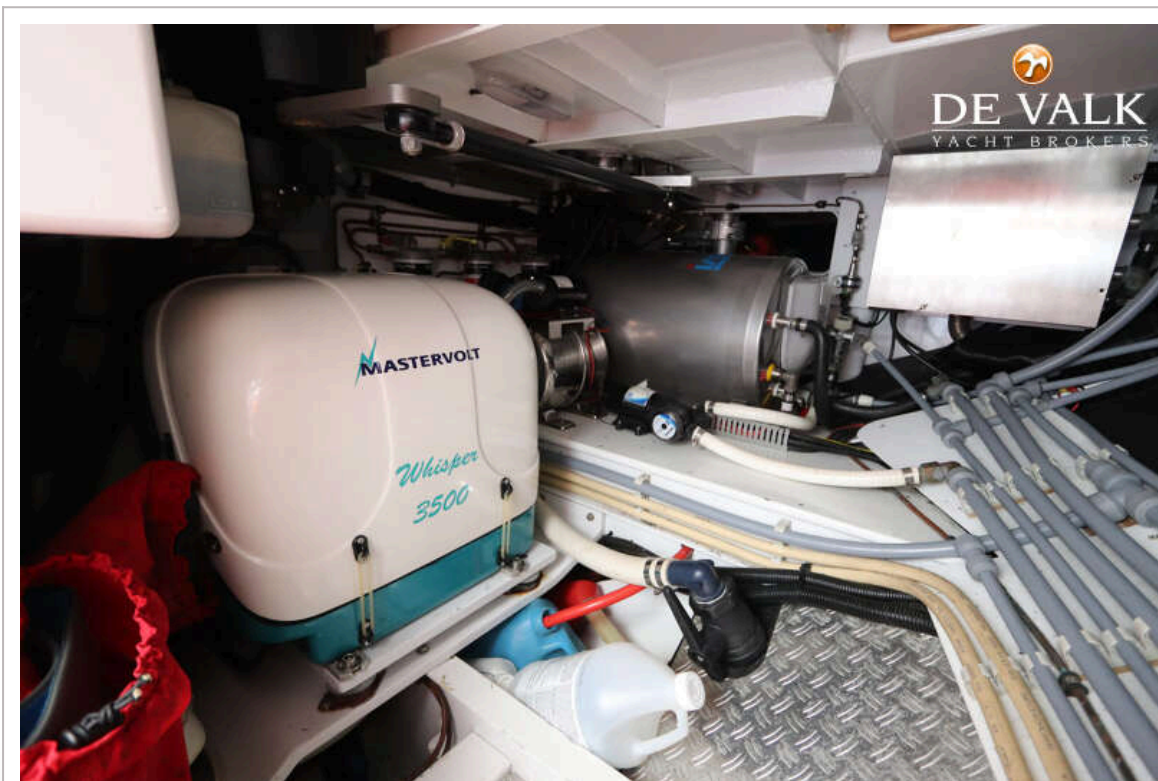
CONCORD 47.5



CONCORD 47.5



CONCORD 47.5



CONCORD 47.5

