



DE VALK  
YACHT BROKERS



## AQUASTAR 43 AFT CABIN



DE VALK  
YACHT BROKERS

# AQUASTAR 43 AFT CABIN

## BROKER'S COMMENTS

The Aquastar shipyard on Guernsey is well known and appreciated for building seaworthy yachts in several sizes. This 43 aft cabin version is a pleasant motor yacht for several reasons: inside she offers lots onboard living space, twin steering positions, low air draft for the French Canals and cruise comfortably and safely at 18 knots on the North Sea. Dry stored with her current owner since 2009, well kept and steadily upgraded. The quality in construction and sturdiness is very good. This is "a real motor yacht" in every sense.

*Marc Weijenberg*

## SPECIFICATIONS

<b>Dimensions</b>	13.80 x 4.15 x 1.25 (m)	<b>Builder</b>	Aqua-Star Ltd Guernsey
<b>Built</b>	1999	<b>Cabins</b>	2
<b>Material</b>	GRP	<b>Berths</b>	7
<b>Engine(s)</b>	2 x Volvo Penta TAMD 63 diesel	<b>Hp/Kw</b>	2 x 370.00 (hp), 271.95 (kw)
<b>Asking price</b>	sold (VAT )	<b>Lying</b>	at sales office

## CONTACT

<b>Sales office</b>	De Valk Sint Annaland B.V.	<b>Telephone</b>	+31 (0)166 601 000
<b>Address</b>	Koelhuisweg 4 4697 RM Sint Annaland NL	<b>E-mail</b>	sintannaland@devalk.nl

## DISCLAIMER

These particulars are given in good faith as supplied but cannot be guaranteed.



# AQUASTAR 43 AFT CABIN

## GENERAL

Model	AQUASTAR 43 AFT CABIN
Type	motor yacht
LOA (m)	13,80
Beam (m)	4,15
Draft (m)	1,25
Air draft (m)	3,20
Headroom (m)	1,94
Year built	1999
Builder	Aqua-Star Ltd Guernsey
Country	Great Britain
Designer	Geoff Wilson
Displacement (t)	17
CE norm	B
Hull material	GRP
Hull colour	blue
Hull shape	round-bilged
Keel type	long keel
Superstructure material	GRP
Rubbing strake	rubber
Deck material	GRP
Deck finish	teak
Superstructure deck finish	teak
Cockpit deck finish	teak
Dorades	2
Window frame	aluminium
Window material	glass
Deckhatch	2
Portholes	yes
Radar arch	collapsible
Fuel tank (litre)	aluminium 2273



# AQUASTAR 43 AFT CABIN

Level indicator (fuel tank)	yes
Freshwater tank (litre)	GRP 646
Level indicator (freshwater)	yes
Blackwater tank (litre)	polyethylene 2 tanks
Blackwater tank extraction	deck extraction + pump
Wheel steering	hydraulic
Inside helm position	yes
Outside helm position	hydraulic
More info on paintwork	hull spraypainted 2011

## ACCOMMODATION

Cabins	2
Berths	7
Interior	teak
Floor	teak and holly
Aft deck	yes
Pilot house/deck saloon	yes
Saloon	new upholstery 2015
Headroom saloon (m)	1,94
Heating	diesel ducted hot air Webasto
Chart table	yes
Aft Cabin	yes
Dinette to convert into berth	opposed to the galley
Galley	yes
Countertop	corian
Sink	stainless steel Double
Cooker	calor gas 3 burners
Oven	yes
Gas alarm	yes
Microwave	Samsung
Fridge	with freezer compart Isotherm (+1 extra in salon)



# AQUASTAR 43 AFT CABIN

Hot water system	220V + engine
Water pressure system	electrical
Owners cabin	twin single
Bed length (m)	1,90 x 0,90
Wardrobe	hanging/drawers/shelves
Bathroom	en suite
Toilet	en suite
Toilet system	electric
Wash basin	in the bathroom
Shower	en suite
Extra info	dressing tabel aft
Guest cabin 1	v-bed
Bed length (m)	1,95
Wardrobe	hanging and drawers
Bathroom	en suite
Toilet	en suite
Toilet system	manual
Wash basin	in the bathroom
Shower	en suite
Extra info	new ceiling salon 2019

## MACHINERY

No of engines	2
Make	Volvo Penta
Type	TAMD 63
HP	370,00
kW	271,95
Fuel	diesel
Year installed	1999
Maximum speed (kn)	22
Cruising speed (kn)	8



# AQUASTAR 43 AFT CABIN

Consumption (l/hr)	12 at 7 knots
Engine hours	2347
Engine cooling system	freshwater heat exchanger
Drive	shaft
Shaft seal	refurbished 2019
Engine controls	bowden cable
Bowthruster	electric Sidepower SP95TI (2007)
Exhaust	watercooled
Propeller type	fixed Bronze
Propeller blades	4
Propeller shaft material	stainless steel
Manual bilge pump	yes
Electric bilge pump	yes
Generator	wet exhaust Mastervolt Whisper 3kVa
Start battery	2
Service battery	4
Generator battery	1
Bowthruster battery	1
Battery monitor	Mastervolt
Battery charger	Mastervolt 12/70-3 Chargemaster
Inverter	12v/220/1500watt
Shorepower	with cable
Trimtabs	yes
Extra info	Two bronze rudders
Extra info	auto change-over

## NAVIGATION

Compass	Plastimo (inside)
Depth sounder/log	+ inside repeater Simrad IS15
VHF	Marine IC-M601 and Scanti VHF 3000
Autopilot	+ inside repeater Simrad AP20



# AQUASTAR 43 AFT CABIN

Rudder angle indicator	via autopilot
GPS	Garmin 3005c MAP
Radar/GPS/plotter	+ inside repeater Simrad NSE12 (2015)
Camera	via plotter

## EQUIPMENT

Fixed windscreen	collapsible
Sprayhood	can be fully closed
Cockpit cushions	yes
Cockpit table	yes
Cockpit chairs	yes
Bathing platform	yes
Boarding ladder	stainless steel
Deck shower	Hot and cold
Anchor	Bruce
Anchor chain	yes
Windlass	electrical S&L
Capstan	yes
Dinghy	rigid inflatable
Outboard	3,5 hp 4-stroke
Sea railing	stainless steel
Railing side opening gates	with side step
Life raft	container Plastimo
Life raft (pers)	6
Last life raft survey	2014
Lifebuoy	yes
Rope cutter	yes
Wiper	2x3 including washer on top windows
Horn	air pressure
Radar reflector	Sea-Me active
Fenders	yes



# AQUASTAR 43 AFT CABIN

Mooring lines	yes
TV	yes
TV receiver	yes
Radio-cd player	yes
Speakers in salon	yes
Fire extinguisher	with wash
Auto extinguisher system	yes





# AQUASTAR 43 AFT CABIN



## AQUASTAR 43 AFT CABIN

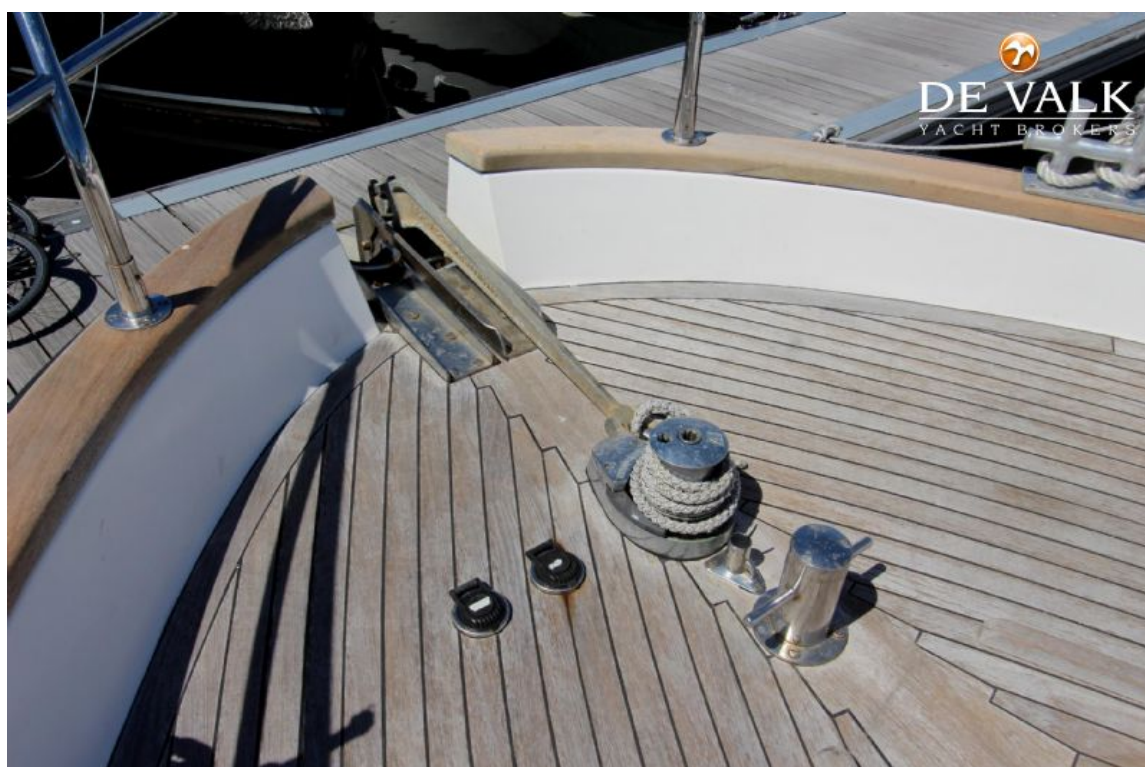




# AQUASTAR 43 AFT CABIN

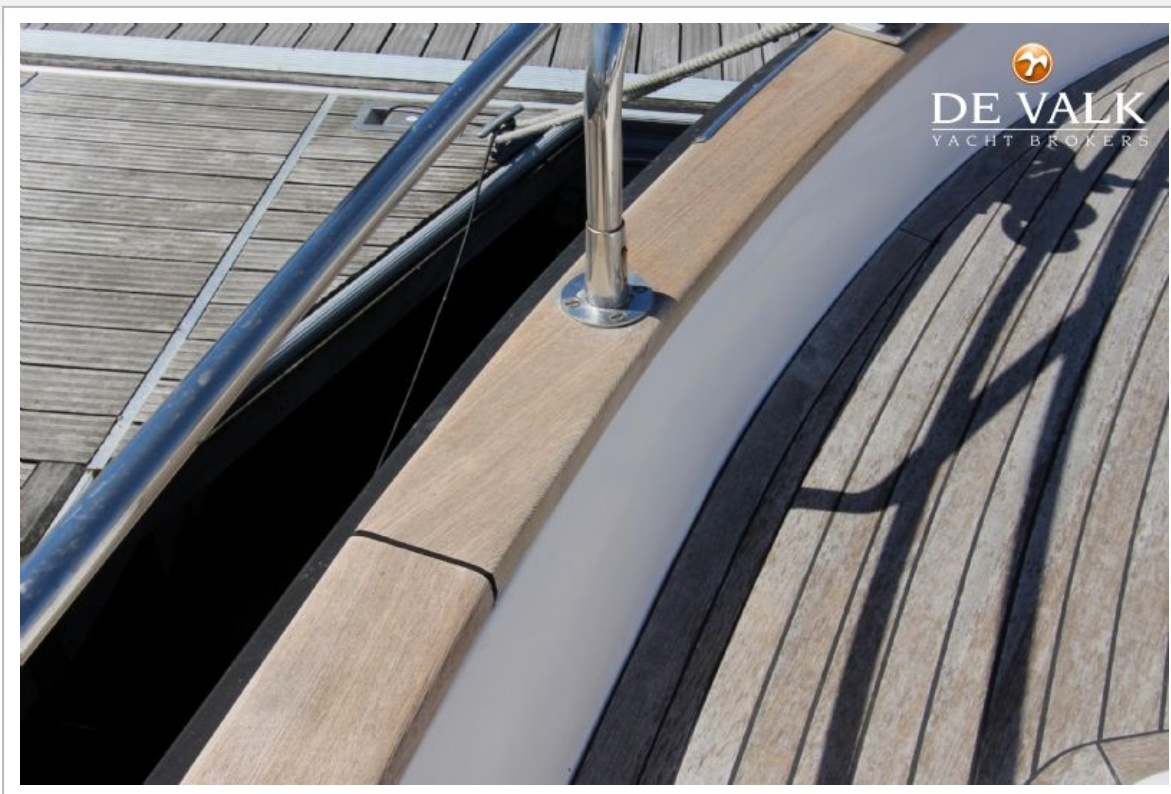


## AQUASTAR 43 AFT CABIN

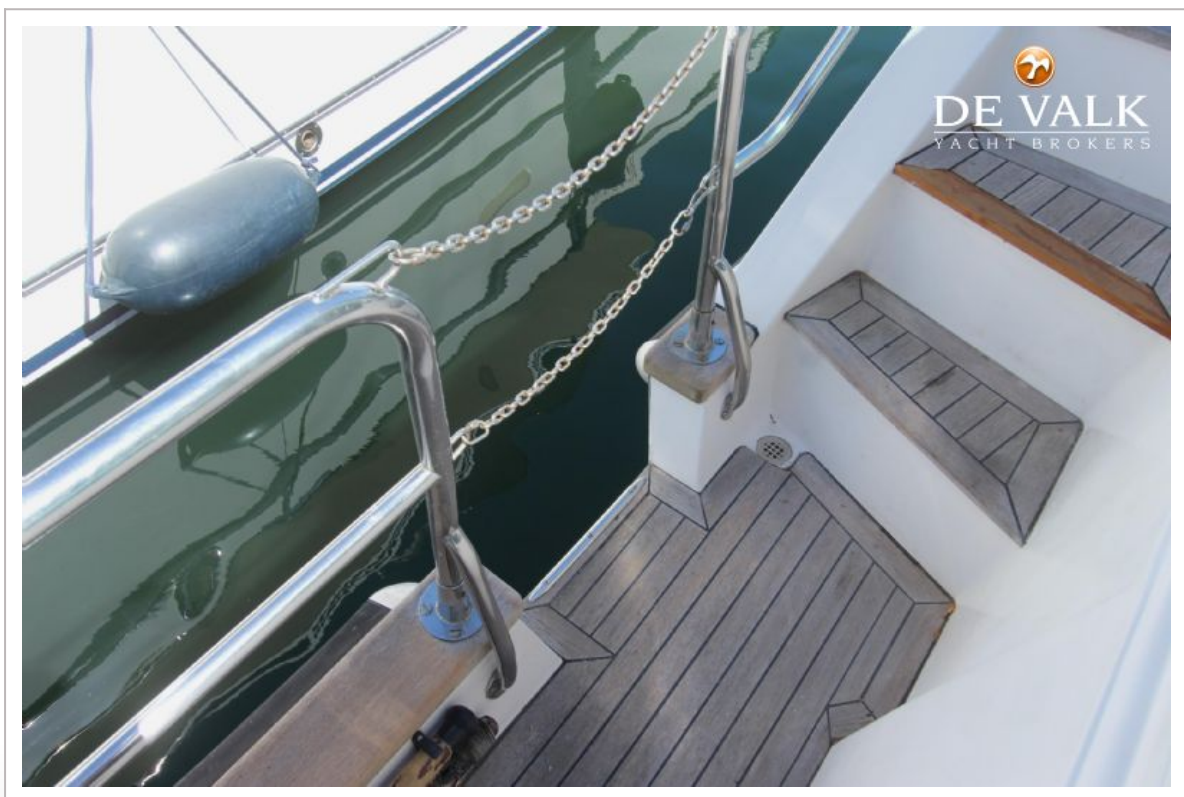




## AQUASTAR 43 AFT CABIN



# AQUASTAR 43 AFT CABIN





## AQUASTAR 43 AFT CABIN





## AQUASTAR 43 AFT CABIN





# AQUASTAR 43 AFT CABIN

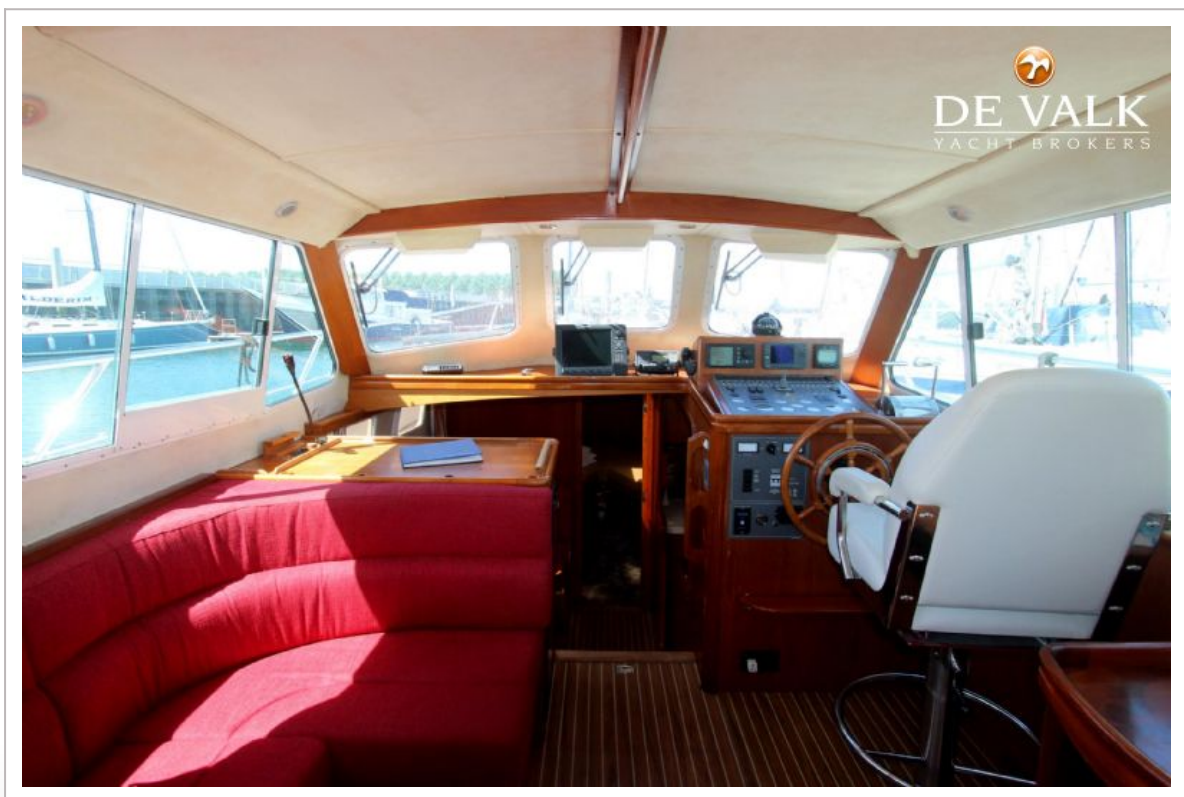


## AQUASTAR 43 AFT CABIN





## AQUASTAR 43 AFT CABIN



## AQUASTAR 43 AFT CABIN





## AQUASTAR 43 AFT CABIN

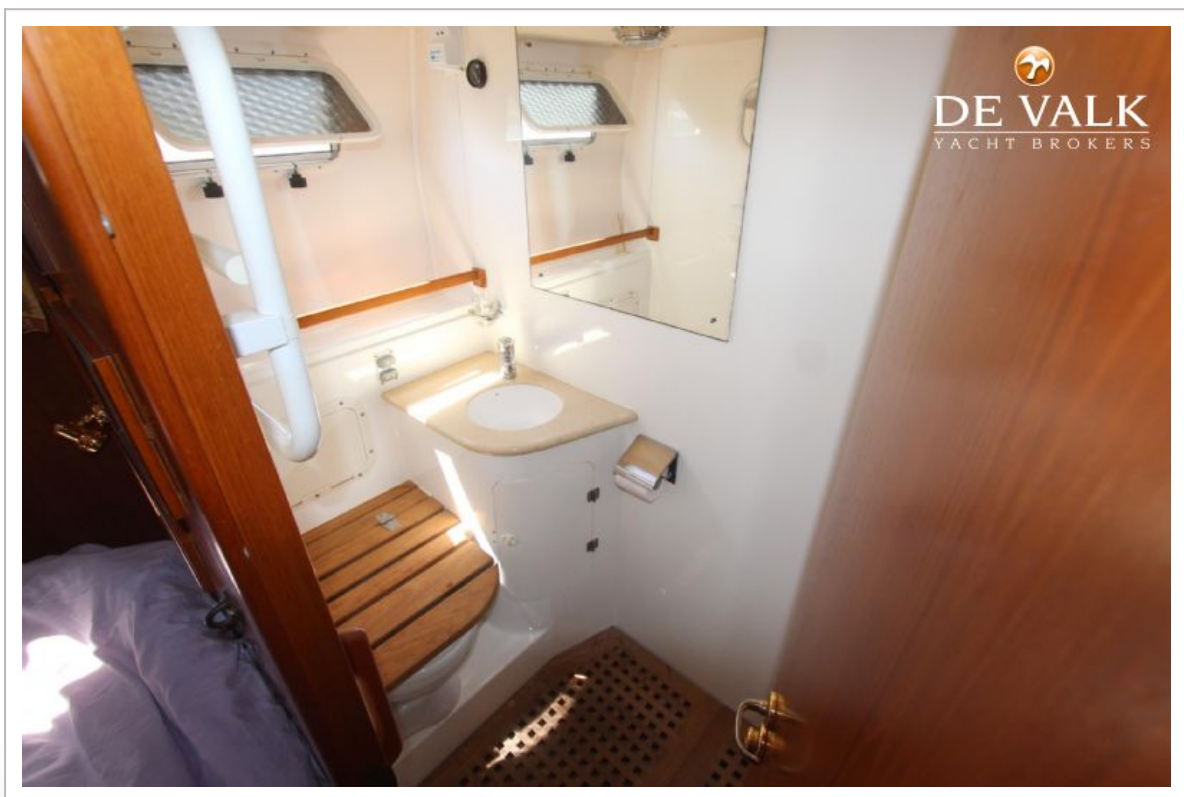
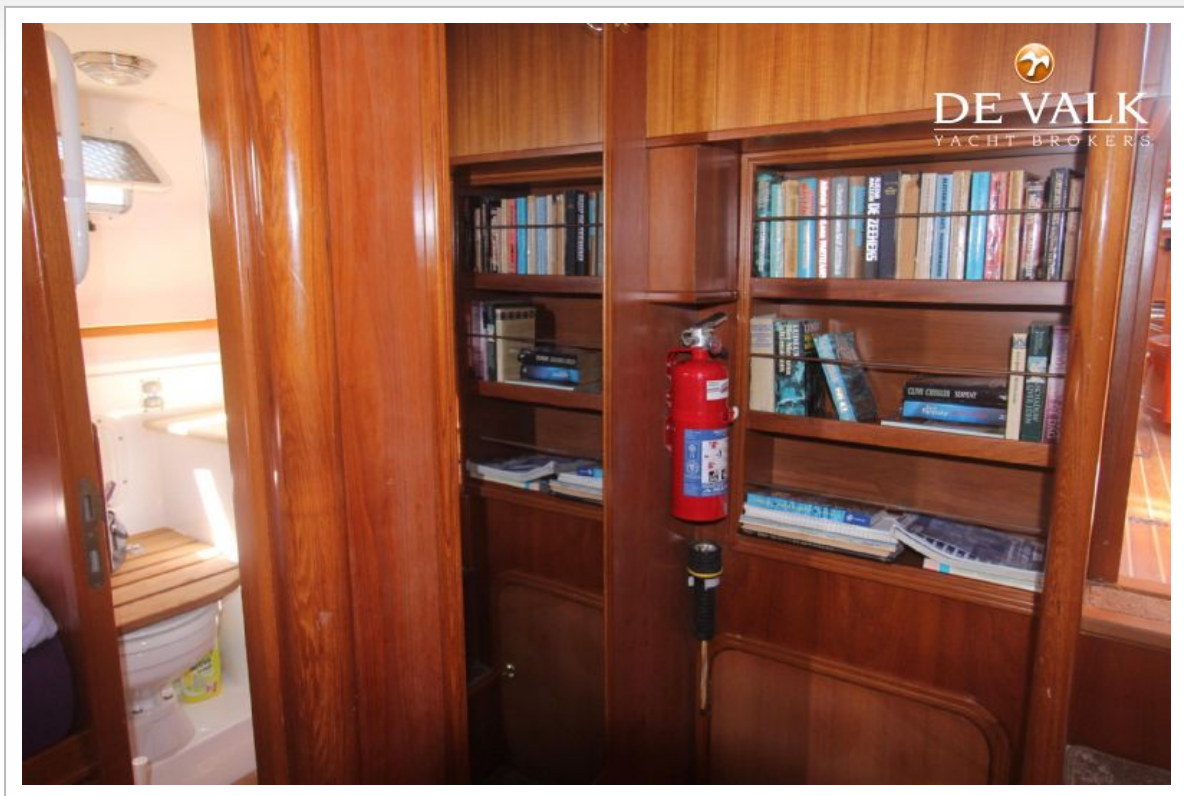


## AQUASTAR 43 AFT CABIN

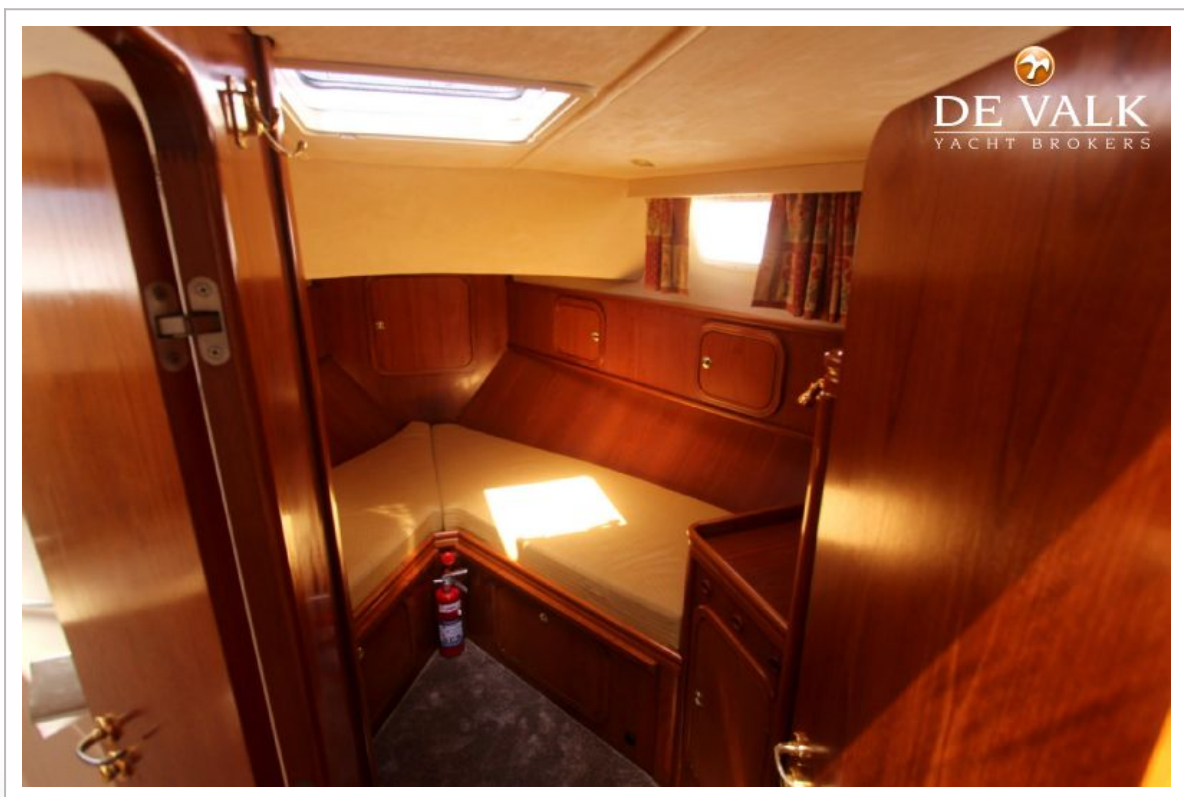
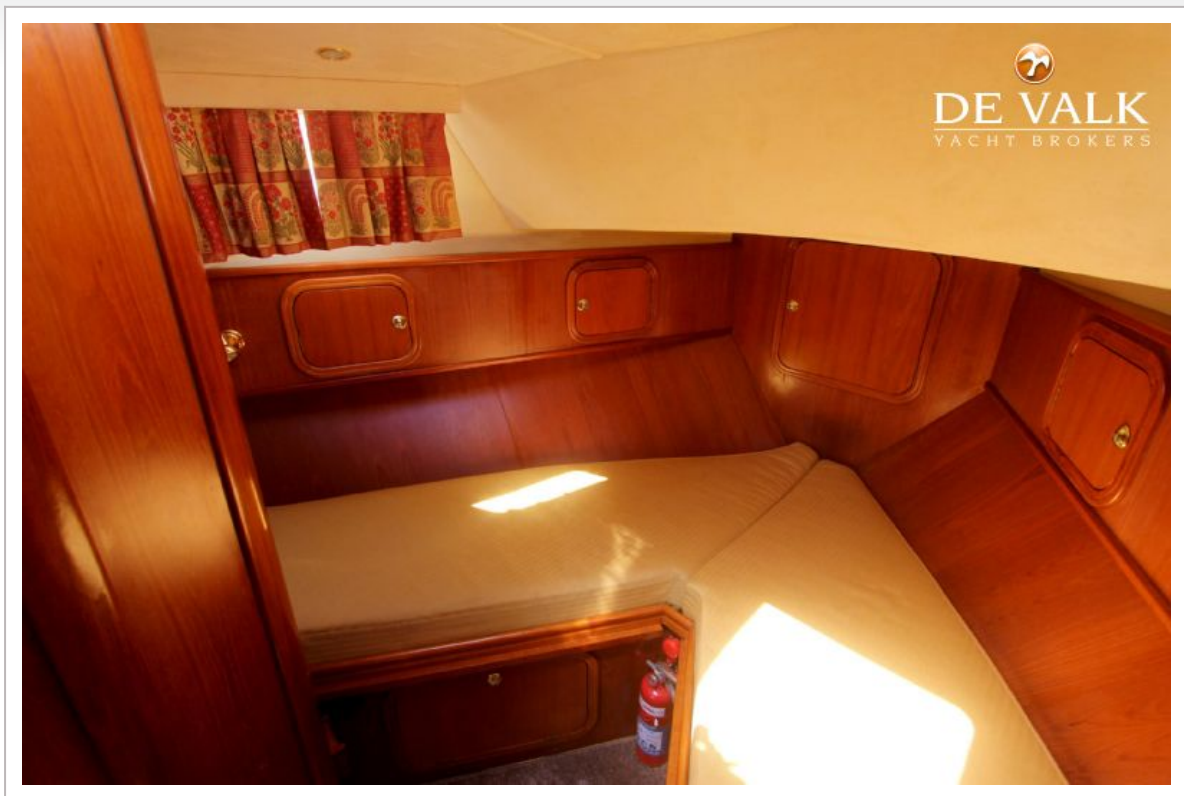




## AQUASTAR 43 AFT CABIN

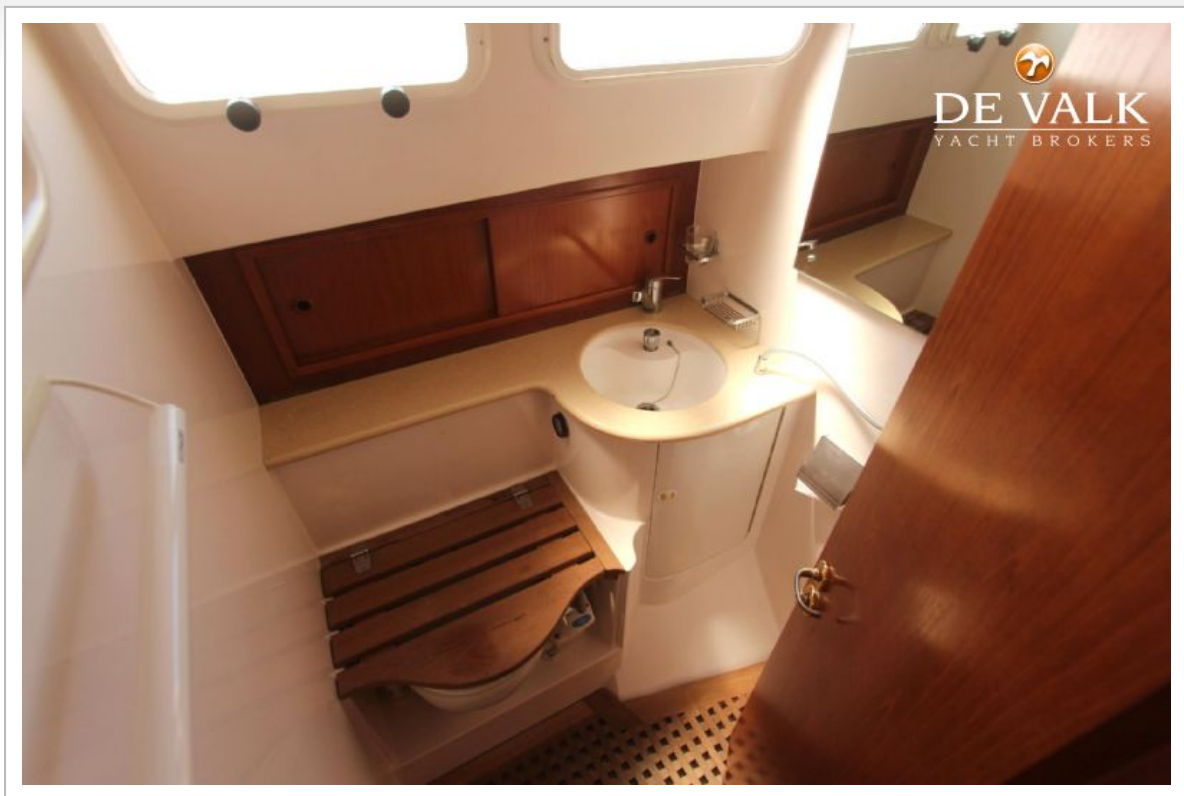


## AQUASTAR 43 AFT CABIN





## AQUASTAR 43 AFT CABIN

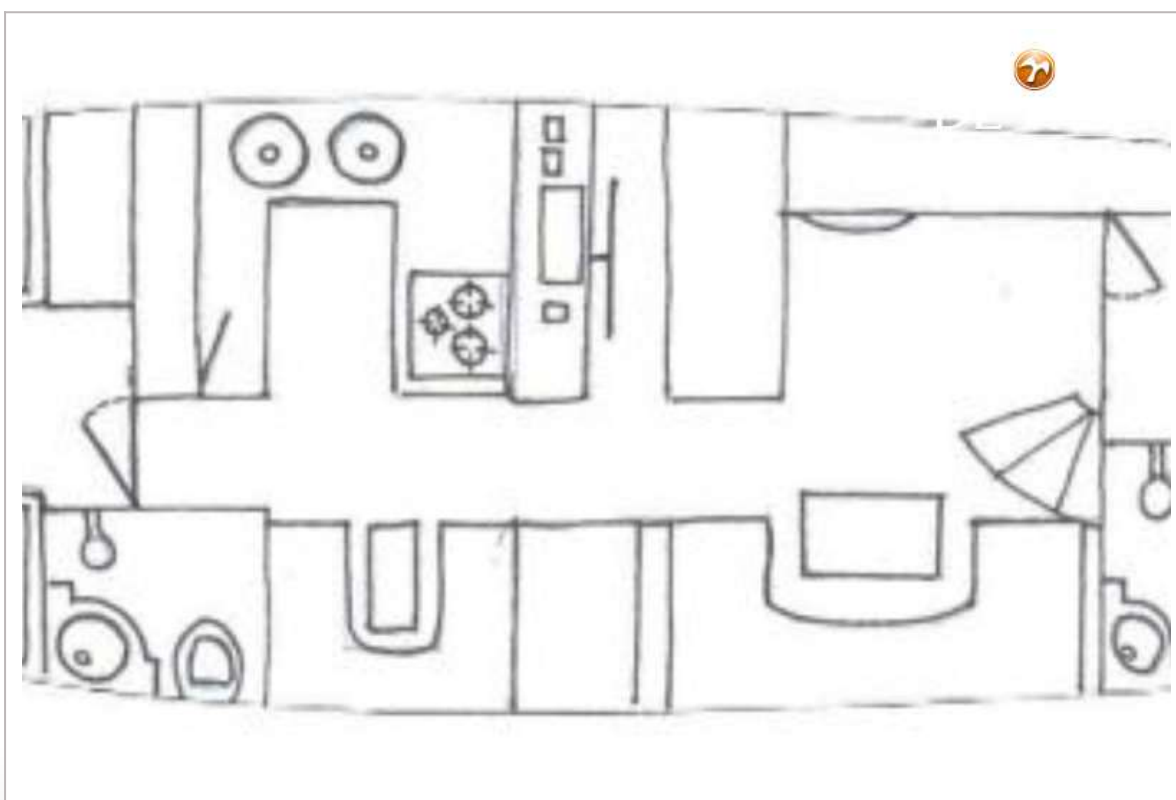


## AQUASTAR 43 AFT CABIN





# AQUASTAR 43 AFT CABIN



## AQUASTAR 43 AFT CABIN





## AQUASTAR 43 AFT CABIN



## AQUASTAR 43 AFT CABIN

