



DE VALK  
YACHT BROKERS



TAK KRUISER 1160 OK



DE VALK  
YACHT BROKERS

# TAK KRUISER 1160 OK

## BROKER'S COMMENTS

Practical and very well maintained open cockpit motor yacht from the well known shipyard Tak Jachtbouw. She has been nicely finished and has an open layout. That results in a light and roomy atmosphere with lots of possibilities. On deck you will find that she is easily accessible from the dock because she has a transom-door and side-gates in the sea railing. You can safely move around on deck because of her sturdy sea railing and wide deck space. Lots of opening windows and portholes for optimal ventilation.

*Marc Weijenberg*

## SPECIFICATIONS

<b>Dimensions</b>	11.60 x 3.65 x 1.10 (m)	<b>Builder</b>	Tak Jachtbouw, Raamsdonksveer
<b>Built</b>	1990	<b>Cabins</b>	1
<b>Material</b>	Steel	<b>Berths</b>	6
<b>Engine(s)</b>	1 x Daf 575 diesel	<b>Hp/Kw</b>	120.00 (hp), 88.20 (kw)
<b>Asking price</b>	sold (VAT )	<b>Lying</b>	at sales office

## CONTACT

<b>Sales office</b>	De Valk Sint Annaland	<b>Telephone</b>	+31 166 601 000
<b>Address</b>	Koelhuisweg 4 4697 RM Sint Annaland The Netherlands	<b>E-mail</b>	sintannaland@devalk.nl

## DISCLAIMER

These particulars are given in good faith as supplied but cannot be guaranteed.



# TAK KRUISER 1160 OK

## GENERAL

<b>Model</b>	TAK KRUISER 1160 OK
<b>Type</b>	motor yacht
<b>LOA (m)</b>	11,60
<b>Beam (m)</b>	3,65
<b>Draft (m)</b>	1,10
<b>Air draft (m)</b>	2,80
<b>Headroom (m)</b>	1,96
<b>Year built</b>	1990
<b>Builder</b>	Tak Jachtbouw, Raamsdonksveer
<b>Country</b>	The Netherlands
<b>Designer</b>	Tak Jachtbouw
<b>Displacement (t)</b>	11
<b>Hull material</b>	steel
<b>Hull colour</b>	blue
<b>Hull shape</b>	hard chine
<b>Keel type</b>	long keel
<b>Superstructure material</b>	steel
<b>Rubbing strake</b>	stainless steel
<b>Deck material</b>	steel
<b>Deck finish</b>	anti-slip paint
<b>Cockpit deck finish</b>	teak
<b>Dorades</b>	stainless steel 2 x
<b>Window frame</b>	aluminium
<b>Window material</b>	tempered glass
<b>Deckhatch</b>	yes
<b>Portholes</b>	aluminium
<b>Insulation</b>	rockwool
<b>Fuel tank (litre)</b>	steel 2 x 300 ltr
<b>Freshwater tank (litre)</b>	stainless steel 1 x 500 ltr
<b>Blackwater tank (litre)</b>	stainless steel 1 x 180 ltr



# TAK KRUISER 1160 OK

<b>Blackwater tank extraction</b>	deck extraction + pump
<b>Wheel steering</b>	mechanical
<b>Tiller</b>	extra electric steering
<b>More info on paintwork</b>	Hull, deck and superstructures painted in 2010

## ACCOMMODATION

<b>Cabins</b>	1
<b>Berths</b>	2 (+2 +2) 6
<b>Interior</b>	teak
<b>Floor</b>	parquet
<b>Open cockpit</b>	yes
<b>Pilot house/deck saloon</b>	yes
<b>Headroom saloon (m)</b>	1,96
<b>Heating</b>	diesel ducted hot air Webasto Airtop 5000
<b>Dinette to convert into berth</b>	with a small alteration (1,90 x 1,26 m)
<b>Convertible berth</b>	in pilothouse/decksalon (1,90 x 1,25 m)
<b>Opening door to cockpit</b>	4 x folding doors
<b>Galley</b>	yes
<b>Countertop</b>	plastic
<b>Sink</b>	stainless steel
<b>Cooker</b>	calor gas 4 burner/pits
<b>Extractor</b>	yes
<b>Gas alarm</b>	Vetus (defect)
<b>Fridge</b>	Electrolux 24v
<b>Hot water system</b>	220V + engine
<b>Water pressure system</b>	electrical
<b>Owners cabin</b>	v-bed
<b>Bed length (m)</b>	2,00 x 0,77
<b>Wardrobe</b>	shelves
<b>Bathroom</b>	shared 1 x
<b>Toilet</b>	Jabsco



# TAK KRUISER 1160 OK

Toilet system	electric
Wash basin	in the bathroom

## MACHINERY

No of engines	1
Make	Daf
Type	575
HP	120,00
kW	88,20
Fuel	diesel
Year installed	1990
Maximum speed (kn)	7,5
Cruising speed (kn)	6,5
Consumption (l/hr)	5
Engine hours	930
Engine cooling system	freshwater heat exchanger
Drive	shaft
Engine controls	bowden cable
Gearbox	hydraulic
Bowthruster	electric 24v
Propeller type	fixed
Propeller blades	4
Propeller shaft material	stainless steel
Shaft lubrication	grease
Electrical installation	24/220v
Start battery	2 x 230 amp
Service battery	2 x 230 amp
Battery charger/inverter	Vetus 600 watt
Solar panel	2 x
Shorepower	with cable



## NAVIGATION

Compass	Plastimo Offshore
Depth sounder	Vetus combi
Log	Vetus combi
VHF	Northstar Explorer 710
Rudder angle indicator	yes

## EQUIPMENT

Cockpit cover	with fixed roof
Bathing platform	yes
Boarding ladder	stainless steel
Transom door	yes
Anchor	Pool
Other ground tackle	spare anchor with line
Windlass	manual Vetus
Davits	stainless steel
Sea railing	stainless steel
Grab rail (superstructure)	stainless steel
Railing side opening gates	yes
Pushpit	yes
Pulpit	yes
Lifejackets	2 x
Lifebuoy	1 x
Wiper	2 x
Horn	air pressure
Fenders	yes
Mooring lines	yes
TV	no receiver Samsung
Radio-cd player	yes
Speakers in salon	yes
Clock - barometer	yes



## Fire extinguisher

2 x

## Extra info

The large open cockpit aft is at the same level as the salon and with four opening doors a part of the living area if you want it to be. The cockpit also houses ample storage compartments. The engine room is tidy and clean. She has not been used much and predominantly on the inland waterways. The dinette can be transferred into an extra double berth. Together with the convertible sofa in the salon, she sleeps six persons.



# TAK KRUISER 1160 OK





# TAK KRUISER 1160 OK



# TAK KRUISER 1160 OK



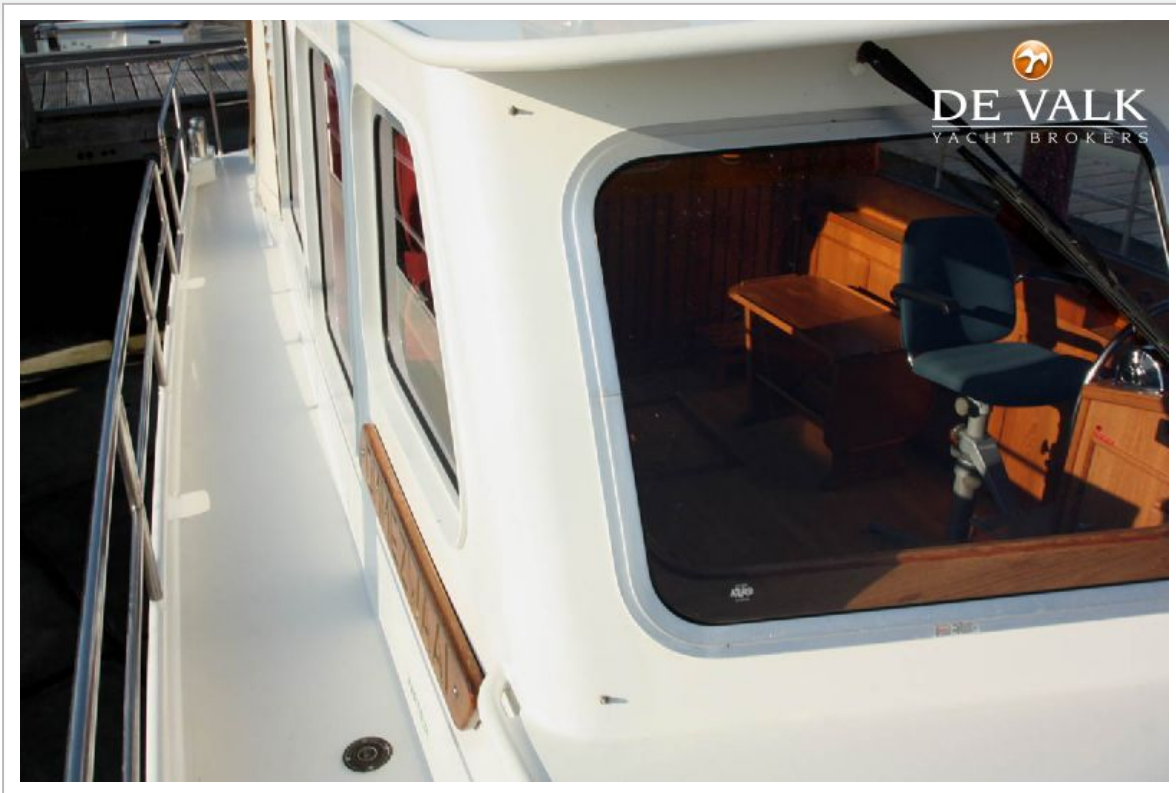
# TAK KRUISER 1160 OK



# TAK KRUISER 1160 OK



# TAK KRUISER 1160 OK



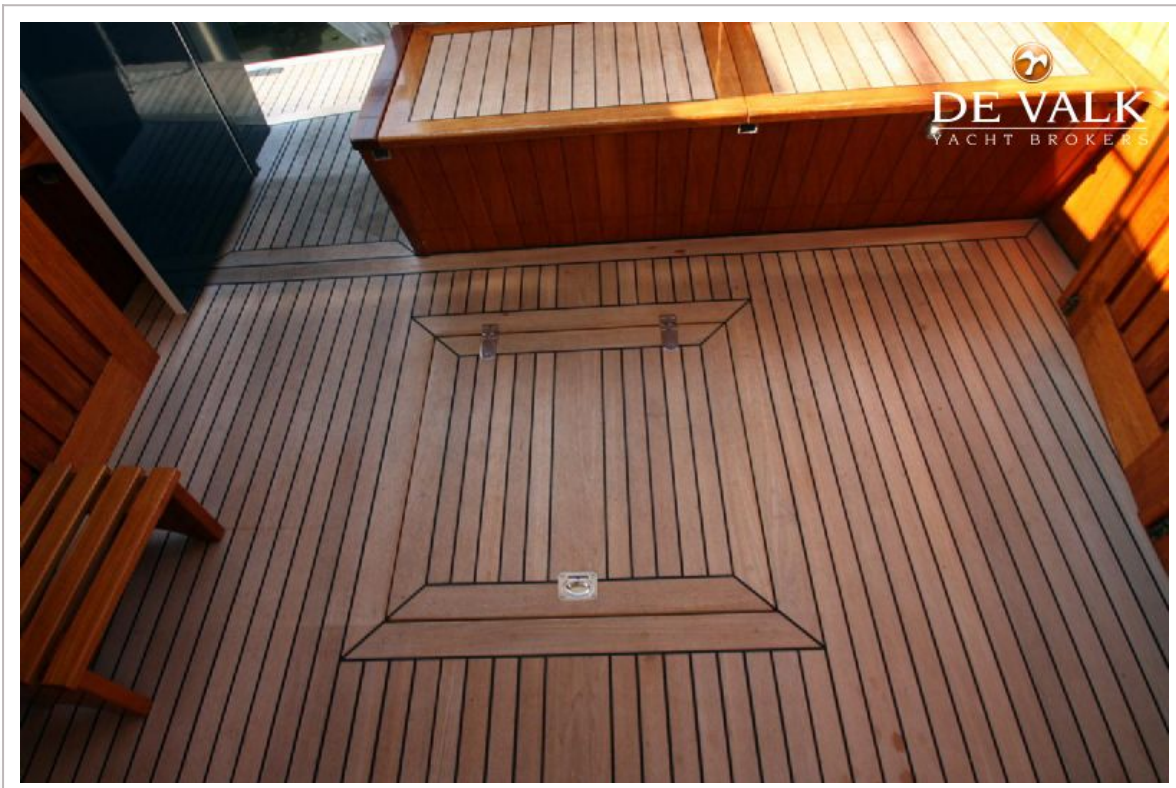
# TAK KRUISER 1160 OK



# TAK KRUISER 1160 OK



# TAK KRUISER 1160 OK

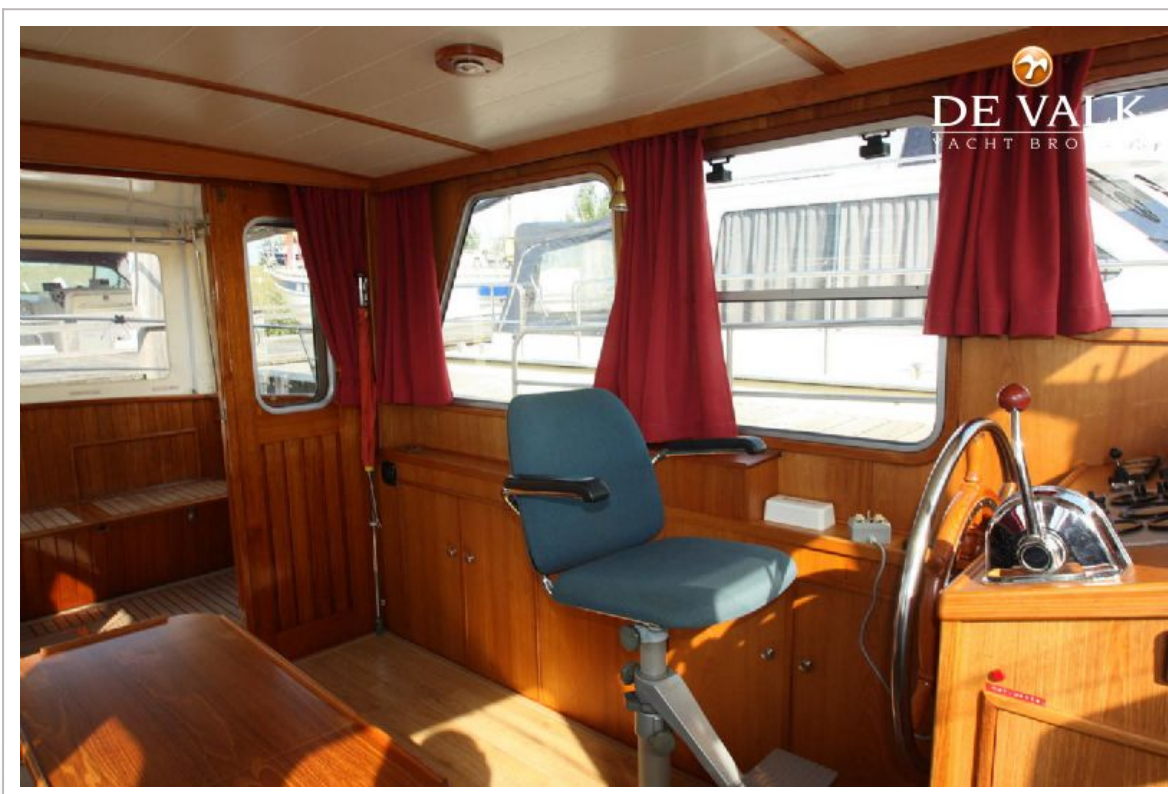
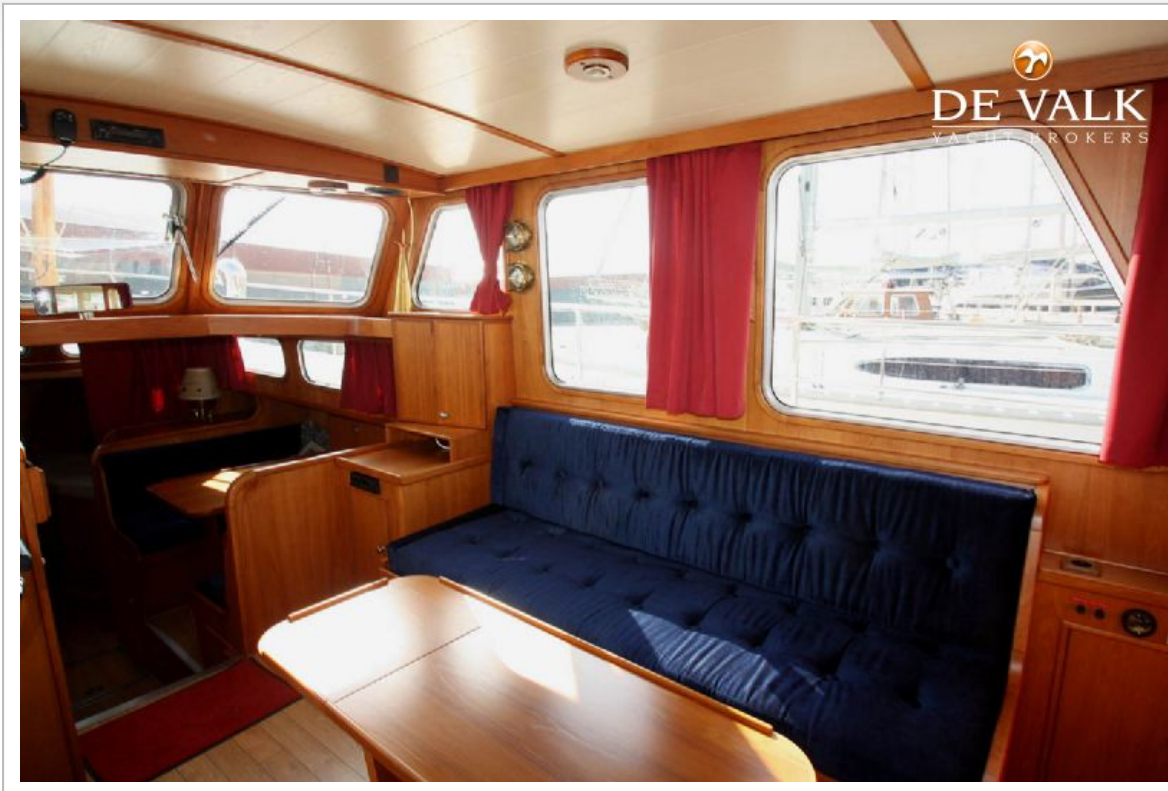




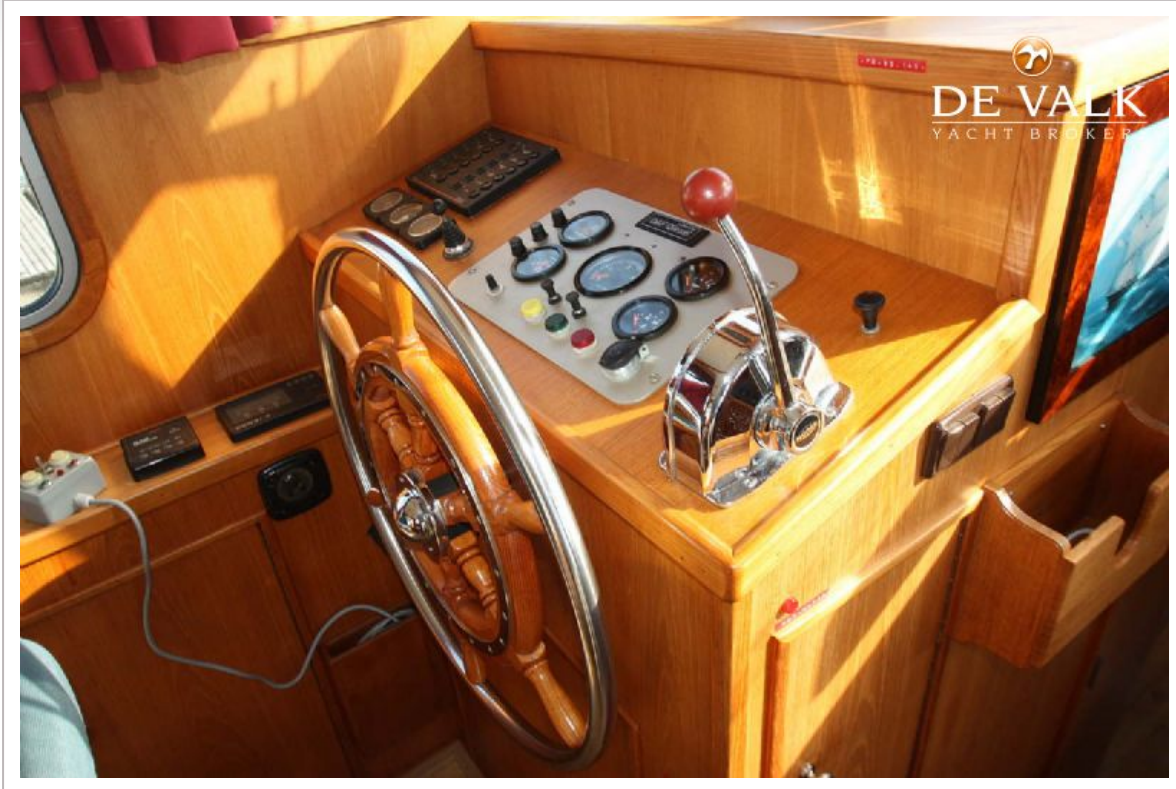
# TAK KRUISER 1160 OK



# TAK KRUISER 1160 OK



# TAK KRUISER 1160 OK



# TAK KRUISER 1160 OK



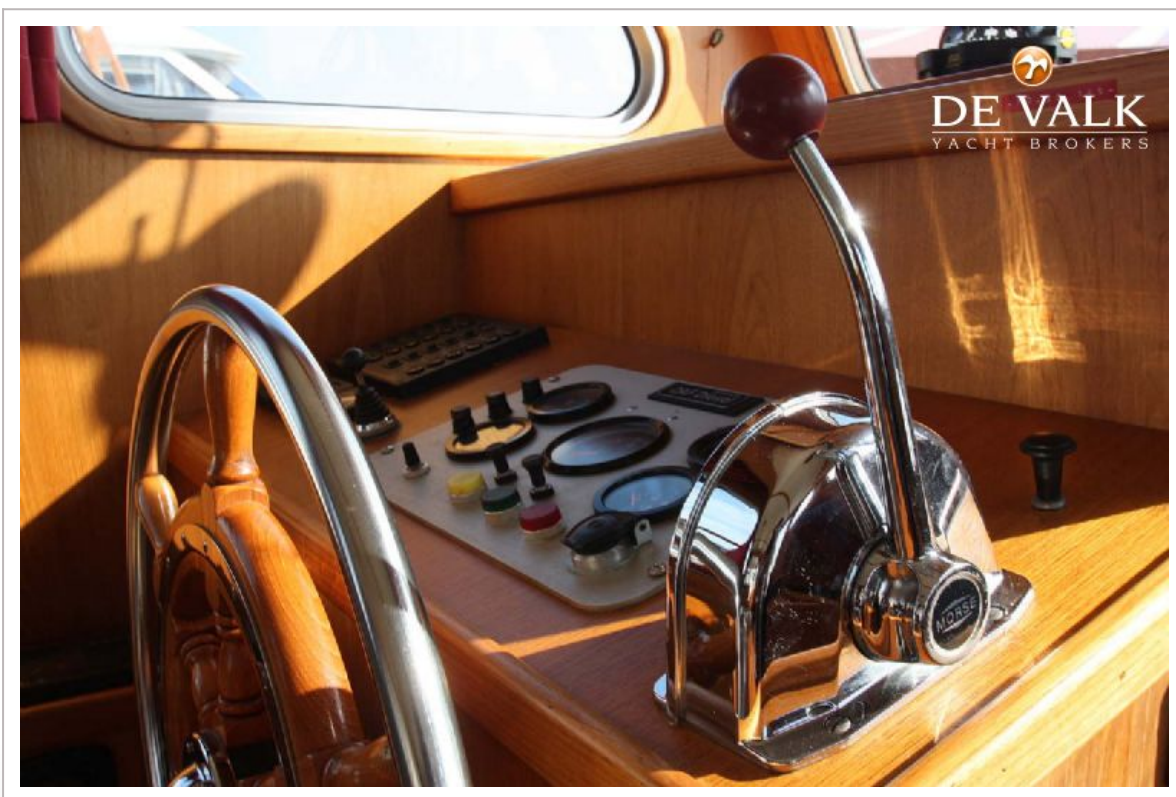
# TAK KRUISER 1160 OK



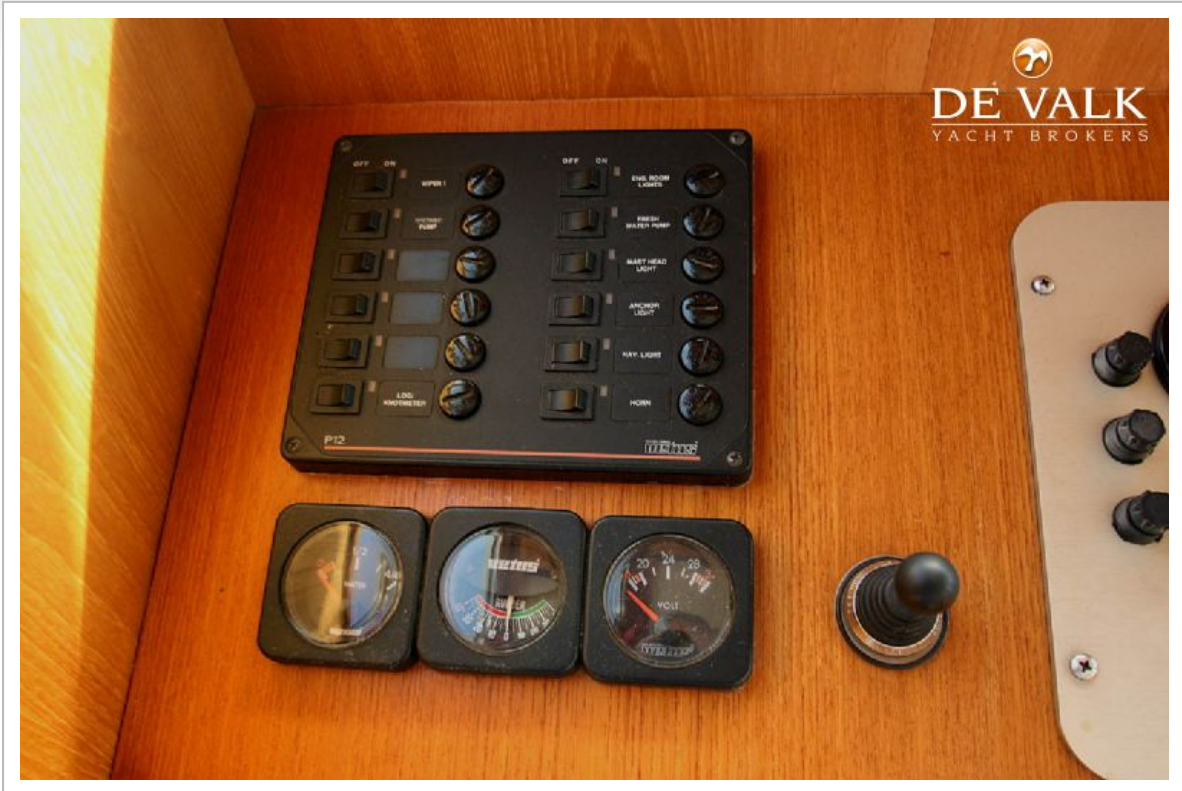
# TAK KRUISER 1160 OK



# TAK KRUISER 1160 OK

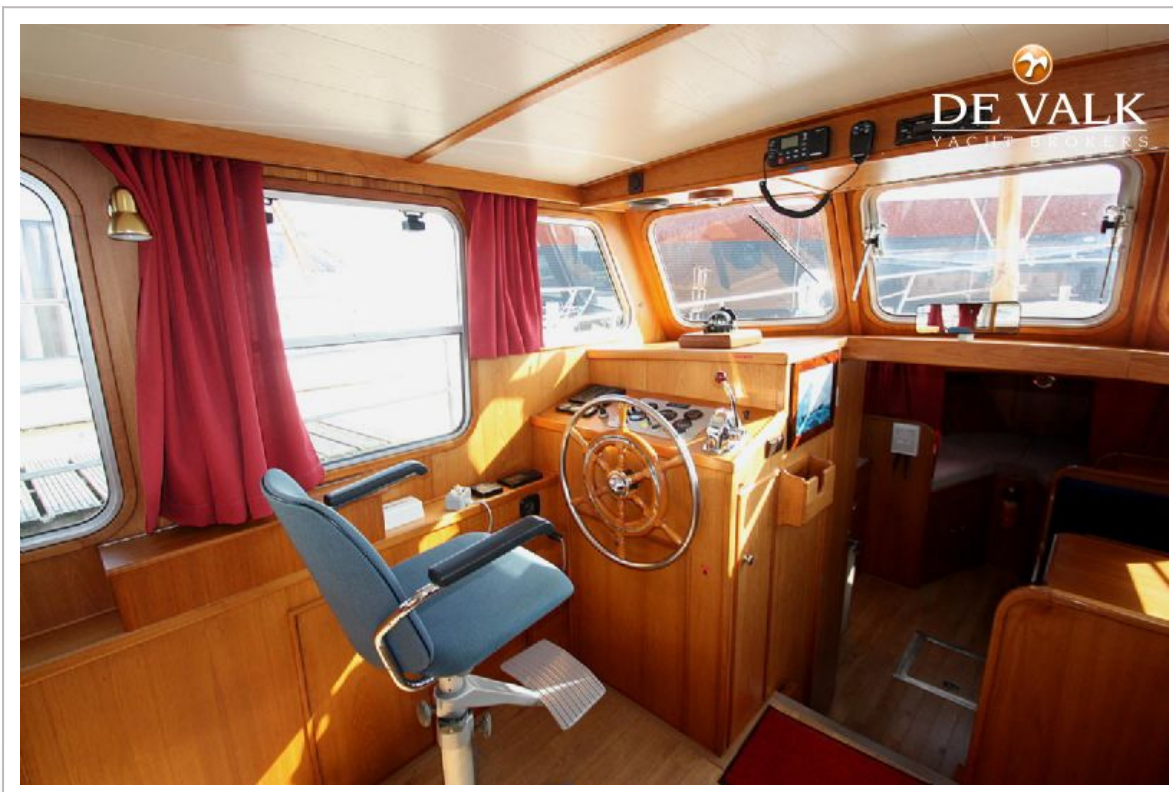
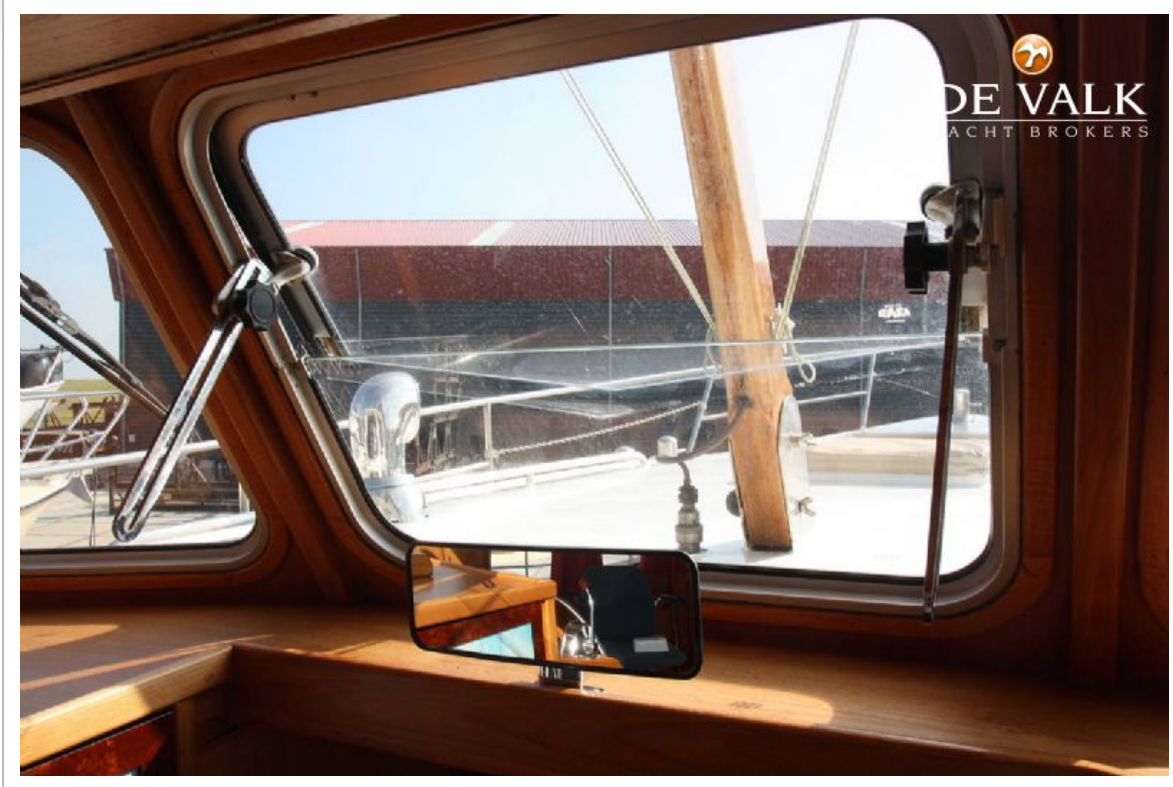


# TAK KRUISER 1160 OK





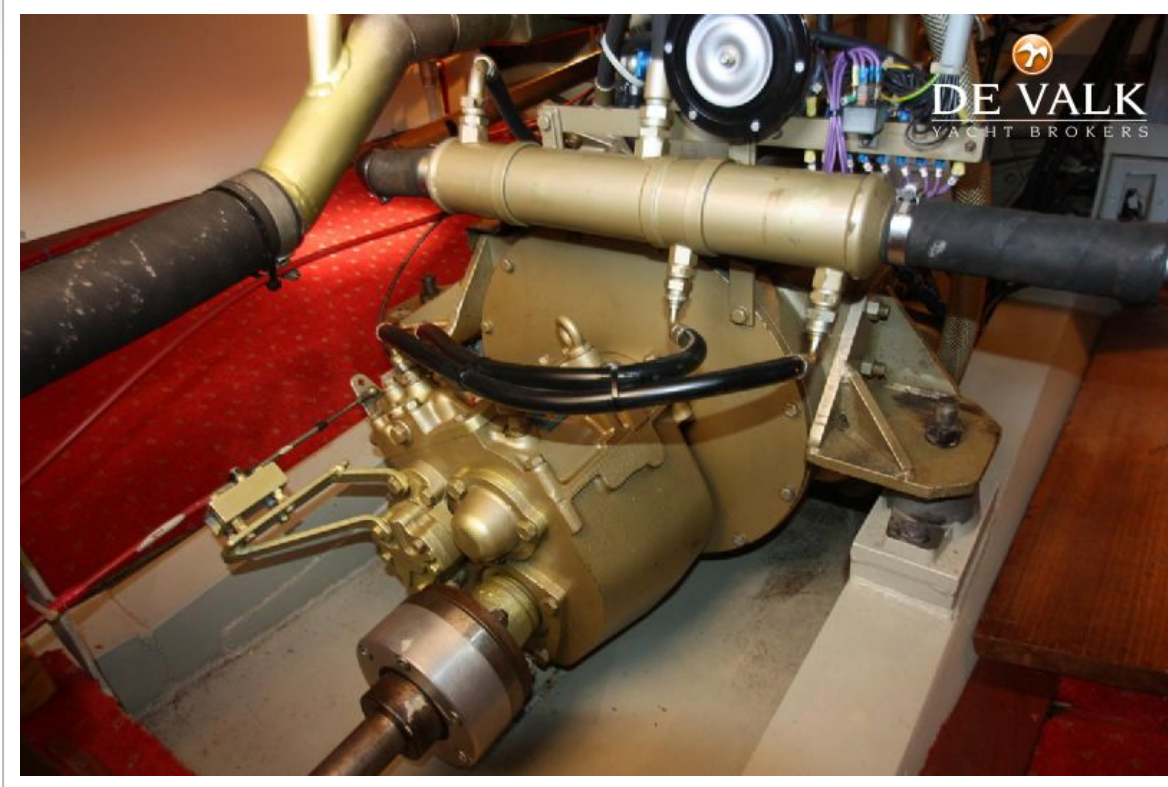
# TAK KRUISER 1160 OK



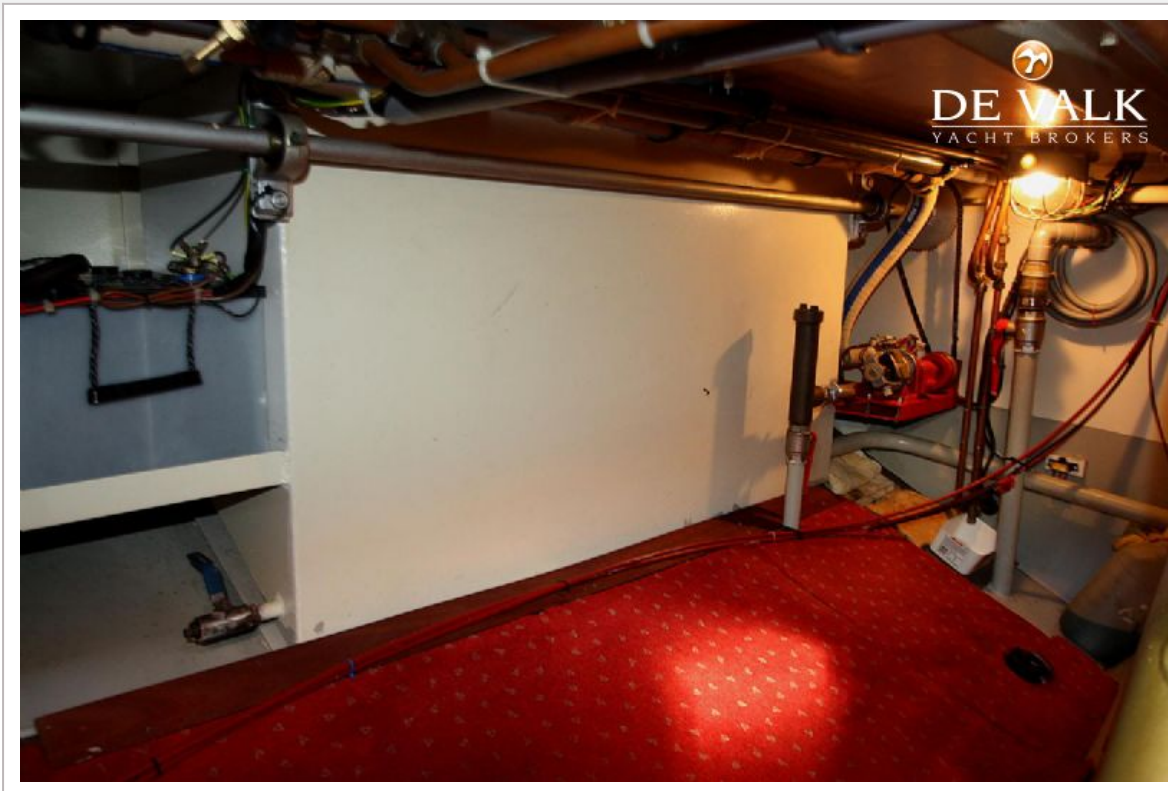
# TAK KRUISER 1160 OK



# TAK KRUISER 1160 OK



# TAK KRUISER 1160 OK



# TAK KRUISER 1160 OK

  
DE VALK  
YACHT BROKERS

