



DE VALK
YACHT BROKERS



JEANNEAU SUN ODYSSEY 39I



DE VALK
YACHT BROKERS

JEANNEAU SUN ODYSSEY 39i

BROKER'S COMMENTS

The famous Sun Odyssey range combines form, function, design and performance all into one. From her sleek lines with inset windows and plumb bow, this 39i is a very stylish yacht. With the twin steering wheel cockpit, the access from the dock onboard is very easy. Down below ample accommodations with nice woodwork details and stowage space. She is comes well equipped and maintained. Only been used for private sailing.

Marc Weijenberg

SPECIFICATIONS

Dimensions	11.86 x 3.88 x 2.00 (m)	Builder	Jeanneau SA
Built	2008	Cabins	3
Material	GRP	Berths	8
Engine(s)	1 x Yanmar 3JH4 diesel	Hp/Kw	40.00 (hp), 29.40 (kw)
Asking price	sold (VAT)	Lying	at sales office

CONTACT

Sales office	De Valk Sint Annaland B.V.	Telephone	+31 (0)166 601 000
Address	Koelhuisweg 4 4697 RM Sint Annaland NL	E-mail	sintannaland@devalk.nl

DISCLAIMER

These particulars are given in good faith as supplied but cannot be guaranteed.



GENERAL

Model	JEANNEAU SUN ODYSSEY 39I
Type	sailing yacht
LOA (m)	11,86
LWL (m)	10,71
Beam (m)	3,88
Draft (m)	2,00
Air draft (m)	17,40
Headroom (m)	1,98
Year built	2008
Builder	Jeanneau SA
Country	France
Designer	Marc Lombard & Jeanneau Design
Displacement (t)	7,5
Ballast (tonnes)	cast iron 2,45
CE norm	A
Hull material	GRP
Hull colour	white
Hull shape	roundbilged
Keel type	bulb keel
Superstructure material	GRP
Deck material	GRP
Deck finish	moulded in
Cockpit deck finish	teak
Window material	polycarbonate
Portholes	aluminum
Fuel tank (litre)	polyethylene 130
Freshwater tank (litre)	polyethylene 355 in 2 tanks
Blackwater tank (litre)	polyethylene 80
Blackwater tank extraction	deck extraction
Wheel steering	cable steering 2 x Lewmar



Emergency tiller	yes
Extra info	Rubbingstrake with stainless strip Extra cleats amidships Steeringwheel covers Sliding covers/gauzes for deckhatches Railing spraysails

ACCOMMODATION

Cabins	3
Berths	8
Interior	cherry
Floor	teak and holly
Saloon	with U-shaped settee
Headroom saloon (m)	1,95/2,00
Heating	diesel ducted hot air Webasto Airtop 3500
Chart table	sliding with seat
Dinette	yes
Galley	yes
Countertop	plastic
Sink	stainless steel
Cooker	Eno two burner
Oven	Eno
Fridge	with freezer compartment Vitrifrigo
Hot water system	220V + engine
Water pressure system	electrical
Manual and/or foot pump	salt water tap
Owners cabin	double bed
Bed length (m)	2,20 x 1,80
Wardrobe	hanging and drawers
Guest cabin 1	double bed
Bed length (m)	2,00 x 1,55
Wardrobe	hanging
Guest cabin 2	double bed
Bed length (m)	2,00 x 1,55



Wardrobe	hanging
Toilet	shared
Toilet system	manual
Wash basin	in the bathroom
Shower	shared
Extra info	bathroom with extra ventilation
Extra info	Ambiance Jaguar skai upholstery

MACHINERY

No of engines	1
Make	Yanmar
Type	3JH4
HP	40,00
kW	29,40
Fuel	diesel
Year installed	2008
Maximum speed (kn)	7,5
Cruising speed (kn)	6,5
Consumption (l/hr)	3,5
Engine hours	450
Engine cooling system	freshwater heat exchanger
Drive	shaft
Engine controls	bowden cable
Gearbox	mechanical
Exhaust	watercooled
Propeller type	fixed + ropecutter
Propeller blades	3
Propeller shaft material	stainless steel
Shaft lubrication	water
Manual bilge pump	yes
Electric bilge pump	yes



Start battery	1 x 96amp
Service battery	3 x 96amp
Battery charger	Cristec 40amp
Shorepower	with cable

NAVIGATION

Compass	2 x Plastimo
Depth sounder	Raymarine ST60 Tridata
Log	Raymarine ST60 Tridata
Windset	Raymarine ST60
Repeater	yes
VHF	Silva S10
Autopilot	Raymarine ST6002
Rudder angle indicator	Via autopilot
GPS	yes
Plotter	cockpit mounted Lowrance HDS9M
AIS receiver	yes

EQUIPMENT

Sprayhood	with zip-out backpanels
Cockpit table	yes
Bathing platform	yes
Boarding ladder	stainless steel
Deck shower	hot + cold
Anchor	Type Brittany
Anchor chain	yes
Windlass	electrical Quick
Sea railing	stainless steel
Pushpit	yes
Pulpit	yes
Life raft	valise (or bag) Plastimo



Life raft (pers)	6
Last life raft survey	2008
Lifebuoy	yes
Radio-cd player	Kenwood

RIGGING

Rigging	sloop
Brand mast	Seldén
Material mast	aluminum
Spreaders	2
Mainsail	semi battened 80% Quantum Sails
Mainsail cover	+ Lazy Jacks
Battcars	yes
Genoa	with UV strip Quantum Sails approx. 110%
Genoa furler	Facnor
Genoa cover	yes
Reefing System	quick-one-line-reefing
Boomvang	mechanical
Genoa sheetwinches	2 x Harken 44AST
Halyard winches	2 x Harken 40AST
Spi-pole	aluminum On mast



JEANNEAU SUN ODYSSEY 39I



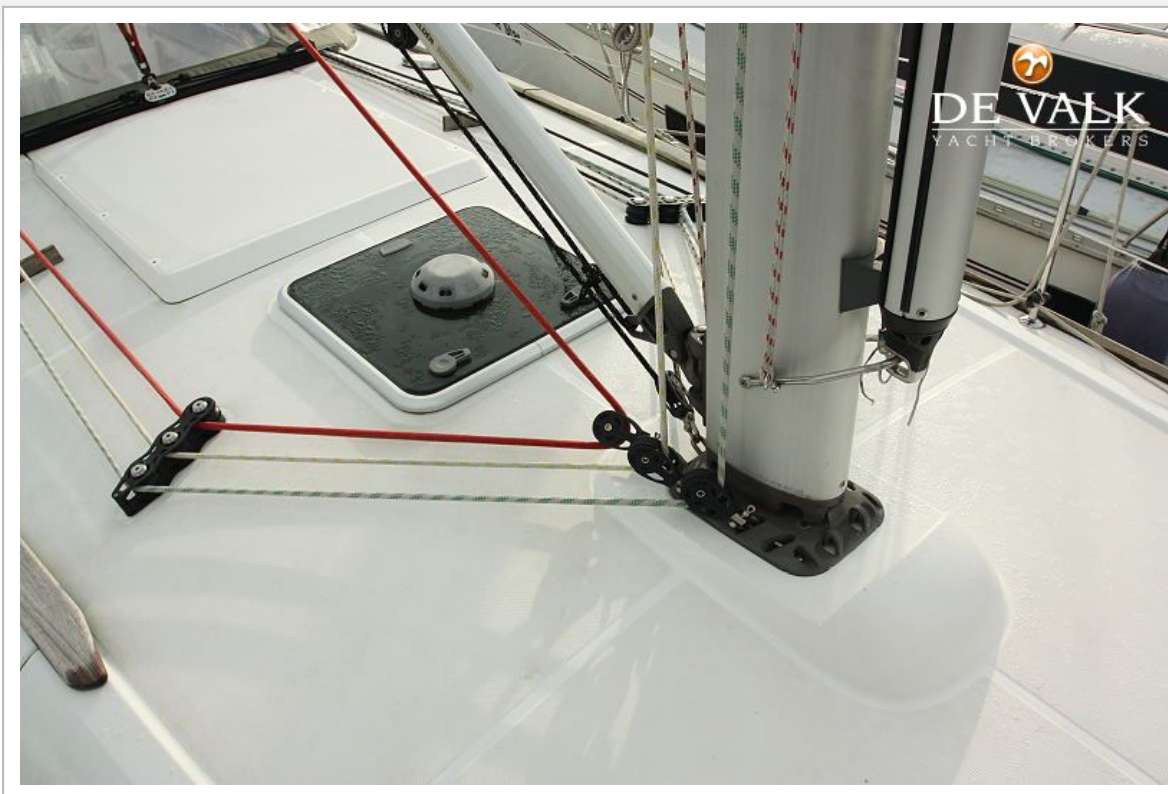
JEANNEAU SUN ODYSSEY 39I



JEANNEAU SUN ODYSSEY 39I



JEANNEAU SUN ODYSSEY 39I



JEANNEAU SUN ODYSSEY 39I



JEANNEAU SUN ODYSSEY 39I



JEANNEAU SUN ODYSSEY 39I



JEANNEAU SUN ODYSSEY 39I





JEANNEAU SUN ODYSSEY 39I

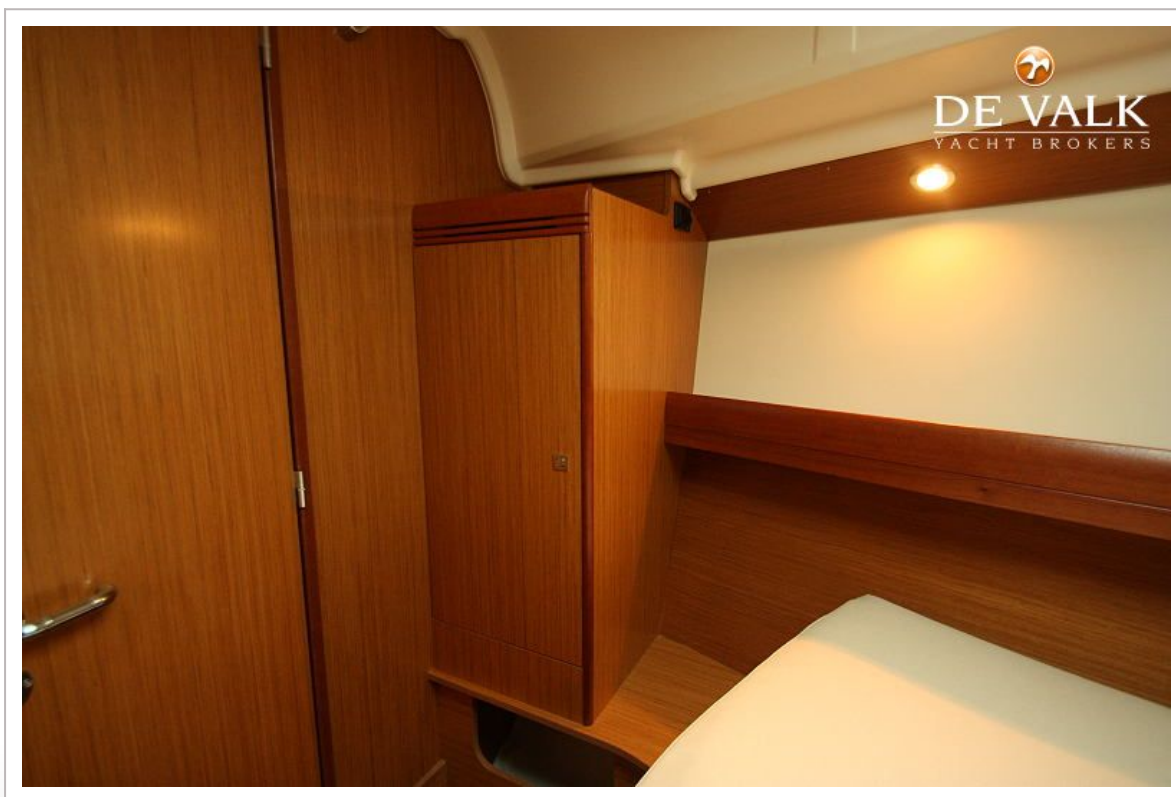


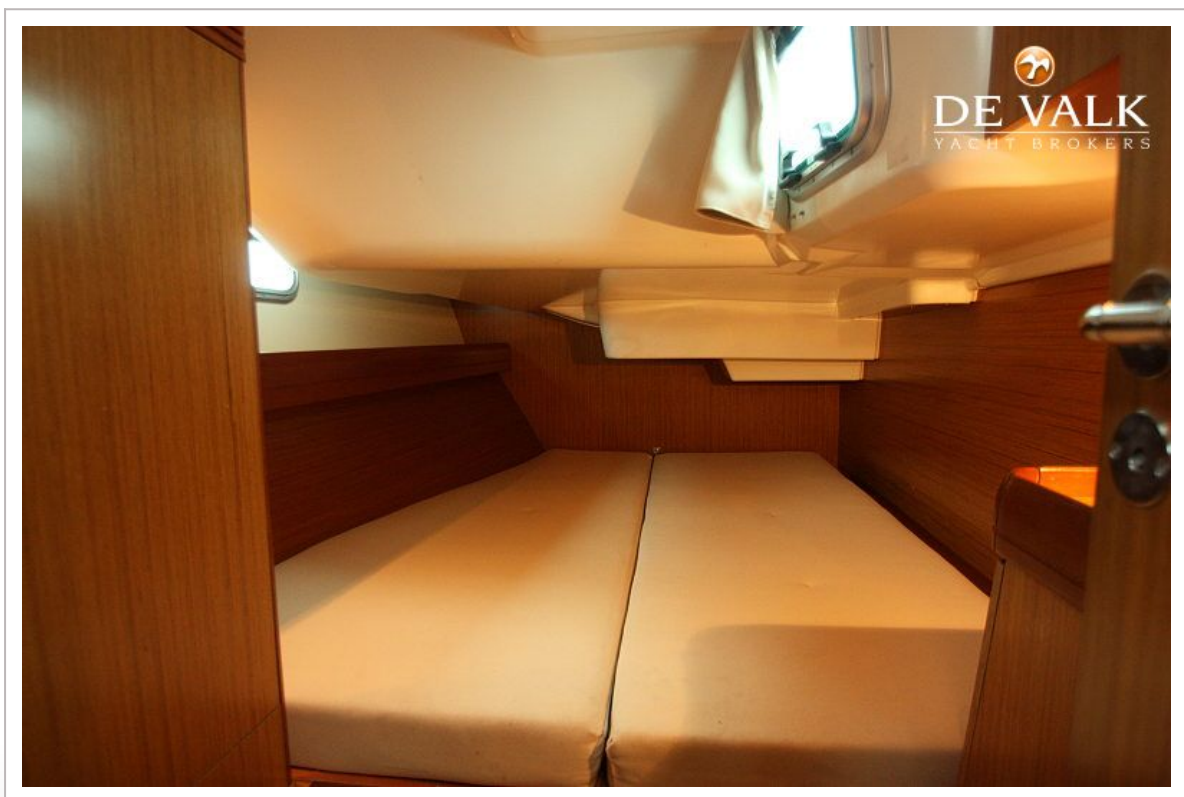
JEANNEAU SUN ODYSSEY 39I



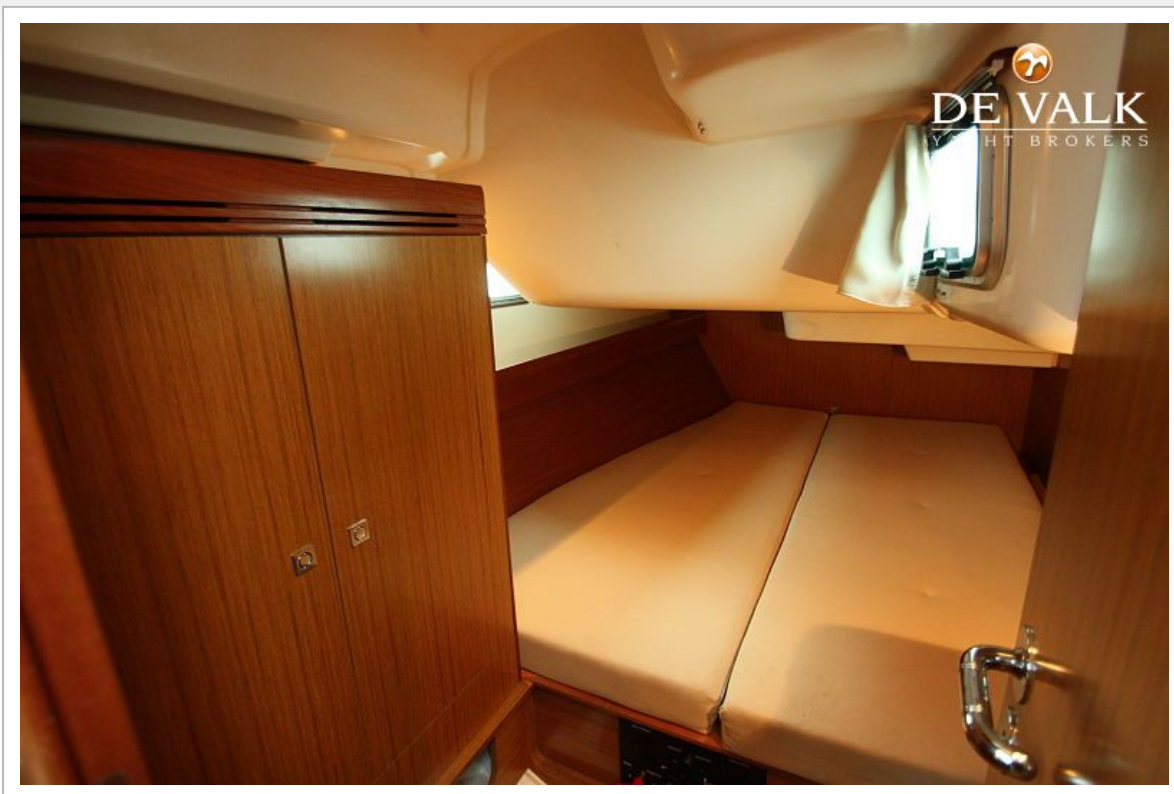
JEANNEAU SUN ODYSSEY 39I



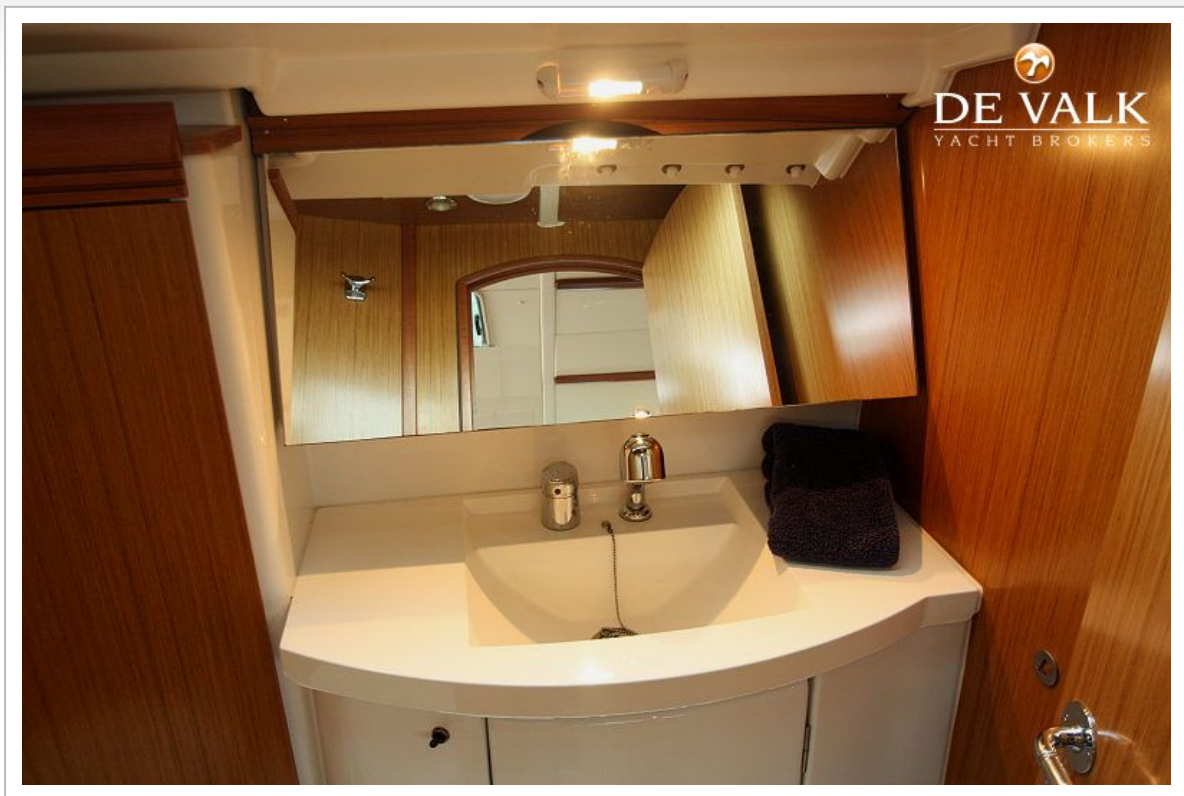




JEANNEAU SUN ODYSSEY 39I



JEANNEAU SUN ODYSSEY 39I



JEANNEAU SUN ODYSSEY 39I



JEANNEAU SUN ODYSSEY 39I



JEANNEAU SUN ODYSSEY 39i



JEANNEAU SUN ODYSSEY 39I

