



DE VALK  
YACHT BROKERS



## GRAND BANKS 32



DE VALK  
YACHT BROKERS

## BROKER'S COMMENTS

Popular motor yacht GRAND BANKS 32 SEDAN, built by American Marine - Singapore in 1978/1979 to a renowned John Bennett design, open cockpit, teak interior, forward lockable cabin with V-berth (with filler piece), up to 5 berths, galley with 3-burner propane stove, oven and new (2002) fridge. Easy handling motoryacht. Hydraulic bowthruster and windlass.

*Peter van Diggele*

## SPECIFICATIONS

<b>Dimensions</b>	9.73 x 3.40 x 1.13 (m)	<b>Builder</b>	American Marine- Singapore
<b>Built</b>	1979	<b>Cabins</b>	1
<b>Material</b>	GRP	<b>Berths</b>	5
<b>Engine(s)</b>	1 x Ford Lehman diesel	<b>Hp/Kw</b>	120.00 (hp), 88.20 (kw)
<b>Asking price</b>	sold (VAT )	<b>Lying</b>	contact Loosdrecht

## CONTACT

<b>Sales office</b>	De Valk Loosdrecht B.V.	<b>Telephone</b>	+31 (0)35 582 90 30
<b>Address</b>	't Breukeleveense Meentje 6 1231LM Loosdrecht / Wijdmeren NL	<b>E-mail</b>	loosdrecht@devalk.nl

## DISCLAIMER

These particulars are given in good faith as supplied but cannot be guaranteed.



## GENERAL

Model	GRAND BANKS 32
Type	motor yacht Motor yacht
LOA (m)	9,73
Beam (m)	3,40
Draft (m)	1,13
Air draft (m)	3,55
Year built	1979
Builder	American Marine- Singapore
Country	Singapore
Designer	John Bennett
Displacement (t)	7,7
Hull material	GRP
Hull colour	White
Hull shape	Deep-V
Keel type	Long Keel
Superstructure material	GRP
Rubbing strake	Stainless steel
Deck finish	Teak
Superstructure deck finish	Teak
Window frame	Wood
Window material	Toughened glass
Flybridge	yes
Mast can be lowered	Manual
Fuel tank (litre)	955
Level indicator (fuel tank)	yes
Freshwater tank (litre)	410
Wheel steering	Mechanical 2 x
Flybridge helm position	Mechanical

## ACCOMMODATION



Cabins	1
Berths	5
Interior	Teak
Floor	Parquett
Pilot house/deck saloon	saloon, steeringpostion, settee and galley
Headroom saloon (m)	1,95
Heating	Calorgas ducted hot air Trumatic
Galley	yes
Countertop	yes
Sink	Stainless steel
Cooker	Calor gas
Oven	yes
Fridge	with freezer compartment Electrolux
Hot water system	220v
Water pressure system	Electrical
Owners cabin	V-bed
Bathroom	en suite
Toilet	En suite
Toilet system	Manual
Wash basin	in the bathroom
Shower	En suite

## MACHINERY

No of engines	1
Make	Ford
Type	Lehman
HP	120,00
kW	88,20
Fuel	diesel
Year installed	1979
Maximum speed (kn)	8



Cruising speed (kn)	6.00
Consumption (l/hr)	5.00
Engine hours	2500
Engine cooling system	Freshwater heatexchanger
Drive	shaft
Engine controls	Bowden cable
Gearbox	Hydraulic Velvet
Bowthruster	Hydraulic
Exhaust	Watercooled
Thrust bearing	yes
Propeller type	Fixed
Propeller shaft material	Stainless steel
Shaft lubrication	Water
Electric bilge pump	yes
Electrical installation	12/220 Volt
Start battery	yes
Service battery	2
Battery charger	yes
Shorepower	yes

## NAVIGATION

Compass	2 x
Depth sounder	Humminbird
VHF	Sailor incl. ATIS
Autopilot	Autohelm 6000
GPS	Raytheon
Plotter	Autohelm

## EQUIPMENT

Fixed windscreen	yes
Bathing platform	Teak

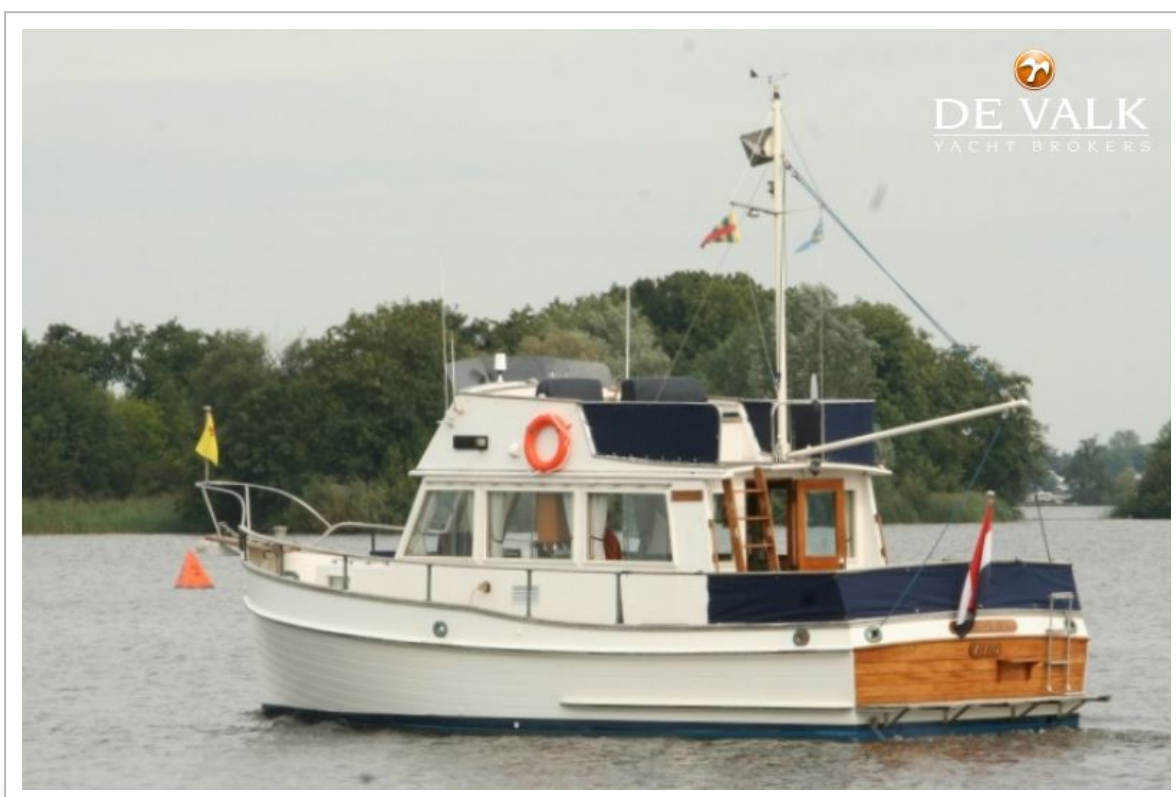


Boarding ladder	yes
Anchor	yes
Anchor chain	+ 100 m.rope 6 m.
Windlass	Hydraulic
Sea railing	Teak
Grab rail (superstructure)	Teak
Railing side opening gates	yes
Pulpit	yes
Wiper	yes
Horn	yes
Radio-cd player	Blaupunkt
Clock - barometer	yes

## RIGGING

Material mast	Aluminium coated
Mast lowering system	yes



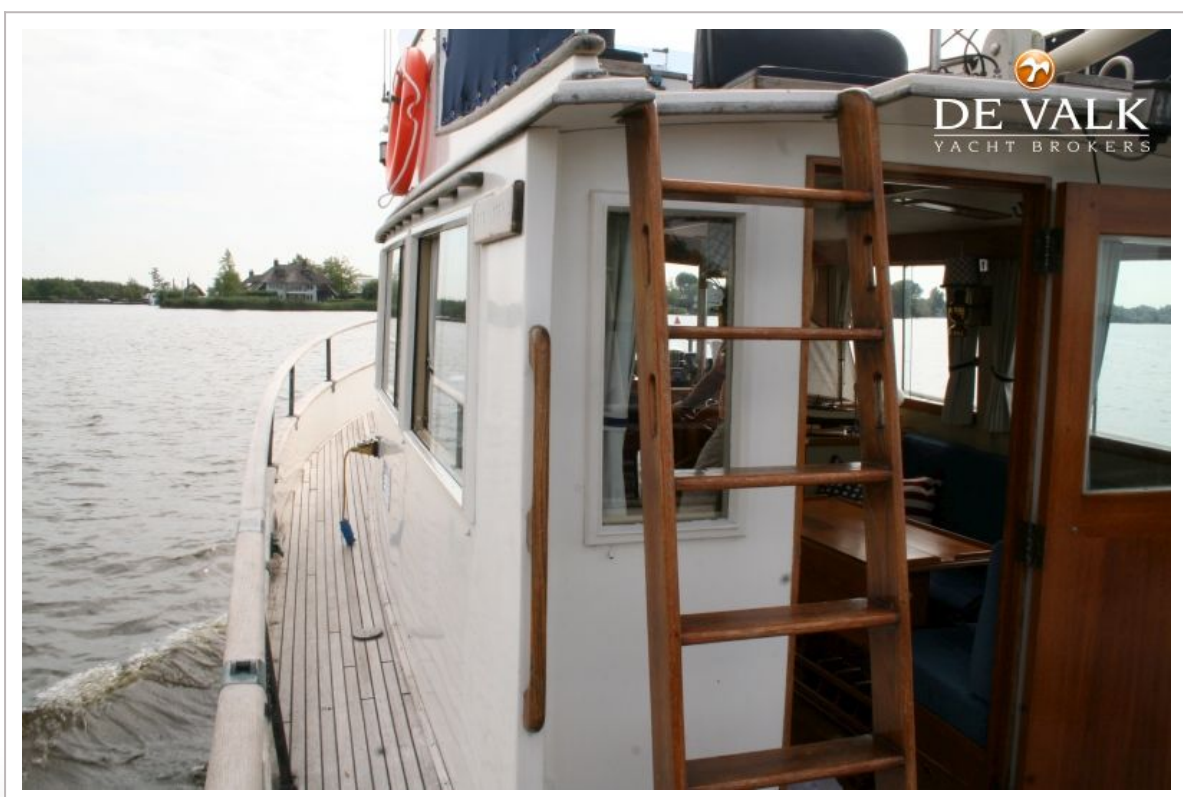
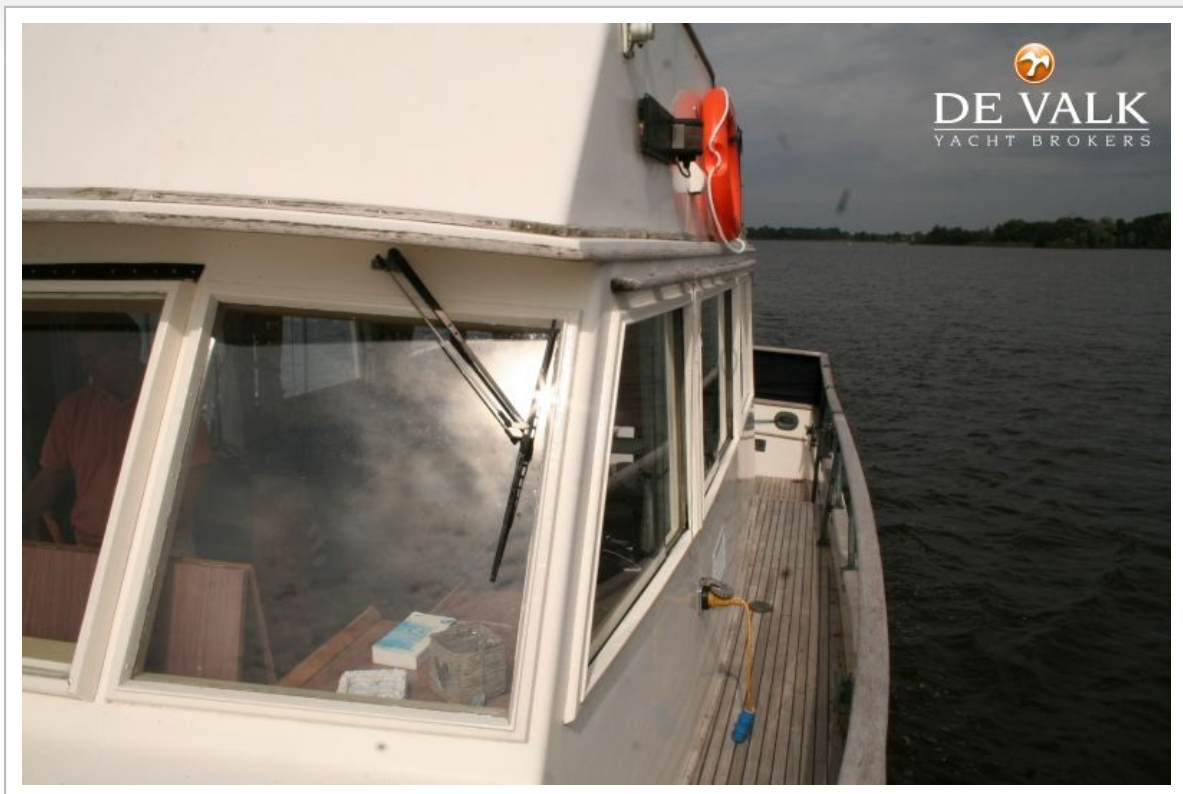














## GRAND BANKS 32







## GRAND BANKS 32











## GRAND BANKS 32

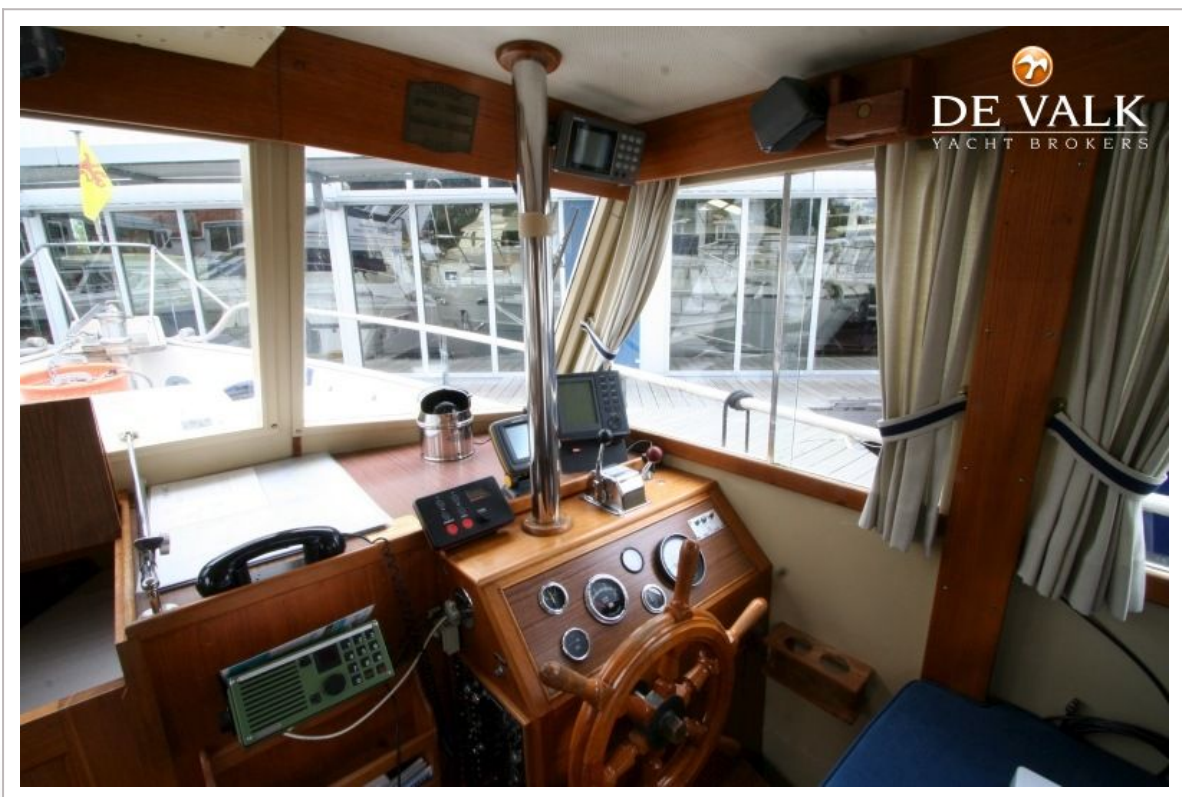


## GRAND BANKS 32





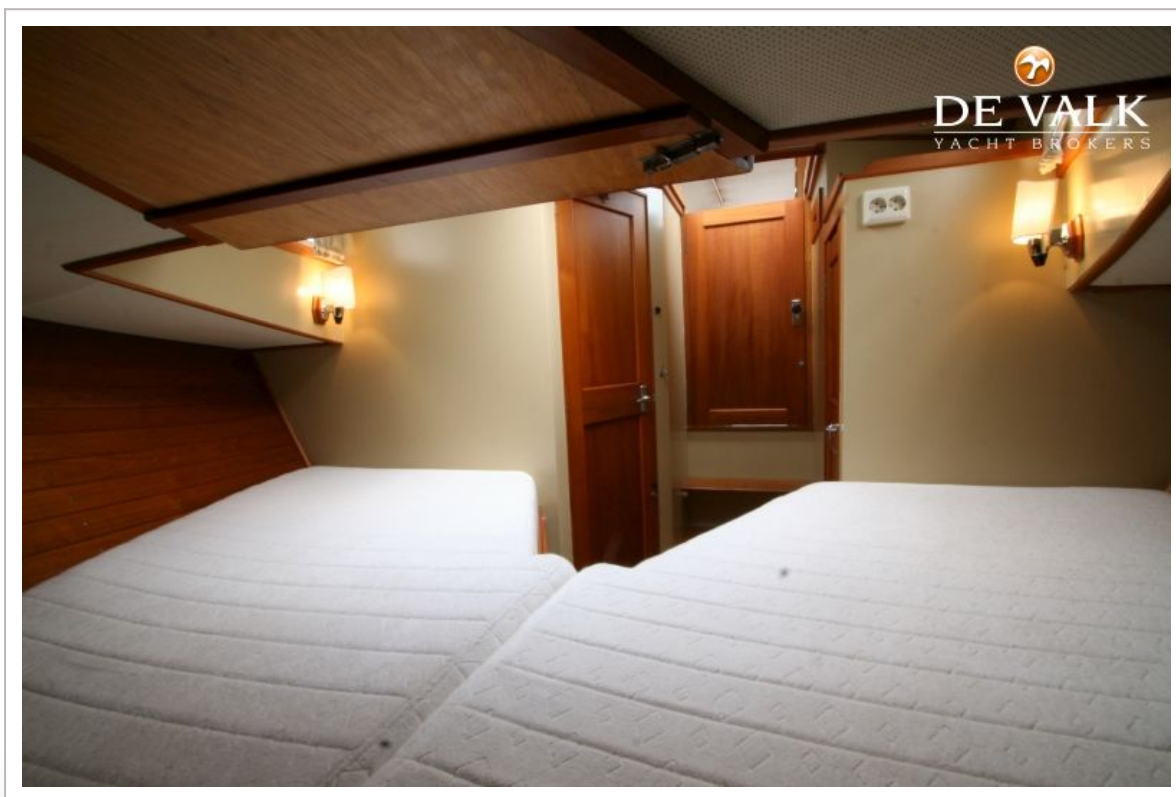
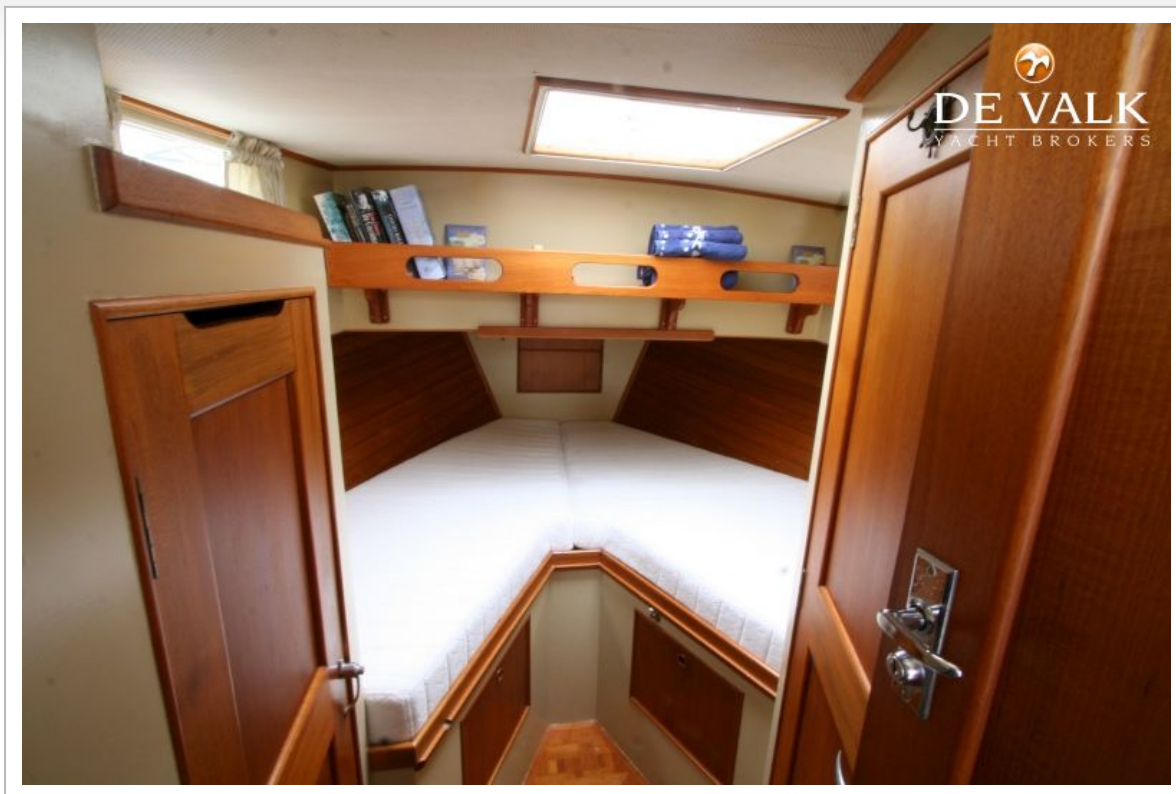




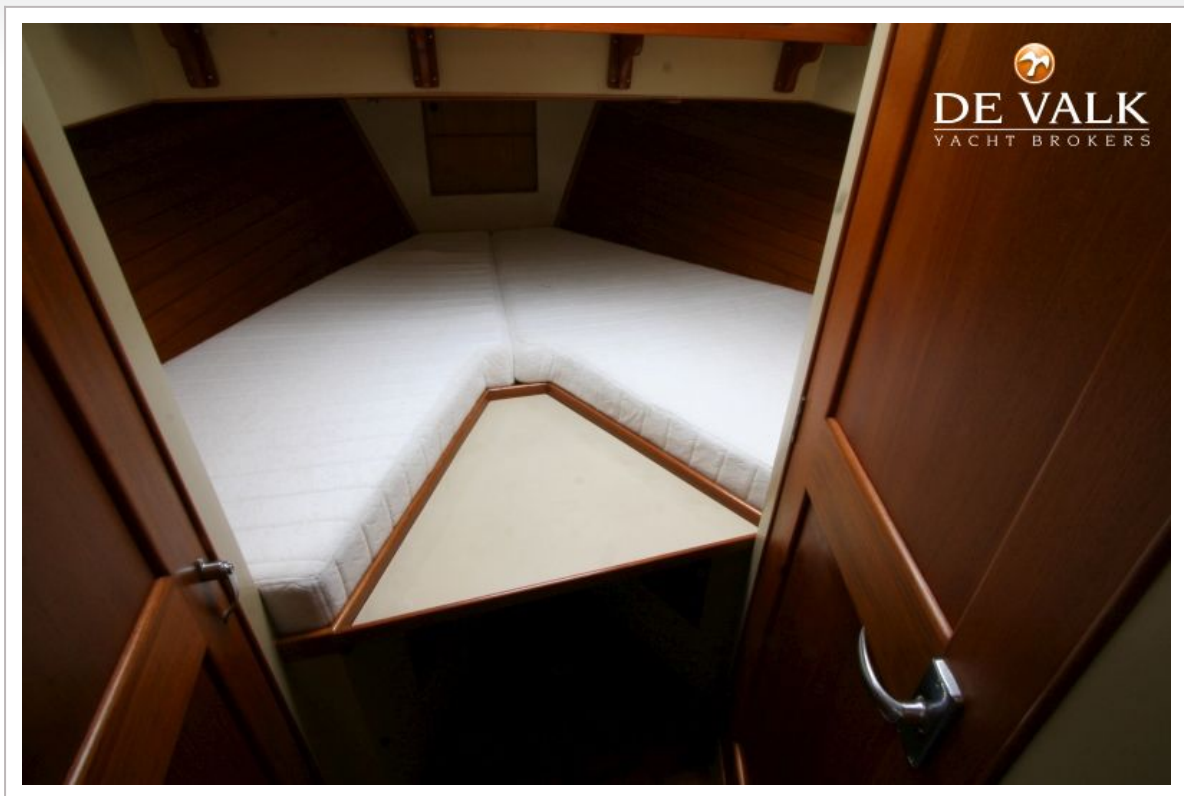




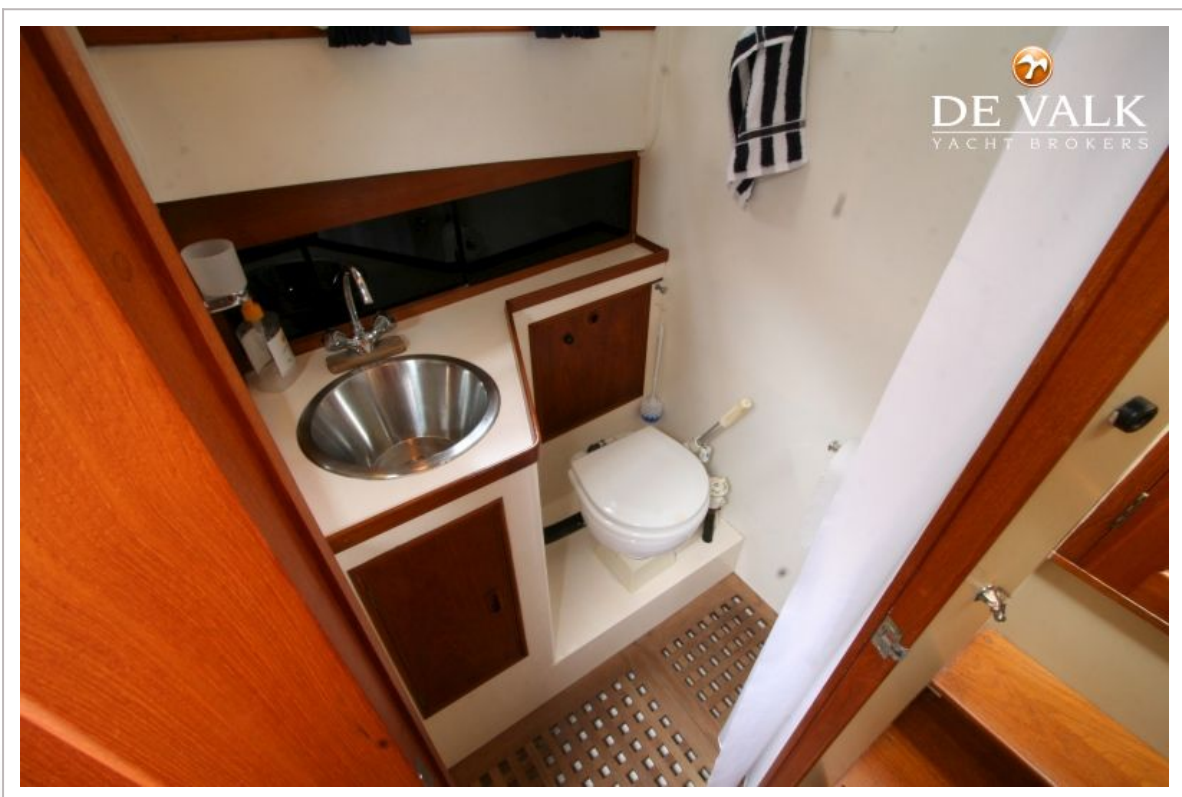
## GRAND BANKS 32











## GRAND BANKS 32





