



BAVARIA 38



BROKER'S COMMENTS

"Desperado" sails perfectly and manageable thanks to her complement of full furling sails. With her three double cabin layout she's very suitable for family with children or for people who want to sail with their friends. Very good maintained by her second owner since 2008.

Reinier van der Wolf

SPECIFICATIONS

Dimensions	12.33 x 3.87 x 1.70 (m)	Builder	Bavaria Yachtbau GmbH
Built	2004	Cabins	3
Material	GRP	Berths	6
Engine(s)	1 x Volvo Penta MD 2030 diesel	Hp/Kw	29.00 (hp), 21.32 (kw)
Asking price	sold (VAT)	Lying	at sales office

CONTACT

Sales office	De Valk Monnickendam	Telephone	+31 299 65 63 50
Address	Hoogedijk 6 1145 PM Katwoude The Netherlands	E-mail	monnickendam@devalk.nl

DISCLAIMER

These particulars are given in good faith as supplied but cannot be guaranteed.



GENERAL

Model	BAVARIA 38
Type	sailing yacht
LOA (m)	12,33
LWL (m)	10,25
Beam (m)	3,87
Draft (m)	1,70
Air draft (m)	17,05
Headroom (m)	1,90
Year built	2004
Builder	Bavaria Yachtbau GmbH
Country	Germany
Designer	J&J Design
Displacement (t)	7,3
Ballast (tonnes)	cast iron 2,05
CE norm	A
Hull material	GRP
Hull colour	white
Hull shape	roundbilged
Keel type	fin keel
Superstructure material	GRP
Deck material	GRP
Deck finish	moulded in
Superstructure deck finish	moulded in
Cockpit deck finish	teak
Window frame	aluminium
Window material	perspex
Fuel tank (litre)	polyethylene 150
Level indicator (fuel tank)	at EWS Panel 201
Freshwater tank (litre)	polyethylene 2x 150
Level indicator (freshwater)	at EWS Panel 201



Blackwater tank (litre)	50
Blackwater tank extraction	deck extraction
Wheel steering	mechanical Lewmar
Outside helm position	yes
Emergency tiller	S/S

ACCOMMODATION

Cabins	3
Berths	6
Interior	mahogany
Floor	teak and holly
Saloon	U-shaped settee
Headroom saloon (m)	1,90
Chart table	yes
Galley	yes
Countertop	corian
Sink	stainless steel 2x
Cooker	calor gas Bavaria Yachts
Oven	yes
Fridge	Isotherm Compact
Hot water system	220V + engine QL boiler
Water pressure system	electrical
Owners cabin	v-bed
Wardrobe	hanging/drawers/shelves
Guest cabin 1	double bed
Wardrobe	yes
Bathroom	shared
Toilet	
Toilet system	manual Jabsco
Wash basin	
Shower	



Guest cabin 2	double bed
Wardrobe	yes
Extra info	Owners cabin: swing feather system. Guest cabins with slatted base.

MACHINERY

No of engines	1
Make	Volvo Penta
Type	MD 2030
HP	29,00
kW	21,32
Fuel	diesel
Year installed	2004
Maximum speed (kn)	7
Cruising speed (kn)	6
Engine cooling system	freshwater heat exchanger
Drive	sail-drive
Engine controls	bowden cable
Exhaust	watercooled
Propeller type	fixed
Propeller blades	3
Manual bilge pump	yes
Electric bilge pump	yes
Electrical installation	12V/220V
Start battery	1x 55 Ah
Service battery	2x 140 Ah
Battery charger	140A
Inverter	Mastervolt
Shorepower	with cable 12V/220V

NAVIGATION



Compass	Plastimo
Depth sounder	Raymanrine ST60
Log	Raymarine ST60
Windset	Raymarine ST60 Wind
VHF	Navman 7100
GPS	Furuno GPS/WAAS GP32

EQUIPMENT

Sprayhood	yes
Cockpit cover	yes
Cockpit table	yes
Bathing platform	integrated
Boarding ladder	stainless steel
Deck shower	hot + cold water
Anchor	yes
Sea railing	wire
Railing side opening gates	stainless steel
Pushpit	S/S
Pulpit	S/S
Fenders	yes
Mooring lines	yes
TV	Flatscreen
Radio-cd player	VDO
Speakers in salon	yes
Fire extinguisher	yes
Latest extinguisher survey	must be proofed

RIGGING

Rigging	sloop
Standing rigging	wire
Brand mast	Seldén

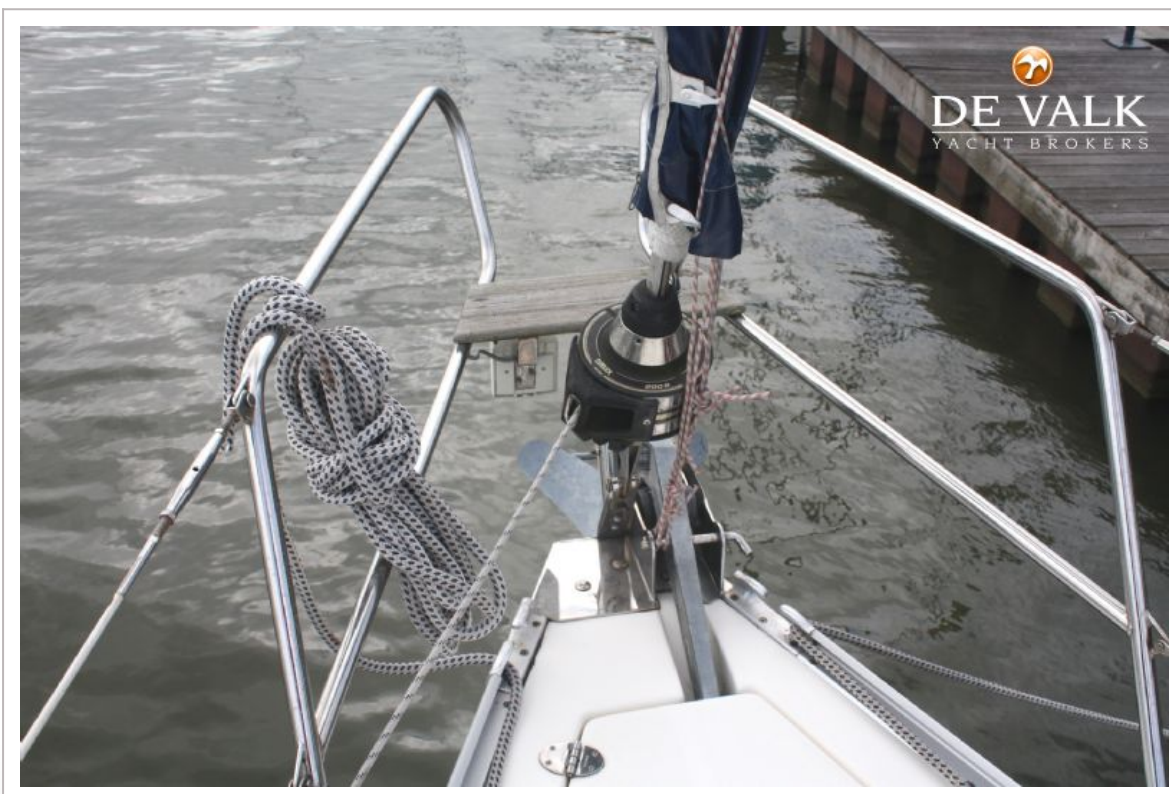


Material mast	aluminium
Spreaders	2x
Mainsail	yes
Stoway mast	yes
Genoa	yes
Genoa furler	Furlex 200S
Genoa cover	yes
Reefing System	main in-mast furling
Backstay adjuster	tackle
Boomvang	Rodkicker
Genoa sheetwinches	Harken 2x 44ST
Halyard winches	Harken 2x 40 ST two speed



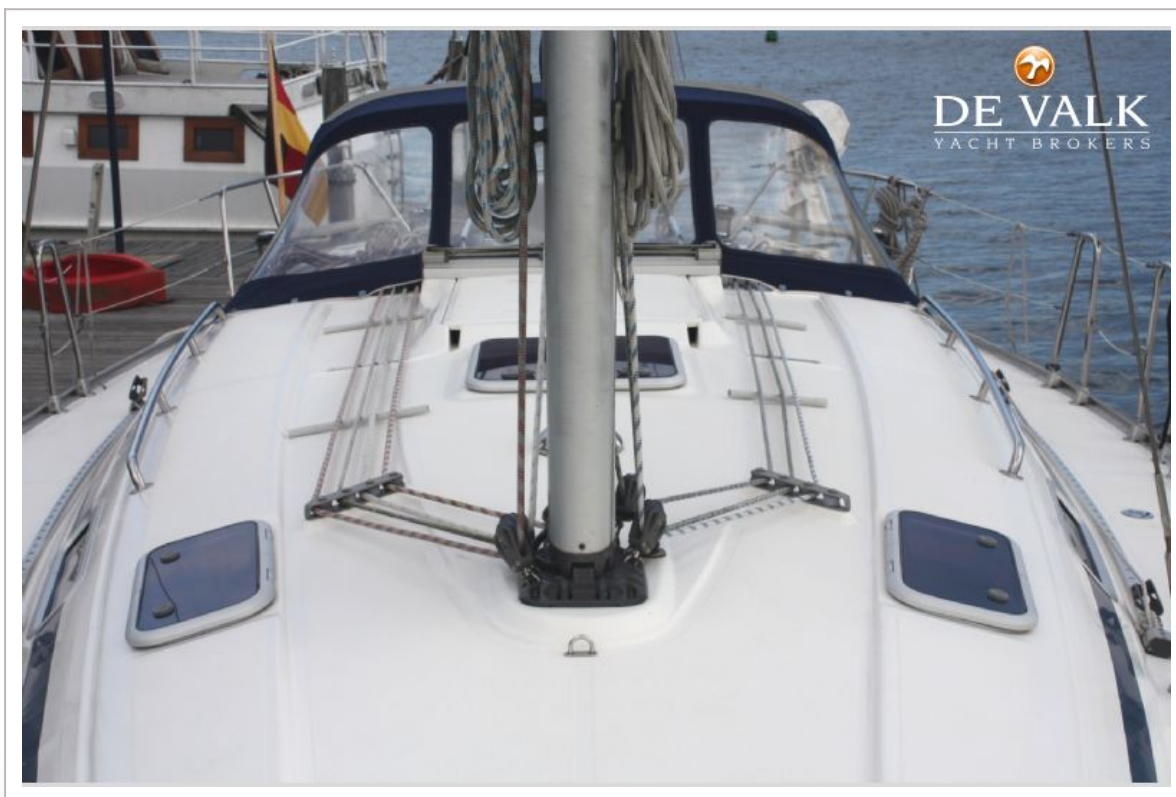








BAVARIA 38



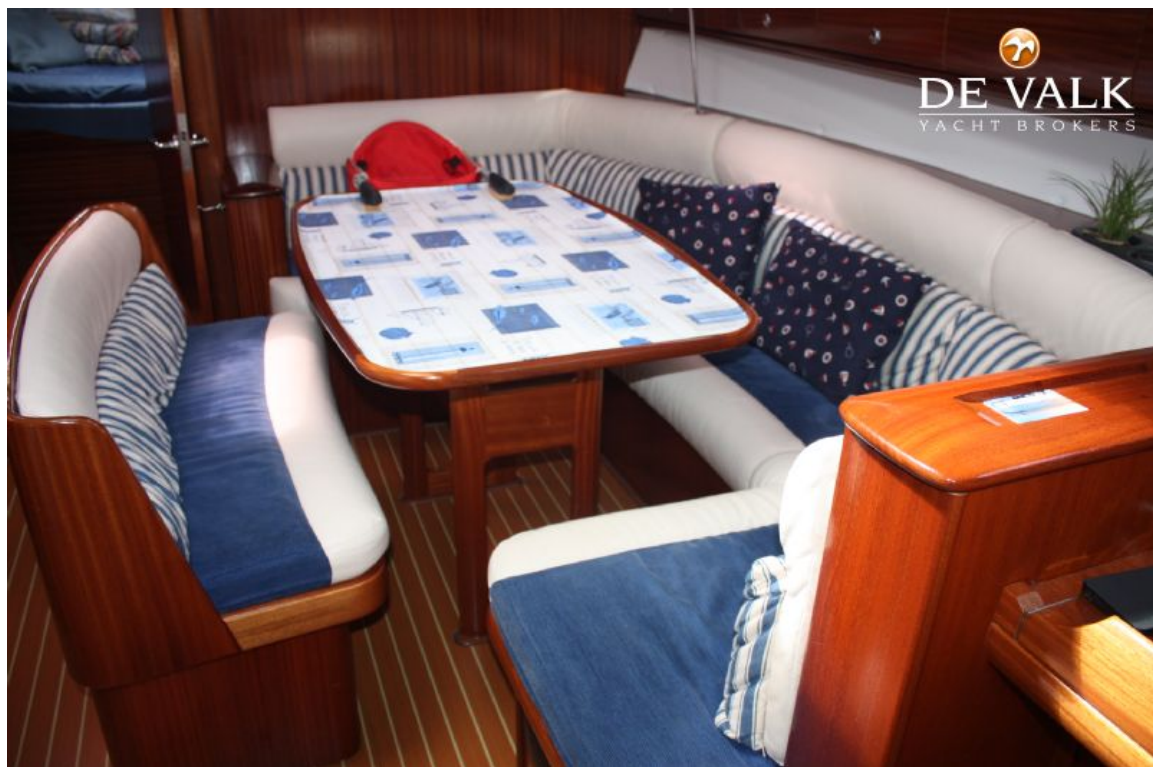


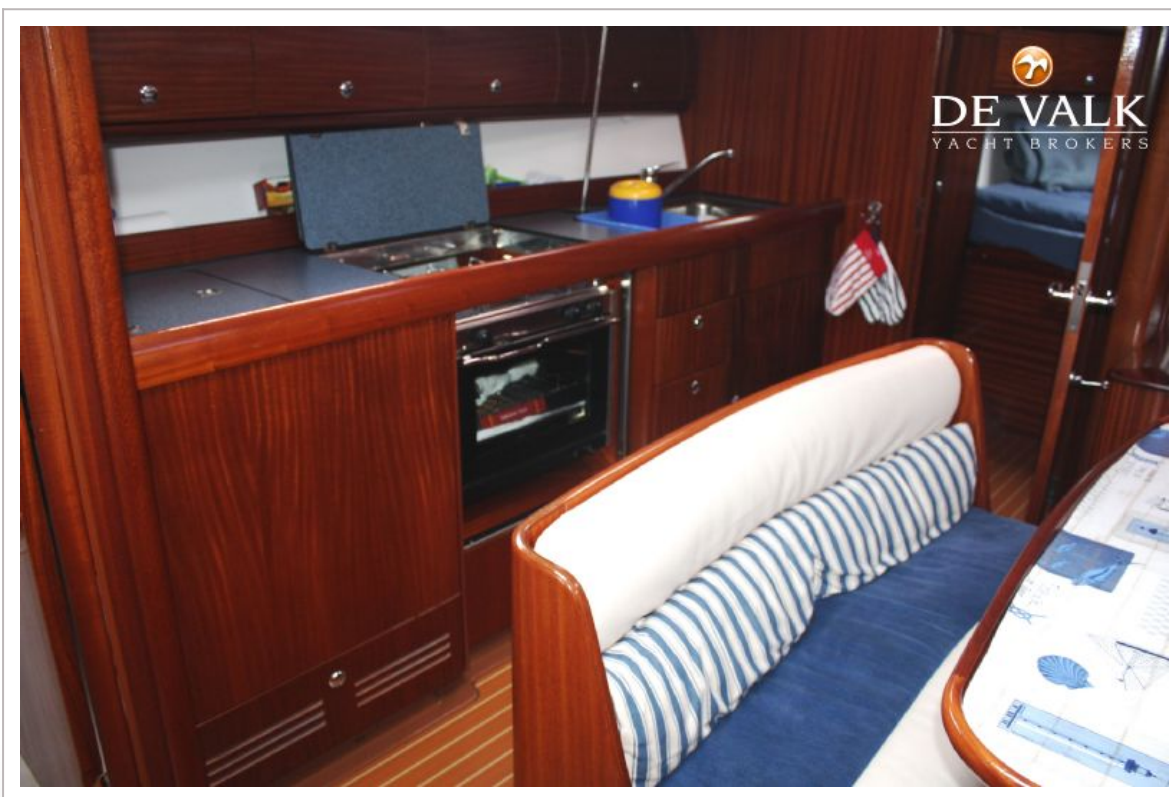
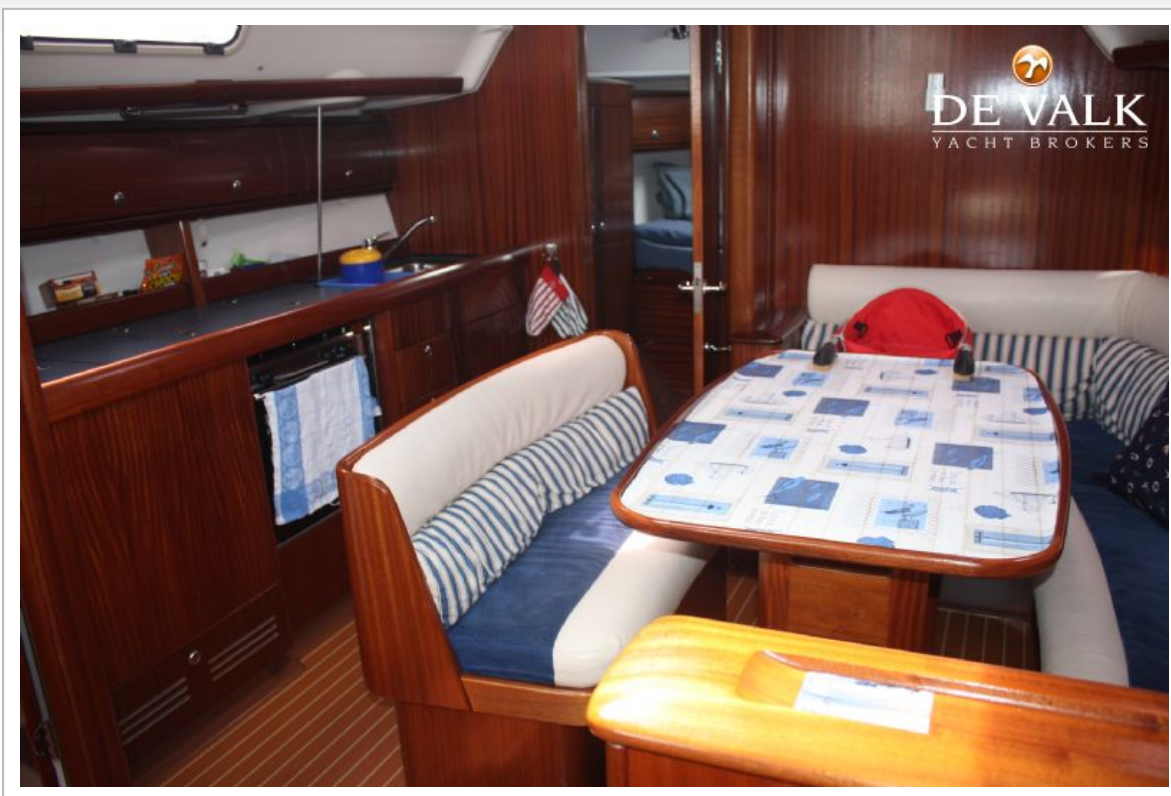


BAVARIA 38



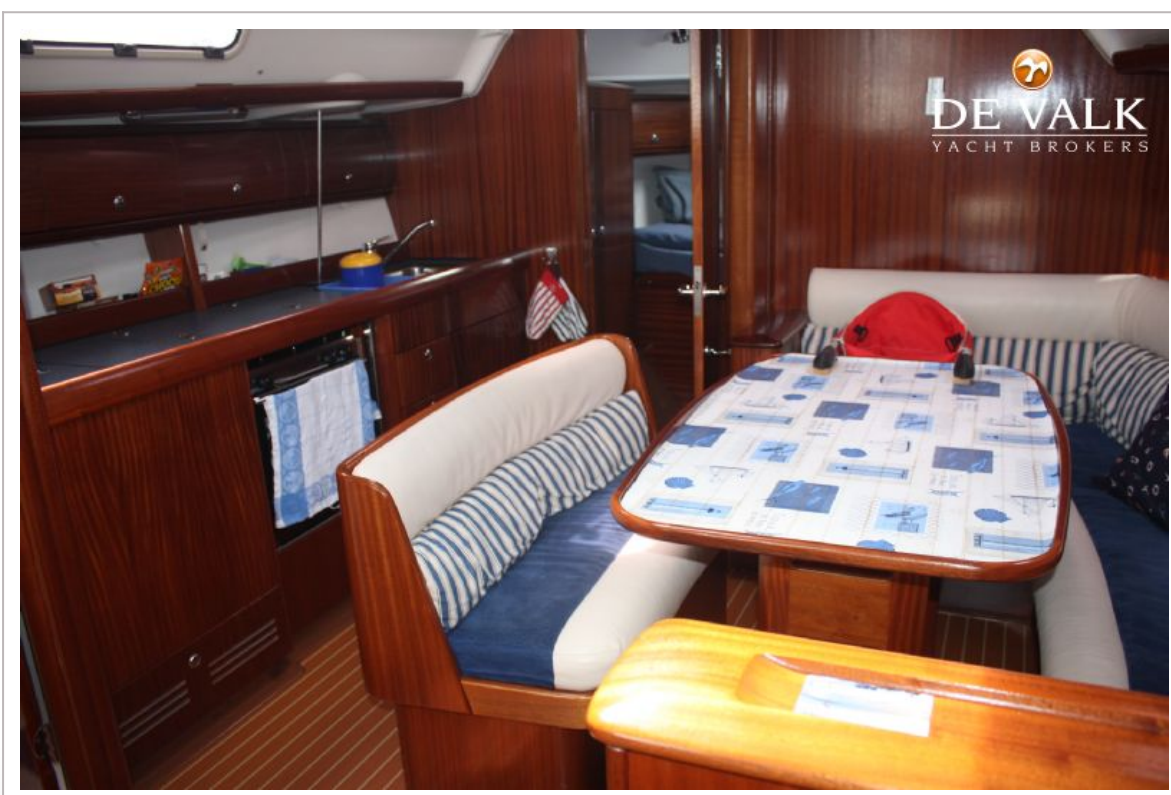






BAVARIA 38

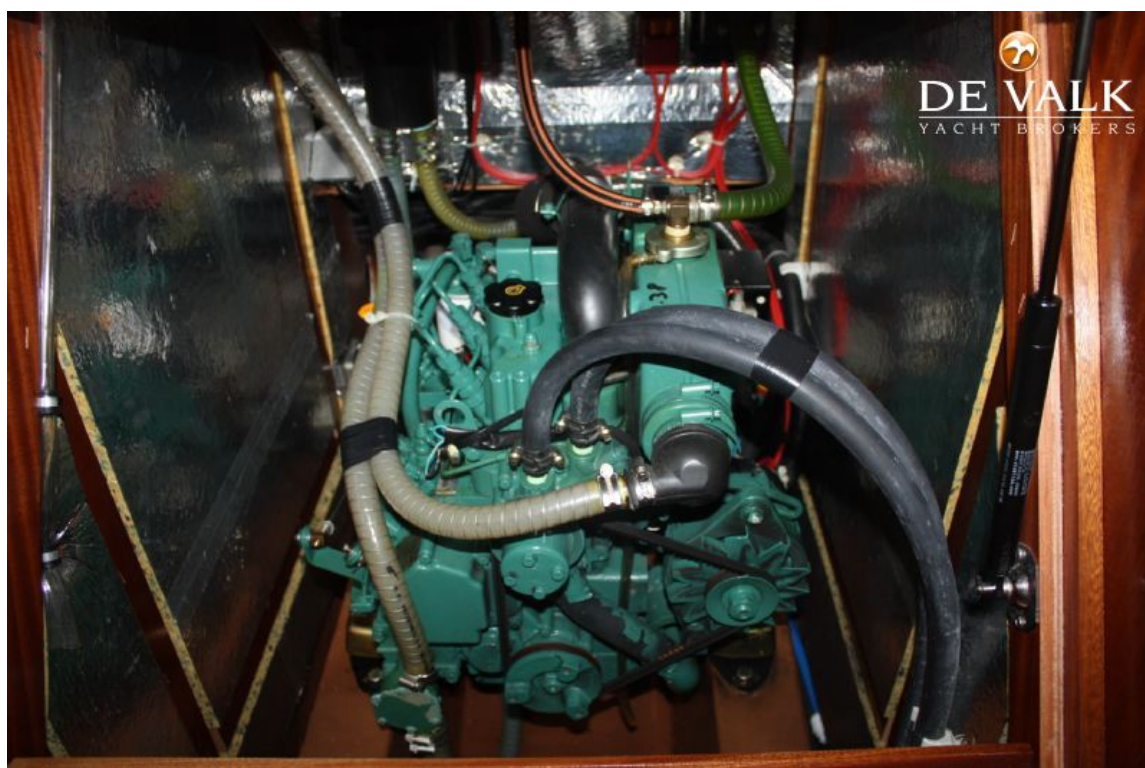
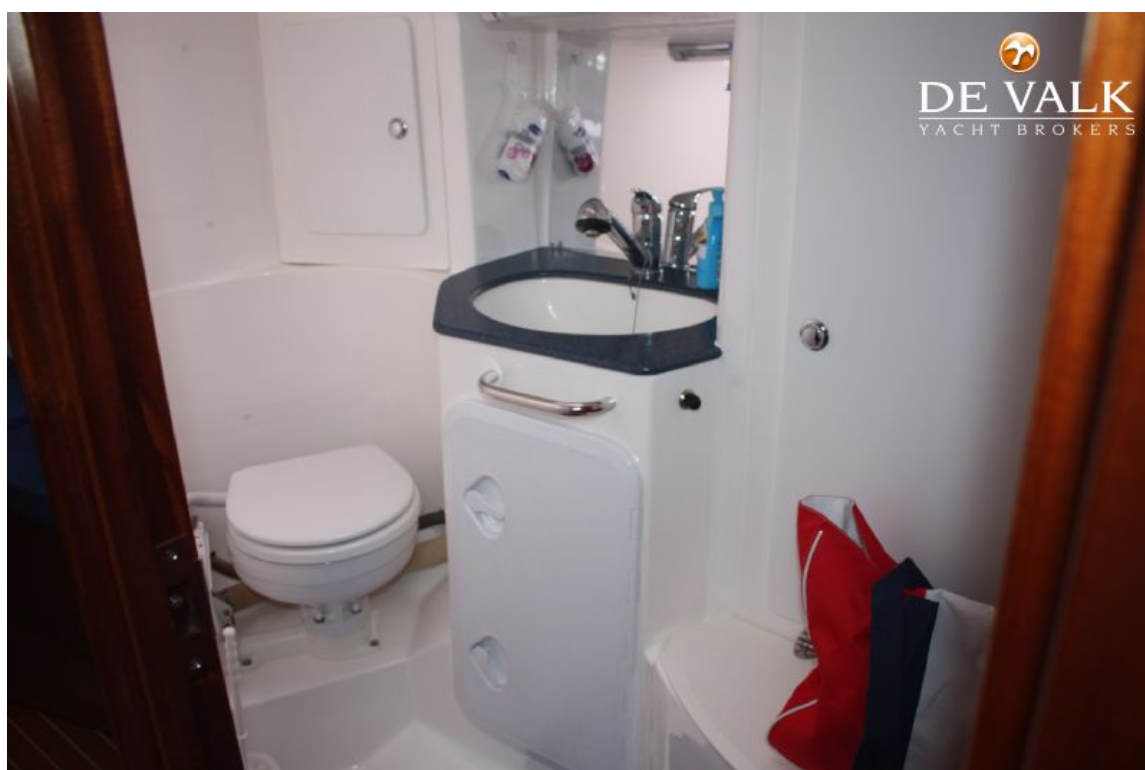








BAVARIA 38





3-Kabinen Version / 3-Cabin version

