



DE VALK
YACHT BROKERS



TAYANA 37 PILOTHOUSE



DE VALK
YACHT BROKERS

TAYANA 37 PILOTHOUSE

BROKER'S COMMENTS

Anybody looking for a long passage maker will have heard about the incredible capacity of the Tayana 37. As a double ender it can handle swells of 8m plus with ease. This one has been prepared to even venture to high latitudes with 8 bulkheads and a re-enforced bow with 3stringers on each side. A windvane steering and a Raymarine autopilot as backup. A wind generator and solar panels for autonomy. She had a major refit in 2006/07 for serious longdistance crossings and now in the yard in Lagos. The ideal boat for safe sailing across any ocean.

Reinoud Bicker Caarten

SPECIFICATIONS

Dimensions	11.30 x 3.50 x 1.72 (m)	Builder	Ta Yang shipyard
Built	1979	Cabins	2
Material	GRP	Berths	4
Engine(s)	1 x Yanmar 4JH 4E diesel	Hp/Kw	55.00 (hp), 40.48 (kw)
Asking price	€ 59.000 (VAT Exempt)	Lying	at sales office

CONTACT

Sales office	De Valk Portugal	Telephone	+351 308 812321
Address	Edifício Administrativo - Ponta da Areia 8500 - 345 Portimão PT	E-mail	portugal@devalk.nl

DISCLAIMER

These particulars are given in good faith as supplied but cannot be guaranteed.



TAYANA 37 PILOTHOUSE

GENERAL

Model	TAYANA 37 PILOTHOUSE
Type	sailing yacht
LOA (m)	11,30
LWL (m)	9,45
Beam (m)	3,50
Draft (m)	1,72
Air draft (m)	18,00
Headroom (m)	2,00
Year built	1979
Builder	Ta Yang shipyard
Country	Taiwan
Designer	Robert Perry
Displacement (t)	10,2
Ballast (tonnes)	lead in GRP 3,6
CE norm	A
Hull material	GRP
Hull colour	off-white
Hull thickness (mm)	20
Hull shape	S-bilged
Keel type	long keel
Superstructure material	GRP
Deck material	GRP
Deck finish	teak New 2001, 22mm teak
Superstructure deck finish	non-skid paint
Cockpit deck finish	teak
Antifouling (year)	2022 With Osmoguard and 2 layers of primer
Dorades	2
Window frame	brass
Window material	tempered glass
Deckhatch	4



TAYANA 37 PILOTHOUSE

Portholes	brass
Fuel tank (litre)	stainless steel 220L
Level indicator (fuel tank)	Stick
Fuel daytank (litre)	stainless steel 60L
Freshwater tank (litre)	100L, 130L, 170L
Blackwater tank (litre)	polyethylene
Blackwater tank extraction	deck extraction
Wheel steering	cable steering
Outside helm position	cable steering
Emergency tiller	yes
More info on hull	protected with 4 layers of epoxy and osmogard against osmoses. Fitted with 5 bulkheads
More info on paintwork	Painted new 2016 with Boero
Extra info	The bow was re-enforced with 3 stringers on each side moulded on with glassmats and epoxy
Extra info	all seacocks renewed in 2024 with plastic ones

ACCOMMODATION

Cabins	2
Berths	4
Interior	teak
Floor	teak and holly
Open cockpit	yes
Pilot house	With 2 removable folding seats
Headroom saloon (m)	2.05m
Heating	Taylor oilheater
Heating 2	electric 220V 2 heaters
Navigation center	in Pilothouse
Chart table	In pilothouse with large space for seacharts
Dinette to convert into berth	table lowered converts into double bed
Convertible berth	Couch in saloon
Galley	yes



TAYANA 37 PILOTHOUSE

Countertop	tiles
Sink	stainless steel
Cooker	calor gas 3 burner with oven
Oven	yes
Fridge	+ large Nirobox in the keel for drinks Large Mobitronic
Water pressure system	yes
Manual and/or foot pump	For fresh and seawater
Kettle	yes
Coffee maker	yes
Crockery	6 pax
Owners cabin	v-bed Forward cabin
Bed length (m)	2,10m x 2,20m
Wardrobe	hanging and drawers
Bathroom	shared
Toilet	shared
Toilet system	manual
Wash basin	at the toilet
Shower	Integrated
Guest cabin 1	Bed in Pilothouse

MACHINERY

No of engines	1
Make	Yanmar
Type	4JH 4E
HP	55
kW	40.48
Fuel	diesel
Year installed	2006
Maximum speed (kn)	8
Cruising speed (kn)	5.5
Consumption (l/hr)	2



TAYANA 37 PILOTHOUSE

Range (nm)	750
Engine hours	2600
Engine cooling system	freshwater heat exchanger
Drive	shaft
Engine controls	electrical Yanmar VDO
Gearbox	yes
Bowthruster	electric Sidepower
Gearbox	yes
Exhaust	watercooled Vetus
Propeller type	fixed
Propeller blades	4 blades
Propeller shaft material	stainless steel Niro
Manual bilge pump	1x high capacity
Electric bilge pump	fixed on engine with high capacity to keep her afloat Automatic
Bilge alarm	yes
Electrical installation	yes
Generator	Rutland water driven generator
Start battery	1 AGM
Service battery	2x AGM
Bowthruster battery	yes
Windlass battery	See bowthruster
Battery monitor	Mobitronic
Battery charger	Dometic, new 2022
Wind generator	Superwind
Solar panel	2x M75 Siemens 48 watt
Diode battery combiners	yes
Shorepower	yes
Insulation transformer	yes

NAVIGATION

Compass	Plastimo
---------	----------



TAYANA 37 PILOTHOUSE

Depth sounder	yes
Depth sounder/log	Raymarine
Windset	Raymarine
VHF	Icom M506 new 2016 with AIS receiver
Autopilot	Hydraulic drive 450kg Raymarine new 2022
Wind vane steering install.	with pin pilot Windpilot Pacific
Radar	Furuno 1715 new 2008
GPS	Furuno new 2008
Radar/GPS	Warner for collision danger and avoidance
Weather receiver	SSB transceiver with Pactor modem for internet and weathercharts
Navtex	Furuno
Electronic chart(s)	Atlantic Islands, European west coast, Mediterranean, Caribbean.
AIS receiver	yes
EPIRB	yes
Navigation lights	yes

EQUIPMENT

Sprayhood	yes
Cockpit cushions	yes
Cockpit table	yes
Bathing platform	yes
Boarding ladder	yes
Gangway	yes
Anchor	Rocna 25KG
Anchor chain	10mm galvanised steel 60m
Anchor 2	Fortress
Anchor chain	Anchor cord on roll 50m Aft
Other ground tackle	CQR 45lbs
Windlass	electrical Lofrans
Dinghy	inflatable Plastimo 2,70m



TAYANA 37 PILOTHOUSE

Outboard	Suzuki
Sea railing	yes
Pushpit	yes
Pulpit	yes
Life raft (pers)	container 4 pax new 2014
Lifejackets	4x automatic inflatable
Fenders	yes
Mooring lines	yes
Spare parts	yes
Tools	yes
Radio-cd player	yes
Speakers in salon	yes
Clock - barometer	yes
Fire extinguisher	yes

RIGGING

Rigging	fractional
Standing rigging	wire All standing rigging and spreaders renewed in 2006
Brand mast	Proctor
Material mast	aluminium
Spreaders	4x
Mainsail	from 2006
Mainsail cover	Lazyjacks with Lazybag
Jib	new 2006 Self tacking with boom
Genoa	new 2006 On furler
Genoa furler	yes
Yankee	new 2006 On furler
Self tacking jib installation	yes
Primary sheet winch	2x Barlow 40 ST
Halyard winches	Barlow 2x
Reefing winch	1x Barlow



TAYANA 37 PILOTHOUSE

Gennaker pole

aluminium Telescopic

Isolated backstay

yes



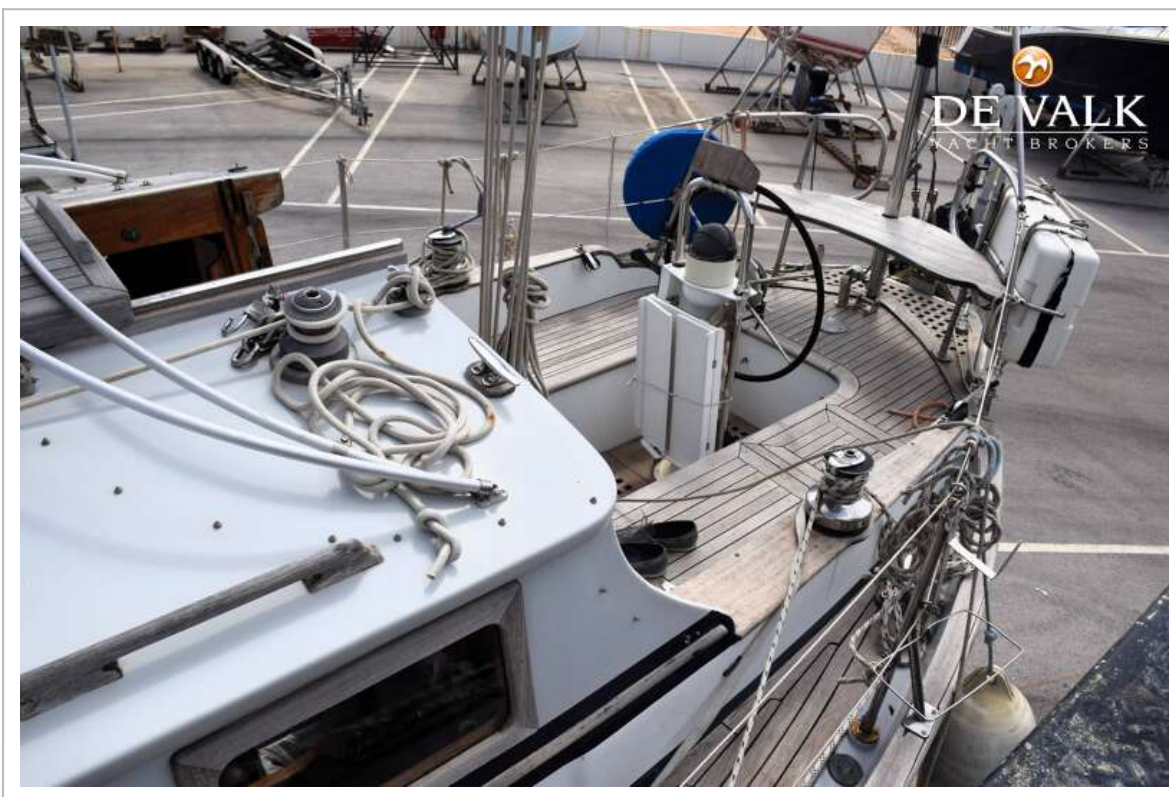
TAYANA 37 PILOTHOUSE



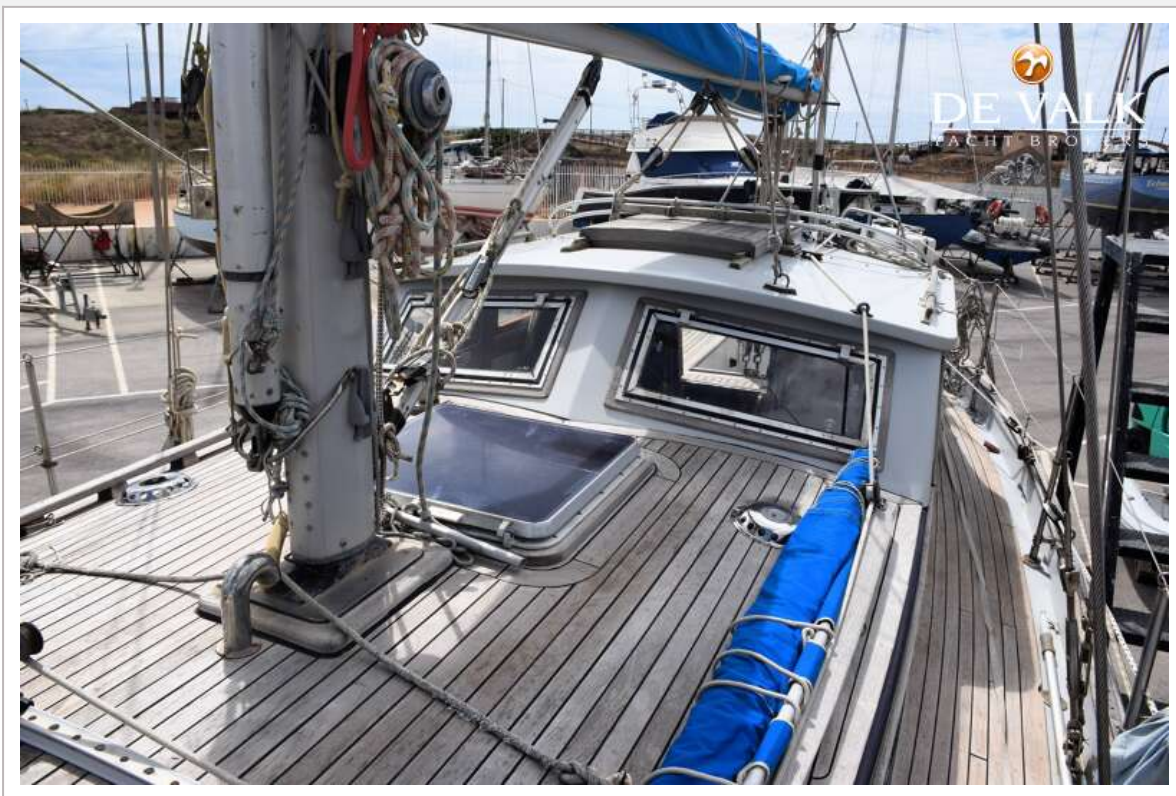
TAYANA 37 PILOTHOUSE



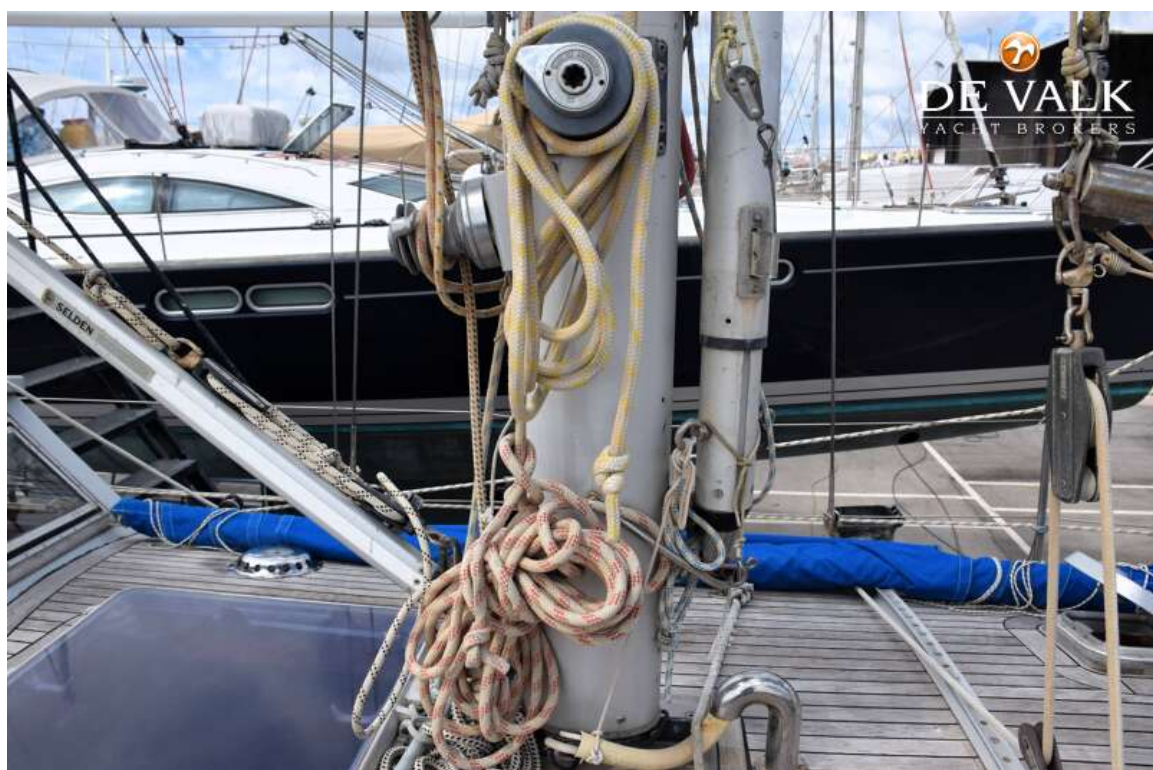
TAYANA 37 PILOTHOUSE



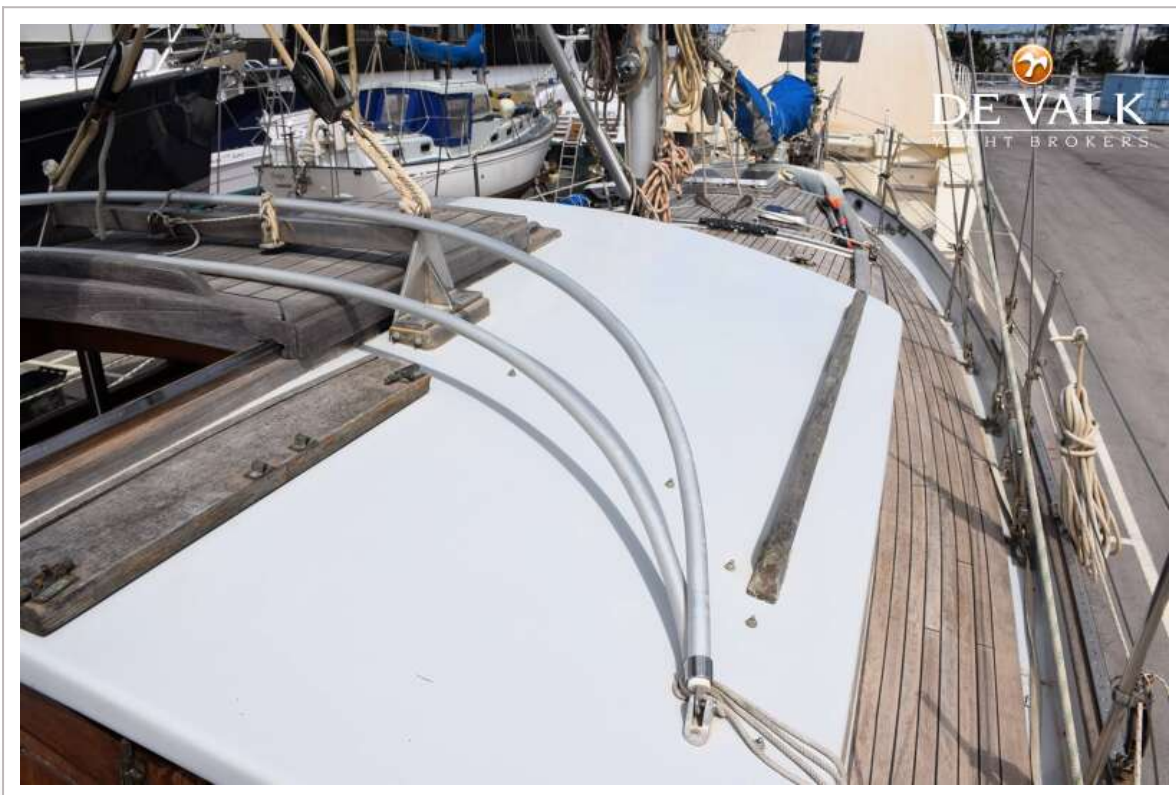
TAYANA 37 PILOTHOUSE



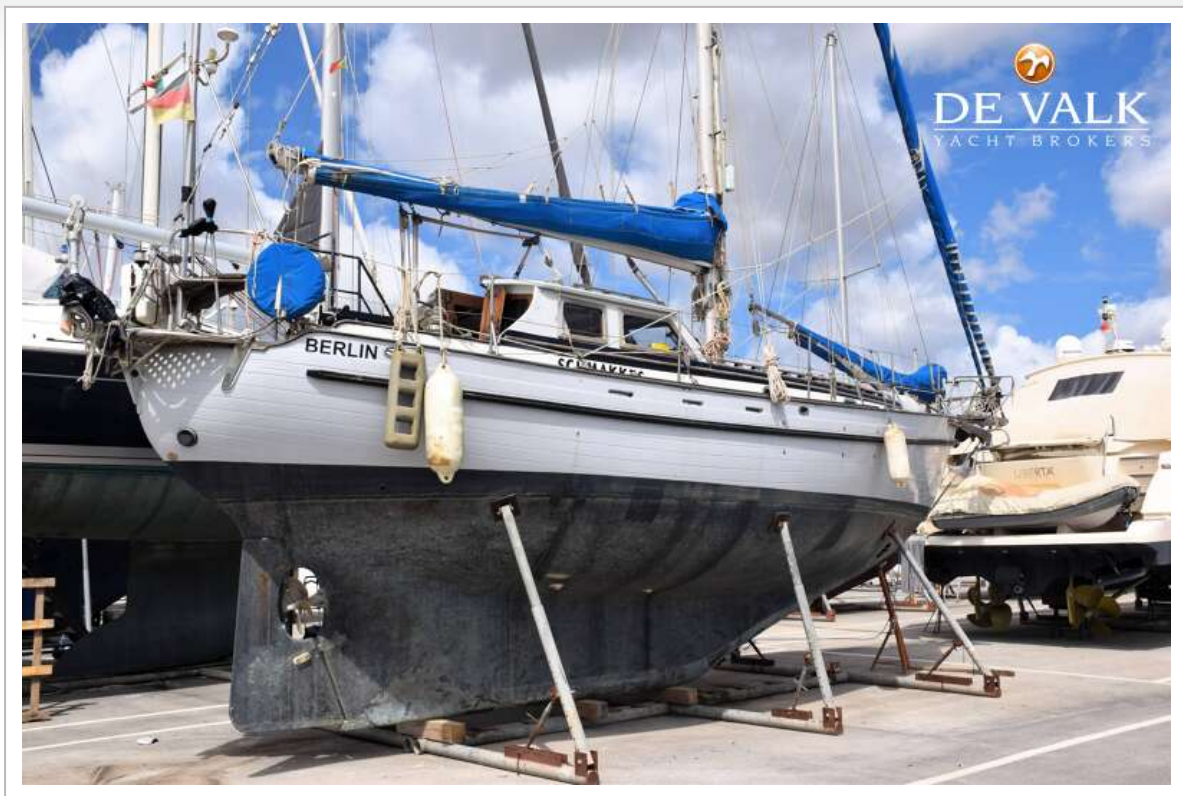
TAYANA 37 PILOTHOUSE



TAYANA 37 PILOTHOUSE



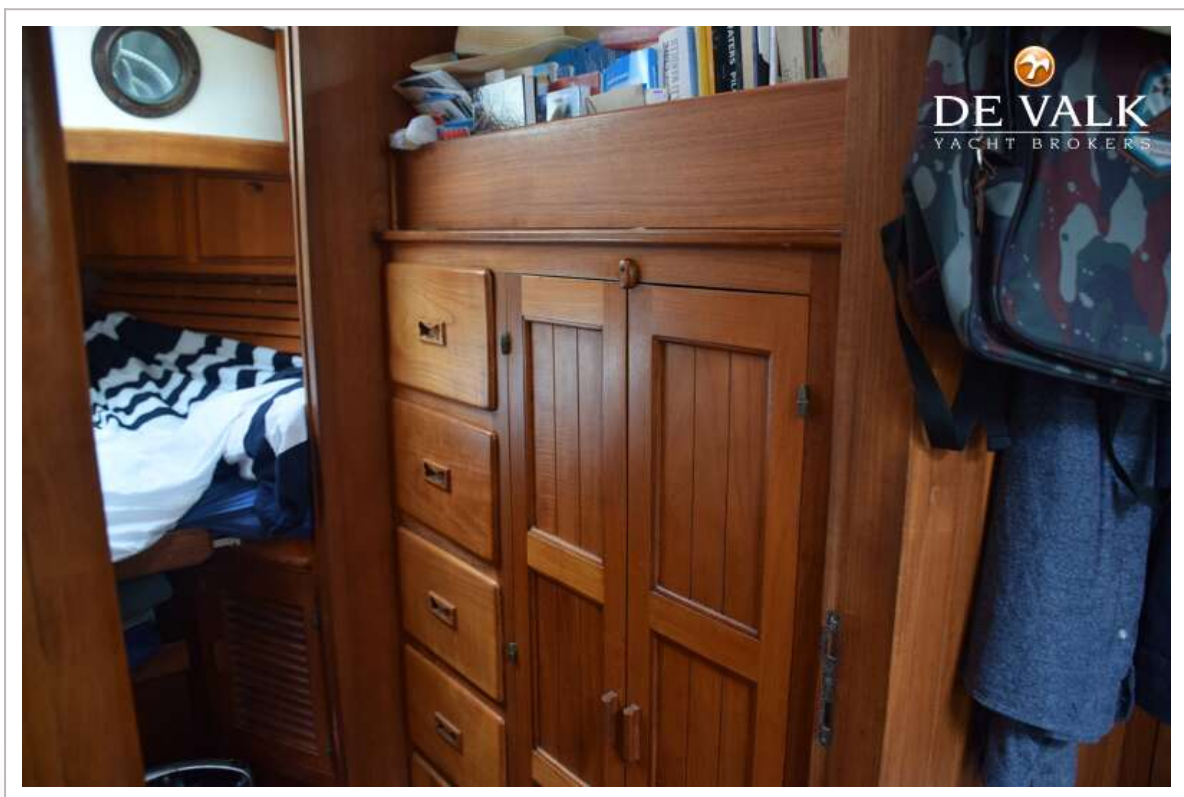
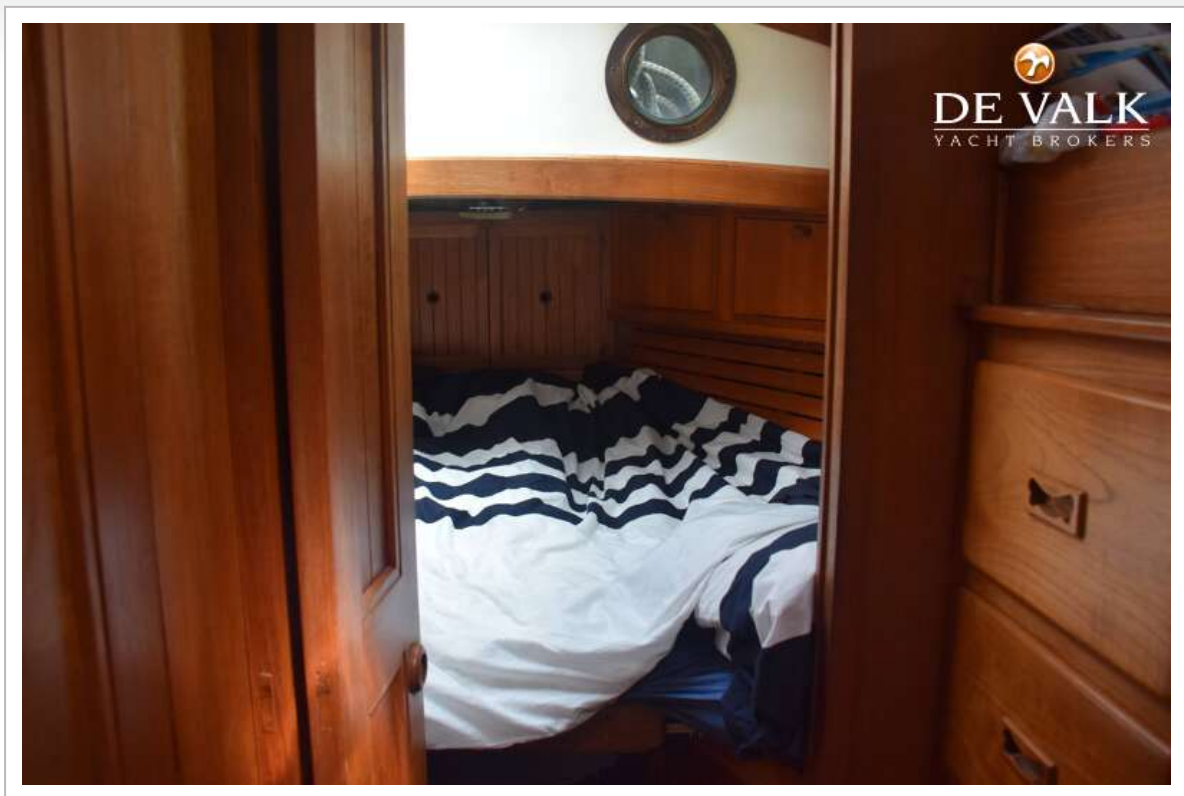
TAYANA 37 PILOTHOUSE



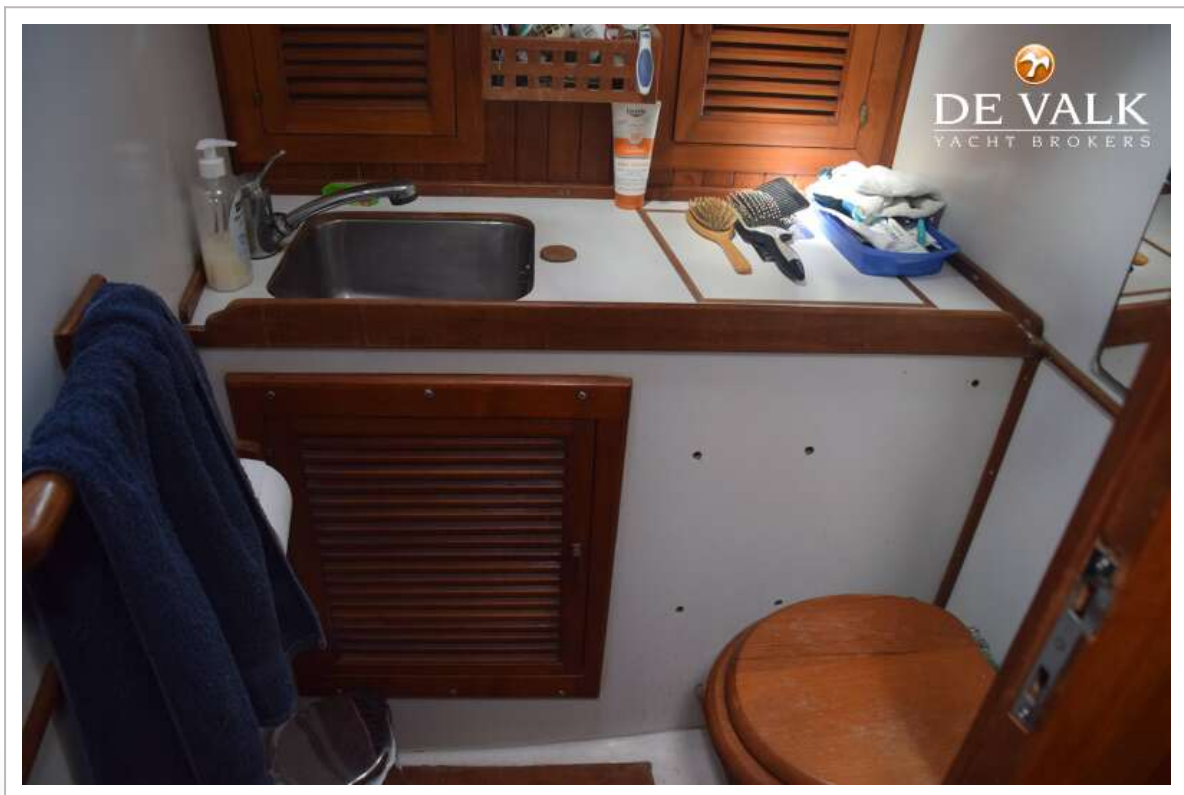
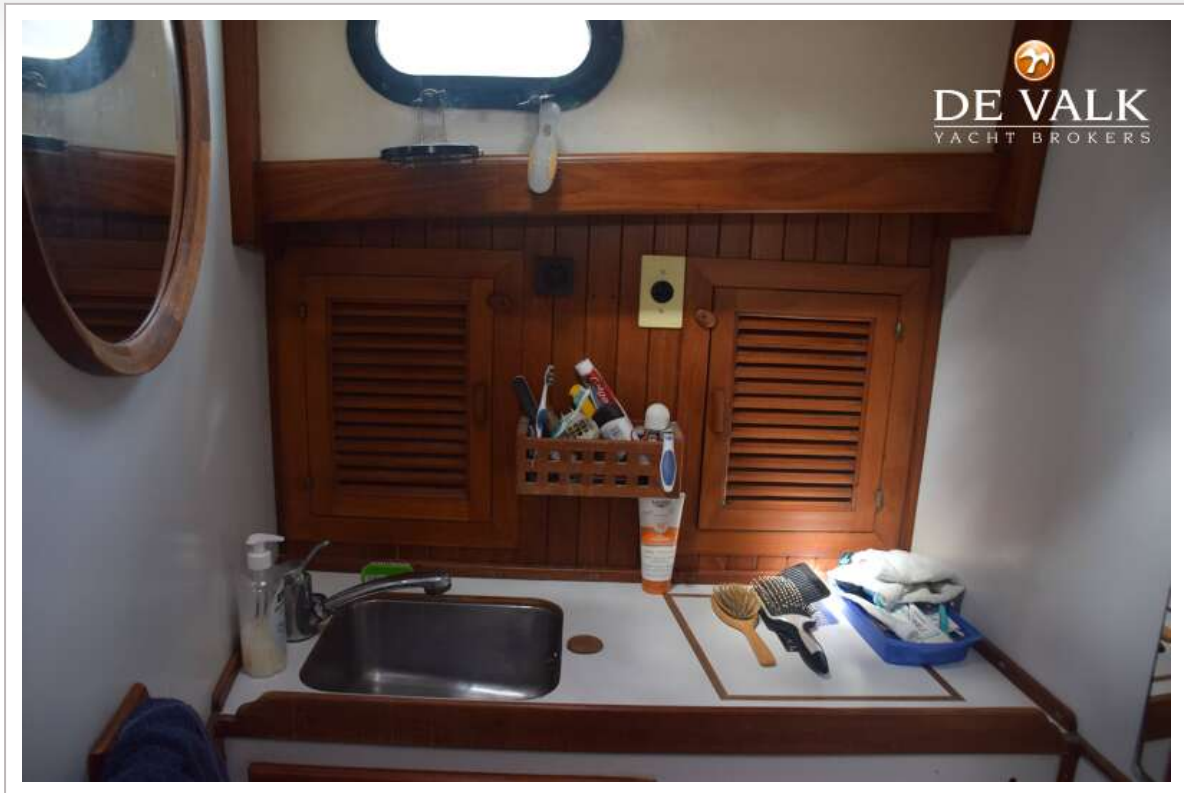
TAYANA 37 PILOTHOUSE



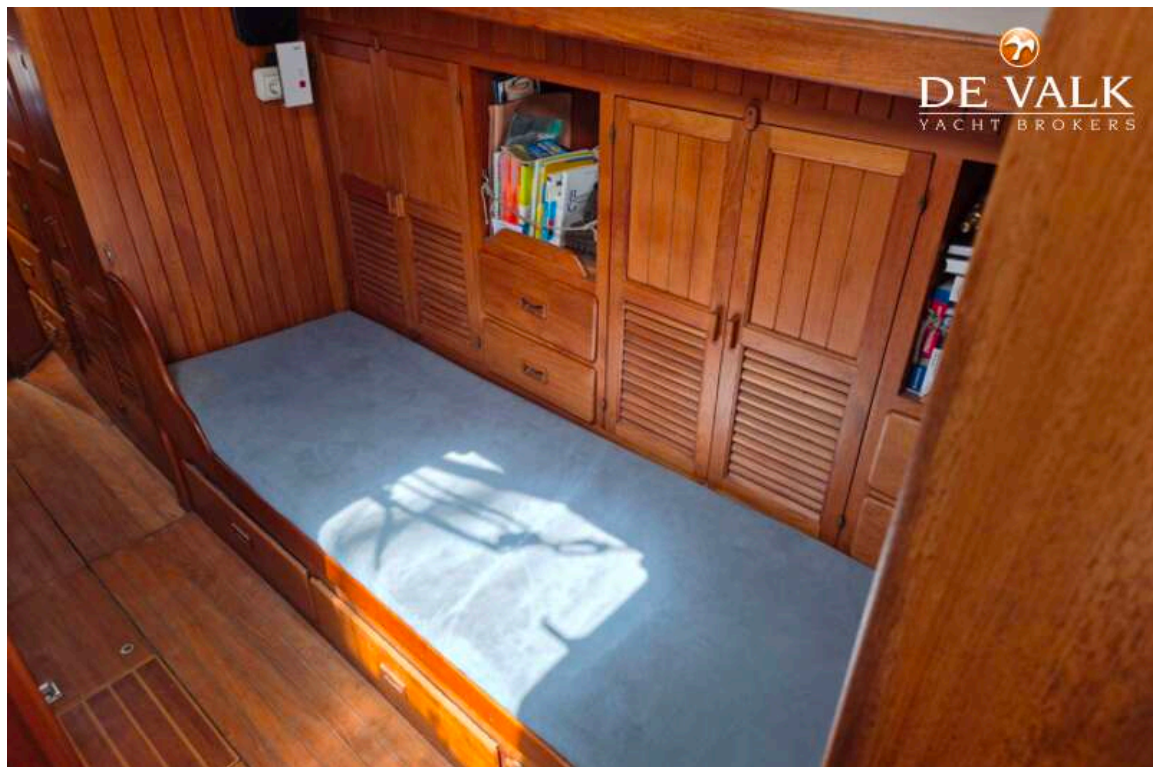
TAYANA 37 PILOTHOUSE



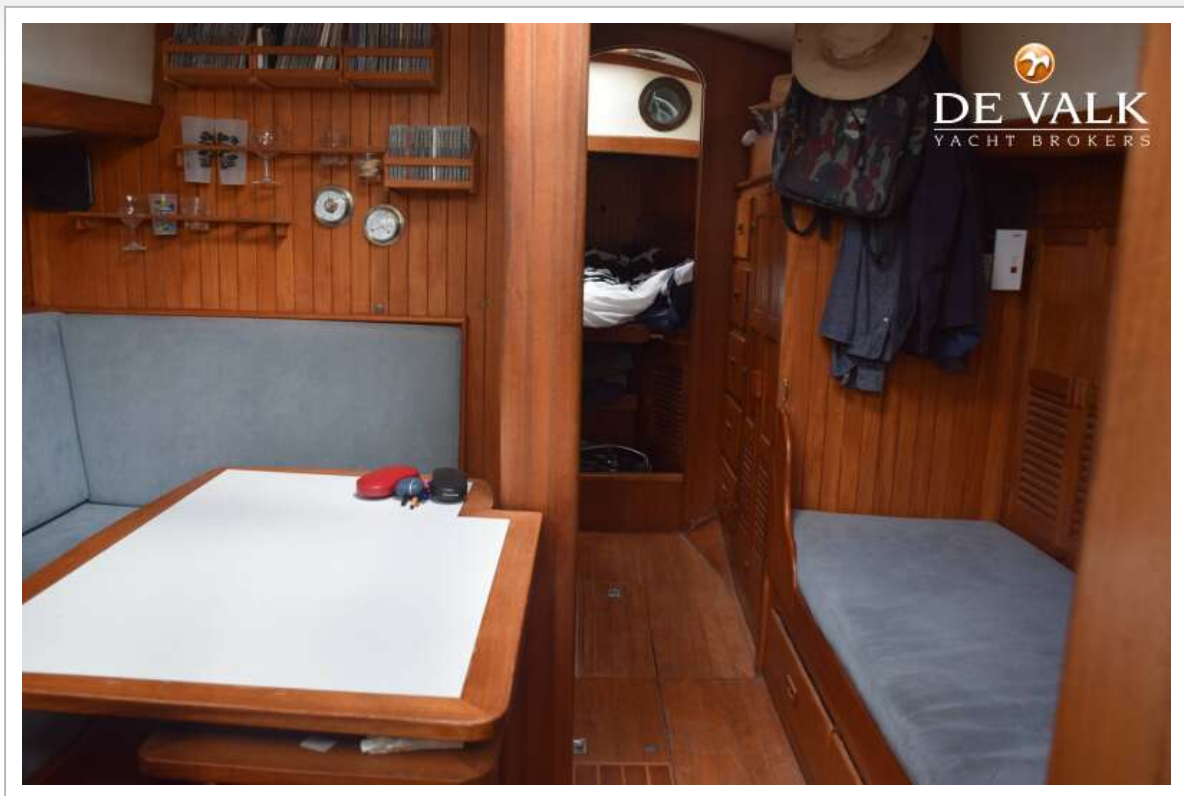
TAYANA 37 PILOTHOUSE



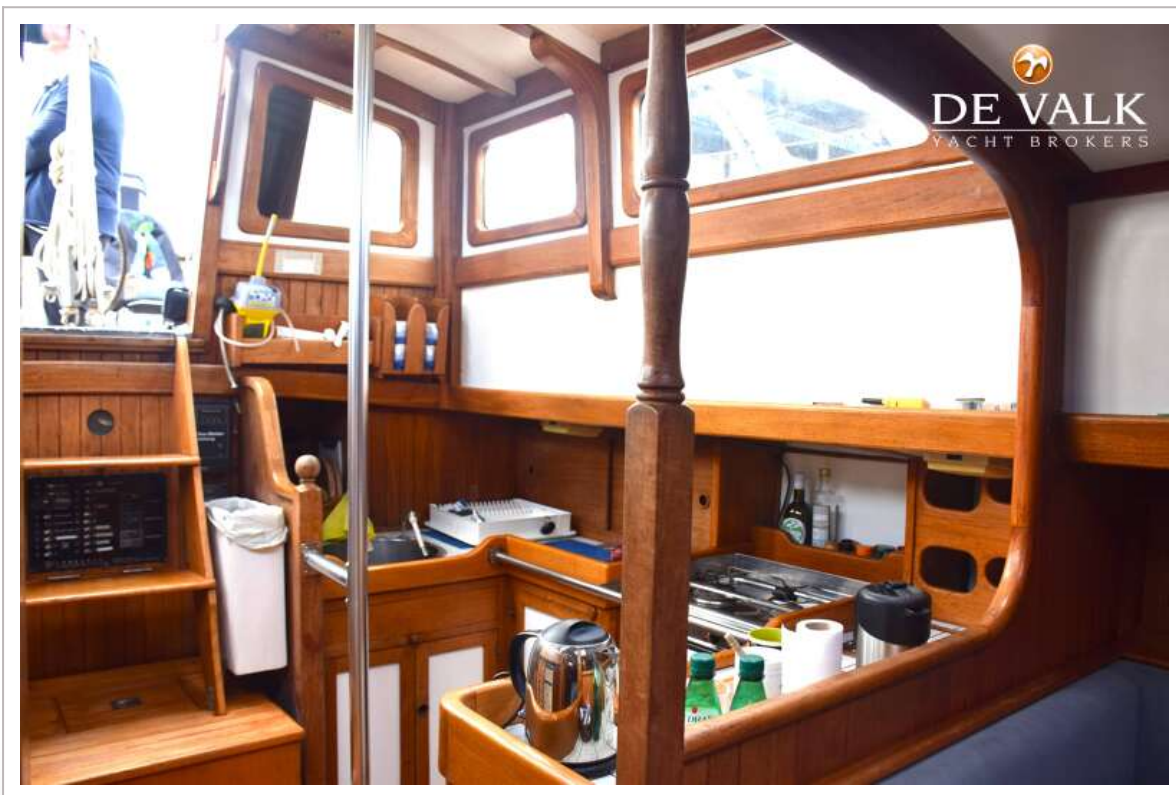
TAYANA 37 PILOTHOUSE



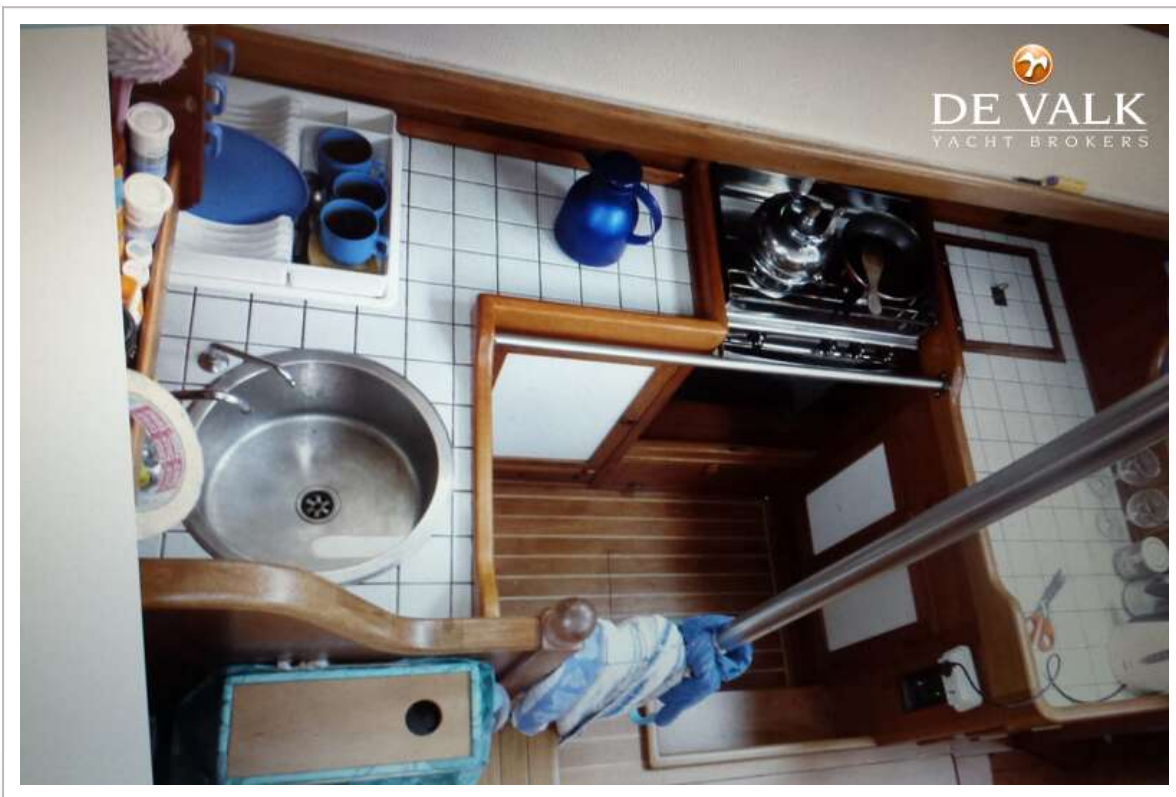
TAYANA 37 PILOTHOUSE



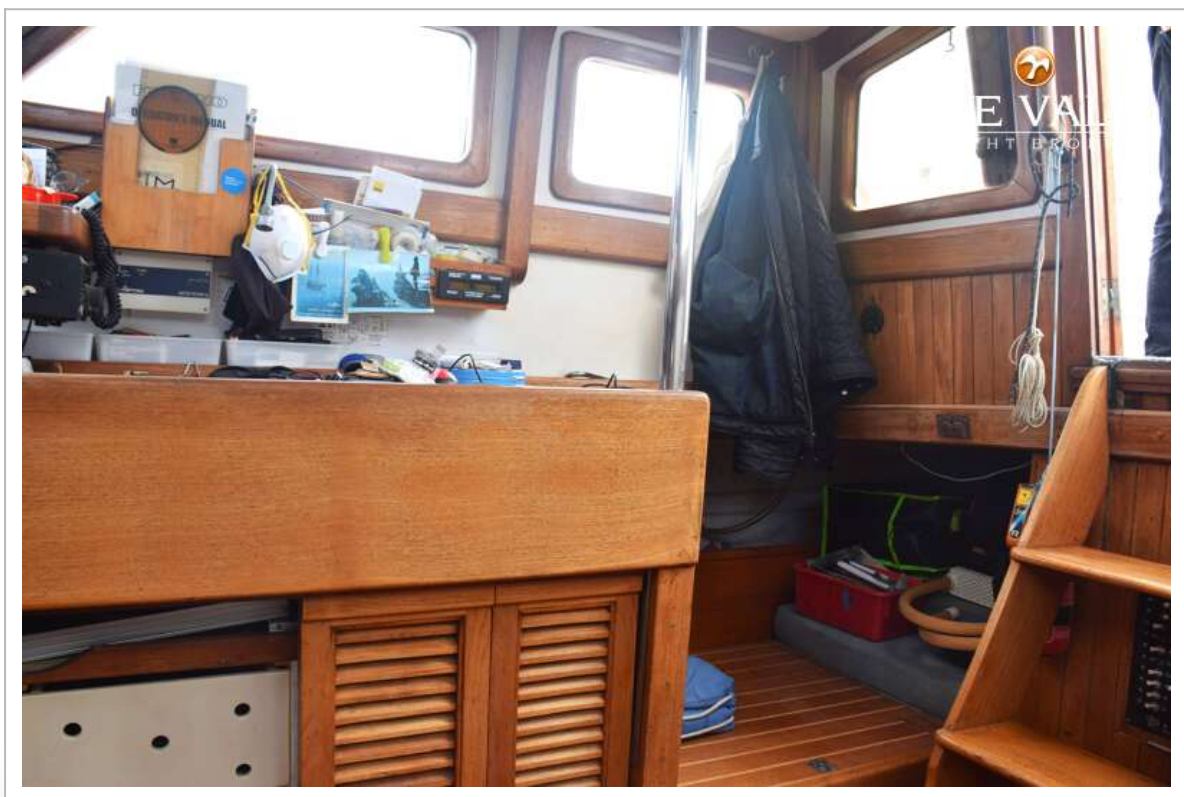
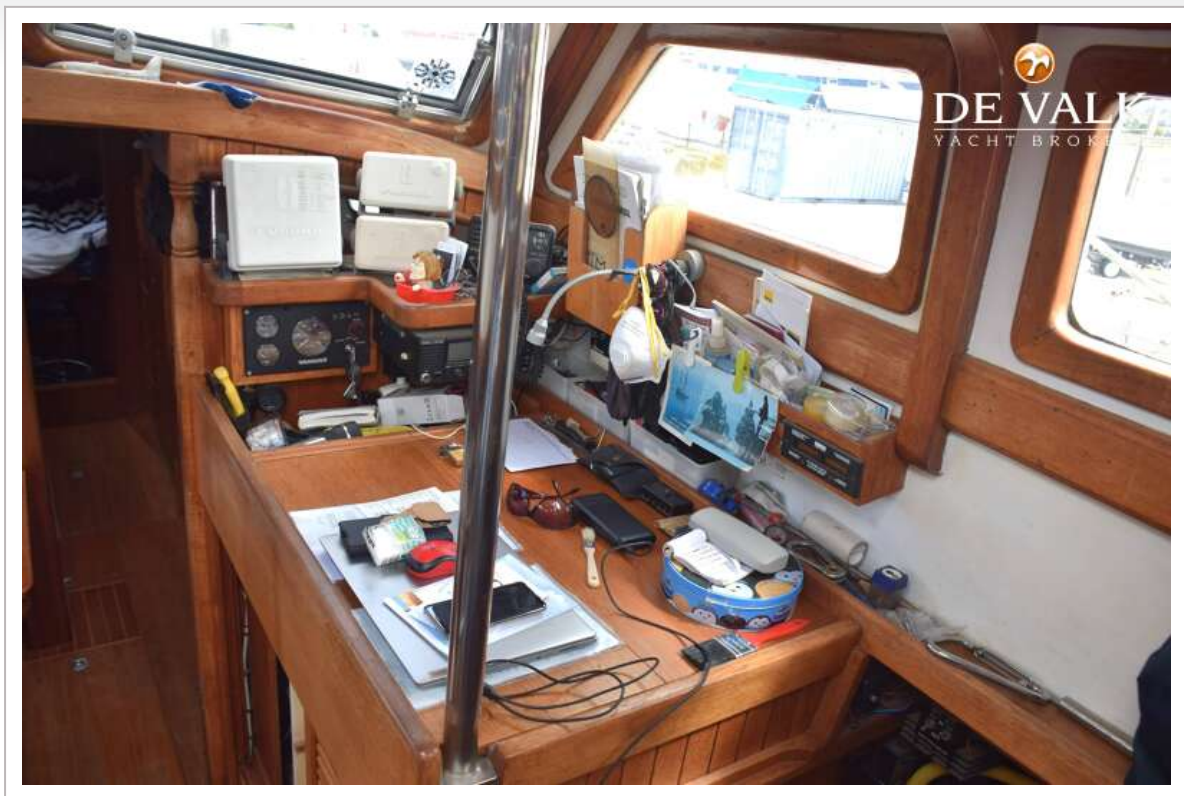
TAYANA 37 PILOTHOUSE



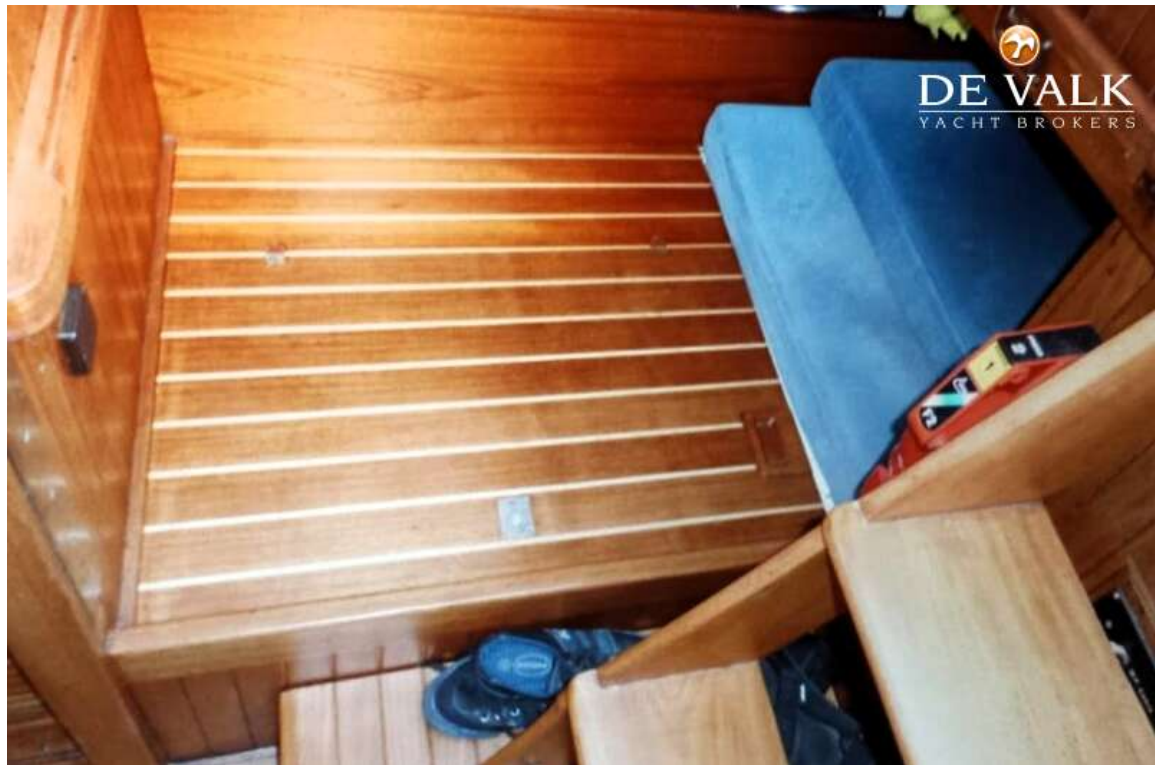
TAYANA 37 PILOTHOUSE



TAYANA 37 PILOTHOUSE



TAYANA 37 PILOTHOUSE



TAYANA 37 PILOTHOUSE

