



GRAND BANKS 42 CLASSIC

GRAND BANKS 42 CLASSIC

BROKER'S COMMENTS

Recognized as the best dependable diesel trawler, the Classic line from the famous Grand Banks yard is hard to copy. Many have tried but none really succeeded. Sturdy and dependable Ford diesels, powerful bowthruster, generator and central heating system. Very good access on deck, ample and light accommodations, twin helm positions and good storage space. Up top on the flybridge full panoramic view and oh so quiet while underway. An often forgotten feature of the flybridge.

Marc Weijenberg

SPECIFICATIONS

| | | | |
|---------------------|------------------------------|----------------|-----------------------------|
| Dimensions | 12.98 x 4.14 x 1.27 (m) | Builder | American Marine Ltd |
| Built | 1990 | Cabins | 2 |
| Material | GRP | Berths | 7 |
| Engine(s) | 2 x Ford Lehman 2725E diesel | Hp/Kw | 2 x 135.00 (hp), 99.22 (kw) |
| Asking price | sold (VAT) | Lying | at sales office |

CONTACT

| | | | |
|---------------------|--|------------------|------------------------|
| Sales office | De Valk Sint Annaland B.V. | Telephone | +31 (0)166 601 000 |
| Address | Koelhuisweg 4 4697 RM Sint Annaland NL | E-mail | sintannaland@devalk.nl |

DISCLAIMER

These particulars are given in good faith as supplied but cannot be guaranteed.



GRAND BANKS 42 CLASSIC

GENERAL

| | |
|----------------------------|------------------------|
| Model | GRAND BANKS 42 CLASSIC |
| Type | motor yacht |
| LOA (m) | 12,98 |
| LWL (m) | 12,43 |
| Beam (m) | 4,14 |
| Draft (m) | 1,27 |
| Air draft (m) | 3,99 |
| Headroom (m) | 2,00 |
| Year built | 1990 |
| Builder | American Marine Ltd |
| Country | Singapore |
| Designer | Ray Hunt |
| Displacement (t) | 14,7 |
| Hull material | GRP |
| Hull colour | white |
| Hull shape | hard chine |
| Keel type | long keel |
| Superstructure material | GRP |
| Rubbing strake | yes |
| Deck material | GRP |
| Deck finish | teak |
| Superstructure deck finish | teak |
| Window frame | wood |
| Window material | glass |
| Deckhatch | yes |
| Flybridge | yes |
| Flybridge cover | partial |
| Mast can be lowered | manual |
| Fuel tank (litre) | steel 2 x 1100 |
| Freshwater tank (litre) | aluminium 3 x 330 |



GRAND BANKS 42 CLASSIC

| | |
|----------------------------|------------------------------|
| Blackwater tank (litre) | polyethylene 1 x 120 |
| Blackwater tank extraction | deck extraction + pump |
| Wheel steering | cable steering |
| Flybridge helm position | cable steering |
| Emergency tiller | yes |
| Extra info | LOA 13,18 mtr |
| Extra info | Air draft mast up: 6,86 mtrs |

ACCOMMODATION

| | |
|-------------------------|------------------------------------|
| Cabins | 2 |
| Berths | 7 |
| Interior | teak |
| Floor | parquet Teak |
| Aft deck | yes |
| Pilot house/deck saloon | with panoramic view |
| Headroom saloon (m) | 2,00 |
| Heating | central heating Webasto DBW46 |
| Chart table | yes |
| Aft Cabin | yes |
| Dinette | L-shape |
| Opening door to cockpit | 2 x |
| Galley | in deck saloon |
| Countertop | plastic |
| Sink | stainless steel 2 |
| Cooker | calor gas Princess 3 burn |
| Oven | Princess |
| Extractor | yes |
| Fridge | with freezer compartment Coolmatic |
| Hot water system | 220V + engine Isotherm |
| Water pressure system | electrical |
| Coffee maker | Senseo |



GRAND BANKS 42 CLASSIC

| | |
|-----------------------------|---|
| Owners cabin | double bed + single bed |
| Bed length (m) | + 2,00 x 0,70 2,00 x 1,40 |
| Wardrobe | hanging/drawers/shelves |
| Bathroom | en suite I |
| Toilet | en suite |
| Toilet system | manual |
| Wash basin | in the bathroom |
| Shower | en suite |
| Guest cabin 1 | v-bed |
| Bed length (m) | 2,00 x 0,80 |
| Wardrobe | hanging/drawers/shelves |
| Bathroom | en suite II |
| Toilet | en suite |
| Toilet system | manual |
| Wash basin | in the bathroom |
| Shower | en suite |
| Extra info | extra fill-in piece for bed |
| Washing machine/dryer combi | (not in use, not connected) Candy |
| Extra info | Classic Birma Teak handcrafted interior with lots of light and ventilation. |

MACHINERY

| | |
|---------------------|-------------|
| No of engines | 2 |
| Make | Ford Lehman |
| Type | 2725E |
| HP | 135,00 |
| kW | 99,22 |
| Fuel | diesel |
| Year installed | 1990 |
| Maximum speed (kn) | 12 |
| Cruising speed (kn) | 7 |



GRAND BANKS 42 CLASSIC

| | |
|--------------------------|----------------------------|
| Consumption (l/hr) | 2 x 7 at 7 knots |
| Engine hours | 1650 |
| Engine cooling system | freshwater heat exchanger |
| Drive | shaft |
| Engine controls | bowden cable |
| Gearbox | mechanical Borg Warner |
| Bowthruster | electric Vetus |
| Exhaust | watercooled |
| Propeller type | fixed |
| Propeller blades | 3 |
| Propeller shaft material | stainless steel |
| Shaft lubrication | water |
| Manual bilge pump | (to be checked) 1 |
| Electric bilge pump | 1 |
| Electrical installation | 12/220 |
| Generator | wet exhaust Westerbeke 6kW |
| Running hours generator | 470 |
| Start battery | 1 x 135 ah |
| Service battery | 2 x 200 ah |
| Bowthruster battery | 2 x 100 ah |
| Battery charger | Mastervolt 12v/35amp |
| Shorepower | with cable |

NAVIGATION

| | |
|----------------------|---|
| Compass | Danforth |
| Compass on flybridge | Danforth |
| Electric compass | via autopilot |
| Depth sounder/log | Brookes & Gatehouse |
| Repeater | at the flybridge |
| VHF | Sailor RT 2048 |
| Autopilot | with remote on flybridge Robertson AP2500 |



GRAND BANKS 42 CLASSIC

| | |
|------------------------|-------------------------------------|
| Rudder angle indicator | yes |
| GPS | with flybridge repeater Philips MK8 |
| Searchlight | hand-held |

EQUIPMENT

| | |
|----------------------------|-------------------|
| Fixed windscreen | yes |
| Sun awning | small awning |
| Cockpit cushions | on flybridge |
| Bathing platform | Teak |
| Boarding ladder | stainless steel |
| Deck shower | yes |
| Anchor | CQR Plough |
| Anchor chain | yes |
| Windlass | electrical Lewmar |
| Capstan | Lewmar |
| Sea railing | teak |
| Grab rail (superstructure) | teak |
| Railing side opening gates | 2 |
| Pushpit | yes |
| Pulpit | yes |
| Lifebuoy | 2 x |
| Horn | air pressure |
| Fenders | yes |
| Mooring lines | yes |
| Speakers in salon | yes |
| Clock - barometer | yes |
| Extra info | Blaupunkt radio |



GRAND BANKS 42 CLASSIC



GRAND BANKS 42 CLASSIC



GRAND BANKS 42 CLASSIC



GRAND BANKS 42 CLASSIC



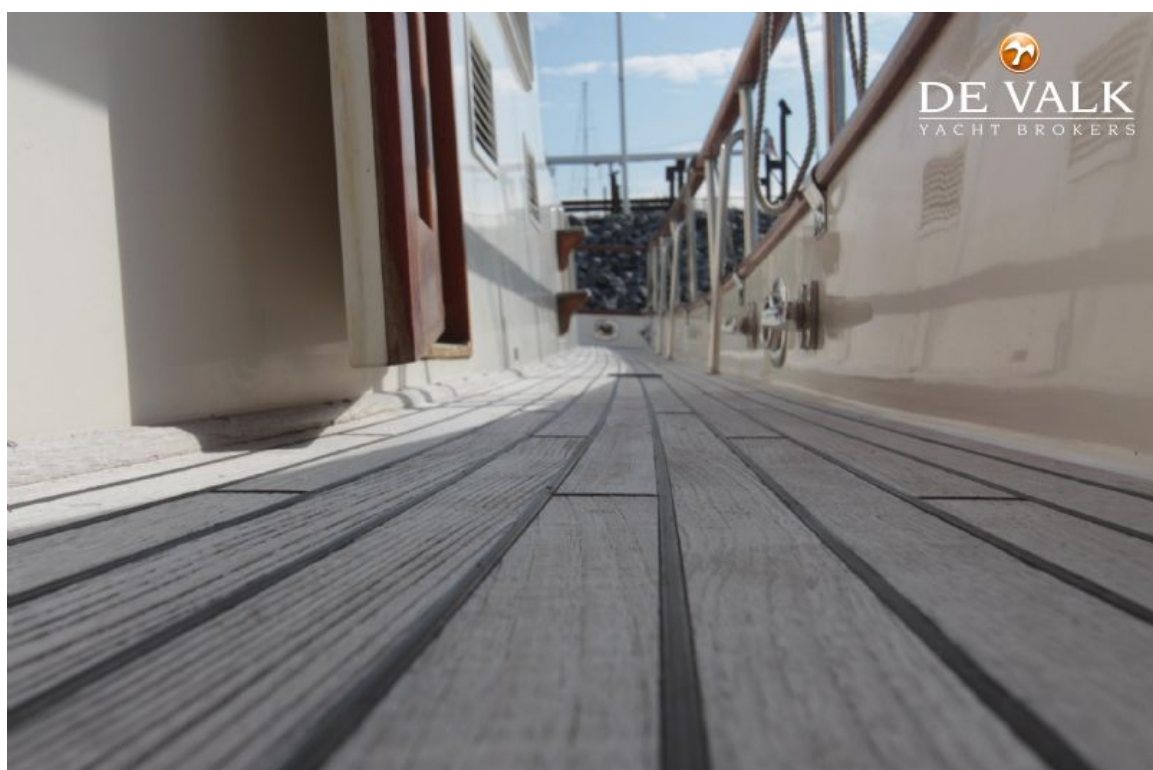
GRAND BANKS 42 CLASSIC



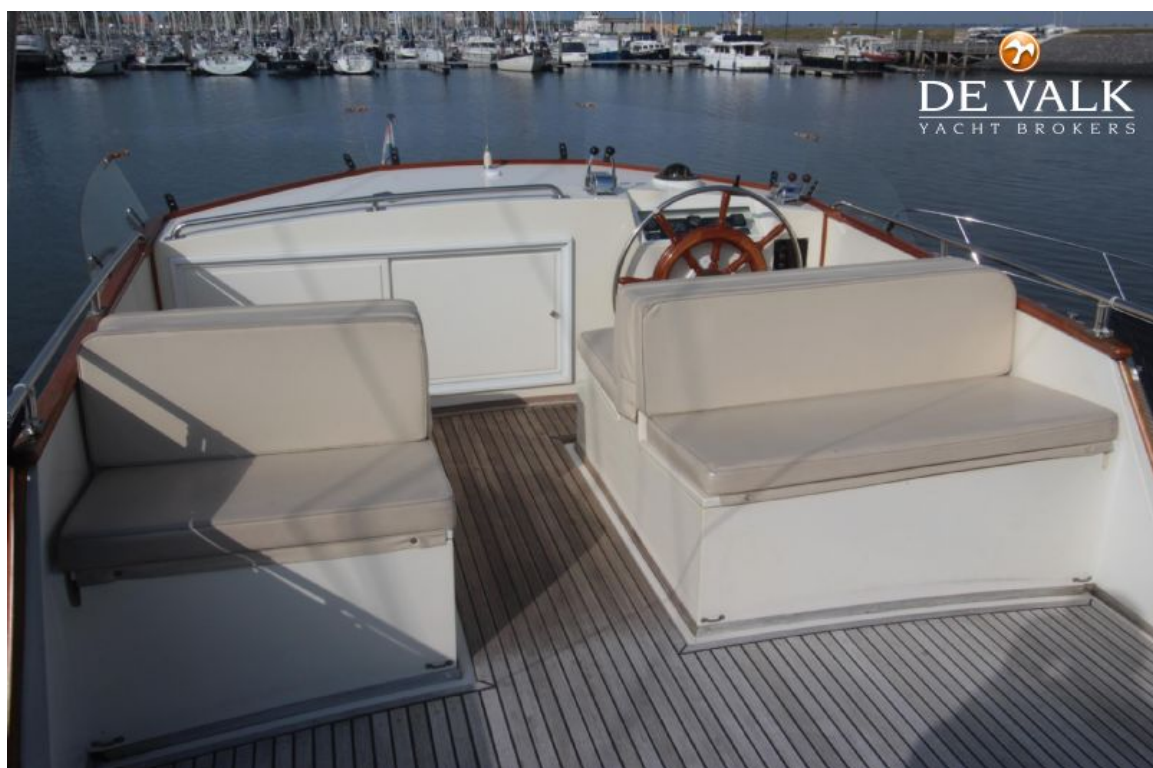
GRAND BANKS 42 CLASSIC



GRAND BANKS 42 CLASSIC



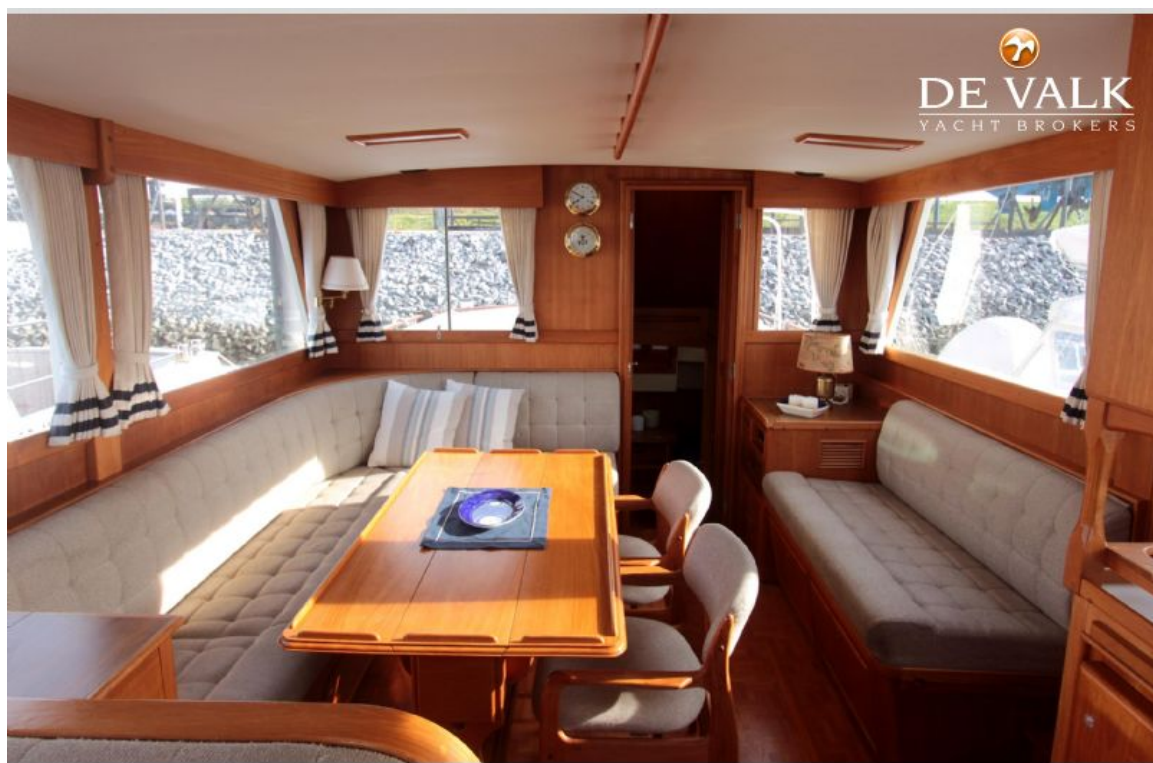
GRAND BANKS 42 CLASSIC



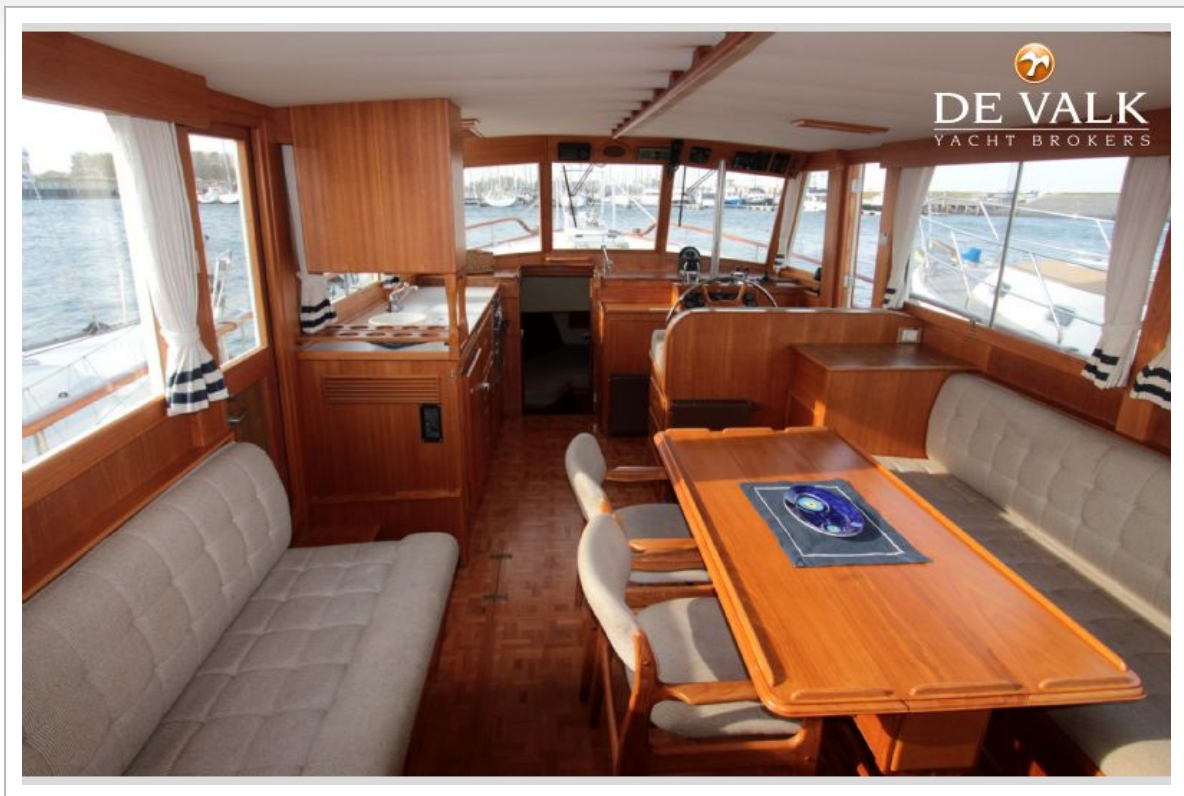
GRAND BANKS 42 CLASSIC



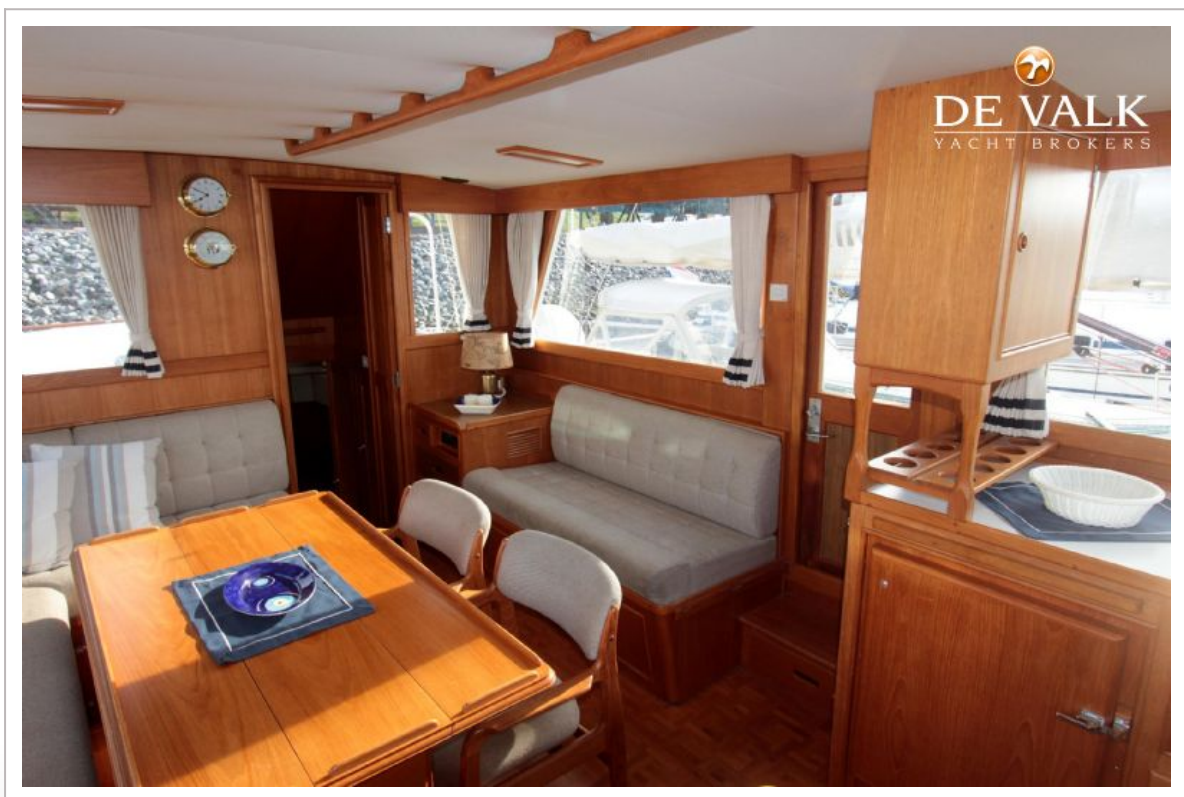
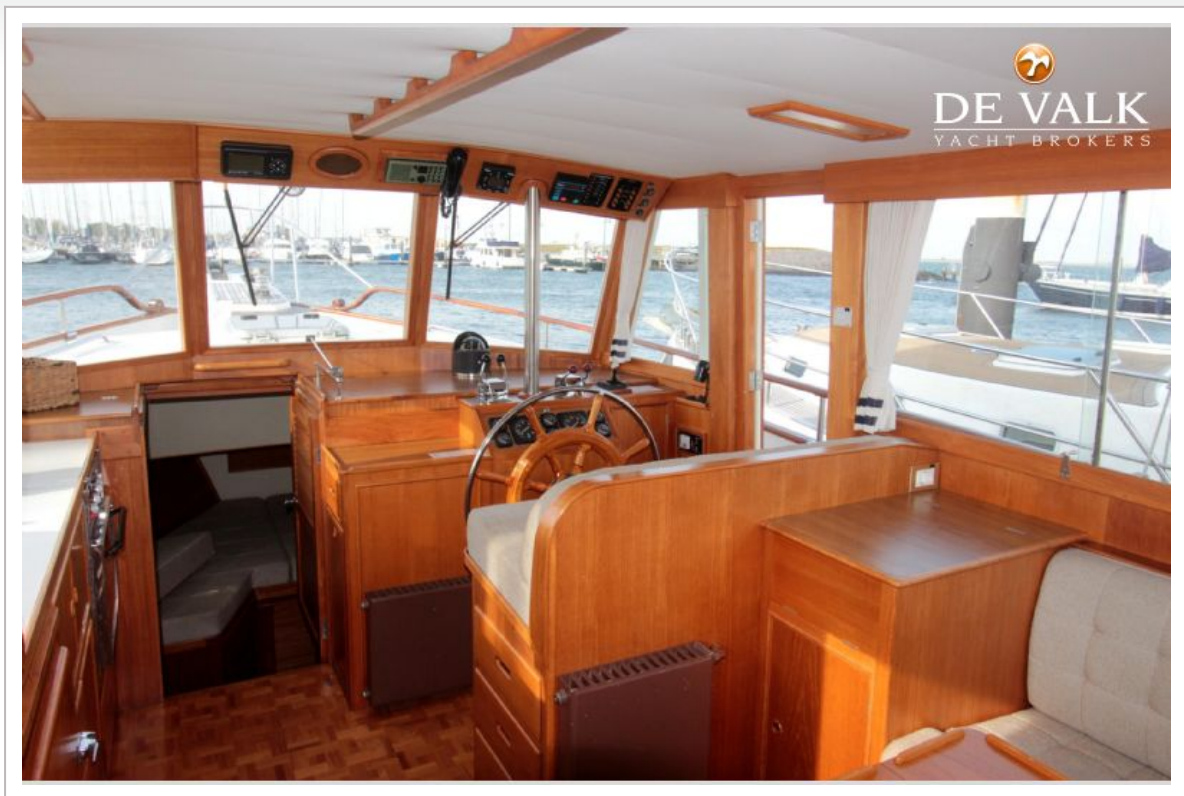
GRAND BANKS 42 CLASSIC



GRAND BANKS 42 CLASSIC



GRAND BANKS 42 CLASSIC



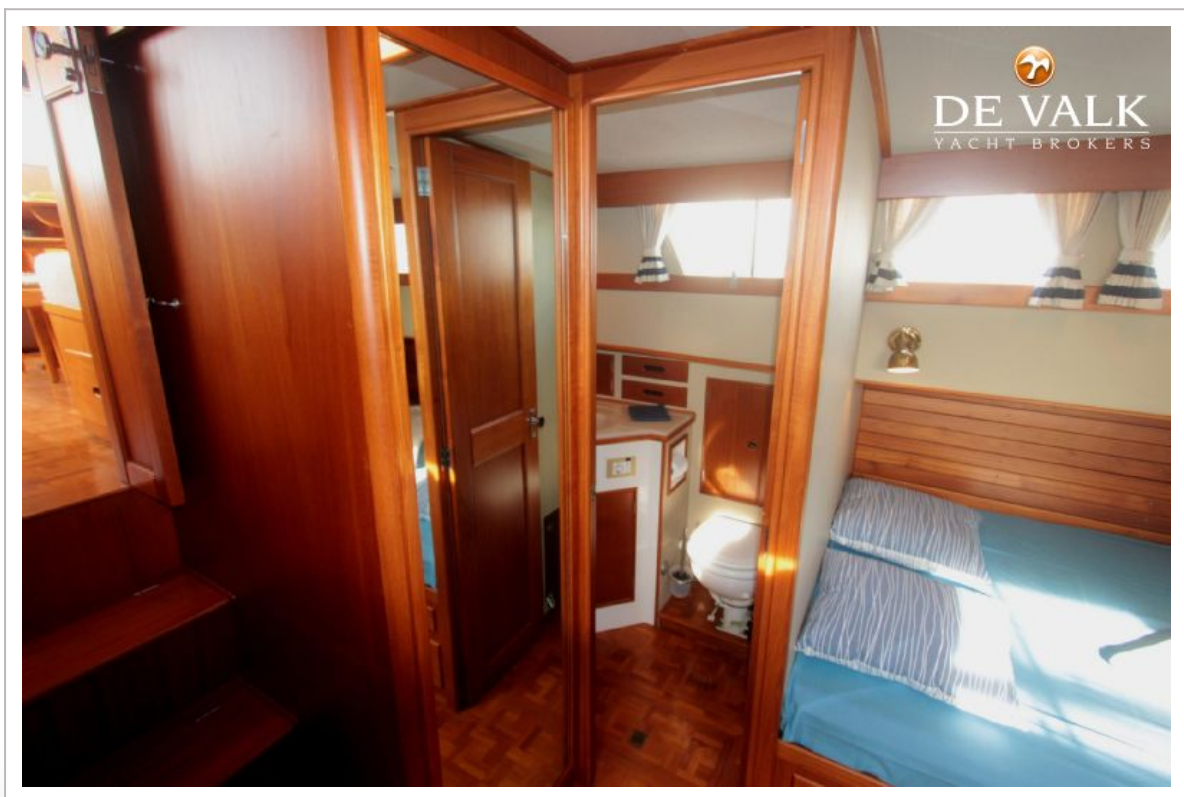
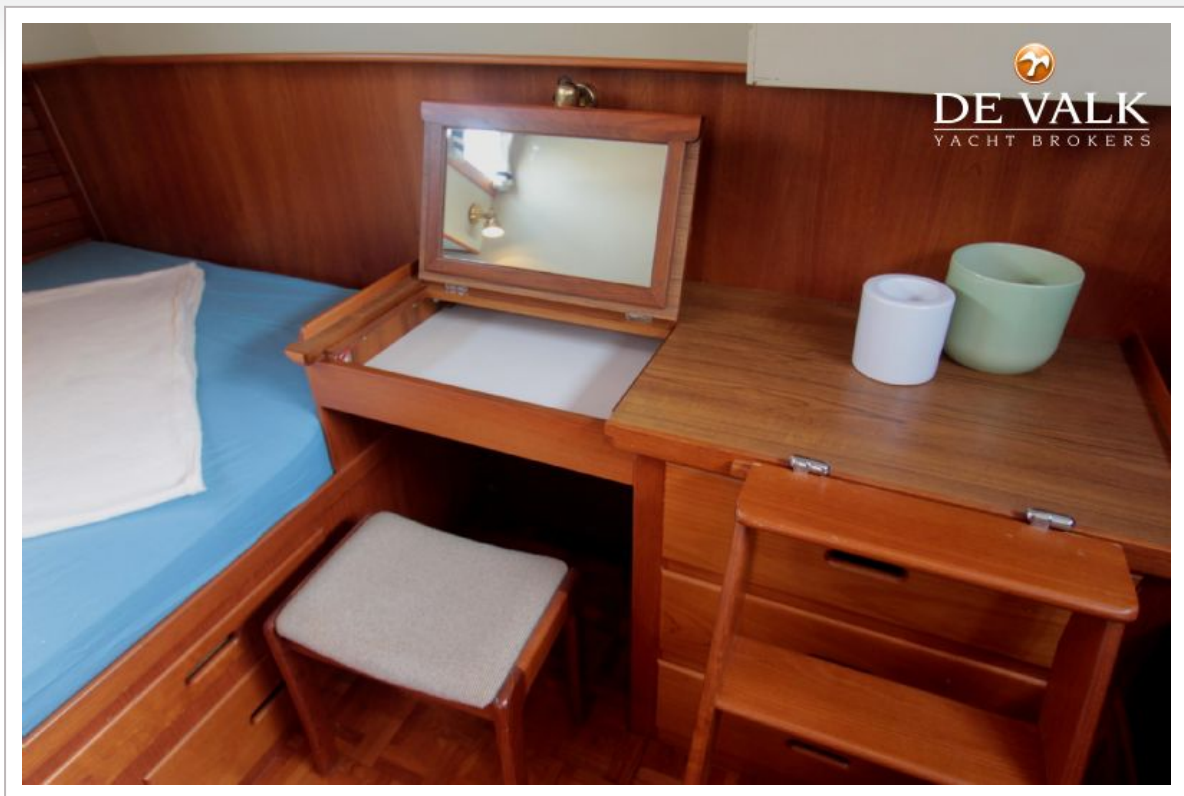
GRAND BANKS 42 CLASSIC



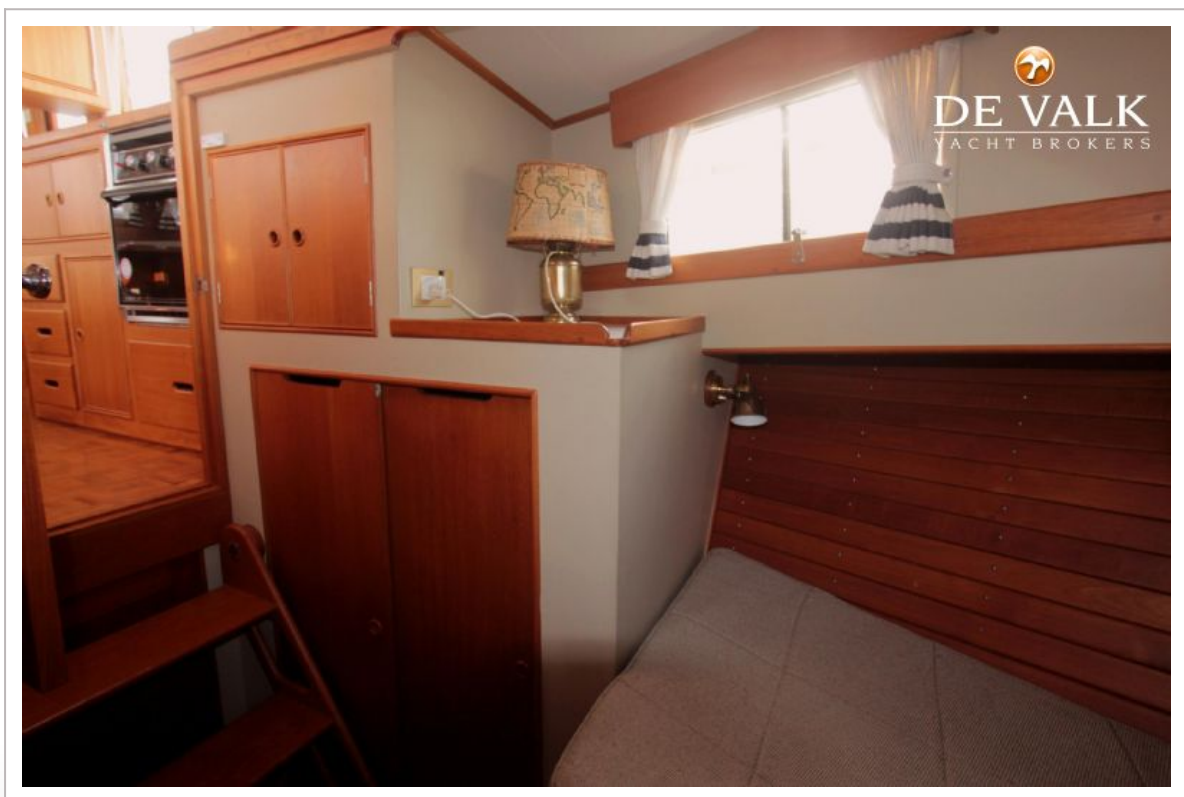
GRAND BANKS 42 CLASSIC



GRAND BANKS 42 CLASSIC



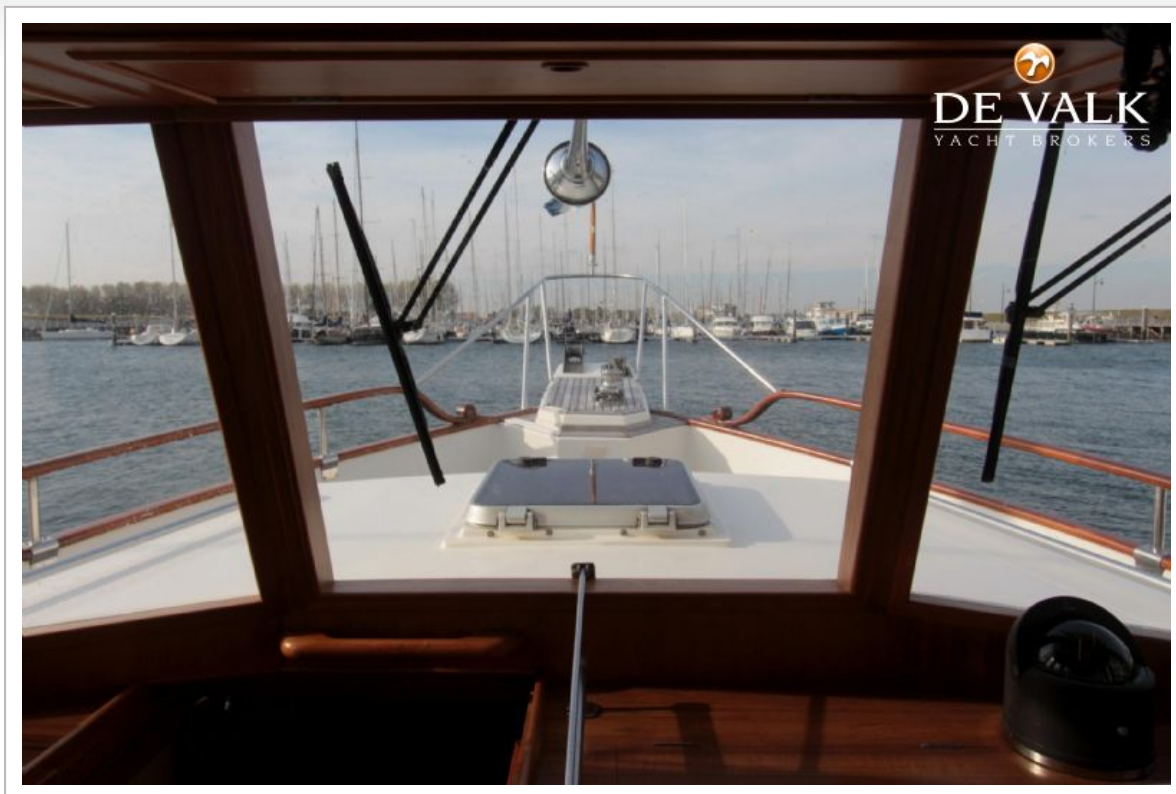
GRAND BANKS 42 CLASSIC



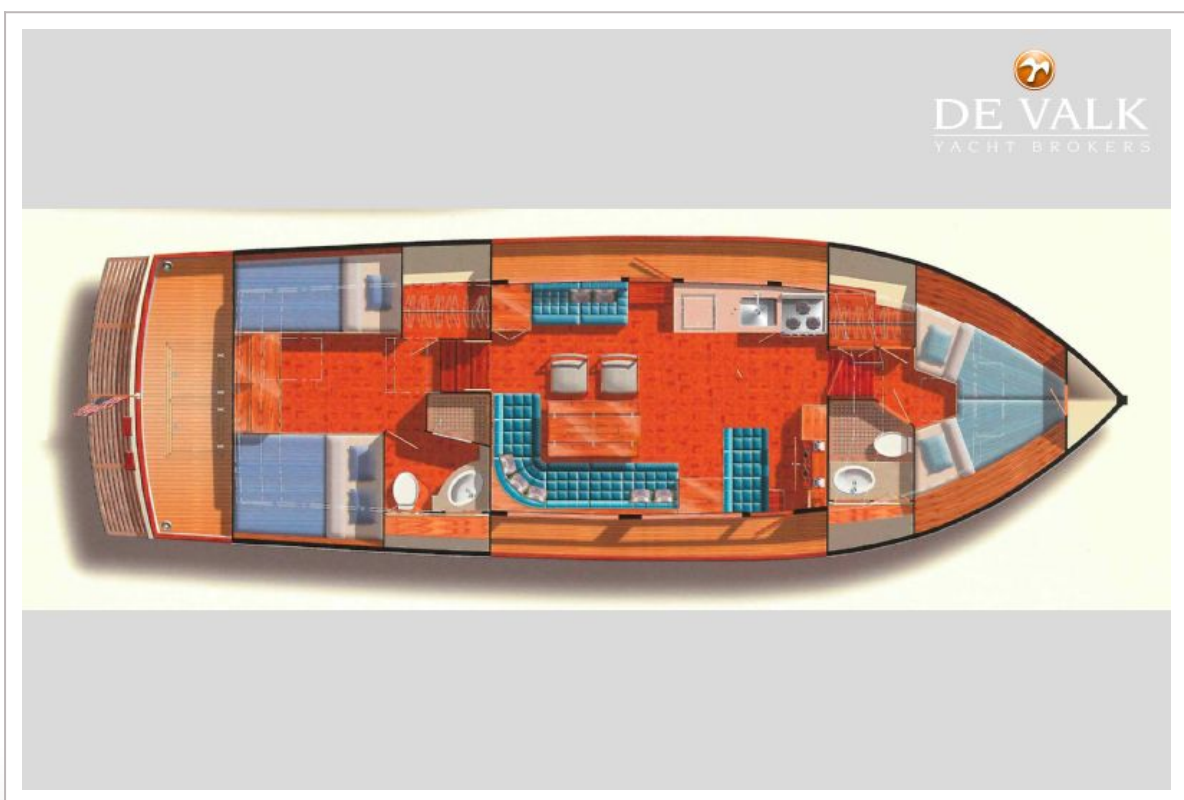
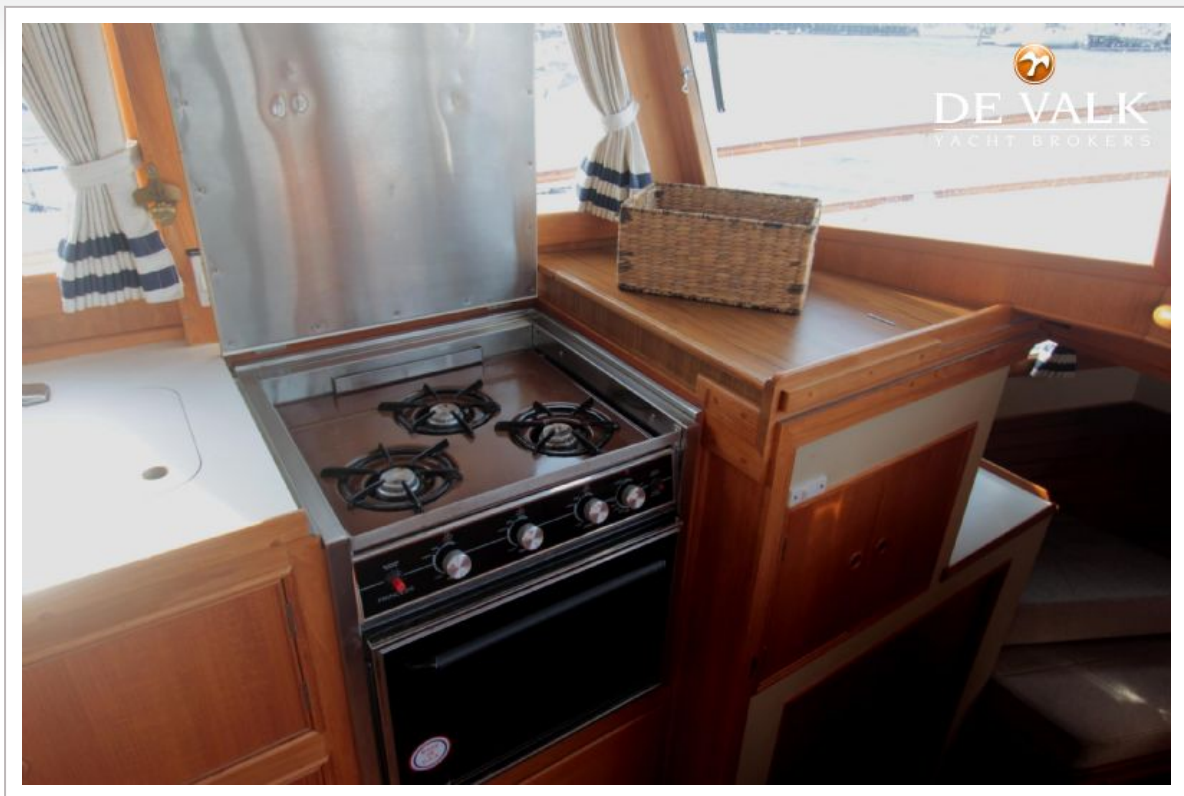
GRAND BANKS 42 CLASSIC



GRAND BANKS 42 CLASSIC



GRAND BANKS 42 CLASSIC



GRAND BANKS 42 CLASSIC



GRAND BANKS 42 CLASSIC



GRAND BANKS 42 CLASSIC

