



DE VALK
YACHT BROKERS



DUBOIS 90 PILOTHOUSE



DE VALK
YACHT BROKERS

DUBOIS 90 PILOTHOUSE

BROKER'S COMMENTS

The opportunity to become the owner of the famous Antwerp Flyer is offered to you. Do you want to give courses, work on team building, or provide sailtrainings on a ocean going yacht? this is a very good choice. Many young Belgians learned to sail on this yacht or accompanied during the Tall Ship Races. This aluminium yacht has a traditional deklayout and rigging for long sea voyages. Inside, the yacht is designed to accommodate multiple guests and crew in different cabins.

Stef Struijk

SPECIFICATIONS

Dimensions	27.45 x 6.40 x 3.00 (m)	Builder	Chantier Navals Le Biot
Built	1990	Cabins	6
Material	Aluminium	Berths	21
Engine(s)	1 x Iveco Turbo diesel	Hp/Kw	380.00 (hp), 279.30 (kw)
Asking price	sold (VAT)	Lying	elsewhere / Not at sales office

CONTACT

Sales office	De Valk Sint Annaland B.V.	Telephone	+31 166 601 000
Address	Koelhuisweg 4 4697 RM Sint Annaland NL	E-mail	sintannaland@devalk.nl

DISCLAIMER

These particulars are given in good faith as supplied but cannot be guaranteed.



DUBOIS 90 PILOTHOUSE

GENERAL

Model	DUBOIS 90 PILOTHOUSE
Type	sailing yacht
LOA (m)	27,45
Beam (m)	6,40
Draft (m)	3,00
Air draft (m)	32,00
Headroom (m)	2,00
Year built	1990
Launched	1991
Builder	Chantier Navals Le Biot
Country	France
Designer	Ed Dubois
Displacement (t)	72
Ballast (tonnes)	lead 18
Hull material	aluminium
Hull colour	white
Hull shape	round-bilged Rondspant
Keel type	fin keel
Deck material	aluminium
Deck finish	cork
Superstructure deck finish	paint
Window frame	aluminium
Window material	double glazing
Insulation	rockwool
Radar arch	non collapsible
Fuel tank (litre)	aluminium 2x 1200
Level indicator (fuel tank)	Peilglas
Fuel daytank (litre)	200
Level indicator (daytank)	Peilglas
Freshwater tank (litre)	3000



DUBOIS 90 PILOTHOUSE

Blackwater tank (litre)	350
Greywater tank (litre)	30
Wheel steering	hydraulic Stuurwiel + noodhelmstok
Inside helm position	yes
Emergency tiller	yes
More info on hull	Every year one shore once for maintainance and atifouling

ACCOMMODATION

Cabins	6
Berths	21
Crew cabin	yes
Crew berths	6
Interior	nut
Floor	carpet
Pilot house	yes
Headroom saloon (m)	2,00
Heating	central hot water Webasto
Chart table	In pilothouse
Galley	yes
Countertop	corian
Sink	stainless steel
Cooker	calor gas 4-burner
Oven	Hot air
Extractor	2x Zanussi
Microwave	1
Fridge	2
Freezer	1
Hot water system	220V + engine And heating
Water pressure system	electrical
Owners cabin	double bed
Bed length (m)	2,00 x 1,50



DUBOIS 90 PILOTHOUSE

Wardrobe	hanging/drawers/shelves
Bathroom	en suite
Toilet	en suite
Shower	en suite
Guest cabin 1	double bed + single bed
Bed length (m)	200x 120 and 1x 200x 61
Wardrobe	hanging and shelves
Bathroom	en suite
Toilet	en suite
Toilet system	manual
Wash basin	at the toilet
Guest cabin 2	All guest cabins are alike
Guest cabin 3	All guest cabins are alike
Guest cabin 4	All guest cabins are alike
Extra info	Stainless steel fryer in galley
Extra info	6 toilets and showers in total

MACHINERY

No of engines	1
Make	Iveco Turbo
HP	380,00
kW	279,30
Fuel	diesel
Year installed	1993
Cruising speed (kn)	12,4
Engine hours	8526 (24-10-2015)
Engine cooling system	freshwater heat exchanger
Drive	shaft
Engine controls	hydraulic
Propeller type	fixed
Propeller blades	3



DUBOIS 90 PILOTHOUSE

Propeller shaft material	stainless steel 60 mm
Shaft lubrication	water Renewed 2015
Manual bilge pump	3x
Electric bilge pump	4x 220/24v
Bilge alarm	yes
Electrical installation	24/12/220
Generator	wet exhaust Perkins 12KVA (1993)
Generator 2	wet exhaust Mastervolt 3KVA (2006)
Start battery	1x 150 amp
Service battery	8x 180 amp
Generator battery	1x 150 amp (+ 1x emergency batterie for navigation)
Battery charger	Victron 50
Battery charger/inverter	Mastervolt 24/220 track turbo
Shorepower	with cable

NAVIGATION

Compass	2 x Sestrel
Electric compass	In chartsystem
Depth sounder	B&G Focus
Log	B&G Focus
Windset	B&G Focus
Repeater	B&G Focus
VHF	Sailor RT5022
VHF handheld	Icom ICM33
Autopilot	No
Radar	Furuno 36
GPS	Furuno GP32 and Garmin 126 (independent)
Plotter	Computer
Personal computer	Acer with printer
Electronic chart(s)	On computer
AIS transponder	Furuno universal FA-150



DUBOIS 90 PILOTHOUSE

Radio receiver	MF/HF Sperry HC4500B Liton Marine system
EPIRB	SART

EQUIPMENT

Fixed windscreen	yes
Storm blinds	yes
Bathing platform	yes
Boarding ladder	yes
Deck shower	Hot & cold
Anchor	CQR Plough 50kg
Anchor chain	+/- 60 mtr.
Anchor 2	Danforth
Windlass	electrical Elvea 243000W
Dinghy	rigid inflatable
Outboard	15 HP
Davits	stainless steel
Sea railing	wire
Grab rail (superstructure)	aluminium
Railing side opening gates	yes
Life raft (pers)	container
Last life raft survey	2015
Lifejackets	24 (2015)
Safety harness	24
Horn	electric
Radar reflector	yes
Fenders	yes
Mooring lines	yes
Radio-cd player	yes
Cockpit speakers	yes
Speakers in salon	yes
Clock - barometer	yes



Fire extinguisher	yes
Latest extinguisher survey	2015

RIGGING

Rigging	sloop-cutter
Standing rigging	wire
Brand mast	Marechal
Material mast	aluminium coated
Spreaders	3-pairs
Keel stepped mast	yes
Mainsail	172 m2, Wittevrongel 2004
Mainsail cover	yes
Cutterstay	yes
Genoa I	160 m2 Wittevrongel 2006
Genoa furler	Reckman
Staysail	80m2 Carat
Yankee	120m2 Carat
Reefing System	slabreefing
Primary sheet winch	2x bariant
Genoa sheetwinches	2x combined with grinder
Halyard winches	8x
Multifunctional winches	2x 52ST Andersen mainsheettraveller
Spi-pole	aluminium



DUBOIS 90 PILOTHOUSE



DUBOIS 90 PILOTHOUSE



DUBOIS 90 PILOTHOUSE



DUBOIS 90 PILOTHOUSE



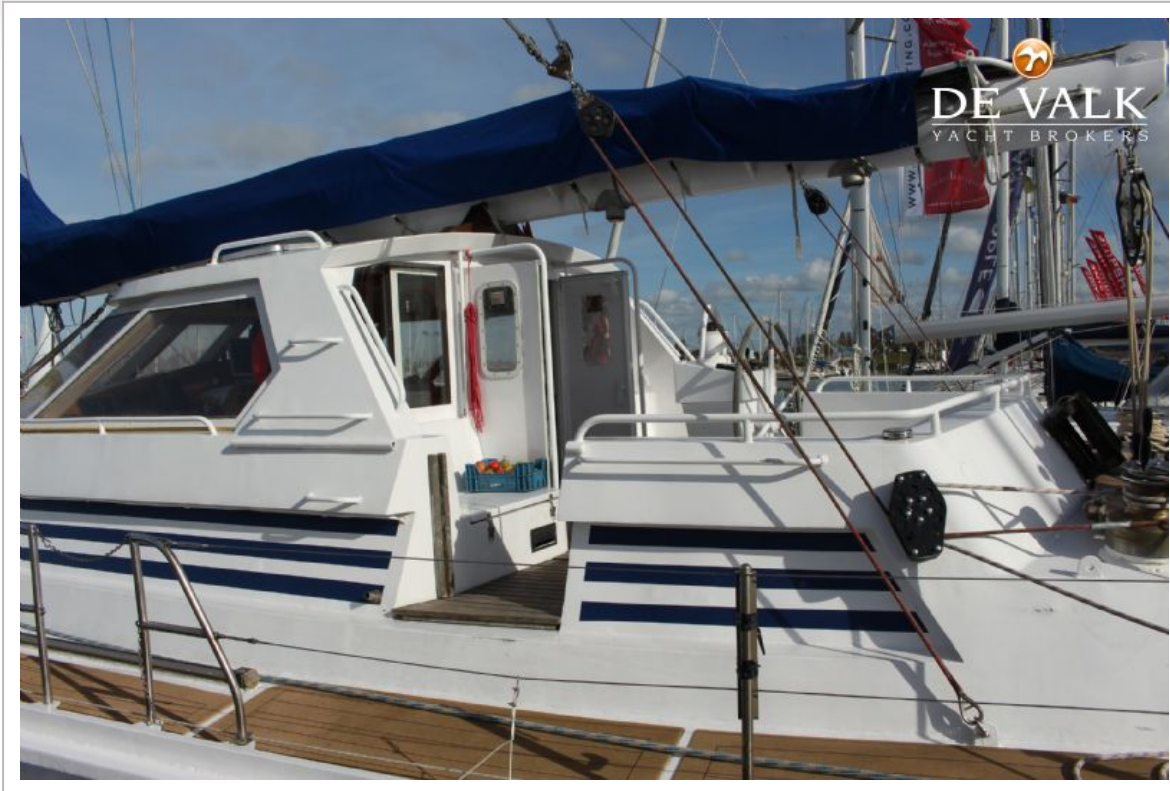
DUBOIS 90 PILOTHOUSE



DUBOIS 90 PILOTHOUSE



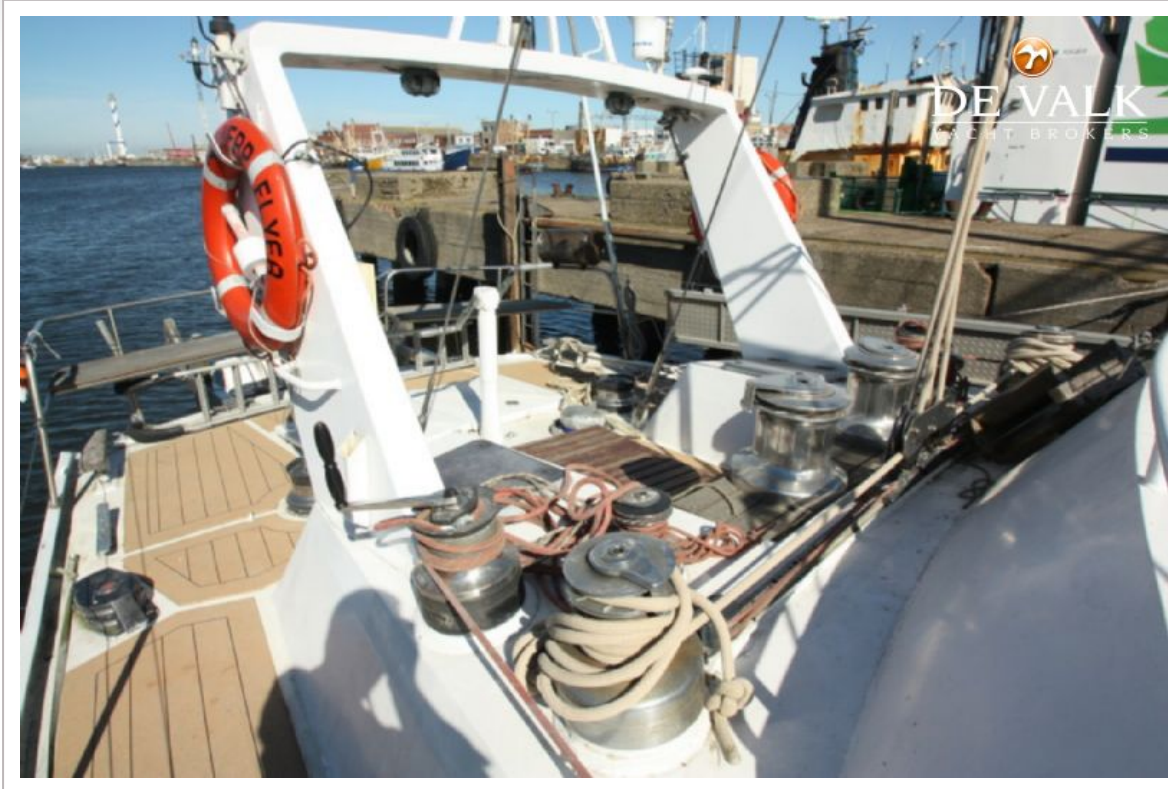
DUBOIS 90 PILOTHOUSE



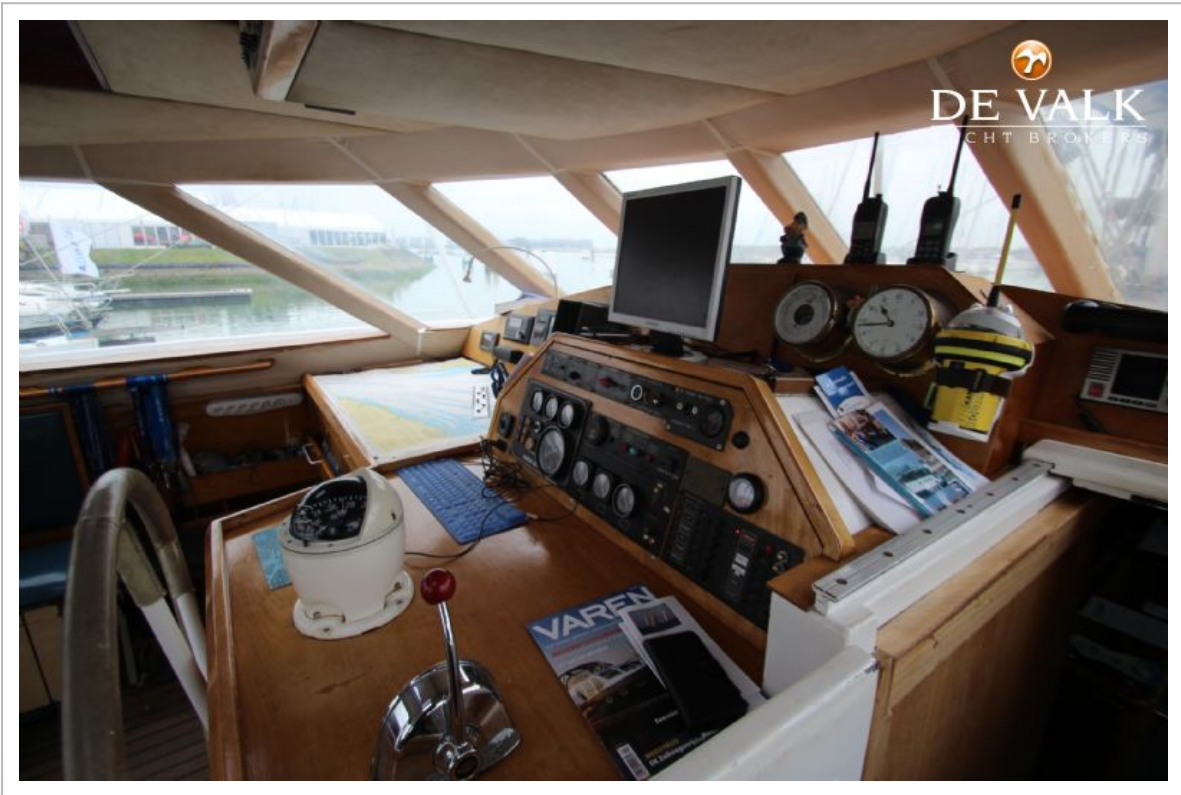
DUBOIS 90 PILOTHOUSE



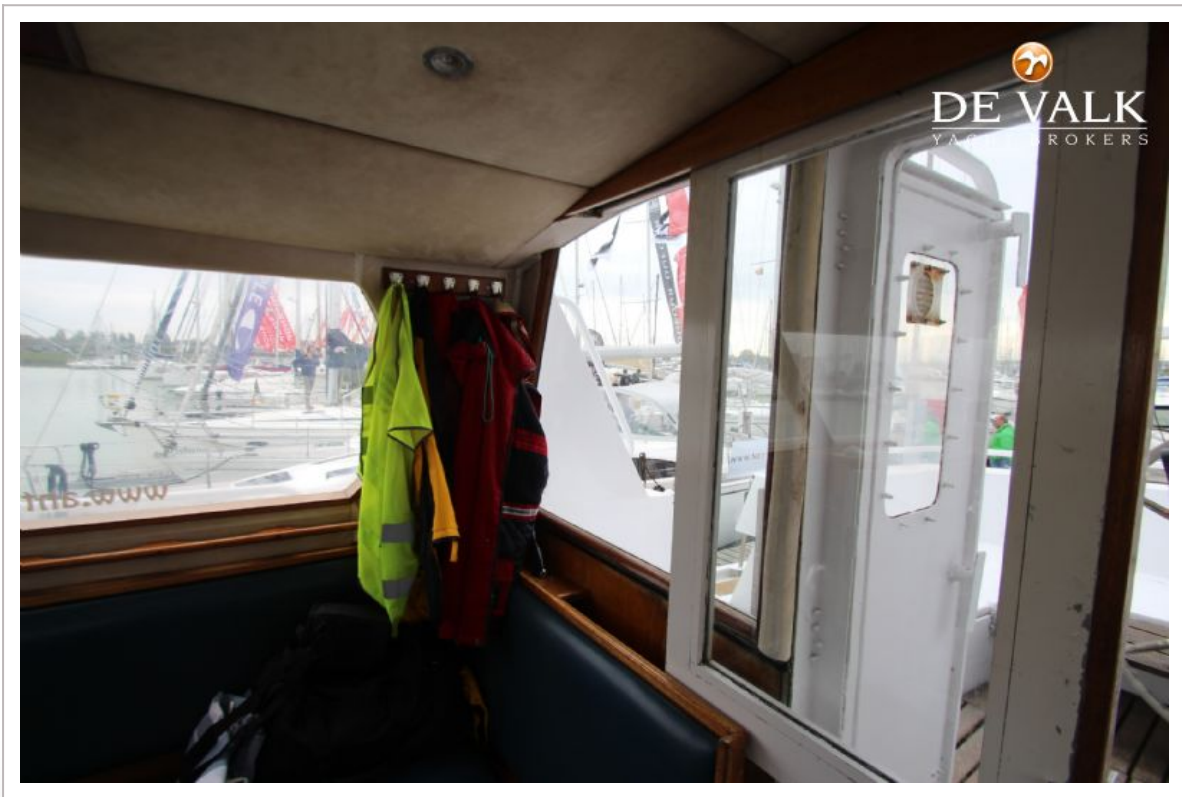
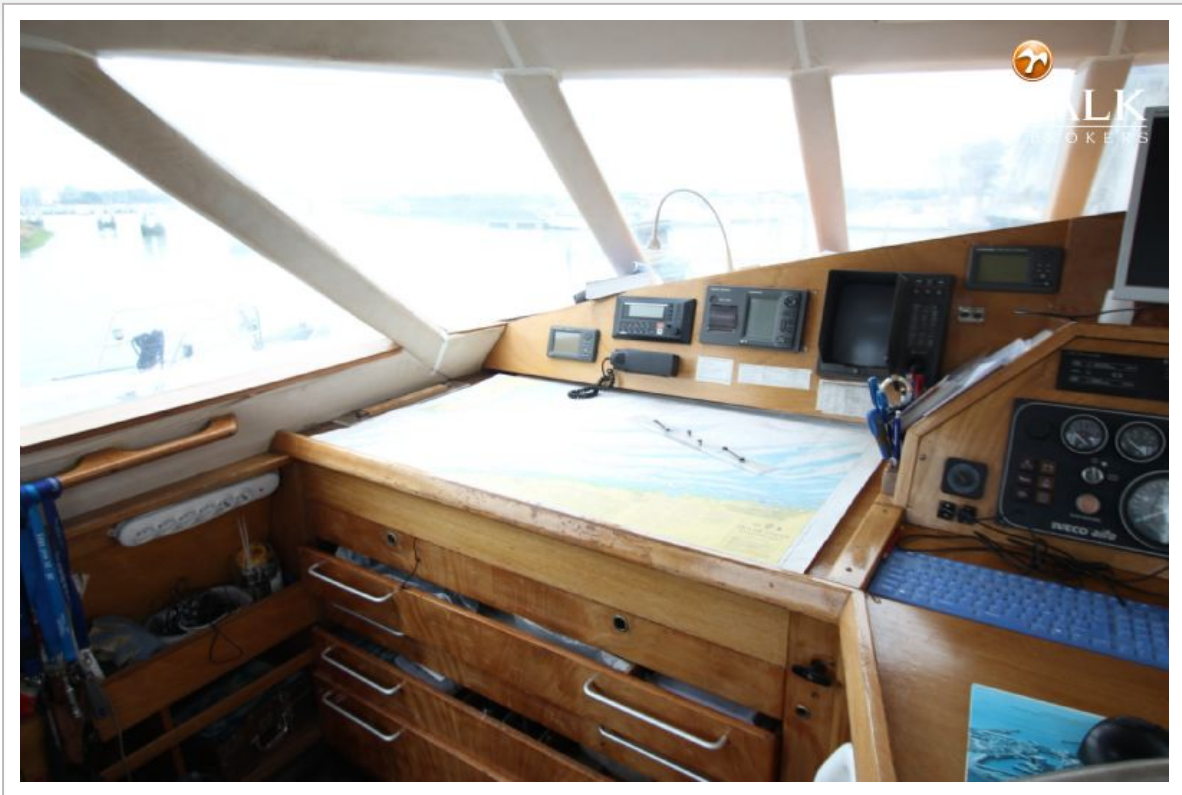
DUBOIS 90 PILOTHOUSE



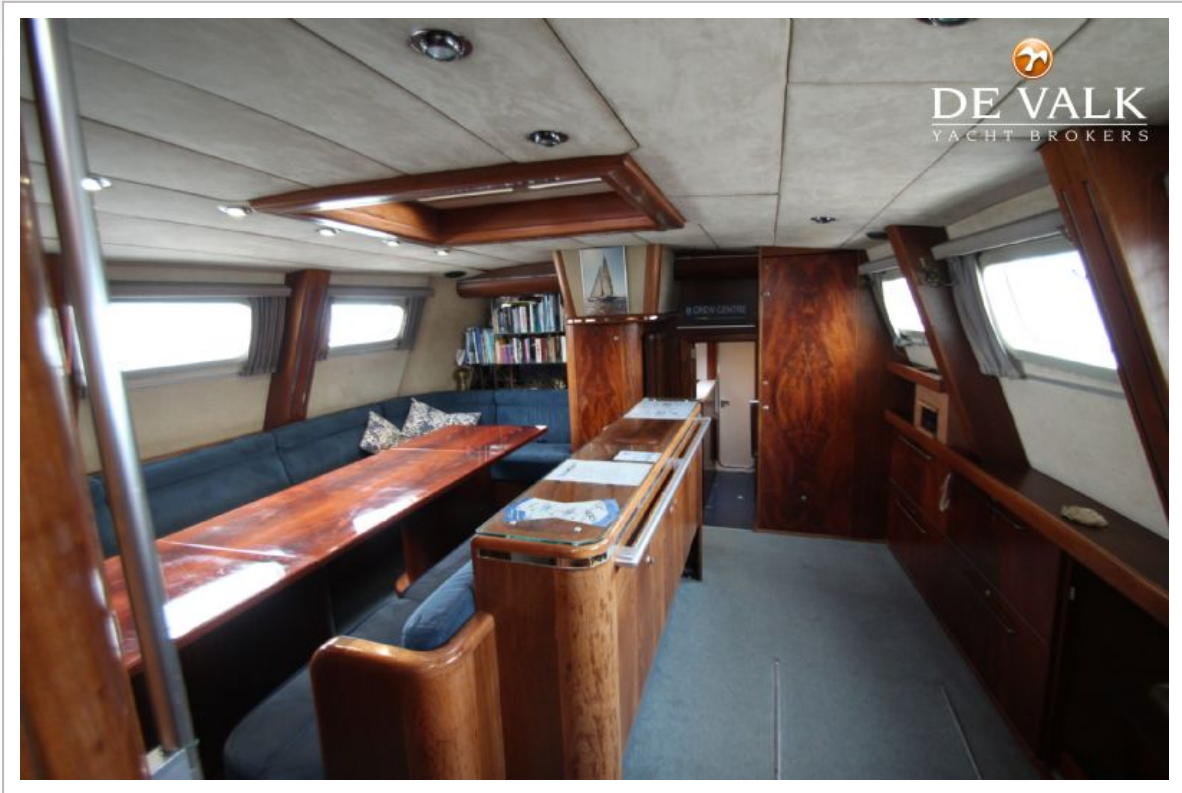
DUBOIS 90 PILOTHOUSE



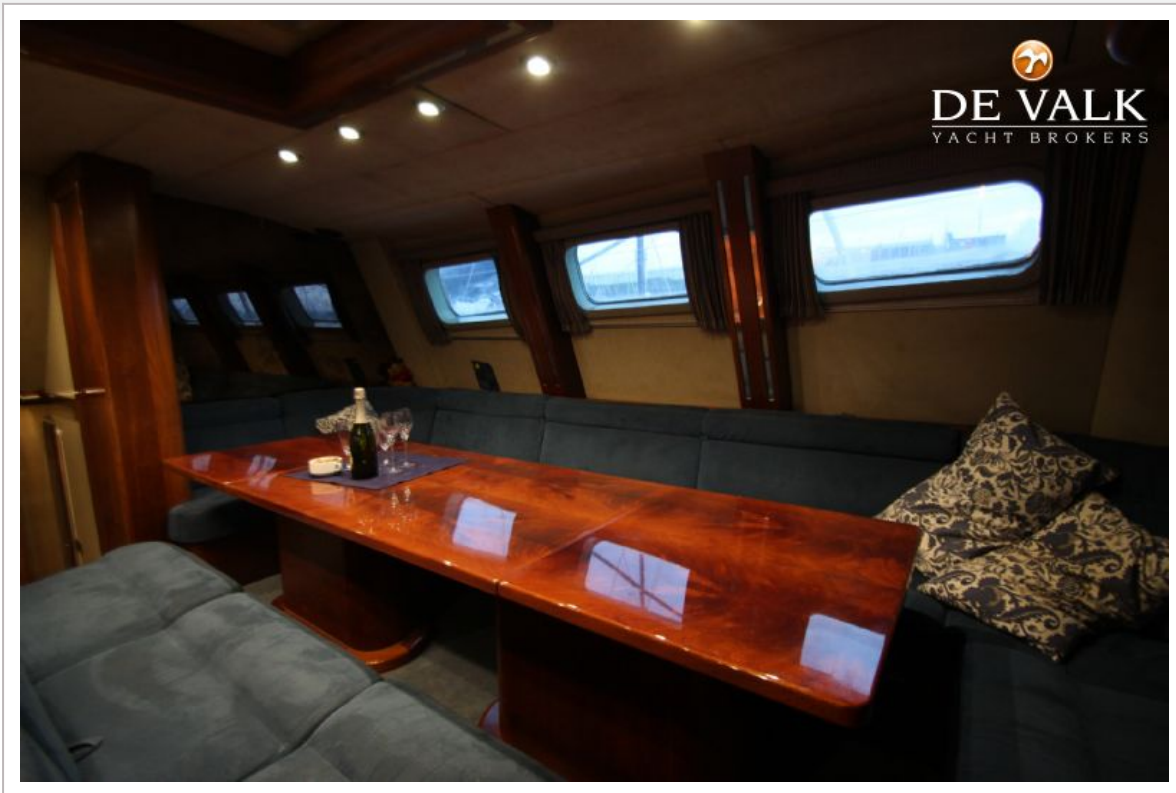
DUBOIS 90 PILOTHOUSE



DUBOIS 90 PILOTHOUSE



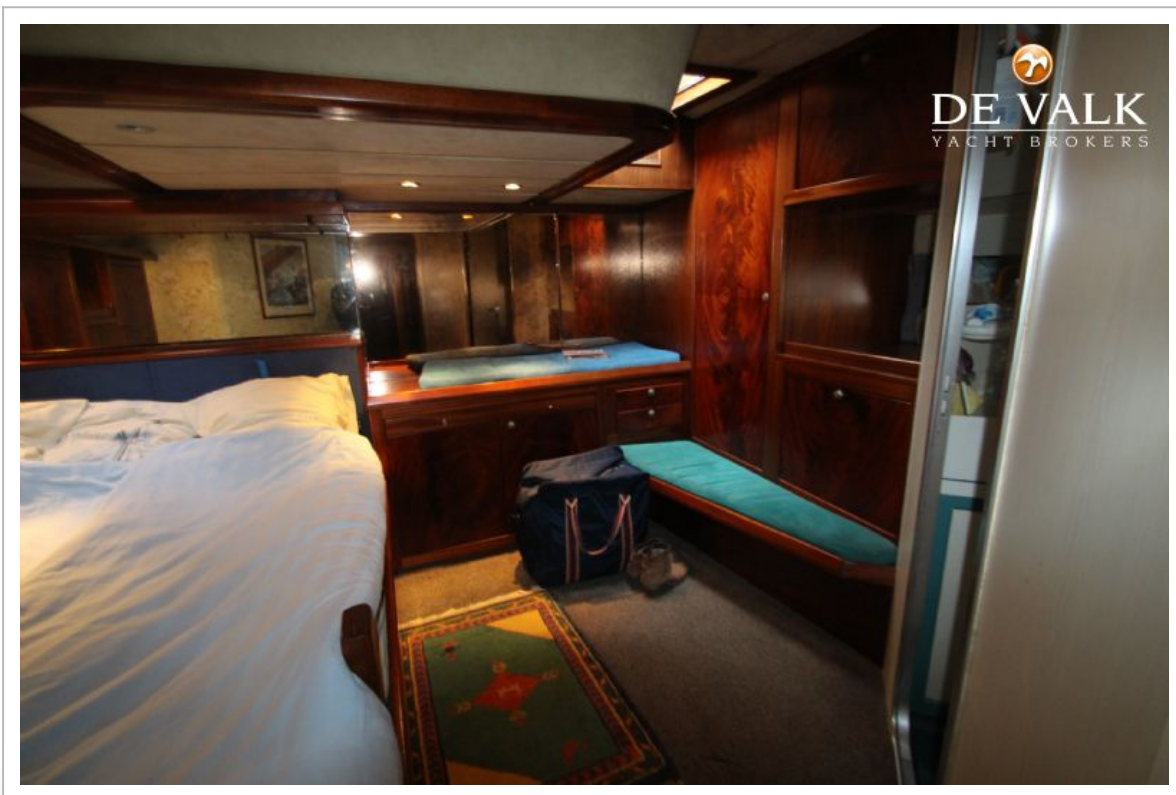
DUBOIS 90 PILOTHOUSE



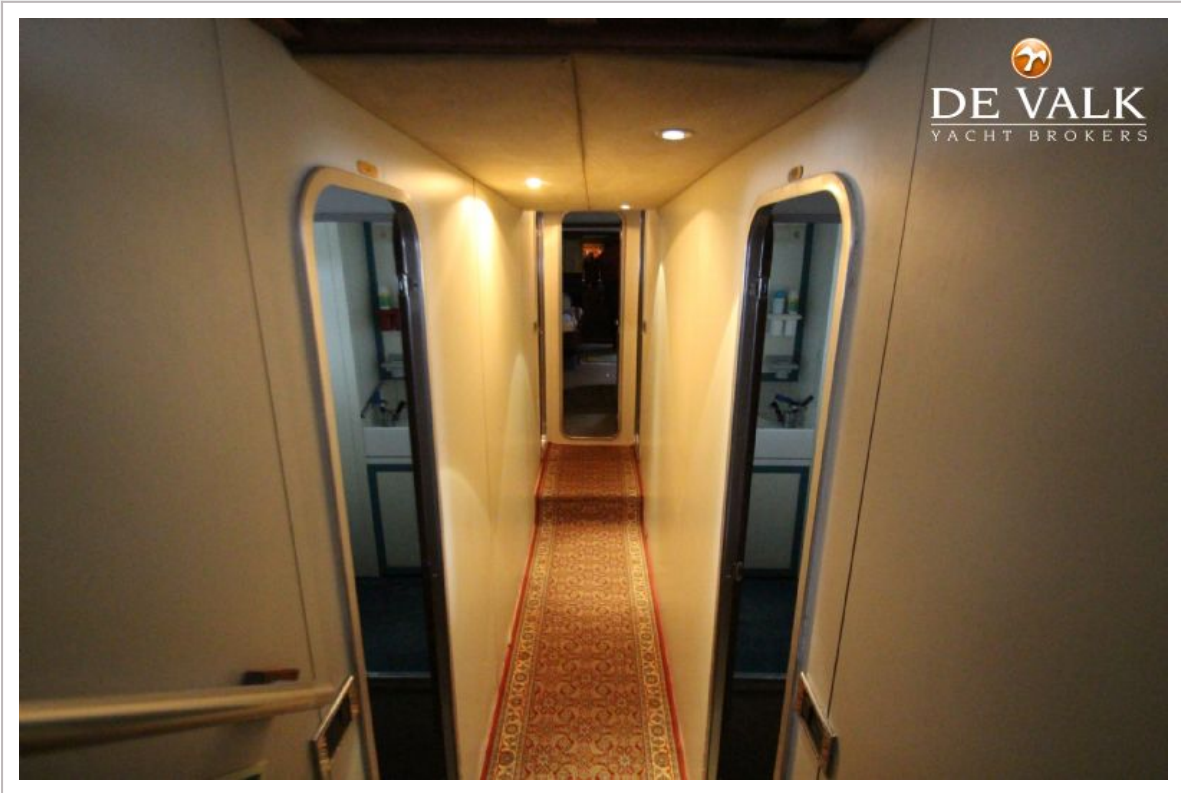
DUBOIS 90 PILOTHOUSE



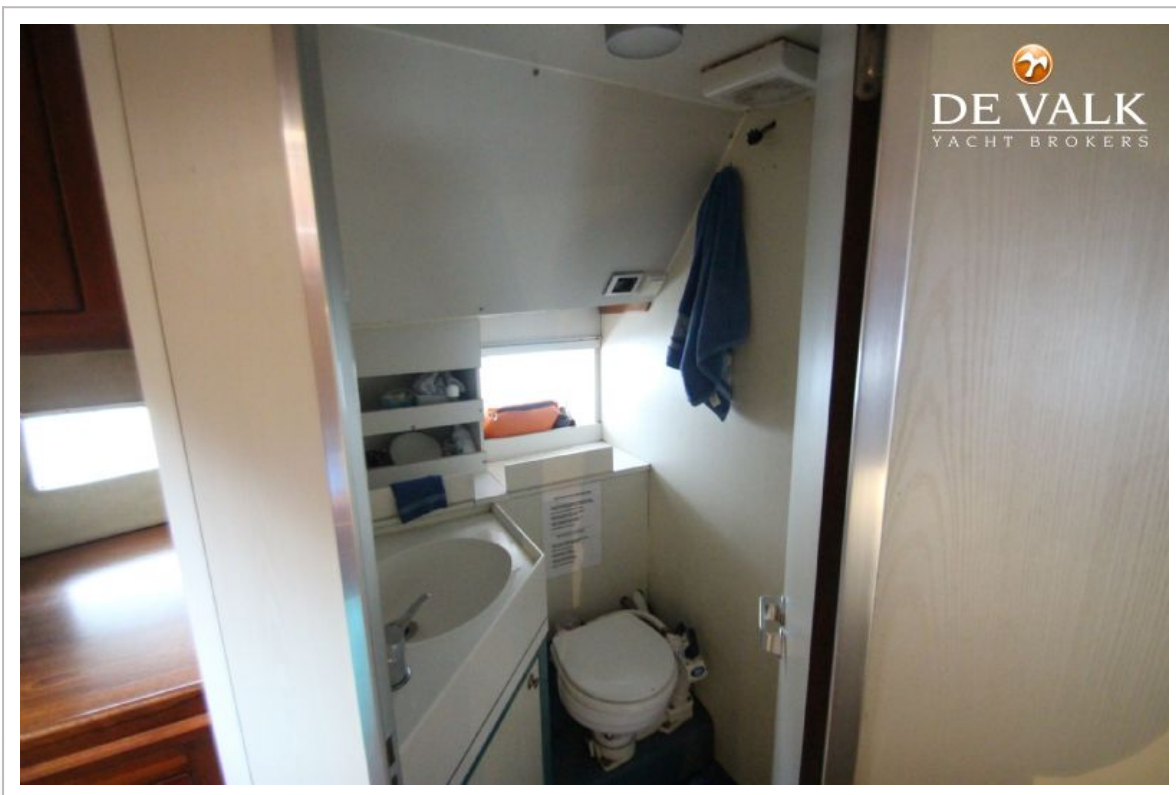
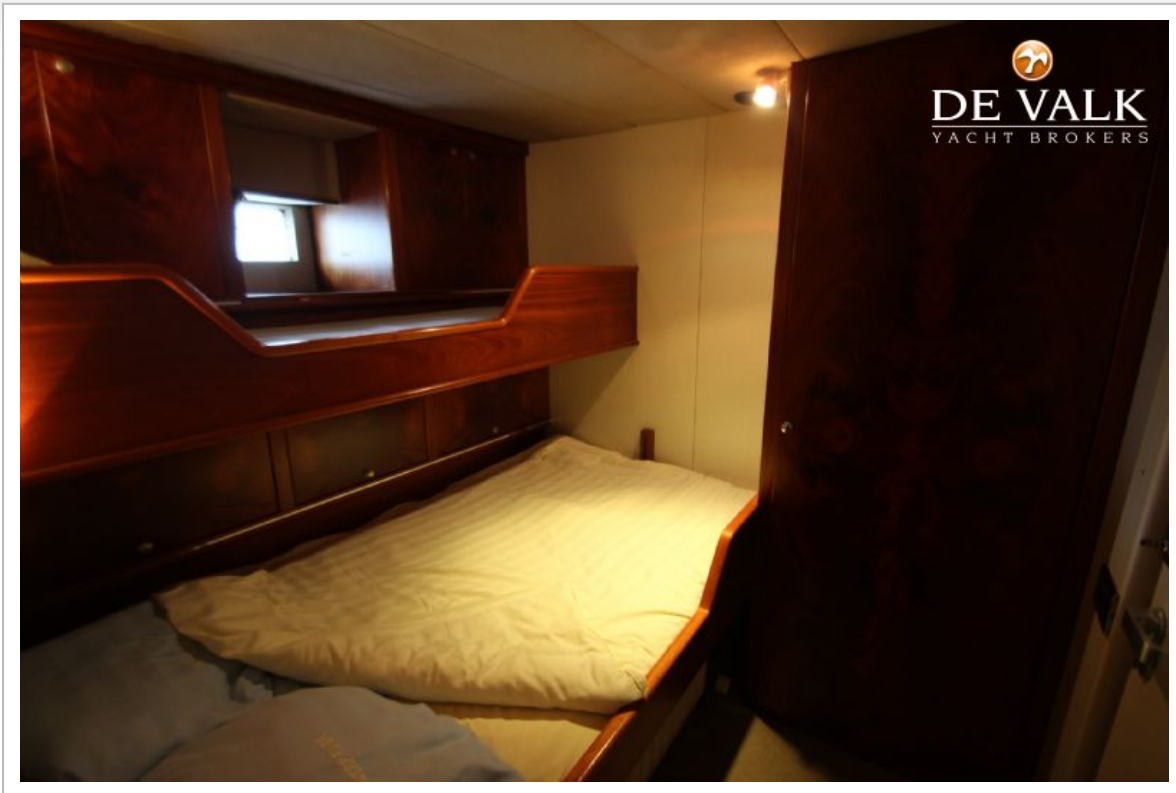
DUBOIS 90 PILOTHOUSE



DUBOIS 90 PILOTHOUSE



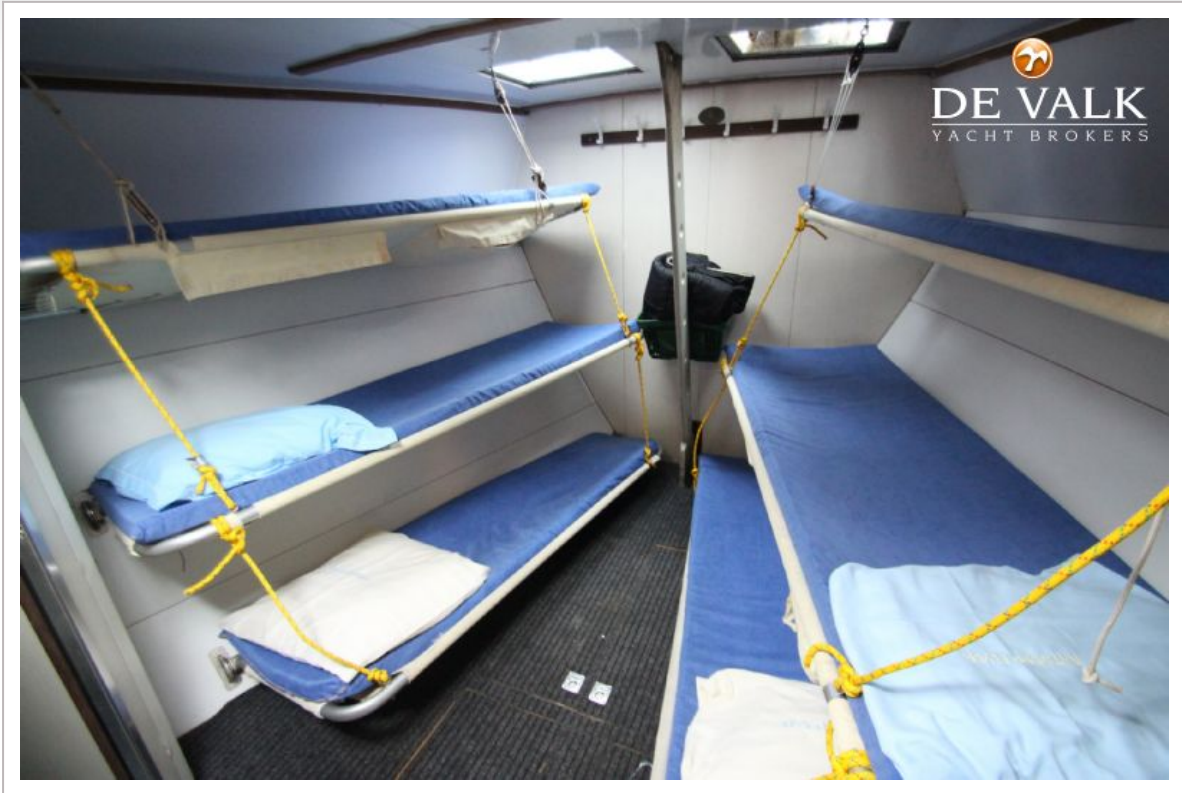
DUBOIS 90 PILOTHOUSE



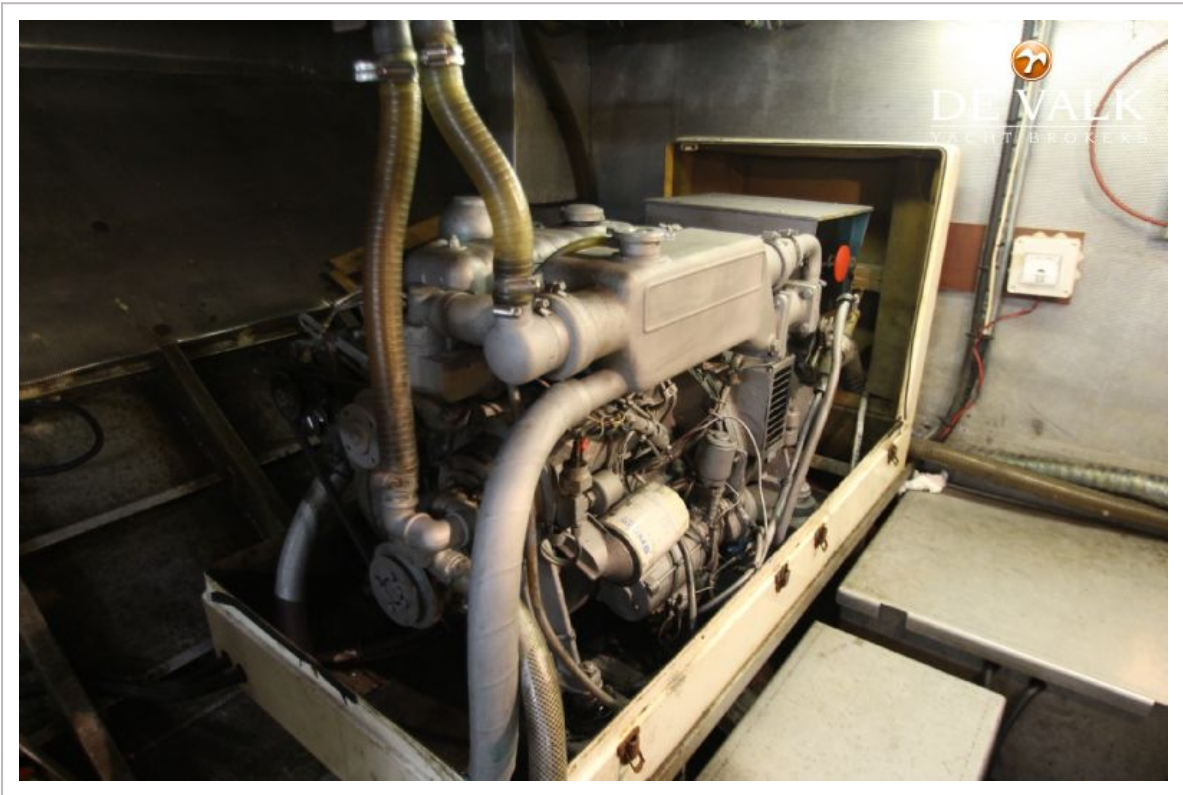
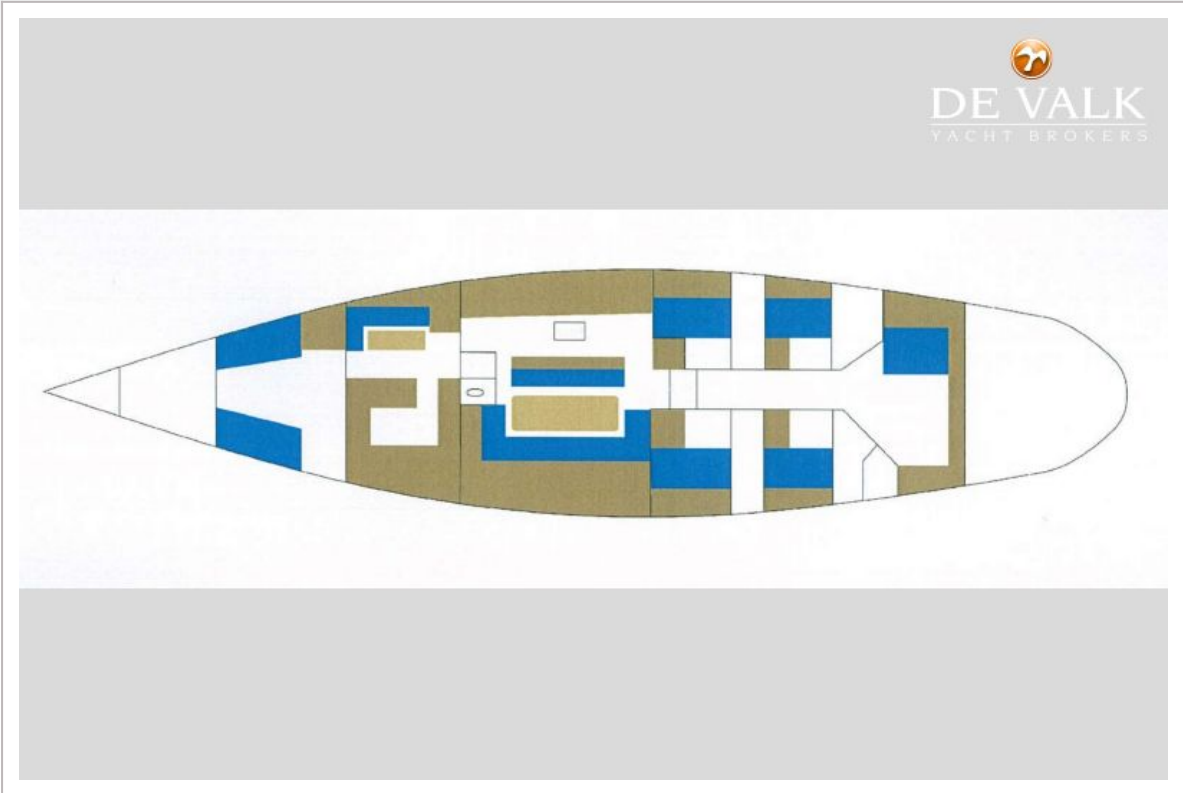
DUBOIS 90 PILOTHOUSE



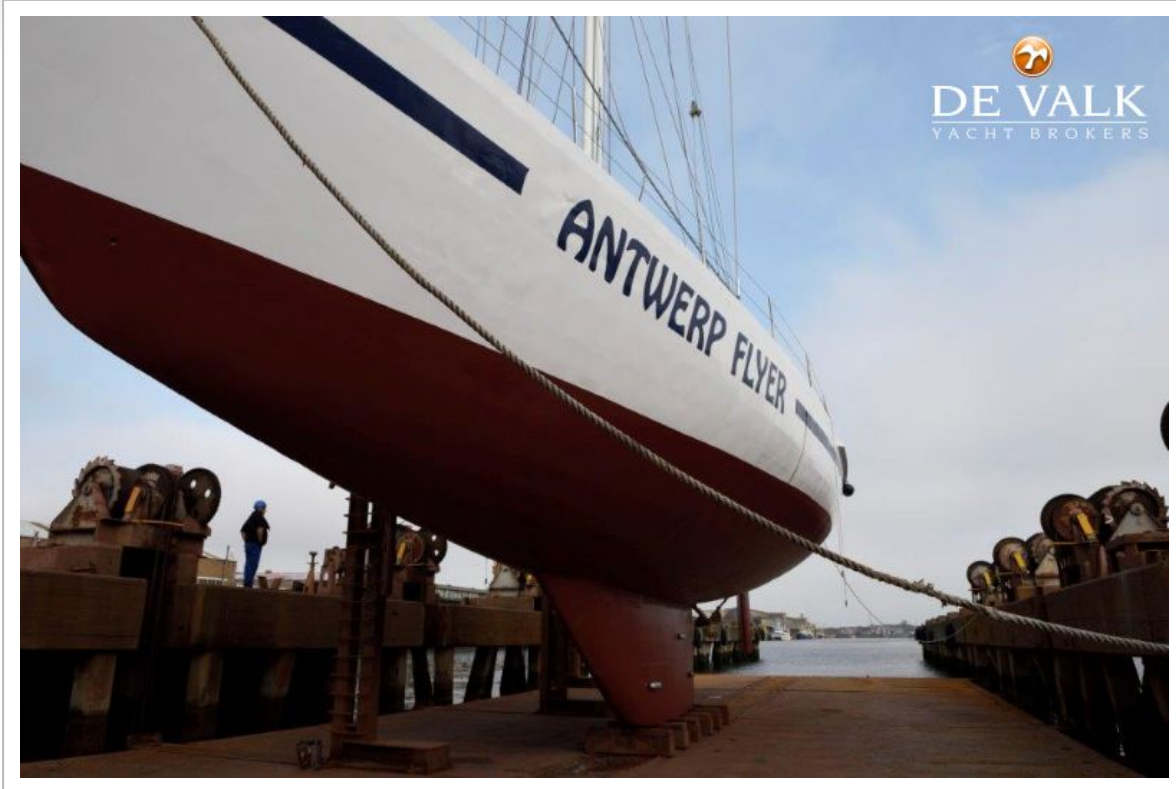
DUBOIS 90 PILOTHOUSE



DUBOIS 90 PILOTHOUSE



DUBOIS 90 PILOTHOUSE



DUBOIS 90 PILOTHOUSE

