



DE VALK  
YACHT BROKERS



PRINCESS 360 FLY



DE VALK  
YACHT BROKERS

# PRINCESS 360 FLY

## BROKER'S COMMENTS

This Princess 360 is an attractive, well kept motor yacht with a smart 2-cabin layout and a huge owner stateroom. This fly bridge cruiser offers modern styling with the feel of a much bigger boat. This 360 model built in 1993 by Princess yachts has a large cockpit with sliding doors and through-transom access to the integrated bathing platform.

*Ger Bayens*

## SPECIFICATIONS

<b>Dimensions</b>	12.02 x 3.84 x 0.86 (m)	<b>Builder</b>	Princess Yachts
<b>Built</b>	1993	<b>Cabins</b>	2
<b>Material</b>	GRP	<b>Berths</b>	4
<b>Engine(s)</b>	2 x Mercruiser diesel	<b>Hp/Kw</b>	2 x 220.00 (hp), 161.70 (kw)
<b>Asking price</b>	sold (VAT )	<b>Lying</b>	elsewhere / Not at sales office

## CONTACT

<b>Sales office</b>	De Valk Sint Annaland B.V.	<b>Telephone</b>	+31 (0)166 601 000
<b>Address</b>	Koelhuisweg 4 4697 RM Sint Annaland NL	<b>E-mail</b>	sintannaland@devalk.nl

## DISCLAIMER

These particulars are given in good faith as supplied but cannot be guaranteed.



# PRINCESS 360 FLY

## GENERAL

<b>Model</b>	PRINCESS 360 FLY
<b>Type</b>	motor yacht
<b>LOA (m)</b>	12,02
<b>LWL (m)</b>	0,00
<b>Beam (m)</b>	3,84
<b>Draft (m)</b>	0,86
<b>Air draft (m)</b>	3,80
<b>Headroom (m)</b>	1,95
<b>Year built</b>	1993
<b>Builder</b>	Princess Yachts
<b>Country</b>	Great Britain
<b>Designer</b>	Bernard Olesinski
<b>Displacement (t)</b>	7,5
<b>Hull material</b>	GRP
<b>Hull colour</b>	yes
<b>Hull shape</b>	deep-V
<b>Superstructure material</b>	GRP
<b>Rubbing strake</b>	rubber
<b>Deck material</b>	GRP
<b>Deck finish</b>	anti-slip moulded in
<b>Superstructure deck finish</b>	anti-slip moulded in
<b>Cockpit deck finish</b>	anti-slip moulded in
<b>Window frame</b>	aluminium
<b>Window material</b>	tempered glass
<b>Deckhatch</b>	yes
<b>Portholes</b>	stainless steel
<b>Flybridge</b>	yes
<b>Flybridge cover</b>	yes
<b>Flybridge cockpit cover</b>	yes
<b>Flybridge suncover</b>	yes



# PRINCESS 360 FLY

<b>Radar arch</b>	yes
<b>Fuel tank (litre)</b>	700
<b>Level indicator (fuel tank)</b>	yes
<b>Freshwater tank (litre)</b>	340
<b>Level indicator (freshwater)</b>	yes
<b>Blackwater tank (litre)</b>	yes
<b>Level indicator (blackwater)</b>	yes
<b>Wheel steering</b>	cable steering
<b>Flybridge helm position</b>	cable steering

## ACCOMMODATION

<b>Cabins</b>	2
<b>Berths</b>	4
<b>Interior</b>	ash
<b>Layout</b>	saloon, two cabins, one head & shower
<b>Floor</b>	carpet
<b>Open cockpit</b>	yes
<b>Headroom saloon (m)</b>	1,95
<b>Heating</b>	diesel ducted hot air Webasto
<b>Chart table</b>	yes
<b>Dinette</b>	yes
<b>Sliding door to cockpit</b>	dubble
<b>Opening door to cockpit</b>	yes
<b>Galley</b>	yes
<b>Countertop</b>	plastic
<b>Sink</b>	stainless steel
<b>Cooker</b>	calor gas 3-flame
<b>Oven</b>	Samsung Combi
<b>Microwave</b>	Samsung Combi
<b>Fridge</b>	with freezer compartment
<b>Hot water system</b>	220V + engine



# PRINCESS 360 FLY

Water pressure system	electrical
Coffee maker	yes
Owners cabin	French bed
Bed length (m)	1,98
Wardrobe	hanging/drawers/shelves
Bathroom	en suite
Toilet	en suite
Toilet system	electric
Wash basin	at the toilet
Shower	en suite
Guest cabin 1	twin single
Bed length (m)	2,00
Wardrobe	hanging/drawers/shelves
Bathroom	shared
Toilet	shared
Toilet system	electric
Wash basin	at the toilet
Shower	shared

## MACHINERY

No of engines	2
Make	MerCruiser
HP	220,00
kW	161,70
Fuel	diesel
Year installed	1993
Maximum speed (kn)	22
Engine hours	1494 - 1471
Engine cooling system	freshwater heat exchanger
Drive	shaft
Engine controls	bowden cable



# PRINCESS 360 FLY

<b>Gearbox</b>	yes
<b>Propeller type</b>	fixed
<b>Propeller blades</b>	yes
<b>Propeller shaft material</b>	stainless steel
<b>Manual bilge pump</b>	yes
<b>Electric bilge pump</b>	yes
<b>Electrical installation</b>	12/220V
<b>Generator</b>	Mase Marine
<b>Running hours generator</b>	110
<b>Batteries</b>	yes
<b>Start battery</b>	yes
<b>Service battery</b>	yes
<b>Battery charger</b>	with remote charger control Victron Phoenix 12/50
<b>Shorepower</b>	with cable
<b>Trimtabs</b>	yes

## NAVIGATION

<b>Compass</b>	Plastimo Offshore 105
<b>Electric compass</b>	at auto pilot Autohelm
<b>Depth sounder</b>	Dataline
<b>Log</b>	Dataline
<b>VHF</b>	Shipmate RS 8300
<b>Autopilot</b>	Autohelm ST 7000
<b>Radar</b>	Panasonic
<b>Plotter</b>	Northstar Explorer 550

## EQUIPMENT

<b>Cockpit cover</b>	renewed 2013 (old one used in wintertime)
<b>Bimini</b>	yes
<b>Winter cover</b>	yes
<b>Cockpit table</b>	yes



# PRINCESS 360 FLY

Cockpit chairs	yes
Bathing platform	yes
Boarding ladder	stainless steel
Transom door	yes
Anchor	Delta
Anchor chain	yes
Windlass	electrical Lewmar
Davits	stainless steel Whittall
Davits controls	manual
Sea railing	stainless steel
Grab rail (superstructure)	stainless steel
Pushpit	yes
Wiper	yes
Horn	electric
Fenders	yes
Mooring lines	yes
TV	Sharp Aquos
Radio-cd player	Pioneer
Speakers in salon	yes
Fire extinguisher	yes
Extinguisher in engine room	yes

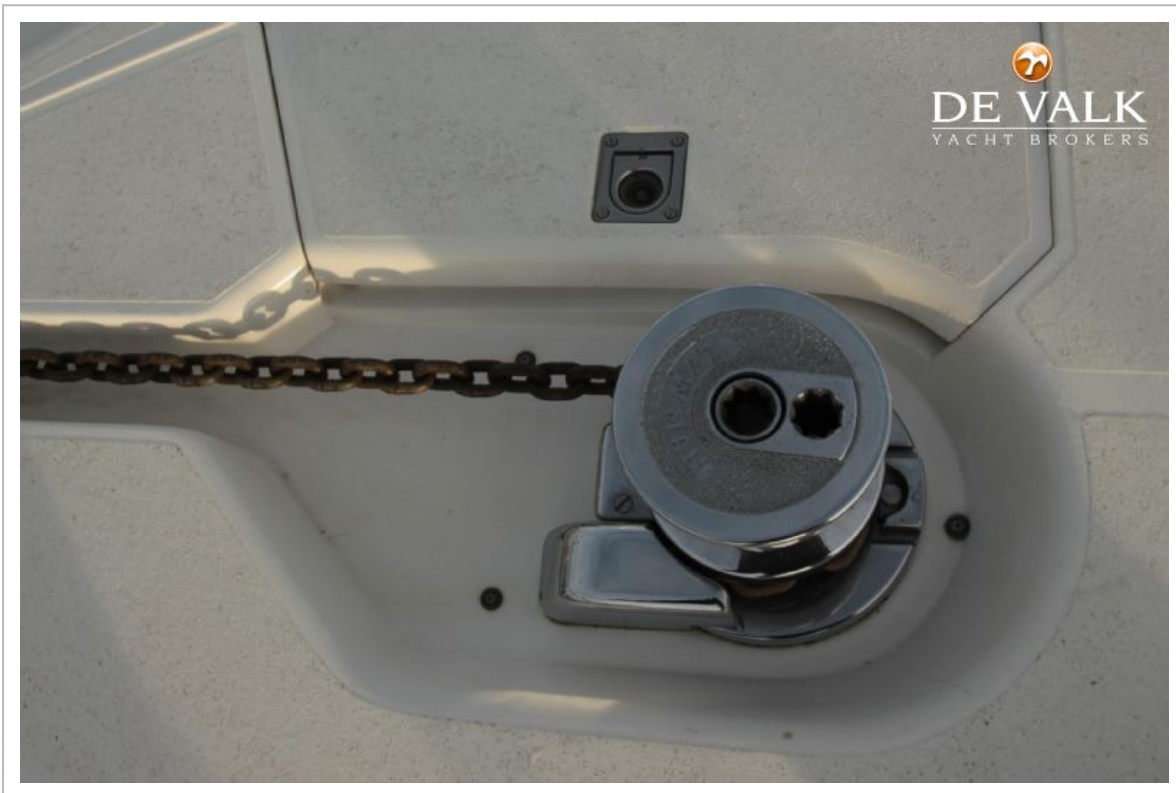
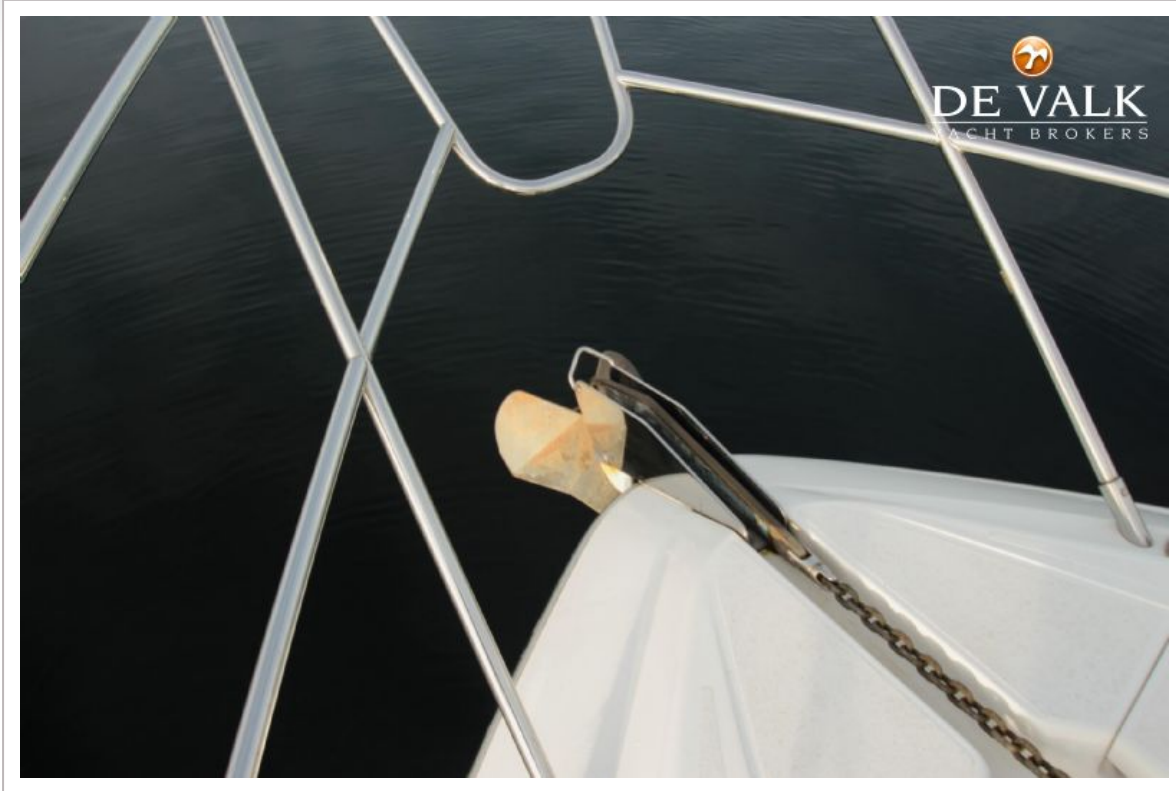


# PRINCESS 360 FLY





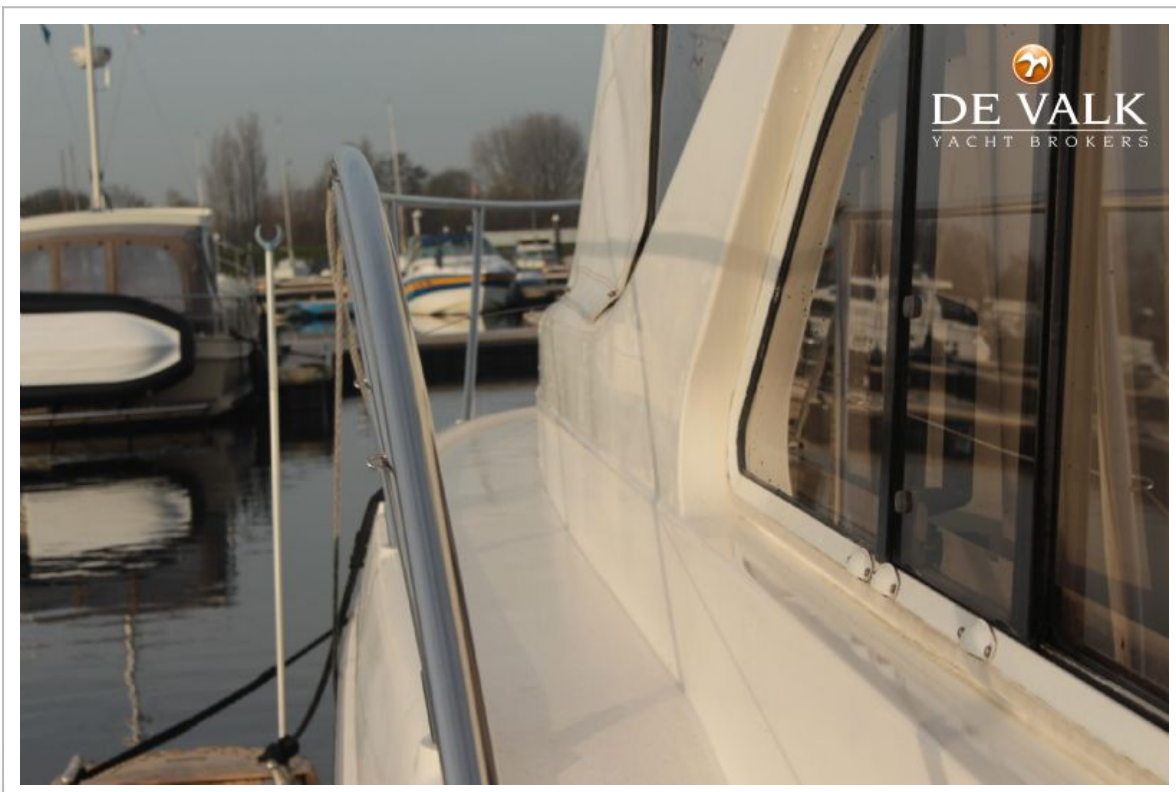
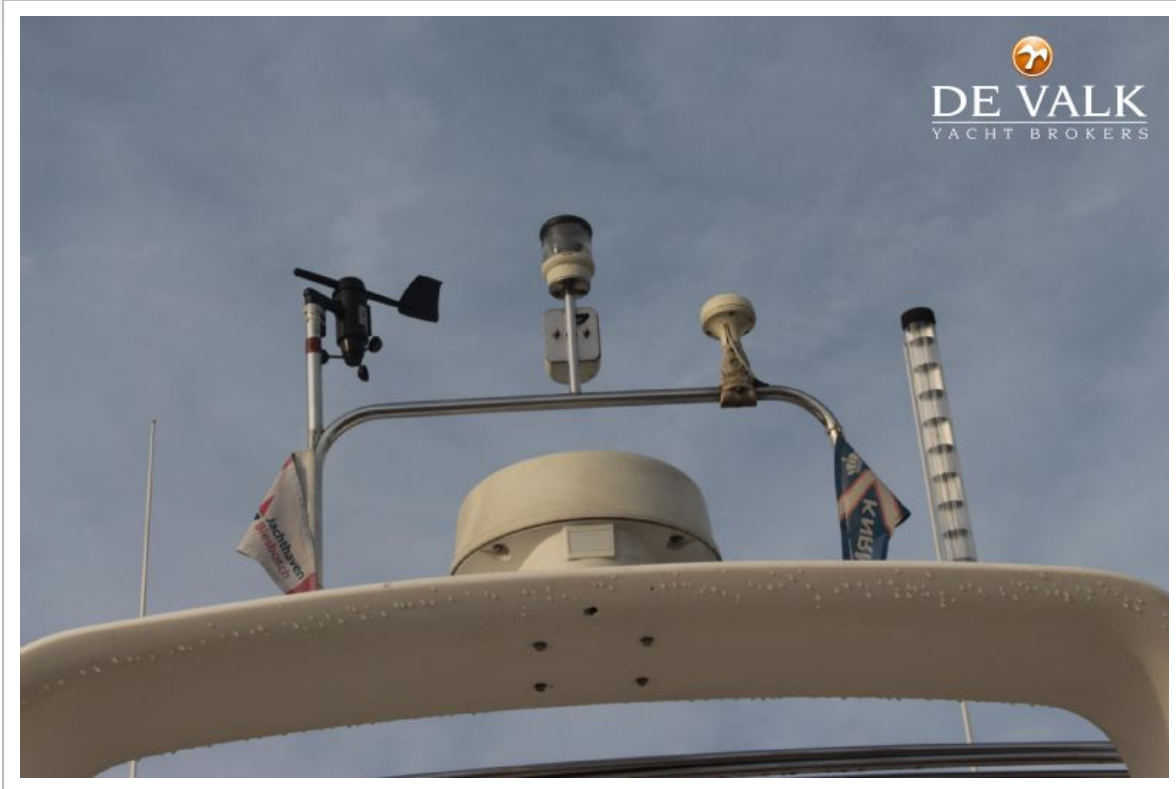
# PRINCESS 360 FLY



# PRINCESS 360 FLY



# PRINCESS 360 FLY



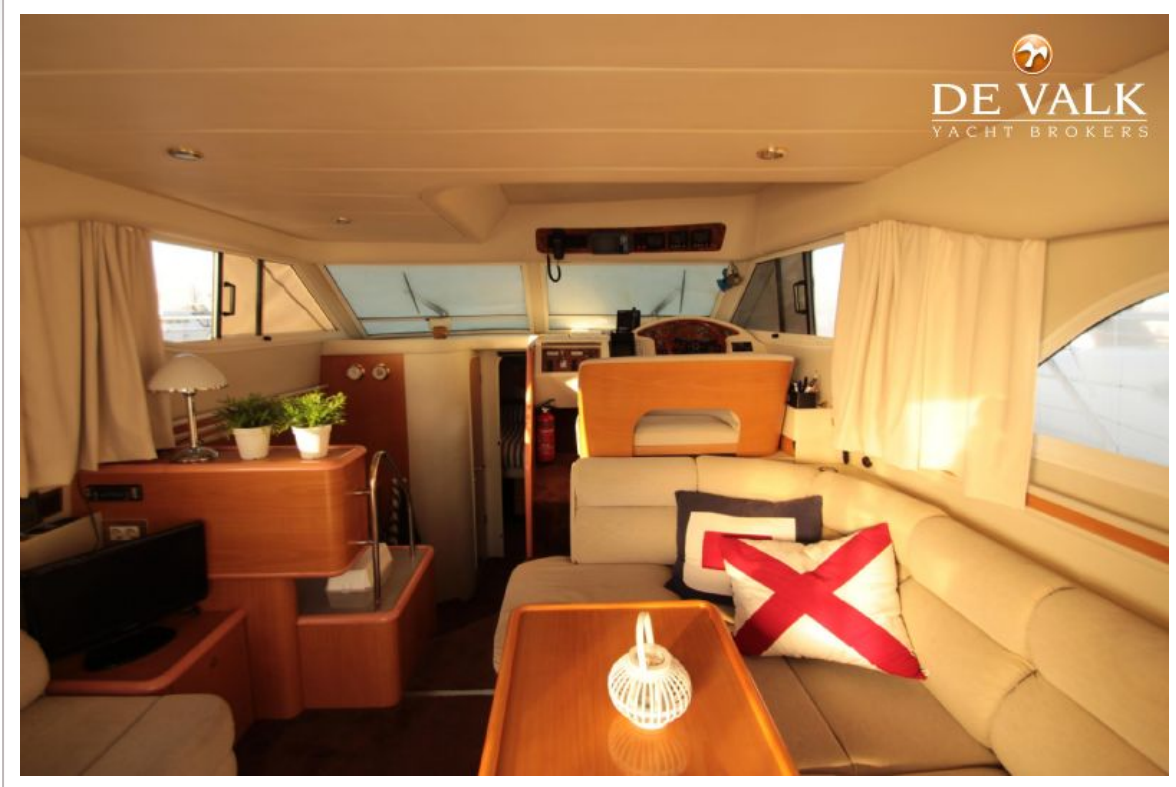
# PRINCESS 360 FLY



# PRINCESS 360 FLY



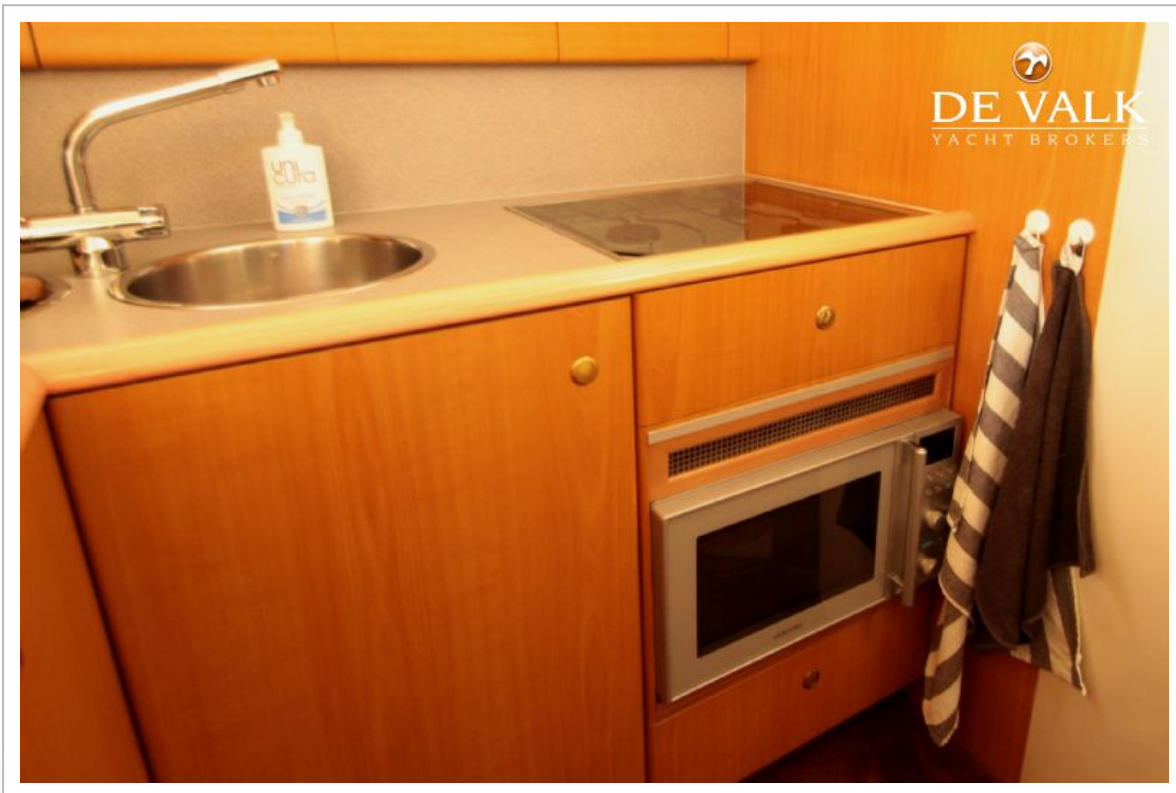
# PRINCESS 360 FLY



# PRINCESS 360 FLY



# PRINCESS 360 FLY





# PRINCESS 360 FLY



# PRINCESS 360 FLY



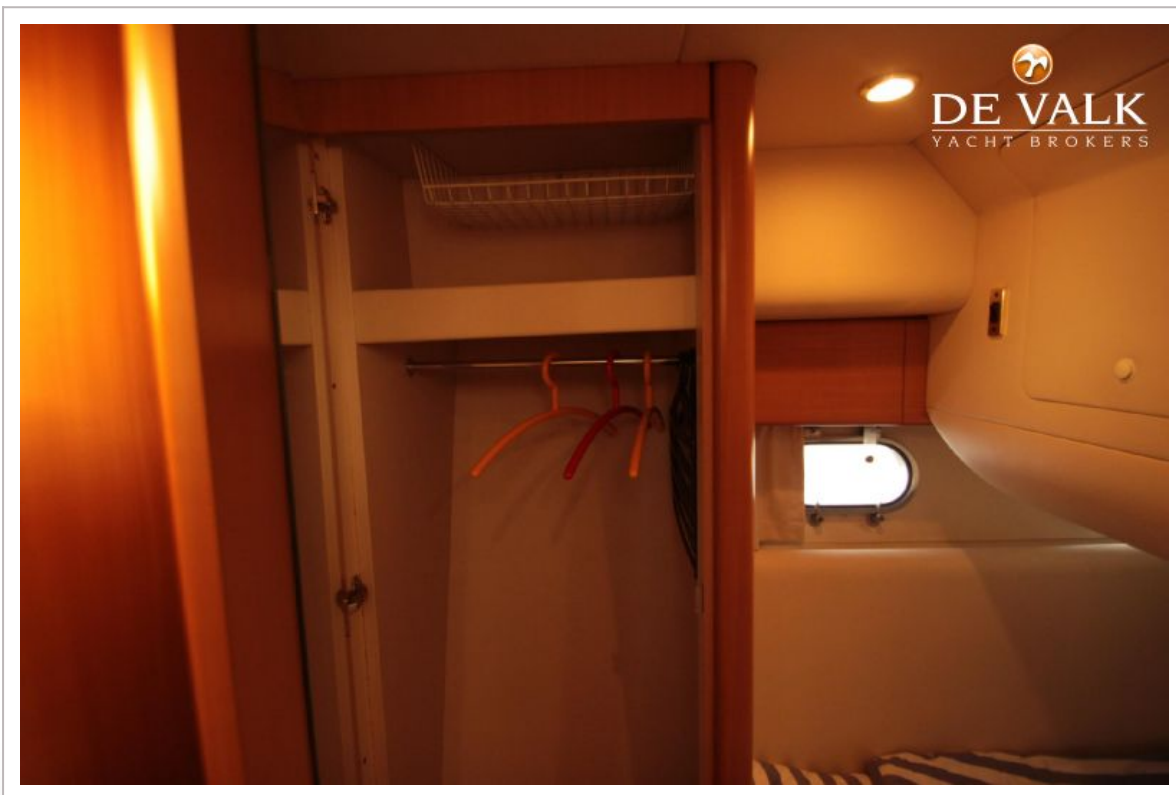
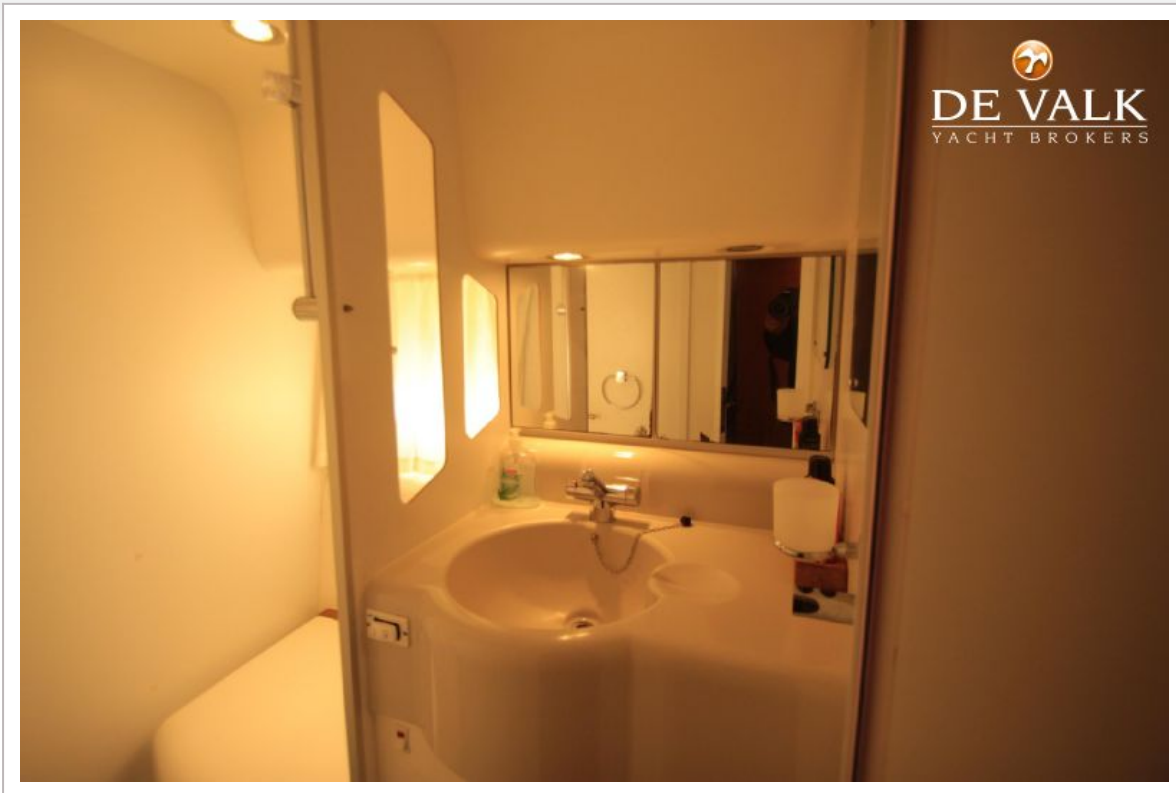
# PRINCESS 360 FLY



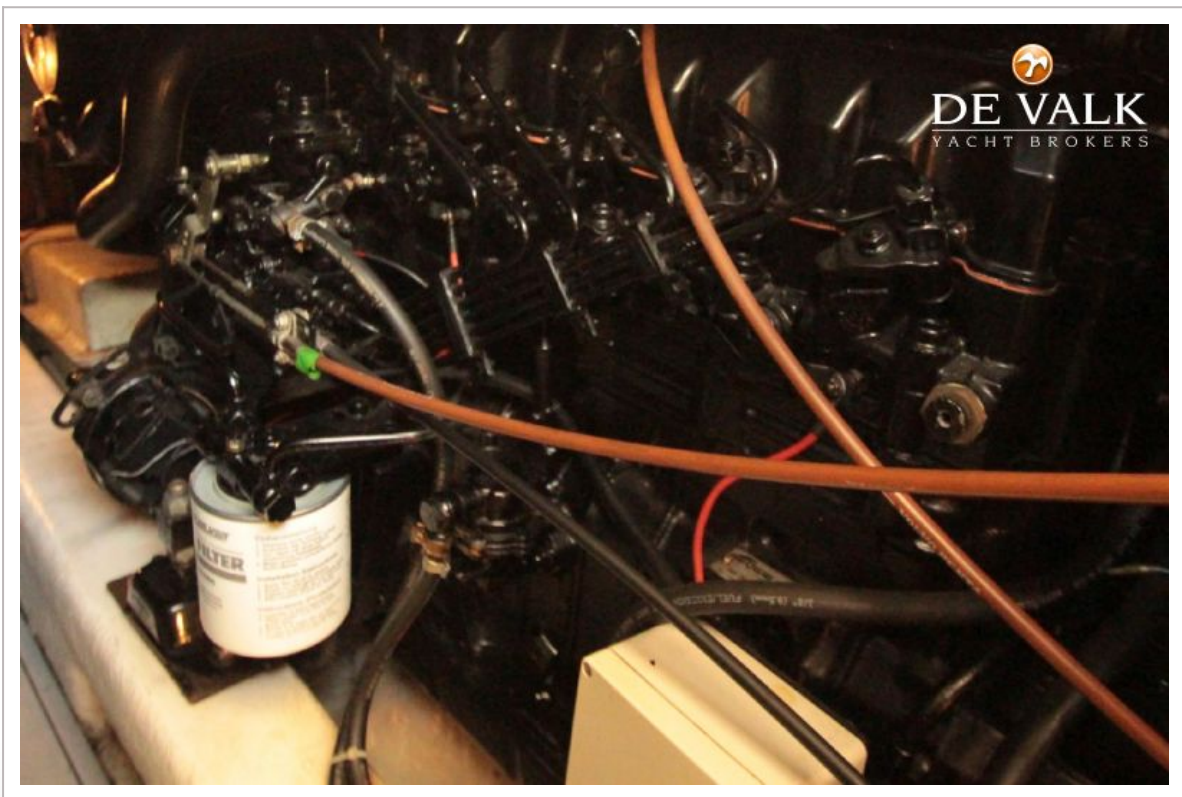
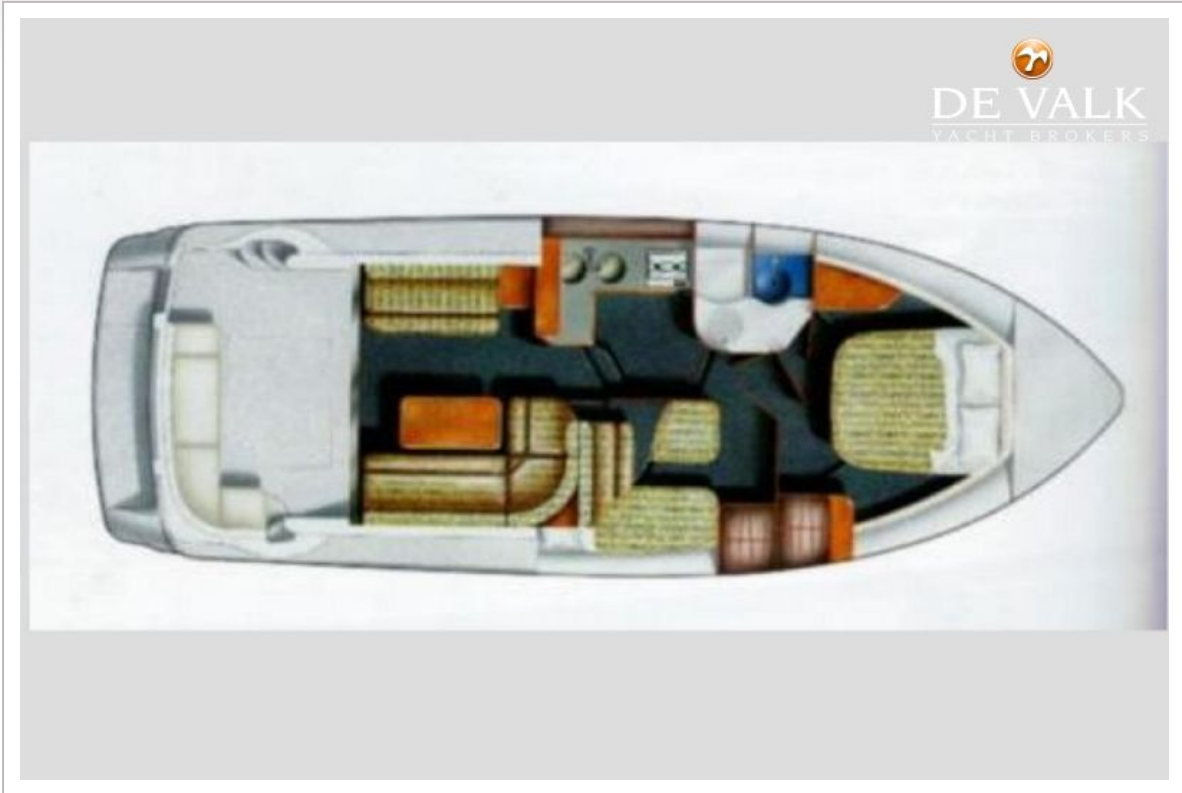
# PRINCESS 360 FLY



# PRINCESS 360 FLY



# PRINCESS 360 FLY



# PRINCESS 360 FLY

