



## DECKSALON CUTTER 43



DE VALK  
YACHT BROKERS

# DECKSALON CUTTER 43

## BROKER'S COMMENTS

This classically designed yacht with deck saloon, flushdek, large cockpit and appearance. The yacht is cutter rigged which divided the square meters of the sails for easy control. There are three cabins, the one in the back is kind of small. Floor in the living room needs attention. This yacht is designed to sail long distances in a comfortable way.

*Stef Struijk*

## SPECIFICATIONS

|                     |                                 |                |                             |
|---------------------|---------------------------------|----------------|-----------------------------|
| <b>Dimensions</b>   | 13.00 x 4.05 x 1.80 (m)         | <b>Builder</b> | Jachtwerf Klassiek Langerak |
| <b>Built</b>        | 2000                            | <b>Cabins</b>  | 3                           |
| <b>Material</b>     | Wood Epoxy                      | <b>Berths</b>  | 8                           |
| <b>Engine(s)</b>    | 1 x Mitsubishi M417A602A diesel | <b>Hp/Kw</b>   | 43.00 (hp), 31.61 (kw)      |
| <b>Asking price</b> | sold (VAT )                     | <b>Lying</b>   | at sales office             |

## CONTACT

|                     |  |                  |                        |
|---------------------|--|------------------|------------------------|
| <b>Sales office</b> | De Valk Sint Annaland B.V.                   | <b>Telephone</b> | +31 (0)166 601 000     |
| <b>Address</b>      | Koelhuisweg 4<br>4697 RM Sint Annaland<br>NL | <b>E-mail</b>    | sintannaland@devalk.nl |

## DISCLAIMER

These particulars are given in good faith as supplied but cannot be guaranteed.



# DECKSALON CUTTER 43

## GENERAL

|                            |                             |
|----------------------------|-----------------------------|
| Model                      | DECKSALON CUTTER 43         |
| Type                       | sailing yacht               |
| LOA (m)                    | 13,00                       |
| LWL (m)                    | 0,00                        |
| Beam (m)                   | 4,05                        |
| Draft (m)                  | 1,80                        |
| Air draft (m)              | 17,50                       |
| Headroom (m)               | 1,82                        |
| Year built                 | 2000                        |
| Builder                    | Jachtwerf Klassiek Langerak |
| Country                    | The Netherlands             |
| Designer                   | Helleman                    |
| Displacement (t)           | 11.8                        |
| Ballast (tonnes)           | lead in steel 2,5           |
| CE norm                    | A                           |
| Hull material              | wood epoxy                  |
| Hull colour                | blue                        |
| Hull shape                 | roundbilged                 |
| Keel type                  | long keel Semi              |
| Superstructure material    | wood epoxy Mahonie          |
| Rubbing strake             | wood                        |
| Deck material              | wood epoxy                  |
| Deck finish                | teak                        |
| Superstructure deck finish | teak                        |
| Cockpit deck finish        | teak                        |
| Dorades                    | yes                         |
| Window frame               | aluminum                    |
| Window material            | tempered glass              |
| Radar arch                 | non collapsible             |
| Fuel tank (litre)          | 220                         |



# DECKSALON CUTTER 43

|                         |                              |
|-------------------------|------------------------------|
| Freshwater tank (litre) | 500                          |
| Wheel steering          | yes                          |
| Emergency tiller        | yes                          |
| Extra info              | Hull outside bow iis Aramide |

## ACCOMMODATION

|                       |                                   |
|-----------------------|-----------------------------------|
| Cabins                | 3                                 |
| Berths                | 8                                 |
| Interior              | teak                              |
| Deck saloon           | yes                               |
| Headroom saloon (m)   | 1,85                              |
| Heating               | diesel ducted hot air Webasto     |
| Chart table           | yes                               |
| Galley                | yes                               |
| Countertop            | Formica                           |
| Sink                  | stainless steel                   |
| Cooker                | electric                          |
| Oven                  | yes                               |
| Fridge                | with freezer compartment Vibocold |
| Hot water system      | 220V + engine                     |
| Water pressure system | electrical                        |
| Owners cabin          | double bed                        |
| Bed length (m)        | 2.00                              |
| Wardrobe              |                                   |
| Bathroom              | yes                               |
| Toilet                |                                   |
| Toilet system         | manual                            |
| Wash basin            | in the bathroom                   |
| Shower                | yes                               |
| Guest cabin 1         | v-bed                             |
| Bed length (m)        | 2.00                              |



# DECKSALON CUTTER 43

|               |              |
|---------------|--------------|
| Wardrobe      | yes          |
| Guest cabin 2 | double bed   |
| Wardrobe      | yes          |
| Toilet        | yes          |
| Toilet system | manual       |
| Wash basin    | in the cabin |

## MACHINERY

|                          |                           |
|--------------------------|---------------------------|
| No of engines            | 1                         |
| Make                     | Mitsubishi                |
| Type                     | M417A602A                 |
| HP                       | 43,00                     |
| kW                       | 31,61                     |
| Fuel                     | diesel                    |
| Year installed           | 2010                      |
| Maximum speed (kn)       | 7                         |
| Cruising speed (kn)      | 6                         |
| Consumption (l/hr)       | 3,5                       |
| Engine hours             | 375                       |
| Engine cooling system    | freshwater heat exchanger |
| Drive                    | shaft                     |
| Bowthruster              | electric Vetus            |
| Propeller type           | fixed                     |
| Propeller blades         | 3                         |
| Propeller shaft material | stainless steel           |
| Electrical installation  | 12v / 220v                |
| Generator                | Koala 60 Ruggerini        |
| Start battery            | 1                         |
| Service battery          | 2                         |
| Battery charger          | Mastervolt mass 12/80     |



## NAVIGATION

|                        |                                       |
|------------------------|---------------------------------------|
| Compass                | Logic                                 |
| Depth sounder          | Logic                                 |
| Log                    | Logic                                 |
| Windset                | Logic                                 |
| Autopilot              | Logic                                 |
| Rudder angle indicator | yes                                   |
| Radar                  | Raytheon SL pathfinder                |
| Plotter                | VDO logic map10 (defect) simrad CX 33 |
| Navtex                 | Furuno NX 300                         |

## EQUIPMENT

|                            |                |
|----------------------------|----------------|
| Sprayhood with grab rail   | yes            |
| Winter cover               | Cockpit only   |
| Cockpit cushions           | yes            |
| Cockpit table              | yes            |
| Boarding ladder            | yes            |
| Deck shower                | yes            |
| Anchor                     | yes            |
| Anchor chain               | 45 m           |
| Windlass                   | Vetus 1200 w   |
| Sea railing                | wire           |
| Grab rail (superstructure) | teak           |
| Life raft (pers)           | Seasave 6 pers |
| Lifebuoy                   | yes            |
| Radar reflector            | yes            |
| Fenders                    | yes            |
| Mooring lines              | yes            |
| Clock - barometer          | yes            |



## RIGGING

|                               |                                   |
|-------------------------------|-----------------------------------|
| Rigging                       | cutter                            |
| Material mast                 | aluminum                          |
| Mainsail                      | 35 m2                             |
| Mainsail cover                | yes                               |
| Battcars                      | yes                               |
| Jib                           | cutter on boom 16 m2              |
| Genoa                         | 49 m2                             |
| Genoa furler                  | Nemo                              |
| Genoa cover                   | yes                               |
| Booster                       | 80 m2                             |
| Stormjib                      | yes                               |
| Self tacking jib installation | yes                               |
| Reefing System                | slabreefing                       |
| Primary sheet winch           | 2x meissner 30 sta - 53           |
| Secondary sheet winch         | 2x meissner 23 ta - 41            |
| Halyard winches               | 2x meissner 25 - 44 + meissner 23 |
| Spi-pole                      | aluminum                          |



## DECKSALON CUTTER 43

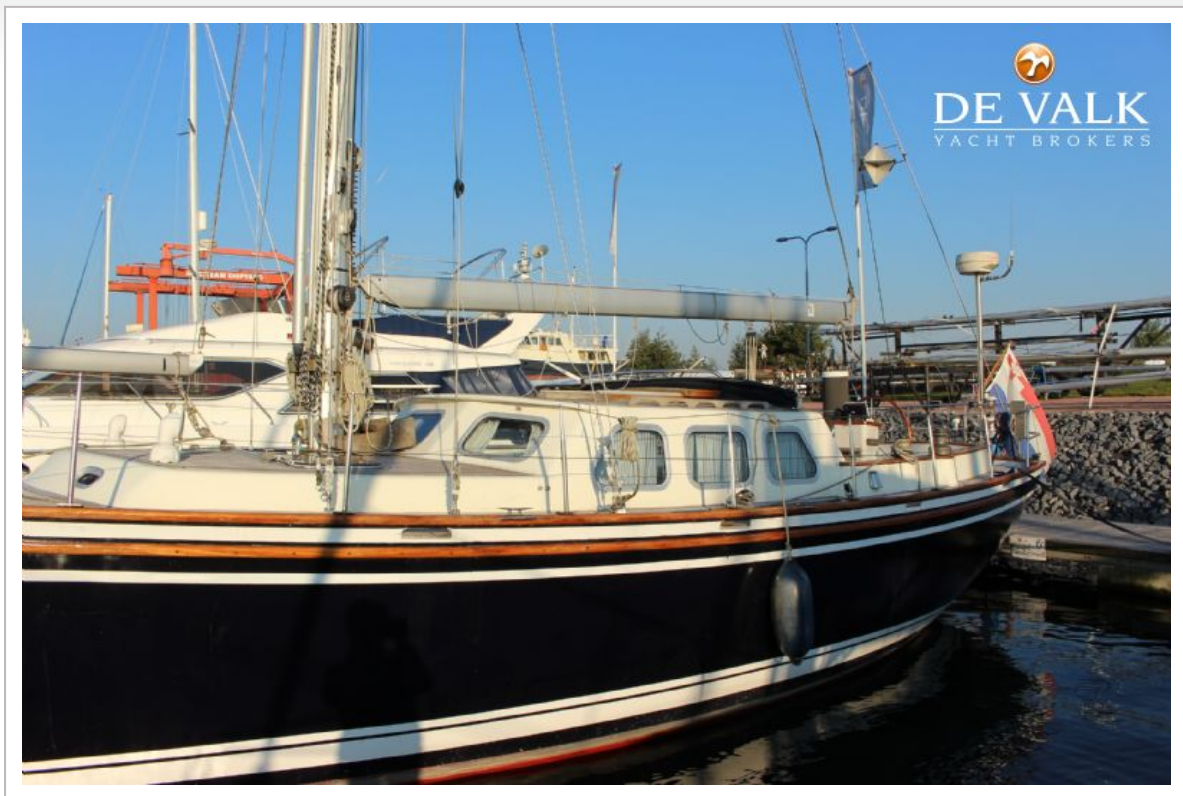




## DECKSALON CUTTER 43



## DECKSALON CUTTER 43





## DECKSALON CUTTER 43





## DECKSALON CUTTER 43





## DECKSALON CUTTER 43





## DECKSALON CUTTER 43



## DECKSALON CUTTER 43





## DECKSALON CUTTER 43

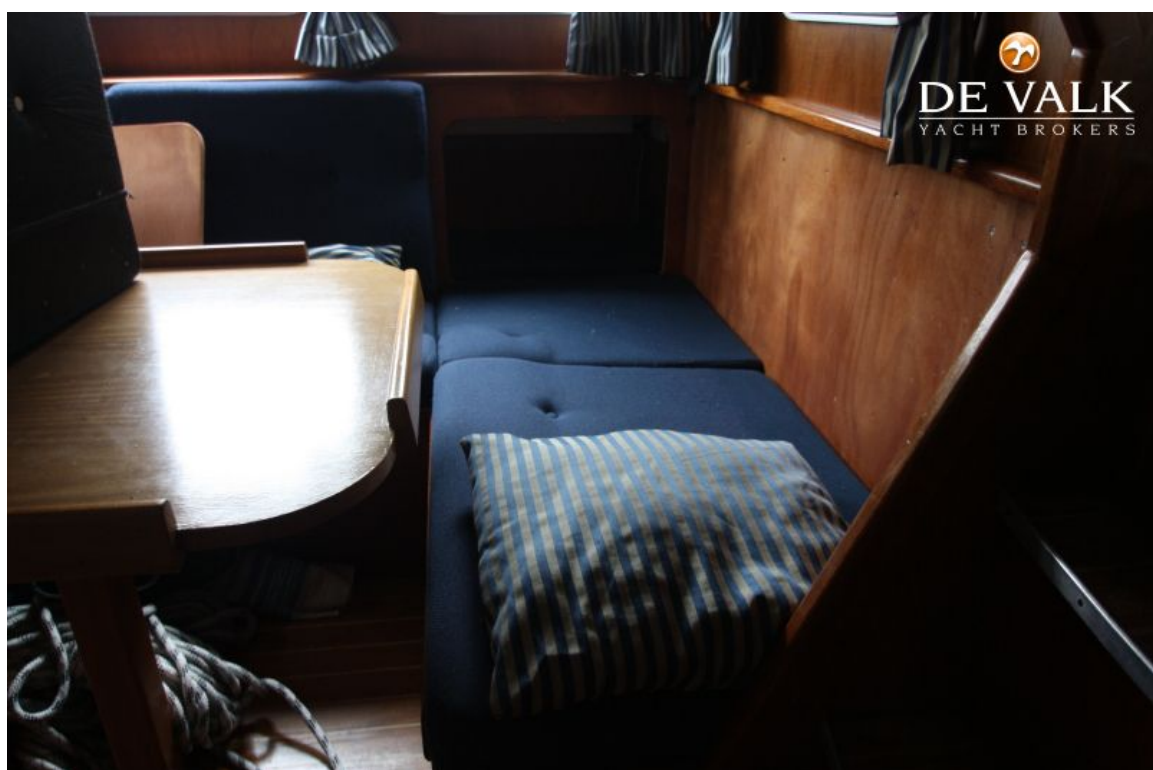




## DECKSALON CUTTER 43

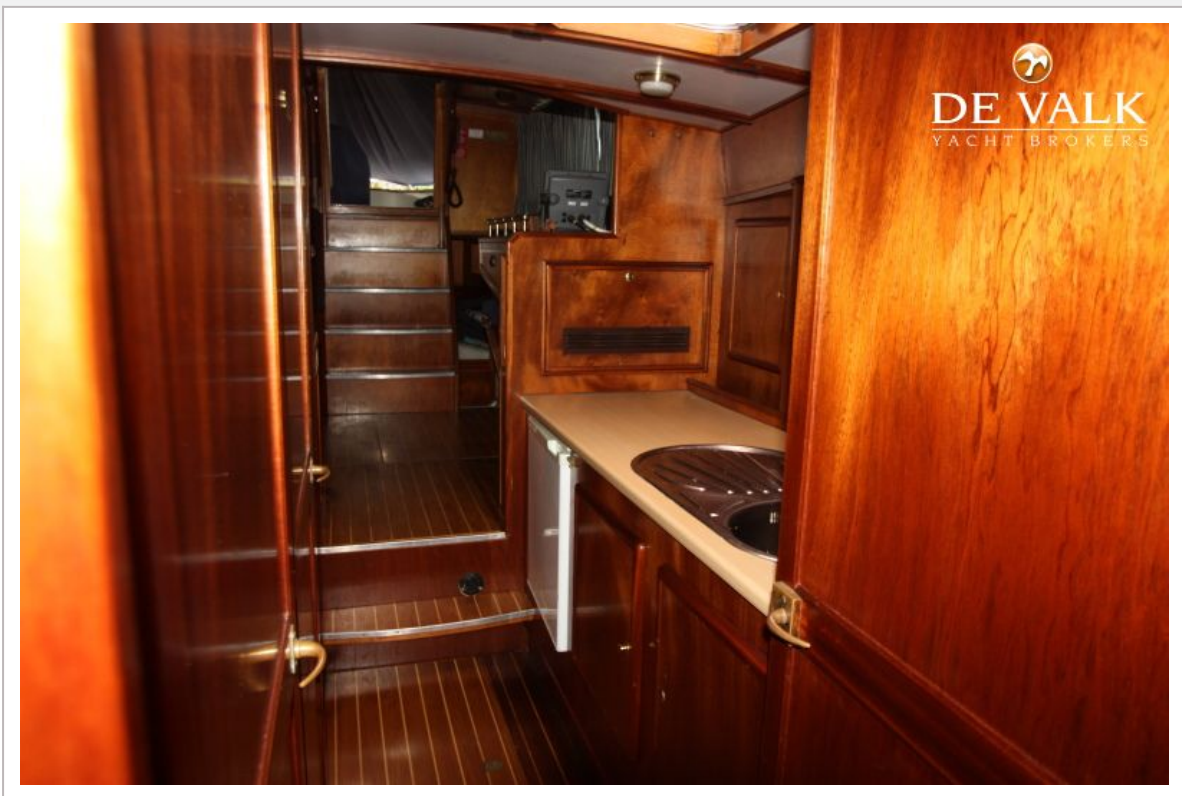


## DECKSALON CUTTER 43





## DECKSALON CUTTER 43

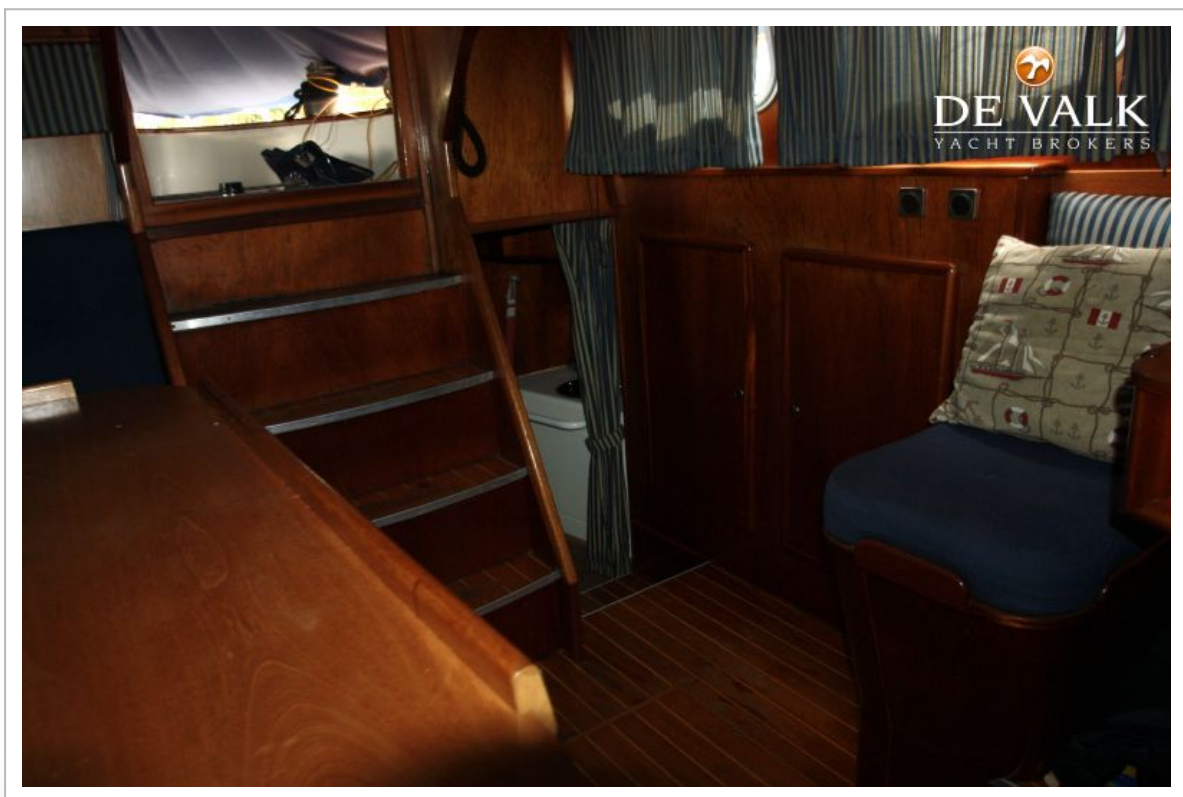
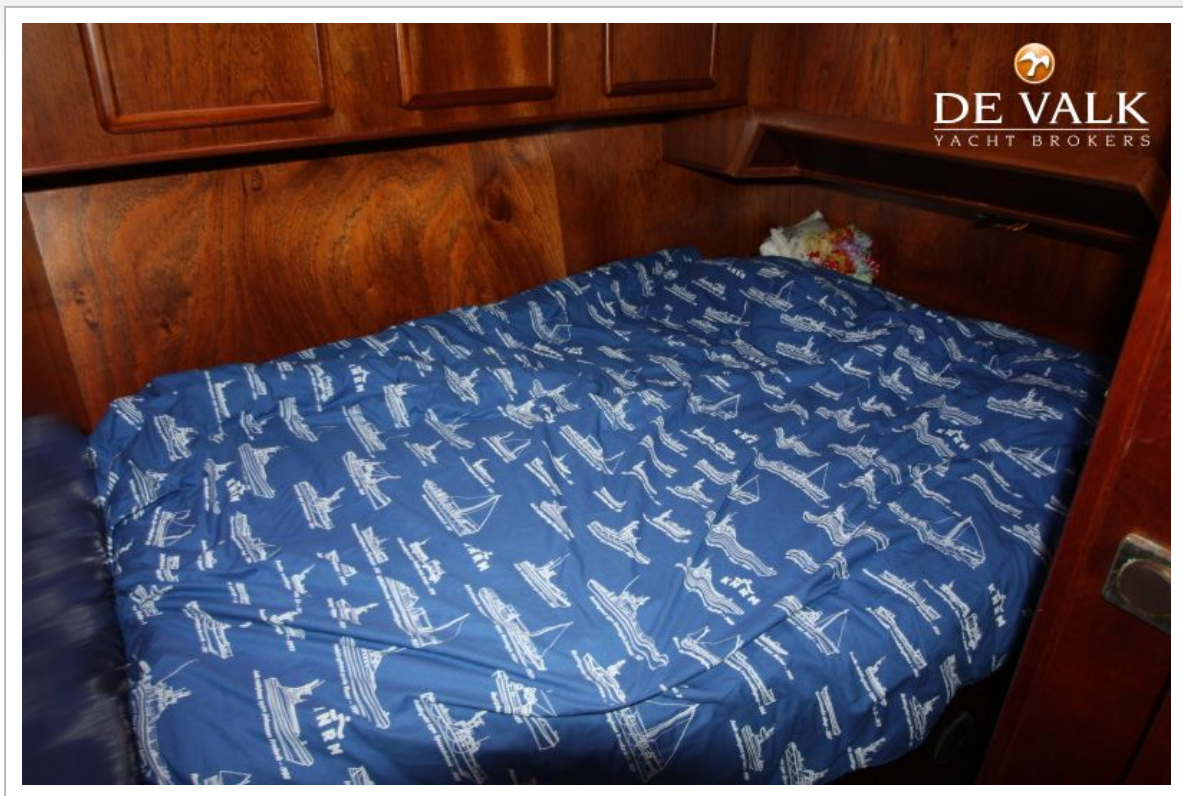


## DECKSALON CUTTER 43

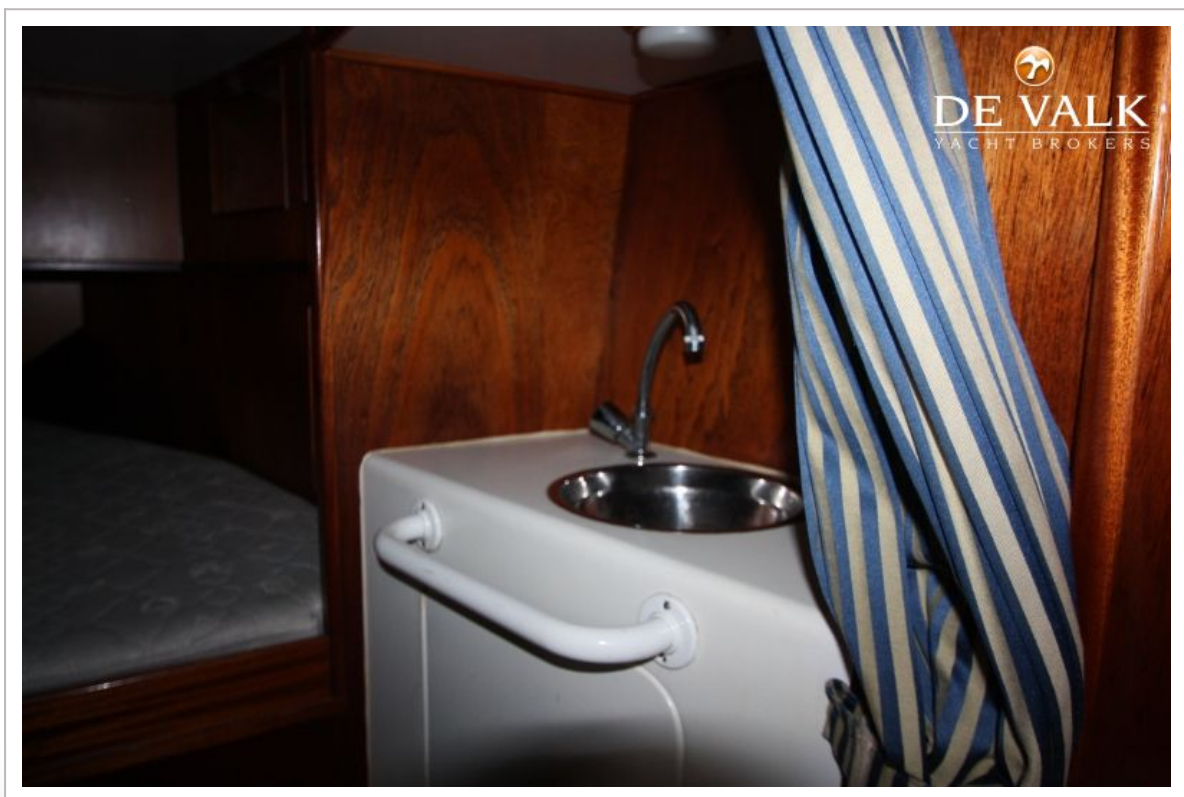
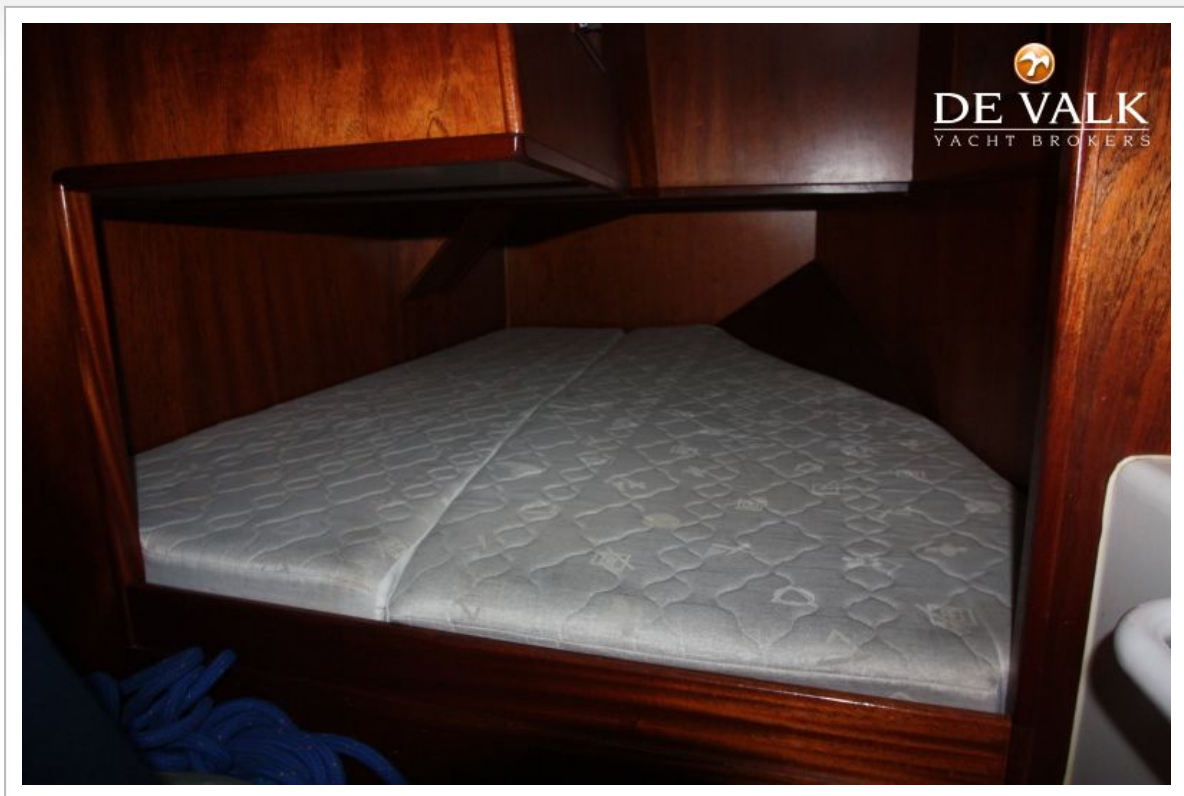




## DECKSALON CUTTER 43

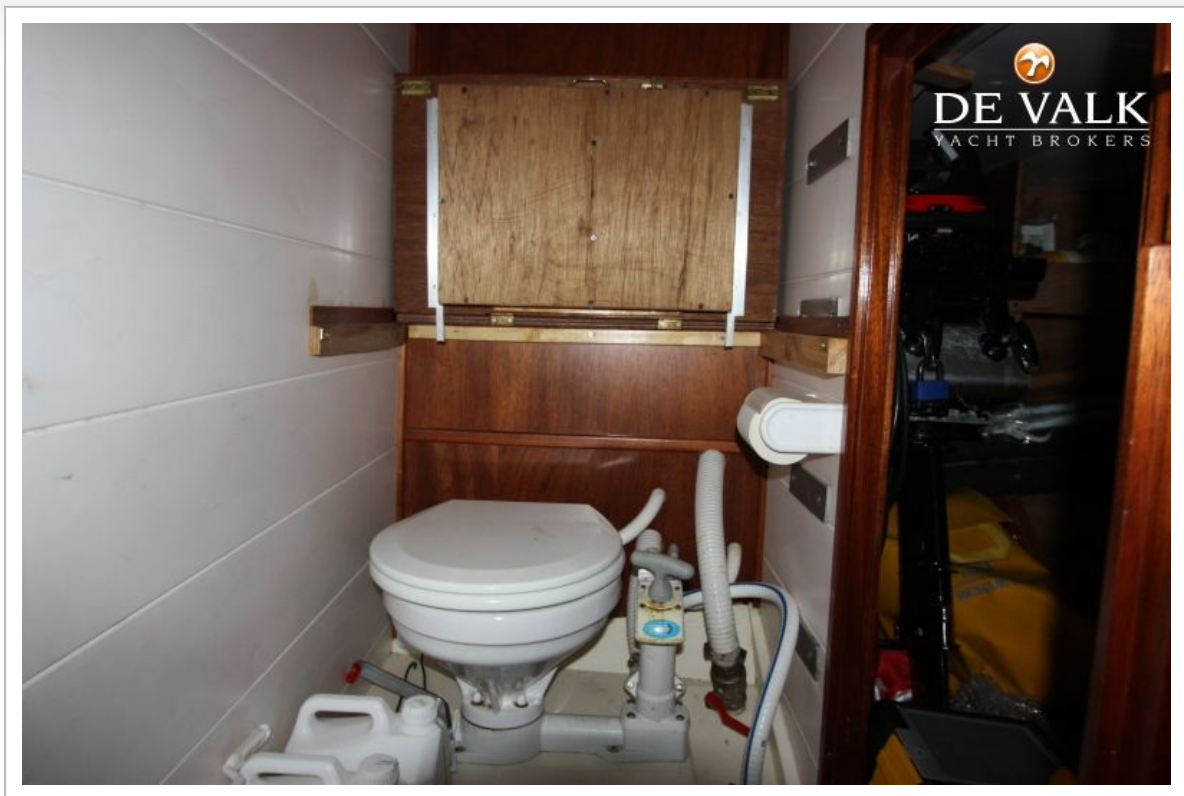


## DECKSALON CUTTER 43





## DECKSALON CUTTER 43



## DECKSALON CUTTER 43





## DECKSALON CUTTER 43



## DECKSALON CUTTER 43

