



## KOOPMANS 40



DE VALK  
YACHT BROKERS

## BROKER'S COMMENTS

The Koopmans 40 is a classic design by the famous D. Koopmans Sr. All his designs excell in seaworthiness, cruising performance and safety. She has a warm full mahogany interior with ample headroom and stowage space throughout. Her strong steel S-shaped 1,60 m. draft make her suitable for both long distance blue water cruising aswell as anchoring in shallows. This Koopmans 40 with her gracious lines can be visited at our Hindeloopen office.

*Hans Visser*

## SPECIFICATIONS

<b>Dimensions</b>	12.50 x 3.60 x 1.60 (m)	<b>Builder</b>	Mekon/De Sluis Lemmer (romp&tanks) owner
<b>Built</b>	1998	<b>Cabins</b>	2
<b>Material</b>	Steel	<b>Berths</b>	6
<b>Engine(s)</b>	1 x Peugeot XDP490 diesel	<b>Hp/Kw</b>	55.00 (hp), 40.48 (kw)
<b>Asking price</b>	sold (VAT )	<b>Lying</b>	at sales office

## CONTACT

<b>Sales office</b>	De Valk Hindeloopen B.V.	<b>Telephone</b>	+31 514 52 40 00
<b>Address</b>	Oosterstrand 1 8713 JS Hindeloopen NL	<b>E-mail</b>	hindeloopen@devalk.nl

## DISCLAIMER

These particulars are given in good faith as supplied but cannot be guaranteed.



## GENERAL

Model	KOOPMANS 40
Type	sailing yacht
LOA (m)	12,50
LWL (m)	10,10
Beam (m)	3,60
Draft (m)	1,60
Year built	1998
Builder	Mekon/De Sluis Lemmer (romp&tanks) owner
Country	The Netherlands
Designer	Koopmans Design Nr. 269
Displacement (t)	16
Ballast (tonnes)	lead 6,5
CE norm	NA
Hull material	steel
Hull colour	green Dark
Hull thickness (mm)	5 & 4
Hull shape	S-bilged
Keel type	long keel
Superstructure material	steel
Superstructure (mm)	4
Deck plate thickness (mm)	4
Rubbing strake	stainless steel
Deck material	steel
Deck finish	non-skid paint
Superstructure deck finish	teak Birma 2002
Cockpit deck finish	teak Birma 2002
Antifouling (year)	2024
Dorades	2
Window frame	aluminium
Window material	tempered glass



Deckhatch	3 x Gebo
Portholes	6 x 3 x opening plus 2 x round
Insulation	foam
Radar arch	yes
Fuel tank (litre)	steel 440 integrated coated
Fuel daytank (litre)	steel 100
Level indicator (daytank)	yes
Freshwater tank (litre)	stainless steel 250
Level indicator (freshwater)	yes
Blackwater tank (litre)	stainless steel 50
Blackwater tank extraction	deck extraction + uw line
Greywater tank (litre)	polyethylene 40
Wheel steering	rack & pinion Jefa (Whitlock)
Outside helm position	yes
Emergency tiller	yes
More info on paintwork	Hull was sandblasted both sides and epoxy tar treated in 2000

## ACCOMMODATION

Cabins	2
Berths	6
Interior	mahogany
Layout	Private
Floor	Mahogany and ebbe
Open cockpit	yes
Saloon	yes
Headroom saloon (m)	1,88
Heating	stove diesel Dickinson
Chart table	yes
Aft Cabin	yes
Galley	L shaped
Countertop	wood



Sink	stainless steel Double
Cooker	calor gas 3 Burner Force 10
Oven	Integrated with stove
Fridge	Isotherm 2022 approx 40 l.
Hot water system	220V + engine 40 L Isotemp Boiler
Water pressure system	yes
Owners cabin	double bed Headroom approx 1,86
Bed length (m)	2,00 x 1,40
Wardrobe	hanging/drawers/shelves
Bathroom	separate
Toilet	separate
Toilet system	vacuum Lavac manual
Wash basin	in the bathroom
Shower	separate
Guest cabin 1	double bed Headroom approx 1,86
Bed length (m)	2,00 x 1,40
Wardrobe	hanging and shelves
Bathroom	shared
Toilet	shared
Shower	shared

## MACHINERY

No of engines	1
Make	Peugeot
Type	XDP490
HP	55
kW	40.48
Fuel	diesel
Year installed	1998
Year of overhaul	1999 de jong Joure
Maximum speed (kn)	7,5



Cruising speed (kn)	6,5
Consumption (l/hr)	5
Engine hours	2100
Engine cooling system	freshwater heat exchanger
Drive	shaft
Shaft seal	Grease
Engine controls	mechanical
Gearbox	hydraulic PRM
Thrust bearing	Python
Propeller type	reversible Max prop plus spare fixed prop
Propeller blades	3
Propeller shaft material	stainless steel
Shaft lubrication	grease
Manual bilge pump	yes
Electric bilge pump	yes
Electrical installation	12 V DC and 220 V AC
Batteries	2
Start battery	1 x 65 AH 2020
Service battery	1 x 200 AH gel 2023
Battery monitor	Mastervolt
Battery charger	Mastervolt
Wind generator	AirX
Shorepower	with cable
Insulation transformer	Victron

## NAVIGATION

Compass	Plastimo
Electric compass	Simrad
Depth sounder	Simrad
Depth sounder/log	yes
Log	Simrad



VHF	Debedg
Autopilot	Simrad on Jefa drive
Wind vane steering install.	Bouwvaan Stainless (stored at owners home)
Radar	Raymarine
GPS	Simrad
Plotter	Simrad CP 30
Plotter/GPS	B & G Zeus 2
Electronic chart(s)	yes
AIS receiver	yes
Navigation lights	yes

## EQUIPMENT

Fixed windscreen	yes
Sprayhood with grab rail	yes
Boarding ladder	yes
Anchor	Bruce 30 kg
Anchor chain	50 M.
Windlass	Simpson lawrence 550 Sea tigre
Sea railing	yes
Grab rail (superstructure)	wood
Pushpit	yes
Pulpit	yes
Fenders	yes
Mooring lines	yes
Spare parts	yes
Tools	yes
Radio-cd player	yes
Speakers in salon	yes
Clock - barometer	yes
Fire extinguisher	yes



## RIGGING

Rigging	cutter
Standing rigging	wire New 2024
Brand mast	Seldén
Material mast	aluminium
Spreaders	2 sets
Mainsail	Molenaar 2004 36 m2 Brown
Mainsail cover	yes
Cutterstay	yes
Jib	Molenaar 2004 20 m2 Brown
Genoa	Molenaar 2004 39 m2 Brown
Genoa furler	Furlex 200S manual
Gennaker	Hide 2012 60 m2
Stormjib	yes
Reefing System	slabreefing 4 reefs
Backstay adjuster	mechanical
Boomvang	tackle
Primary sheet winch	2 x Andersen 2 Sp ST 46
Secondary sheet winch	2 x Andersen 2 Sp ST 40
Halyard winches	2 x Andersen 2 Sp 40
Reefing winch	1 x Andersen 30
Winchcovers	yes





# KOOPMANS 40















# KOOPMANS 40











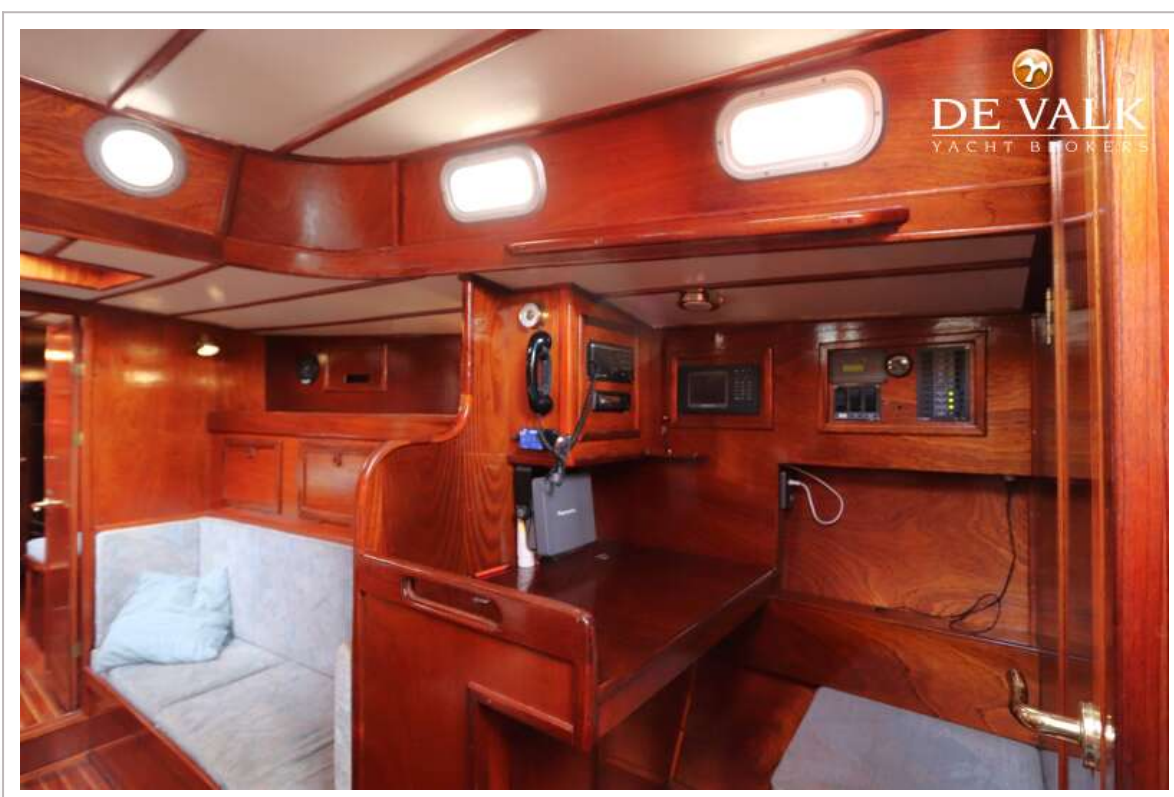


# KOOPMANS 40



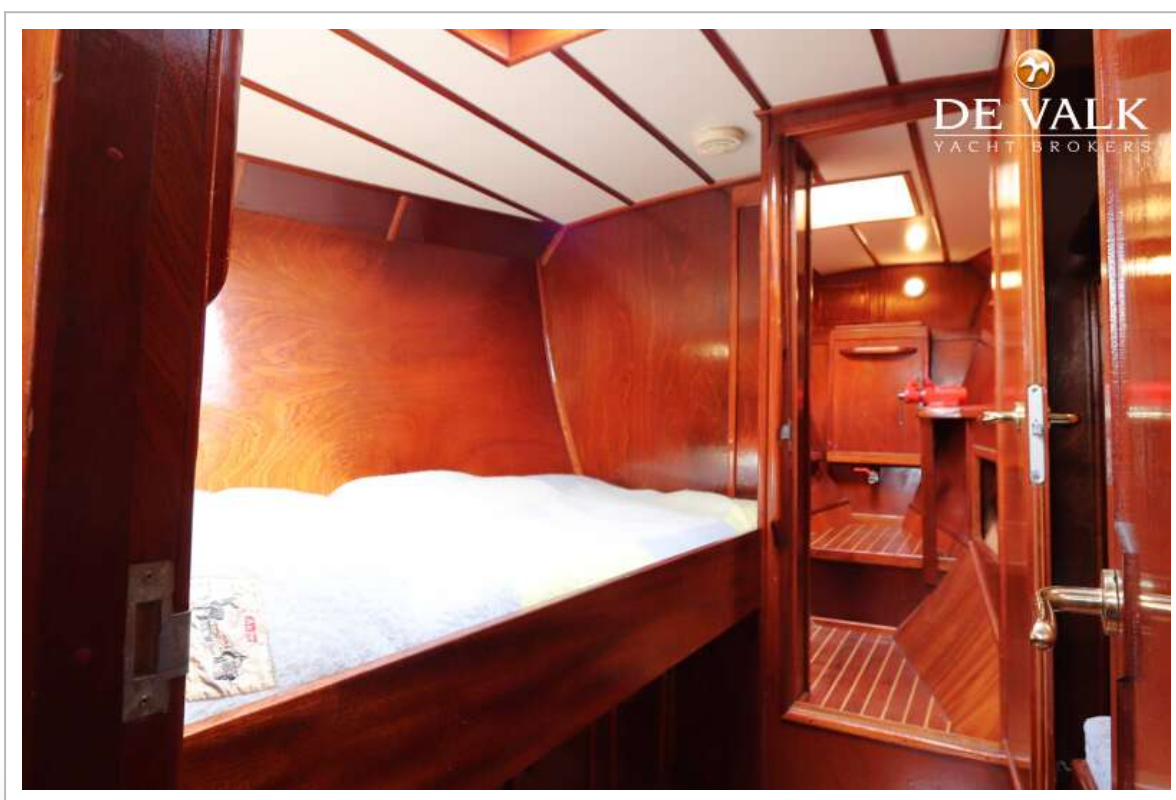
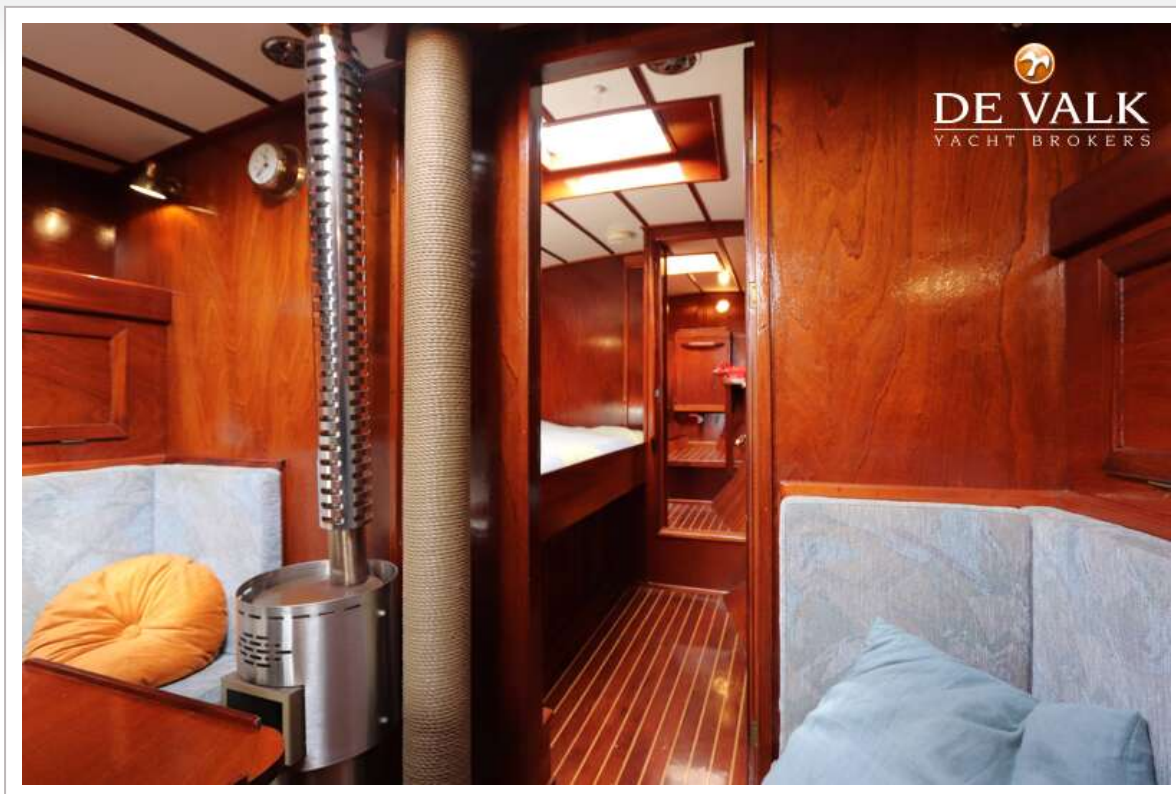


# KOOPMANS 40

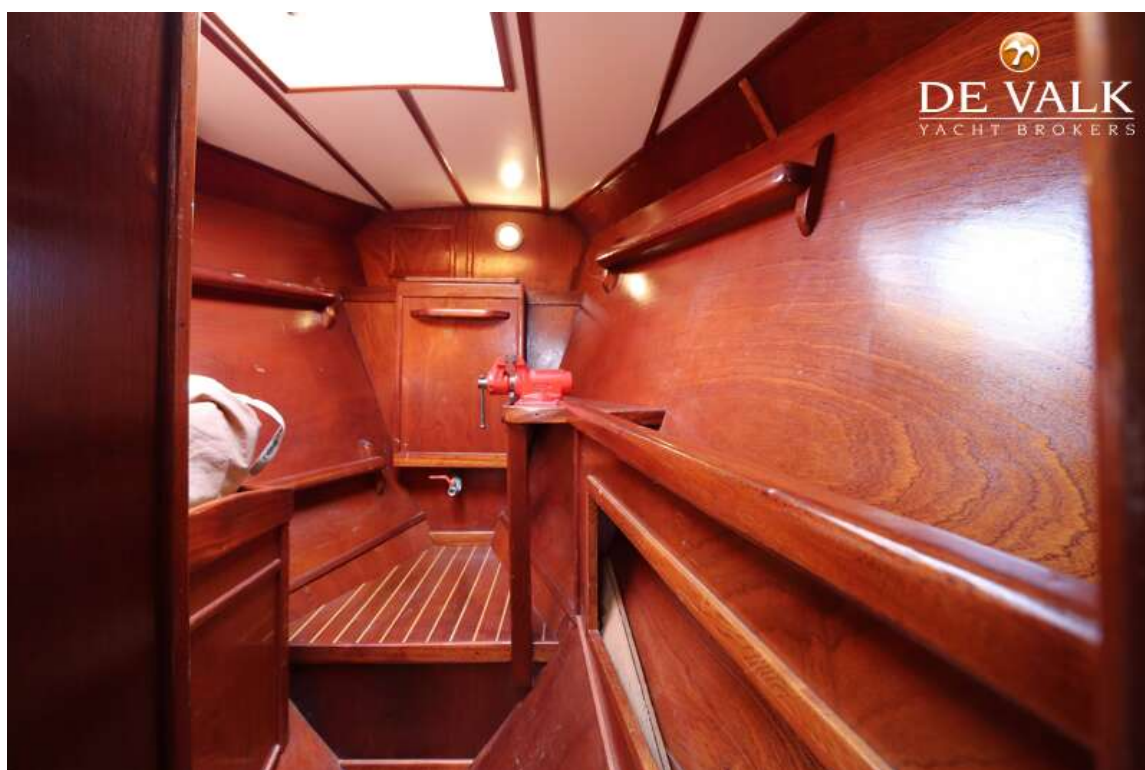








# KOOPMANS 40

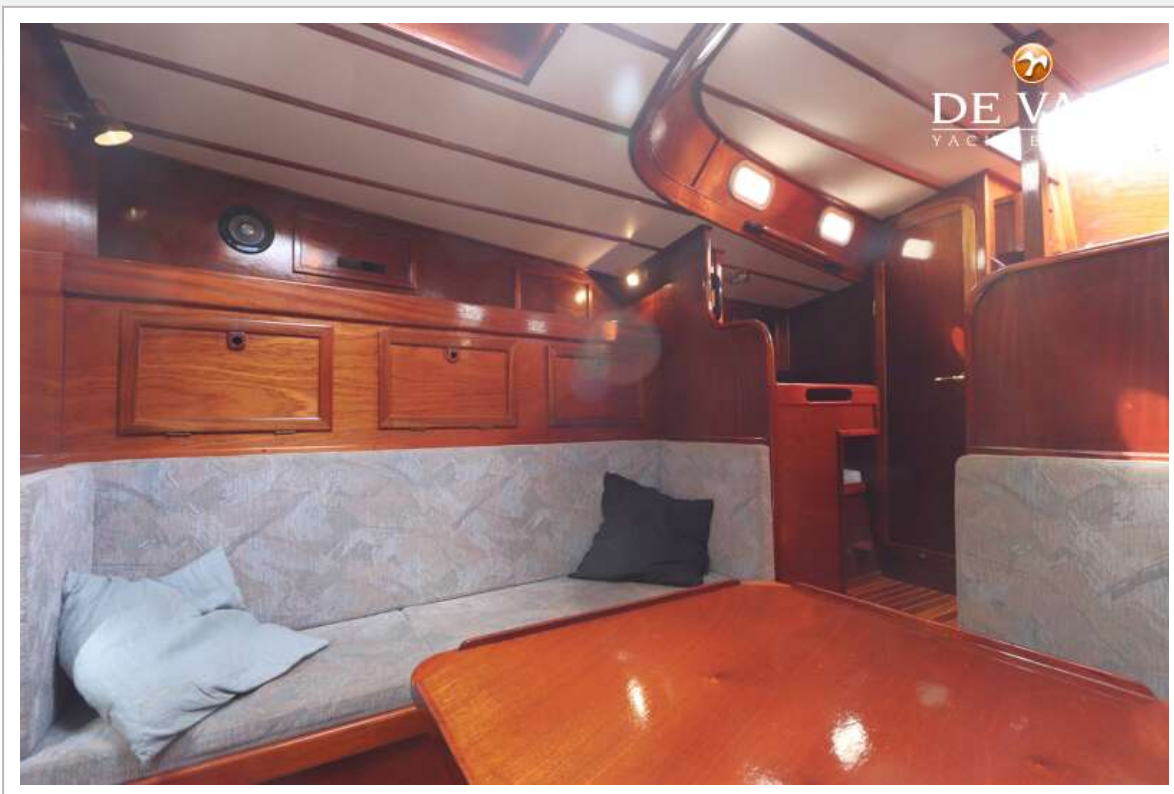




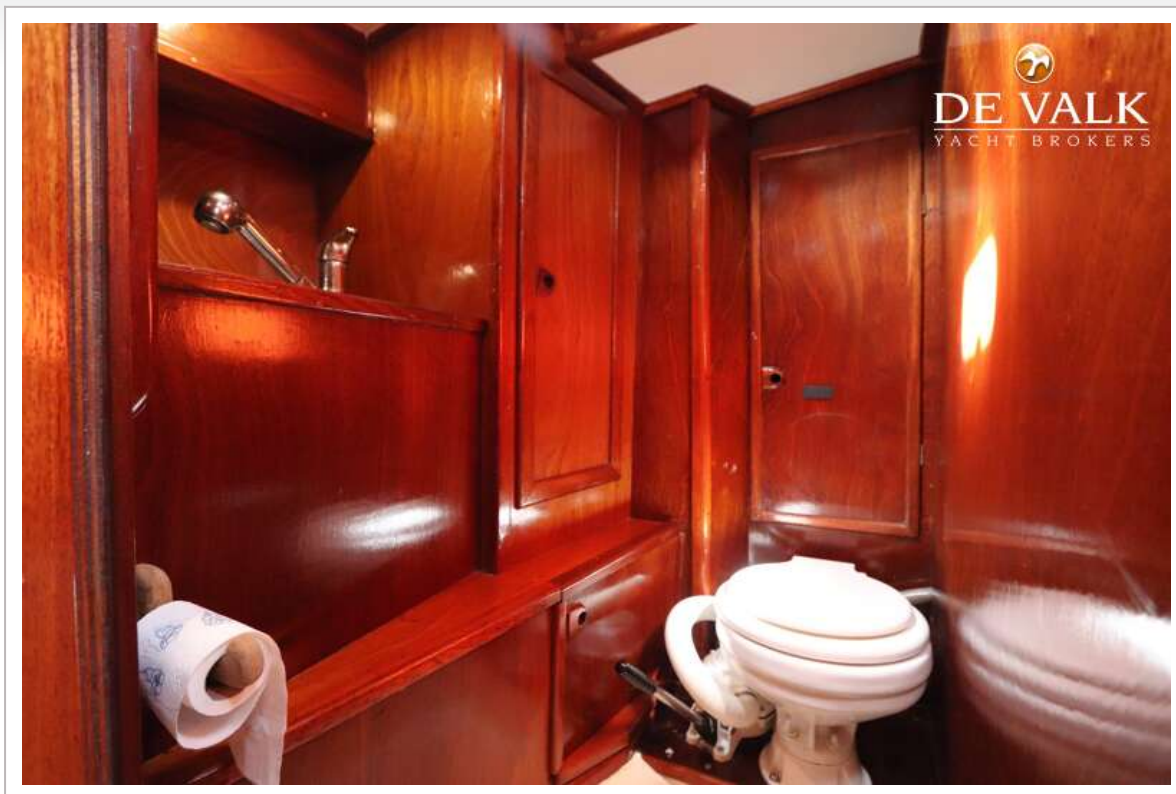
# KOOPMANS 40



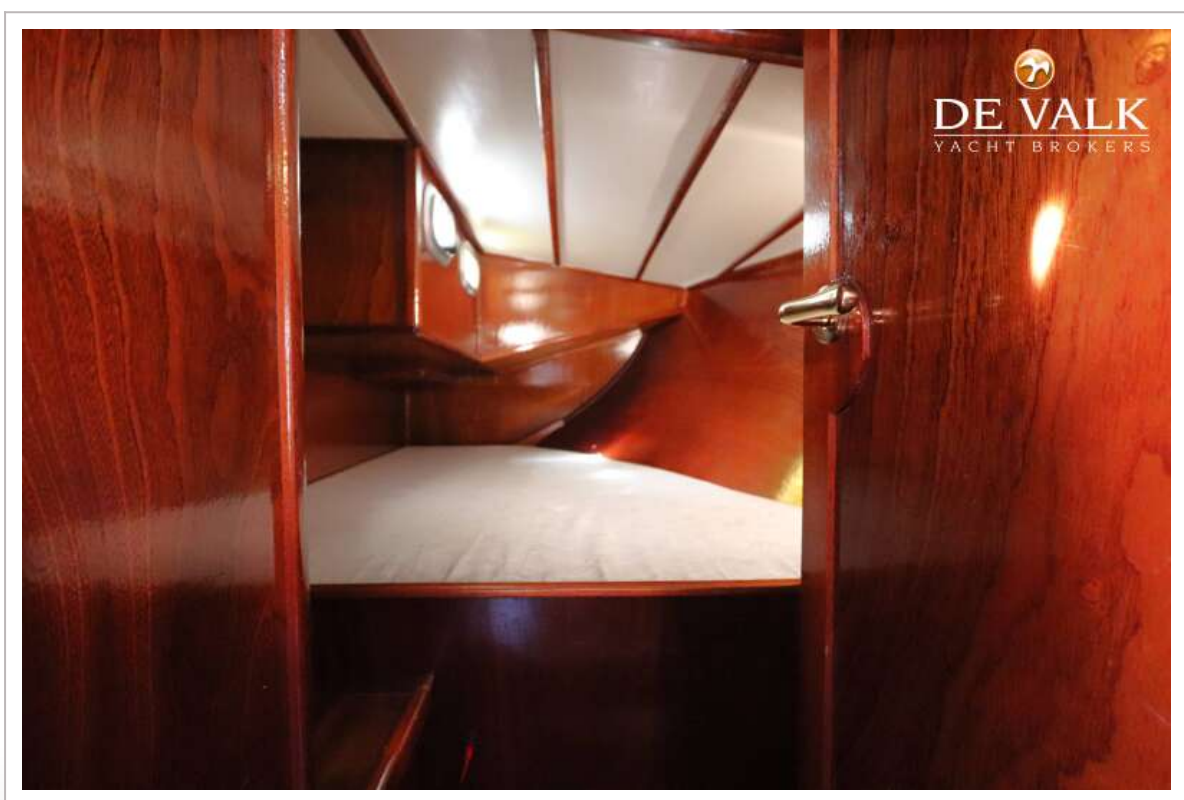
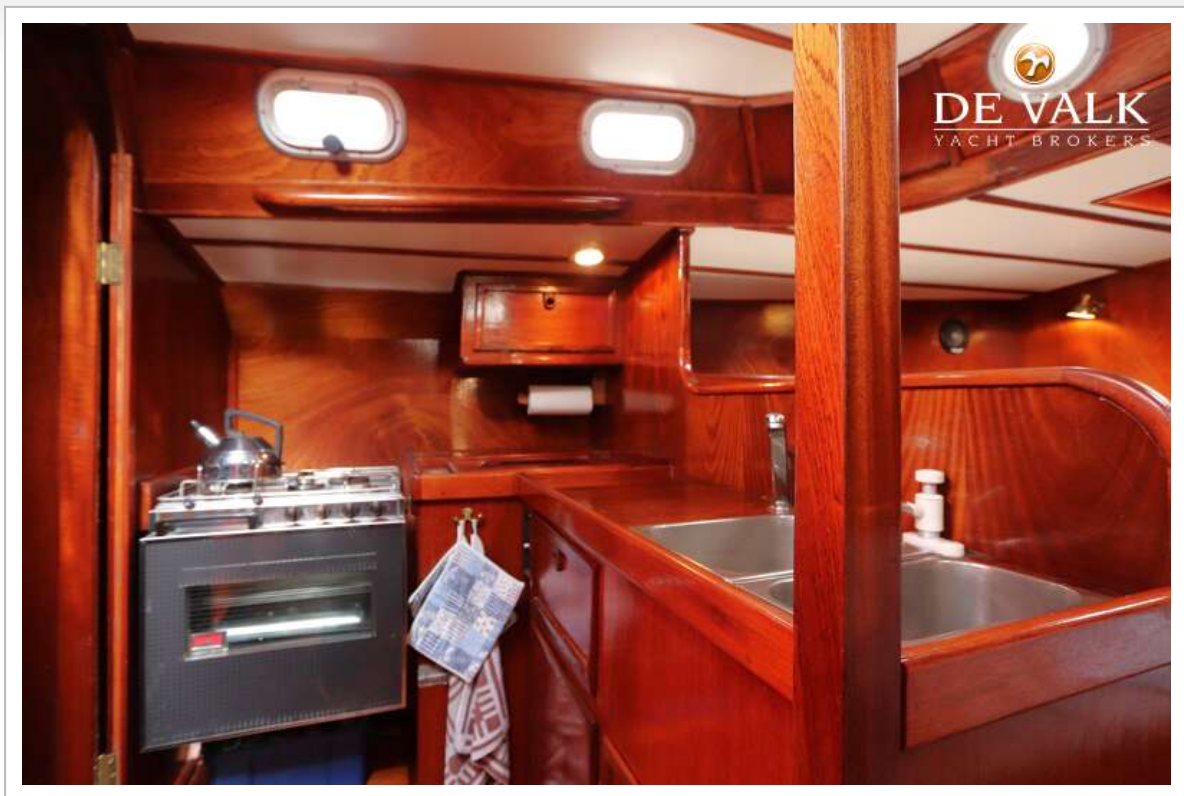
# KOOPMANS 40







# KOOPMANS 40





# KOOPMANS 40

