



BAYLINER 288 DISCOVERY



DE VALK
YACHT BROKERS

BAYLINER 288 DISCOVERY

BROKER'S COMMENTS

The Bayliner 288 Discovery offers just what you are looking for when it comes to getting away in the weekend and holidays. She has a comfortable full beam cabin with panoramic view and good overnighting accommodations for 4 up to 6 persons. In excellent condition, has seen very little use.

Marc Weijenberg

SPECIFICATIONS

Dimensions	10.00 x 3.05 x 0.97 (m)	Builder	Bayliner Yachts
Built	2005	Cabins	2
Material	GRP	Berths	6
Engine(s)	1 x Mercruiser 350 Mag MPI Bra petrol	Hp/Kw	300.00 (hp), 220.50 (kw)
Asking price	sold (VAT)	Lying	at sales office

CONTACT

Sales office	De Valk Sint Annaland	Telephone	+31 166 601 000
Address	Koelhuisweg 4 4697 RM Sint Annaland The Netherlands	E-mail	sintannaland@devalk.nl

DISCLAIMER

These particulars are given in good faith as supplied but cannot be guaranteed.



BAYLINER 288 DISCOVERY

GENERAL

Model	BAYLINER 288 DISCOVERY
Type	motor yacht
LOA (m)	10,00
Beam (m)	3,05
Draft (m)	0,97
Air draft (m)	3,12
Headroom (m)	1,94
Year built	2005
Builder	Bayliner Yachts
Country	U.S.A.
Designer	Bayliner Yachts
Displacement (t)	3,67
Hull material	GRP
Hull shape	Deep-V
Flybridge	yes
Radar arch	yes
Fuel tank (litre)	Plastic 427
Freshwater tank (litre)	Plastic 129
Blackwater tank (litre)	Plastic 98
Blackwater tank extraction	Pump
Wheel steering	Hydraulic
Flybridge helm position	Hydraulic

ACCOMMODATION

Cabins	2
Berths	6
Interior	Cherry
Floor	Carpet
Open cockpit	yes
Deck saloon	yes



BAYLINER 288 DISCOVERY

Headroom saloon (m)	1,94
Dinette to convert into berth	yes
Galley	yes
Cooker	Electric Origo
Microwave	Tappan Tappan
Fridge	Norcold Norcold
Hot water system	Boiler 220v
Water pressure system	Electrical pump
Owners cabin	V-bed
Wash basin	yes
Guest cabin 1	Double bed
Bathroom	yes
Toilet system	yes
Wash basin	yes
Shower	yes
Wash basin	yes

MACHINERY

No of engines	1
Make	Mercuriser
Type	350 Mag MPI Bra
HP	300,00
kW	220,50
Fuel	petrol
Year installed	2005
Maximum speed (kn)	30
Engine hours	125
Engine cooling system	Seawater
Drive	Z-drive
Engine controls	Bowden cable
Bowthruster	Electric Vetus 55kgf



BAYLINER 288 DISCOVERY

Propeller type	Fixed Duoprop
Electrical installation	12/220v
Start battery	yes
Service battery	yes
Battery charger	Flyback 10 amp
Shorepower	yes
Trimtabs	Bennett

NAVIGATION

Compass	Danforth
Depth sounder	Navman
VHF	Navman 7100
Radar	Navman dome
GPS	Navman
Plotter	Navman 8120

EQUIPMENT

Bathing platform	yes
Boarding ladder	yes
Transom door	yes
Anchor	Bruce
Anchor chain	yes
Windlass	Electrical Vetus
Sea railing	Stainless steel
Wiper	3 x
Radar reflector	yes
Fenders	yes
Mooring lines	yes
Radio-cd player	Aquatronic
Fire extinguisher	yes



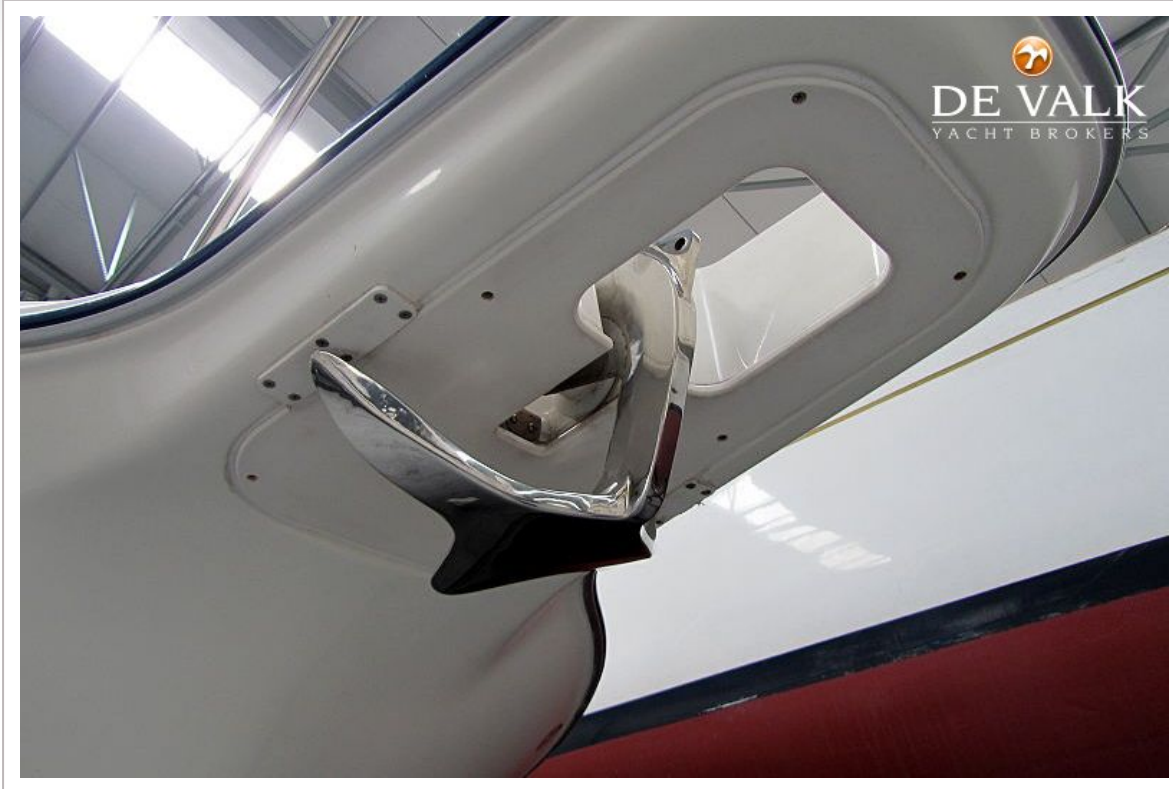
BAYLINER 288 DISCOVERY



BAYLINER 288 DISCOVERY



BAYLINER 288 DISCOVERY



BAYLINER 288 DISCOVERY



BAYLINER 288 DISCOVERY



BAYLINER 288 DISCOVERY



BAYLINER 288 DISCOVERY



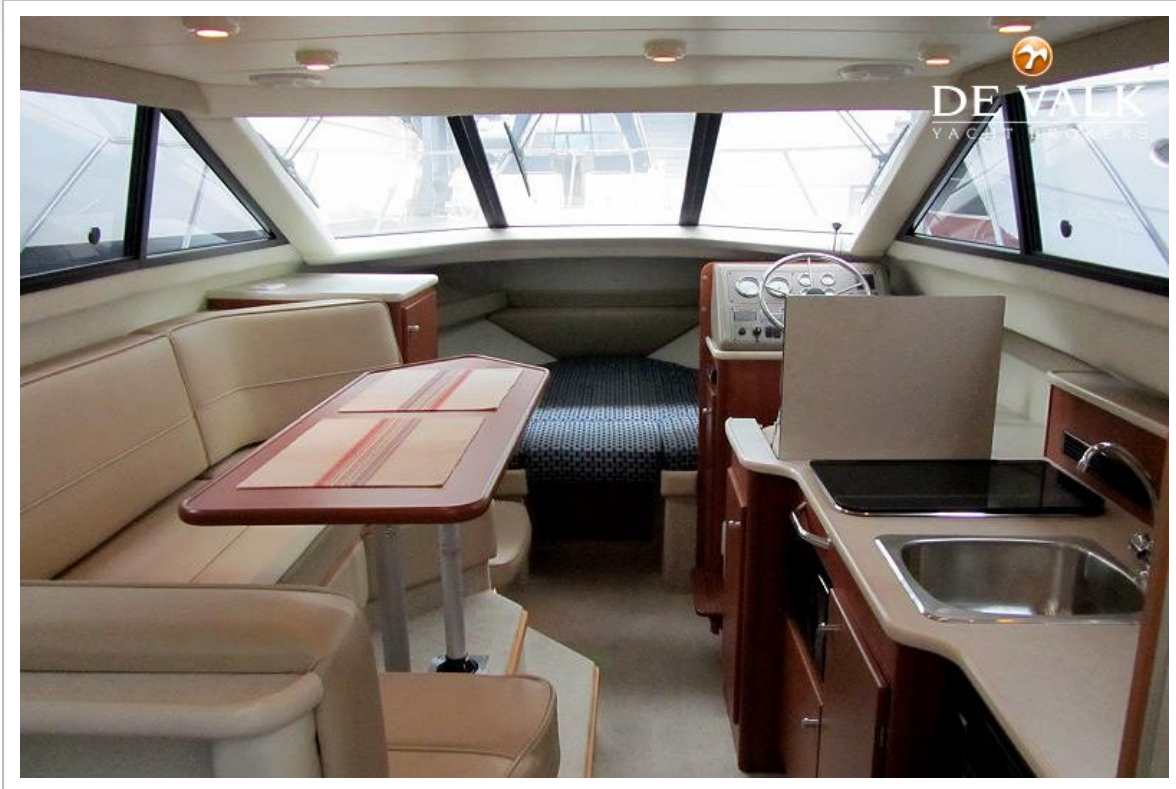
BAYLINER 288 DISCOVERY



BAYLINER 288 DISCOVERY



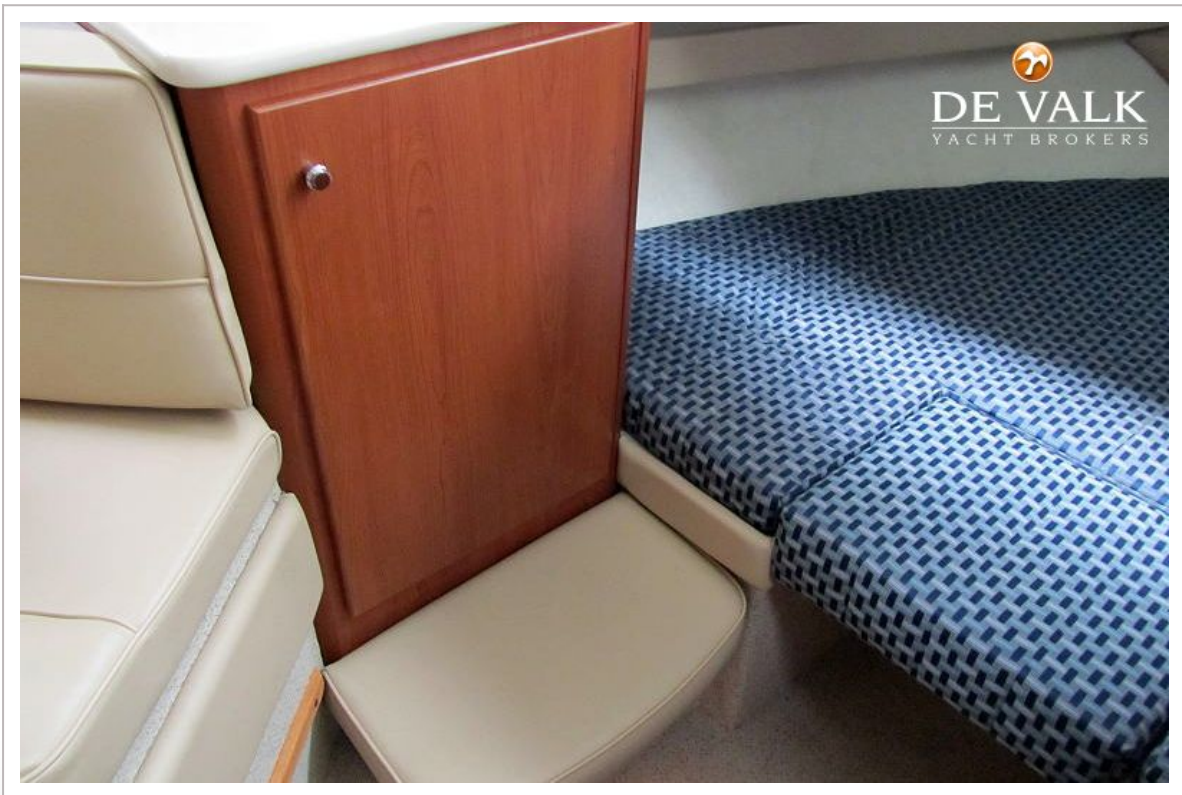
BAYLINER 288 DISCOVERY



BAYLINER 288 DISCOVERY



BAYLINER 288 DISCOVERY



BAYLINER 288 DISCOVERY



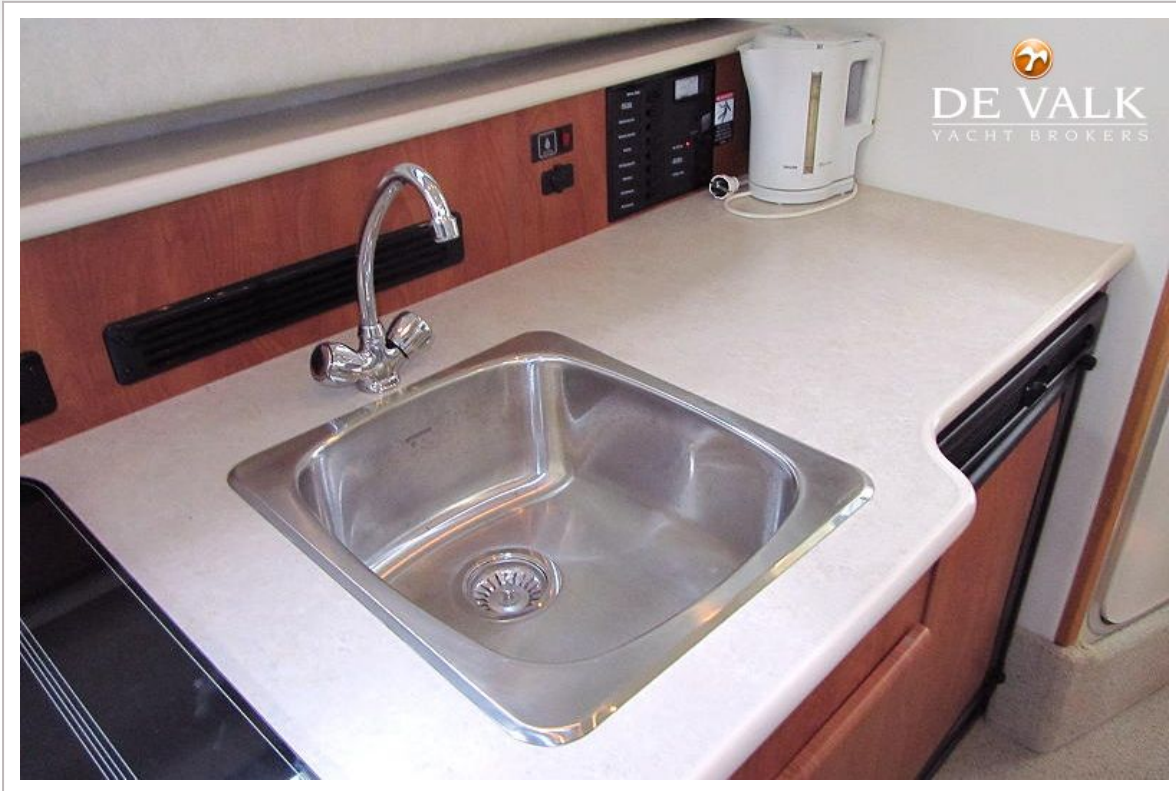
BAYLINER 288 DISCOVERY



BAYLINER 288 DISCOVERY



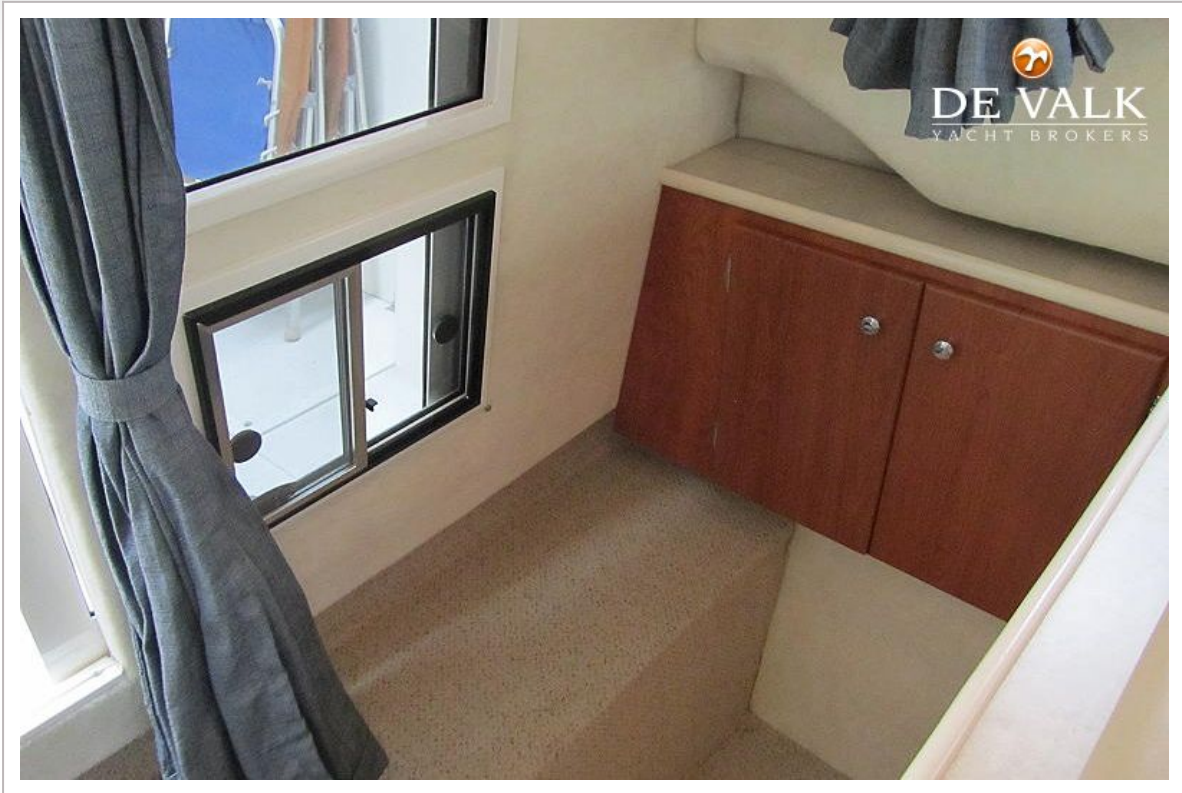
BAYLINER 288 DISCOVERY



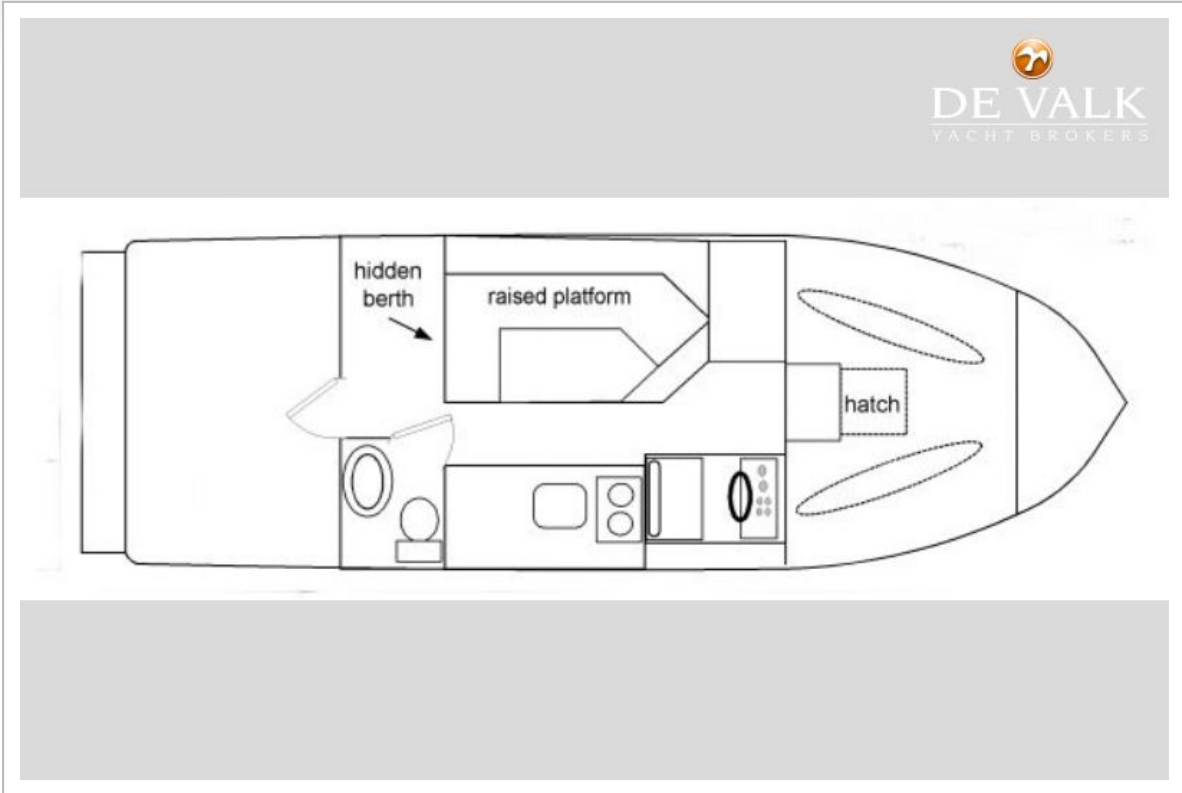
BAYLINER 288 DISCOVERY



BAYLINER 288 DISCOVERY



BAYLINER 288 DISCOVERY



BAYLINER 288 DISCOVERY



BAYLINER 288 DISCOVERY

