



## FAIRLINE PHANTOM 46

# FAIRLINE PHANTOM 46

## BROKER'S COMMENTS

This flybridge yacht is distinguished by its appearance, correct proportions and condition. Inside it offers great comfort in a spacious saloon, master cabin and two guest cabins. This yacht has been professionally maintained and is a must to see.

*Stef Struijk*

## SPECIFICATIONS

<b>Dimensions</b>	14.59 x 4.32 x 1.12 (m)	<b>Builder</b>	Fairline Boats PLC
<b>Built</b>	2003	<b>Cabins</b>	3
<b>Material</b>	GRP	<b>Berths</b>	7
<b>Engine(s)</b>	2 x Volvo Penta TAM75EDC diesel	<b>Hp/Kw</b>	2 x 480.00 (hp), 352.80 (kw)
<b>Asking price</b>	sold (VAT )	<b>Lying</b>	at sales office

## CONTACT

<b>Sales office</b>	De Valk Sint Annaland B.V.	<b>Telephone</b>	+31 (0)166 601 000
<b>Address</b>	Koelhuisweg 4 4697 RM Sint Annaland NL	<b>E-mail</b>	sintannaland@devalk.nl

## DISCLAIMER

These particulars are given in good faith as supplied but cannot be guaranteed.



# FAIRLINE PHANTOM 46

## GENERAL

Model	FAIRLINE PHANTOM 46
Type	motor yacht Motor yacht
LOA (m)	14,59
Beam (m)	4,32
Draft (m)	1,12
Air draft (m)	5,02
Headroom (m)	1,91
Year built	2003
Builder	Fairline Boats PLC
Country	Great Britain
Designer	Bernard Olesinski
Displacement (t)	14,3
CE norm	B
Hull material	GRP
Hull colour	White
Hull shape	Deep-V
Superstructure material	GRP
Deck finish	Moulded in
Cockpit deck finish	Teak
Antifouling (year)	2013
Window frame	Aluminium 2x electric window
Window material	Toughened glass
Flybridge	yes
Flybridge cover	old
Radar arch	
Fuel tank (litre)	Stainless Steel 1591
Level indicator (fuel tank)	yes
Freshwater tank (litre)	GRP 752
Level indicator (freshwater)	yes
Blackwater tank (litre)	GRP 127



# FAIRLINE PHANTOM 46

Level indicator (blackwater)	yes
Wheel steering	Hydraulic
Flybridge helm position	Hydraulic

## ACCOMMODATION

Cabins	3
Berths	7
Interior	Cherry
Floor	Carpet
Headroom saloon (m)	1,91
Heating	Marine Air
Air-conditioning	Reverse cycle airco Marine Air, all cabins
Dinette	yes
Galley	yes
Countertop	Corian Brand: Avonite
Sink	Stainless steel Double
Cooker	Electric 2-burner AEG
Extractor	yes
Microwave	Sharp with grill
Fridge	with freezer compartment Frontloader
Hot water system	220v + engine
Water pressure system	Electrical
Owners cabin	French bed
Bed length (m)	1,95
Bathroom	en suite
Toilet	yes
Toilet system	Electric
Wash basin	
Shower	yes
Guest cabin 1	Single bed 2x
Guest cabin 2	Bunk bed



# FAIRLINE PHANTOM 46

Bathroom	yes
Toilet	yes
Toilet system	Electric
Wash basin	yes
Shower	yes

## MACHINERY

No of engines	2
Make	Volvo Penta
Type	TAMD75EDC
HP	480,00
kW	352,80
Fuel	diesel
Year installed	2003
Maximum speed (kn)	31
Cruising speed (kn)	22.00
Consumption (l/hr)	50.00
Range (nm)	240
Engine hours	415 en 343
Engine cooling system	Freshwater heatexchanger
Drive	shaft
Engine controls	Electrical
Gearbox	Mechanical
Bowthruster	Electric Sidepower
Propeller type	Fixed
Propeller blades	4
Shaft lubrication	Tides seal
Manual bilge pump	yes
Electric bilge pump	yes
Bilge alarm	yes
Electrical installation	yes



# FAIRLINE PHANTOM 46

Generator	wet exhaust Onan
Start battery	1
Service battery	2
Battery monitor	yes
Battery charger	Mastervolt Charge Master 12/50-3 (maart 2014)
Shorepower	yes
Trimtabs	yes
Extra info	Consumption is pro engine

## NAVIGATION

Compass	2x Ritchie
Depth sounder	Raymarine ST60
Log	Raymarine ST60
Repeater	yes
VHF	Shipmate RS 8400
Autopilot	Raymarine ST6001+
Radar/GPS/plotter	Raymarine C90-wide, inside and out
AIS receiver	yes

## EQUIPMENT

Bimini	yes
Cockpit cushions	yes
Cockpit table	yes
Cockpit chairs	yes
Bathing platform	yes
Boarding ladder	yes
Transom door	yes
Gangway	Hydraulic Besenzoni
Deck shower	yes
Anchor	yes
Anchor chain	yes



# FAIRLINE PHANTOM 46

Windlass	Electrical Lofrans
Deck wash	yes
Sea railing	Stainless steel
Wiper	2x
Horn	
Radar reflector	yes
Fenders	yes
Mooring lines	yes
TV	yes
Radio-cd player	Kenwood with CD-changer
Cockpit speakers	yes
Clock - barometer	yes
Fire extinguisher	yes
Auto extinguisher system	In engine room
Extra info	Suncushions and cockpitcushions 2011, Flatscreen TV



# FAIRLINE PHANTOM 46





# FAIRLINE PHANTOM 46



# FAIRLINE PHANTOM 46





# FAIRLINE PHANTOM 46



# FAIRLINE PHANTOM 46





## FAIRLINE PHANTOM 46



# FAIRLINE PHANTOM 46





# FAIRLINE PHANTOM 46



# FAIRLINE PHANTOM 46





# FAIRLINE PHANTOM 46



## FAIRLINE PHANTOM 46

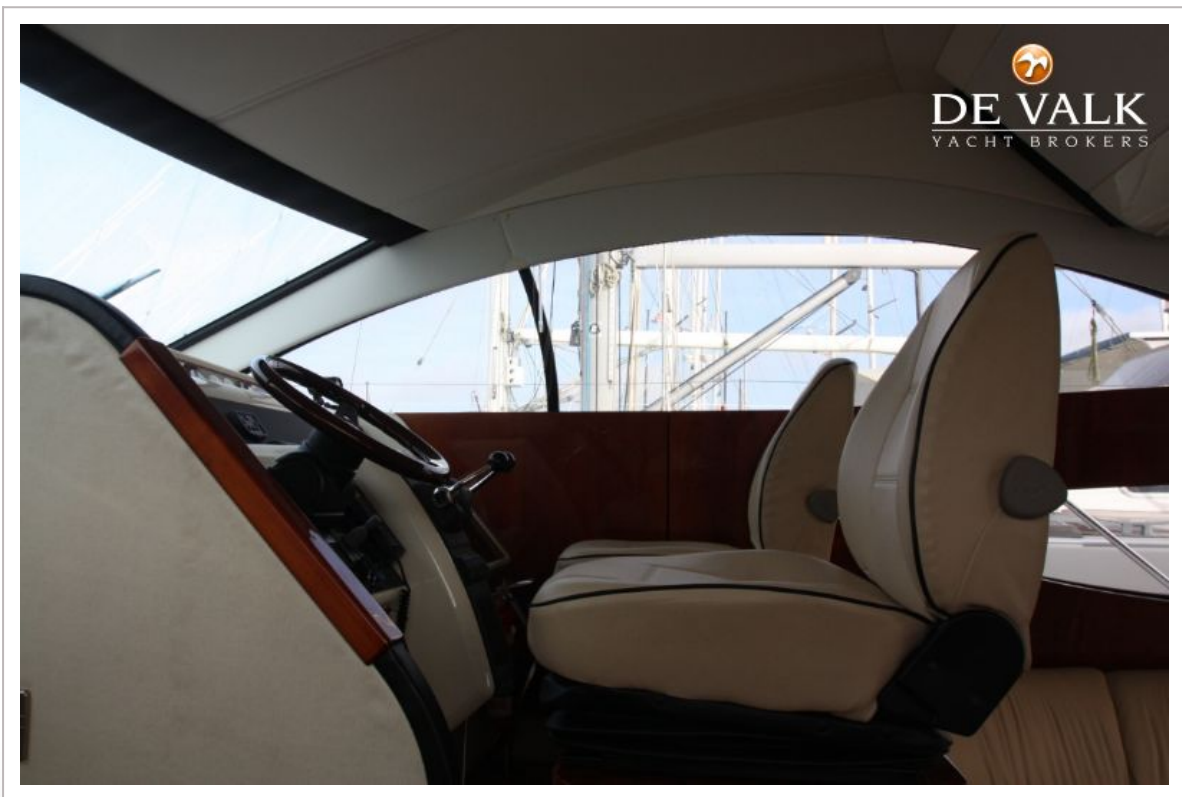




## FAIRLINE PHANTOM 46

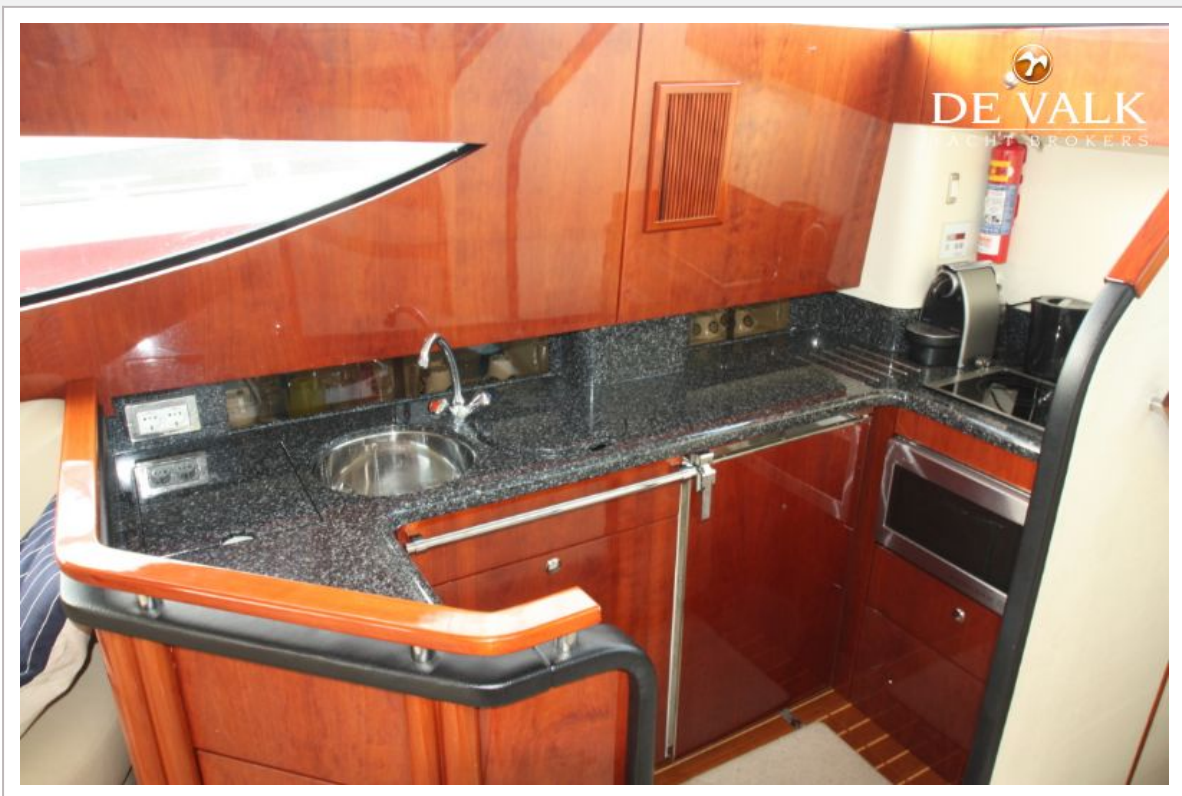


# FAIRLINE PHANTOM 46

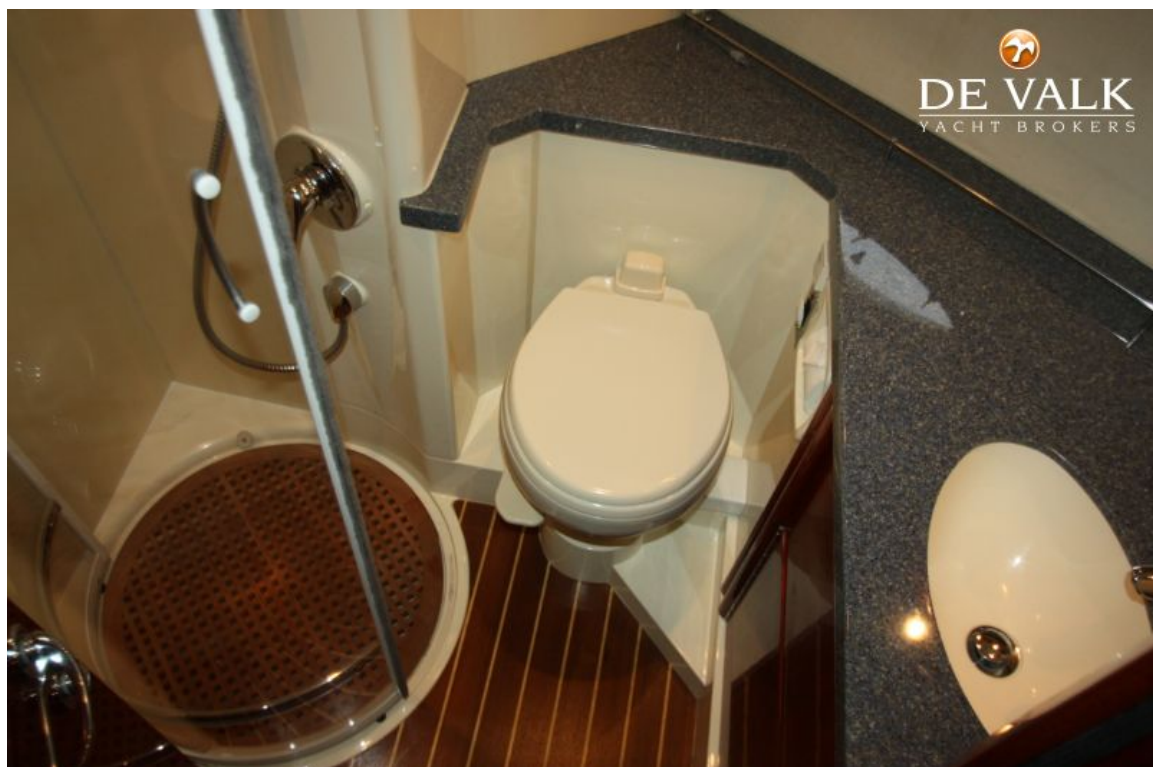




## FAIRLINE PHANTOM 46

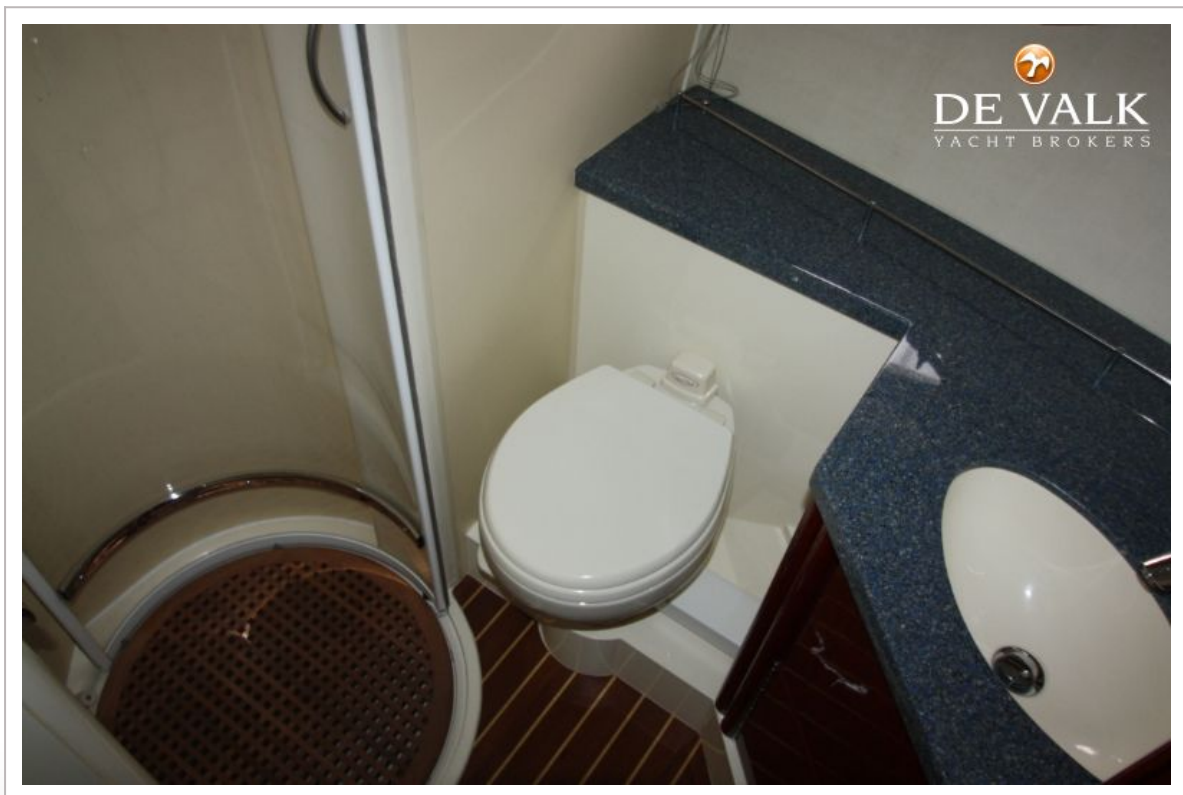


# FAIRLINE PHANTOM 46

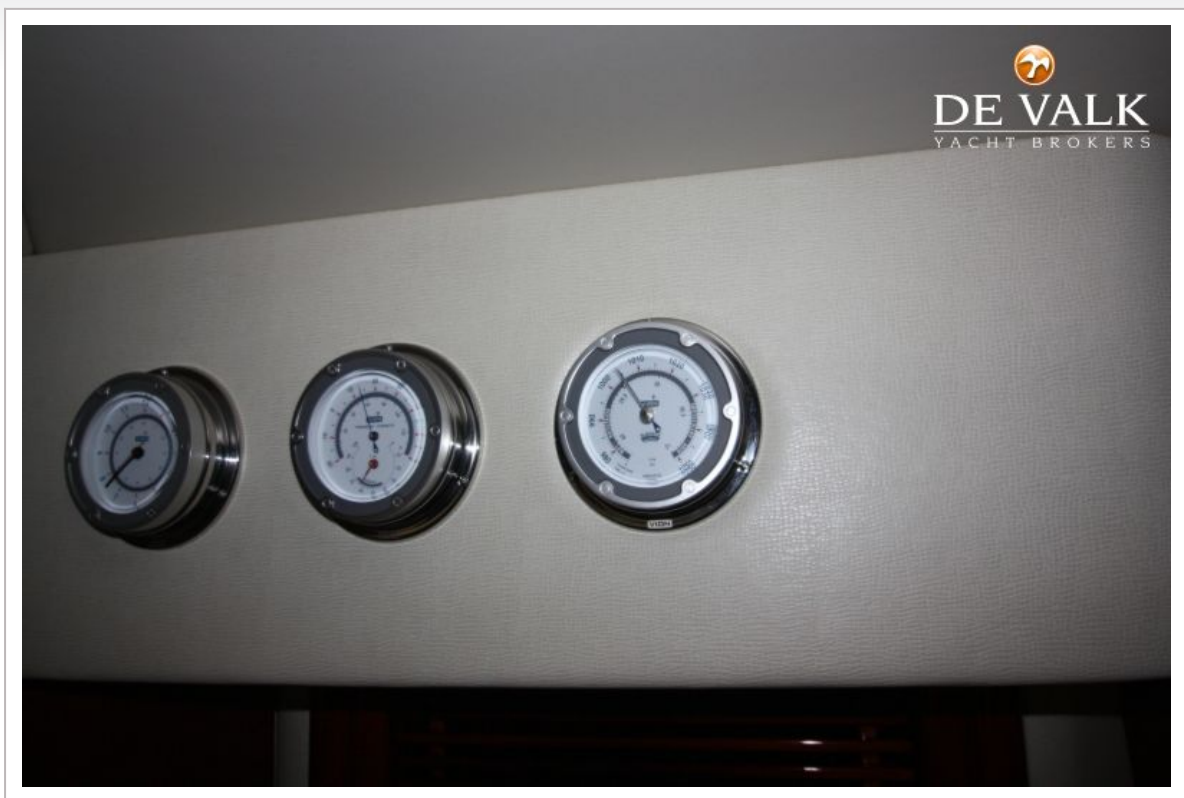




## FAIRLINE PHANTOM 46



# FAIRLINE PHANTOM 46





# FAIRLINE PHANTOM 46

