



DE VALK
YACHT BROKERS



DEHLER 47 SQ



DE VALK
YACHT BROKERS

BROKER'S COMMENTS

The Dehler 47 SQ is a Judel & Vrolijk design, in 2003 / 2005 awarded as "Boat of the Year". Very good sailing performance and easy to handle with E-winchs and a good deck lay-out and new electronics/auto pilot. The boat is very well equiped with new high performance cruising sails, good navigation and safety equipment. Very clean interior with 3 cabins, 2 bathrooms and a seperate shower. In the hands of the 2th owner ready to start new adventures. To be seen in Friesland, contact De Valk Thuishaven to make an appointment

Ger Bayens

SPECIFICATIONS

| | | | |
|---------------------|------------------------------------|----------------|------------------------|
| Dimensions | 14.28 x 4.21 x 2.40 (m) | Builder | Dehler Yachtbau GmbH |
| Built | 2006 | Cabins | 3 |
| Material | GRP | Berths | 6 |
| Engine(s) | 1 x Volvo Penta D2-75/150S, diesel | Hp/Kw | 75.00 (hp), 55.13 (kw) |
| Asking price | sold (VAT) | Lying | contact sales office |

CONTACT

| | | | |
|---------------------|--|------------------|----------------------|
| Sales office | De Valk Thuishaven | Telephone | +31 35 5829042 |
| Address | Marinaweg 8 (postal address) 1361 AC Almere NL | E-mail | thuishaven@devalk.nl |

DISCLAIMER

These particulars are given in good faith as supplied but cannot be guaranteed.



GENERAL

| | |
|-----------------------------------|--------------------------|
| Model | DEHLER 47 SQ |
| Type | sailing yacht |
| LOA (m) | 14,28 |
| LWL (m) | 12,60 |
| Beam (m) | 4,21 |
| Draft (m) | 2,40 |
| Air draft (m) | 23,15 |
| Headroom (m) | 2,00 |
| Year built | 2006 |
| Launched | 2007 |
| Builder | Dehler Yachtbau GmbH |
| Country | Germany |
| Designer | Judel & Vrolijk |
| Displacement (t) | 12,8 |
| CE norm | A |
| Hull material | GRP |
| Hull colour | off-white |
| Hull shape | round-bilged |
| Keel type | fin keel with bulb |
| Superstructure material | GRP |
| Rubbing strake | wood With s.s. edge |
| Deck material | GRP |
| Deck finish | teak |
| Superstructure deck finish | teak |
| Cockpit deck finish | teak |
| Antifouling (year) | Seajet Teichi 023 (2020) |
| Dorades | 2x |
| Window frame | aluminium |
| Window material | polycarbonate |
| Deckhatch | yes |



Portholes

| | |
|-------------------------------------|---|
| Radar arch | White painted with leaning position |
| Fuel tank (litre) | stainless steel 270 in 2 tanks |
| Fuel tank 2 (litre) | stainless steel 104 in 2 extra tanks |
| Level indicator (fuel tank) | yes |
| Freshwater tank (litre) | stainless steel 400 in 2 tanks |
| Level indicator (freshwater) | yes |
| Blackwater tank (litre) | stainless steel 60 |
| Level indicator (blackwater) | Defect |
| Blackwater tank extraction | deck extraction + pump |
| Wheel steering | cable steering Carbon Y-spoke 1,80 mtr |
| Emergency tiller | yes |
| More info on hull | vinylester hars, (500 Kg weight saving) |
| More info on paintwork | underwater body with 5 layers epoxy paint |
| Extra info | 2x extra SS clamps and Line lockers |

ACCOMMODATION

| | |
|--------------------------------|--|
| Cabins | 3 |
| Berths | 6 |
| Interior | teak |
| Layout | 3 cabins, 2x head, saloon |
| Floor | teak and holly Covered with carpet |
| Saloon | cushions covering in saloon renewed Alcantara (2016) |
| Headroom saloon (m) | 2,00 |
| Heating | diesel ducted hot air Webasto Airtop Evo 55 (2019) with 7 openings / insulated hoses |
| Navigation center | yes |
| Chart table | yes |
| Aft Cabin | with double berth 2x |
| Dinette | yes |
| Opening door to cockpit | main entrance door slides down |



| | |
|------------------------------|--|
| Galley | yes |
| Countertop | corian |
| Sink | stainless steel 2x |
| Cooker | calor gas Force 10 / 3-flame Safety test gas system (2020) |
| Oven | calor gas Force 10 |
| Fridge | toploaders 1x 60 & 1x 80 ltr 2x Isotherm GE150 (2018) |
| Hot water system | 220V + engine 40 ltr |
| Water pressure system | electrical |
| Owners cabin | double bed |
| Bed length (m) | cushions renewed (2017) Ca. 2,00 |
| Wardrobe | hanging/drawers/shelves |
| Bathroom | en suite |
| Toilet | en suite |
| Toilet system | manual |
| Wash basin | in the bathroom |
| Shower | shared |
| Extra info | there is a shower sprayer handle in owner's bathroom |
| Guest cabin 1 | double bed |
| Bed length (m) | cushions renewed (2017) Ca. 2,00 |
| Wardrobe | hanging and shelves |
| Bathroom | shared |
| Toilet | shared |
| Toilet system | manual |
| Wash basin | in the bathroom |
| Shower | shared By round glass door separated from the toilet |
| Guest cabin 2 | double bed |
| Bed length (m) | cushions renewed (2017) Ca. 2,00 |
| Wardrobe | hanging and shelves |
| Bathroom | shared |
| Toilet | shared |
| Toilet system | manual |
| Wash basin | in the bathroom |



Shower shared By round glass door separated from the toilet
Extra info Ceiling parts in the saloon and 3 cabins renewed (2017)

MACHINERY

No of engines 1
Make Volvo Penta
Type D2-75/150S,
HP 75
kW 55,13
Fuel diesel
Year installed 2006
Year of overhaul 2016
Maximum speed (kn) 8,5
Cruising speed (kn) 7
Consumption (l/hr) 4
Engine hours 568
Engine cooling system freshwater heat exchanger
Drive sail-drive
Saildrive seal 2016
Engine controls bowden cable Renewed (2018)
Gearbox mechanical
Bowthruster electric Retractable Vip Prop 9,5 HP (2017)
Propeller type folding
Propeller blades 3
Manual bilge pump Whale
Electric bilge pump yes
Electrical installation 230/12v
Generator wet exhaust PAGURO 4000
Running hours generator Last service/inspection (2018) at this moment not connected to the gasoline tank 1238
Batteries yes



| | |
|----------------------------|--|
| Start battery | 100 Ah (2019) |
| Service battery | 3x 210 Ah (2016) |
| Generator battery | 1x 72 Ah (2018) |
| Bowthruster battery | 1x AGM (2017) |
| Battery monitor | Philippi / Mastervolt Masterlink MICC |
| Battery charger | Mastervolt Mass 12/80-2 |
| Inverter | Mastervolt Mass Sine 12/2000 |
| Shorepower | with cable Furrion 15 Mtr 230V/32Ah (2019) |
| Extra info | SEPAR SWK switchable double diesel filter (2018). |
| Extra info | Ceiling lights LED renewed (2017) red floorlights |
| Extra info | Mechanical emergency switch service/engine battery, extra 12V alternator om engine |

NAVIGATION

| | |
|-------------------------------|---|
| Compass | Suunto |
| Electric compass | at auto pilot Raymarine |
| Depth sounder | Raymarine |
| Log | Raymarine |
| Windset | 4x Raymarine ST290 Analalog/digital |
| Fish finder | at C120 Chartplotter Raymarine DSM Fishfinder Modul |
| VHF | with 2e station at steering position including speaker Raymarine 240E including extra speaker |
| Autopilot | with wireless remote control (2019) Raymarine EVO 400 Sail (2019) |
| Rudder angle indicator | at Autopilot |
| Radar | RAYmarine Quantum 24C Wifi/cable (2017) |
| Plotter/GPS | at chart table Raymarine C120 |
| Radar/GPS/plotter | at steering postition Raymarine eS97 9" colour with Wifi/Radaroverlay & MARPA (2017) |
| PC connection | yes |
| Electronic chart(s) | update 2020 for Raymarine eS97 Navionics; XL9 UK/NL |
| AIS transponder | Raymarine AIS 650 (2017) |



Extra info

Extra high-mounted emergency battery, reversible for Raymarine VHF, VHF Service (2019)

EQUIPMENT

| | |
|----------------------------|---|
| Sprayhood | 1x light grey (2018), 1x blue (2017) 2x |
| Cockpit cover | 2020 |
| Bimini | with 30mm stainless steel tubing, used, not installed) |
| Sun awning | at the blue sprayhood |
| Cockpit table | not mounted |
| Bathing platform | with teak floor |
| Boarding ladder | stainless steel |
| Transom door | yes |
| Deck shower | yes |
| Anchor | Delta |
| Anchor chain | calibrated, stainless steel, with ss turnbuckle 60 mtr/10mm |
| Anchor 2 | Danforth 16 Kg |
| Windlass | electrical Quick (2016) with remote control (2020) |
| Deck wash | yes |
| Sea railing | stainless steel |
| Grab rail (superstructure) | |
| Railing side opening gates | 2x |
| Pushpit | with 2x teak seat |
| Pulpit | yes |
| Life raft | SEAGO offshore 6 persons |
| Last life raft survey | to be done in 2020 |
| Lifebuoy | yes |
| Fenders | 8x |
| Mooring lines | 8x |
| Radio-cd player | with remote control Alpine CDE-192R CD/USB |
| Cockpit speakers | 2x Bose |
| Speakers in salon | 4x |



| | |
|-----------------------------|--|
| Speakers in cabin | owner cabin 2x |
| Clock - barometer | yes |
| Fire extinguisher | 3x 2Kg Foam (2019) |
| Latest extinguisher survey | yes |
| Extinguisher in engine room | Expired |
| Auto extinguisher system | Seebo |
| Extra info | 3x Smoke alarm (2019), 2x CO2 alarm (2019) |
| Extra info | anchor winch has additional controls from the steering wheel |

RIGGING

| | |
|-------------------------|---|
| Rigging | fractional 9/10 |
| Standing rigging | Rod Checked and trimmed (2020) |
| Brand mast | Seldén With extra 9 mtr T-rail to hoist the try-sail |
| Material mast | aluminium |
| Spreaders | 3 sets |
| Keel stepped mast | yes |
| Mainsail | with Selden MDS mast slides Elvström Dacron cross-cut, full batten, unused (2017) |
| Mainsail cover | with Lazy Jacks Maindrop system |
| Battcars | mainsail slider system Selden MDS |
| Fully battened mainsail | Offshore Performance Tape Sail PTS CARBON Black, one side Taffeta, 3 reefs, like new Rolly Tasker (2017) |
| Cutterstay | removable with Richard spanner |
| Jib | Cutter stay jib, reefable, with hanks Beilken Hydranet II, Radial cut, used (2007) |
| Genoa III | 105% Offshore Performance Tape Sail PTS CARBON Black Tape, one side, vertical battens, like new Rolly Tasker (2017) |
| Genoa furler | under deck system, overhauled (2017) new reefing line (2020) Furlex 300 TDS |
| Genoa cover | Light grey (2018) |
| Gennaker | with slurf, needs to be cleaned, 1x 150m2 Beilken |
| Spinnaker | with trunk, needs to be cleaned 1x 170m2 Momentum |



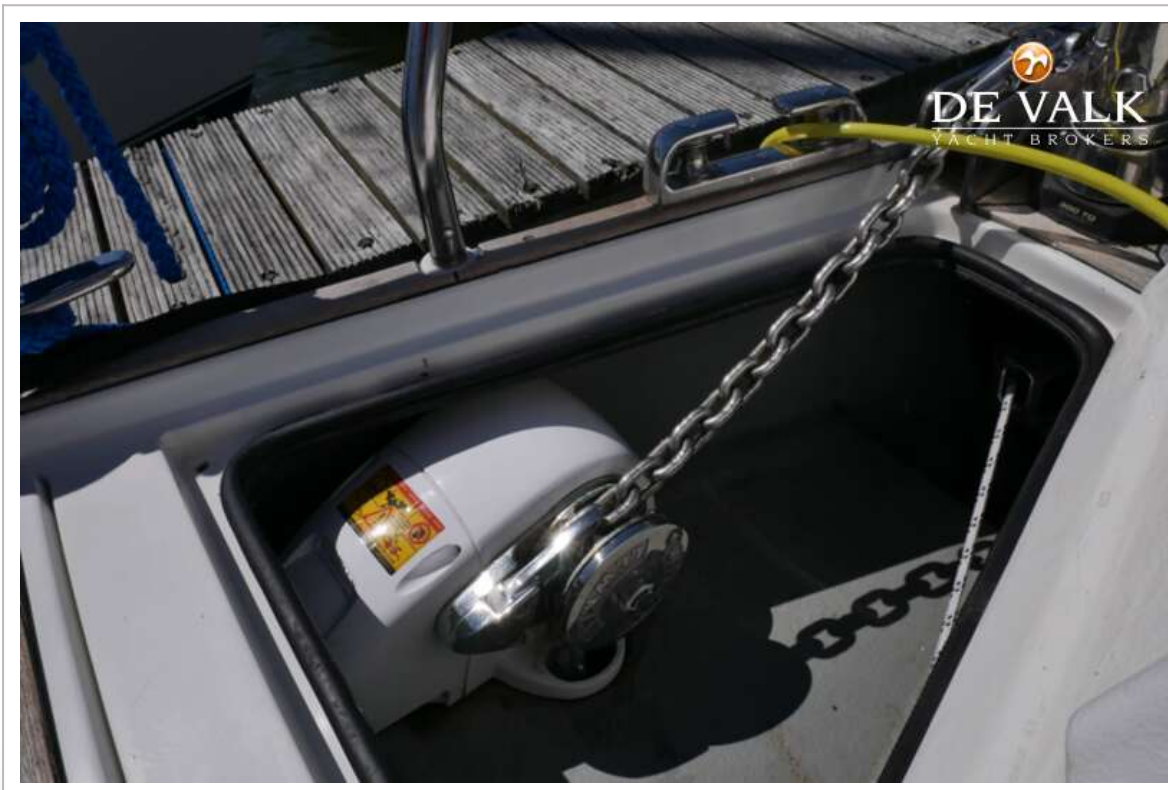
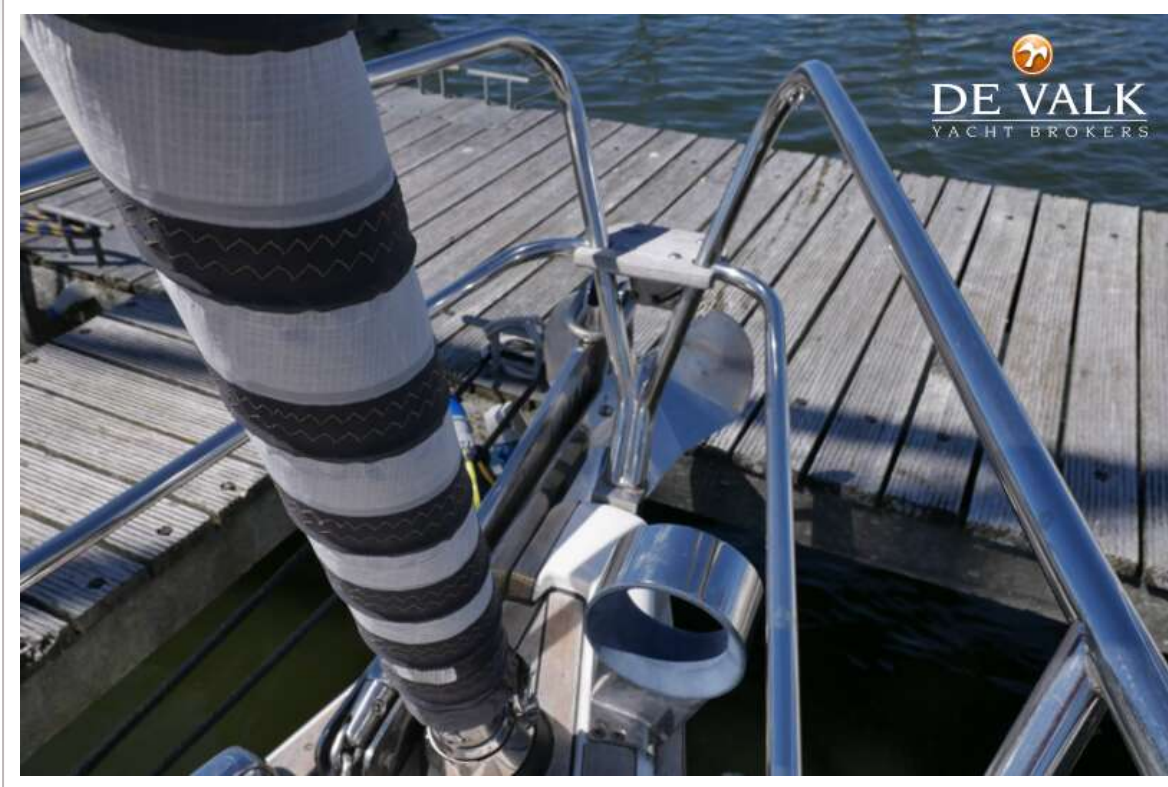
| | |
|--------------------------------|---|
| Trysail | little used Beilken, orange (2007) |
| Stormjib | little used Beilken, orange (2007) |
| Reefing System | slabreefing |
| Backstay adjuster | hydraulic Holmatro |
| Boomvang | gasspring Rodkicker (overhauled 2017) |
| Primary sheet winch | s.s. 2x Andersen 58ST FSI |
| Secondary sheet winch | s.s, electrical 2x Andersen 52ST FS |
| Multifunctional winches | halyard/sheet winches 2x Andersen 46ST FSI |
| Spi-pole | carbon White painted, with cover |
| Gennaker pole | carbon White painted, with cover |
| Isolated backstay | yes |
| Extra info | extra genoa cars Harken Black Magic deck gear |
| Extra info | 7 stair steps on the mast, extra stopper for genua halyard and dirk at the mast. running rigging Dyneema (2019) |



DEHLER 47 SQ

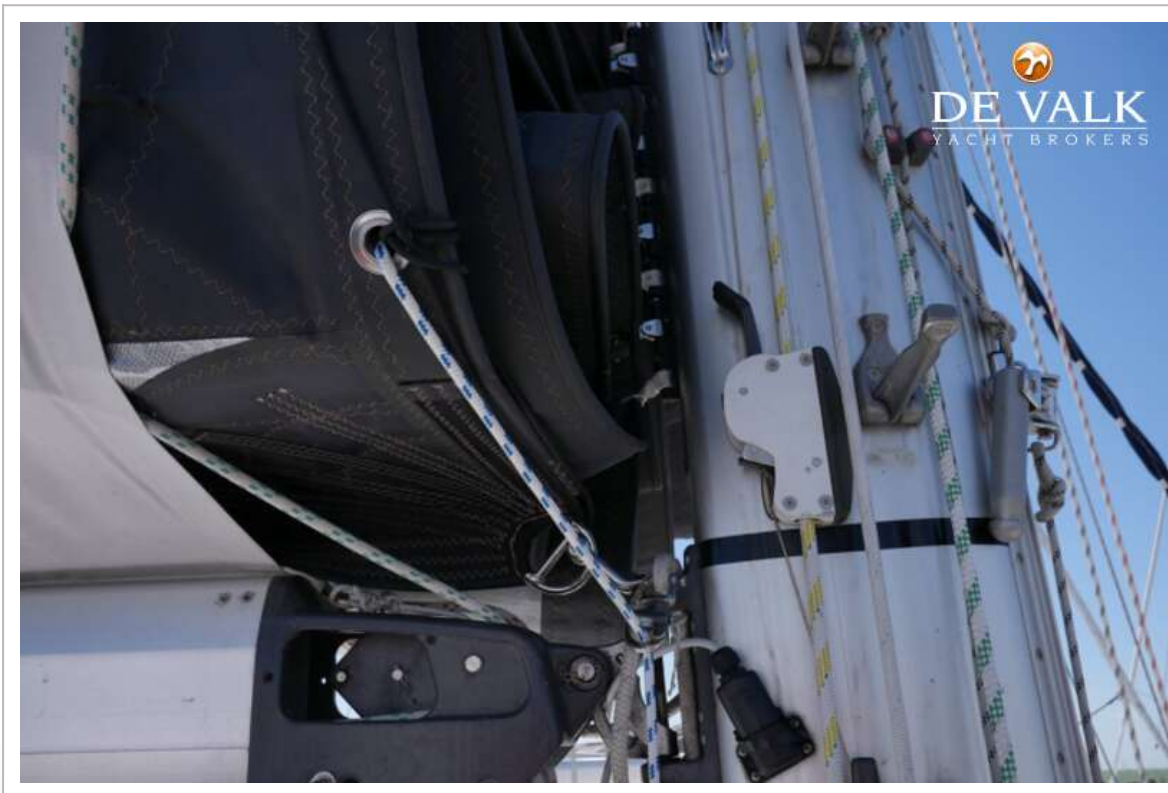
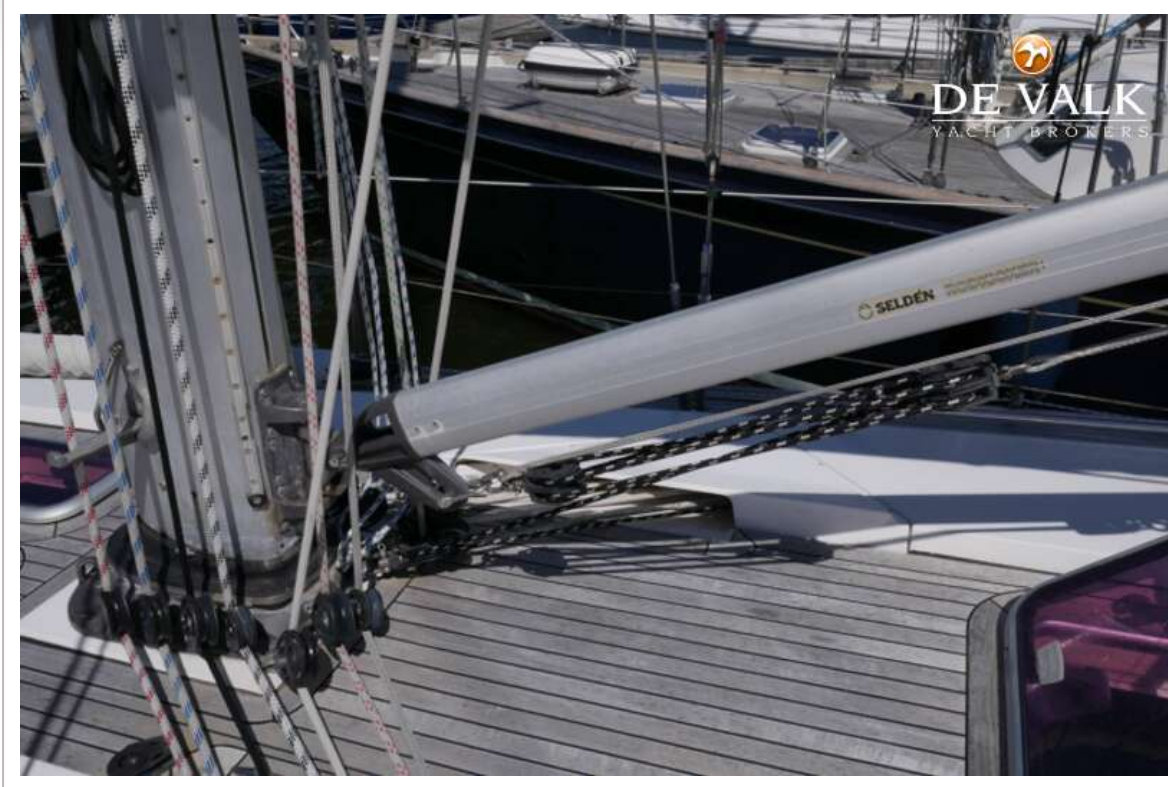


DEHLER 47 SQ

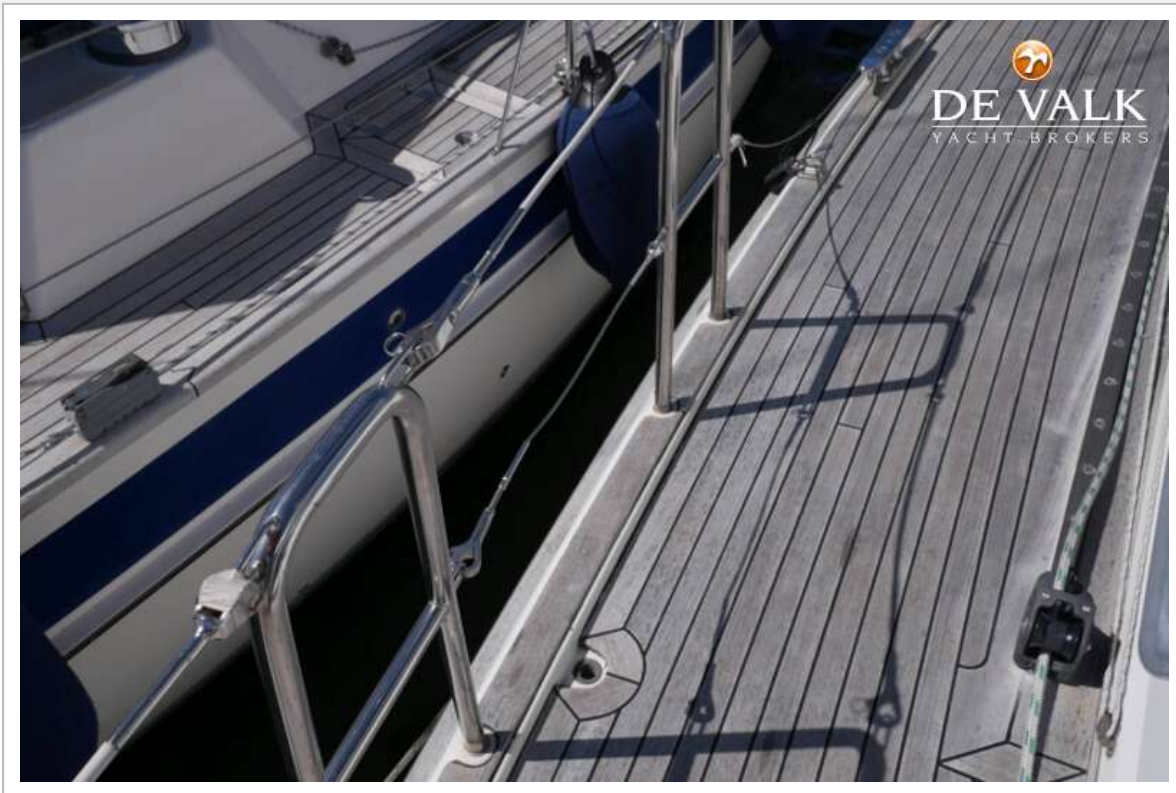


DEHLER 47 SQ





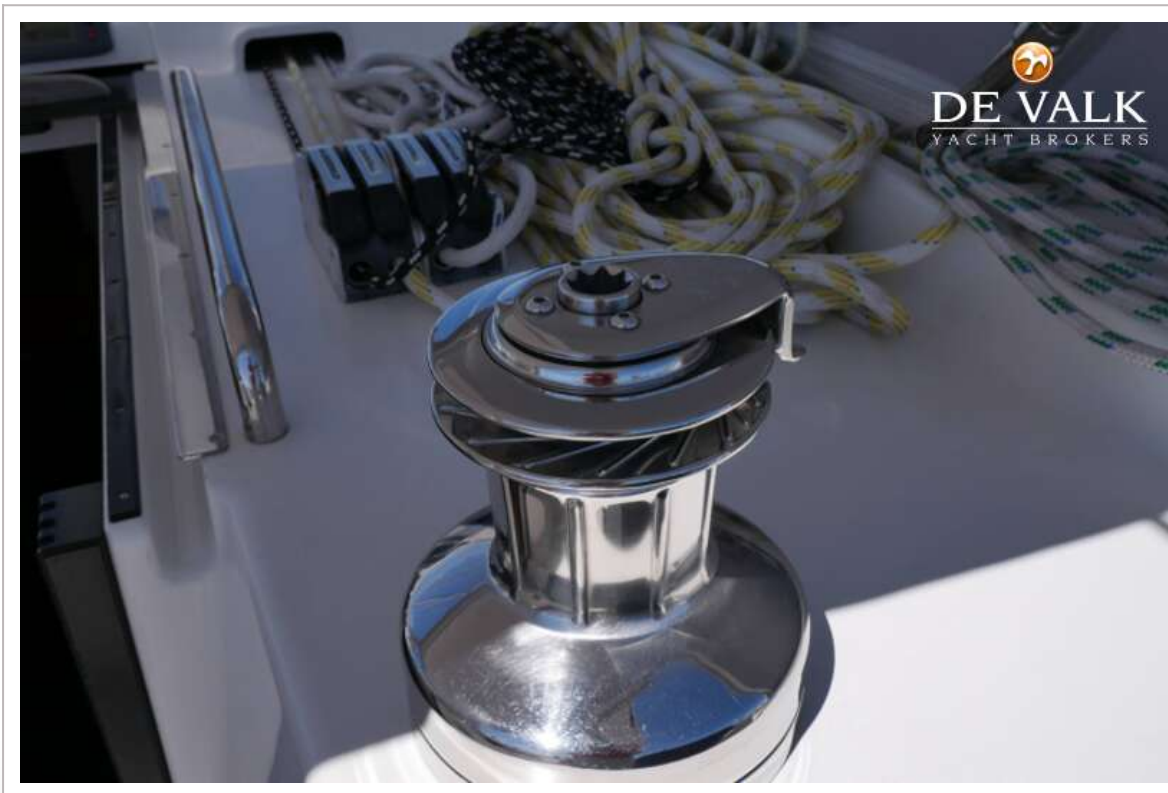
DEHLER 47 SQ



DEHLER 47 SQ



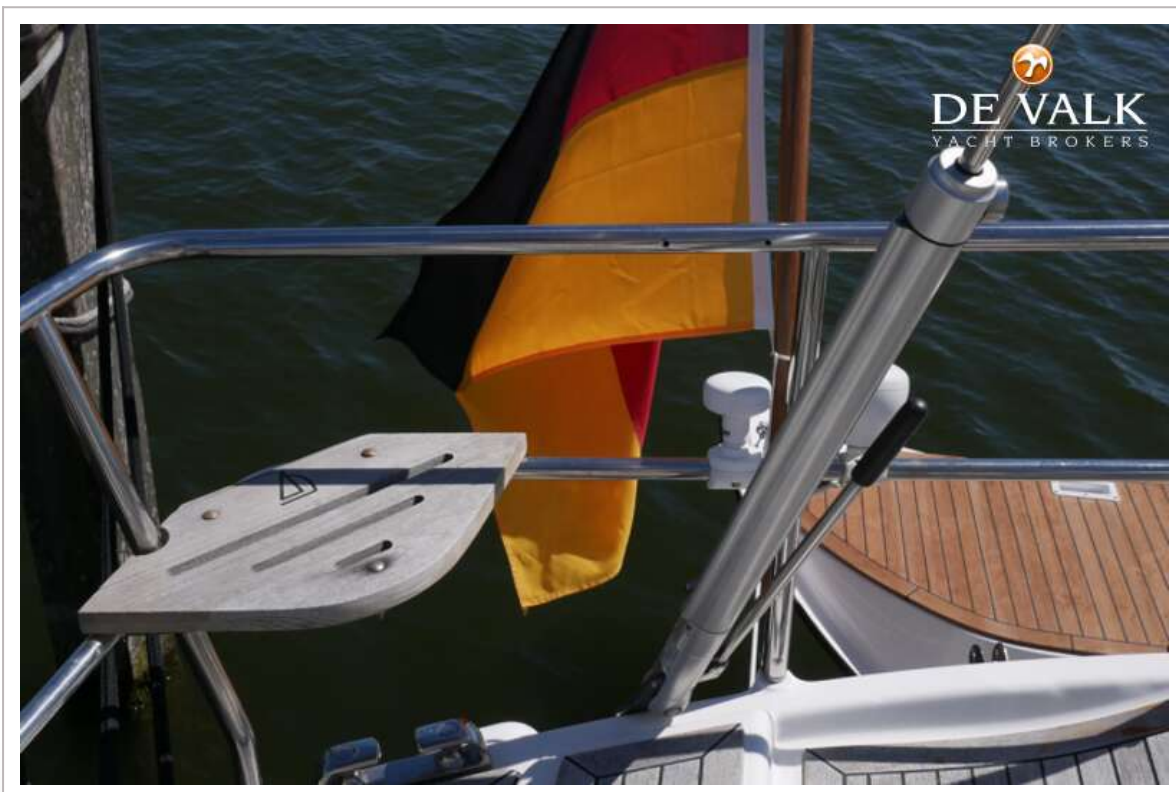
DEHLER 47 SQ



DEHLER 47 SQ



DEHLER 47 SQ



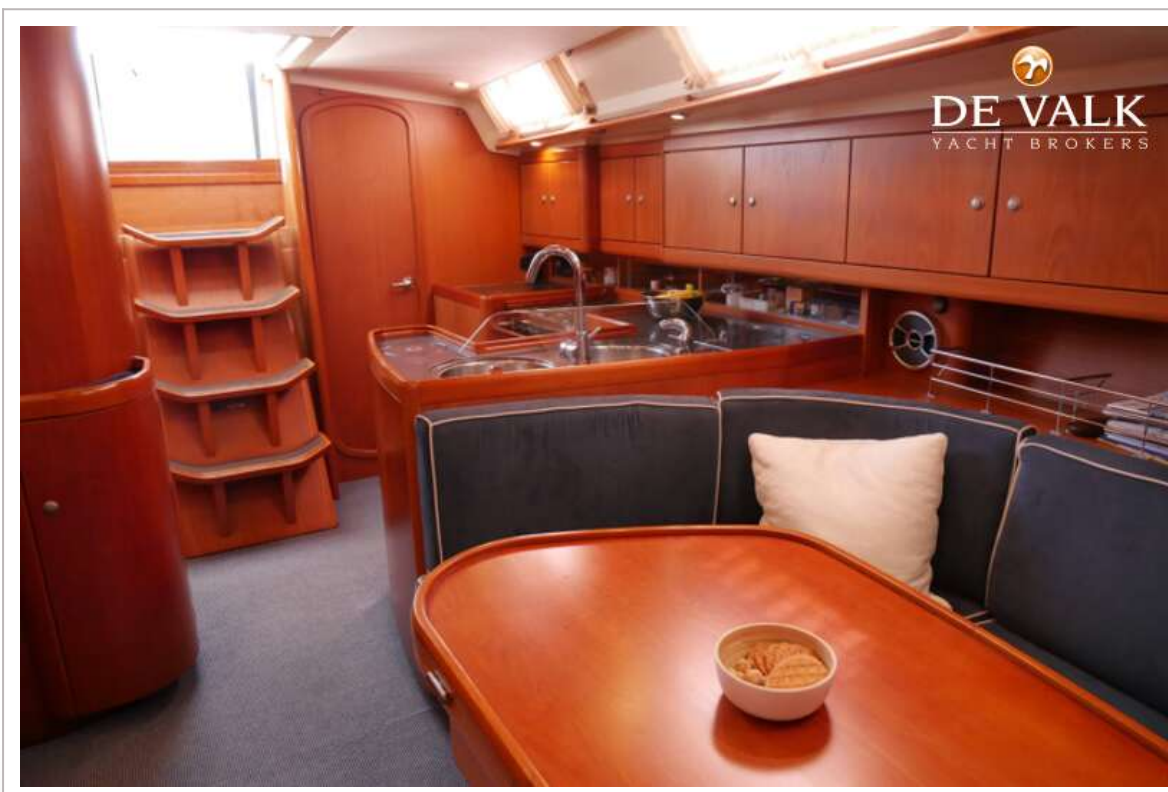
DEHLER 47 SQ



DEHLER 47 SQ



DEHLER 47 SQ



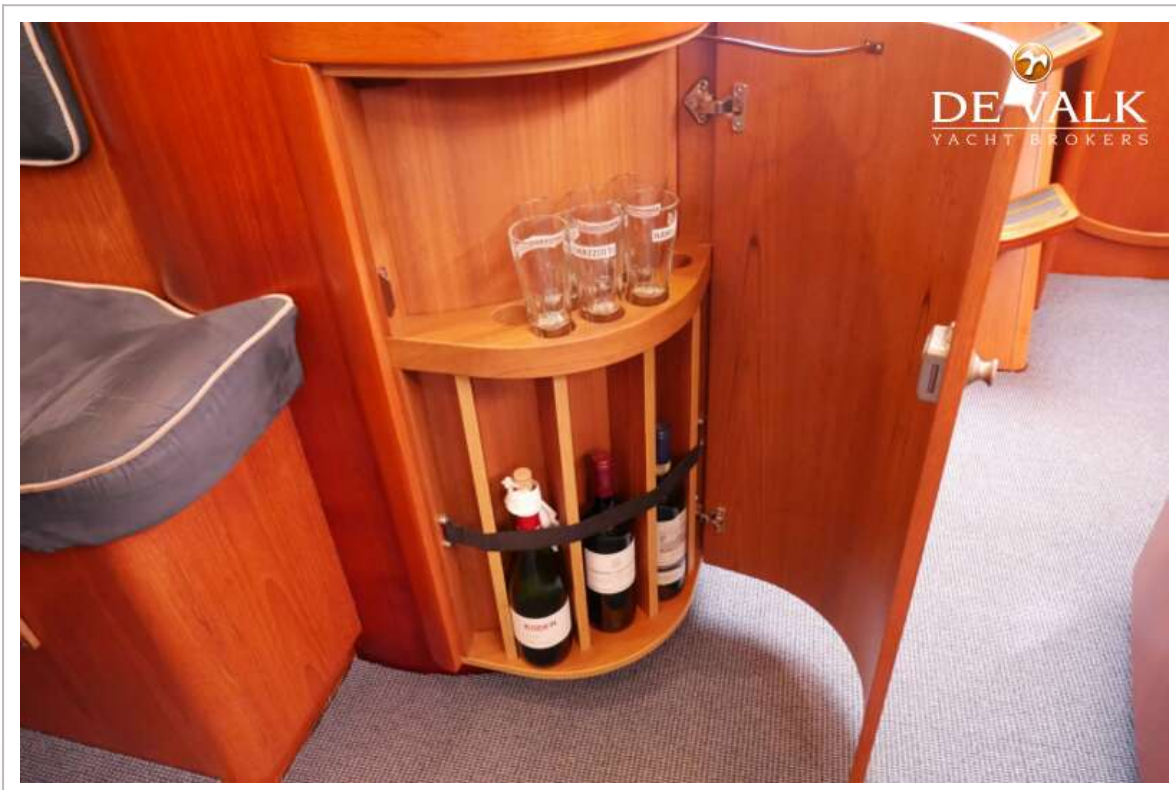
DEHLER 47 SQ



DEHLER 47 SQ



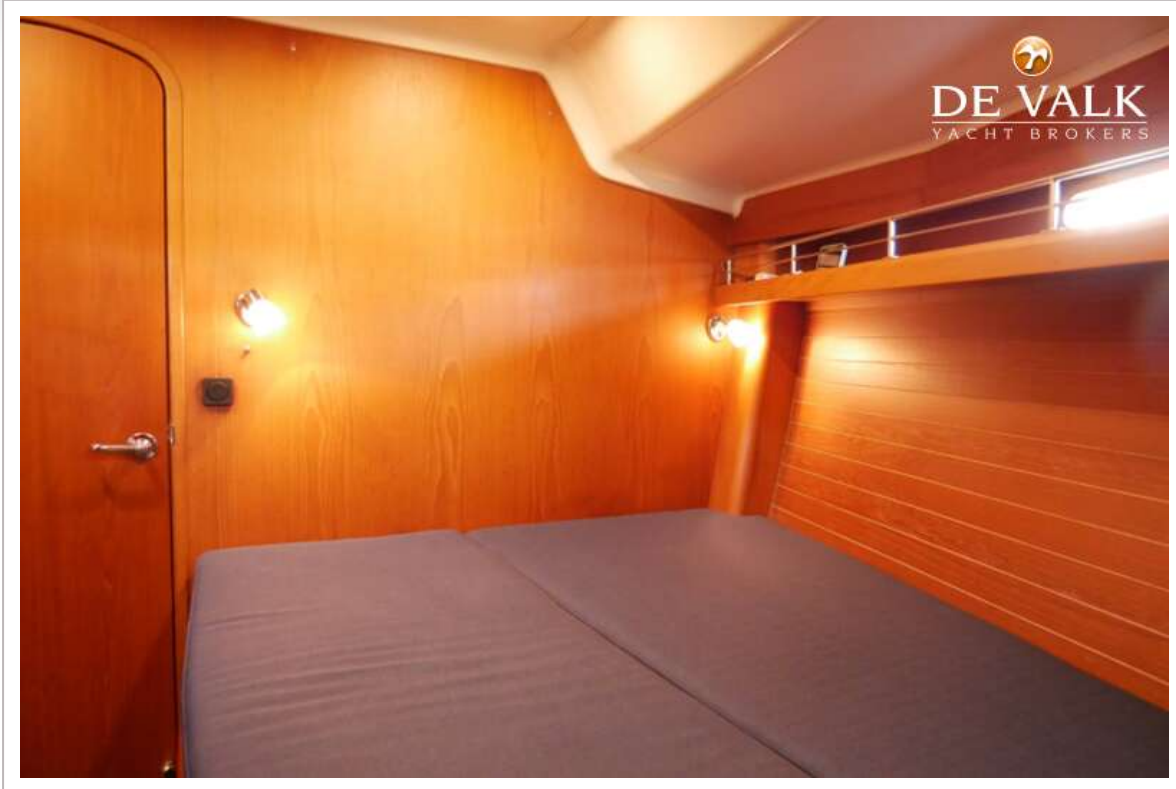
DEHLER 47 SQ



DEHLER 47 SQ



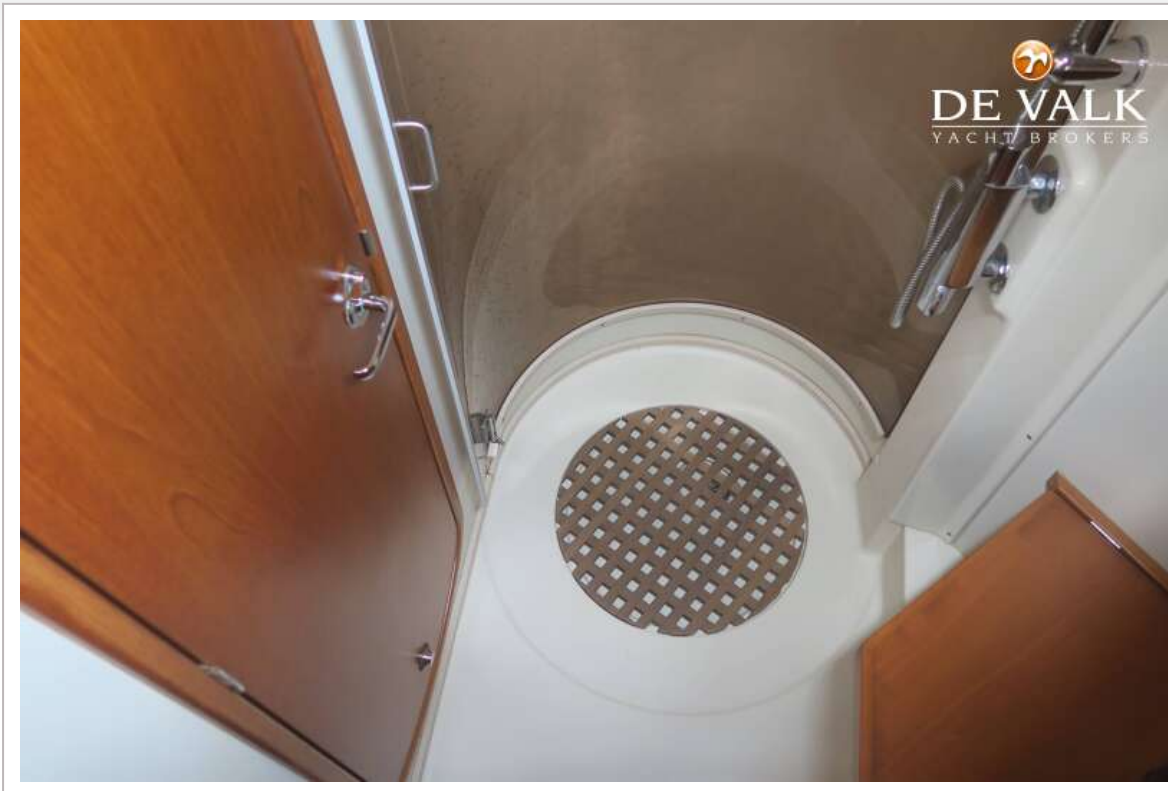
DEHLER 47 SQ



DEHLER 47 SQ



DEHLER 47 SQ



| | | |
|---|---------|----------|
| I | 19.80 m | (65') |
| J | 5.47 m | (18') |
| P | 19.10 m | (62' 8") |
| E | 8.25 m | (27' 1") |

DE VALK
YACHT BROKERS

The modern styling of the Dehler 47 has been specifically developed for Dehler by Jude/vrolijk & co, one of today's most innovative and successful yacht design teams. This beautiful performance cruiser is the result of a unique combination of traditional craftsmanship and the latest design and production techniques.

The Dehler 47 is a feast for the eyes and comes equipped with the most up-to-date sailing developments.

The new Dehler 47 delivers the highest standards of comfort and luxury both above and below decks, making her a comfortable sailing yacht on which every sailor will feel perfectly at home. The modern hull design and high standard of equipment make her a surprisingly fast yet extremely controllable yacht.

designed by jude/vrolijk & co



DEHLER 47 SQ

