



DE VALK
YACHT BROKERS



NORDIA 52



DE VALK
YACHT BROKERS

BROKERAGE | CHARTER | BERTHS | FINANCE | INSURANCE | YACHT MANAGEMENT

BROKER'S COMMENTS

Dutch craftsmanship in design and Yacht Construction. The world famous Nordia yard have been building yacht for many years and are renowned for their excellent quality in construction and detailed finishing. The Nordia 52 is well balanced and easy to handle through the extensive use of hydraulics for the rigging, bow thruster and winches. Lying Netherlands.

Marc Weijenberg

SPECIFICATIONS

Dimensions	15.90 x 4.62 x 1.80 (m)	Builder	Van Dam Nordia Aalsmeer
Built	1992	Cabins	3
Material	Aluminium	Berths	6
Engine(s)	1 x Perkins M80 diesel	Hp/Kw	80.00 (hp), 58.80 (kw)
Asking price	sold (VAT)	Lying	at sales office

CONTACT

Sales office	De Valk Sint Annaland B.V.	Telephone	+31 (0)166 601 000
Address	Koelhuisweg 4 4697 RM Sint Annaland NL	E-mail	sintannaland@devalk.nl

DISCLAIMER

These particulars are given in good faith as supplied but cannot be guaranteed.



GENERAL

Model	NORDIA 52
Type	sailing yacht Sail yacht
LOA (m)	15,90
LWL (m)	13,60
Beam (m)	4,62
Draft (m)	1,80
Air draft (m)	26,00
Headroom (m)	2,00
Year built	1992
Builder	Van Dam Nordia Aalsmeer
Country	The Netherlands
Designer	R. van Dam
Displacement (t)	19
Ballast (tonnes)	Lead in aluminum 8
Hull material	aluminium
Hull colour	Blue
Hull shape	Roundbilged
Keel type	Bulb keel Type Ballisto
Superstructure material	Aluminium
Deck material	Aluminium
Deck finish	Teak
Superstructure deck finish	Anti-slip paint
Cockpit deck finish	Teak
Dorades	yes
Window frame	Aluminum
Window material	Polycarbonate
Portholes	Aluminum
Insulation	Foam
Fuel tank (litre)	Aluminum 1000
Freshwater tank (litre)	Aluminum 1100



Greywater tank (litre)	Aluminum 300
Wheel steering	Cable steering Solimar
Emergency tiller	yes
More info on paintwork	Awlgrip 2 component
Extra info	Hull material aluminum Al.Mg.4,5Mn seawater resistant; 8, 6 and 5 mm, gauzes for deckhatches, extra porthole in galley to cockpit, extra grabrails installed on deck and cockpit and interior. The fixed doghouse (with headroom!) and cockpit are a very safe place to be when cruising. Ample sized cockpit for in-marina leisure.

ACCOMMODATION

Cabins	3
Berths	6
Interior	Rosewood
Floor	Teak and Holly
Saloon	with U-shaped dinette/settee
Headroom saloon (m)	2,00
Heating	Diesel ducted hot air Eberspacher D7L
Chart table	yes
Galley	in walkway to aft cabin
Sink	Stainless steel
Cooker	Calor gas Force 10
Oven	yes
Extractor	yes
Gas alarm	yes
Fridge	24v
Freezer	24v
Hot water system	220v + engine
Water pressure system	Electrical
Manual and/or foot pump	yes
Crockery	yes



Owners cabin	Double bed
Bed length (m)	2
Wardrobe	hanging and drawers
Bathroom	en suite
Toilet	En suite
Toilet system	Manual Rheinstrom
Wash basin	in the bathroom
Shower	En suite
Guest cabin 1	Bunk bed 2 x
Wardrobe	hanging and drawers
Bathroom	En suite
Toilet	En suite
Toilet system	Manual Jabsco
Wash basin	in the bathroom
Shower	yes
Washing machine	Eumenia

MACHINERY

No of engines	1
Make	Perkins
Type	M80
HP	80,00
kW	58,80
Fuel	diesel
Year installed	1992
Maximum speed (kn)	8
Cruising speed (kn)	7
Consumption (l/hr)	4
Engine hours	2873
Engine cooling system	Freshwater heat exchanger
Drive	shaft



Engine controls	Bowden cable
Gearbox	Mechanical Paragon
Bowthruster	Hydraulic 12 hp / 9kW
Exhaust	Watercooled
Propeller type	Feathering Maxprop
Propeller blades	3
Propeller shaft material	Stainless steel
Shaft lubrication	Water
Manual bilge pump	1 x
Electric bilge pump	with alarm 2 x
Electrical installation	12/24/220v
Generator	wet exhaust Onan 6,5kW
Running hours generator	800
Start battery	2 x 55amp
Service battery	4 x 220amp
Generator battery	1 x 55amp
Battery charger/inverter	Mastervolt 24v/35amp/1800watt
Shorepower	yes
Insulation transformer	yes
Extra info	2 x 24v/90 watt solarpanels, gearbox overhauled, enginemounts, hoses engine renewed, overhaul startermotor and alternator all 2011/12

NAVIGATION

Compass	+ with handbearing compass Sestrel
Electric compass	Robertson
Depth sounder	Brookes & Gatehouse
Log	Brookes & Gatehouse
Windset	Brookes & Gatehouse
Repeater	Brookes & Gatehouse
VHF	Sailor RT2048
VHF handheld	Icom



Autopilot	Roberson AP200DL
Rudder angle indicator	Via autopilot
Radar	Furuno 1830 18nm
GPS	Furuno
Plotter	with 10 Navionics charts Geonav4
Navtex	weatherfax & Navtex Furuno 208
PC connection	yes
Radio receiver	Sailor RE2122 SSB
Transmitter	Sailor RE2122 SSB
Loudhailer	speaker to be connected
Extra info	new antenna for weatherfax to be connected

EQUIPMENT

Fixed windscreen	fixed Doghouse
Cockpit cover	yes
Sun awning	yes
Winter cover	suncover in three parts
Cockpit cushions	yes
Cockpit table	yes
Bathing platform	yes
Boarding ladder	on gangway
Gangway	hydraulic Gondola
Deck shower	hot & cold
Anchor	CQR Plough 75 lbs
Anchor chain	85 mtr 10mm
Anchor 2	CQR Plough 46 lbs
Anchor chain	80 mtr line 18mm
Other ground tackle	stern anchor with line on drum
Windlass	Lofrans Tigress 1000watt/24v
Deck wash	fresh & salt water
Dinghy	inflatable New 2016



Outboard	Mercury 5 hp (2000)
Davits	Stainless steel
Davits controls	Manual Prasolux
Sea railing	Stainless steel
Grab rail (superstructure)	Stainless steel
Railing side opening gates	yes
Pushpit	yes
Pulpit	yes
Lifebuoy	2 x
Danbuoy	yes
Wiper	yes
Horn	yes
Radar reflector	yes
Fenders	yes
Mooring lines	yes
TV	Samsung
Fire extinguisher	various
Extinguisher in engine room	automatic 2013
Extra info	A comprehensive equipment package including extra cruising equipment, spares, tools, pilots, charts etc, is included.

RIGGING

Rigging	Cutter
Brand mast	Proctor
Material mast	Aluminium coated
Mainsail	stoway 85m2 UK Sails 2011
Stoway mast	hydraulic
Genoa	with uv strip 85m2 Quantum Sails 2003
Genoa furler	hydraulic Reckmann
A-symetric spi	150m2 with rocon MPS/Booster 1992
Staysail	with uv strip 55m2 Quantum Sails 2003



Staysail furler	manual Profurl 2003
Stormjib	orange
Backstay adjuster	Hydraulic Navtec
Boomvang	Mechanical Proctor
Primary sheet winch	2 x 56ST hydraulic Lewmar
Secondary sheet winch	2 x 30 for mainsheet Lemar
Halyard winches	2 x 43ST Lewmar
Spinnaker winch	2 x 46ST Lewmar
Spi-pole	Aluminum Proctor
Isolated backstay	yes
Extra info	Lewmar Commander 4 hydraulic powerpack, hydraulic furlers serviced/overhauled with new motors in 2010/2011.

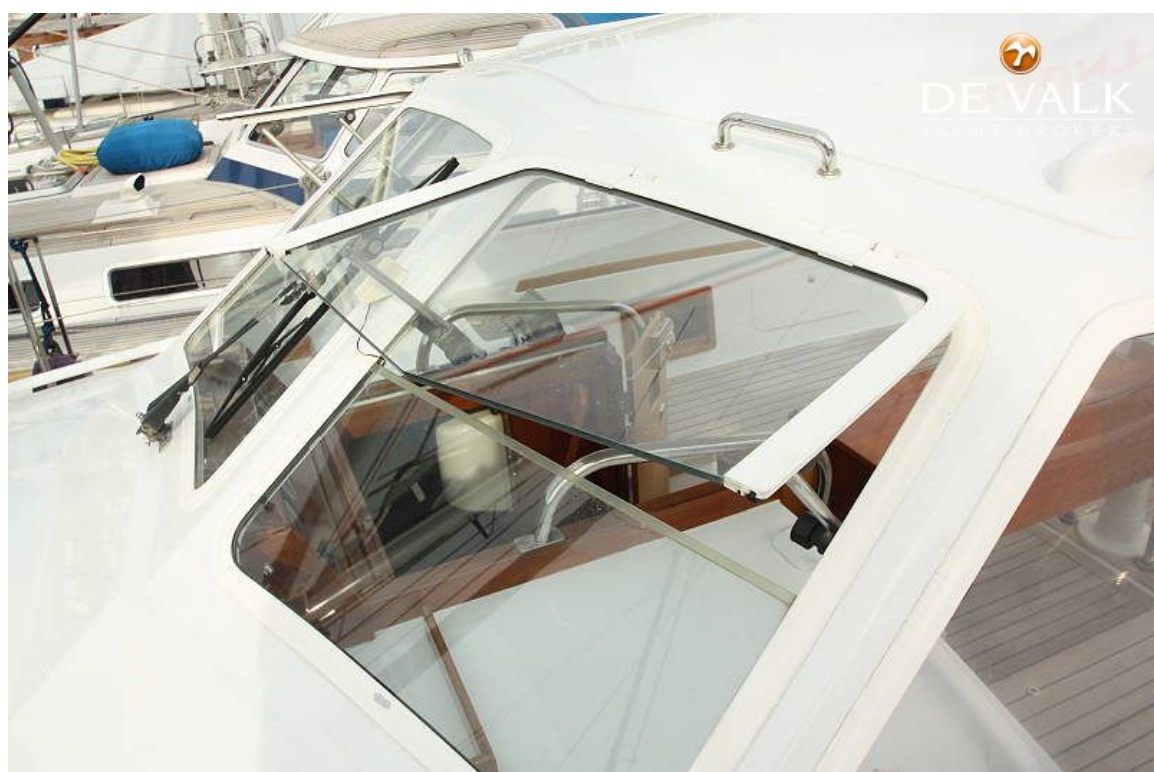




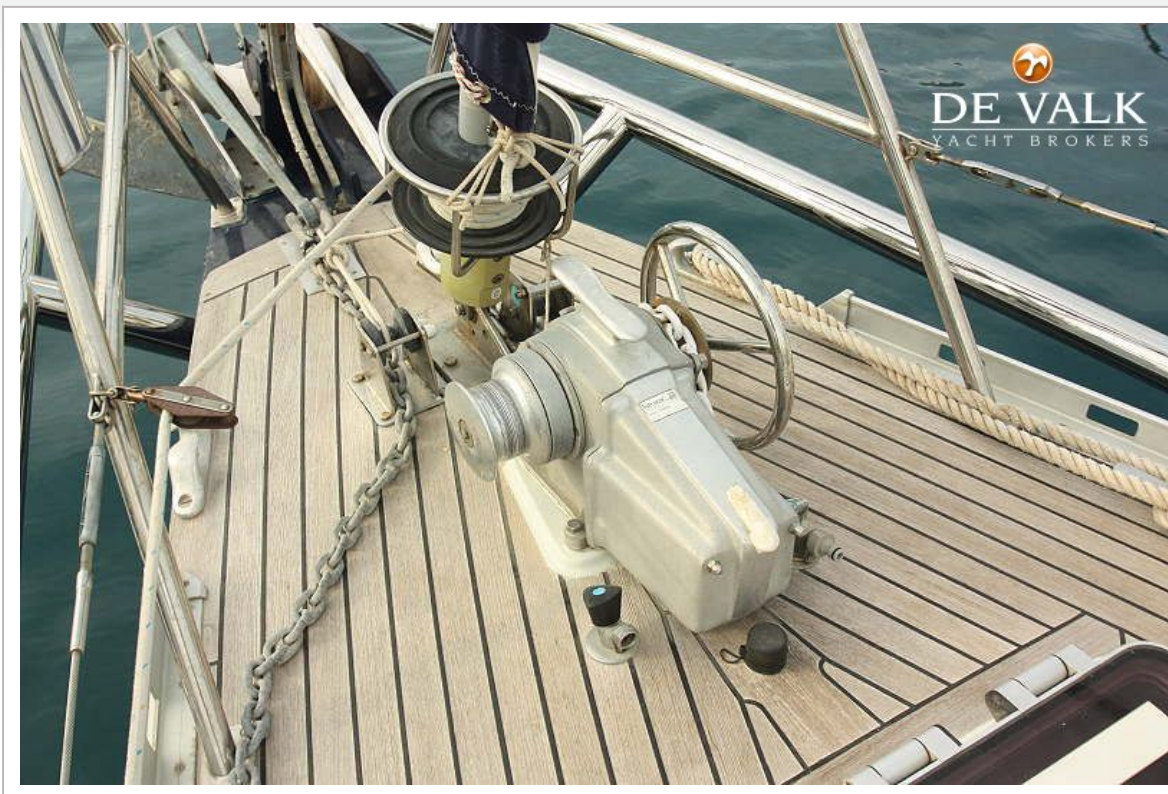
NORDIA 52



NORDIA 52



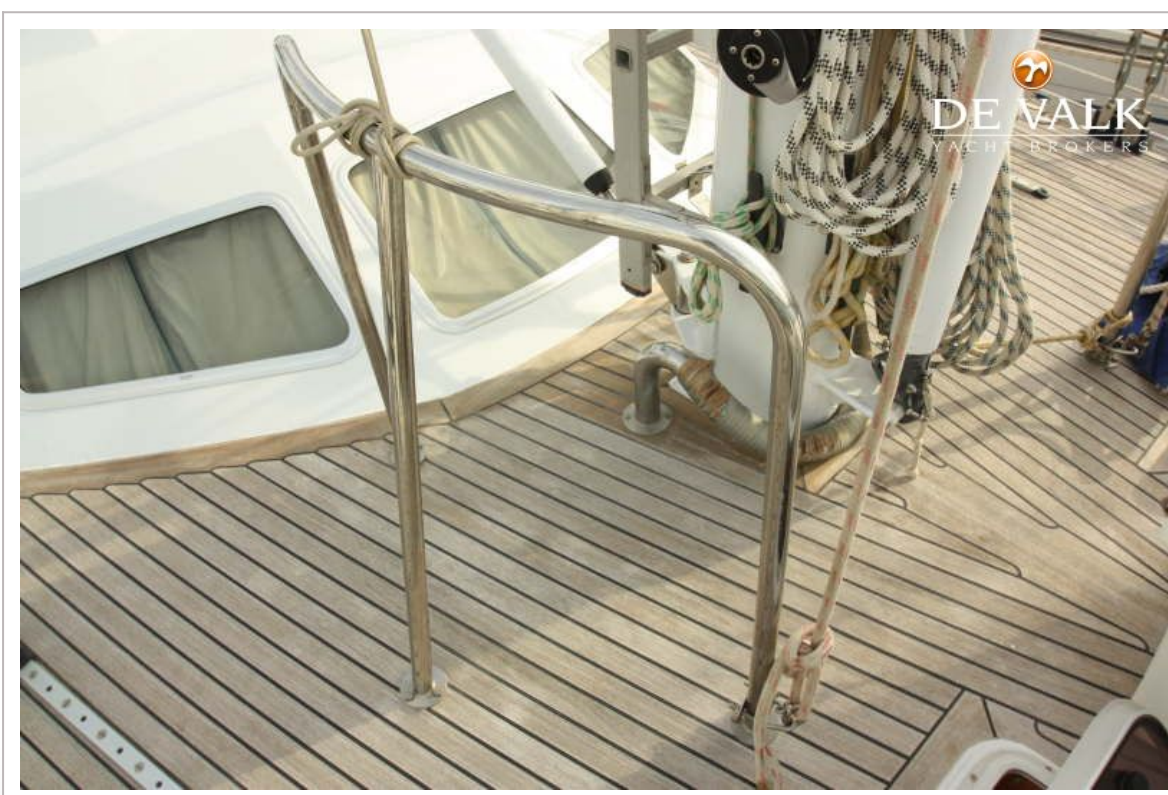
NORDIA 52



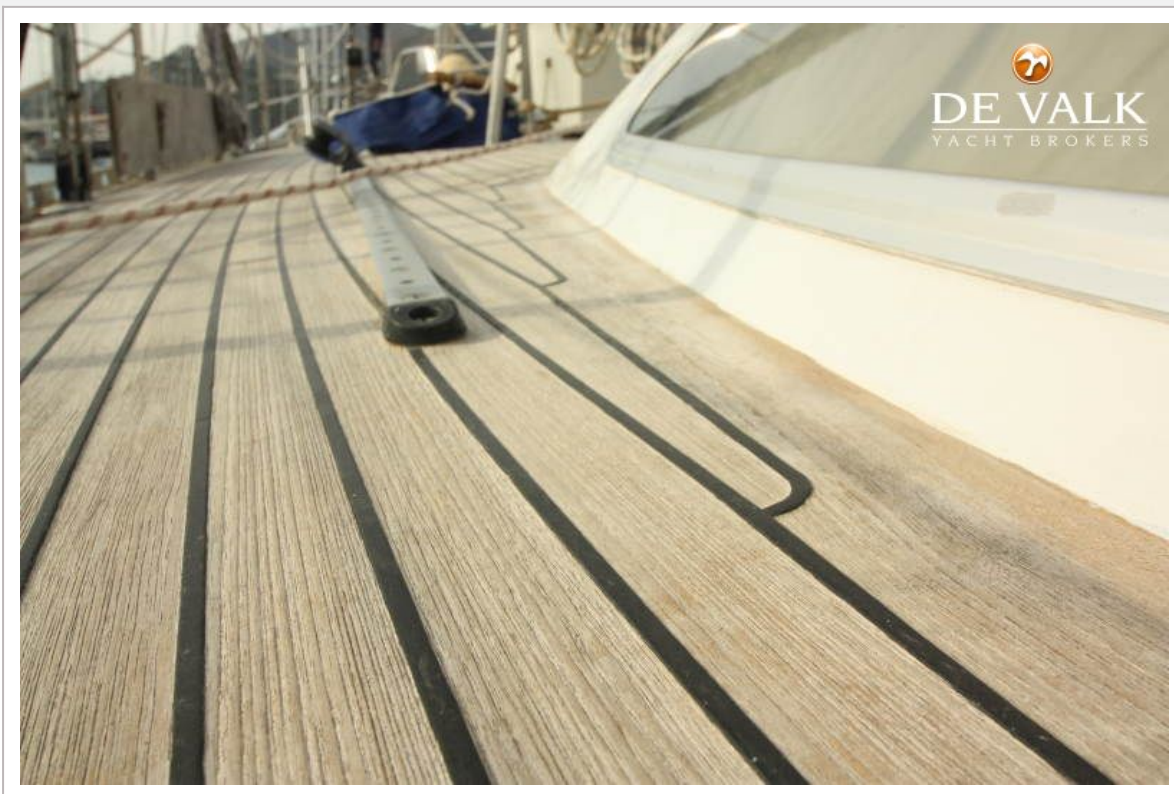
NORDIA 52







NORDIA 52



NORDIA 52



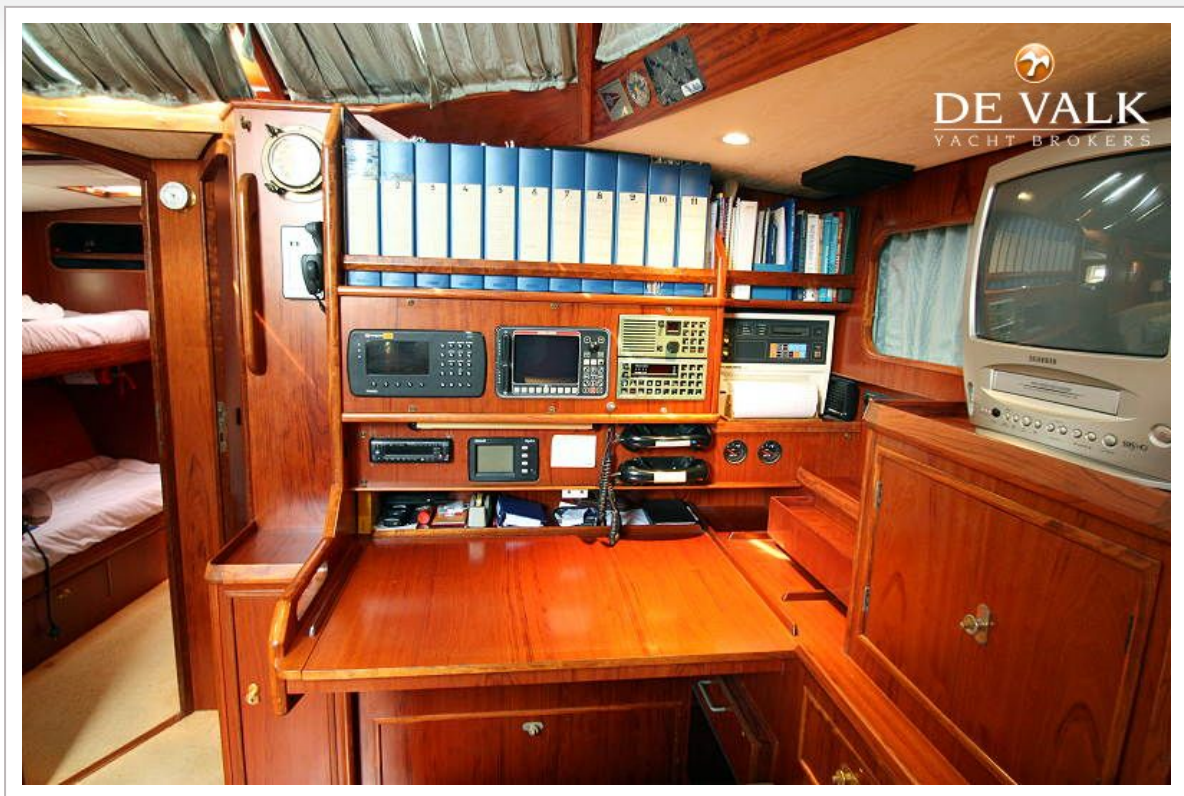
NORDIA 52



NORDIA 52



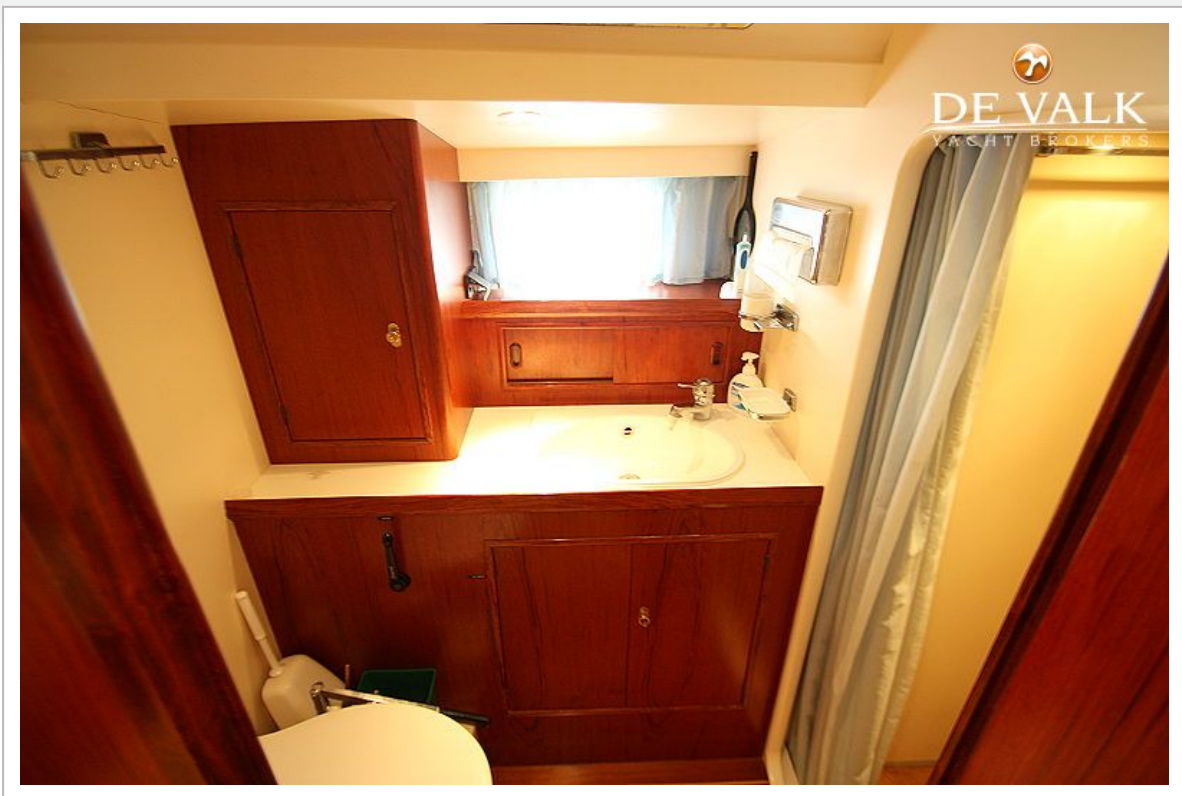
NORDIA 52



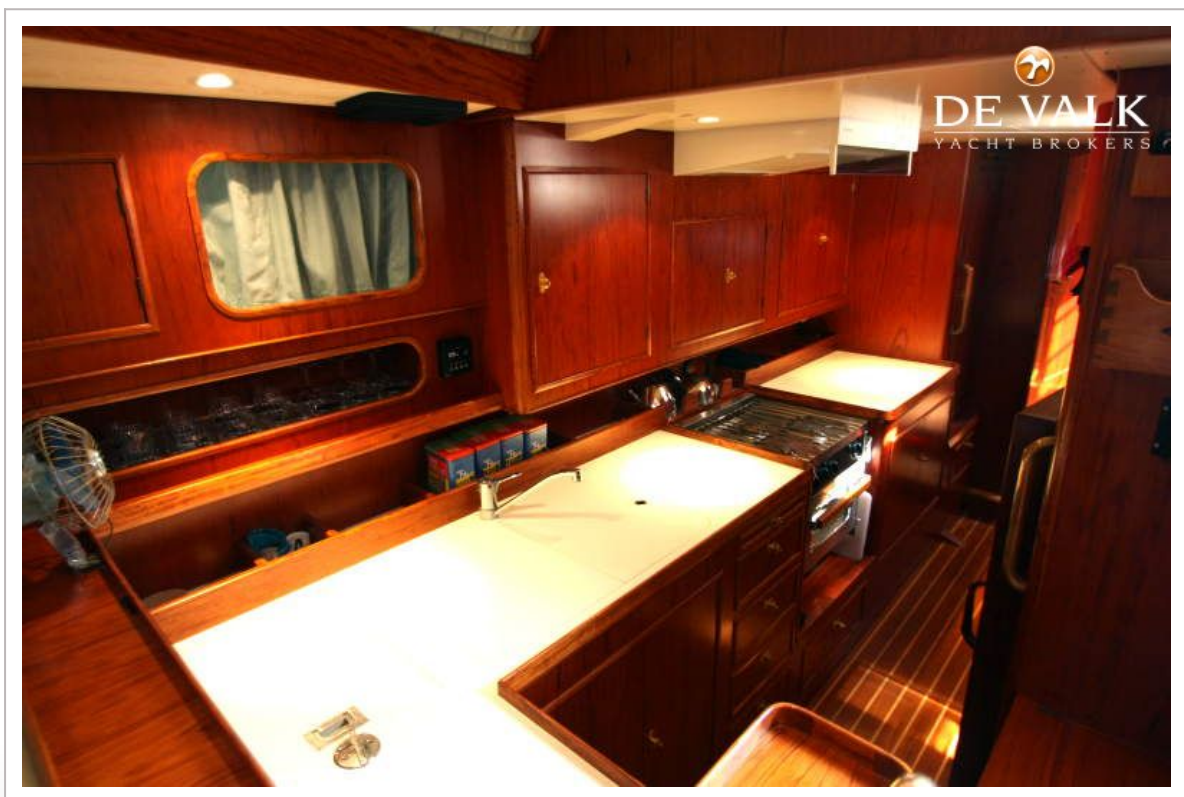
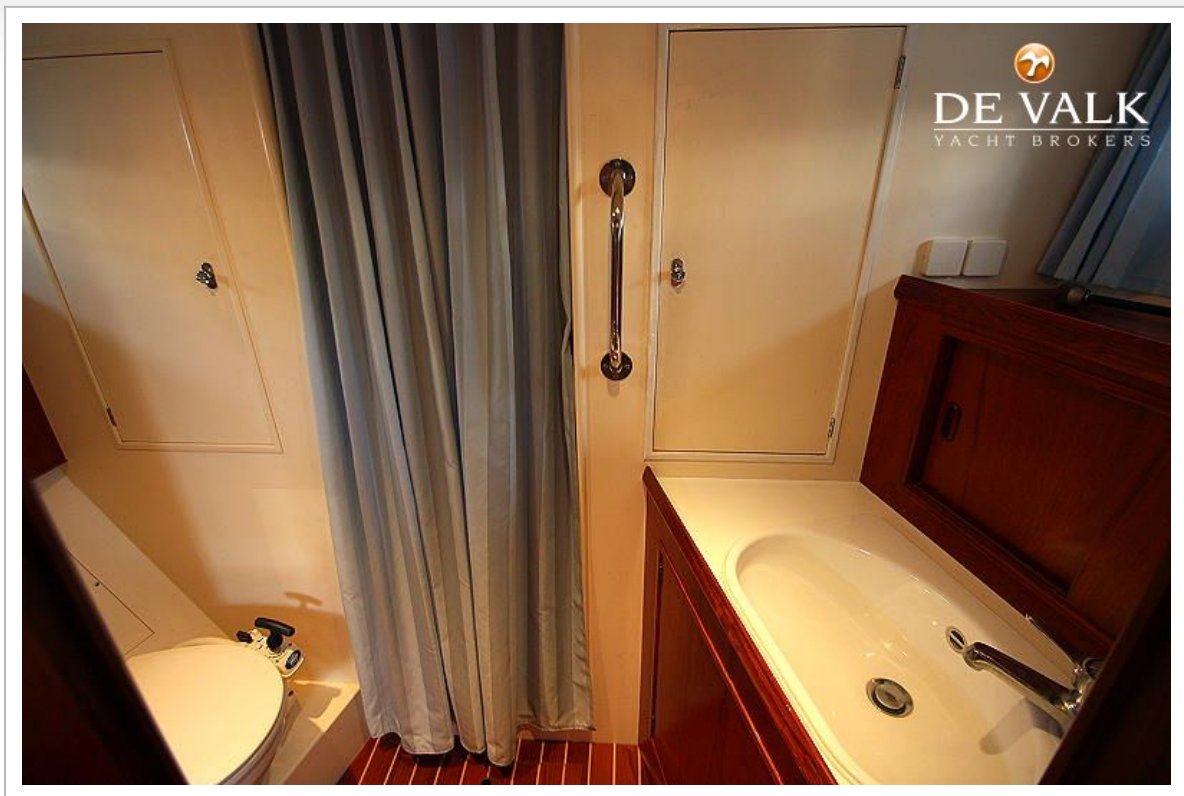
NORDIA 52



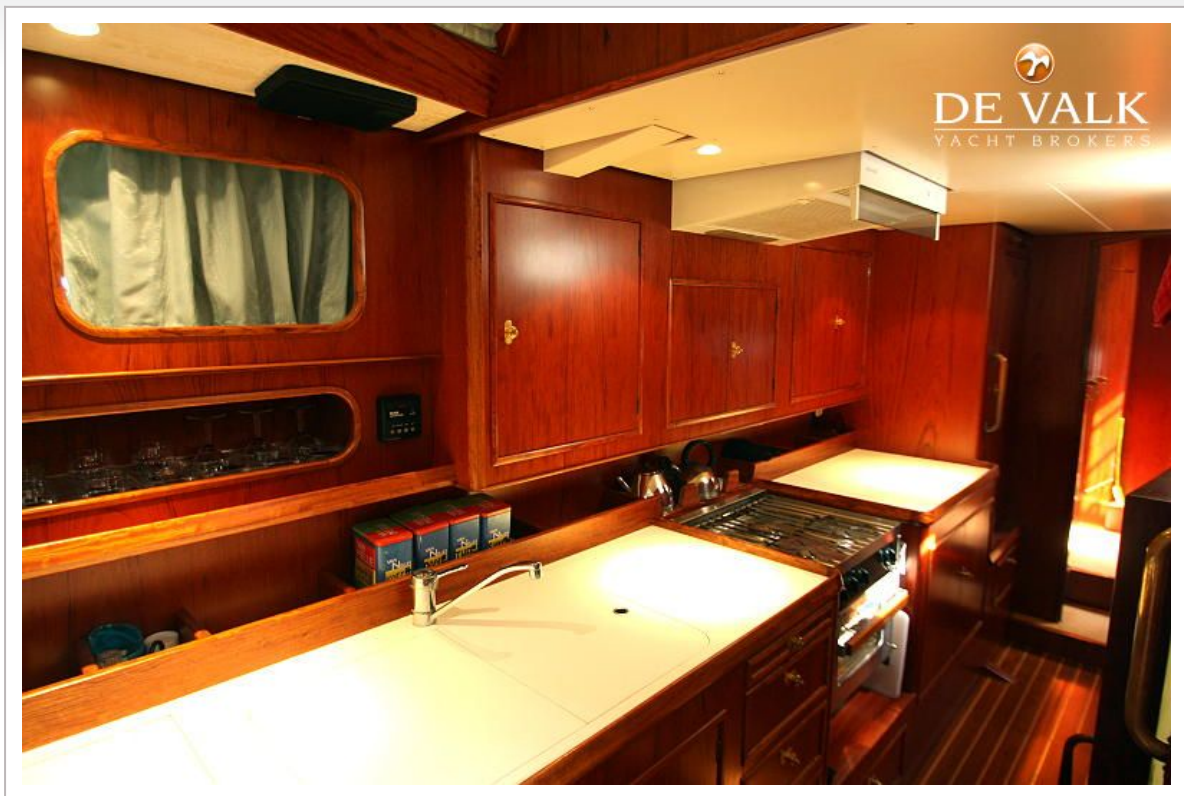




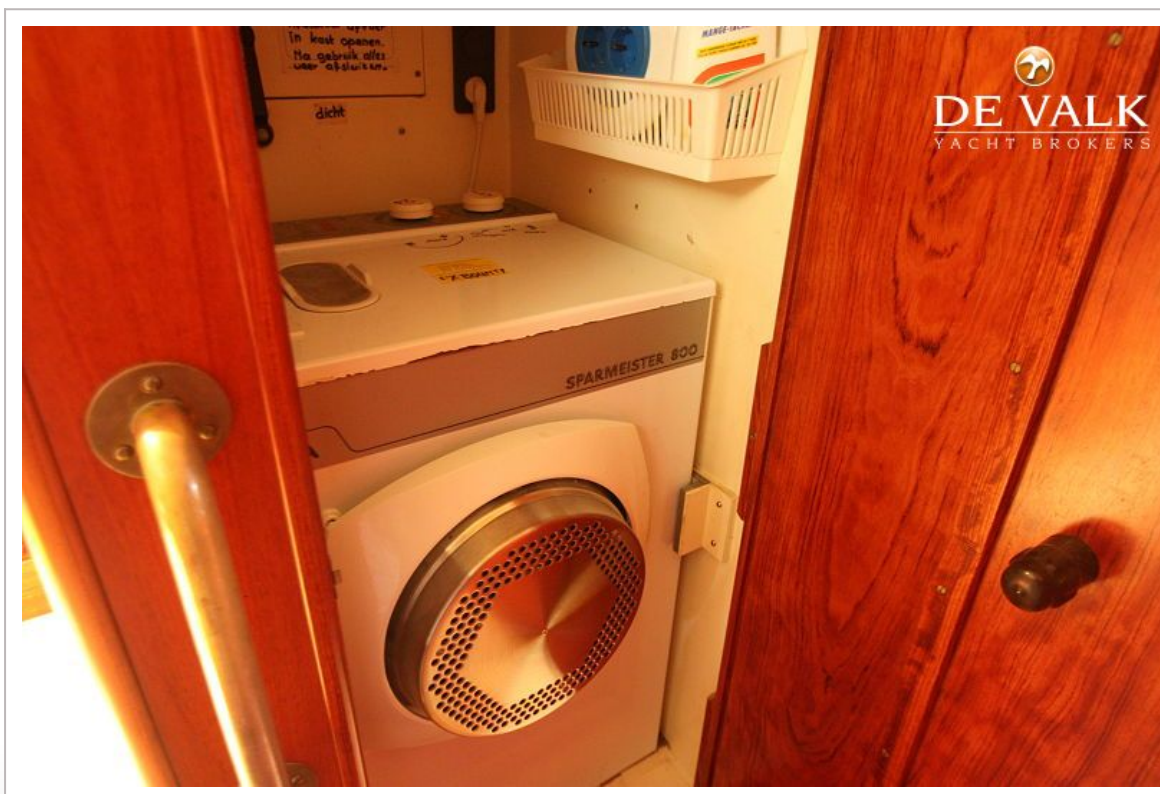
NORDIA 52



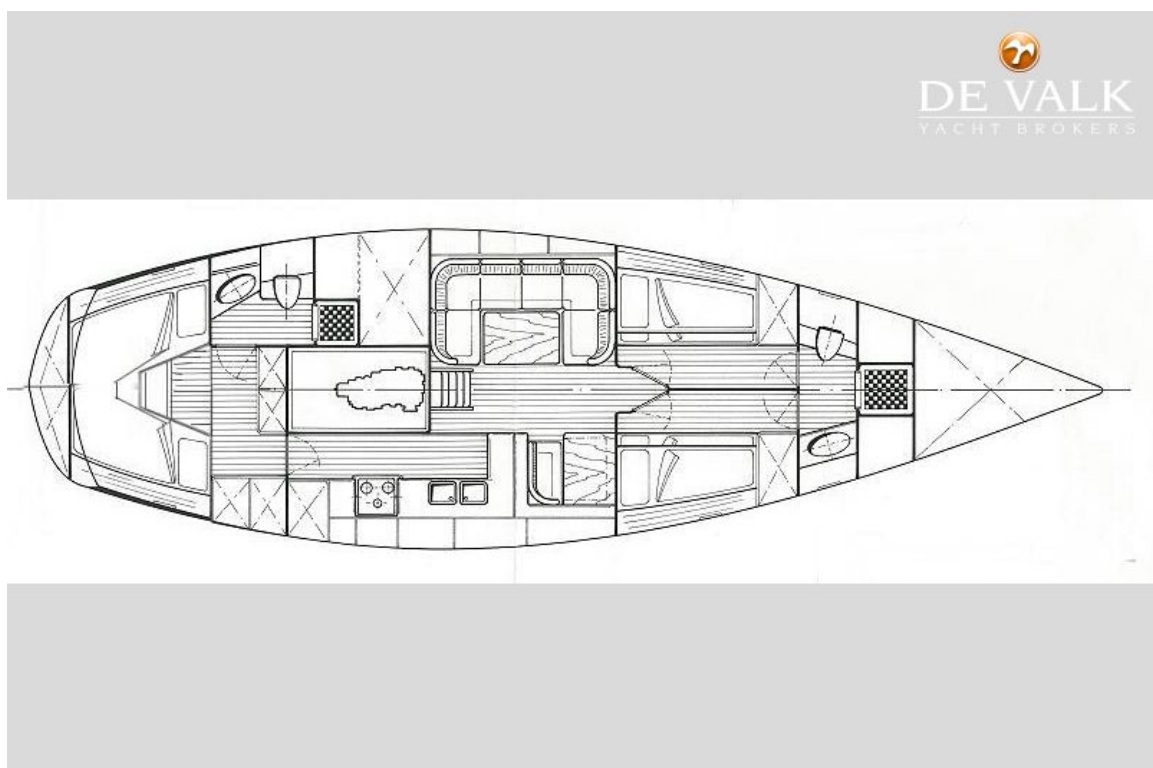
NORDIA 52



NORDIA 52



NORDIA 52



NORDIA 52



