



VALUE SUPERIOR 49



DE VALK
YACHT BROKERS

BROKER'S COMMENTS

Well built and spacious motor yacht very suitable for longer stays onboard. Excellent owner cabin with good bathroom. Well insulated and insulated double glaze windows. The aft deck from the pilothouse has an easy access through four opening doors and a sliding roof for ample ventilation.

Marc Weijenberg

SPECIFICATIONS

Dimensions	14.80 x 4.60 x 1.25 (m)	Builder	Jachtwerf Oude Maasje John Rekkers
Built	1995	Cabins	3
Material	Steel	Berths	8
Engine(s)	1 x Ford Genesis 2720 diesel	Hp/Kw	150.00 (hp), 110.25 (kw)
Asking price	sold (VAT)	Lying	at sales office

CONTACT

Sales office	De Valk Sint Annaland B.V.	Telephone	+31 (0)166 601 000
Address	Koelhuisweg 4 4697 RM Sint Annaland NL	E-mail	sintannaland@devalk.nl

DISCLAIMER

These particulars are given in good faith as supplied but cannot be guaranteed.



GENERAL

Model	VALUE SUPERIOR 49
Type	motor yacht
LOA (m)	14,80
Beam (m)	4,60
Draft (m)	1,25
Air draft (m)	3,90
Headroom (m)	2,00
Year built	1995
Builder	Jachtwerf Oude Maasje John Rekkers
Country	The Netherlands
Designer	John Rekkers
Displacement (t)	25
Hull material	steel
Hull colour	white
Hull thickness (mm)	5-4
Hull shape	hard chine
Superstructure material	steel
Rubbing strake	stainless steel
Deck material	steel
Deck finish	teak 12mm
Cockpit deck finish	teak
Antifouling (year)	2013
Window frame	aluminum
Window material	double glazing
Portholes	aluminum
Insulation	rockwool
Fuel tank (litre)	steel 2 x 500
Freshwater tank (litre)	stainless steel 2 x 350 / 1 x 500
Blackwater tank (litre)	steel 175
Blackwater tank extraction	pump



Wheel steering

hydraulic Vetus

Extra info

Antenna mast can be lowered (electrical) Rafa windows Gebo portholes Front windows in pilothouse have blowers

ACCOMMODATION

Cabins

3

Berths

8

Interior

teak

Floor

carpet

Pilot house

with opening doors to aftdeck

Deck saloon

with panoramic view

Headroom saloon (m)

1,91 - 2,00

Heating

central heating

Aft Cabin

ownerscabin aft

Dinette to convert into berth

opposite of galley

Galley

U-shaped

Sink

stainless steel

Cooker

electric Siemens inductie 2013

Extractor

yes

Microwave

DeLonghi Combi-oven

Fridge

with freezer compartment 220v

Hot water system

220V + engine Boiler

Water pressure system

electrical

Crockery

yes

Owners cabin

double bed

Bed length (m)

2,00 x 1,50

Wardrobe

hanging/drawers/shelves

Bathroom

Aft/achter/hinten

Toilet

shared

Toilet system

electric

Wash basin

in the bathroom



Shower	shared
Bath tub	shared +whirlpool function
Guest cabin 1	double bed Aft/achter/hinten
Wardrobe	hanging
Guest cabin 2	double bed Forward/voor/vorne
Wardrobe	hanging
Bathroom	Front/voor/vorne
Toilet	shared
Toilet system	electric
Wash basin	at the toilet
Shower	shared
Extra info	Lots of stowage space Spacious bathroom aft with bath and seperate shower Forward bathroom has a seperate shower Galley inventory

MACHINERY

No of engines	1
Make	Ford Genesis
Type	2720
HP	150,00
kW	110,25
Fuel	diesel
Year installed	1995
Maximum speed (kn)	7,5
Consumption (l/hr)	8
Engine hours	380 after overhaul
Engine cooling system	freshwater heat exchanger
Drive	shaft
Engine controls	bowden cable
Gearbox	hydraulic Hurth HSW630
Bowthruster	electric Cupa 24v (2013)
Sternthruster	electric Cupa 24v



Exhaust	watercooled
Thrust bearing	yes
Propeller type	fixed
Propeller blades	4
Propeller shaft material	stainless steel
Shaft lubrication	water
Electric bilge pump	2 x
Electrical installation	12/24/220v
Generator	wet exhaust Mitsubishi 6Kw in box
Running hours generator	980
Start battery	4 x 120amp
Service battery	4 x 120amp
Battery monitor	yes
Battery charger	Mastervolt 24v/40amp
Inverter	Mastervolt 24v/1500watt
Shorepower	with cable
Extra info	Shaftseal (type Volvo Penta) renewed in 2013

NAVIGATION

Electric compass	Autohelm ST50
Depth sounder	Autohelm ST50
VHF	Advansea DSC (2012)
Rudder angle indicator	VDO
Plotter	Nav Computer with 17 inch Neovo color scree + GPS and AIS (2013)
Electronis chart(s)	software
AIS receiver	yes

EQUIPMENT

Cockpit chairs	2 x
Bathing platform	yes



Deck shower	hot-cold
Anchor	Pool
Windlass	Lofrans
Sea railing	stainless steel
Grab rail (superstructure)	stainless steel
Railing side opening gates	with ladder
Pulpit	yes
Lifejackets	4x 2012
Lifebuoy	1 x
Wiper	3 x
Window heating	yes
Horn	electric
Fenders	yes
Mooring lines	yes
TV	Akai + DVD player 2013
Radio-cd player	Sony
Speakers in salon	yes
Speakers in cabin	yes
Fire extinguisher	2x 2013
Extra info	Upholstery, cushions and carpet in salon and dinette renewed in 2013. Upholstery forward and aft renewed 2013.



VALUE SUPERIOR 49



VALUE SUPERIOR 49





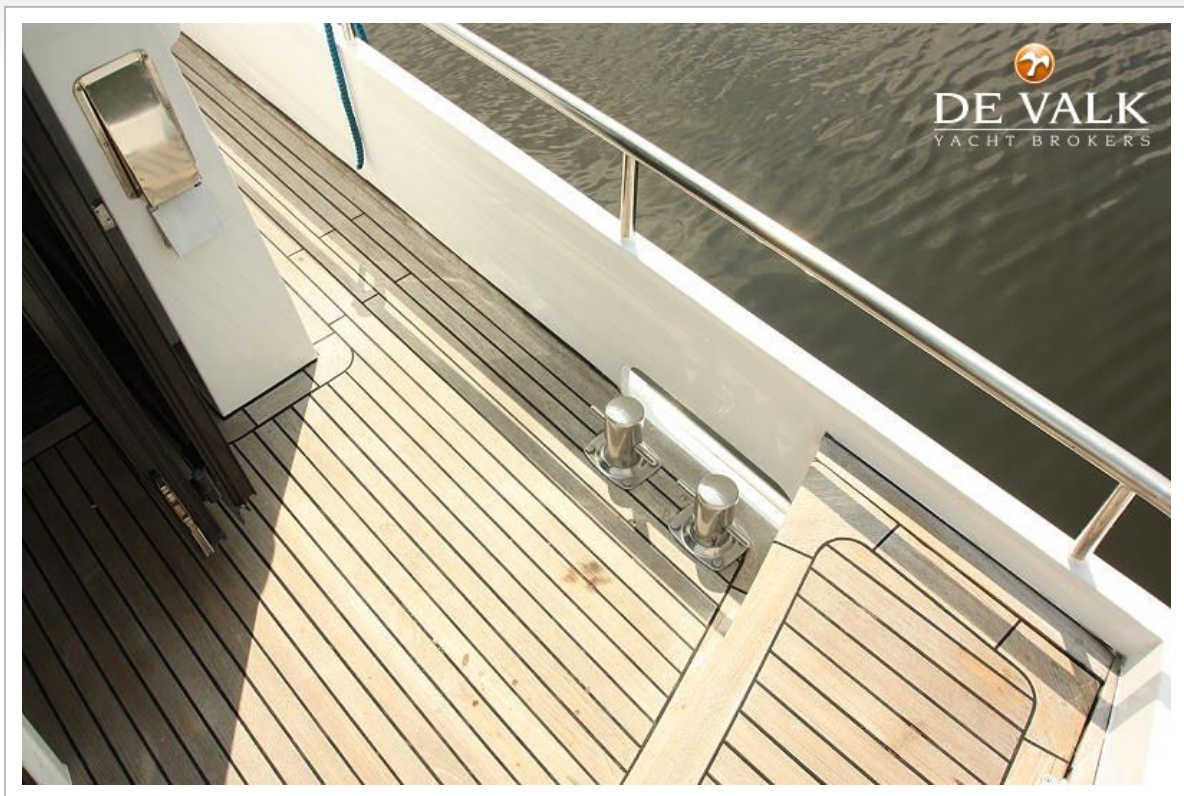
VALUE SUPERIOR 49

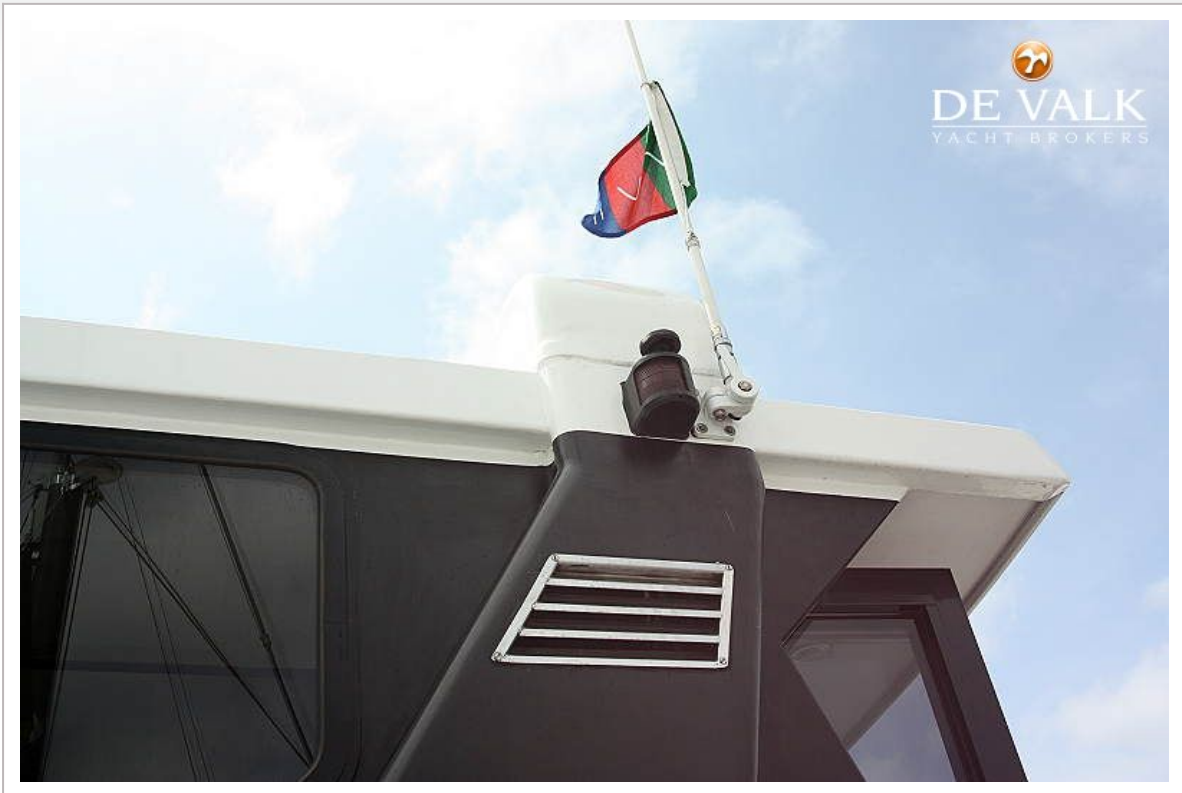


VALUE SUPERIOR 49



VALUE SUPERIOR 49





VALUE SUPERIOR 49



VALUE SUPERIOR 49



VALUE SUPERIOR 49



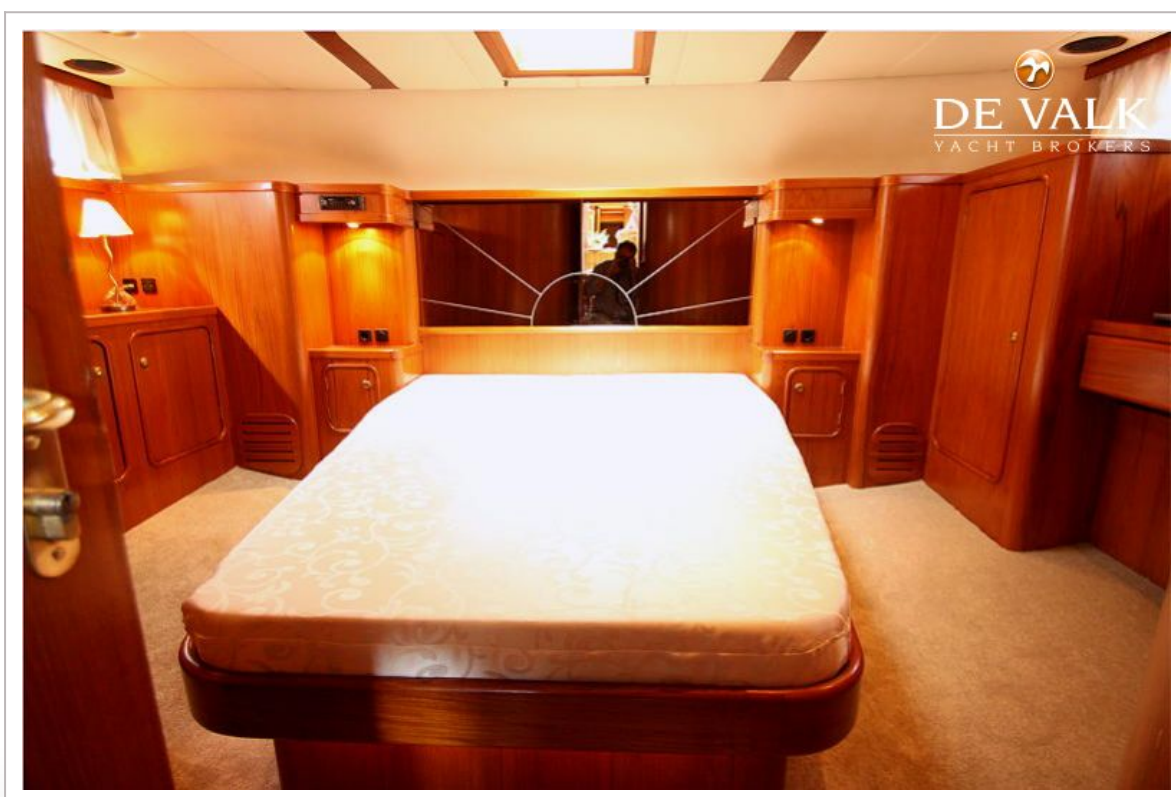
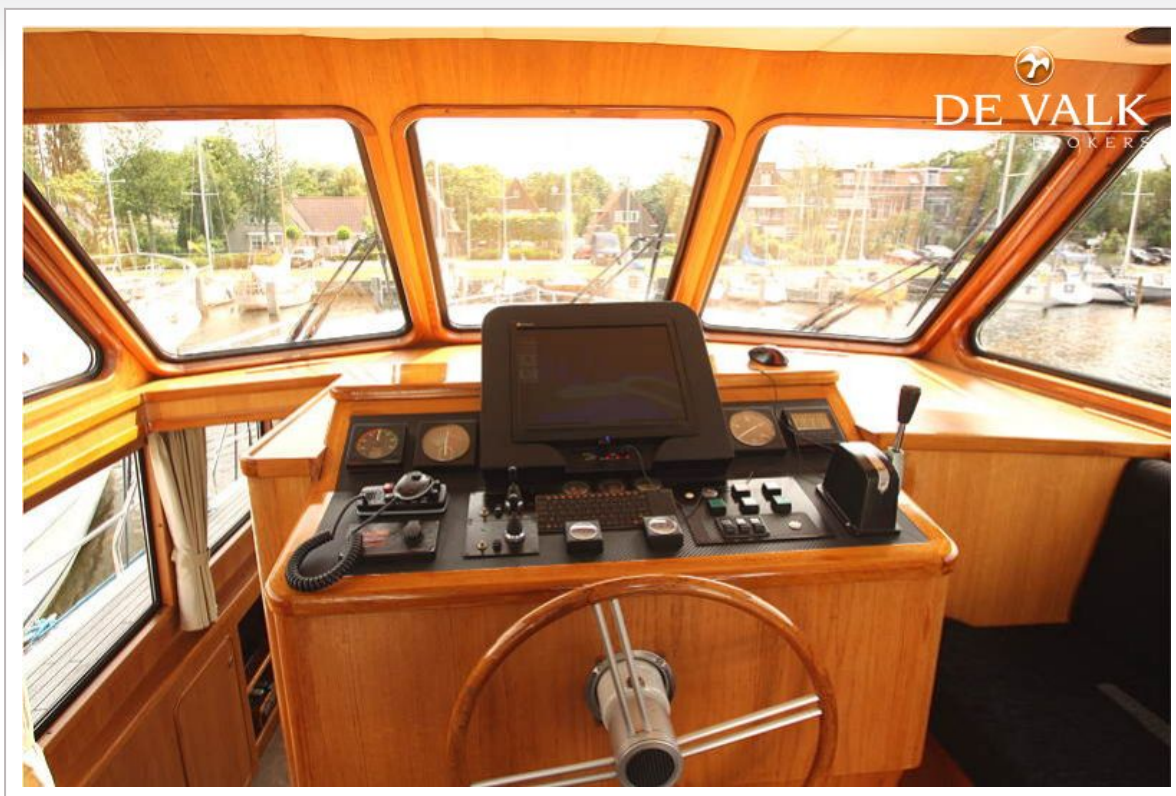
VALUE SUPERIOR 49



VALUE SUPERIOR 49



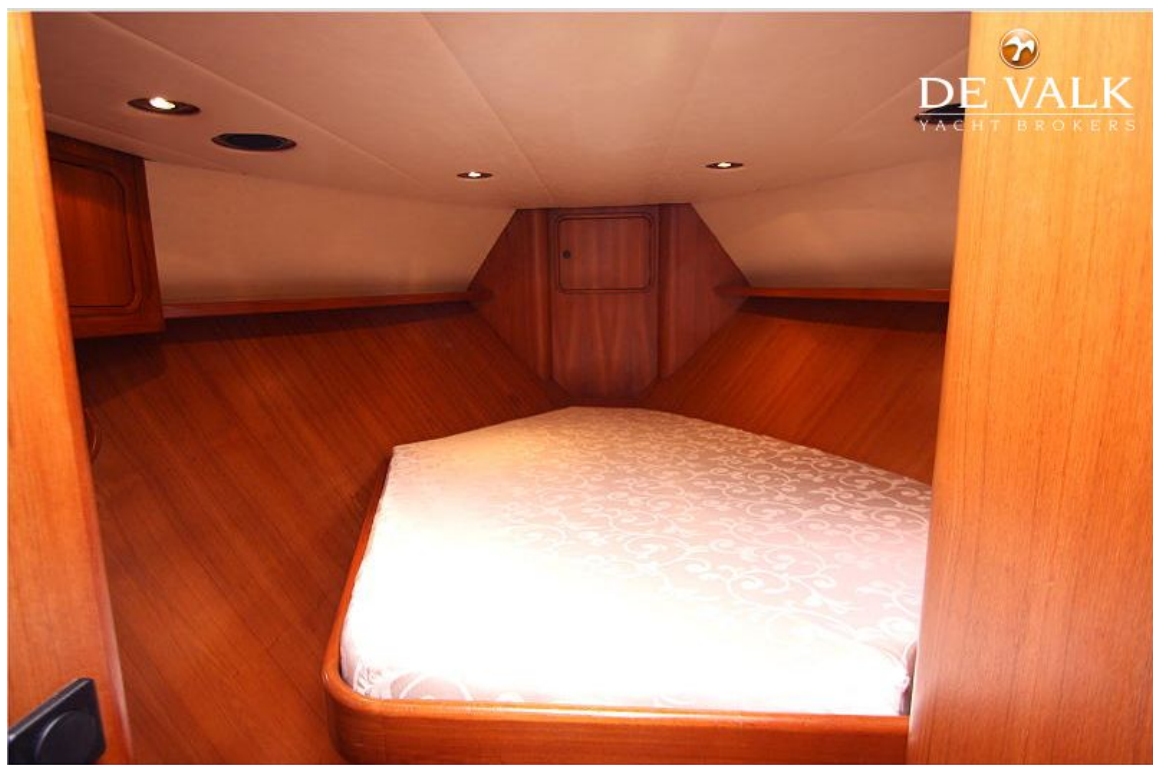
VALUE SUPERIOR 49



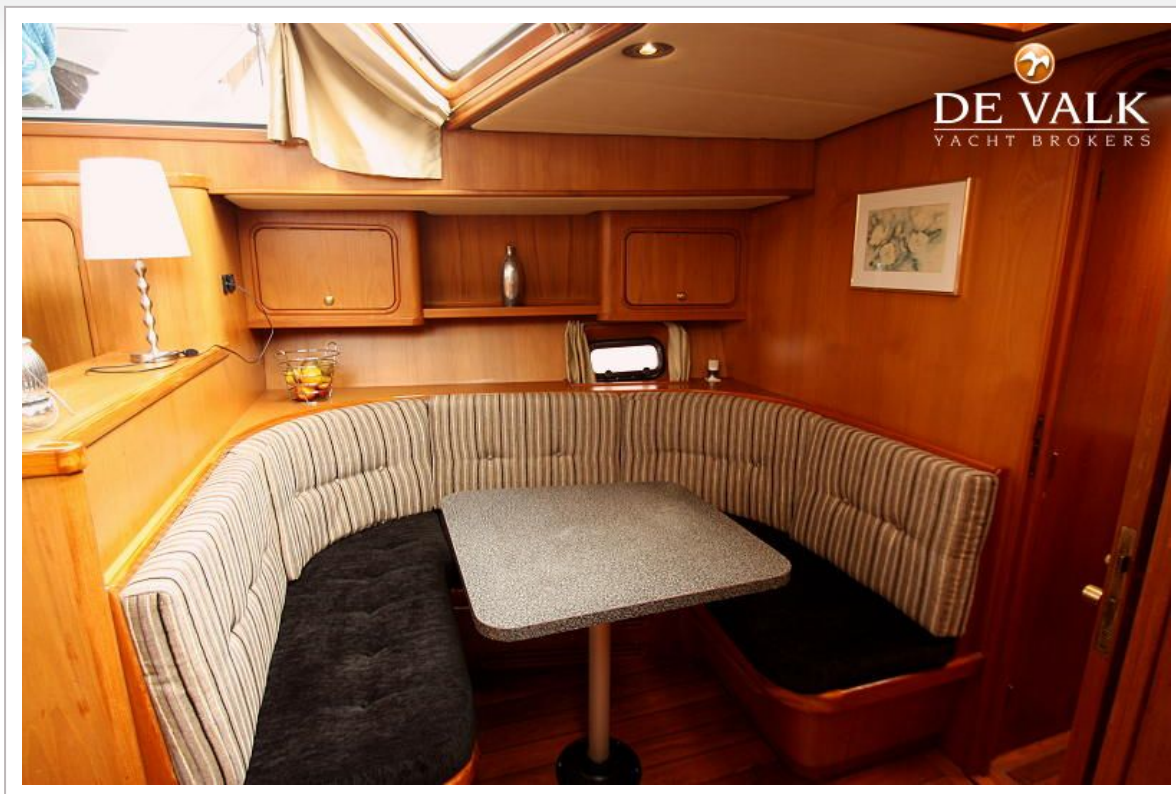
VALUE SUPERIOR 49



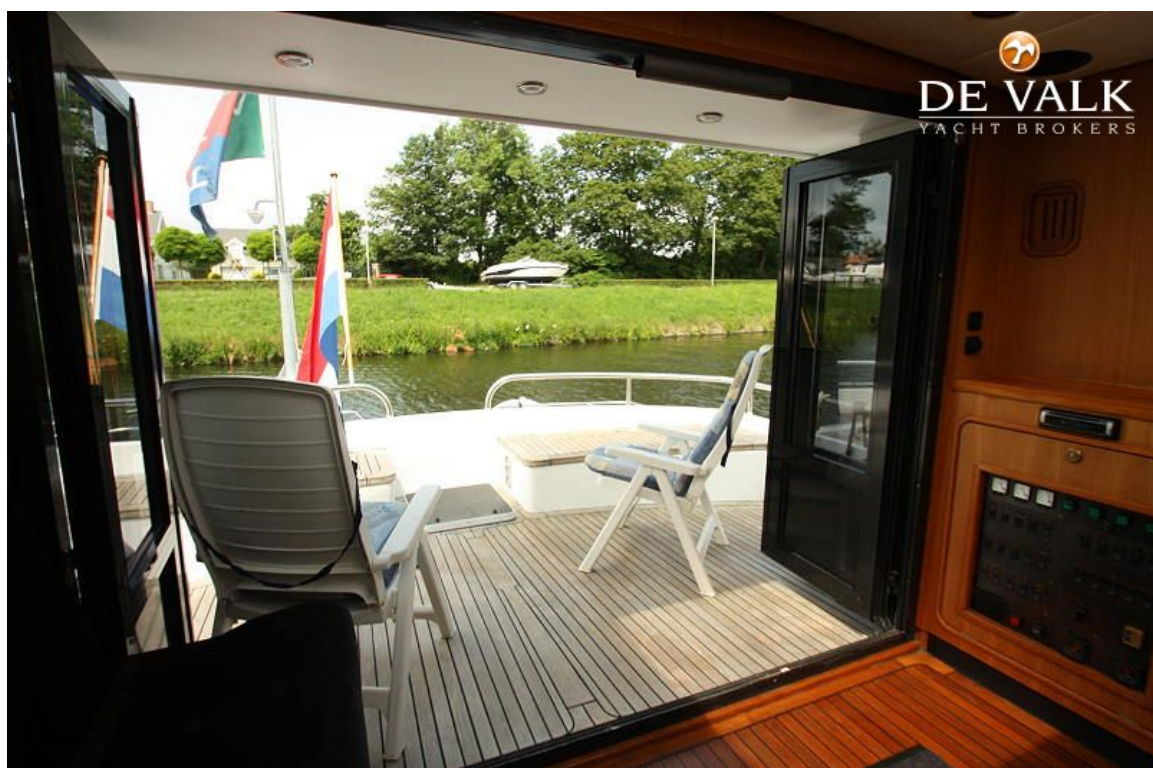
VALUE SUPERIOR 49



VALUE SUPERIOR 49



VALUE SUPERIOR 49



VALUE SUPERIOR 49





