



DE VALK
YACHT BROKERS



NAJAD 380



DE VALK
YACHT BROKERS

BROKERAGE | CHARTER | BERTHS | FINANCE | INSURANCE | YACHT MANAGEMENT

BROKER'S COMMENTS

This Najad 380 is not only a well proportioned and beautiful looking yacht, she also offers true ocean-going performance. Built using vacuum infusion, for a strong and 'stiff' hull, while two large double-berth cabins, a spacious saloon and fully equipped linear galley make life onboard extremely comfortable. She is in an immaculate conditions thanks to her owner who stored her inside every winter and hired only specialists for the maintenance of his yacht.

Johan Nooitgedagt

SPECIFICATIONS

Dimensions	11.55 x 3.65 x 1.95 (m)	Builder	Najad Varvet
Built	2005	Cabins	2
Material	GRP	Berths	4
Engine(s)	1 x Yanmar 4JH4-E diesel	Hp/Kw	54.42 (hp), 40.00 (kw)
Asking price	sold (VAT)	Lying	contact Hindeloopen

CONTACT

Sales office	De Valk Hindeloopen B.V.	Telephone	+31 514 52 40 00
Address	Oosterstrand 1 8713 JS Hindeloopen NL	E-mail	hindeloopen@devalk.nl

DISCLAIMER

These particulars are given in good faith as supplied but cannot be guaranteed.



GENERAL

Model	NAJAD 380
Type	sailing yacht
LOA (m)	11,55
Beam (m)	3,65
Draft (m)	1,95
Air draft (m)	17,75
Headroom (m)	1,95
Year built	2005
Builder	Najad Varvet
Country	Sweden
Designer	Judel Vrolijk
Displacement (t)	9,1
Ballast (tonnes)	lead in GRP
CE norm	A
Hull material	GRP
Hull colour	blue Blue Noir 5004
Hull shape	round-bilged
Keel type	bulb keel
Superstructure material	GRP
Rubbing strake	stainless steel
Deck material	GRP
Deck finish	teak
Superstructure deck finish	teak
Cockpit deck finish	teak
Antifouling (year)	2013/14
Dorades	2x
Window frame	aluminium
Window material	polycarbonate
Deckhatch	Including Skyscreens
Insulation	foam



Fuel tank (litre)	stainless steel 325 ltr.
Level indicator (fuel tank)	yes
Freshwater tank (litre)	stainless steel 400 ltr.
Level indicator (freshwater)	yes
Blackwater tank (litre)	stainless steel 55 ltr.
Blackwater tank extraction	deck extraction + pump
Wheel steering	cable steering
Emergency tiller	yes
More info on paintwork	Hull new painted in 2012. Alexseal two-component paint

ACCOMMODATION

Cabins	2
Berths	4
Interior	mahogany
Floor	yes
Open cockpit	yes
Aft deck	yes
Saloon	With cooling fan
Headroom saloon (m)	1,95 m
Heating	diesel ducted hot air Eberspracher
Chart table	yes
Aft Cabin	yes
Convertible berth	yes
Galley	yes
Countertop	plastic
Sink	stainless steel 2x
Cooker	calor gas
Oven	yes
Gas alarm	yes
Microwave	yes
Fridge	with freezer compartment



Hot water system	220V + engine
Water pressure system	electrical
Manual and/or foot pump	yes
Owners cabin	double bed
Bed length (m)	2 m
Wardrobe	hanging/drawers/shelves
Toilet system	electric 1x
Wash basin	in the bathroom Corian
Shower	shared
Guest cabin 1	twin single
Bed length (m)	2,10 m
Wardrobe	hanging/drawers/shelves

MACHINERY

No of engines	1
Make	Yanmar
Type	4JH4-E
HP	54,42
kW	40,00
Fuel	diesel
Year installed	2005
Maximum speed (kn)	7
Cruising speed (kn)	6
Consumption (l/hr)	4
Engine hours	880
Engine cooling system	freshwater heat exchanger
Drive	shaft
Engine controls	mechanical
Gearbox	mechanical
Bowthruster	electric
Exhaust	watercooled



Thrust bearing	yes
Propeller type	feathering Maxprop and spare propeller
Propeller blades	3x
Propeller shaft material	stainless steel
Shaft lubrication	water
Manual bilge pump	yes
Electric bilge pump	yes
Bilge alarm	yes
Electrical installation	12 / 220 volt
Batteries	yes
Start battery	1x 75Ah AGM
Service battery	3x 140Ah AGM
Bowthruster battery	2x 70Ah AGM (bowthruster and winches)
Battery charger	12-40ah including remote control
Inverter	2012
Diode battery combiners	yes
Shorepower	yes

NAVIGATION

Compass	Plastimo by helm position
Depth sounder	Raymarine ST60
Log	Raymarine ST60
Windset	Raymarine ST60
Repeater	Raymarine ST60
VHF	Simrad dual station DSC
VHF handheld	yes
Autopilot	Raymarine ST6001 Plus
Rudder angle indicator	On autopilot
Radar	Raymarine 2kW radome
GPS	Raynav 300 GPS stand-alone, GPS antennae for Raychart
Radar/GPS/plotter	Raymarine C120



Navtex	Furuno NX-300 incl. antenne
PC connection	By card table
Electronic chart(s)	yes
AIS transponder	AIS-CTRX Class B AIS Transponder, including on/off
Radio receiver	yes
EPIRB	McMurdo Smartfind G5
Searchlight	yes
Extra info	Raymarine flush mount kit ST60, emergency antenna for VHF

EQUIPMENT

Fixed windscreen	yes
Sprayhood	2011
Sprayhood with grab rail	Leather
Cockpit cover	2011
Bimini	yes
Winter cover	yes
Cockpit cushions	yes
Cockpit table	yes
Cockpit chairs	yes
Bathing platform	yes
Boarding ladder	stainless steel
Bow ladder	yes
Deck shower	yes
Anchor	Bruce 20kg
Anchor chain	40 mtr. 8mm
Anchor 2	Fortress With line
Windlass	electrical
Sea railing	wire
Grab rail (superstructure)	teak Stainless steel on fixed windscreen
Railing side opening gates	yes
Pushpit	yes



Pulpit	yes
Life raft	container
Life raft (pers)	4 pers.
Last life raft survey	yes
Lifebuoy	yes
Danbuoy	yes
Safety lines on deck	yes
Horn	air pressure
Radar reflector	Firdell Blipper radar reflector
Fenders	6x cilinder and 2 bal fenders
Mooring lines	Total 9 mooring lines
Spare parts	yes
Tools	yes
TV	Digitenne
Radio-cd player	yes
iPod connection	yes
Surround Sound System	yes
Cockpit speakers	2x
Speakers in salon	yes
Clock - barometer	yes
Fire extinguisher	3x
Extra info	complete LED navigation lights and night lighting in the ship

RIGGING

Rigging	fractional
Standing rigging	wire
Brand mast	Seldén
Material mast	aluminium
Spreaders	2x
Mainsail	DC Mylar 42m2 (2008)
Stoway mast	yes



Genoa	120% Cruising High Performance DC 77 (2011)
Genoa furler	yes
Genoa cover	yes
Gennaker	incl. snuffer and sheets 105m2 (2011)
Stormjib	12m2 (2010)
Reefing System	main in-mast furling
Backstay adjuster	mechanical
Boomvang	gasspring
Genoa sheetwinches	2x Anderson 52ST variable electric and two speed manual
Halyard winches	2x Anderson 12ST two speed on mast
Spinnaker winch	2x Anderson 28ST two speed
Winchcovers	yes
Spi-pole	carbon + cover
Extra info	Full control from the cockpit. Extras Bulletalie and Barberhauler.



NAJAD 380



NAJAD 380



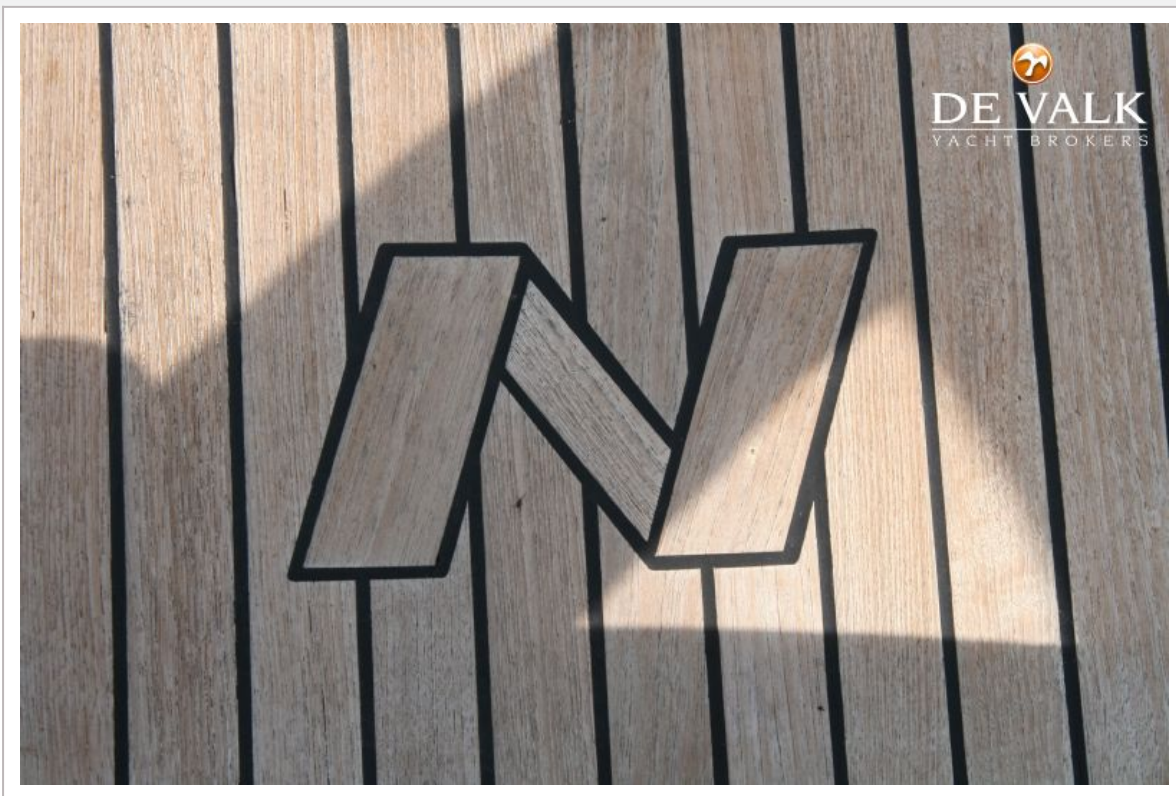
NAJAD 380



NAJAD 380



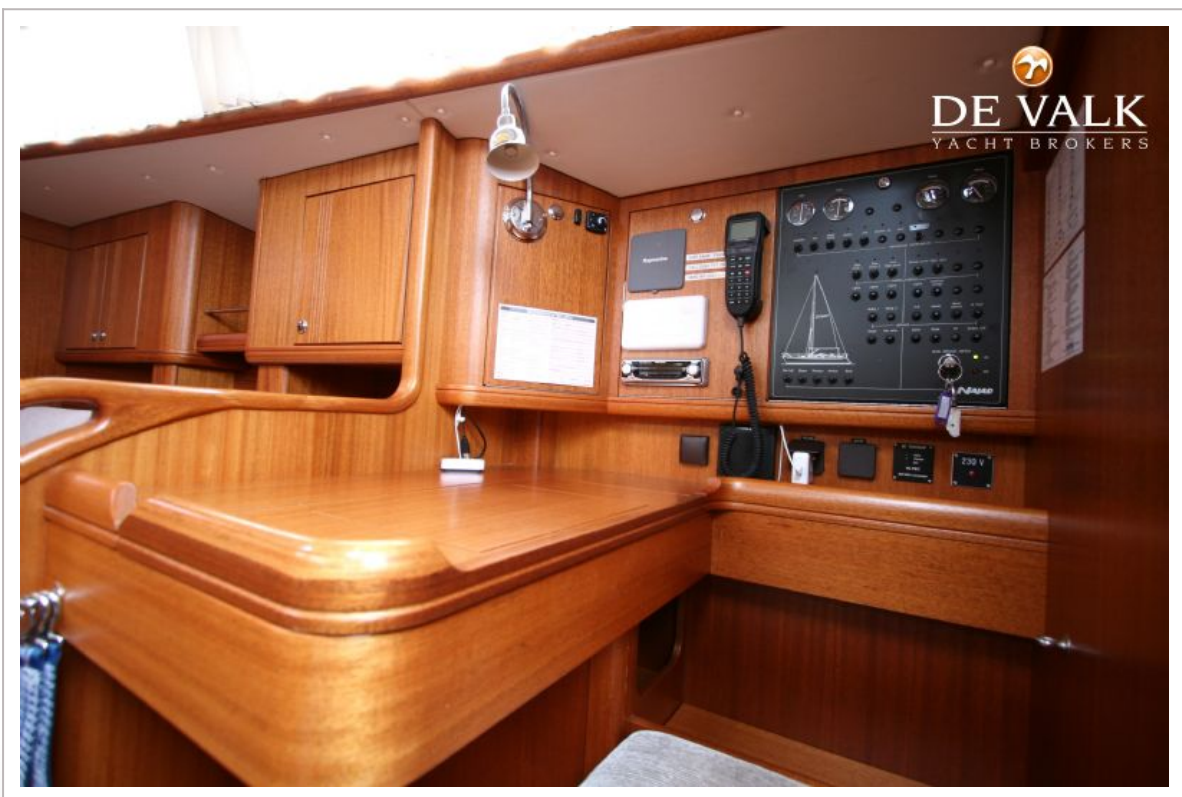
NAJAD 380



NAJAD 380



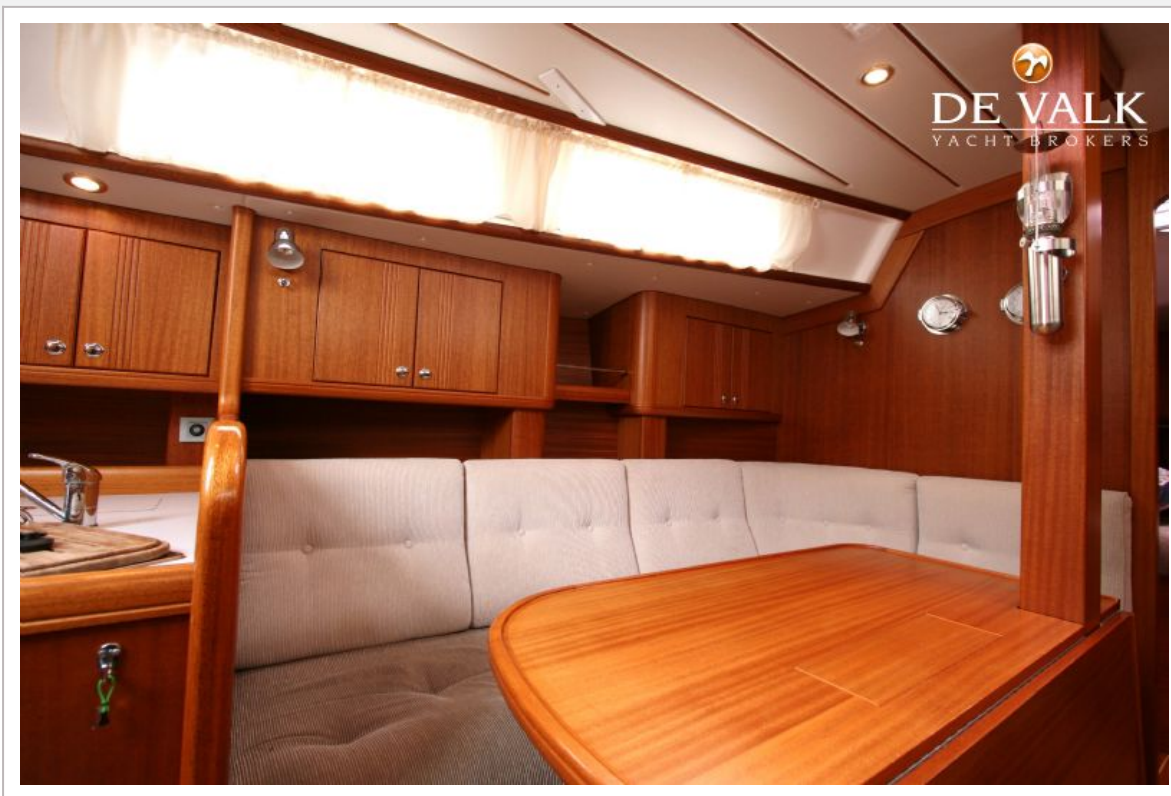
NAJAD 380



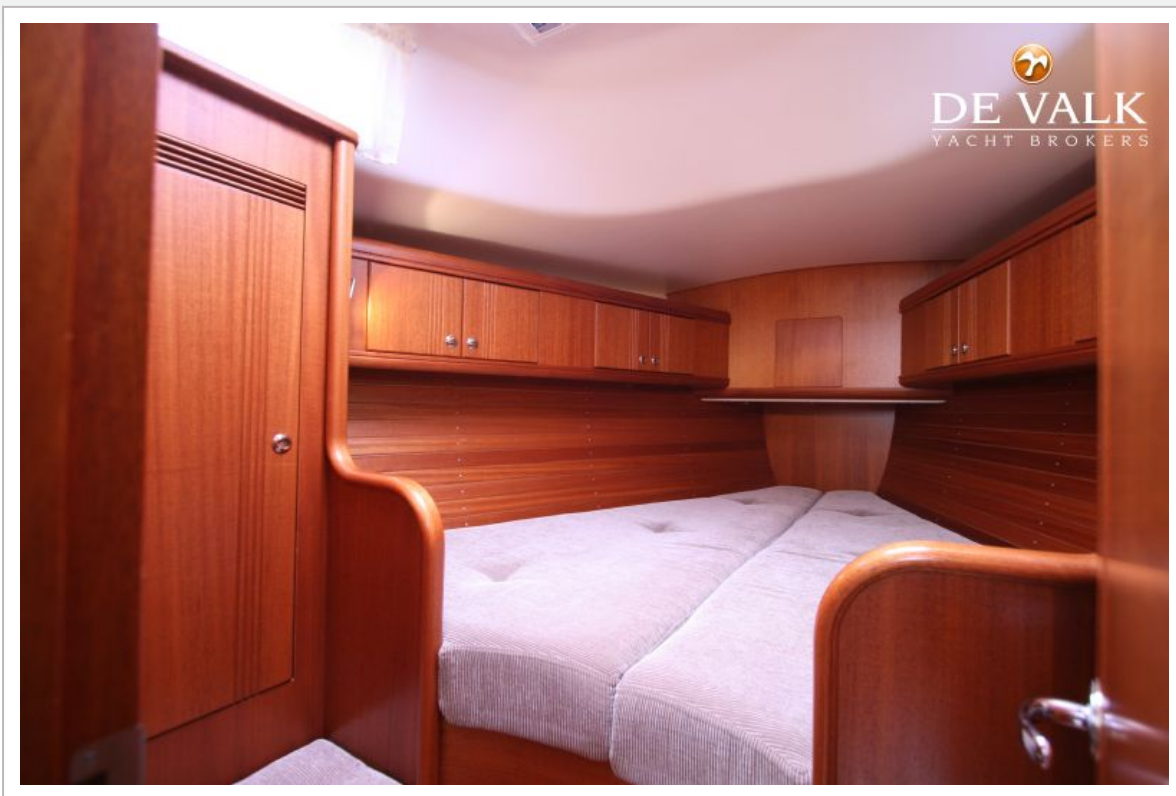
NAJAD 380



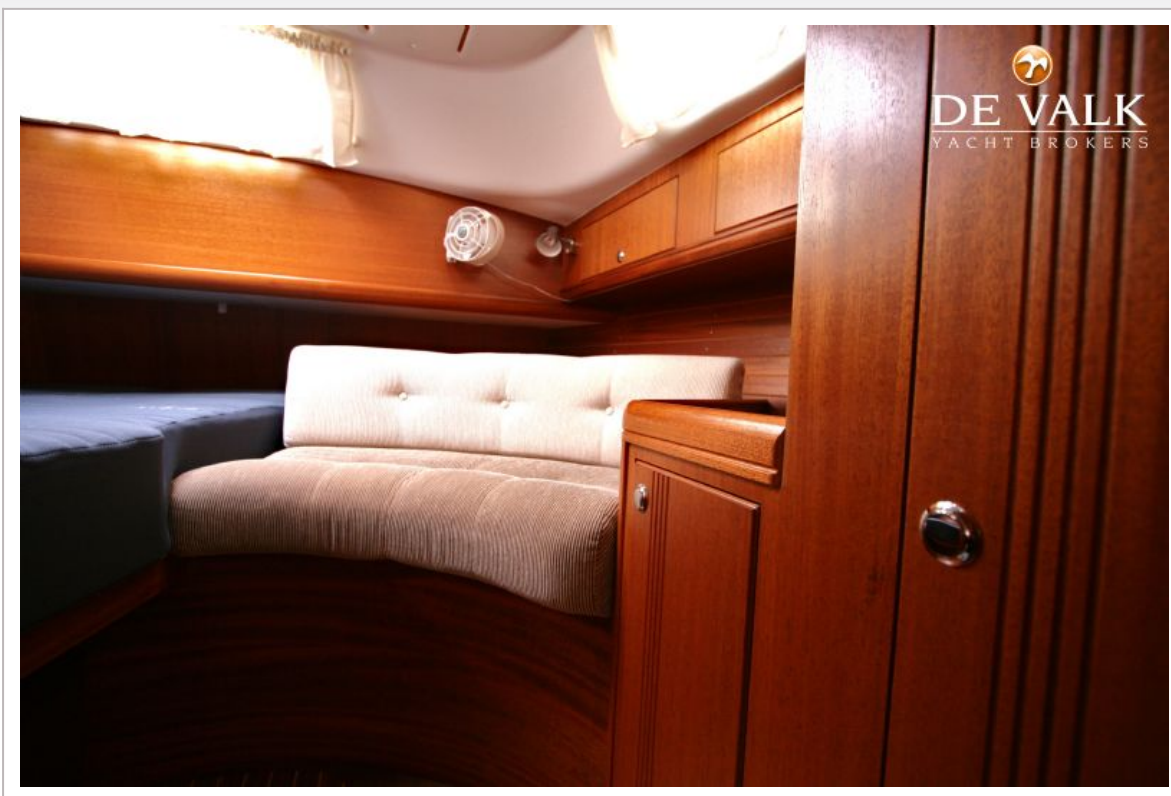
NAJAD 380



NAJAD 380



NAJAD 380



NAJAD 380



