



DE VALK
YACHT BROKERS



GRAND BANKS EASTBAY 49 HX



DE VALK
YACHT BROKERS

GRAND BANKS EASTBAY 49 HX

BROKER'S COMMENTS

Built by famous and appreciated Grand Banks Yachts and designed in partnership with C. Raymond Hunt, this deep-V hull provides for superior comfort, performance and safety. Generous accommodations in the pilothouse and below decks accommodations with an excellent owner cabin forward with en-suite facilities. Good guest cabin and the U-shaped galley complete the overall picture for this gentleman's motor yacht.

Hans Visser

SPECIFICATIONS

Dimensions	16.99 x 4.98 x 1.32 (m)	Builder	Grand Banks Yachts
Built	2007	Cabins	2
Material	GRP	Berths	6
Engine(s)	2 x Caterpillar C-12 Acert diesel	Hp/Kw	2 x 705.00 (hp), 518.17 (kw)
Asking price	sold (VAT)	Lying	at sales office

CONTACT

Sales office	De Valk Sneek	Telephone	+31 (0)515 42 80 30
Address	Zwolsmanweg 7 8606 KC Sneek NL	E-mail	sneek@devalk.nl

DISCLAIMER

These particulars are given in good faith as supplied but cannot be guaranteed.



GENERAL

Model	GRAND BANKS EASTBAY 49 HX
Type	motor yacht
LOA (m)	16,99
Beam (m)	4,98
Draft (m)	1,32
Air draft (m)	4,50
Headroom (m)	2,00
Year built	2007
Builder	Grand Banks Yachts
Country	Malaysia
Designer	C.R. Hunt
Displacement (t)	21
CE norm	A
Hull material	GRP
Hull colour	blue
Hull shape	deep-V
Superstructure material	GRP
Rubbing strake	stainless steel
Deck material	GRP
Deck finish	teak Epoxy bonded
Superstructure deck finish	moulded in
Cockpit deck finish	teak
Window material	tempered glass
Portholes	stainless steel
Fuel tank (litre)	GRP 1 x 2366
Freshwater tank (litre)	aluminum 2 x 332
Blackwater tank (litre)	polyethylene 318 Sealand
Blackwater tank extraction	pump
Wheel steering	hydraulic Seastar



Extra info

Computank tank monitor Double access engine room Ocean-Air flyscreens for deckhatches Extra insulated bulkhead owner/guestcabin Model HX decksalon/pilothouse with detachable SX model aft superstructure panel (can be taken out in 30 minutes).

ACCOMMODATION

Cabins	2
Berths	6
Interior	teak
Floor	teak and holly
Open cockpit	yes
Pilot house/deck saloon	with L-shape settee
Saloon	with U-shaped settee
Headroom saloon (m)	2,00
Heating	diesel ducted hot air Webasto Airtop 5000
Air-conditioning	reverse cycle airco 1 x Dometic Marine Air + 2 x compressor
Dinette	in pilothouse/decksalon
Dinette to convert into berth	yes
Galley	U-shape
Countertop	Silestone
Sink	stainless steel
Cooker	electric Gaggenau 4-burner
Oven	Gaggenau combi
Fridge	electrical 2 x Coolmatic
Freezer	icemaker U-line
Hot water system	220V + engine Seaward approx. 75 ltrs
Water pressure system	electrical
Owners cabin	double bed
Wardrobe	hanging/drawers/shelves
Bathroom	en suite
Toilet	en suite Tecma



Toilet system	electric
Wash basin	in the bathroom
Shower	en suite
Guest cabin 1	twin single
Wardrobe	hanging and drawers
Bathroom	en suite
Toilet	en suite
Toilet system	electric
Wash basin	in the bathroom
Shower	en suite
Extra info	Leather upholstery Toilets can discharge into holdingtank or directly overboard

MACHINERY

No of engines	2
Make	Caterpillar
Type	C-12 Acert
HP	705,00
kW	518,17
Fuel	diesel
Year installed	2007
Maximum speed (kn)	32
Cruising speed (kn)	8
Engine hours	737
Engine cooling system	freshwater heat exchanger
Drive	shaft
Engine controls	electrical Twindisc+Trolling valve
Gearbox	hydraulic Twindisc
Bowthruster	electric Sleipner
Propeller type	fixed
Propeller blades	5



Propeller shaft material	stainless steel
Shaft lubrication	water
Manual bilge pump	1 x
Electric bilge pump	2 x
Electrical installation	12/24/220v
Generator	separator Onan E-Series 11kW
Running hours generator	355
Start battery	2 x 255amp
Service battery	2 x 255amp
Generator battery	yes
Battery monitor	Mastervolt Masterlink
Battery charger	Mastervolt 12v/50amp + Mastervolt 24v/30amp
Inverter	Mastervolt 24v/2000watt
Shorepower	with cable
Insulation transformer	Pro-safe
Trimtabs	Bennett
Extra info	Seafire carbon monoxide alarms Automatic fire extinguisher system in engine room

NAVIGATION

Compass	Ritchie
Electric compass	via Raymarine autopilot
Depth sounder	Raymarine ST60
Log	Raymarine ST60
Windset	Raymarine ST60
VHF	Raymarine R240E
Autopilot	with remote Raymarine ST6002
Rudder angle indicator	Raymarine ST60
Radar	Raymarine Pathfinder 4kW
GPS	Raymarine
Plotter	2 x Raymarine E120



Electronis chart(s)	yes
Loudhailer	Seafarer

EQUIPMENT

Cockpit cushions	yes
Bathing platform	yes
Boarding ladder	stainless steel
Transom door	yes
Deck shower	yes
Anchor	CQR Plough 1 x
Anchor chain	yes
Windlass	electrical Maxwell + capstan
Deck wash	yes
Sea railing	stainless steel
Grab rail (superstructure)	yes
Railing side opening gates	yes
Pushpit	yes
Pulpit	yes
Wiper	3 x Excalto
Horn	air pressure
Fenders	yes
Mooring lines	yes
TV	yes
TV receiver	yes
Satellite	Raymarine Intellian open array receiver
Radio-cd player	Pioneer
Cockpit speakers	yes
Speakers in salon	yes
Auto extinguisher system	yes
Extra info	Anchorchain counter display Electric opening front pilothouse window Sliding windows in pilothouse High Fidelity sound system on board with multiple speakers





GRAND BANKS EASTBAY 49 HX



GRAND BANKS EASTBAY 49 HX



GRAND BANKS EASTBAY 49 HX



GRAND BANKS EASTBAY 49 HX



GRAND BANKS EASTBAY 49 HX



GRAND BANKS EASTBAY 49 HX



GRAND BANKS EASTBAY 49 HX



GRAND BANKS EASTBAY 49 HX



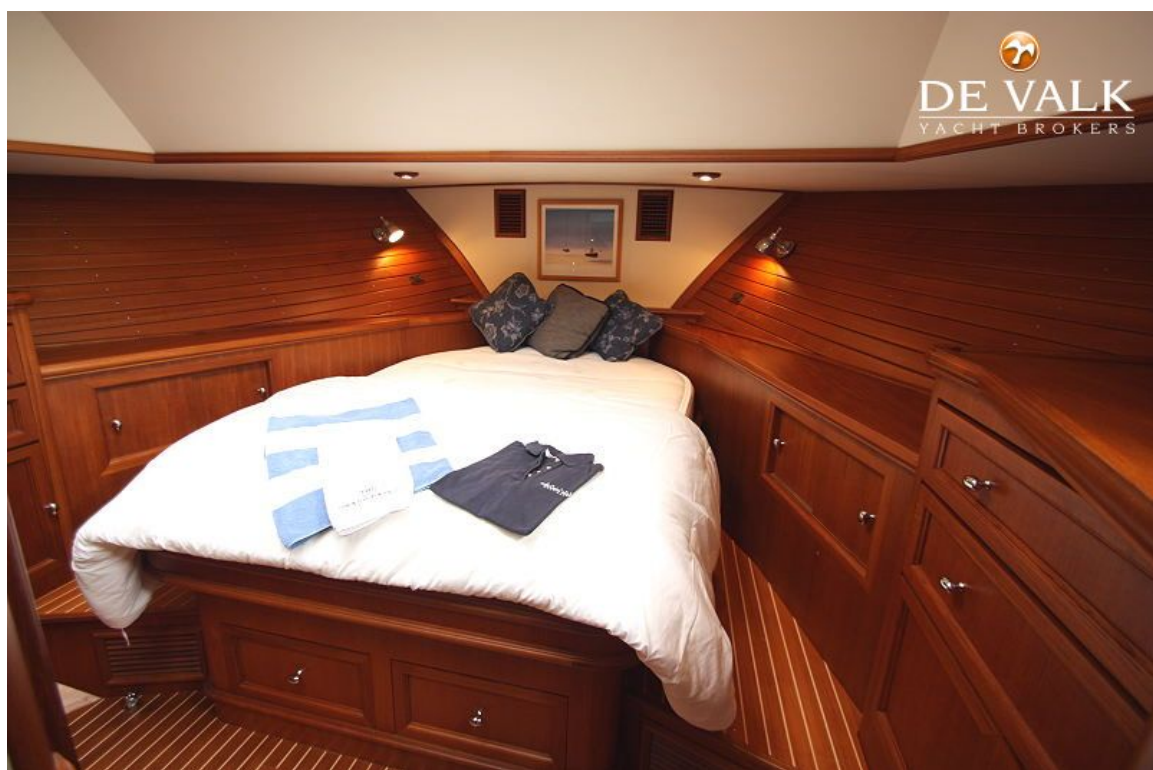
GRAND BANKS EASTBAY 49 HX



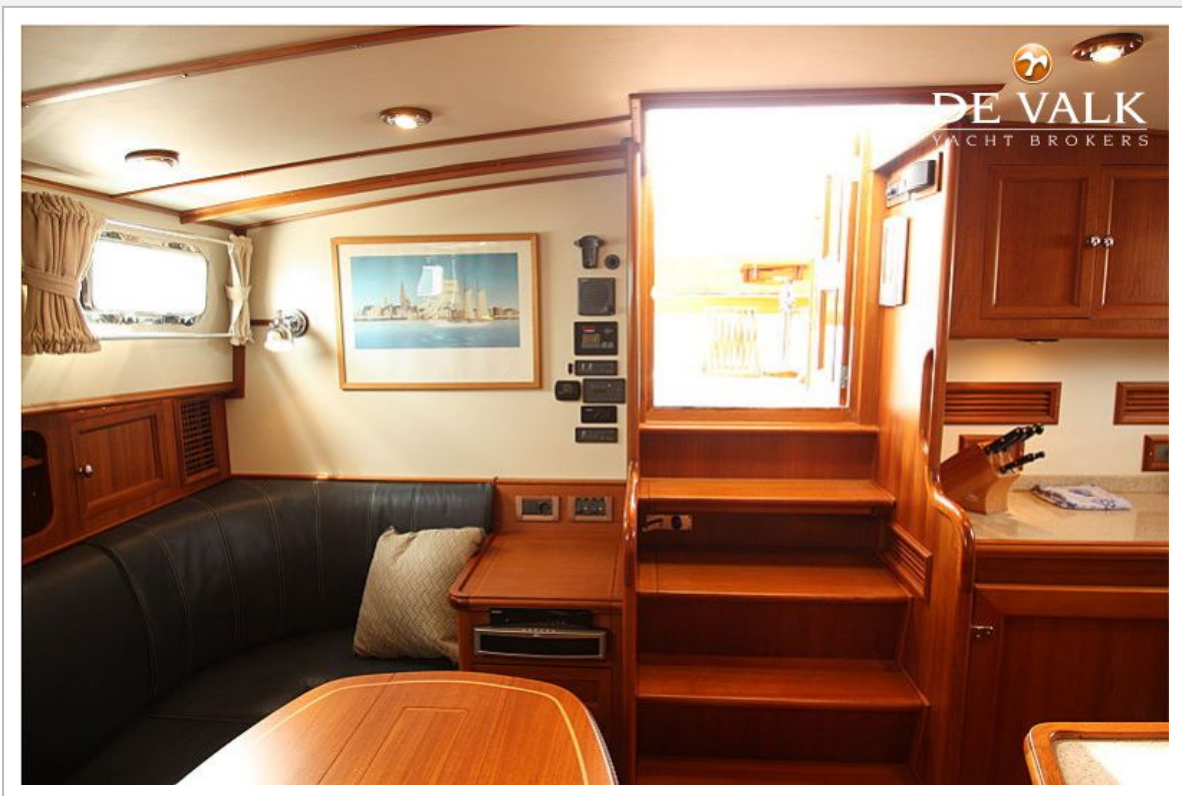
GRAND BANKS EASTBAY 49 HX



GRAND BANKS EASTBAY 49 HX



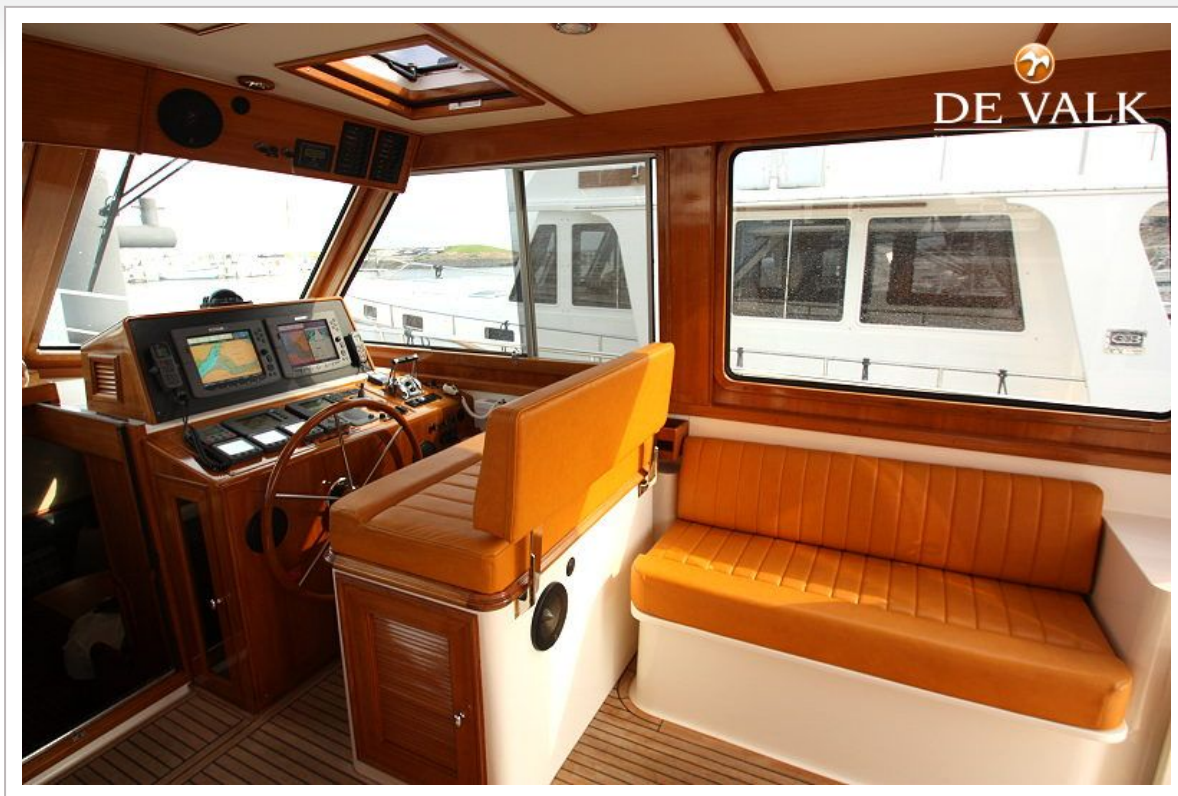
GRAND BANKS EASTBAY 49 HX



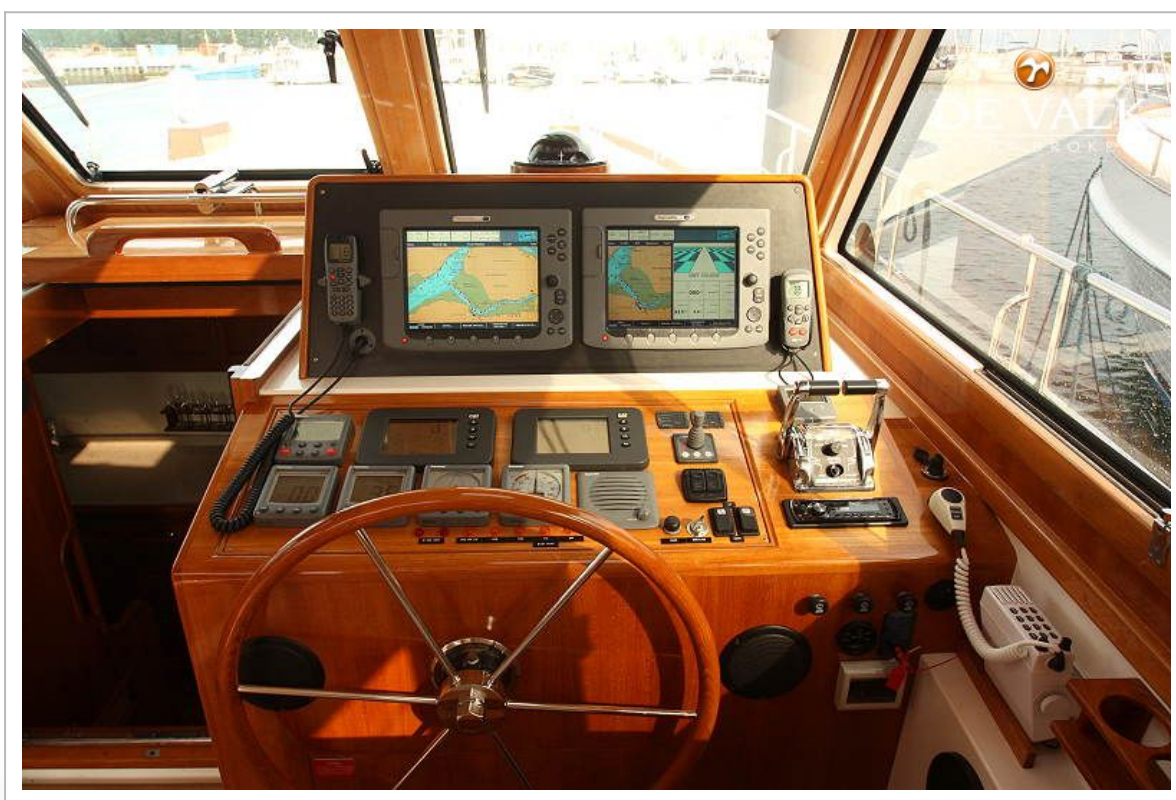
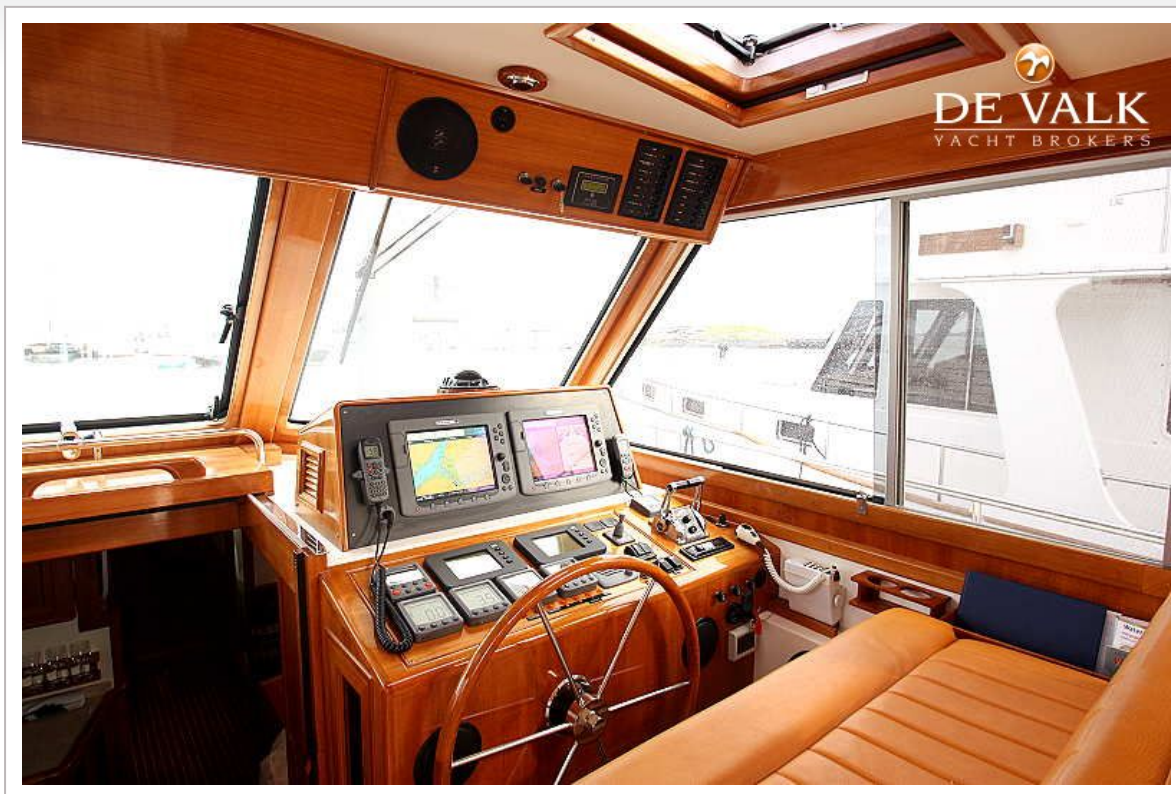
GRAND BANKS EASTBAY 49 HX



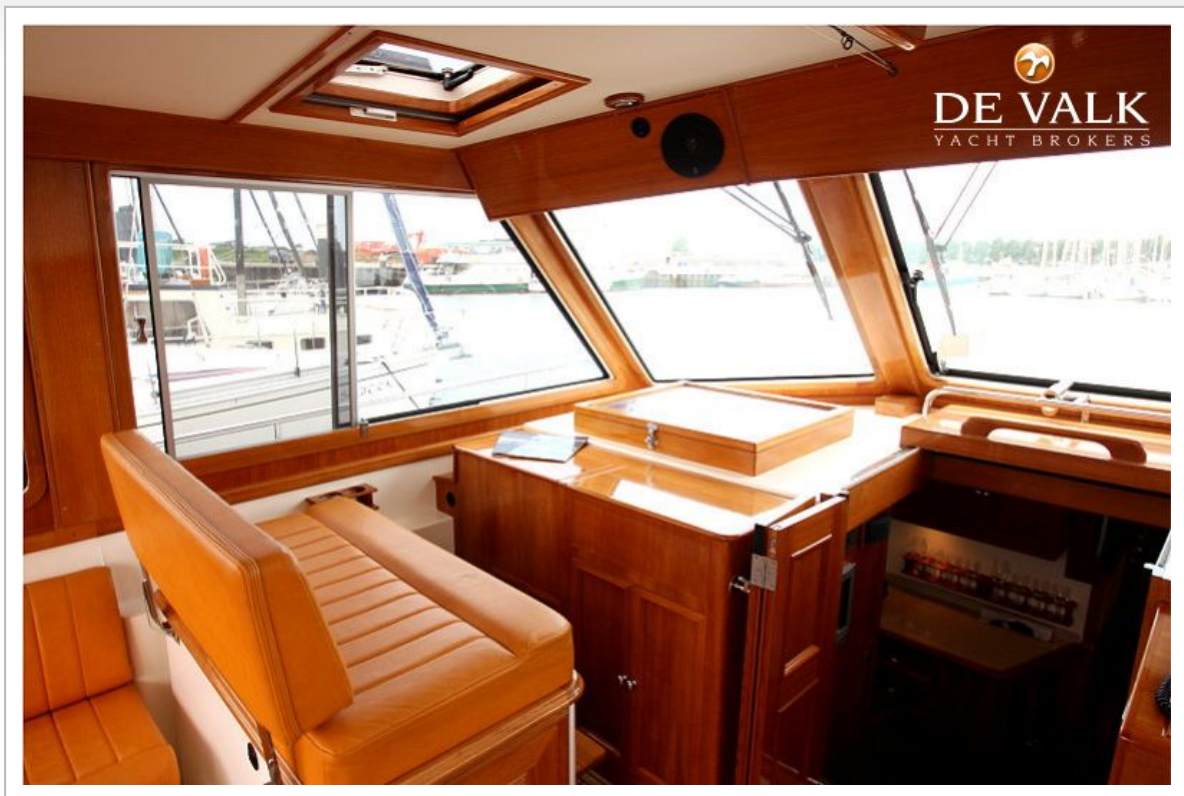
GRAND BANKS EASTBAY 49 HX



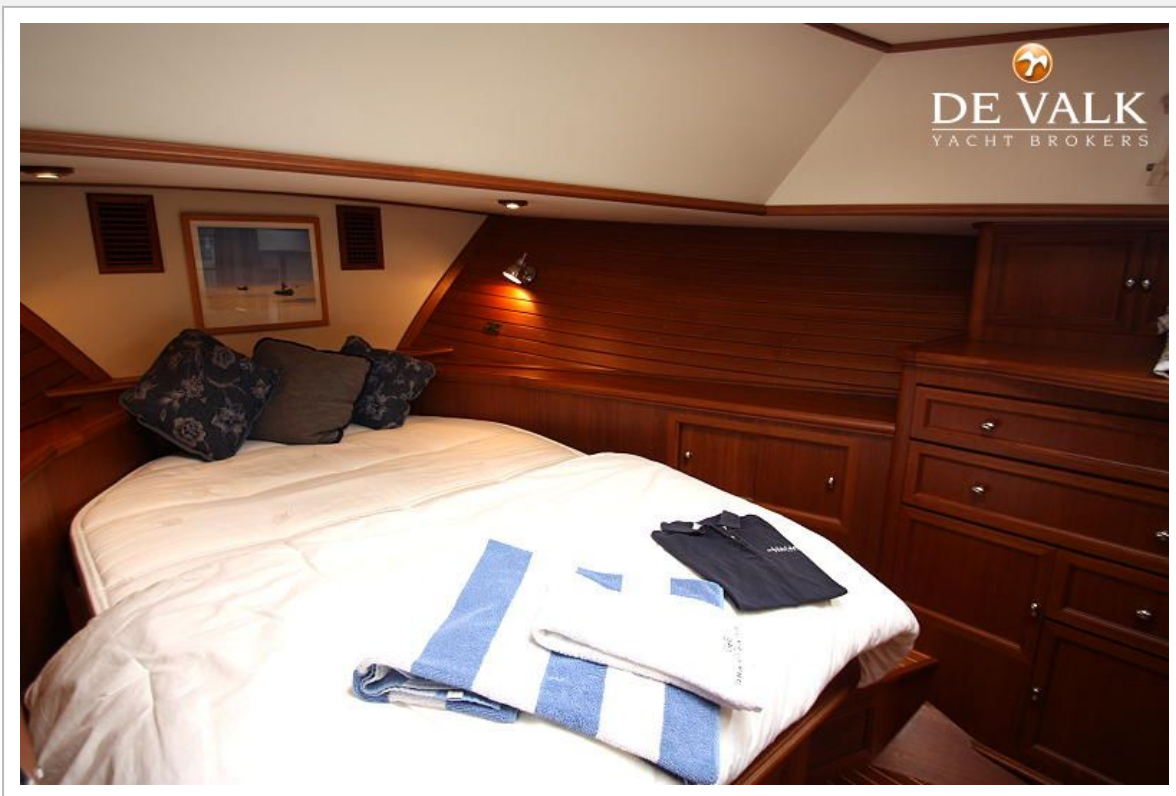
GRAND BANKS EASTBAY 49 HX



GRAND BANKS EASTBAY 49 HX



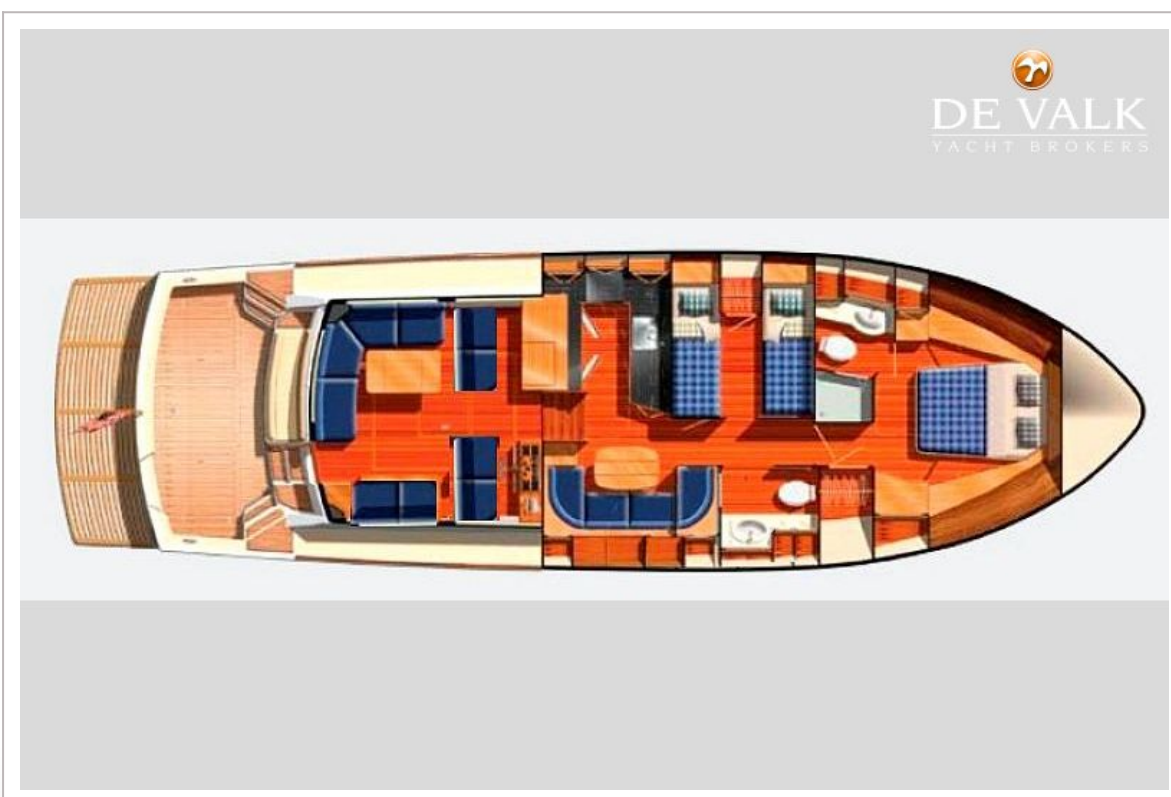
GRAND BANKS EASTBAY 49 HX



GRAND BANKS EASTBAY 49 HX



GRAND BANKS EASTBAY 49 HX



GRAND BANKS EASTBAY 49 HX

