



DE VALK
YACHT BROKERS

NAJAD 370



DE VALK
YACHT BROKERS

BROKER'S COMMENTS

Beautifully crafted first class Scandinavian sailing yacht build by German Lloyds specifications. As Najad has been building yachts for many years, they have built up a very good reputation. With their excellent designs, craftsmanship and detailing, their whole range is very much appreciated by the discerning yachtsman. The "Samadé" has a carefull owner since new This safe and comfortable yacht is very well kept for and equipped with a bowthruster, stoway-main and genua of 2011 and many more features.

Reinier van der Wolf

SPECIFICATIONS

Dimensions	11.25 x 3.63 x 1.80 (m)	Builder	NajadVarvet AB, Henan
Built	1994	Cabins	2
Material	GRP	Berths	6
Engine(s)	1 x Volvo Penta MD22 diesel	Hp/Kw	57.00 (hp), 41.90 (kw)
Asking price	sold (VAT)	Lying	elsewhere / Not at sales office

CONTACT

Sales office	De Valk Monnickendam B.V.	Telephone	+31 (0)299 65 63 50
Address	Hoogedijk 6 1145 PM Katwoude NL	E-mail	monnickendam@devalk.nl

DISCLAIMER

These particulars are given in good faith as supplied but cannot be guaranteed.



GENERAL

Model	NAJAD 370
Type	sailing yacht
LOA (m)	11,25
LWL (m)	9,45
Beam (m)	3,63
Draft (m)	1,80
Air draft (m)	16,50
Headroom (m)	1,98
Year built	1994
Launched	1994
Builder	NajadVarvet AB, Henan
Country	Sweden
Displacement (t)	9,7
Ballast (tonnes)	4
CE norm	A
Hull material	GRP
Hull colour	white
Hull shape	round-bilged
Keel type	fin keel
Superstructure material	GRP
Rubbing strake	wood With brass
Deck material	GRP
Deck finish	teak
Superstructure deck finish	teak
Cockpit deck finish	teak
Antifouling (year)	2016
Dorades	4
Window frame	aluminium
Window material	perspex
Deckhatch	3



Fuel tank (litre)	stainless steel 275
Level indicator (fuel tank)	yes
Freshwater tank (litre)	GRP 450
Level indicator (freshwater)	yes
Blackwater tank (litre)	stainless steel 130
Blackwater tank extraction	deck extraction + pump
Wheel steering	cable steering
Emergency tiller	yes
More info on paintwork	Epoxy system

ACCOMMODATION

Cabins	2
Berths	6
Interior	mahogany
Floor	teak and holly
Saloon	yes
Heating	diesel ducted hot air Webasto HL32 Airtop
Chart table	yes
Aft Cabin	yes
Dinette	yes
Galley	yes
Countertop	plastic
Sink	stainless steel
Cooker	calor gas Three burner
Oven	yes
Fridge	Isotherm
Hot water system	220V + engine
Water pressure system	electrical
Manual and/or foot pump	yes
Owners cabin	twin single
Wardrobe	drawers and shelves



Bathroom	separate
Toilet	separate
Toilet system	electric Vetus
Wash basin	in the bathroom
Guest cabin 1	v-bed
Wardrobe	drawers and shelves
Bathroom	shared
Shower	shared

MACHINERY

No of engines	1
Make	Volvo Penta
Type	MD22
HP	57,00
kW	41,90
Fuel	diesel
Year installed	1994
Maximum speed (kn)	7
Cruising speed (kn)	6
Consumption (l/hr)	Approx. 4
Engine hours	2248 (12-4-2016)
Engine cooling system	freshwater heat exchanger
Drive	shaft
Engine controls	bowden cable
Gearbox	mechanical
Bowthruster	electric Sidepower + remote
Exhaust	watercooled
Propeller type	fixed
Propeller blades	3
Propeller shaft material	stainless steel
Shaft lubrication	water



Manual bilge pump	yes
Electrical installation	12/220 v
Batteries	2
Start battery	AGM 100 Amp (2016)
Service battery	AGM 250 Amp (2016)
Battery monitor	Mastervolt
Battery charger	Mastervolt IVO Smart 12/50-3
Inverter	Mastervolt Sine 12v 2000W
Shorepower	with cable
Extra info	distribution belt renewed in September 2015.

NAVIGATION

Compass	Suunto
Depth sounder	Autohelm
Log	Autohelm
Windset	yes
VHF	Shipmate RS 8300
Autopilot	Autohelm ST6000
GPS	yes
Radar/plotter	Raymarine ST80
Navtex	McMundo

EQUIPMENT

Sprayhood	yes
Cockpit cover	yes
Sun awning	yes
Cockpit cushions	yes
Cockpit table	yes
Boarding ladder	stainless steel
Anchor	Bruce
Anchor chain	yes



Anchor 2	yes
Windlass	manual Simpson & Lawrence
Sea railing	wire
Grab rail (superstructure)	teak
Pushpit	yes
Pulpit	yes
Life raft	valise (or bag)
Last life raft survey	must be cheched
Fenders	yes
Mooring lines	yes
TV	yes
Radio-cd player	yes
DVD player	yes
Surround Sound System	yes
Sub-woofer	yes
Speakers in salon	yes
Clock - barometer	yes
Fire extinguisher	yes

RIGGING

Rigging	sloop
Standing rigging	wire 1994
Brand mast	Seldén
Material mast	aluminium
Spreaders	2
Fully battened mainsail	vertical 2011
Stoway mast	yes
Jib I	hardly used 1994
Genoa	2011
Genoa furler	Furlex
Genoa cover	yes



Reefing System	main in-mast furling
Backstay adjuster	mechanical Seldén
Boomvang	gasspring Seldén
Genoa sheetwinches	electric 2x Lewmar ST50
Halyard winches	yes
Spi-pole	aluminium



NAJAD 370



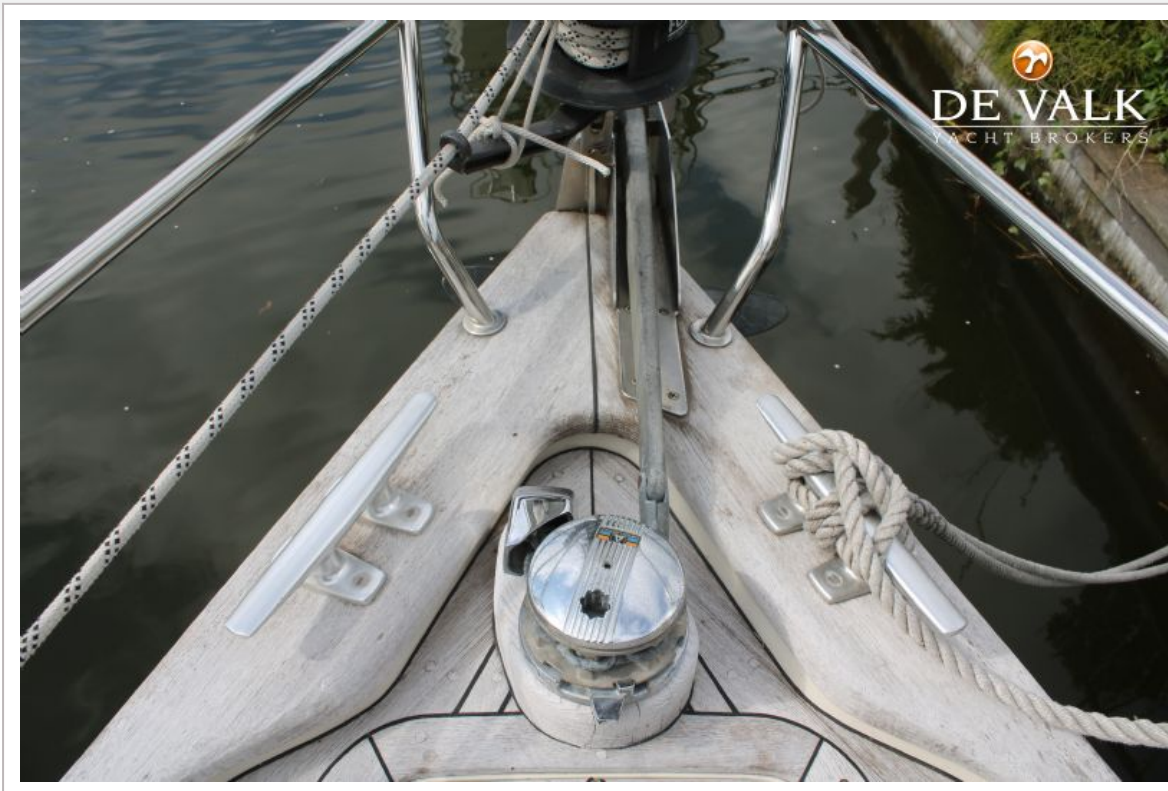
NAJAD 370



NAJAD 370



NAJAD 370



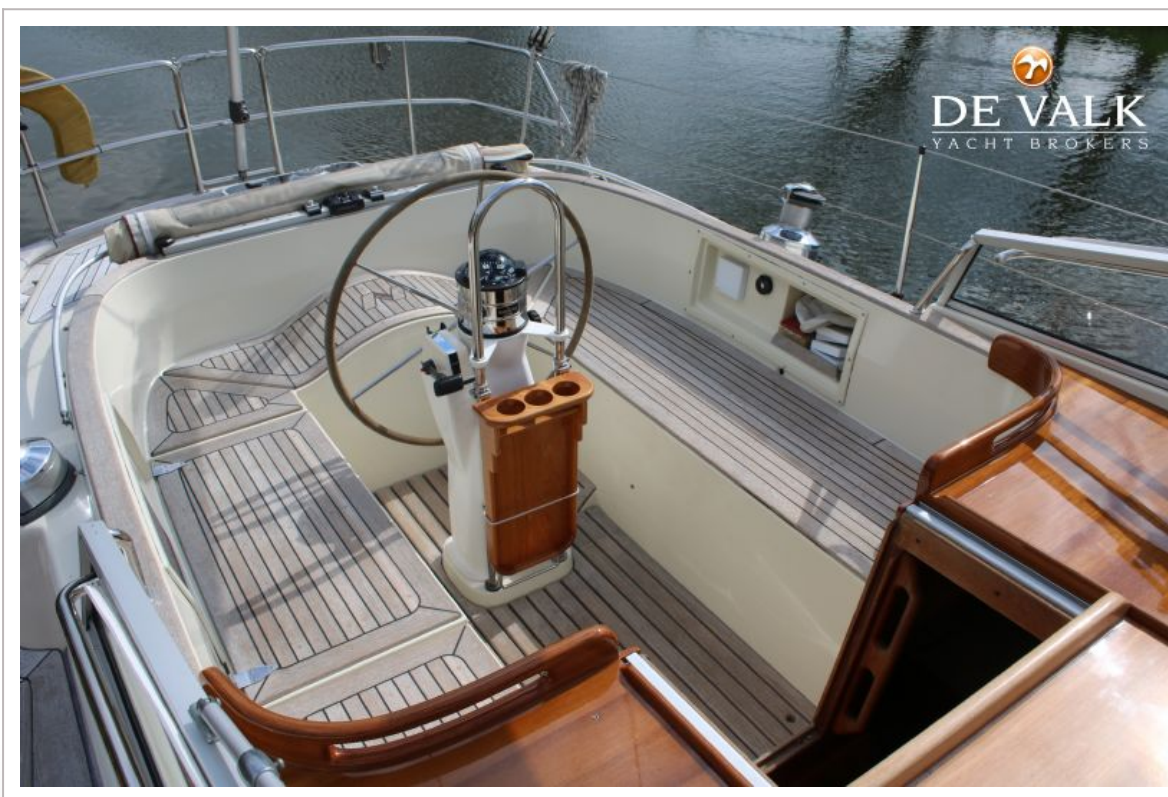
NAJAD 370



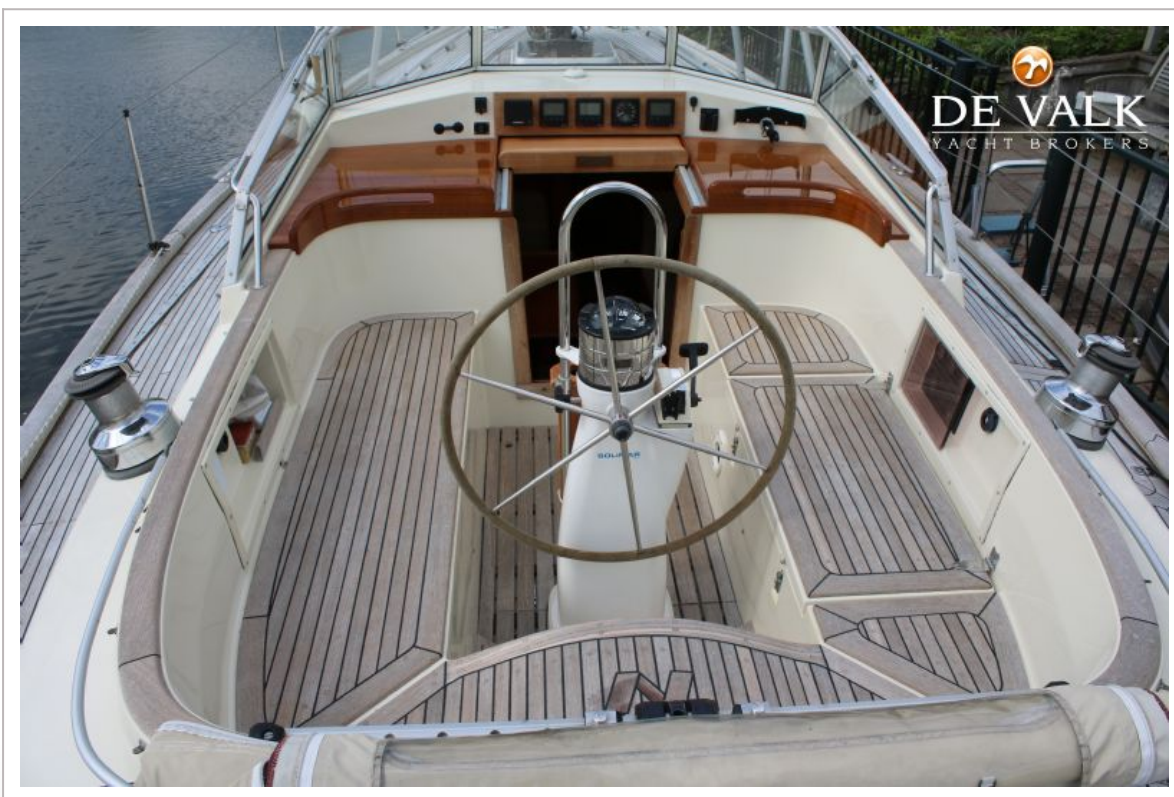
NAJAD 370



NAJAD 370



NAJAD 370



NAJAD 370



NAJAD 370



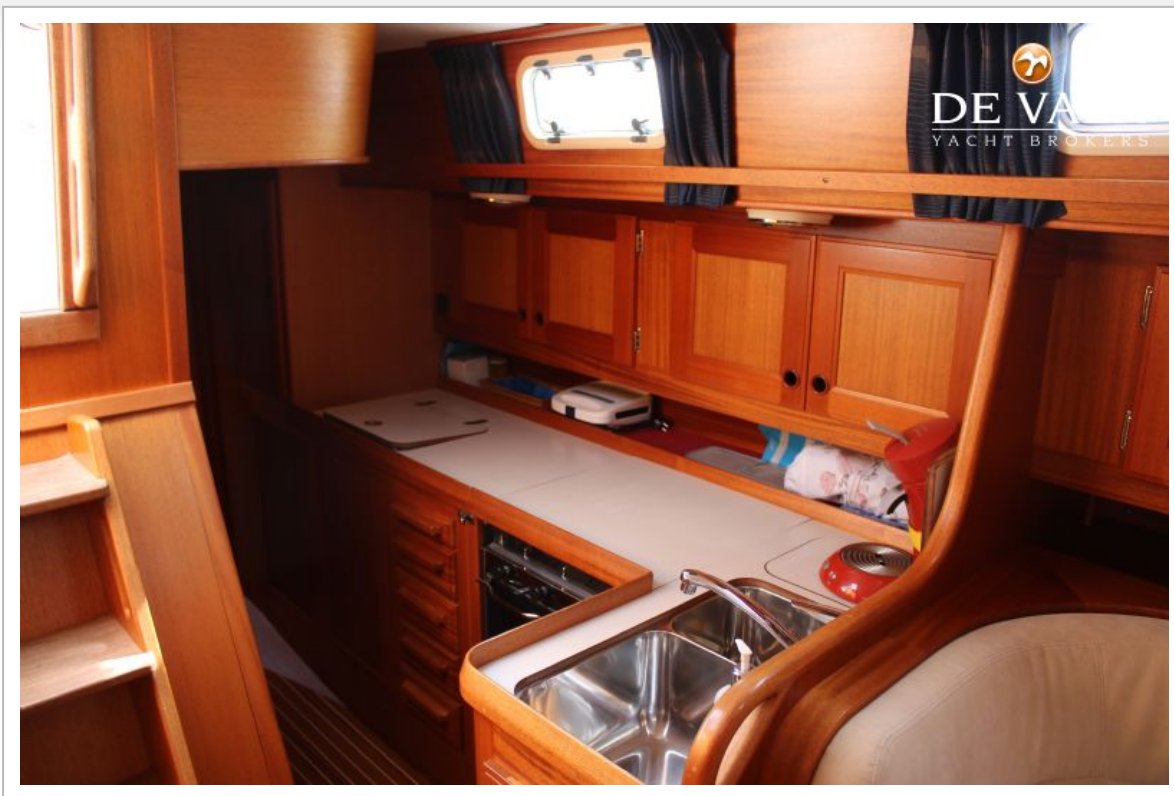
NAJAD 370



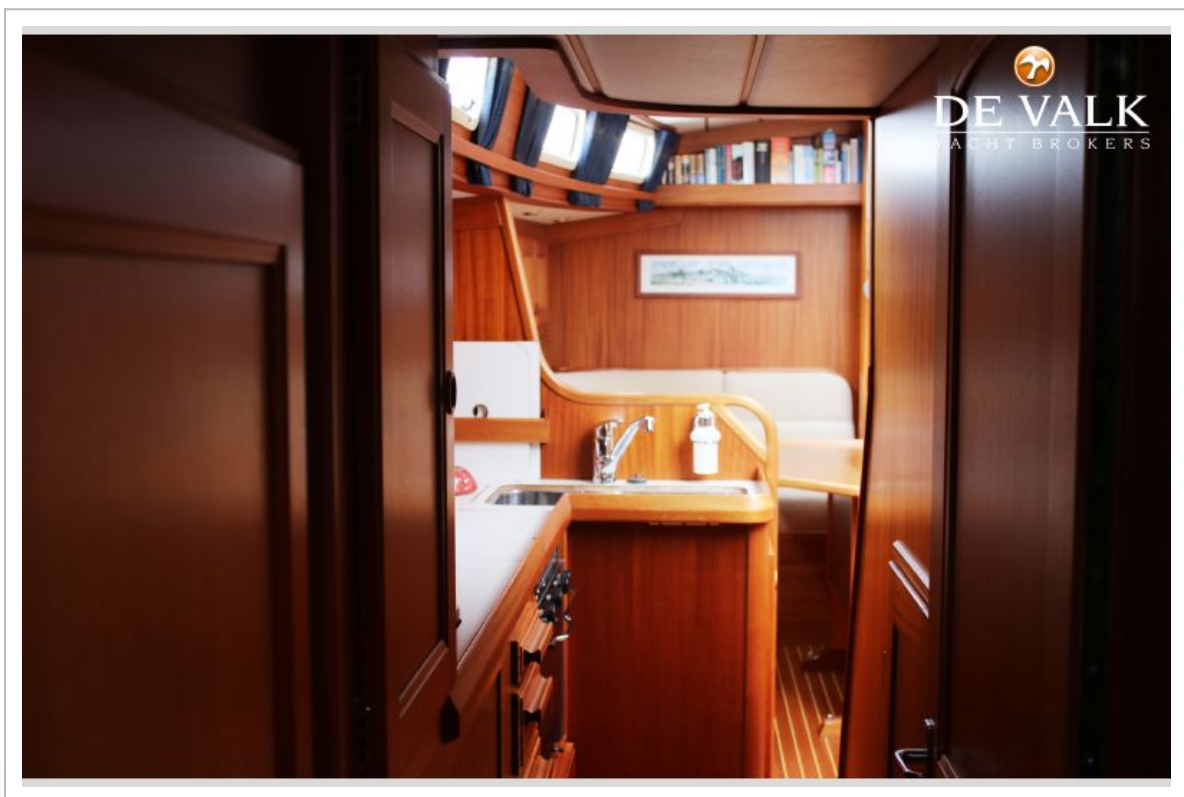
NAJAD 370



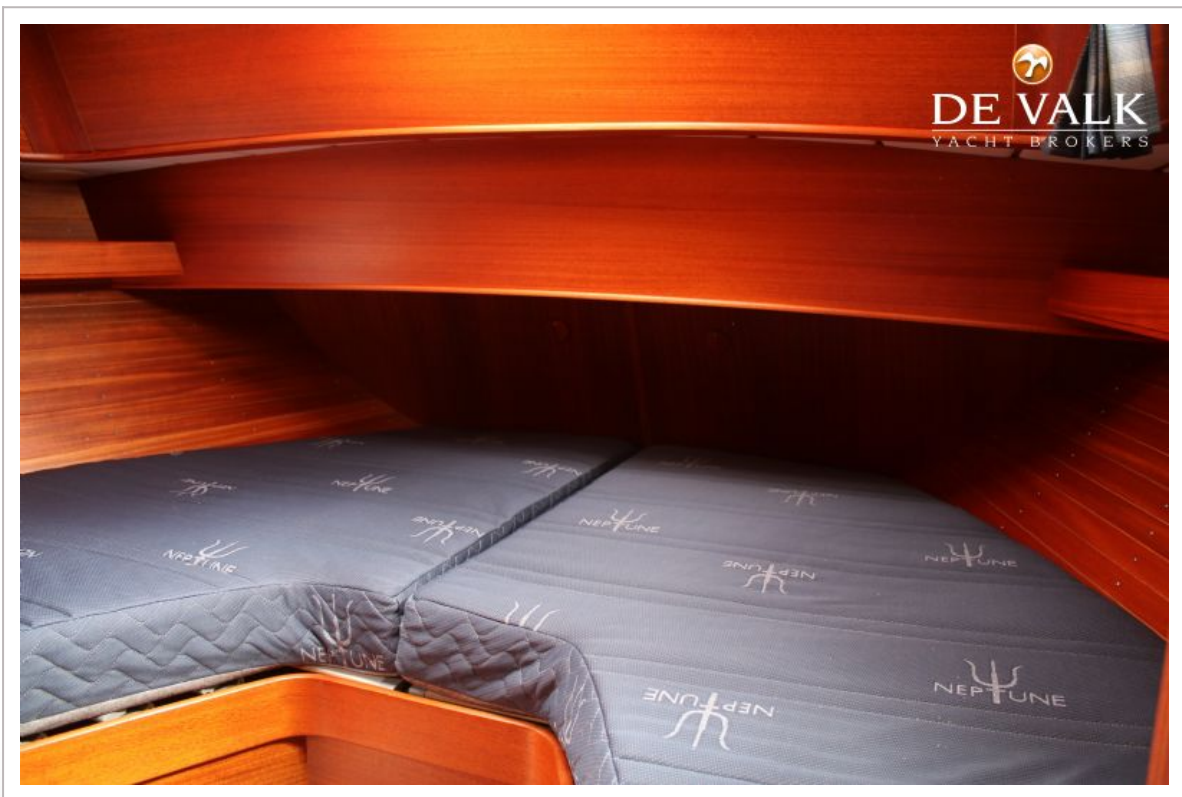
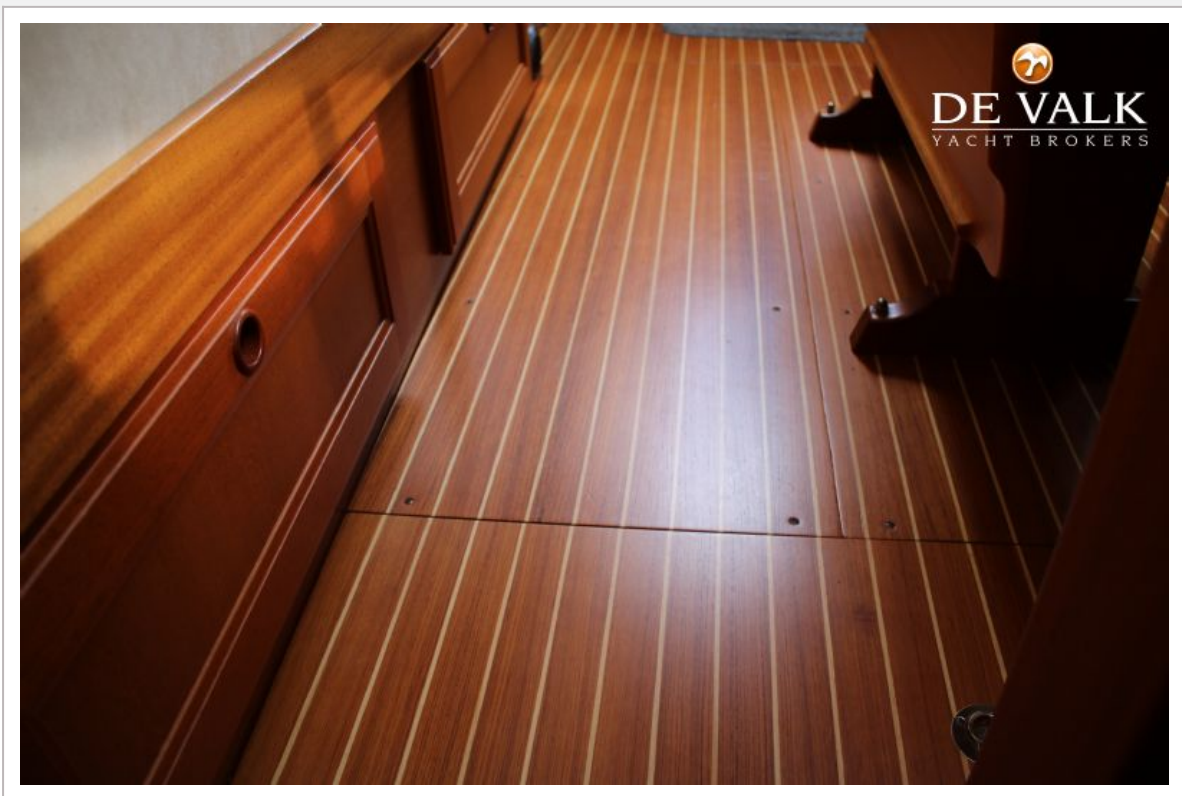
NAJAD 370



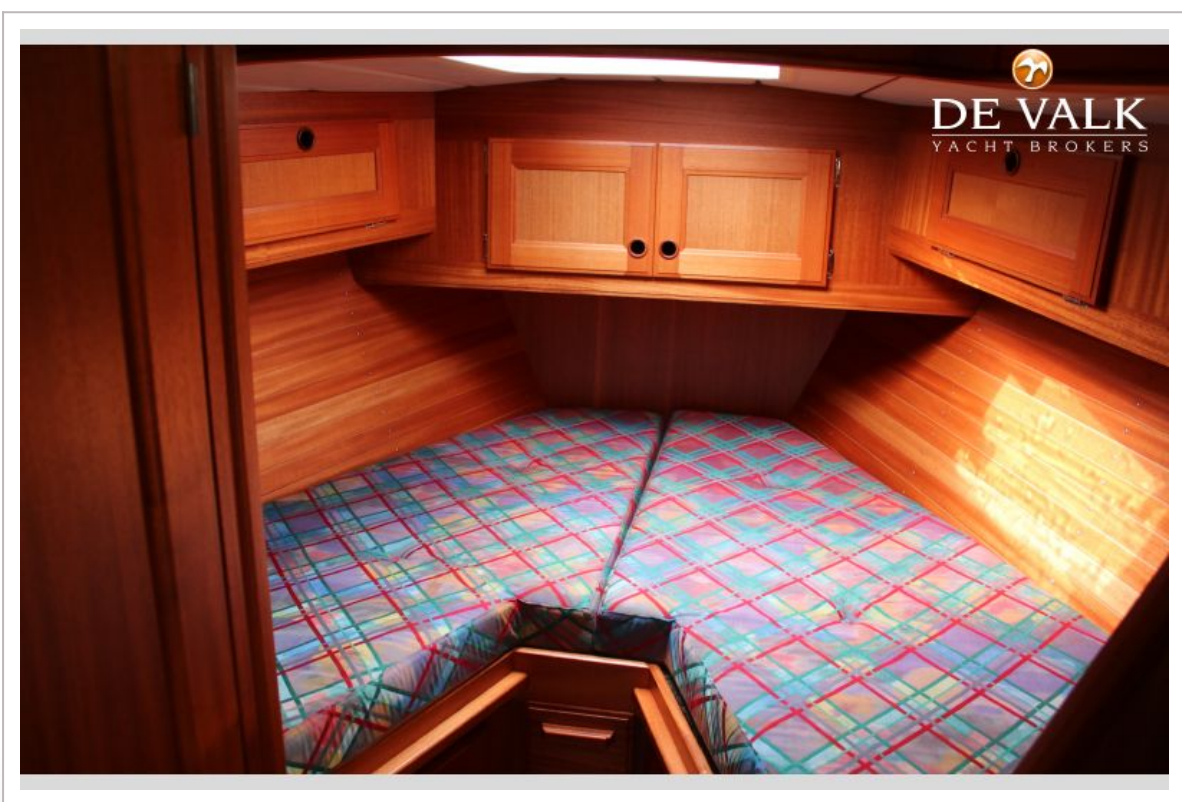
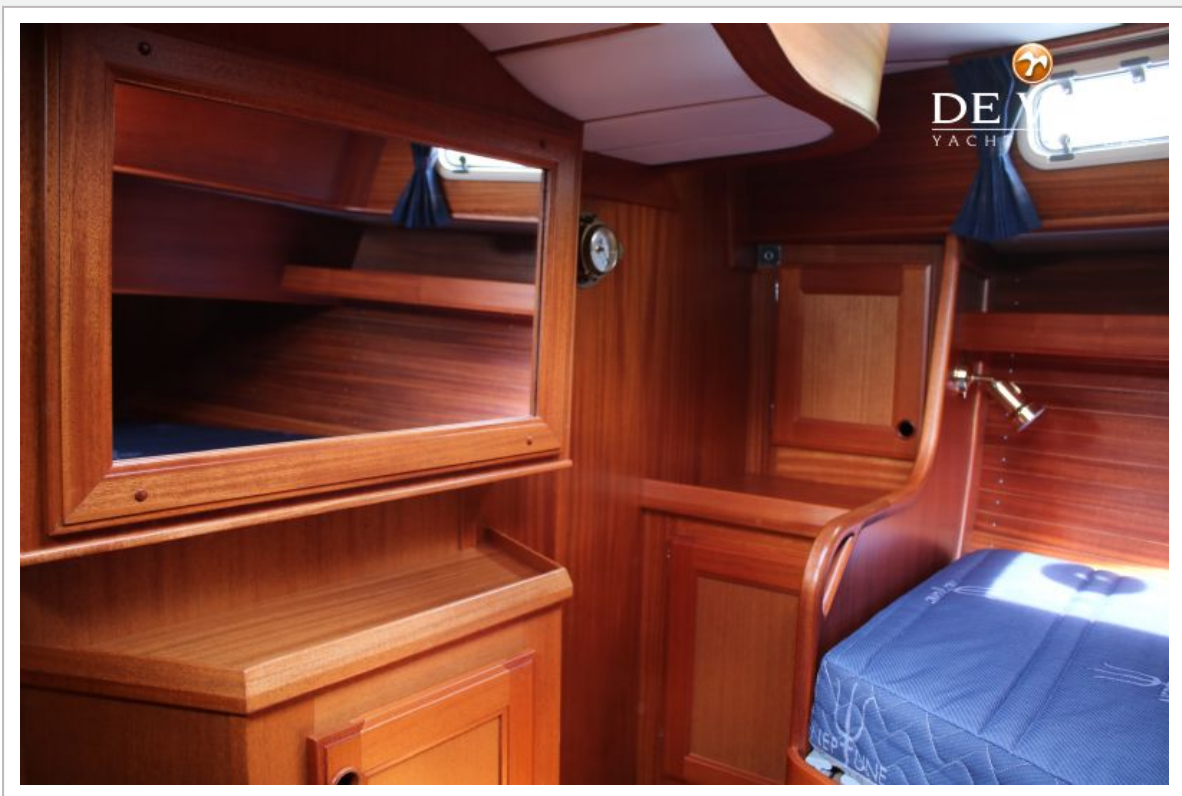
NAJAD 370



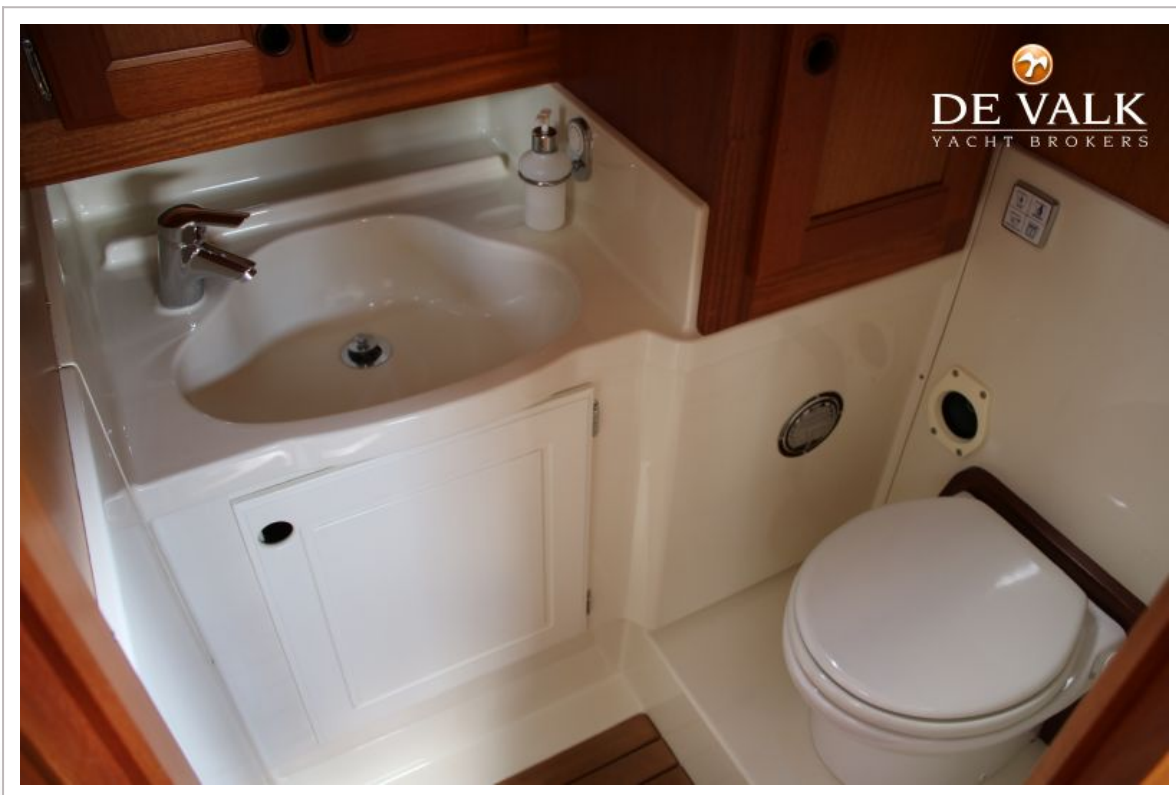
NAJAD 370



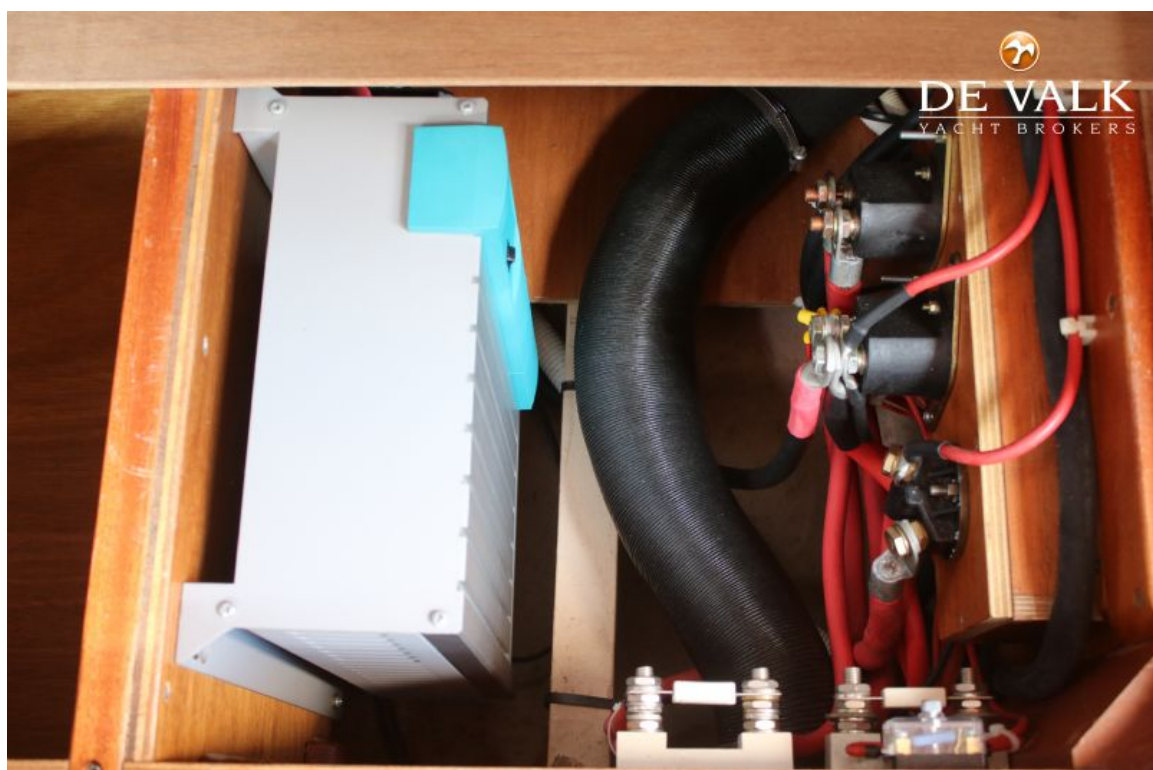
NAJAD 370



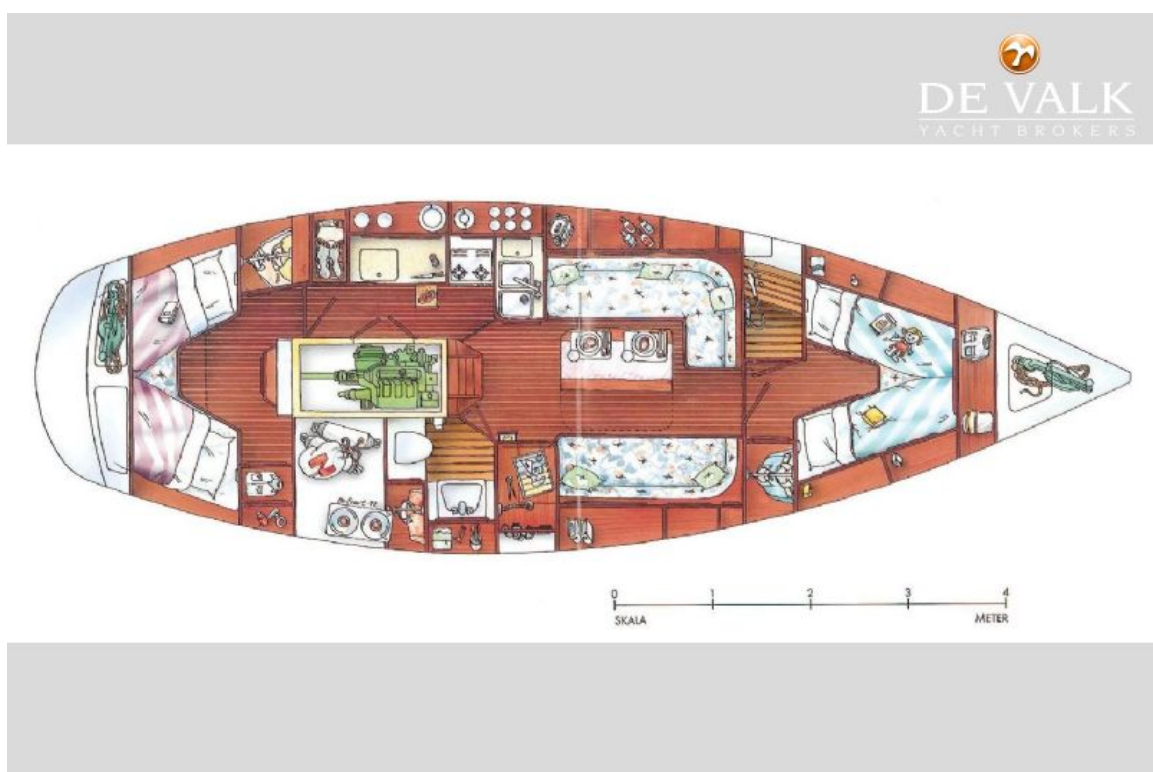
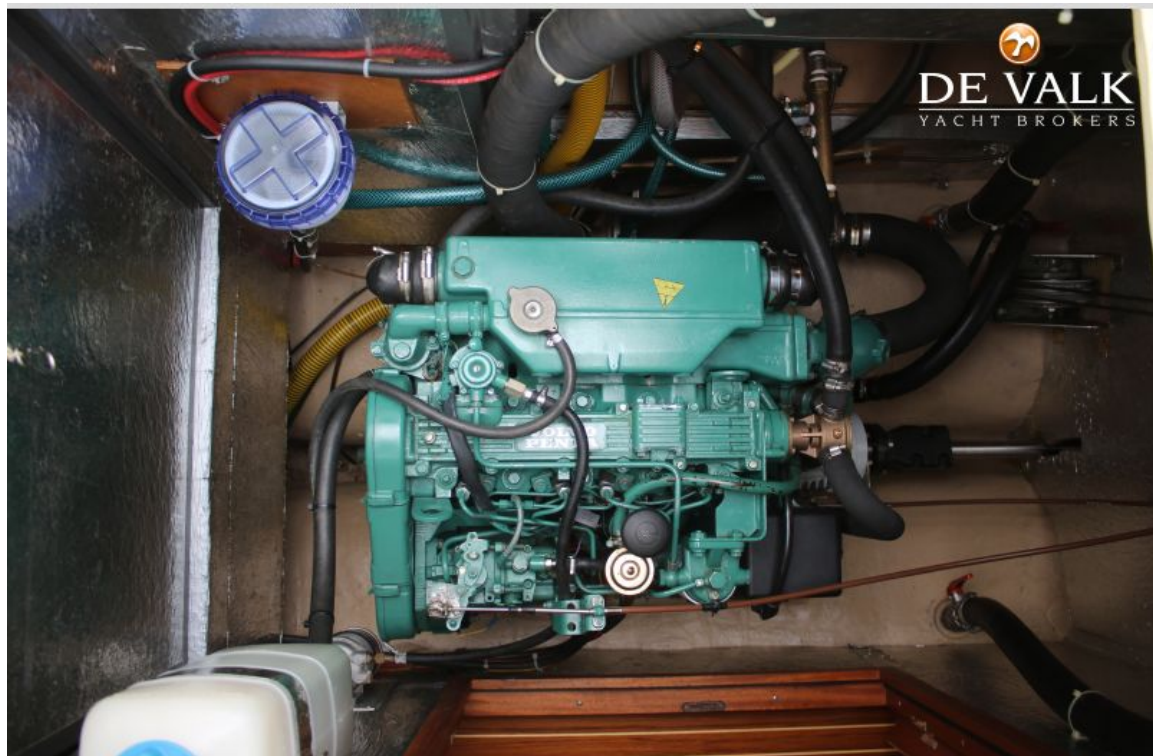
NAJAD 370



NAJAD 370



NAJAD 370



NAJAD 370

