



DE VALK
YACHT BROKERS



PILOTHOUSE TRAWLER YACHT



DE VALK
YACHT BROKERS

PILOTHOUSE TRAWLER YACHT

BROKER'S COMMENTS

This Pilothouse Trawler is a tough appearance on the water, equipped with many professional options makes her ideally suited for big trips to both the private and occupational boat owner. Underwater ship hull and just painted and the lower deck with an "Eco" Marine deck

Ger Bayens

SPECIFICATIONS

Dimensions	20.10 x 5.50 x 1.70 (m)	Builder	Jiangyin Co. Ltd./ Wuxi Dongfang Craft D
Built	2007	Cabins	4
Material	Steel	Berths	8
Engine(s)	1 x Volvo Penta D9 MH diesel	Hp/Kw	355.00 (hp), 260.93 (kw)
Asking price	sold (VAT)	Lying	contact sales office

CONTACT

Sales office	De Valk Sint Annaland B.V.	Telephone	+31 (0)166 601 000
Address	Koelhuisweg 4 4697 RM Sint Annaland NL	E-mail	sintannaland@devalk.nl

DISCLAIMER

These particulars are given in good faith as supplied but cannot be guaranteed.



PILOTHOUSE TRAWLER YACHT

GENERAL

Model	PILOTHOUSE TRAWLER YACHT
Type	motor yacht
LOA (m)	20,10
LWL (m)	17,20
Beam (m)	5,50
Draft (m)	1,70
Air draft (m)	4,30
Headroom (m)	2,00
Year built	2007
Builder	Jiangyin Co. Ltd./ Wuxi Dongfang Craft D
Country	China
Designer	Dutch Design
Displacement (t)	69
Hull material	steel
Hull colour	blue
Hull thickness (mm)	5
Hull shape	roundbilged
Superstructure material	steel
Superstructure (mm)	4
Deck plate thickness (mm)	5
Rubbing strake	stainless steel
Deck material	steel
Deck finish	teak-imitation Marinedeck (2013)
Superstructure deck finish	synthetic teak Marinedeck (2016)
Antifouling (year)	2016
Window frame	aluminum
Window material	double glazing
Portholes	aluminum
Insulation	airfoil
Mast can be lowered	hydraulic



PILOTHOUSE TRAWLER YACHT

Fuel tank (litre)	steel 9200 in 3 tanks
Fuel daytank (litre)	steel 300 + transfer pump
Freshwater tank (litre)	steel 4870 in 2 tanks
Blackwater tank (litre)	steel 1440
Blackwater tank extraction	deck extraction + pump
Wheel steering	hydraulic
Outside helm position	hydraulic
More info on paintwork	partly 2016
Extra info	Round bilged hull with bilgekeels and protected propellor frame and Becker-type rudder. Sturdy built with ample fuel and water supplies Trimballest watertank forward Indicated headway with mast lowered. has been built under Buro Veritas "Coastal Launch" specifications, presently not under these regulations anymore.

ACCOMMODATION

Cabins	4
Berths	8
Interior	mahogany
Floor	teak and holly
Pilot house	With L-shaped settee and access to outside helmposition.
Saloon	combined with galley
Headroom saloon (m)	2,00
Heating	central heating Webasto diesel (+ warm water boiler)
Air-conditioning	single cycle airco Cruissair 60000btu for all cabins
Galley	yes
Sink	stainless steel
Cooker	electric AEG induction 4 burner
Oven	AEG
Extractor	Elba
Microwave	Haier
Fridge	with freezer compartment Siemens + extra bottle fridge



PILOTHOUSE TRAWLER YACHT

Hot water system	220V Boiler + via Webasto cv heater
Water pressure system	electrical
Dishwasher	Bosch
Kettle	yes
Coffee maker	yes
Crockery	yes
Owners cabin	double bed
Bed length (m)	2,10 x 1,35
Wardrobe	yes
Bathroom	en suite
Toilet	en suite
Toilet system	electric
Wash basin	in the bathroom
Shower	en suite
Guest cabin 1	double bed 2,00 x 1,20m
Wardrobe	hanging and drawers
Bathroom	en suite
Toilet	en suite
Toilet system	electric
Wash basin	in the bathroom
Shower	en suite
Guest cabin 2	double bed 2,00 x 1,20m
Wardrobe	hanging and drawers
Bathroom	en suite
Toilet	en suite
Toilet system	electric
Wash basin	in the bathroom
Shower	en suite
Guest cabin 3	double bed 2,00 x 1,20m
Wardrobe	drawers
Toilet	shared
Toilet system	electric



PILOTHOUSE TRAWLER YACHT

Wash basin	in the bathroom
Shower	shared
Washing machine	combination dryer LG
Sauna	ensuite to ownerscabin

MACHINERY

No of engines	1
Make	Volvo Penta
Type	D9 MH
HP	355,00
kW	260,93
Fuel	diesel
Year installed	2007
Maximum speed (kn)	10
Cruising speed (kn)	8.00 / 1150 rpm
Consumption (l/hr)	30.00
Engine hours	837
Engine cooling system	freshwater heat exchanger
Drive	shaft
Engine controls	electrical
Gearbox	hydraulic Twin Disc
Bowthruster	electric Kalkman 30E 22kW 380v
Propeller type	fixed
Propeller blades	5
Propeller shaft material	stainless steel
Shaft lubrication	water
Electric bilge pump	complete bilge drain system 1 x (+ deckwash pump)
Bilge alarm	yes
Electrical installation	12/24/220/380v
Generator	wet exhaust Kohler 27kW 380v
Generator 2	wet exhaust Kohler 7kW 230v



PILOTHOUSE TRAWLER YACHT

Start battery	2 x 12v/200amp (2011)
Service battery	4 x 12v/200amp (2011)
Generator battery	1 x 12v/100amp (2011)
Battery monitor	complete batt-watch system
Battery charger	Victron; 24v/100amp, 24v/25amp, 12/30amp
Inverter	Victron 24v/3000watt
Shorepower	with cable
Insulation transformer	yes
Extra info	engine room cleaned, organized, bilge painted (2016)
Extra info	fore peak and rudder machine room painted

NAVIGATION

Electric compass	Raymarine ST40
Depth sounder	Furuno Sounder FCV667
Windset	Furuno
VHF	Simrad RS82 + Furuno HS-2003
Autopilot	Furuno Navpilot MCU600
Rudder angle indicator	VDO
Radar	Furuno 1832 4kW 36nm
GPS	Furuno GP-32
Radar/plotter	Furuno Navnet 3D MFD12
Navtex	Furuno NX-300
Electronic chart(s)	yes
AIS receiver	1 x
Camera	for engine room and aft looking
Searchlight	with remote Jabsco ITT

EQUIPMENT

Cockpit cushions	yes
Cockpit table	yes
Boarding ladder	yes



PILOTHOUSE TRAWLER YACHT

Deck shower	yes
Anchor	Pool 80 kg
Anchor chain	galvinised steel 165 mtr 12,5mm
Windlass	Muir HR2400 380v
Capstan	Combined anchor wich
Deck wash	2 x pump
Dinghy	rigid inflatable Brig centre console
Outboard	Yamaha 30hp 4-stroke
Deck crane	hydraulic
Sea railing	stainless steel
Railing side opening gates	yes
Life raft	container
Life raft (pers)	10 person
Last life raft survey	2011
Lifebuoy	2 x
Wiper	5 x Excalto
Window heating	yes
Horn	air pressure
Fenders	yes
Mooring lines	yes
TV	salon and wheelhouse 2 x
TV receiver	Digitenne (NL)
DVD player	combined with TV
Fire extinguisher	in all cabins
Extinguisher in engine room	CO2 system



PILOTHOUSE TRAWLER YACHT



PILOTHOUSE TRAWLER YACHT



PILOTHOUSE TRAWLER YACHT



PILOTHOUSE TRAWLER YACHT



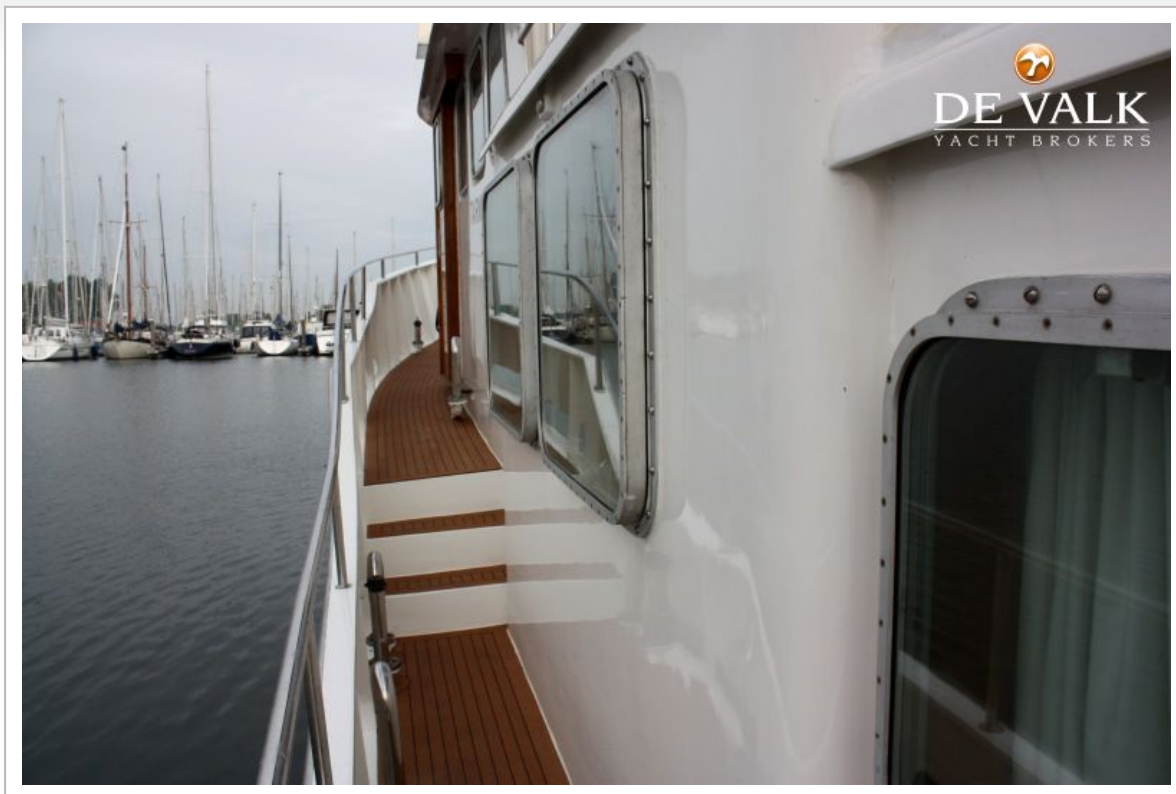
PILOTHOUSE TRAWLER YACHT



PILOTHOUSE TRAWLER YACHT



PILOTHOUSE TRAWLER YACHT



PILOTHOUSE TRAWLER YACHT



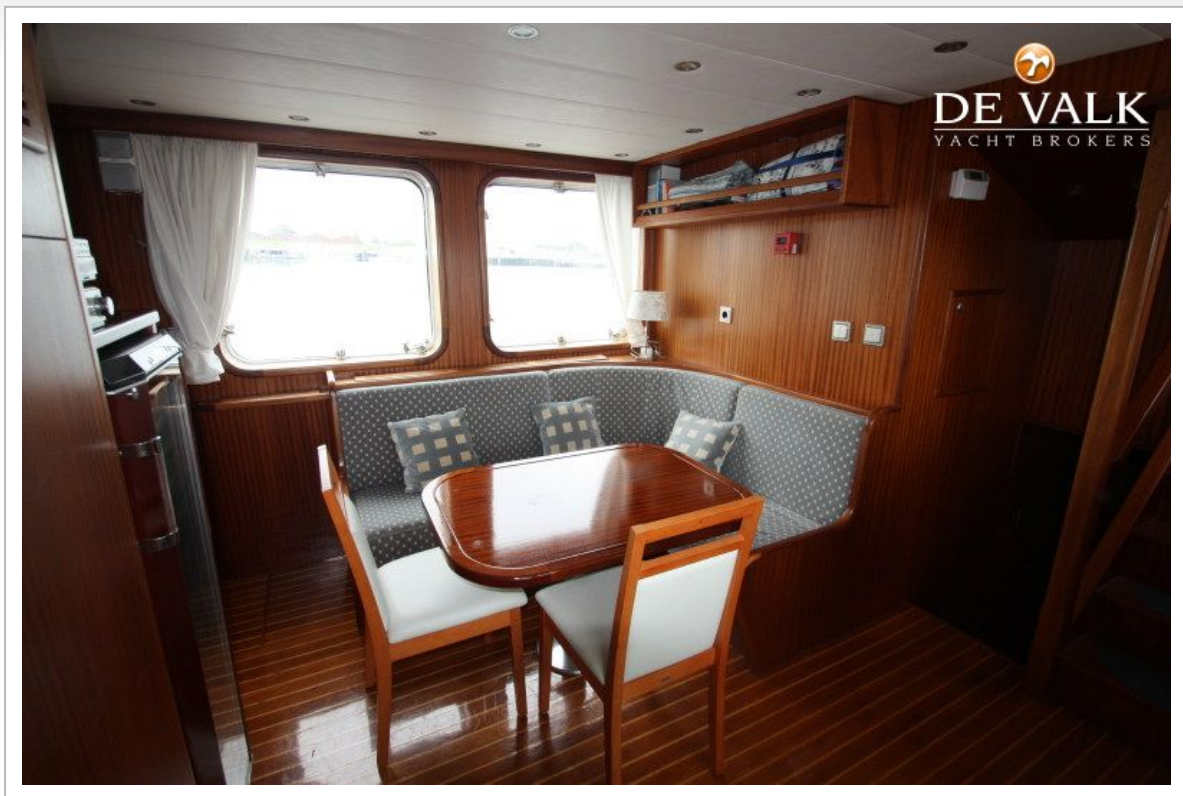
PILOTHOUSE TRAWLER YACHT



PILOTHOUSE TRAWLER YACHT



PILOTHOUSE TRAWLER YACHT



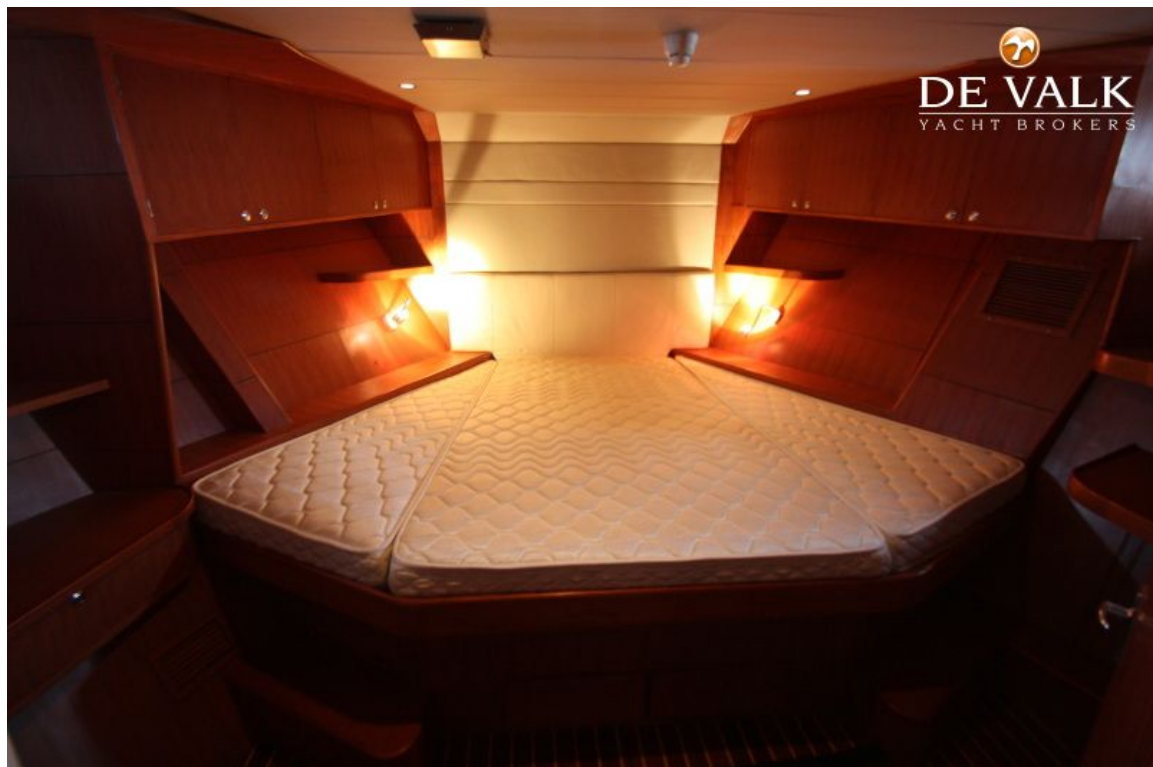
PILOTHOUSE TRAWLER YACHT



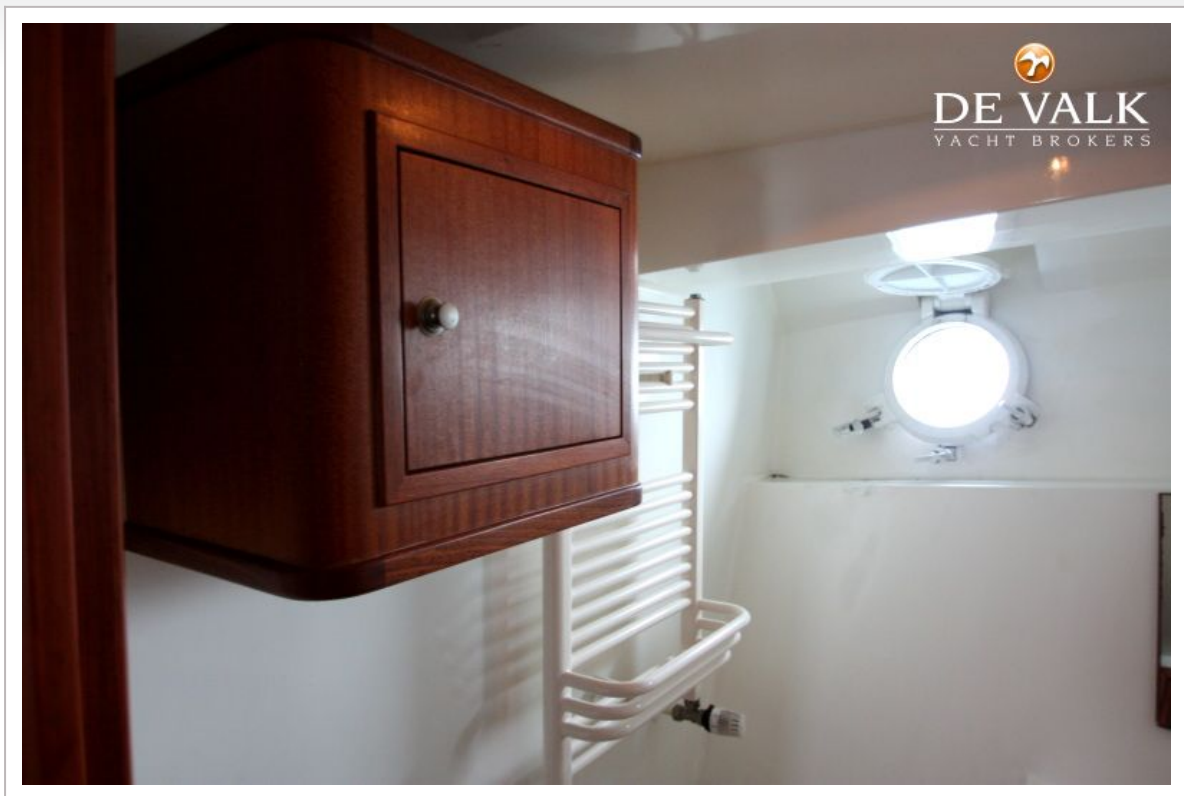
PILOTHOUSE TRAWLER YACHT



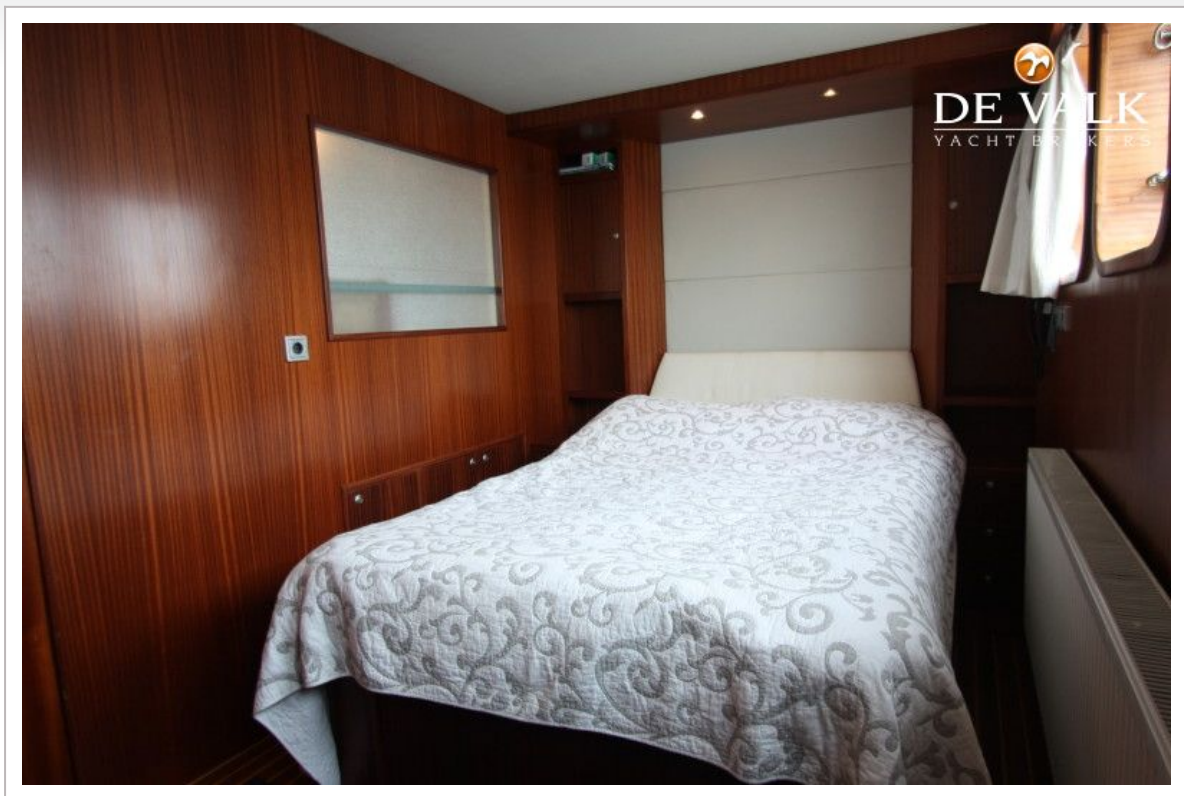
PILOTHOUSE TRAWLER YACHT



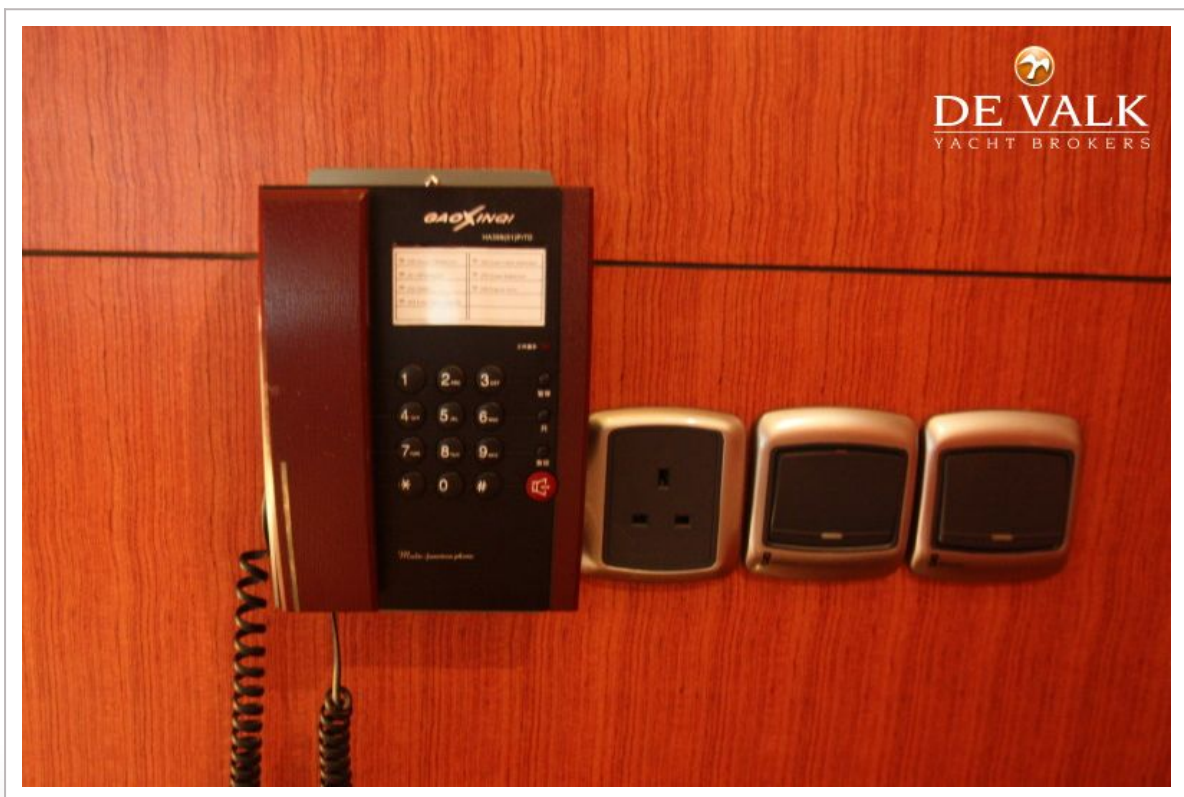
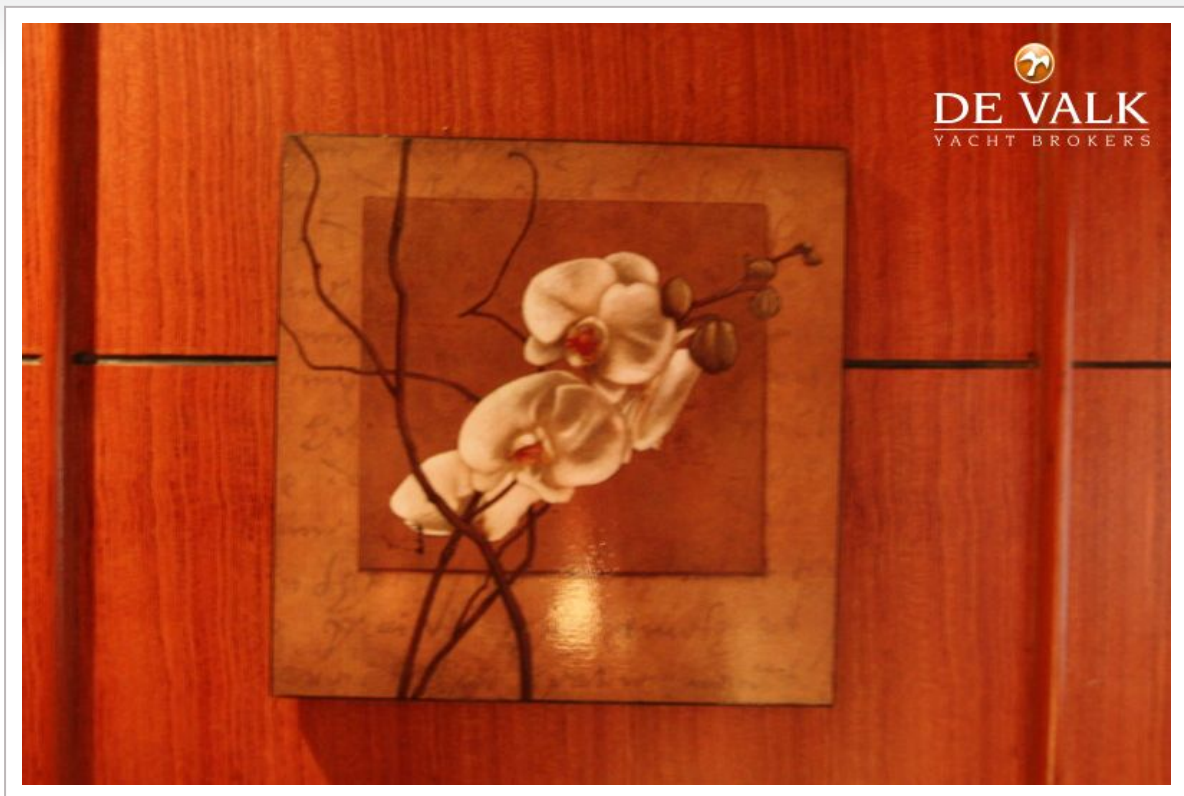
PILOTHOUSE TRAWLER YACHT



PILOTHOUSE TRAWLER YACHT



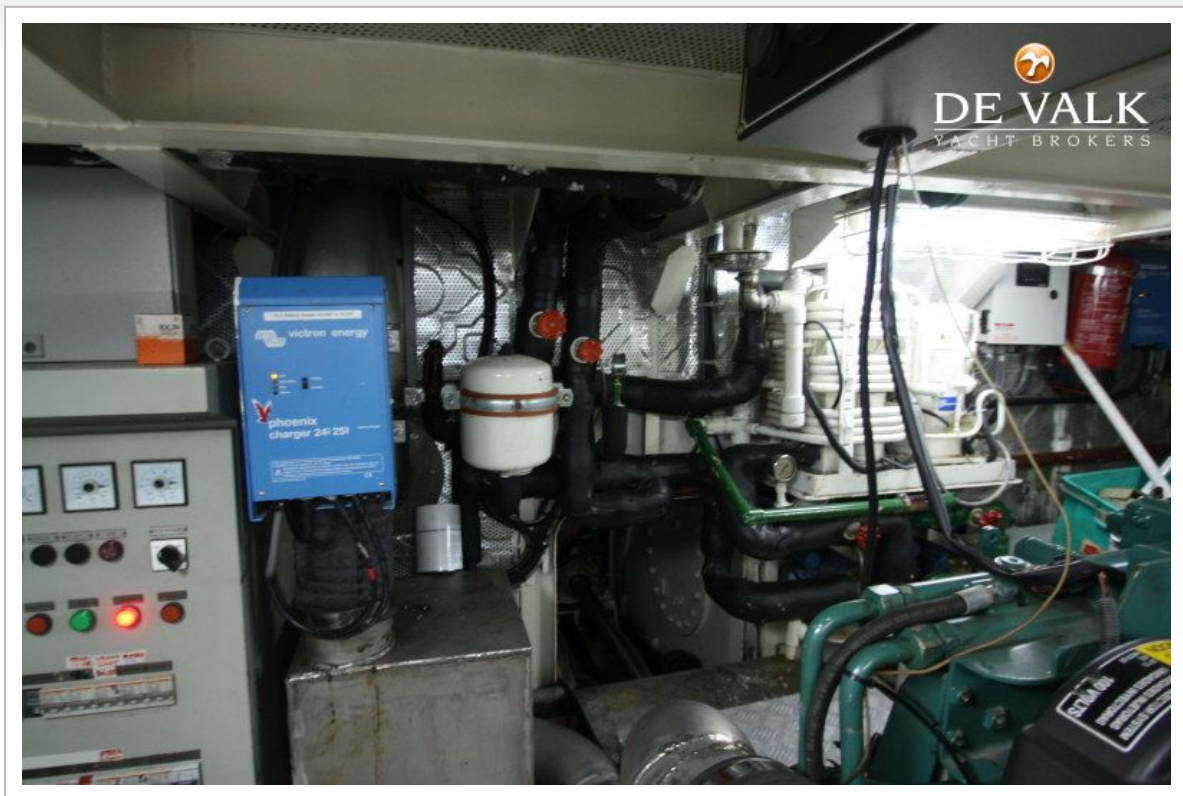
PILOTHOUSE TRAWLER YACHT



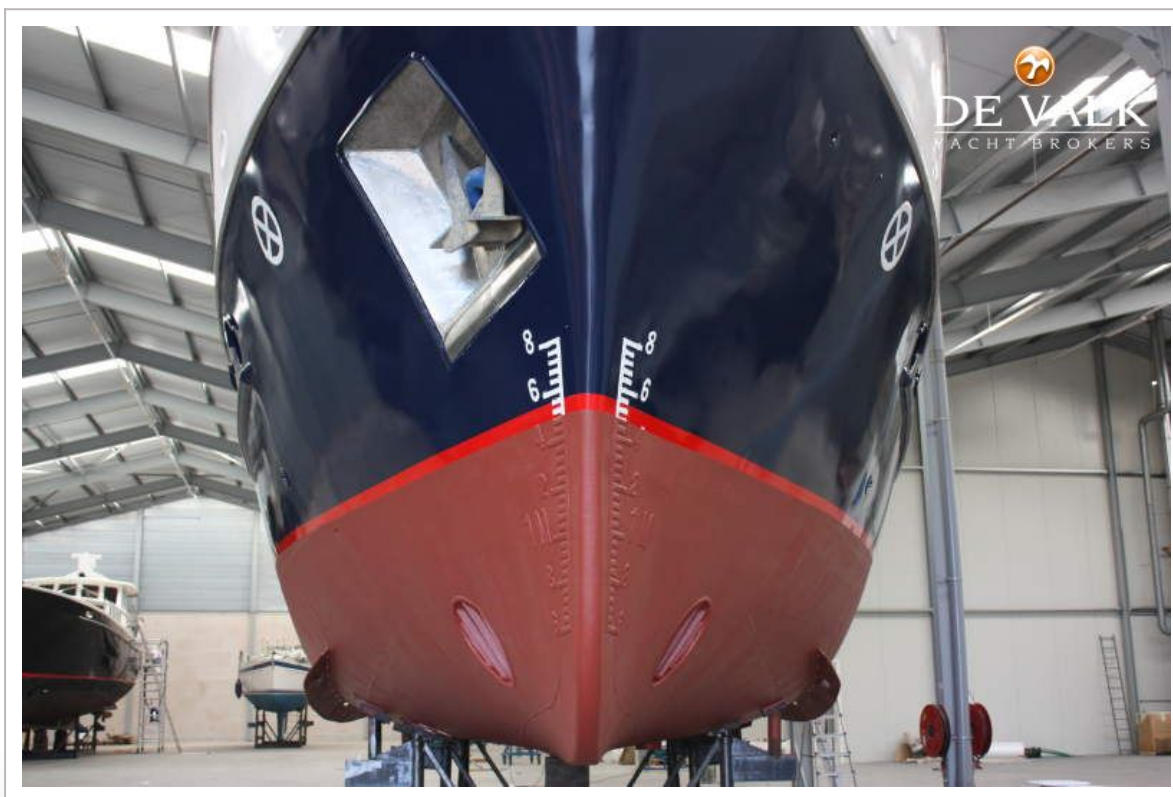
PILOTHOUSE TRAWLER YACHT



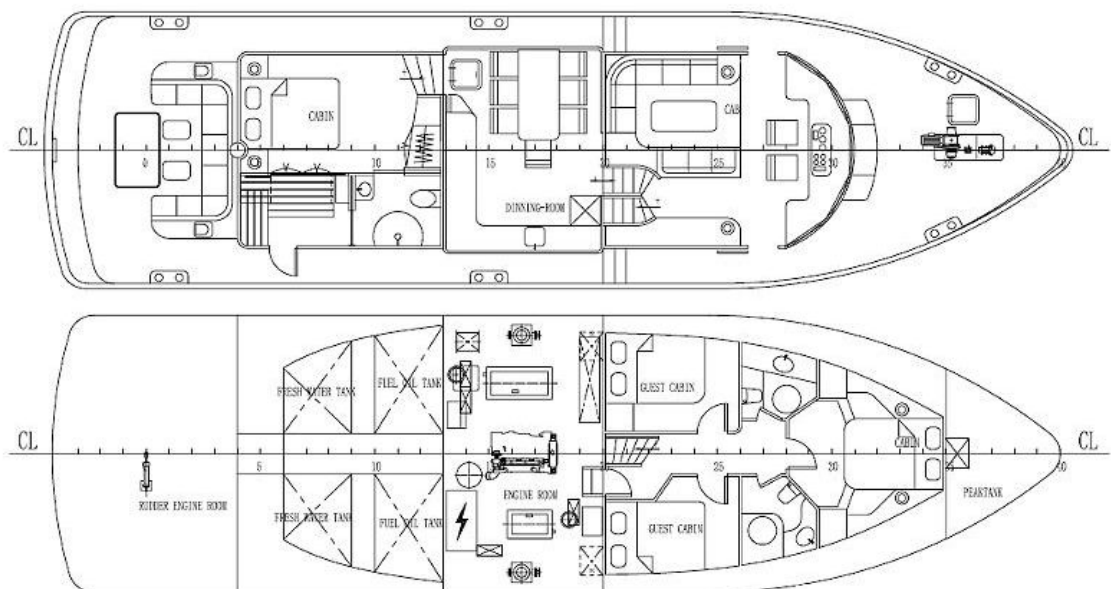
PILOTHOUSE TRAWLER YACHT



PILOTHOUSE TRAWLER YACHT



PILOTHOUSE TRAWLER YACHT



PILOTHOUSE TRAWLER YACHT

