



DE VALK
YACHT BROKERS



EXPEDITION VESSEL LONG RANGE 29M



DE VALK
YACHT BROKERS

EXPEDITION VESSEL LONG RANGE 29M

BROKER'S COMMENTS

"Tarmo" is a former Finnish expedition vessel from 1963 that was rebuilt in 1997. She has 14 berths in 7 cabins and can be used for a variety of purposes, such as charter, expedition, fishing, etc. She comes with a recent CVO (inland certificate) and is regularly maintained by her Dutch professional skipper/owner. With her shaft drive and powerful bow thruster she can be handled by an experienced crew of two. Make an appointment with De Valk Zeeland for a viewing of this special expedition vessel.

Nick Lanting

SPECIFICATIONS

Dimensions	28.80 x 6.70 x 2.95 (m)	Builder	Valmet Shipyard Turku
Built	1963	Cabins	7
Material	Steel	Berths	16
Engine(s)	1 x Caterpillar 3408B diesel	Hp/Kw	450.00 (hp), 331.20 (kw)
Asking price	sold (VAT)	Lying	elsewhere / Not at sales office

CONTACT

Sales office	De Valk Sint Annaland B.V.	Telephone	+31 (0)166 601 000
Address	Koelhuisweg 4 4697 RM Sint Annaland NL	E-mail	sintannaland@devalk.nl

DISCLAIMER

These particulars are given in good faith as supplied but cannot be guaranteed.



EXPEDITION VESSEL LONG RANGE 29M

GENERAL

Model	EXPEDITION VESSEL LONG RANGE 29M
Type	motor yacht
LOA (m)	28,80
LWL (m)	24,00
Beam (m)	6,70
Draft (m)	2,95
Air draft (m)	8,00
Headroom (m)	1,90
Year built	1963
Launched	1997 (after rebuild)
Builder	Valmet Shipyard Turku
Country	Finland
Designer	Finnish Government
Displacement (t)	165
Ballast (tonnes)	5000 liter ballast tank
CE norm	NA
Hull material	steel
Hull colour	white
Hull thickness (mm)	8
Hull shape	round-bilged
Superstructure material	steel
Superstructure (mm)	6
Deck plate thickness (mm)	6
Rubbing strake	steel
Deck material	steel
Deck finish	cork Stazo Marinedeck 2000
Superstructure deck finish	paint
Cockpit deck finish	paint
Antifouling (year)	11/2023
Window frame	aluminium



EXPEDITION VESSEL LONG RANGE 29M

Window material	glass
Portholes	aluminium
Insulation	rockwool Aluminium sheeted rockwool
Flybridge	yes
Mast can be lowered	hydraulic 380 V hydropack
Fuel tank (litre)	steel 12600 in three tanks
Level indicator (fuel tank)	Can be checked with a dipstick, also alarm when tank is full
Fuel daytank (litre)	steel 900
Level indicator (daytank)	Gauge glass on the tank
Freshwater tank (litre)	steel 20000
Blackwater tank (litre)	steel 2000
Level indicator (blackwater)	yes
Blackwater tank extraction	pump Electric pump. There is also an electric emergency pump
Greywater tank (litre)	steel 3700
Wheel steering	hydraulic Tenfjord with joystick
Inside helm position	yes
Outside helm position	yes
Flybridge helm position	hydraulic
More info on paintwork	Hempel 1997, annually maintained, high wear parts repainted

ACCOMMODATION

Cabins	7
Berths	16
Interior	nut
Floor	cork
Aft deck	yes
Pilot house	yes
Saloon	yes
Headroom saloon (m)	1,90
Heating	central heating Janna Kettle (1983), 17-35kW electric, 29-46kW diesel



EXPEDITION VESSEL LONG RANGE 29M

Heating 2	electric 220V Noirot Electronics heater in the steering house
Navigation center	yes
Chart table	yes
Dinette	2 x
Opening door to aft deck	yes
Galley	yes
Countertop	wood
Sink	stainless steel 1 x
Cooker	electric 4-burner
Oven	yes
Extractor	yes
Microwave	yes
Fridge	1 x large cool room with a 380 V Eco Coils & Coolers compressor
Freezer	1 x Liebherr Comfort 220 V & 1 x large freezer room with a 380 V
Hot water system	on central heating
Water pressure system	electrical
Crockery	yes
Owners cabin	double bed In the aft - Headroom 1,93 m
Bed length (m)	1,95 x 1,40
Wardrobe	hanging/drawers/shelves
Bathroom	shared Headroom 1,90 m
Toilet	shared In the aft bathroom
Toilet system	manual Watercloset
Wash basin	in the bathroom
Shower	shared In the aft bathroom - headroom 1,89 m
Guest cabin 1	bunk bed Aft cabin - Headroom 1,90 m
Bed length (m)	1,95 x 0,70 (2 x)
Wardrobe	hanging/drawers/shelves
Bathroom	shared Headroom 1,90 m
Toilet	shared In the aft bathroom
Toilet system	yes



EXPEDITION VESSEL LONG RANGE 29M

Wash basin	in the bathroom
Shower	shared In the aft bathroom - headroom 1,89 m
Extra info	Fixed desk
Guest cabin 2	double bed Port side - Headroom 1,98 m
Bed length (m)	1,95 x 1,30
Wardrobe	hanging/drawers/shelves
Bathroom	en suite Headroom 2,00 m
Toilet	en suite In the bathroom
Toilet system	manual Water closet
Wash basin	in the bathroom
Shower	en suite In the bathroom - Headroom 1,86 m
Guest cabin 3	double bed Starboard - Headroom 1,91 m
Bed length (m)	1,90 x 1,30
Wardrobe	hanging/drawers/shelves
Bathroom	Separate - on starboard and shared - Headroom 2,00 m
Toilet	shared Separate - in bathroom on starboard
Wash basin	in the bathroom On starboard and shared
Shower	en suite Headroom 1,80 m
Guest cabin 4	double bed Port side - headroom 2,00 m
Bed length (m)	1,95 x 1,30
Wardrobe	hanging/drawers/shelves
Bathroom	Separate - on starboard and shared - Headroom 2,00 m
Toilet	shared Separate - in bathroom on starboard
Wash basin	in the bathroom On starboard and shared
Shower	shared Separate - in bathroom on starboard - Headroom 1,86
Crew cabin(s)	1x cabin on starboard (headroom 2,00 m) with bunkbed (1,96 x 0,7
Bathroom (crew)	Separate - on starboard and shared - Headroom 2,00 m
Toilet (crew)	Separate - in bathroom on starboard and shared
Wash basin	in the bathroom On starboard and shared
Shower (crew)	Separate - in bathroom on starboard and shared - Headroom 1,86 m



EXPEDITION VESSEL LONG RANGE 29M

Washing machine	Zerowatt 220 Volt (in the bathroom on starboard)
Sauna	On starboard on aftdeck
Extra info	Large food storage aft with cooling and freezing compartment
Extra info	Built-in Electro Safe - Laser system.

MACHINERY

No of engines	1
Make	Caterpillar
Type	3408B
HP	450
kW	331.20
Fuel	diesel
Year installed	1999
Year of overhaul	Engine was built in 1989, overhauled in 1999 and then installed
Maximum speed (kn)	11
Cruising speed (kn)	9
Consumption (l/hr)	30
Range (nm)	3000
Engine hours	1300
Engine cooling system	closed keelcooling
Drive	shaft
Engine controls	pneumatic Mannes Mann Rexroth Pneumatik
Gearbox	hydraulic Reintjes 4.481:1
Bowthruster	electric 380 Volt 40 Hp Kalkman (1997)
Exhaust	dry
Thrust bearing	yes
Propeller type	fixed
Propeller blades	3
Propeller shaft material	stainless steel
Shaft lubrication	oilbath
Electric bilge pump	380 V with manifold, also for deck wash and fire fighting



EXPEDITION VESSEL LONG RANGE 29M

Bilge alarm	yes
Electrical installation	12 V, 24 V, 230 V, 380 V (1997)
Generator	dry exhaust 2x Perkins 4.236/Stamford 55kVA-380V-40kW-1500rpm in silentboxes
Running hours generator	2000
Generator 2	dry exhaust Yanmar 10 kVA 1500 rpm
Batteries	4x (emergency light batteries in box on Flybridge - new 2022)
Start battery	1 x
Service battery	10 x
Generator battery	3 x
Battery monitor	yes
Inverter	Mastervolt Mass Sine 24V/220V/1500W
Battery charger/inverter	Mastervolt Mass Combi 24V/2600W/60A
Diode battery combiners	yes
Shorepower	with cable
Insulation transformer	yes
Extra info	yes

NAVIGATION

Compass	C. Plath
Electric compass	yes
Depth sounder	Furuno Colour Video Sounder
Forw. looking depth sounder	Furuno Colour Video Sounder
Log	yes
Windset	In Lowrance HDS12M
Fish finder	Furuno Colour Video Sounder
VHF	1 x Shipmate RS8300 & 1 x Debeg 6348
Autopilot	Simrad FU 80
Rudder angle indicator	Wema
Radar	Furuno
GPS	Furuno GP-32 GPS/WAAS



EXPEDITION VESSEL LONG RANGE 29M

Plotter/GPS	Lowrance HDS12M
AIS transceiver	EM-Track A100
Navigation lights	yes
Searchlight	yes

EQUIPMENT

Fixed windscreen	yes
Storm blinds	For the portholes
Anchor	Clipper 350
Anchor chain	120 m
Anchor 2	Clipper 350
Anchor chain	150 m
Windlass	electrical 380 Volt oilbath
Capstan	On the windlass
Deck wash	With sea water
Dinghy	rigid hull Terhi 6 persons GRP Dinghy with a cover
Deck crane	electric
Sea railing	steel
Grab rail (superstructure)	steel
Railing side opening gates	yes
Lifebuoy	5 x
Wiper	4 x
Horn	air pressure
Fenders	yes
Mooring lines	yes
Spare parts	yes
Tools	yes
TV	In the saloon
Radio-cd player	Old HiFi stereo
DVD player	yes
Speakers in salon	yes



EXPEDITION VESSEL LONG RANGE 29M

Clock - barometer	yes
Fire extinguisher	yes
Latest extinguisher survey	2023
Extinguisher in engine room	yes
Auto extinguisher system	yes



EXPEDITION VESSEL LONG RANGE 29M



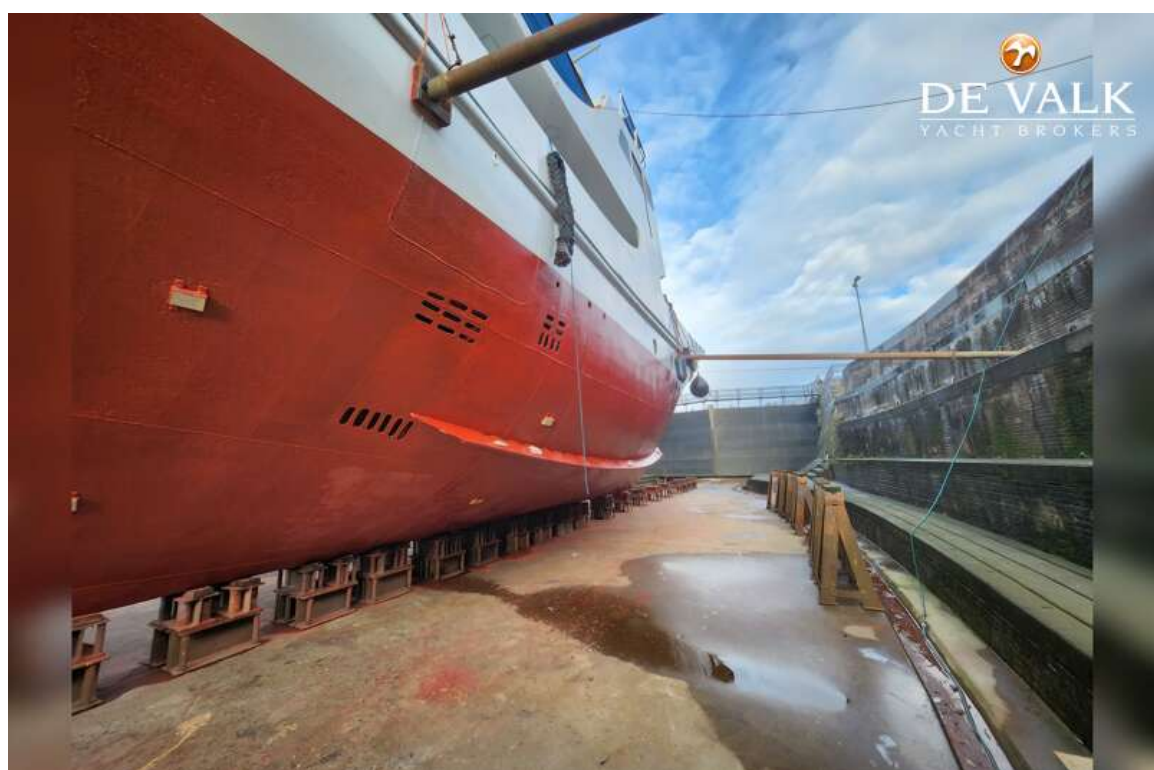
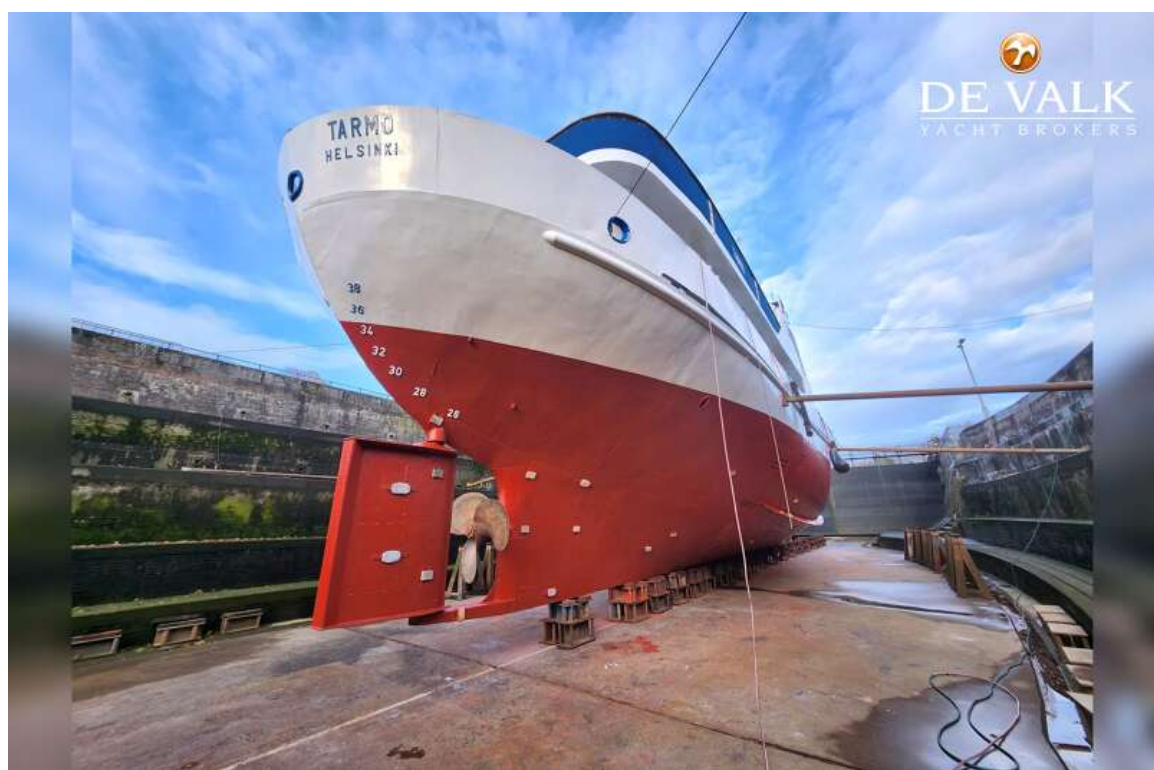
EXPEDITION VESSEL LONG RANGE 29M



EXPEDITION VESSEL LONG RANGE 29M



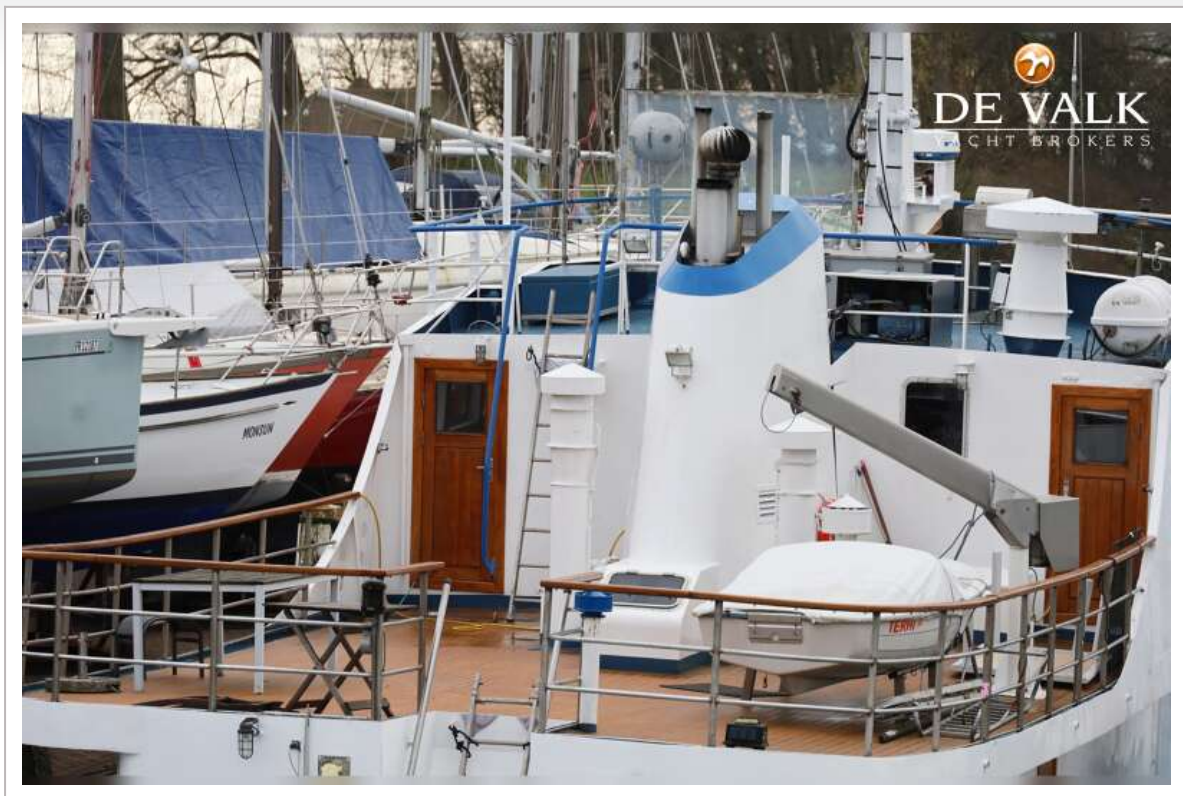
EXPEDITION VESSEL LONG RANGE 29M



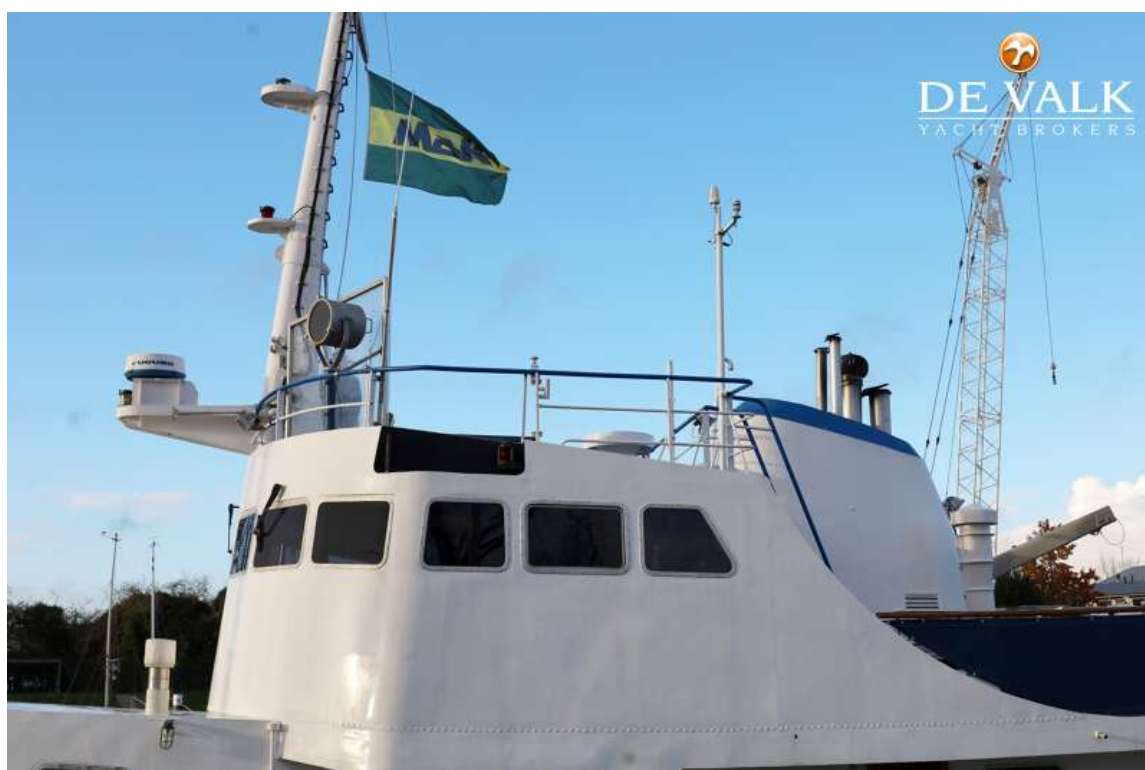
EXPEDITION VESSEL LONG RANGE 29M



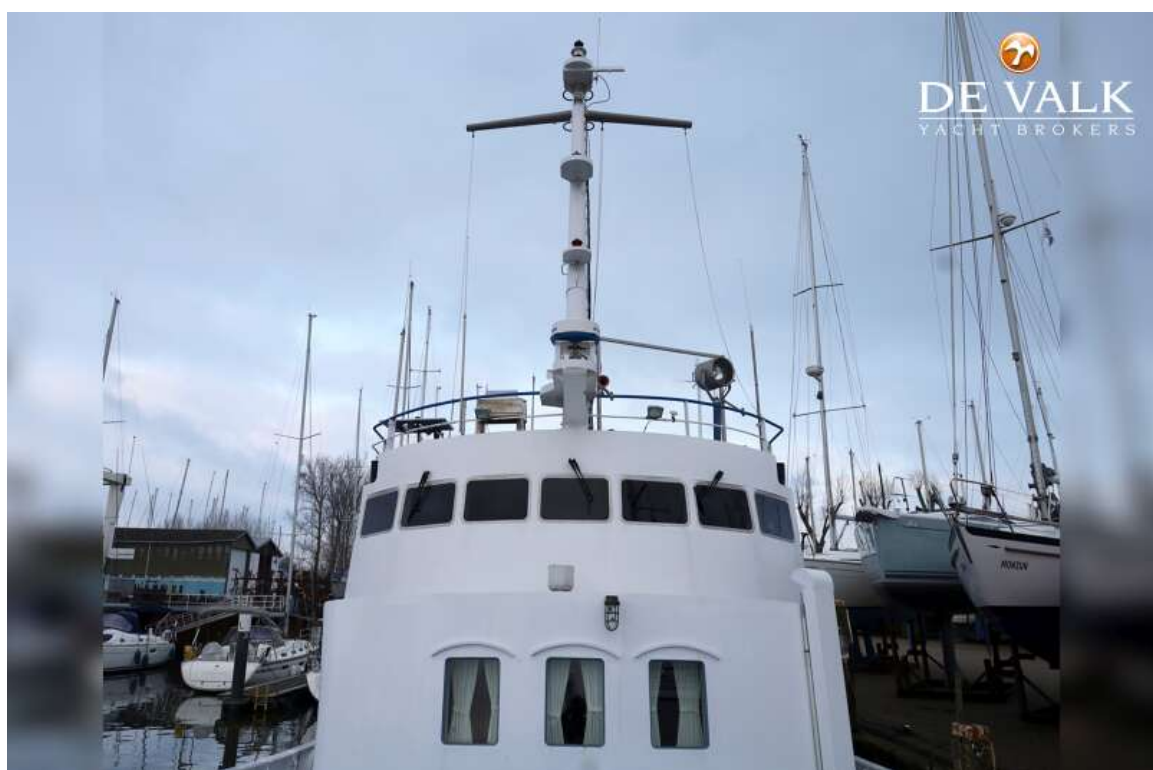
EXPEDITION VESSEL LONG RANGE 29M



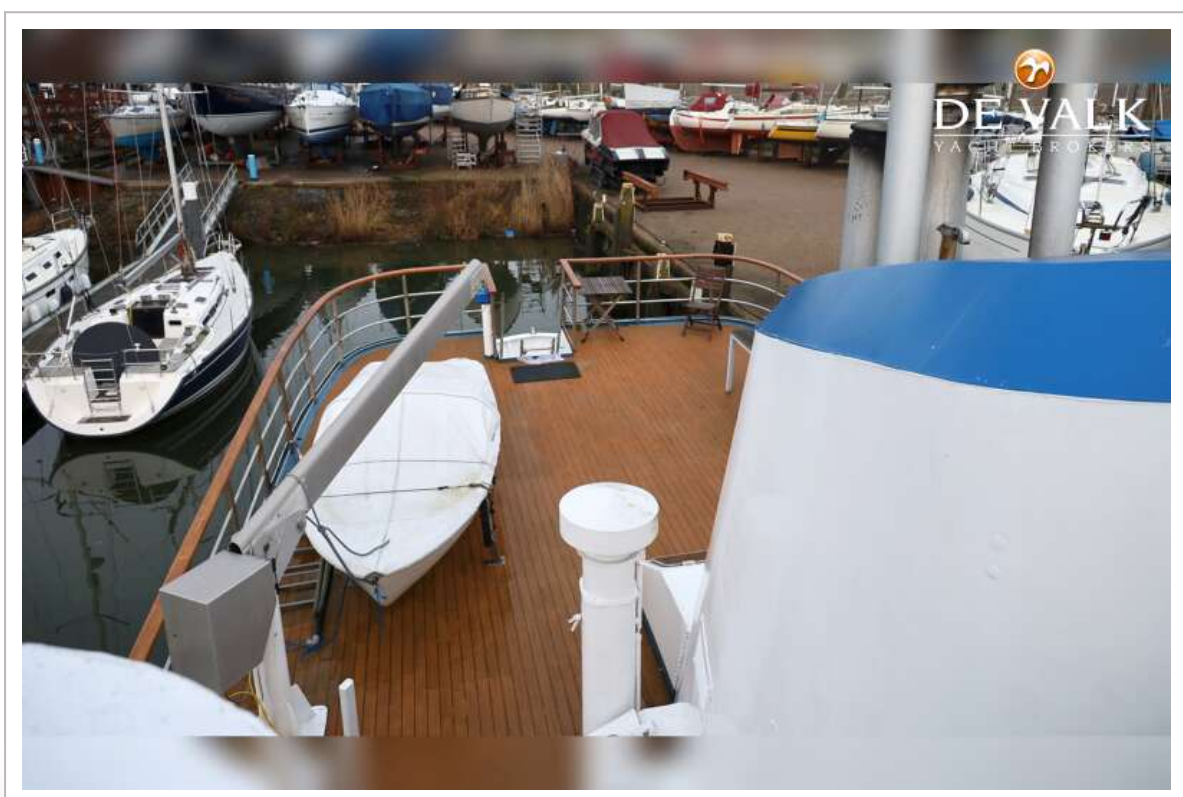
EXPEDITION VESSEL LONG RANGE 29M



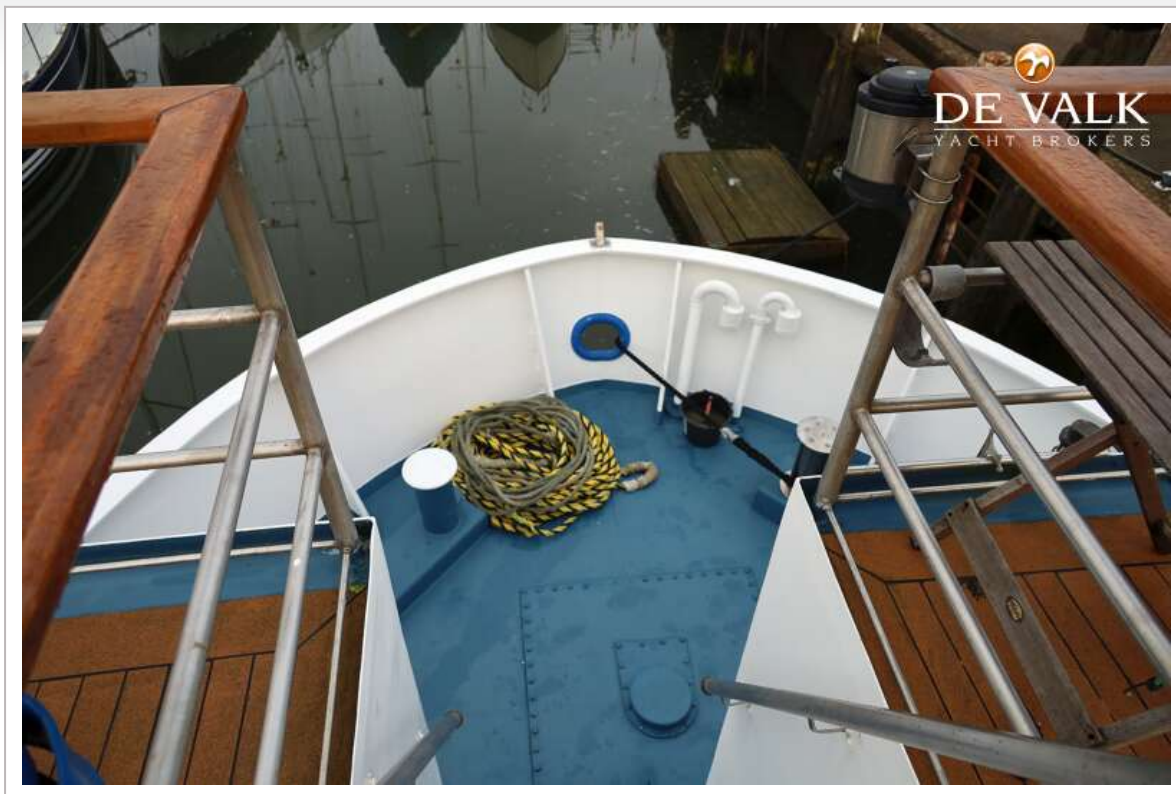
EXPEDITION VESSEL LONG RANGE 29M



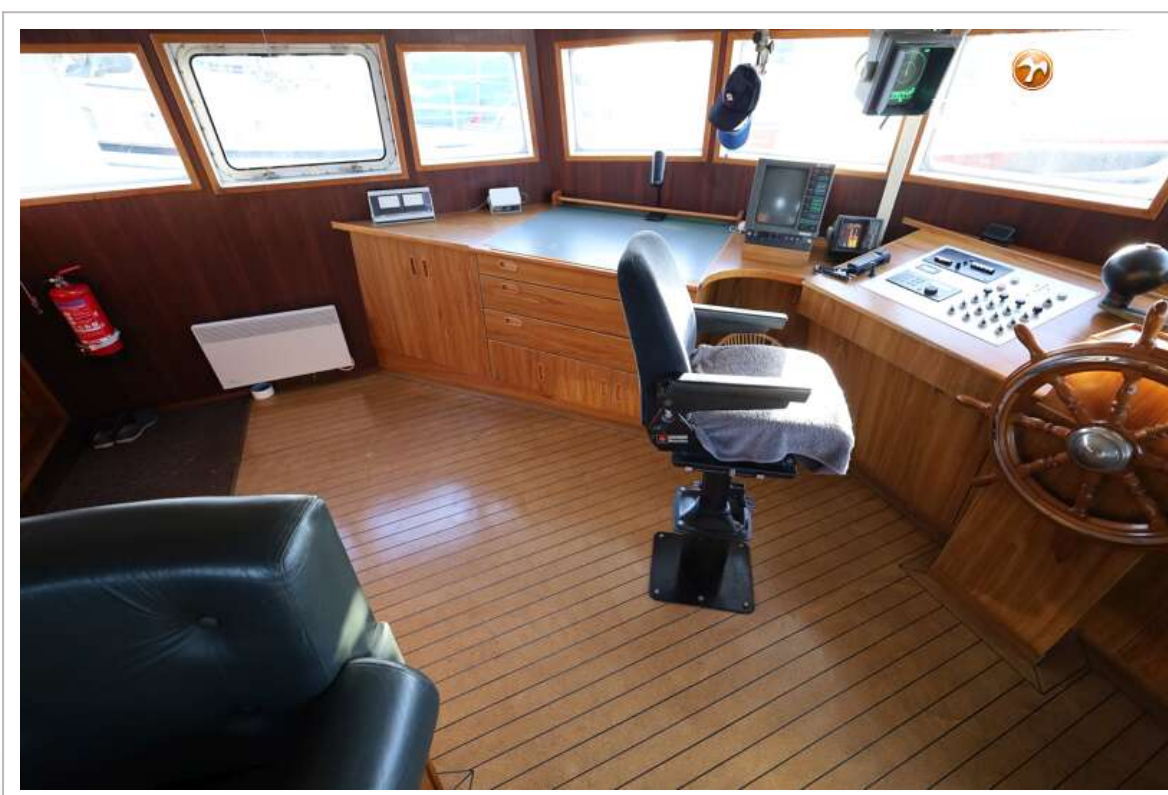
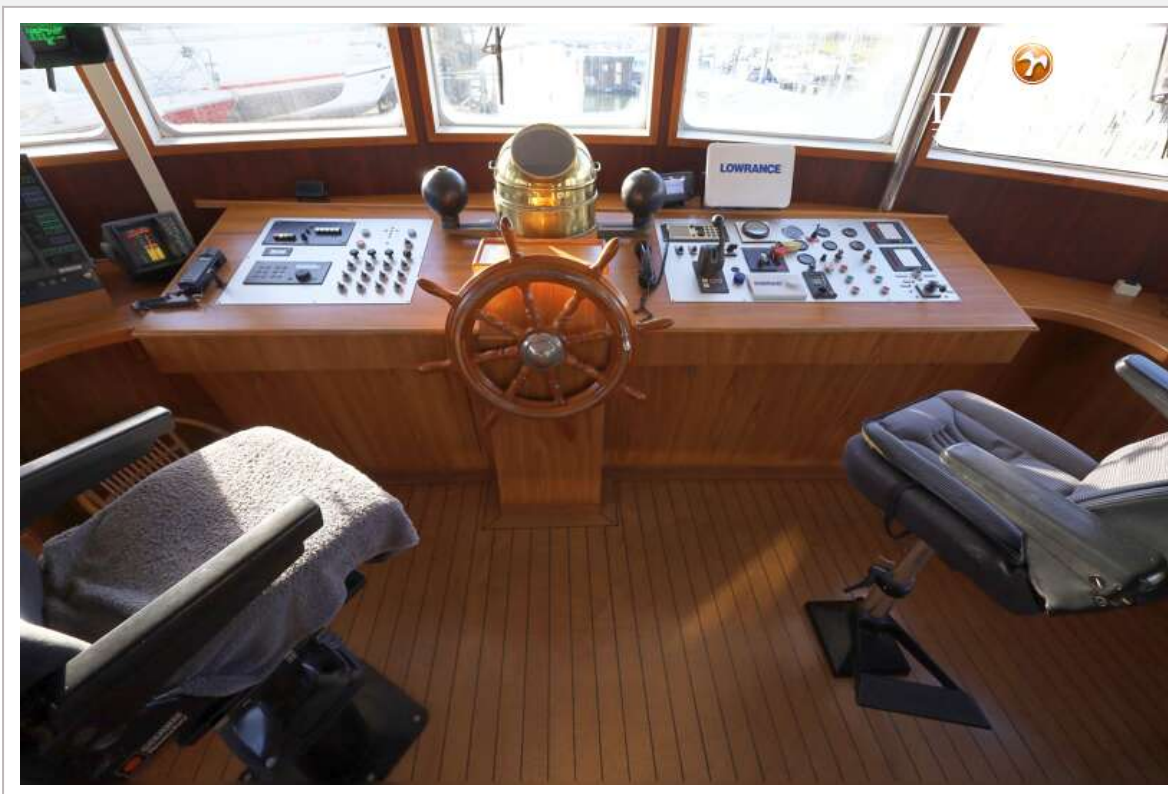
EXPEDITION VESSEL LONG RANGE 29M



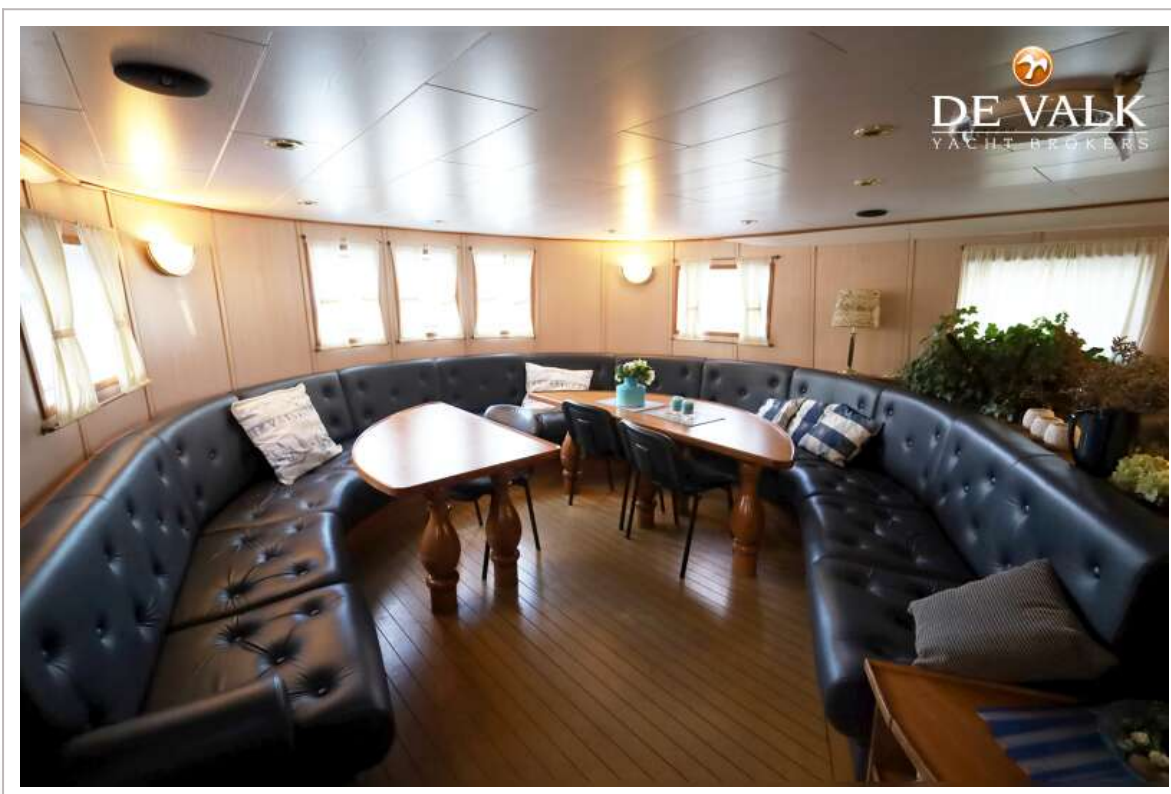
EXPEDITION VESSEL LONG RANGE 29M



EXPEDITION VESSEL LONG RANGE 29M



EXPEDITION VESSEL LONG RANGE 29M



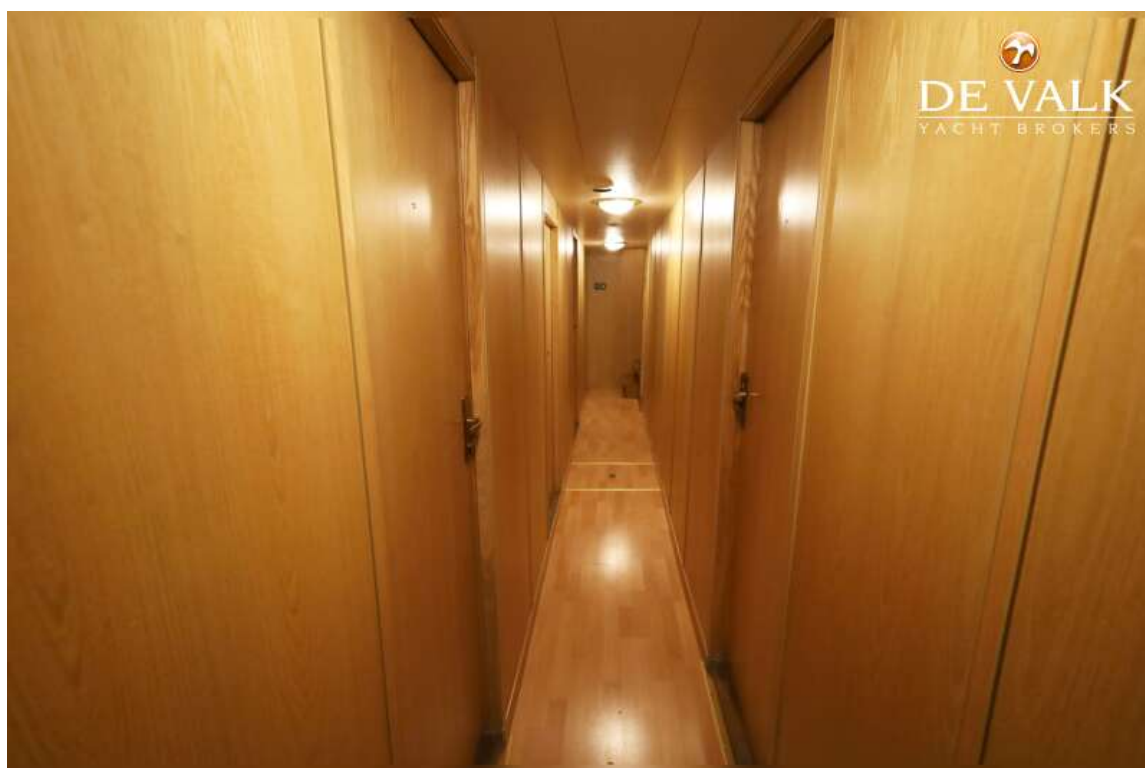
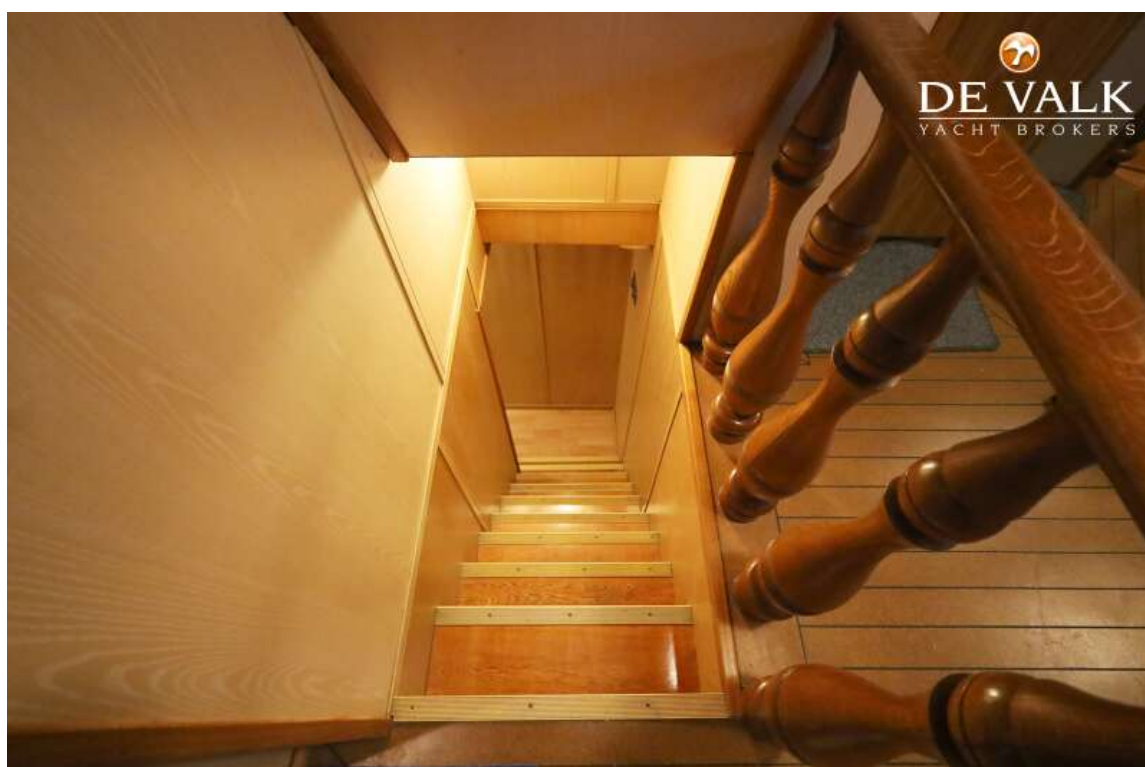
EXPEDITION VESSEL LONG RANGE 29M



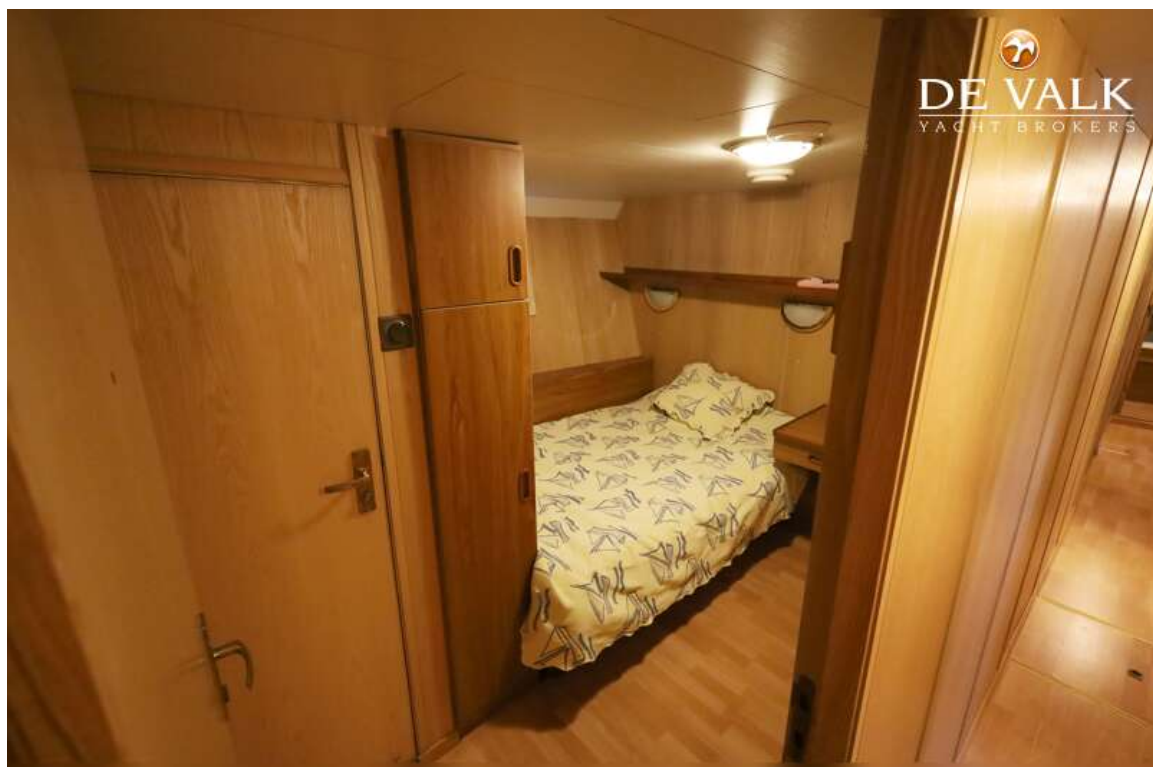
EXPEDITION VESSEL LONG RANGE 29M



EXPEDITION VESSEL LONG RANGE 29M



EXPEDITION VESSEL LONG RANGE 29M



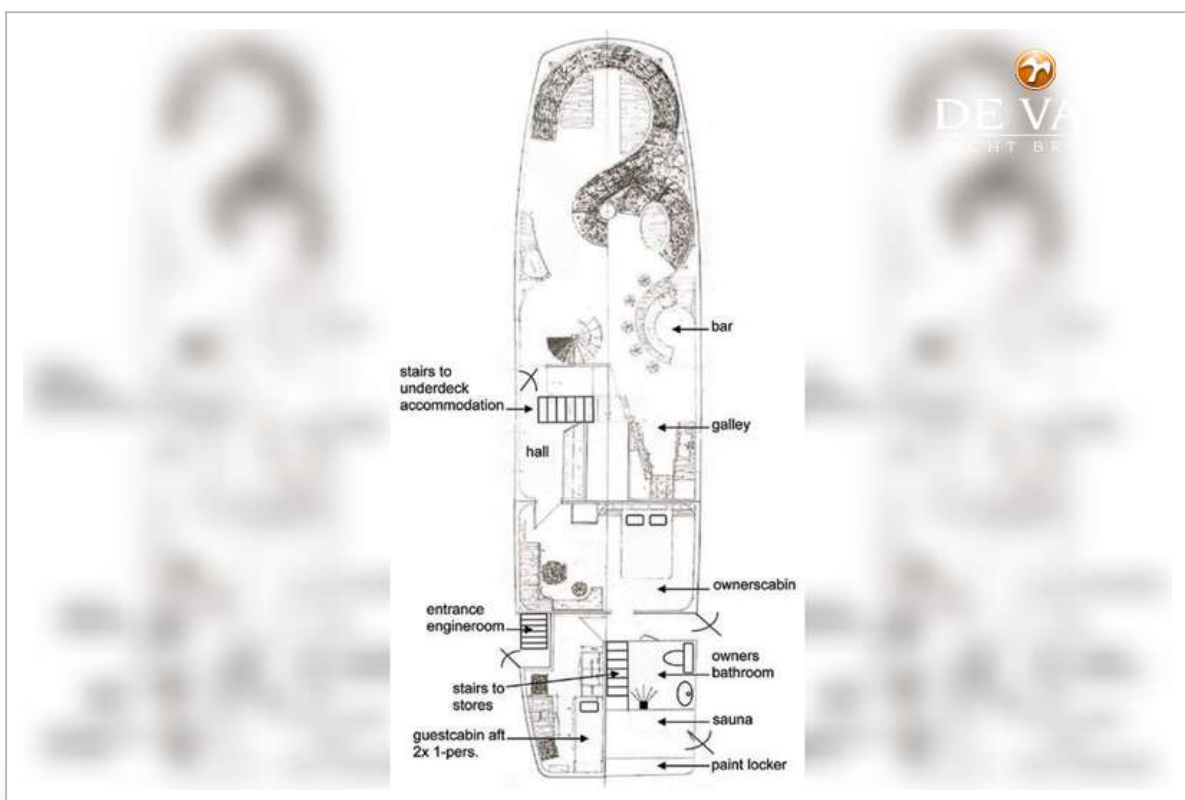
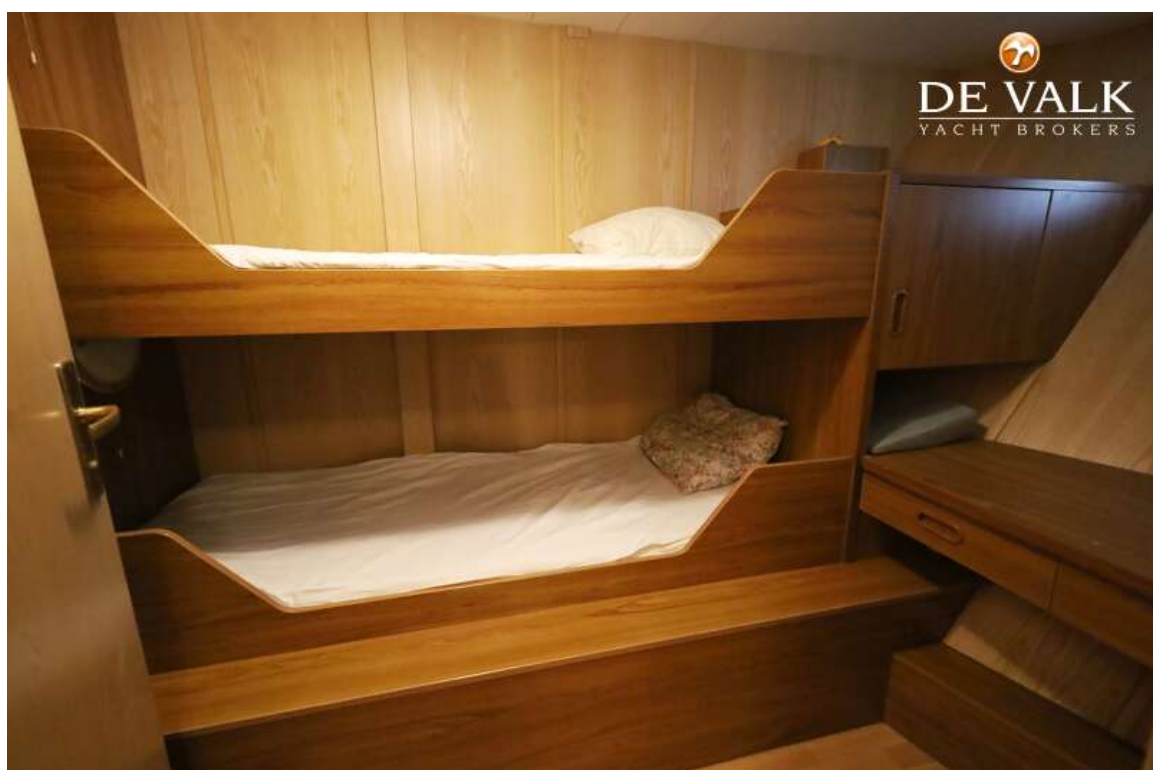
EXPEDITION VESSEL LONG RANGE 29M



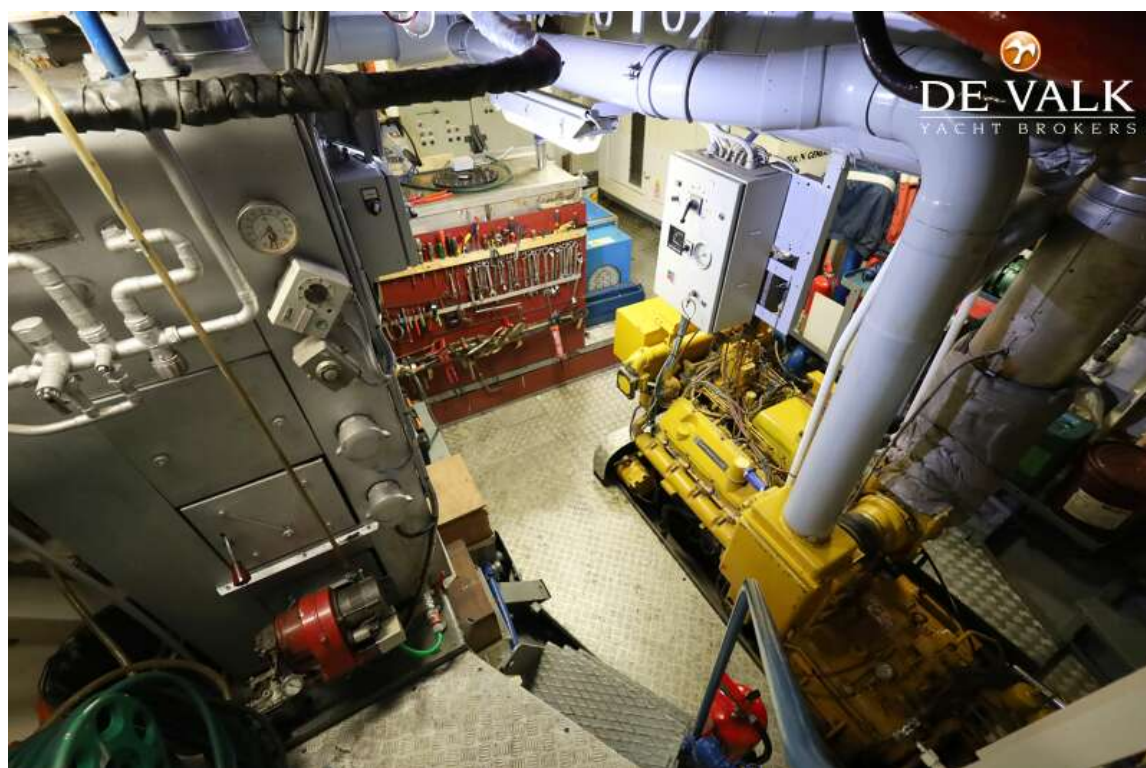
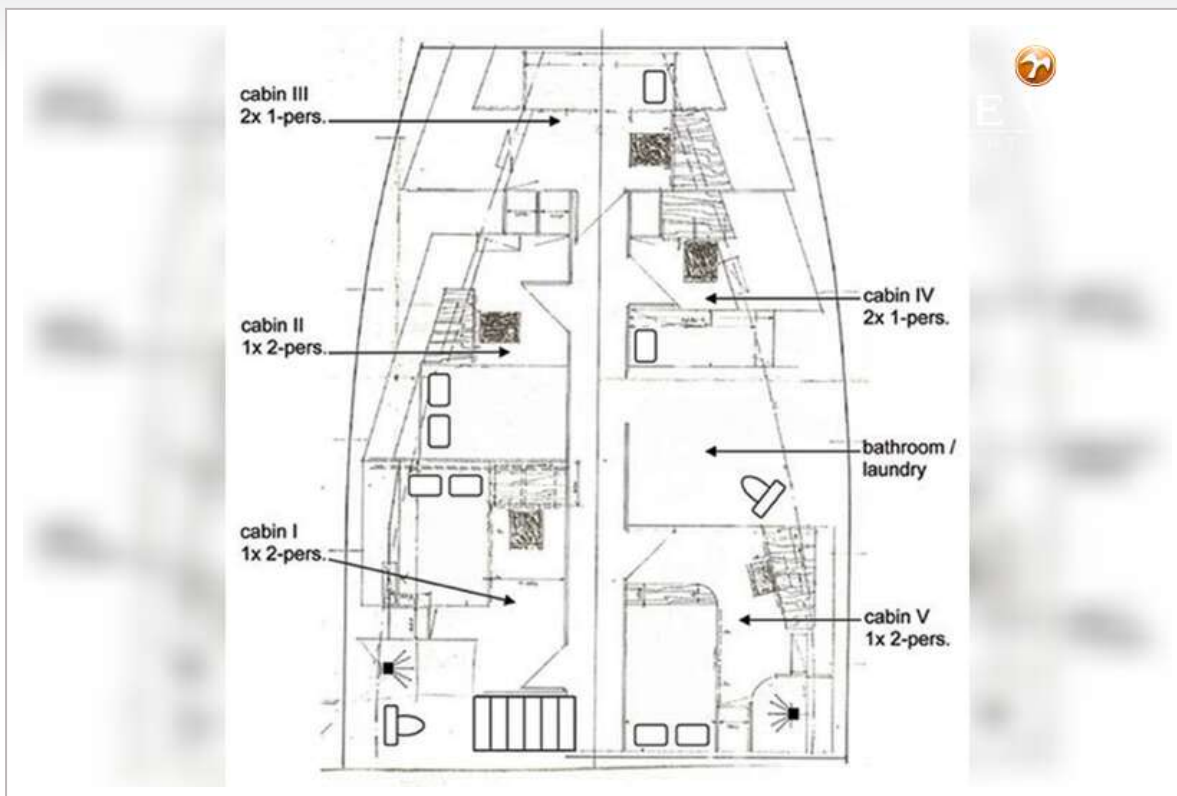
EXPEDITION VESSEL LONG RANGE 29M



EXPEDITION VESSEL LONG RANGE 29M



EXPEDITION VESSEL LONG RANGE 29M



EXPEDITION VESSEL LONG RANGE 29M

