



DE VALK
YACHT BROKERS



BAVARIA 35 MATCH



DE VALK
YACHT BROKERS

BAVARIA 35 MATCH

BROKER'S COMMENTS

The Match series by Bavaria were designed by Doug Peterson. Their goal was to create a fun and fast cruiser that could have top performance but was also very suitable for cruising with family and friends. This 35 Match has not been used for racing. Just family cruising.

Marc Weijenberg

SPECIFICATIONS

Dimensions	10.79 x 3.27 x 2.00 (m)	Builder	Bavaria Yachtbau GmbH
Built	2005	Cabins	2
Material	GRP	Berths	6
Engine(s)	1 x Volvo Penta MD2020 diesel	Hp/Kw	19.00 (hp), 13.97 (kw)
Asking price	sold (VAT)	Lying	at sales office

CONTACT

Sales office	De Valk Sint Annaland B.V.	Telephone	+31 (0)166 601 000
Address	Koelhuisweg 4 4697 RM Sint Annaland NL	E-mail	sintannaland@devalk.nl

DISCLAIMER

These particulars are given in good faith as supplied but cannot be guaranteed.



BAVARIA 35 MATCH

GENERAL

Model	BAVARIA 35 MATCH
Type	sailing yacht
LOA (m)	10,79
LWL (m)	10,10
Beam (m)	3,27
Draft (m)	2,00
Air draft (m)	17,00
Headroom (m)	1,85
Year built	2005
Builder	Bavaria Yachtbau GmbH
Country	Germany
Designer	Doug Peterson + J&J Design
Displacement (t)	5,4
Ballast (tonnes)	lead 2,1
CE norm	A
Hull material	GRP
Hull colour	white
Hull shape	roundbilged
Keel type	bulb keel "swept aft" MkII
Superstructure material	GRP
Rubbing strake	aluminum
Deck material	GRP
Deck finish	moulded in
Cockpit deck finish	teak
Window frame	aluminum
Window material	polycarbonate
Fuel tank (litre)	polyethylene 90
Freshwater tank (litre)	polyethylene 150
Blackwater tank (litre)	polyethylene 80, not yet connected
Blackwater tank extraction	pump



BAVARIA 35 MATCH

Wheel steering	mechanical Lewmar
Emergency tiller	yes
Extra info	MkII version with the steel framework around the keel joint. Swept aft keel with bulb Steering wheel leather covered

ACCOMMODATION

Cabins	2
Berths	6
Interior	mahogany
Floor	teak and holly
Headroom saloon (m)	1,85
Heating	diesel ducted hot air Webasto
Chart table	yes
Galley	yes
Sink	stainless steel
Cooker	Eno two burner
Oven	Eno
Fridge	Isotherm 12v
Hot water system	220V + engine Q-Line
Water pressure system	electrical
Owners cabin	v-bed
Bed length (m)	1,92 x 1,40
Wardrobe	shelves
Bathroom	yes
Toilet	shared
Toilet system	manual
Wash basin	in the bathroom
Guest cabin 1	double bed 207 x 160cm
Wardrobe	hanging

MACHINERY



BAVARIA 35 MATCH

No of engines	1
Make	Volvo Penta
Type	MD2020
HP	19,00
kW	13,97
Fuel	diesel
Year installed	2005
Maximum speed (kn)	6
Consumption (l/hr)	2
Engine hours	Approx. 500
Engine cooling system	freshwater heat exchanger
Drive	sail-drive
Engine controls	bowden cable
Gearbox	mechanical Volvo Penta Saildrive
Propeller type	folding
Propeller blades	3
Manual bilge pump	1 x
Electric bilge pump	1 x
Electrical installation	12/220v
Start battery	1 x 55 amp
Service battery	1 x 140 amp
Battery charger	Mastervolt 12v/35amp
Shorepower	with cable

NAVIGATION

Compass	on wheelpedestal Plastimo
Depth sounder	Raytheon ST60
Log	Raytheon ST60
Windset	Raytheon ST60
VHF	Navman 7100 (no Atis)
Plotter	Geonav 6 + GPS



EQUIPMENT

Winter cover	heavy duty
Bathing platform	yes
Boarding ladder	stainless steel
Deck shower	hot and cold
Anchor	Danforth Fortress + 25 mtr line
Sea railing	stainless steel
Grab rail (superstructure)	stainless steel
Pushpit	yes
Pulpit	yes
Lifebuoy	1 x
Fenders	yes
Mooring lines	yes
Radio-cd player	Sony
Speakers in salon	yes
Clock - barometer	yes

RIGGING

Rigging	fractional
Brand mast	Seldén
Material mast	aluminum
Mainsail cover	Type Lazy Bag
Battcars	yes
Fully battened mainsail	Quantum Sails 2012, bi-radial cut
Genoa II	Quantum Sails 2012, bi-radial cut
Genoa furler	Furlex
Genoa cover	yes
Spinnaker	with rocon Elvstrom/Sobstad 2005
Reefing System	slabreefing
Backstay adjuster	tackle
Boomvang	mechanical Seldén



BAVARIA 35 MATCH

Genoa sheetwinches

Lewmar 2 x 40AST

Halyard winches

Lewmar 2 x 30AST

Spi-pole

aluminum

Extra info

Rod-standing rigging



BAVARIA 35 MATCH



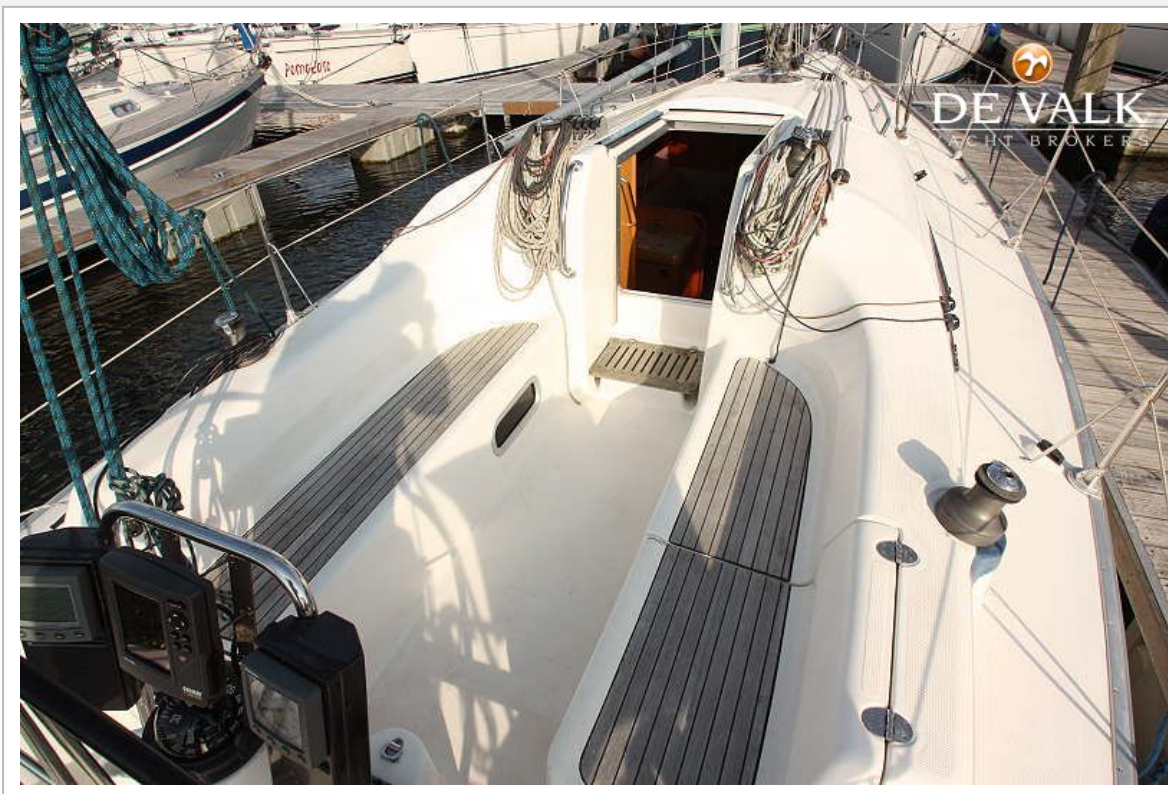
BAVARIA 35 MATCH



BAVARIA 35 MATCH



BAVARIA 35 MATCH



BAVARIA 35 MATCH



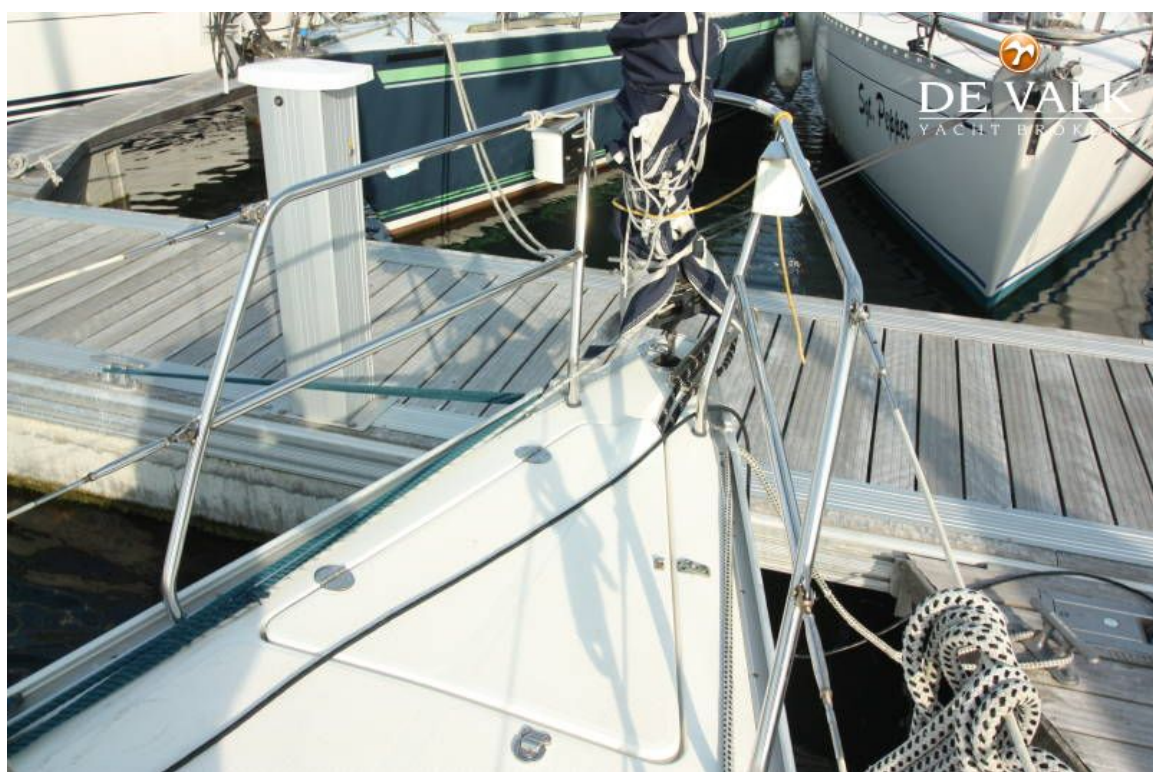
BAVARIA 35 MATCH



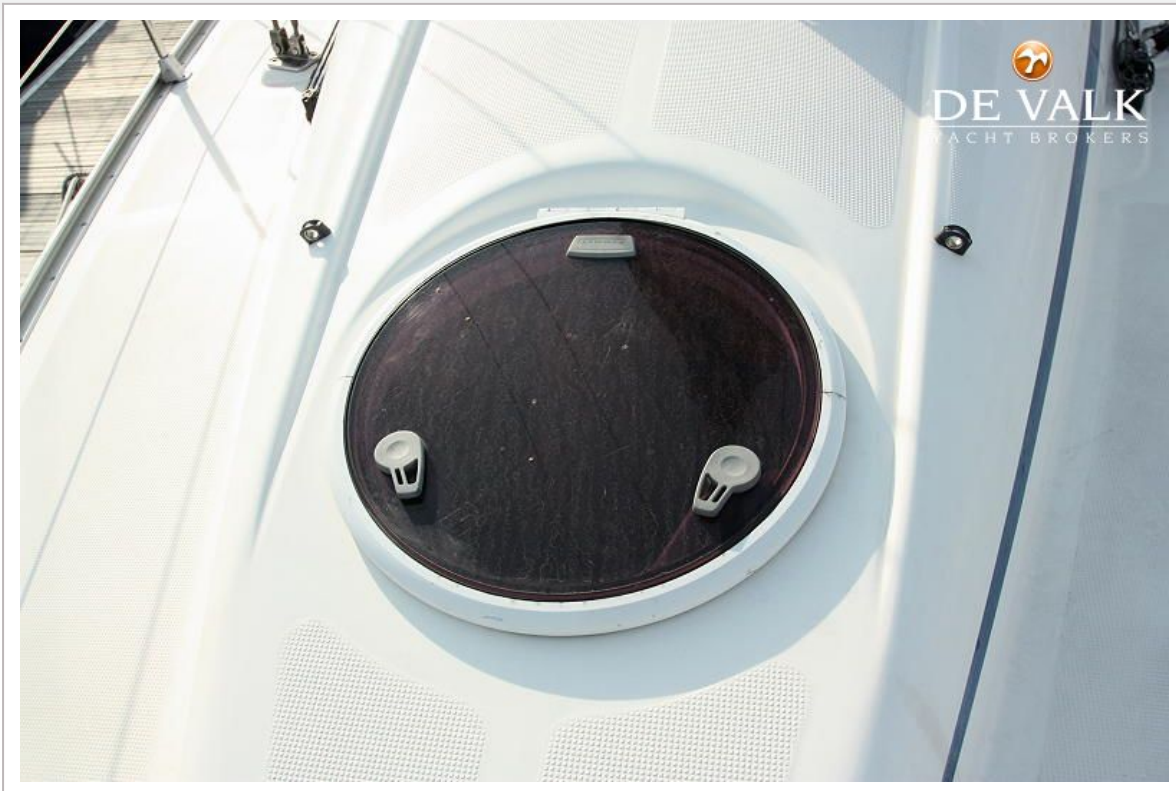
BAVARIA 35 MATCH



BAVARIA 35 MATCH



BAVARIA 35 MATCH



BAVARIA 35 MATCH



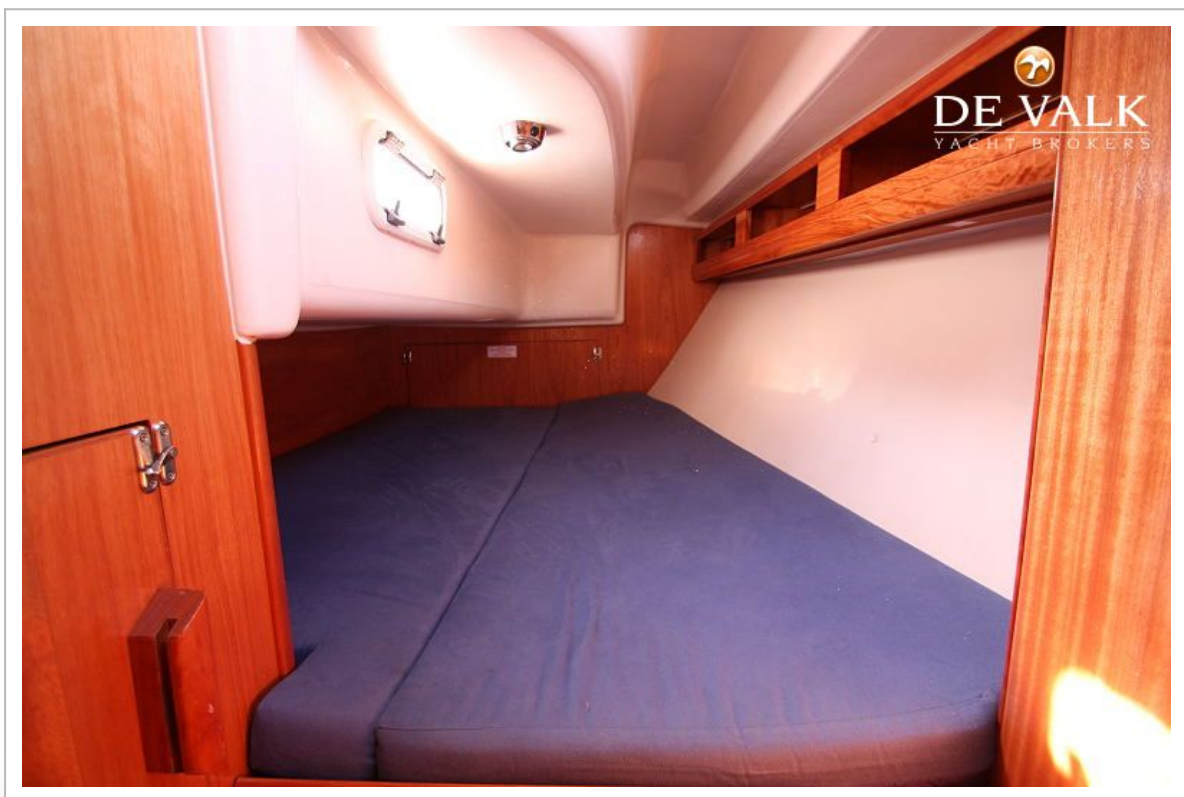
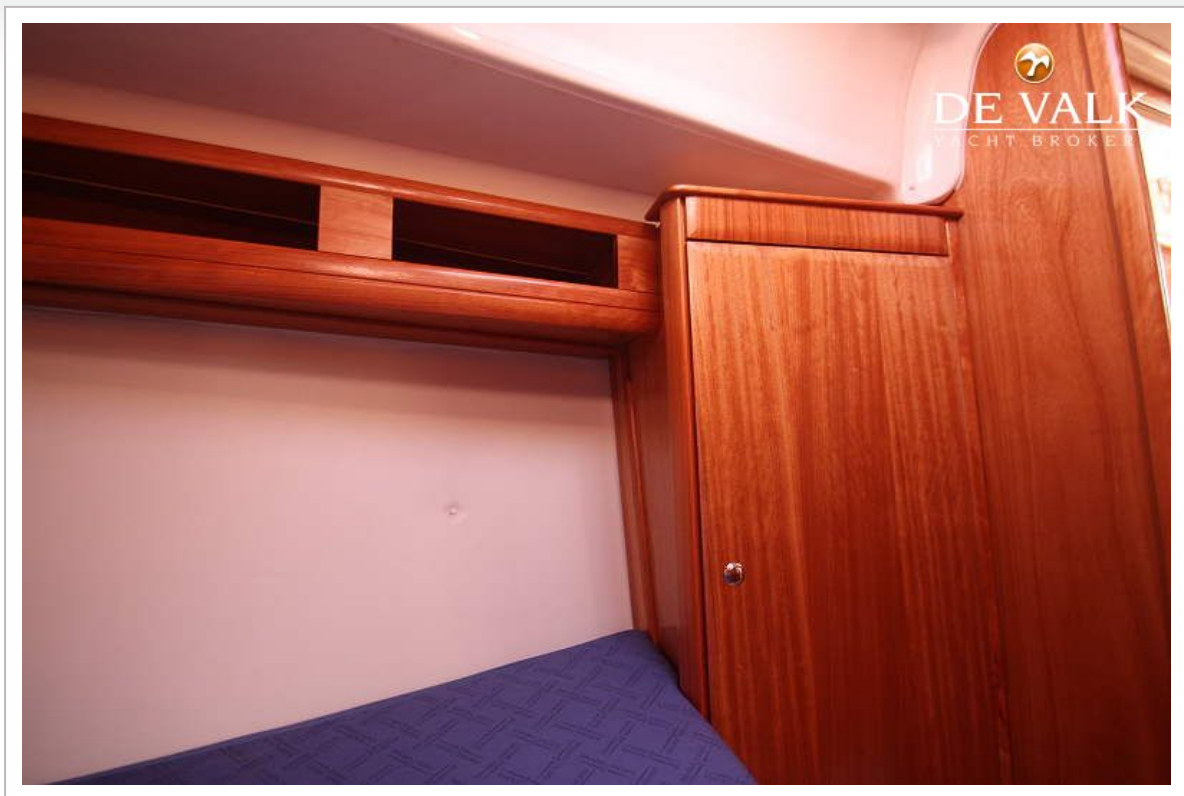
BAVARIA 35 MATCH



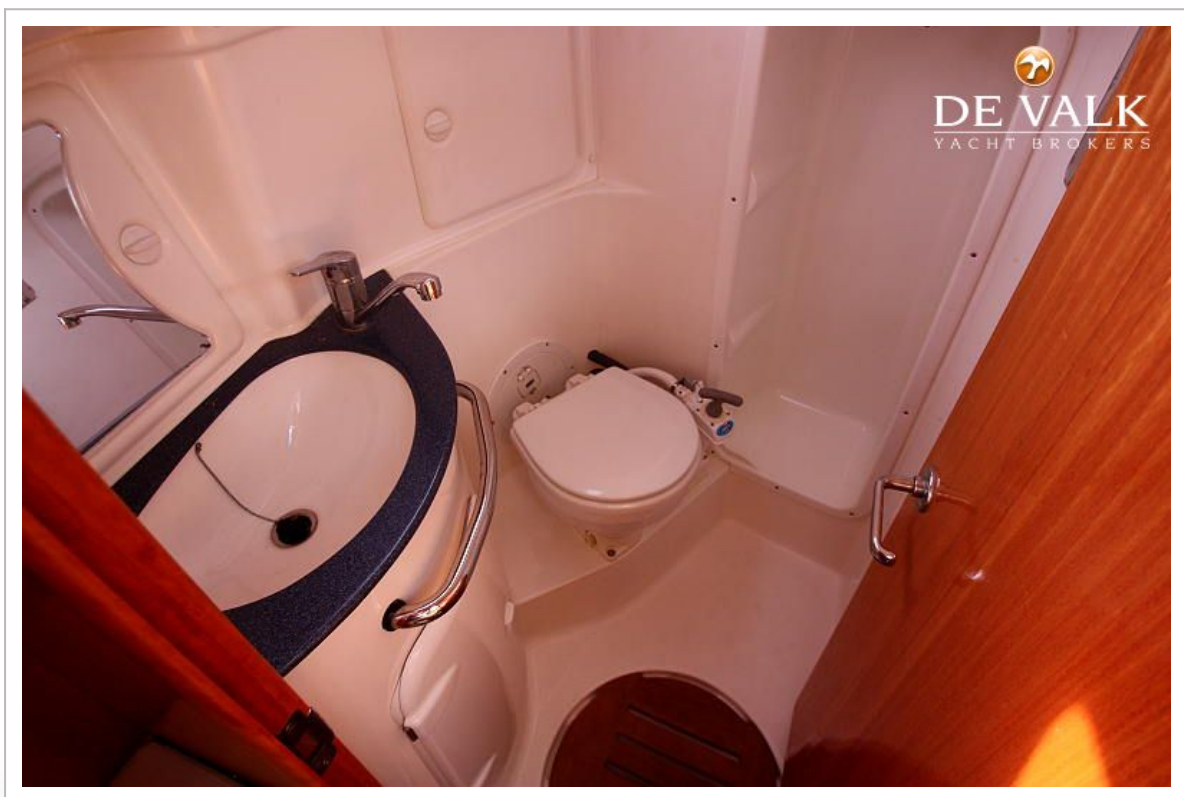
BAVARIA 35 MATCH



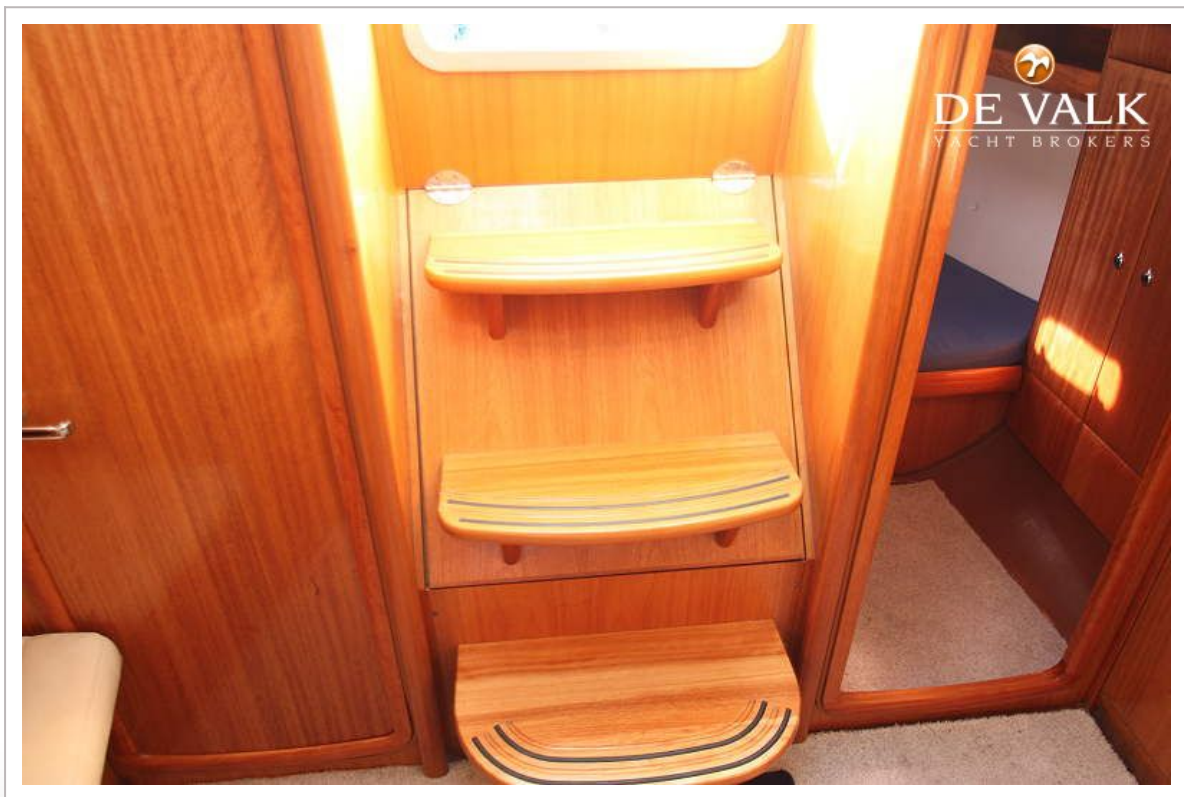
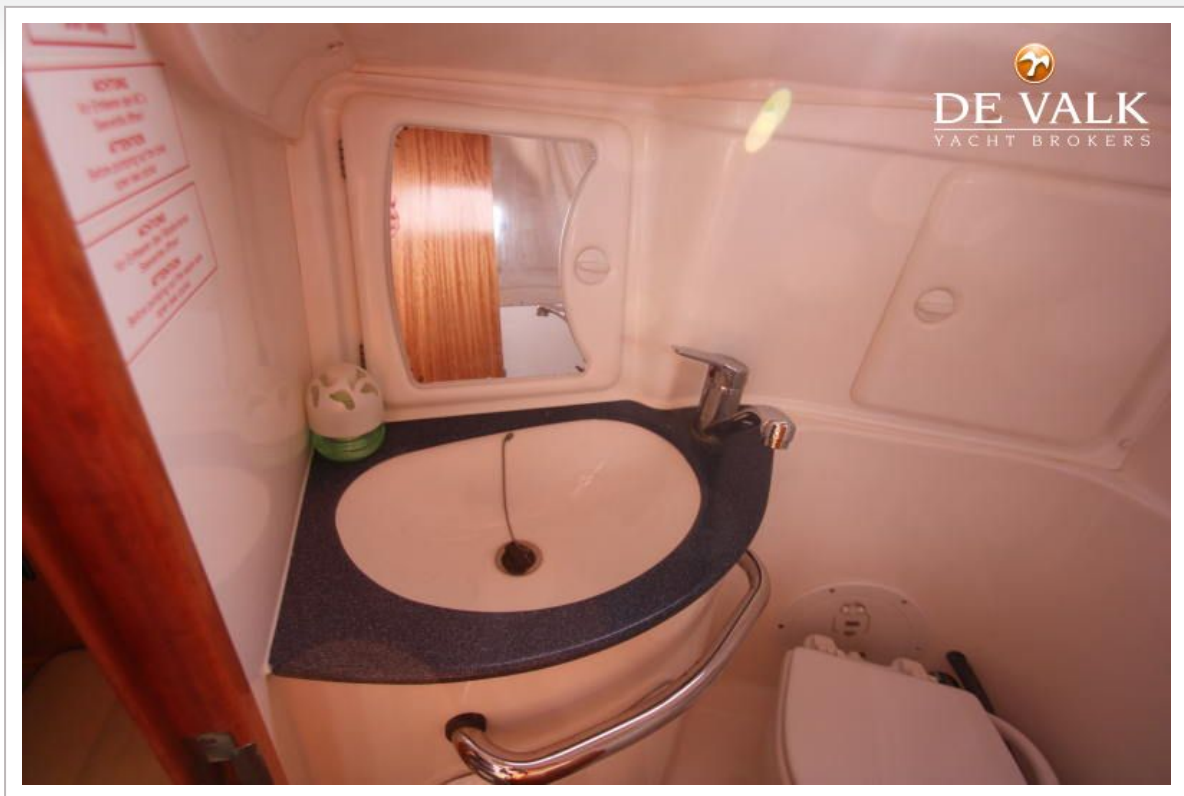
BAVARIA 35 MATCH



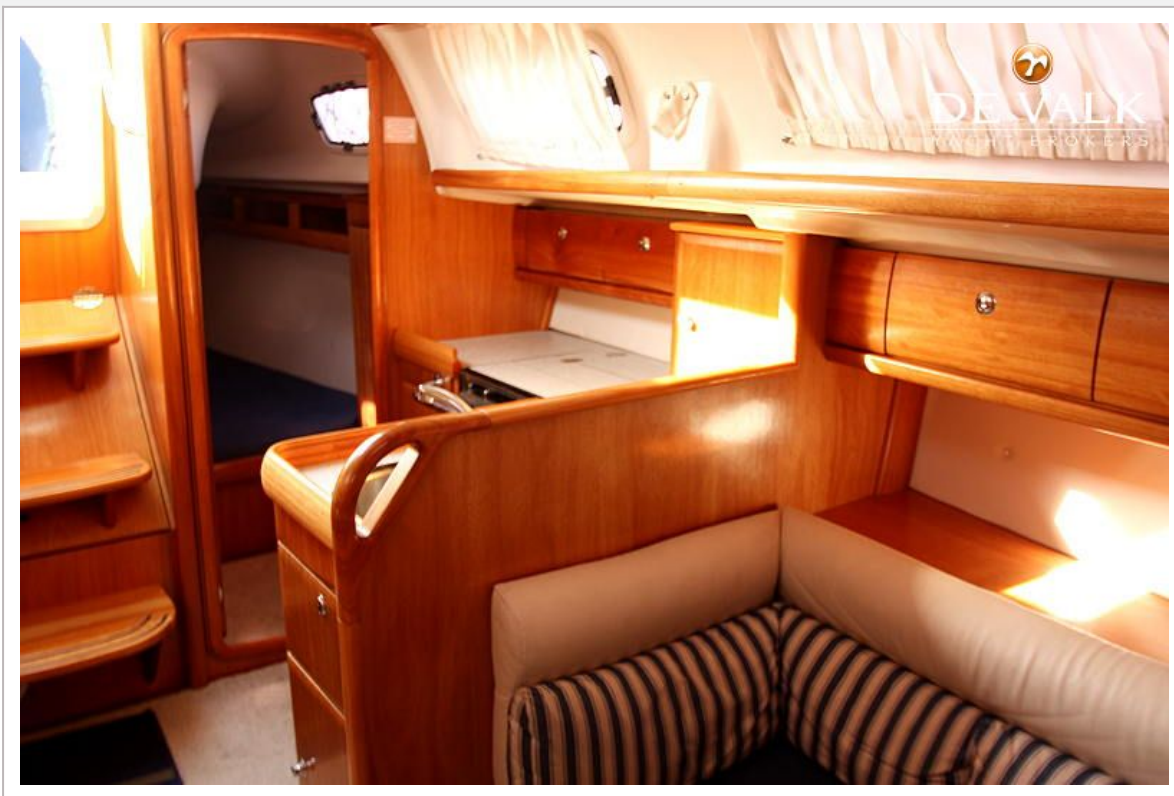
BAVARIA 35 MATCH



BAVARIA 35 MATCH



BAVARIA 35 MATCH



BAVARIA 35 MATCH



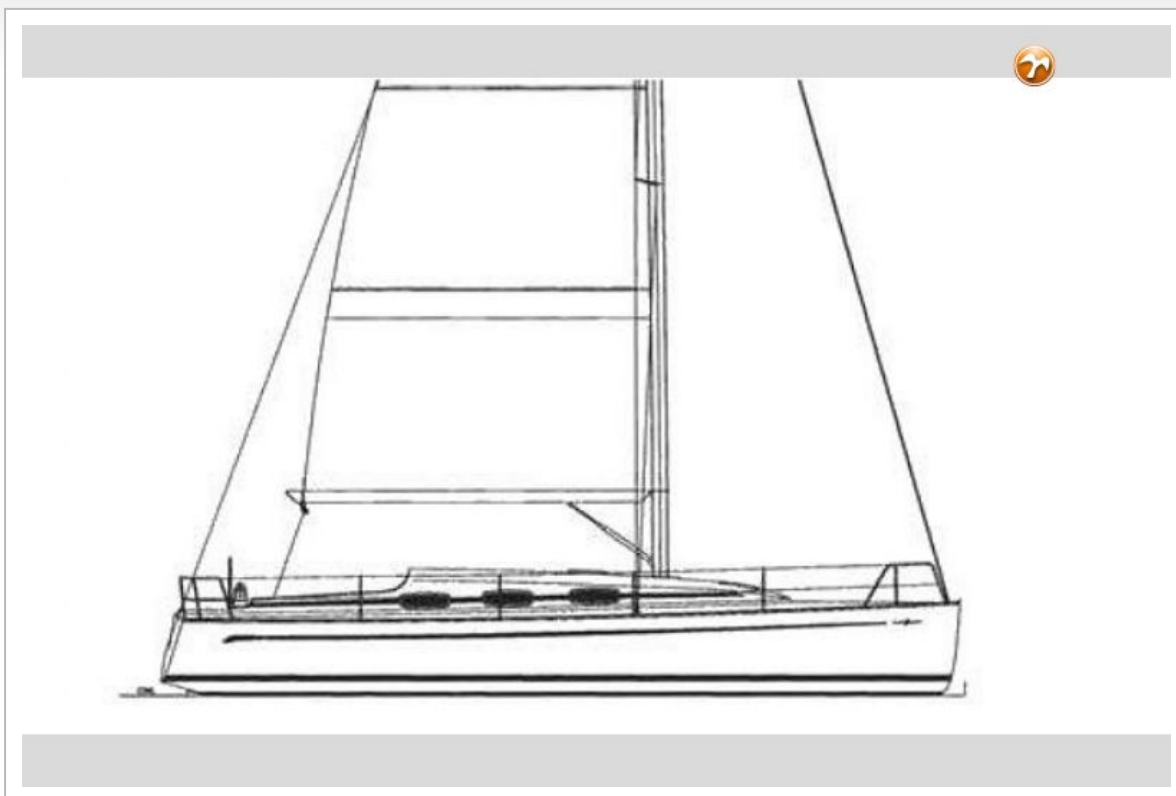
BAVARIA 35 MATCH



BAVARIA 35 MATCH



BAVARIA 35 MATCH



BAVARIA 35 MATCH

