



DE VALK
YACHT BROKERS



SCALAR 36 DS



DE VALK
YACHT BROKERS

SCALAR 36 DS

BROKER'S COMMENTS

The Scalar 36 DS offers all the enjoyment of family cruising without any of the usual discomfort in inclement weather. She's truly a dual-role boat, bringing her owners to the best of two worlds, power and sail. Sail setting is a job anyone can handle. The roller furling/reefing genoa and in-mast furling mainsail are both controlled entirely from the cockpit. To enjoy sailing without the hard work, there's no better choice than the Scalar 36 DS! Owner upgraded her the last years for almost Euro 35.000,-. She's a real eye catcher!

Pieter Bosma

SPECIFICATIONS

Dimensions	11.00 x 3.40 x 1.70 (m)	Builder	Scalar Yachten
Built	1992	Cabins	2
Material	GRP	Berths	6
Engine(s)	1 x Yanmar 4JH 2-E diesel	Hp/Kw	44.00 (hp), 32.34 (kw)
Asking price	sold (VAT)	Lying	at sales office

CONTACT

Sales office	De Valk Monnickendam	Telephone	+31 299 65 63 50
Address	Hoogedijk 6 1145 PM Katwoude The Netherlands	E-mail	monnickendam@devalk.nl

DISCLAIMER

These particulars are given in good faith as supplied but cannot be guaranteed.



SCALAR 36 DS

GENERAL

Model	SCALAR 36 DS
Type	sailing yacht
LOA (m)	11,00
LWL (m)	9,12
Beam (m)	3,40
Draft (m)	1,70
Air draft (m)	16,50
Headroom (m)	2,05
Year built	1992
Builder	Scalar Yachten
Country	Germany
Designer	Henningsen & Steckmest
Displacement (t)	7,8
Ballast (tonnes)	lead 3,2
Hull material	GRP
Hull colour	white
Hull shape	S-bilged
Keel type	long keel
Superstructure material	Mahogany + teak
Rubbing strake	yes
Deck finish	teak Overhauled in 2010
Superstructure deck finish	teak
Cockpit deck finish	teak
Antifouling (year)	2013
Dorades	5x
Window frame	aluminum
Window material	tempered glass
Insulation	Ja
Fuel tank (litre)	180
Level indicator (fuel tank)	yes



SCALAR 36 DS

Freshwater tank (litre)	340
Level indicator (freshwater)	yes
Blackwater tank (litre)	60
Blackwater tank extraction	yes
Greywater tank (litre)	80
Wheel steering	Outside
Inside helm position	Hydraulic of 2010
Emergency tiller	yes
More info on hull	Underwatership rebuilt in 2009: 6x Epoxy/Gelshield/1x anti fouling.
More info on paintwork	In 2012 the superstructure has been varnished (4/6 times), partially inside.

ACCOMMODATION

Cabins	2
Berths	6
Interior	mahogany
Open cockpit	yes
Deck saloon	Headroom 1,95 m
Saloon	yes
Headroom saloon (m)	2,05 m
Heating	Trumatik
Chart table	yes
Sliding door to cockpit	yes
Galley	yes
Sink	stainless steel Double
Cooker	calor gas
Oven	yes
Fridge	Waeco CF35
Hot water system	yes
Water pressure system	electrical
Owners cabin	v-bed



SCALAR 36 DS

Bed length (m)	2,10
Wardrobe	yes
Toilet	Rheinstrom (overhauled 2010)
Wash basin	yes
Shower	yes
Guest cabin 1	bunk bed
Wardrobe	yes

MACHINERY

No of engines	1
Make	Yanmar
Type	4JH 2-E
HP	44,00
kW	32,34
Fuel	diesel
Year installed	1992
Maximum speed (kn)	7
Cruising speed (kn)	6
Consumption (l/hr)	1,6
Engine hours	2600
Drive	shaft
Engine controls	2x
Gearbox	mechanical
Bowthruster	electric Side power 4 hp
Propeller type	folding Prowell + fixed one as spare
Propeller blades	3
Propeller shaft material	stainless steel
Shaft lubrication	water
Manual bilge pump	1x (2012)
Electric bilge pump	1x
Electrical installation	Mastervolt + Phillippi



SCALAR 36 DS

Generator	Mastervolt 80 Amp.
Batteries	3x AGM (2010)
Start battery	1x (2010)
Battery monitor	Mastervolt Controller Masterlink (2010)
Battery charger	Mastervolt Chargemaster 12/70/3 (2010)
Shorepower	yes
Extra info	2011: engine general overhauled: injection pump, water and diesel pump, new hoses, professional tank cleaning. 2006: exhaust, water collector, propeller shaft, rubber coupling, rubber foot.

NAVIGATION

Compass	Plath + Silva
Depth sounder	Raymarine ST60 (2010)
Log	Raymarine ST60 (2010)
VHF	RT 5500 D
Autopilot	Raymarine SPX-30 + RM (2010)
Rudder angle indicator	yes
GPS	Raymarine (2010) + Garmin 152
Plotter	Raymarine C120 (2006)
Electronic chart(s)	2x (Navionics 2010/2012)
AIS receiver	Raymarine (2009)
Extra info	Raymarine R125+ antenna (2011)

EQUIPMENT

Bimini	(2010)
Cockpit cushions	6x
Cockpit table	2x
Boarding ladder	yes
Bow ladder	S/S
Gangway	In two parts (2008)



SCALAR 36 DS

Anchor	yes
Anchor chain	30 m + 25 Line
Anchor 2	Bruce + 30 m line
Windlass	electrical Lofrans 1000 + RM (2010)
Dinghy	Honwave (2010)
Outboard	Honda (2010)
Davits	Removable (2010)
Sea railing	yes
Pushpit	S/S
Pulpit	S/S
Life raft	AWN Offshore (2010)
Life raft (pers)	4
Last life raft survey	2013
Lifejackets	3x (2013) + 3x old
Safety lines on deck	yes
Wiper	(2013)
Horn	yes
Radar reflector	yes
Radio-cd player	yes
iPod connection	yes
Speakers in salon	2x
Speakers in cabin	2x
Clock - barometer	+ hygrometer
Fire extinguisher	yes
Extra info	Summer cover (2004)

RIGGING

Rigging	sloop-cutter
Brand mast	Bamar
Material mast	aluminum
Mainsail	Haase 2013 - sandwich laminate



Stoway mast	Reckmann
Genoa II	(2002)
Genoa III	(old)
Genoa furler	Heino Haase
Booster	96 m2
Removable innerforestay	yes
Stormjib	New
Backstay adjuster	Barbarossa
Boomvang	tackle
Genoa sheetwinches	2x Lewmar ST48
Halyard winches	3x Lewmar ST30
Spi-pole	yes
Gennaker pole	yes



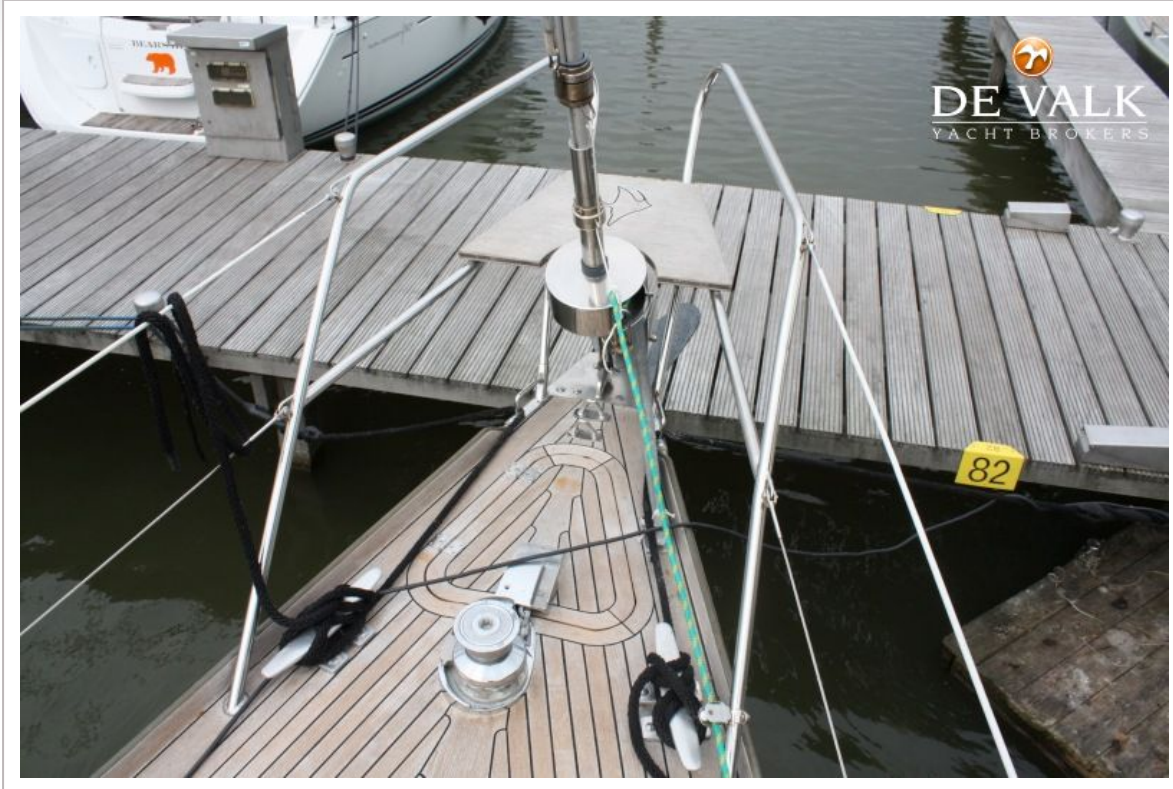
SCALAR 36 DS



SCALAR 36 DS



SCALAR 36 DS



SCALAR 36 DS



SCALAR 36 DS



SCALAR 36 DS



SCALAR 36 DS



SCALAR 36 DS



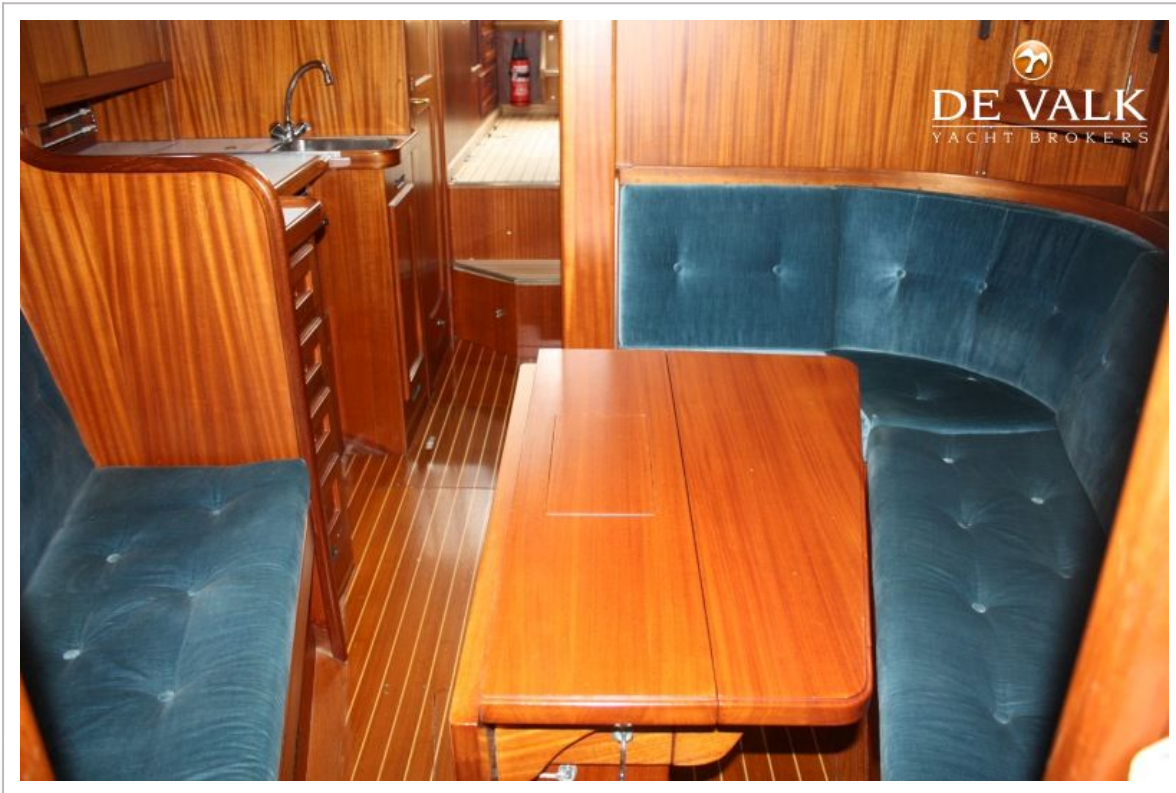
SCALAR 36 DS



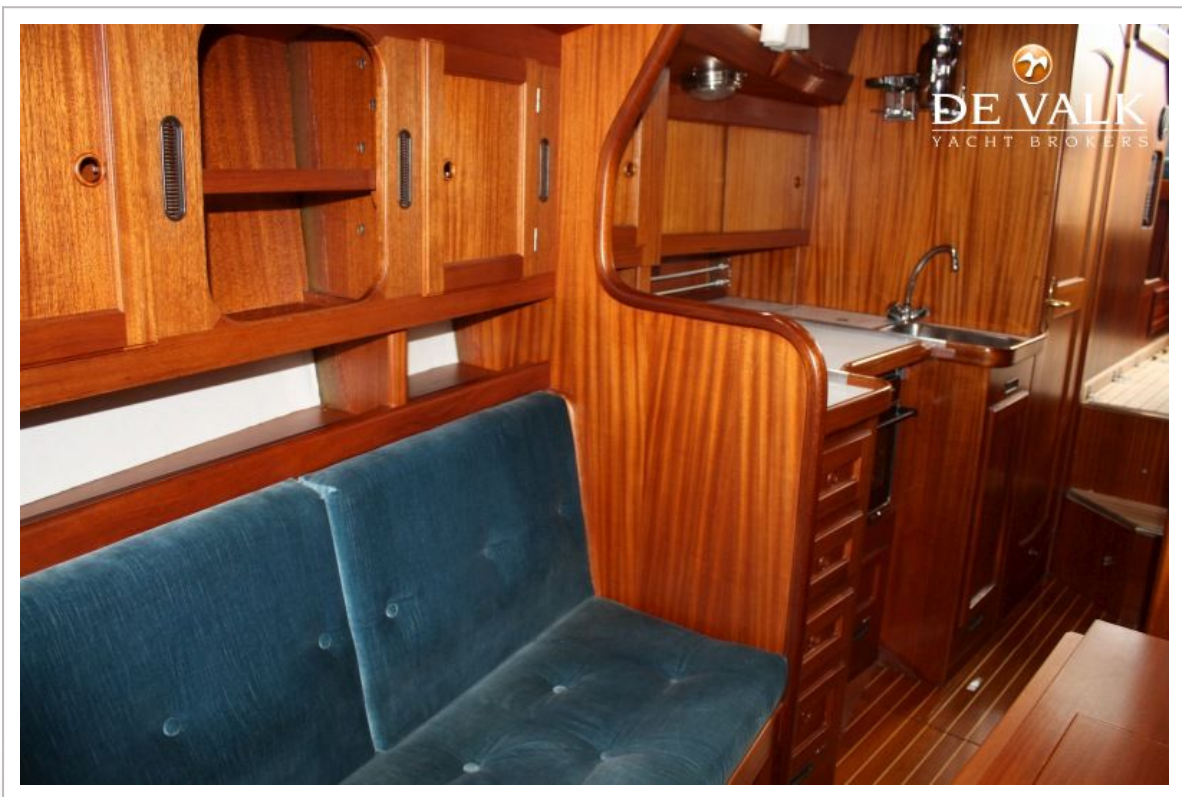
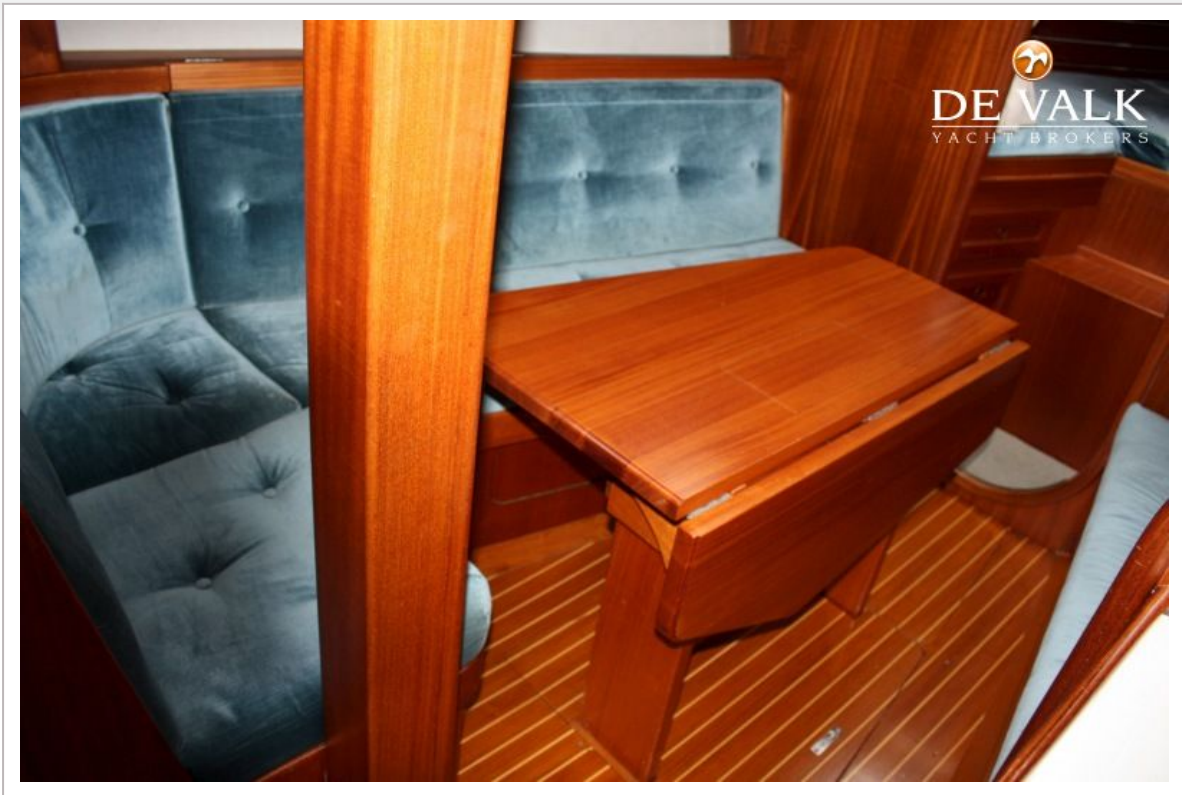
SCALAR 36 DS



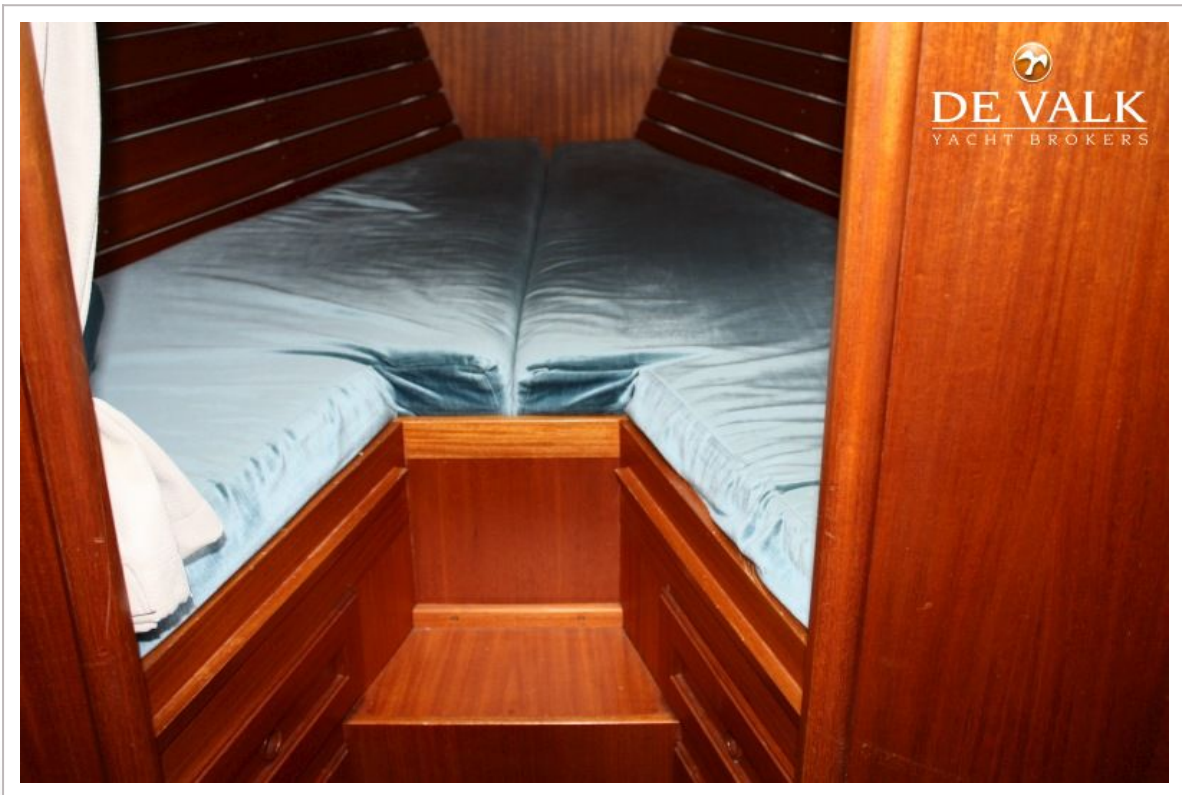
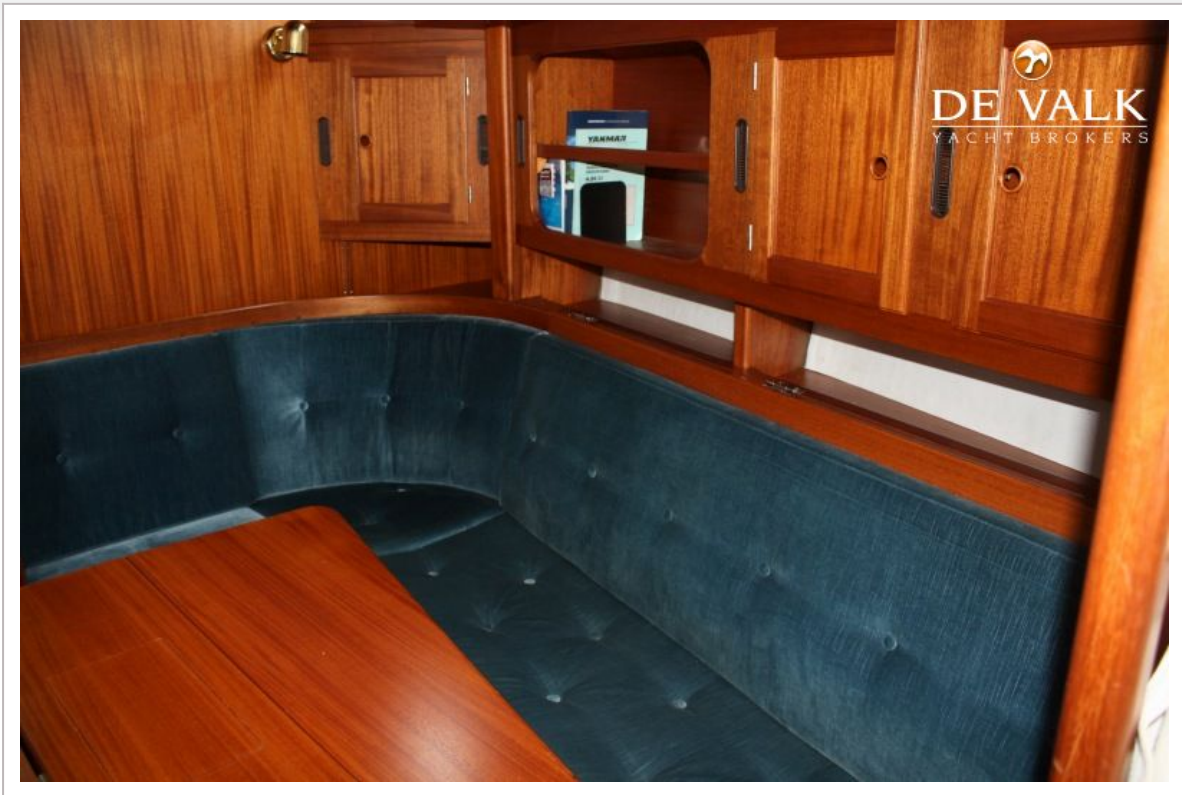
SCALAR 36 DS



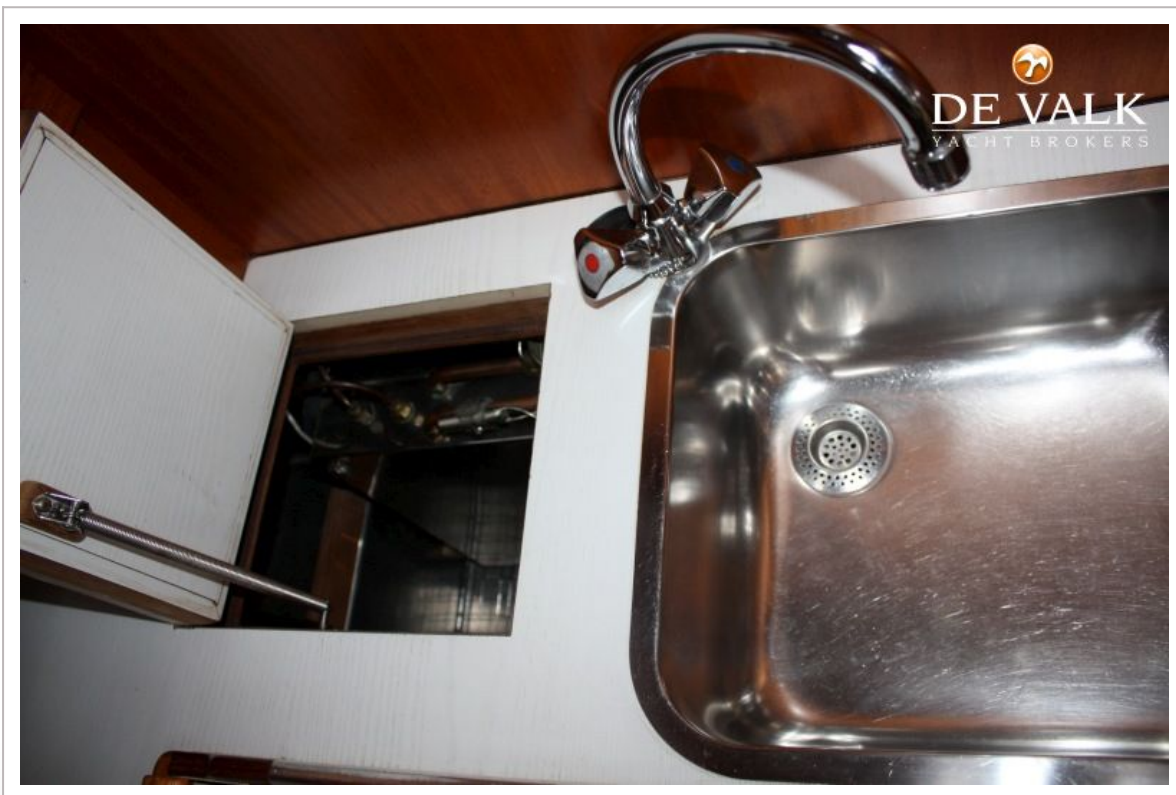
SCALAR 36 DS



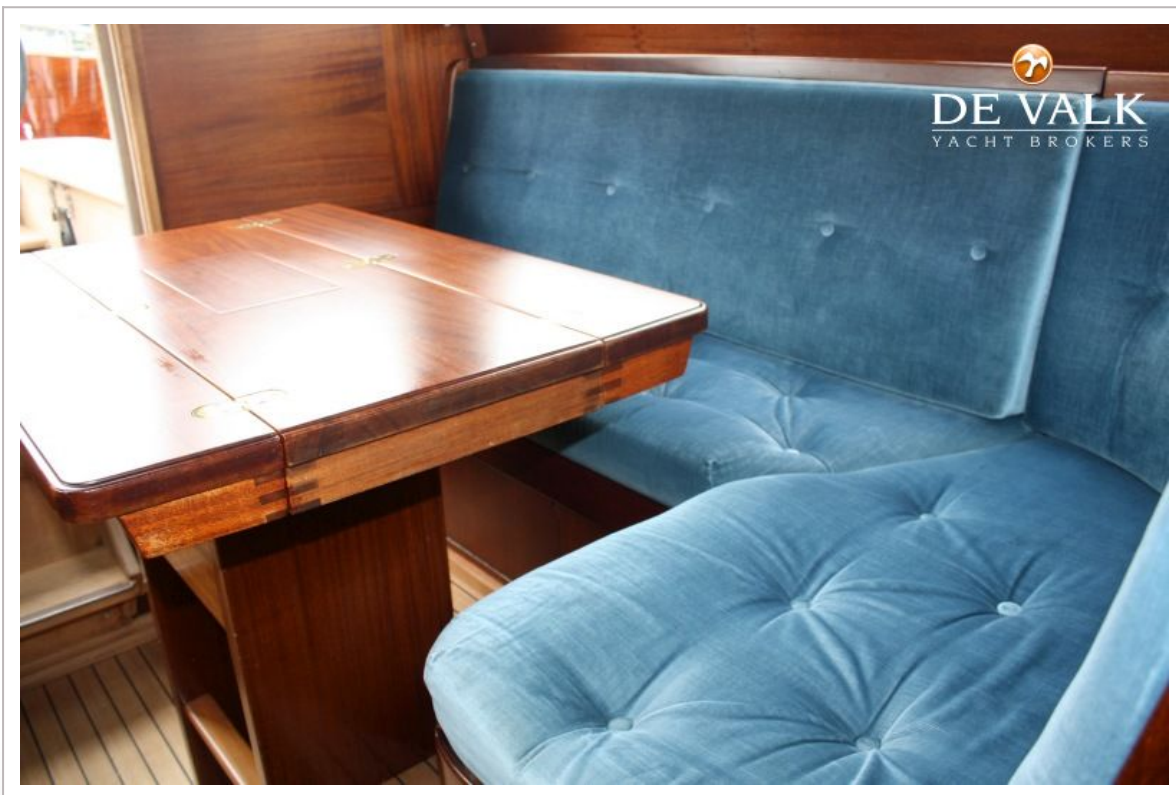
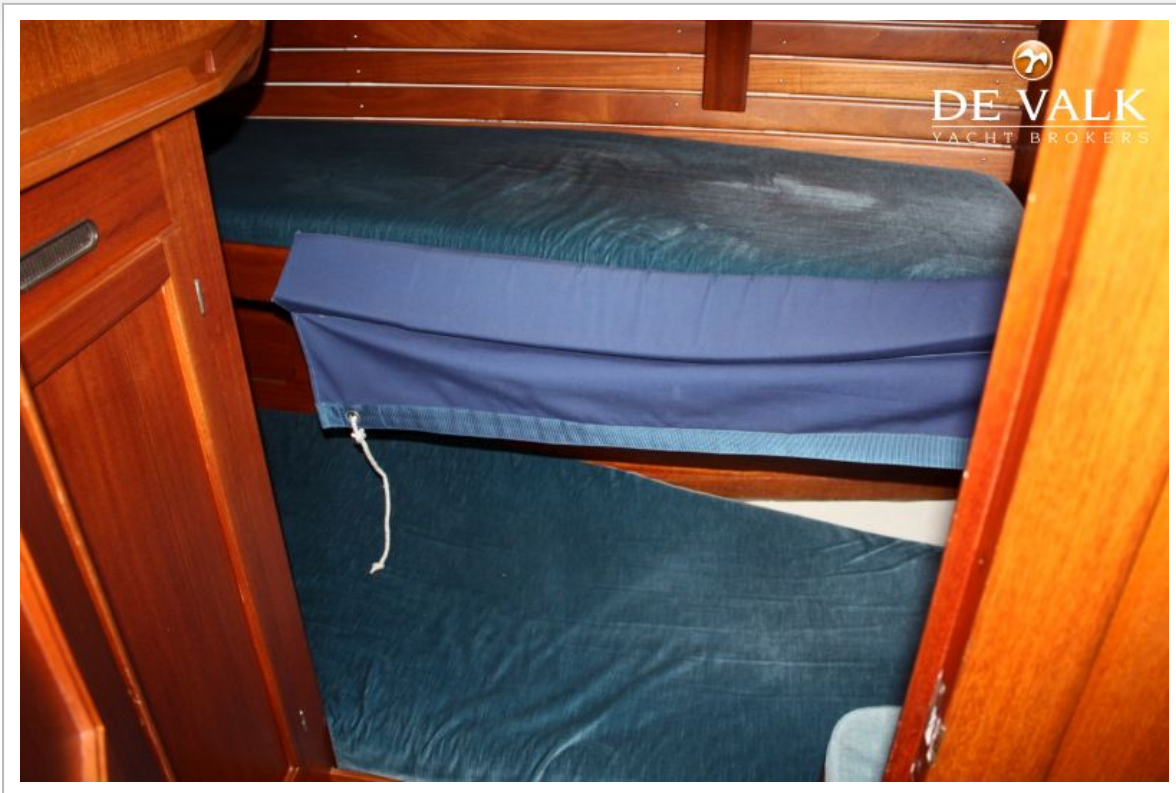
SCALAR 36 DS



SCALAR 36 DS



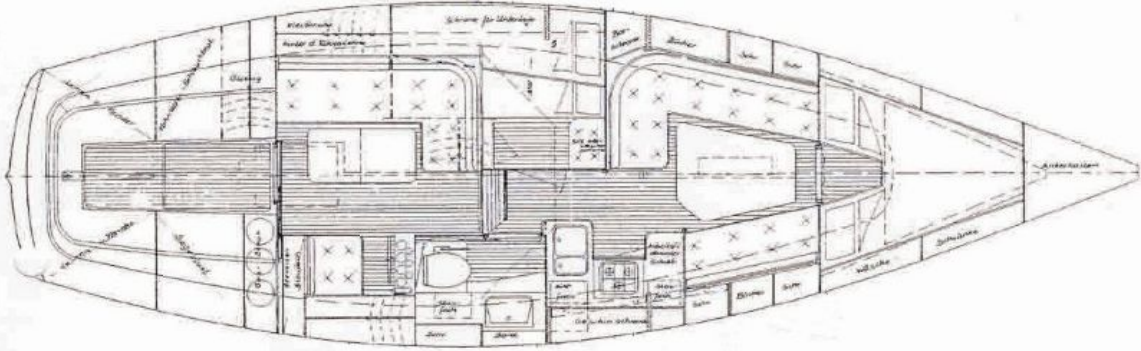
SCALAR 36 DS



SCALAR 36 DS



DE VALK
YACHT BROKERS



DE VALK

