



DE VALK
YACHT BROKERS



BENDIE IMPRESSIVE 2300



DE VALK
YACHT BROKERS

BENDIE IMPRESSIVE 2300

BROKER'S COMMENTS

With an eye for detail, smooth lines, space, technology and luxury this Bendie 23 is built for a highly experienced "out of the box" thinking experienced yacht owner. Her large bright living room, very well equipped galley and huge owners cabin she provides optimum comfort. With covered gangways, a lovely spacious cockpit and bathing platform, you can sail to the good weather. With modern 355 hp diesels, stabilizers, hydraulic thrusters and a spud pole gave this yacht excellent maneuverability.

Julian de Heer

SPECIFICATIONS

Dimensions	23.00 x 5.70 x 1.40 (m)	Builder	Jachtwerf Bendie
Built	2013	Cabins	1
Material	Steel	Berths	4
Engine(s)	2 x Cummins QSB 5.9-355 diesel	Hp/Kw	2 x 355.00 (hp), 260.93 (kw)
Asking price	Under Offer (VAT)	Lying	contact Loosdrecht

CONTACT

Sales office	De Valk Loosdrecht B.V.	Telephone	+31 (0)35 582 90 30
Address	't Breukeleveense Meentje 6 1231LM Loosdrecht / Wijdmeren NL	E-mail	loosdrecht@devalk.nl

DISCLAIMER

These particulars are given in good faith as supplied but cannot be guaranteed.



BENDIE IMPRESSIVE 2300

GENERAL

Model	BENDIE IMPRESSIVE 2300
Type	motor yacht
LOA (m)	23,00
Beam (m)	5,70
Draft (m)	1,40
Air draft min (m)	3,50
Year built	2013
Launched	2014
Builder	Jachtwerf Bendie
Country	The Netherlands
Designer	Van Vossen Engineering
Displacement (t)	60
Ballast (tonnes)	lead For trim
CE norm	A
Hull material	steel
Hull colour	off-white
Hull thickness (mm)	6
Hull shape	round-bilged
Superstructure material	steel
Superstructure (mm)	4
Deck plate thickness (mm)	5
Rubbing strake	stainless steel
Deck material	steel
Deck finish	teak
Superstructure deck finish	teak
Cockpit deck finish	teak
Antifouling (year)	2023
Window frame	yes
Window material	double glazing
Deckhatch	yes



BENDIE IMPRESSIVE 2300

Portholes	stainless steel
Insulation	foam
Radar arch	collapsible
Mast can be lowered	hydraulic
Fuel tank (litre)	steel 2000
Fuel tank 2 (litre)	steel 2000
Level indicator (fuel tank)	Integrated in screens and indicator glass on tanks
Freshwater tank (litre)	polyethylene 2500
Level indicator (freshwater)	Integrated in screens and indicator glass on tanks
Blackwater tank (litre)	polyethylene 800
Level indicator (blackwater)	Integrated in screens
Blackwater tank extraction	deck extraction + pump
Wheel steering	hydraulic
Inside helm position	yes
Extra info	CVO certified
Extra info	Airdraft 3,40m with full tanks

ACCOMMODATION

Cabins	1
Berths	4
Interior	pearwood
Layout	yes
Floor	parquet Polyethylene
Open cockpit	yes
Saloon	with 4 electronical height/sideway's adjustable tables
Headroom saloon (m)	2,10
Heating	central heating Kabola HR500 with floor heating all over
Air-conditioning	single cycle airco
Navigation center	yes
Aft Cabin	yes
Dinette to convert into berth	Electric adjustable table



BENDIE IMPRESSIVE 2300

Opening door to cockpit	2x side opening doors to helmstation
Opening door to aft deck	4x stainless steel
Galley	with downdraft kitchen vent
Countertop	granite
Sink	stainless steel 1x in the galley, 1x in the salon
Cooker	electric Siemens 4-burner in galley - 2-burner in salon
Oven	AEG competence
Extractor	Falmec
Microwave	Baumatic
Fridge	Samsung twin cooling plus in galley - Tefcold BA30HSD in salon
Freezer	Inside Samsung twin cooling plus
Hot water system	220V + engine AquaH Marine Water Heater 60L/220V
Water pressure system	electrical
Dishwasher	Siemens
Ice maker	Integrated in Samsung fridge
Owners cabin	French bed
Bed length (m)	2,10 x 1,60 m
Wardrobe	hanging and shelves
Bathroom	en suite
Toilet	en suite
Toilet system	electric Tecma
Wash basin	in the bathroom
Shower	en suite
Guest cabin 1	Now in use as a walk in storage, possible for double or bunk bed
Wardrobe	yes
Bathroom	shared
Toilet	shared + urinoir (Geberit)
Toilet system	electric Planus
Wash basin	in the bathroom
Shower	shared
Washing machine/dryer combi	AEG Protex Plus



BENDIE IMPRESSIVE 2300

Central vacuum cleaner

Sach Eco 160

MACHINERY

No of engines	2
Make	Cummins
Type	QSB 5.9-355
HP	355
kW	260.93
Fuel	diesel
Year installed	2013
Maximum speed (kn)	13
Engine hours	1953
Engine cooling system	freshwater heat exchanger
Drive	shaft
Engine controls	electrical Mercure Smart Craft with Trawling valve
Gearbox	hydraulic ZF 85 A
Bowthruster	hydraulic Sidepower 550 HYD
Sternthruster	hydraulic Sidepower 550 HYD
Exhaust	watercooled Silent seperated
Thrust bearing	Python-drive
Propeller type	fixed
Propeller blades	4
Propeller shaft material	stainless steel
Shaft lubrication	water
Manual bilge pump	yes
Electric bilge pump	yes
Bilge alarm	yes
Electrical installation	12-24-230
Generator	silent separator Mastervolt Whisper 16 KVA
Running hours generator	45
Batteries	11



BENDIE IMPRESSIVE 2300

Start battery	2x AGM gel Super Heavy Duty 12V-150Ah
Service battery	8x AGM gel Exide 12V-210Ah
Generator battery	1x Optima Red Top 12V
Battery monitor	Mastervolt MK11 and 1x Automatic Transfer Switch Mastervolt Systemswitch 16
Battery charger	2x Mas 24 100-C and 1x Mastervolt charger for Gen Batt
Battery charger/inverter	2x Mass Combi 24/2500/60
Shorepower	with cable 2x inlets
Insulation transformer	1x Mastervolt GI 3.5
Stabilizers	fin Vetus
Spud pole	Telescopic spud pole Leeuwenstein / Hollandia
Extra info	Fuel consumption 1400 rpm = 14.4 l (both engines) = 12 km/h 1500 rpm = 17.0 l (both engines) = 13.3 km/h 1600 rpm = 21.0 l (both engines) = 14 km/h
Extra info	Both engines have extra dynamo's

NAVIGATION

Compass	Allpa
Electric compass	Yachtcontrol in computer sytem
Depth sounder	Yachtcontrol in computer sytem
Log	Yachtcontrol in computer sytem
Windset	Yachtcontrol in computer sytem
VHF	2x Matrix GX 2000
Autopilot	Simrad FU-80
Rudder angle indicator	1x Maretron DSM250 and on board computer
Radar	Yachtcontrol in computer sytem
GPS	GS15 GPS antenna
Plotter	Yachtcontrol in computer sytem
Radar/GPS/plotter	Yachtcontrol in computer sytem
Weather receiver	In Nav Computer sytem
Personal computer	2x identical system
PC connection	yes



BENDIE IMPRESSIVE 2300

AIS receiver	yes
AIS transponder	yes
Camera	1x bow, 2x sides, 1x stern
Navigation lights	LED Hella
Searchlight	Remote controlled from steering position Jabsco S233SL
Loudhailer	yes

EQUIPMENT

Cockpit cover	yes
Cockpit cushions	yes
Cockpit table	yes
Bathing platform	yes
Boarding ladder	stainless steel
Transom door	yes
Anchor	Danforth
Anchor chain	50 mtrs
Windlass	hydraulic Maxwell
Deck wash	yes
Sea railing	stainless steel
Grab rail (superstructure)	stainless steel
Railing side opening gates	yes
Wiper	With control unit 3x Speich
Window ventilator	yes
Horn	air pressure Kahlenberg D330
Radar reflector	yes
Fenders	yes
Mooring lines	yes
Alarm system	yes
TV	1x Samsung Smart F 8000 12 Htz & 1x at owners cabin
TV receiver	Digitenne
Radio-cd player	In owners cabin Sangean



BENDIE IMPRESSIVE 2300

Surround Sound System

Sound system in board computer with seperated control panel

Cockpit speakers

Aft cockpit and fore deck

Speakers in salon

yes

Speakers in cabin

yes



BENDIE IMPRESSIVE 2300



BENDIE IMPRESSIVE 2300



BENDIE IMPRESSIVE 2300



BENDIE IMPRESSIVE 2300



BENDIE IMPRESSIVE 2300



BENDIE IMPRESSIVE 2300



BENDIE IMPRESSIVE 2300



BENDIE IMPRESSIVE 2300



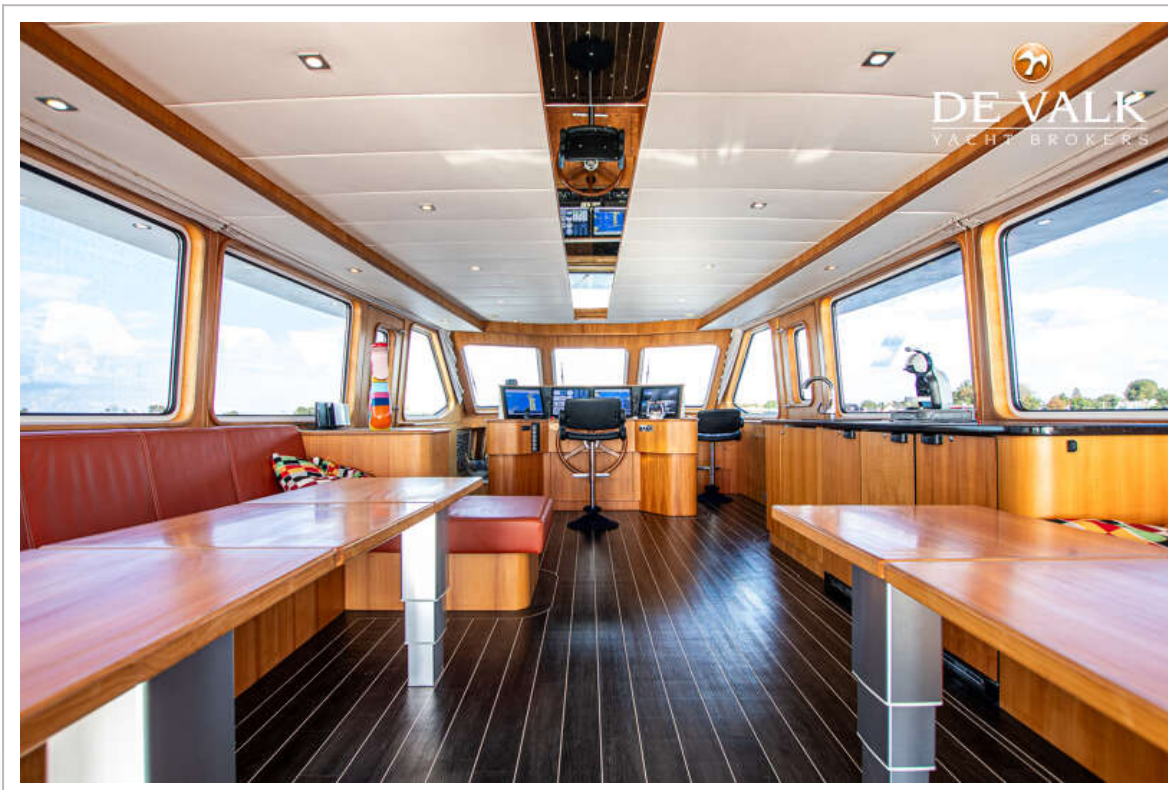
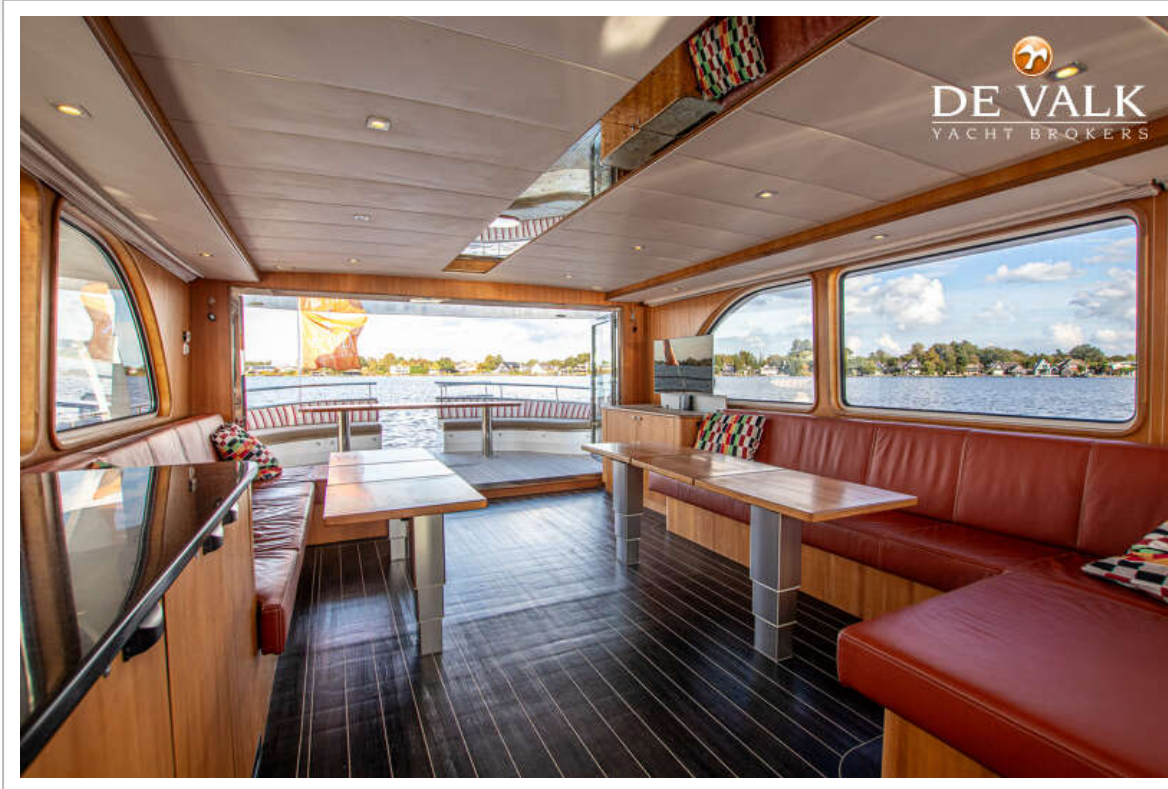
BENDIE IMPRESSIVE 2300



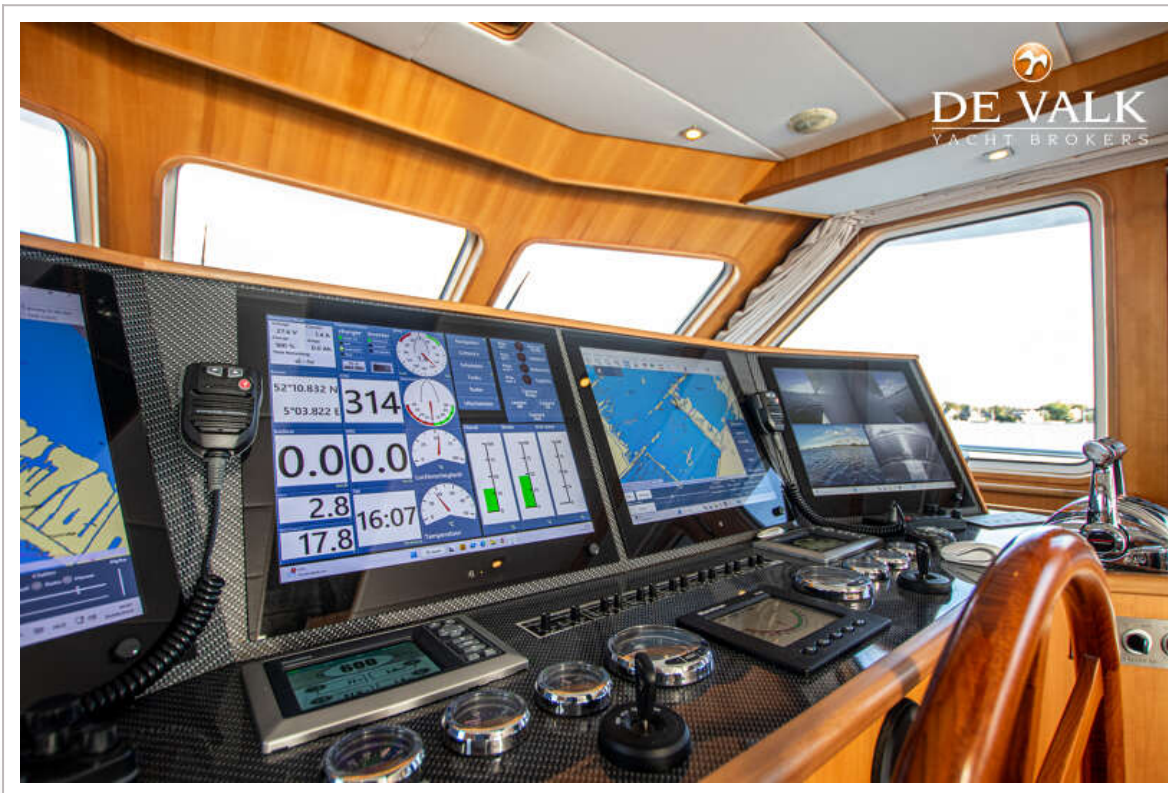
BENDIE IMPRESSIVE 2300



BENDIE IMPRESSIVE 2300



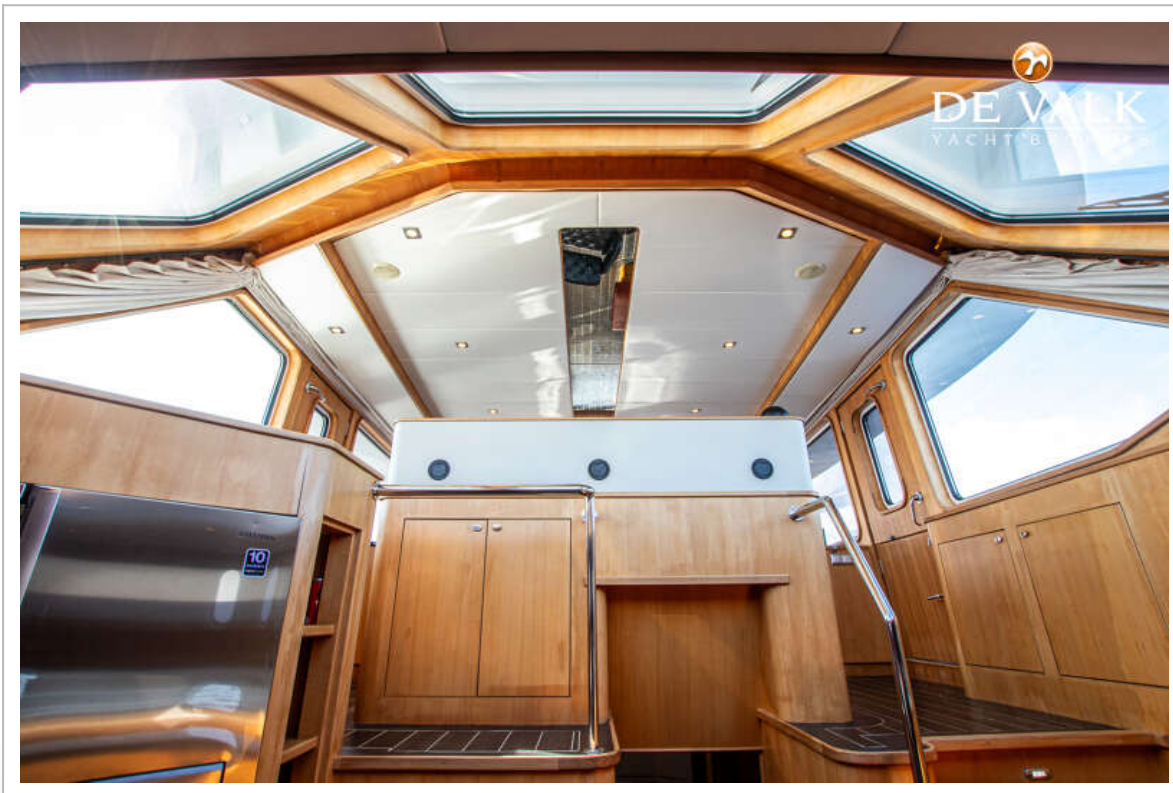
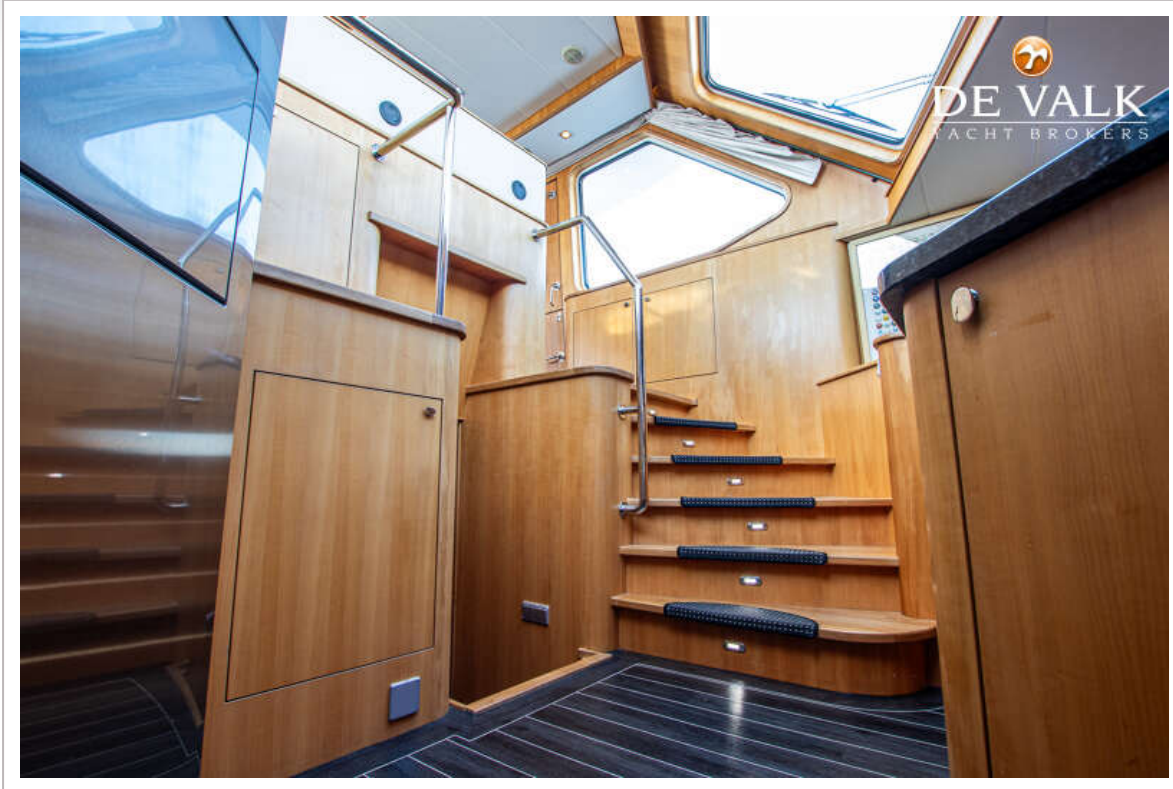
BENDIE IMPRESSIVE 2300



BENDIE IMPRESSIVE 2300



BENDIE IMPRESSIVE 2300



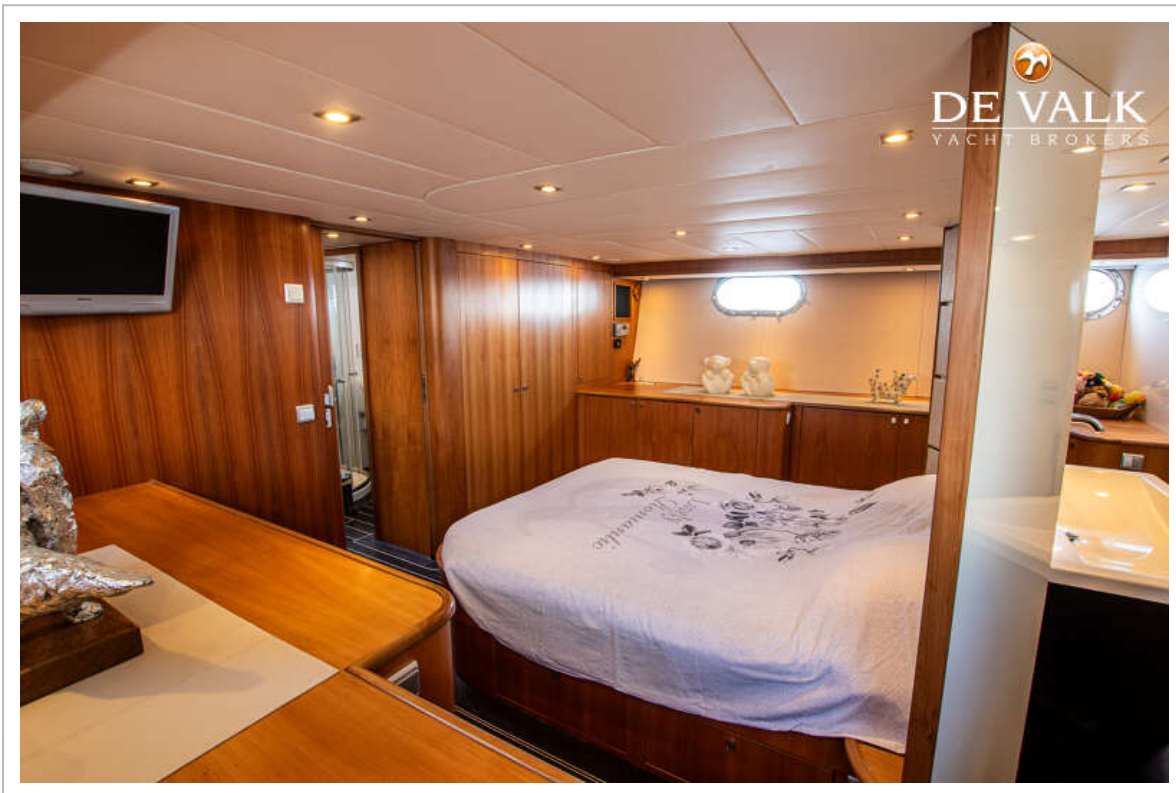
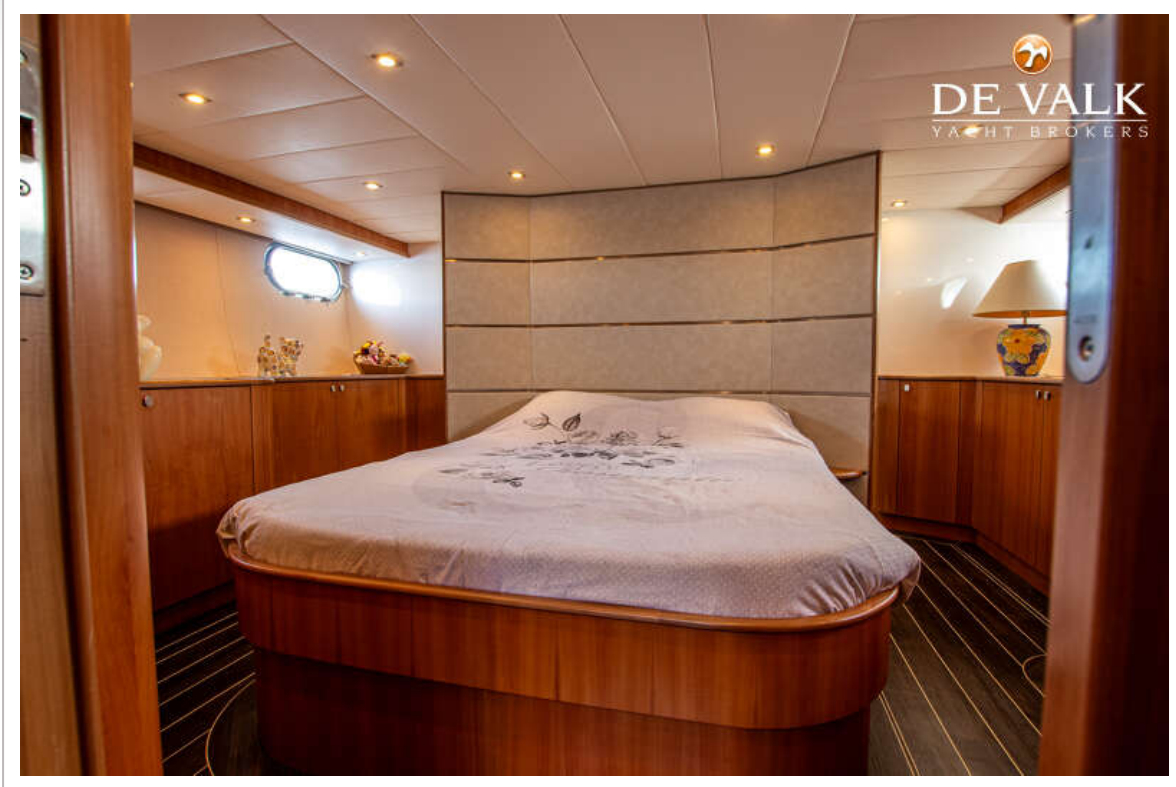
BENDIE IMPRESSIVE 2300



BENDIE IMPRESSIVE 2300



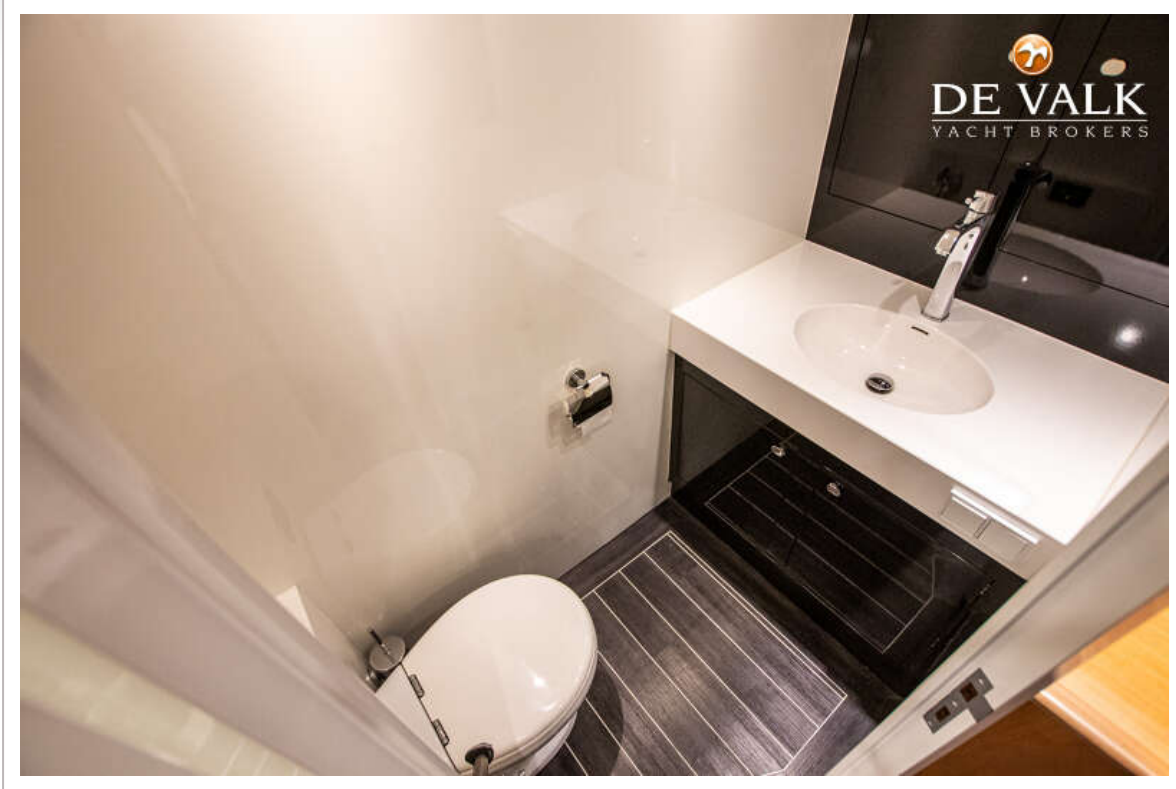
BENDIE IMPRESSIVE 2300



BENDIE IMPRESSIVE 2300



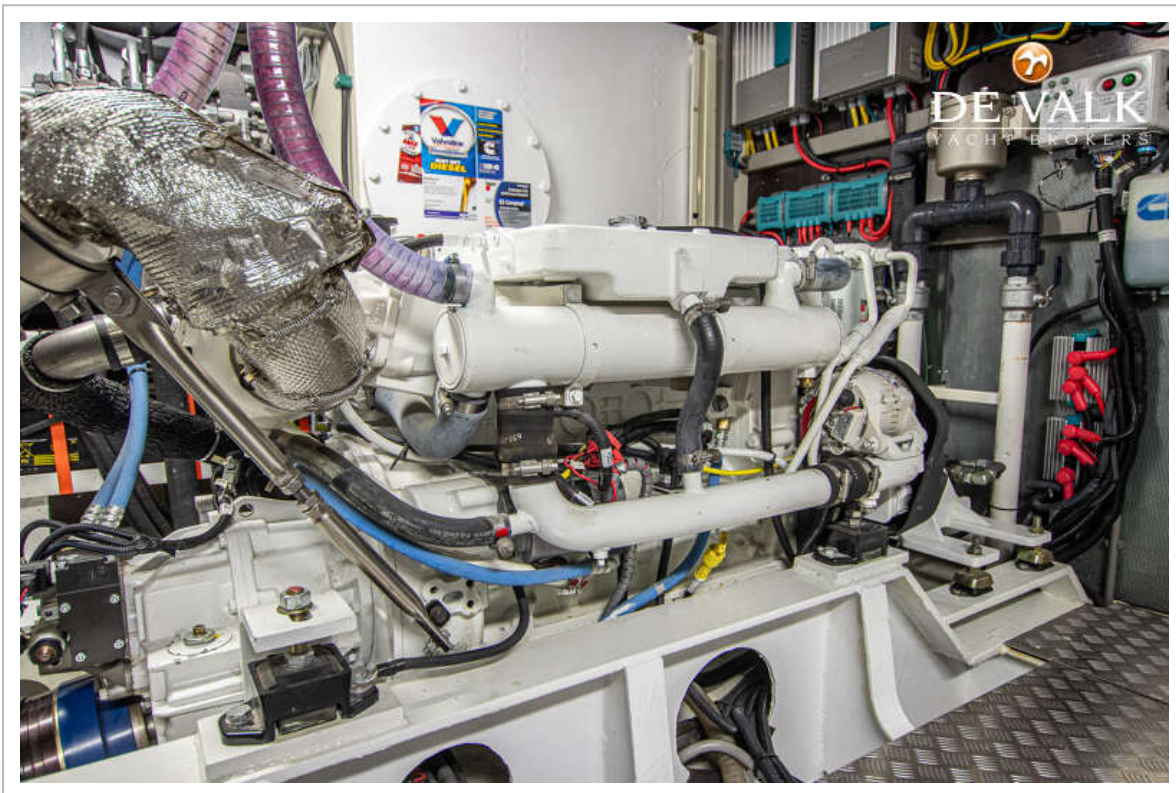
BENDIE IMPRESSIVE 2300



BENDIE IMPRESSIVE 2300



BENDIE IMPRESSIVE 2300



BENDIE IMPRESSIVE 2300

