



COLVIC SUNQUEST 43

COLVIC SUNQUEST 43

BROKER'S COMMENTS

This Sunquest 43 has been with the current owner since 1996. Has been well kept and in 2009 the interior was re-built and re-styled. Ample seating area with two dinettes. Good ownerscabin forward and guestcabin midships. One dinette can be converted into a double berth. Total sleeps six persons. Sturdy built and good grp quality.

Ger Bayens

SPECIFICATIONS

| | | | |
|---------------------|---------------------------------|----------------|------------------------------|
| Dimensions | 13.75 x 4.21 x 1.10 (m) | Builder | Colvic Craft |
| Built | 1989 | Cabins | 2 |
| Material | GRP | Berths | 6 |
| Engine(s) | 2 x Volvo Penta TAMD 61A diesel | Hp/Kw | 2 x 306.00 (hp), 224.91 (kw) |
| Asking price | sold (VAT) | Lying | at sales office |

CONTACT

| | | | |
|---------------------|--|------------------|------------------------|
| Sales office | De Valk Sint Annaland B.V. | Telephone | +31 (0)166 601 000 |
| Address | Koelhuisweg 4 4697 RM Sint Annaland NL | E-mail | sintannaland@devalk.nl |

DISCLAIMER

These particulars are given in good faith as supplied but cannot be guaranteed.



GENERAL

| | |
|-----------------------------|--------------------|
| Model | COLVIC SUNQUEST 43 |
| Type | motor yacht |
| LOA (m) | 13,75 |
| Beam (m) | 4,21 |
| Draft (m) | 1,10 |
| Air draft (m) | 5,17 |
| Headroom (m) | 1,92 |
| Year built | 1989 |
| Builder | Colvic Craft |
| Country | Great Britain |
| Designer | John Bennett |
| Displacement (t) | 11 |
| Hull material | GRP |
| Hull colour | white |
| Hull shape | deep-V |
| Superstructure material | GRP |
| Rubbing strake | rubber |
| Deck material | GRP |
| Cockpit deck finish | teak |
| Antifouling (year) | yes |
| Window frame | aluminum |
| Window material | tempered glass |
| Flybridge | yes |
| Radar arch | non collapsible |
| Fuel tank (litre) | 2 x 500 |
| Level indicator (fuel tank) | Defect |
| Freshwater tank (litre) | 1 x 750 |
| Greywater tank (litre) | For shower water |
| Wheel steering | hydraulic |
| Inside helm position | yes |



| | |
|-------------------------|---------------------------------|
| Flybridge helm position | hydraulic |
| Extra info | Loa = 13,75 Hull length = 13,11 |

ACCOMMODATION

| | |
|-------------------------------|--|
| Cabins | 2 |
| Berths | 6 |
| Interior | walnut |
| Floor | carpet |
| Open cockpit | yes |
| Pilot house/deck saloon | yes |
| Headroom saloon (m) | 1,92 / 2 mtr |
| Dinette to convert into berth | yes |
| Sliding door to cockpit | yes |
| Galley | yes |
| Countertop | plastic |
| Sink | stainless steel |
| Cooker | electric Gaggenau 2 burner |
| Microwave | Bestron |
| Fridge | with freezer compartment 2 x Coolmatic 24v |
| Hot water system | 220V + engine Boiler |
| Water pressure system | electrical |
| Owners cabin | double bed |
| Bed length (m) | 1,95 x 1,47 |
| Wardrobe | hanging and drawers |
| Bathroom | en suite |
| Toilet | en suite |
| Toilet system | electric |
| Wash basin | in the bathroom |
| Shower | en suite |
| Guest cabin 1 | double bed |
| Bed length (m) | 1,84 x 1,34 |



| | |
|---------------|---|
| Wardrobe | hanging and drawers |
| Bathroom | yes |
| Toilet | en suite |
| Toilet system | electric |
| Wash basin | in the bathroom |
| Extra info | Interior was partially rebuilt and restyled in 2009 |

MACHINERY

| | |
|--------------------------|---------------------------|
| No of engines | 2 |
| Make | Volvo Penta |
| Type | TAMD 61A |
| HP | 306,00 |
| kW | 224,91 |
| Fuel | diesel |
| Year installed | 1989 |
| Maximum speed (kn) | 28 |
| Cruising speed (kn) | 14 |
| Consumption (l/hr) | 42 |
| Engine hours | 1500 |
| Engine cooling system | freshwater heat exchanger |
| Drive | shaft |
| Engine controls | bowden cable |
| Gearbox | hydraulic ZF Marine |
| Exhaust | watercooled |
| Propeller type | fixed |
| Propeller blades | 4-blades |
| Propeller shaft material | stainless steel |
| Shaft lubrication | water |
| Electric bilge pump | 3 x |
| Electrical installation | 12/24/220v |
| Start battery | 3 x 108amp |



| | |
|-----------------|----------------------|
| Service battery | 3 x 108amp |
| Battery charger | Mastervolt 24v/50amp |
| Shorepower | yes |
| Trimtabs | yes |

NAVIGATION

| | |
|------------------------|------------------------------|
| Compass | Plastimo |
| Compass on flybridge | Plastimo |
| Fish finder | Apelco XCD |
| VHF | on flybridge Shipmate RS8300 |
| Autopilot | Neco |
| Rudder angle indicator | VDO |
| Searchlight | yes |

EQUIPMENT

| | |
|----------------------------|--------------------------|
| Cockpit cushions | yes |
| Cockpit table | yes |
| Bathing platform | yes |
| Boarding ladder | stainless steel |
| Transom door | yes |
| Deck shower | yes |
| Anchor | Bruce |
| Anchor chain | yes |
| Windlass | electrical |
| Capstan | on anchor winch |
| Davits | stainless steel Whittall |
| Sea railing | stainless steel |
| Grab rail (superstructure) | stainless steel |
| Pulpit | yes |
| Lifejackets | yes |
| Wiper | 3 x |



| | |
|-------------------|-------------------|
| Horn | electric |
| Fenders | yes |
| Mooring lines | yes |
| TV | Philips + Samsung |
| TV receiver | KVH Trackvision |
| Fire extinguisher | yes |



COLVIC SUNQUEST 43



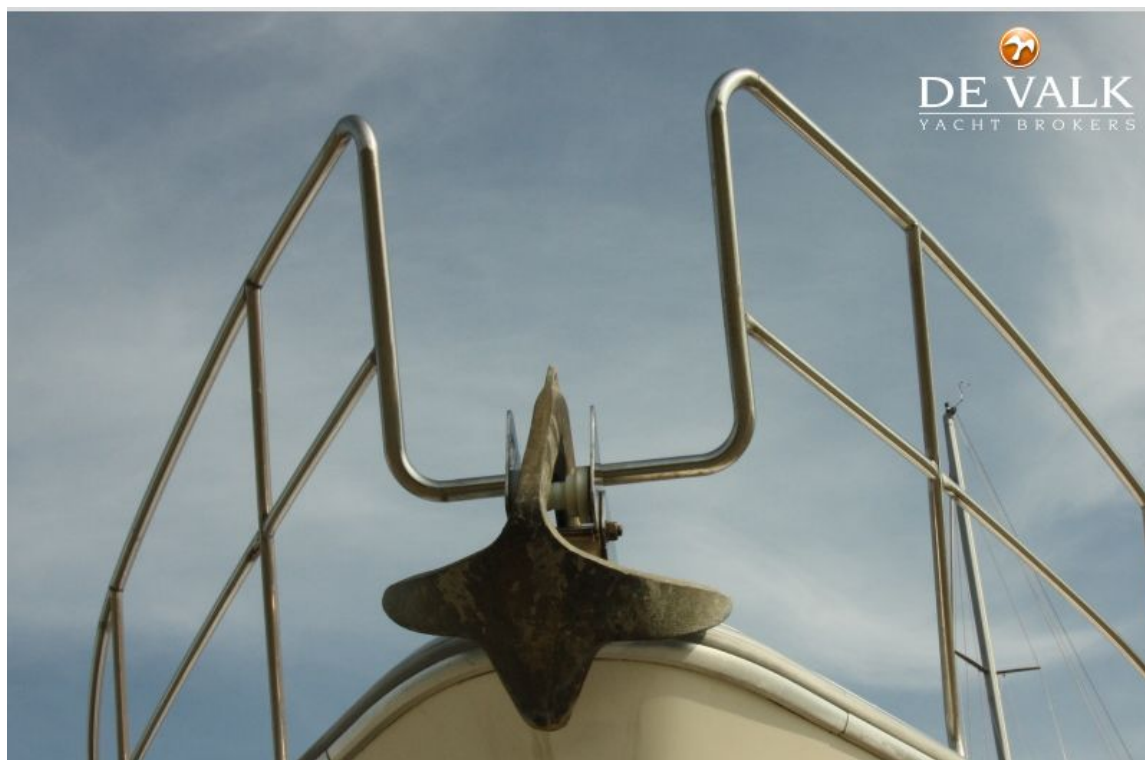
COLVIC SUNQUEST 43



COLVIC SUNQUEST 43



COLVIC SUNQUEST 43



COLVIC SUNQUEST 43



COLVIC SUNQUEST 43



COLVIC SUNQUEST 43



COLVIC SUNQUEST 43





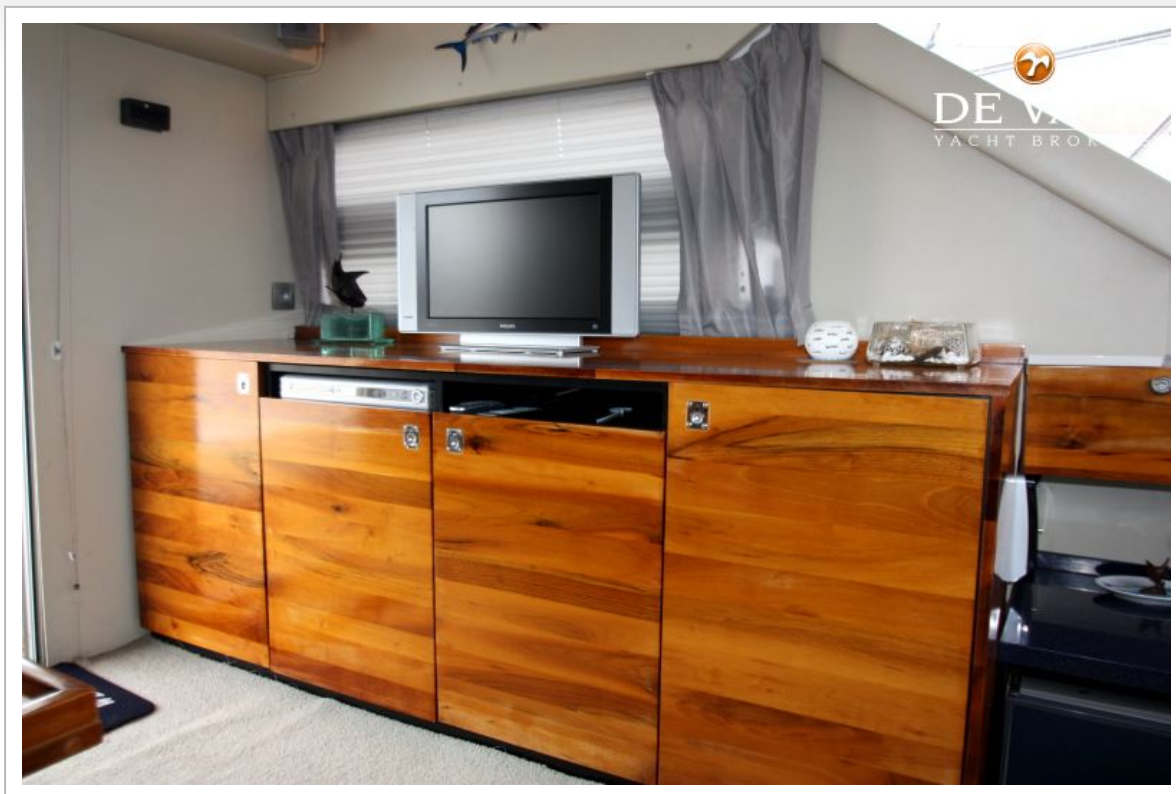
COLVIC SUNQUEST 43



COLVIC SUNQUEST 43



COLVIC SUNQUEST 43



COLVIC SUNQUEST 43



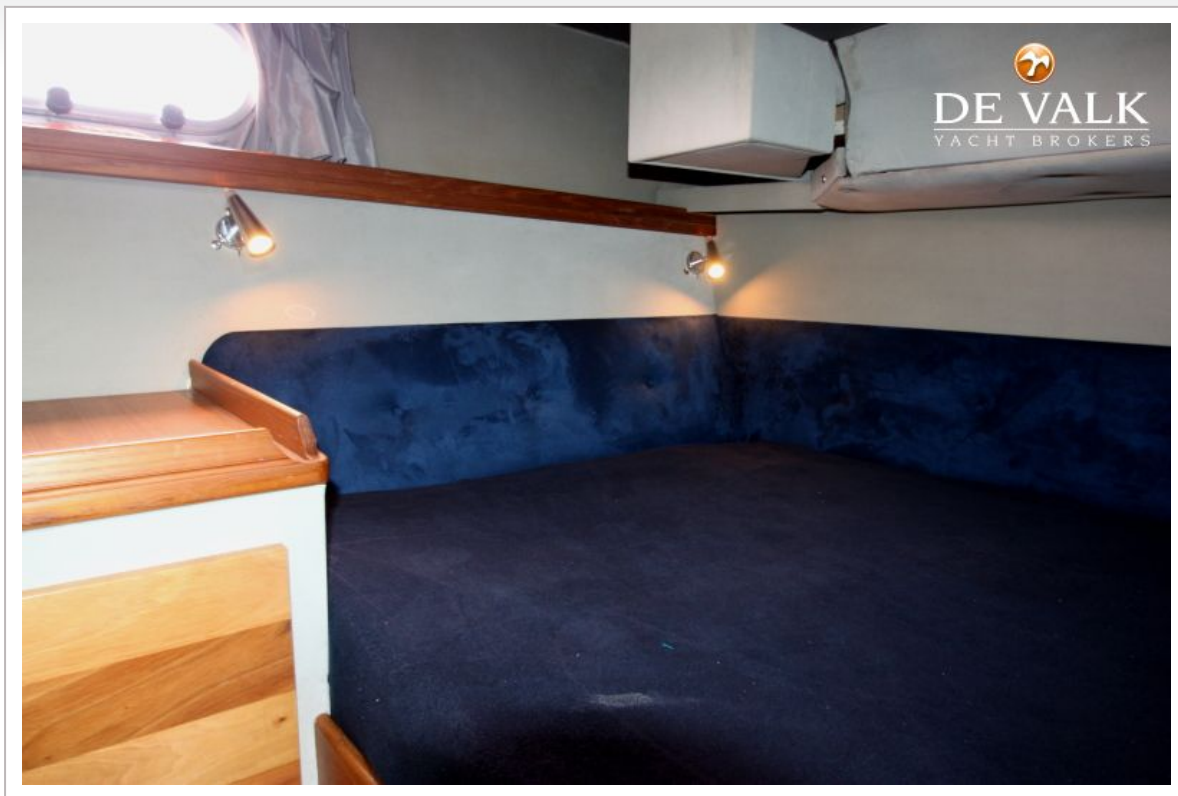
COLVIC SUNQUEST 43



COLVIC SUNQUEST 43

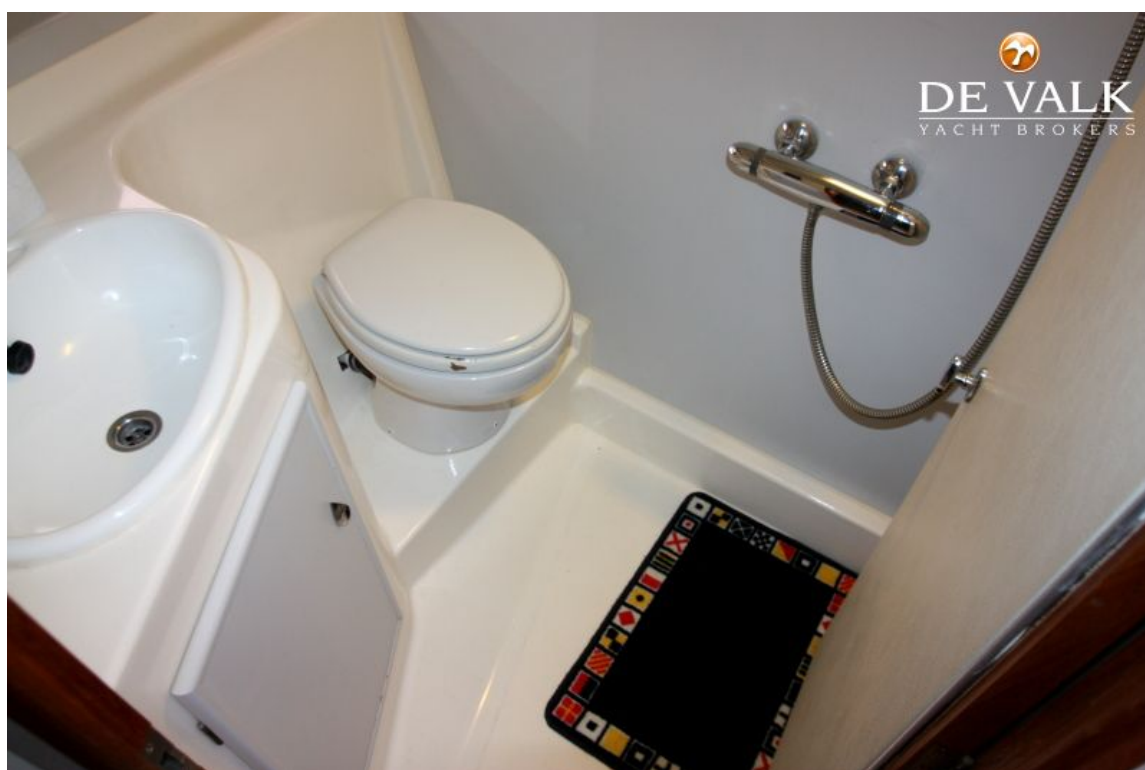




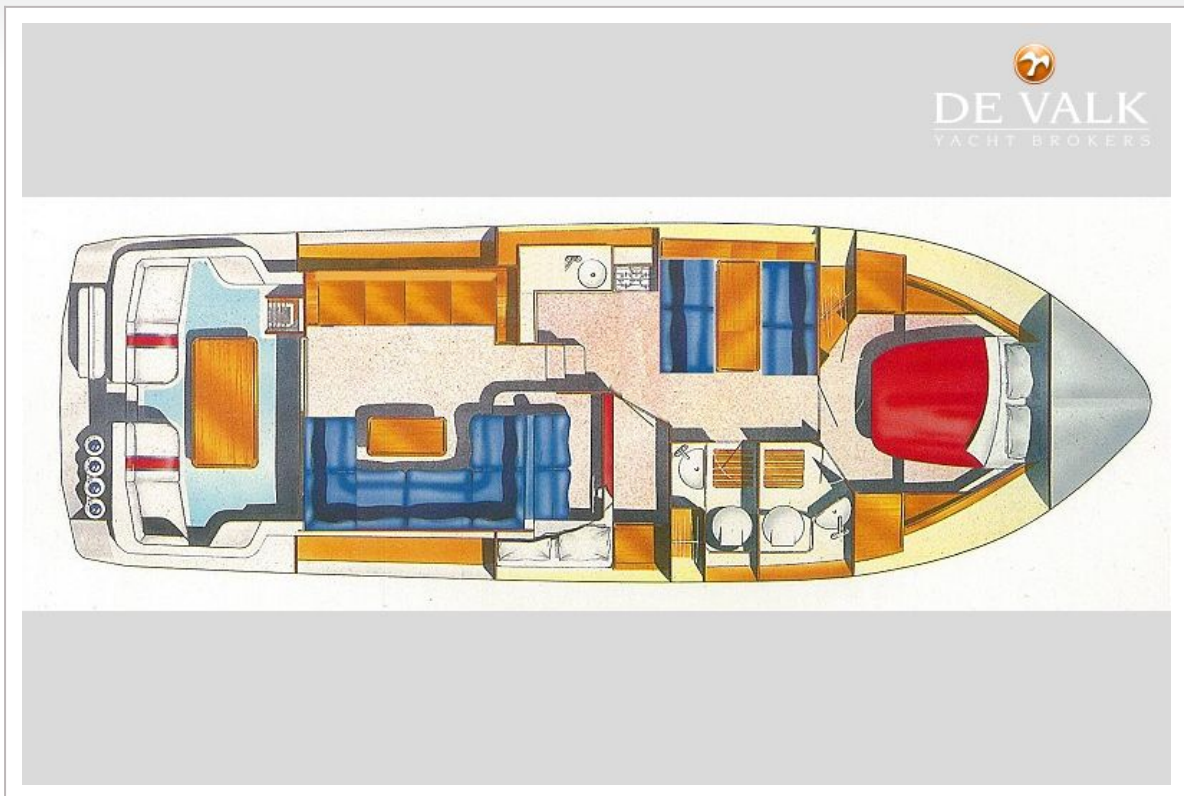


COLVIC SUNQUEST 43





COLVIC SUNQUEST 43





COLVIC SUNQUEST 43

