



DE VALK
YACHT BROKERS



VAN DE STADT FORNAS 41



DE VALK
YACHT BROKERS

VAN DE STADT FORNA 41

BROKER'S COMMENTS

Van de Stadt Design, no introduction needed amongst discerning yachtsman worldwide. The Forna model was the next logical step with the latest design innovations. Well balanced, safe and reliable sea-keeping and an absolute joy to sail in both light and more adverse conditions. This custom Forna has more headroom, interior and stowage space with extra speed as a bonus. Her composite construction is light, yet strong and is ideal for custom built yachts. Excellent materials and hardware were used.

Marc Weijenberg

SPECIFICATIONS

Dimensions	12.30 x 3.65 x 1.50 (m)	Builder	Owner & BJ Bats
Built	2007	Cabins	2
Material	Composite	Berths	3
Engine(s)	1 x Lombardini LD 1404M diesel	Hp/Kw	40.00 (hp), 29.40 (kw)
Asking price	sold (VAT)	Lying	at sales office

CONTACT

Sales office	De Valk Sint Annaland B.V.	Telephone	+31 (0)166 601 000
Address	Koelhuisweg 4 4697 RM Sint Annaland NL	E-mail	sintannaland@devalk.nl

DISCLAIMER

These particulars are given in good faith as supplied but cannot be guaranteed.



GENERAL

Model	VAN DE STADT FORNA 41
Type	sailing yacht
LOA (m)	12,30
LWL (m)	10,65
Beam (m)	3,65
Draft (m)	1,50
Air draft (m)	18,00
Headroom (m)	1,95
Year built	2007
Builder	Owner & BJ Bats
Country	The Netherlands
Designer	Van de Stadt & Partners
Displacement (t)	7,5
Ballast (tonnes)	lead in steel 3,5
CE norm	A
Hull material	composite
Hull colour	green
Hull shape	round-bilged
Keel type	fin keel
Superstructure material	composite
Deck material	composite
Deck finish	anti-slip paint
Cockpit deck finish	synthetic teak Flexiteak
Dorades	2
Window frame	aluminium
Window material	polycarbonate
Deckhatch	yes
Portholes	aluminium
Fuel tank (litre)	stainless steel 1 x 148
Freshwater tank (litre)	epoxy 250+200



Blackwater tank (litre)	polyethylene 80
Blackwater tank extraction	deck extraction
Wheel steering	mechanical Jefa
Emergency tiller	yes
Extra info	Hull constructed in epoxy-Red Cedar-epoxy composite Deck, superstructure and cockpit constructed in epoxy-foam-epoxy. Hull has approx. 10% more volume, 400kg extra lead ballast and apporx. 0,50 mtr more mastheight. Adaptations in the design were approved by the designer

ACCOMMODATION

Cabins	2
Berths	3
Interior	Modern white panels with teak trim
Floor	woodprint
Saloon	yes
Headroom saloon (m)	1,95
Heating	stove diesel Dickinson Newport
Chart table	yes
Galley	yes
Countertop	plastic
Sink	stainless steel 2 x
Cooker	calor gas Seaward Gourmet 3 burner
Oven	Seaward
Gas alarm	BEP
Fridge	Isotherm 12v (80 ltr)
Water pressure system	manual Footpump
Crockery	yes
Owners cabin	double bed Forward/voor/vorne
Bed length (m)	2,00 x 1,40
Wardrobe	shelves and hanging
Bathroom	1



Toilet	shared
Toilet system	manual
Wash basin	in the bathroom
Guest cabin 1	single bed Aft/achter/hinten
Bed length (m)	1,94 x 0,66
Wardrobe	hanging
Extra info	Interior has been finished for 75% and offers the new owner lots of choices for finalizing. Improved headroom and cabinspace (incl. double bed forward) as to the original 37 layout.

MACHINERY

No of engines	1
Make	Lombardini
Type	LD 1404M
HP	40,00
kW	29,40
Fuel	diesel
Year installed	2006
Maximum speed (kn)	8
Cruising speed (kn)	6,5
Consumption (l/hr)	3
Engine hours	435
Engine cooling system	freshwater heat exchanger
Drive	shaft
Engine controls	bowden cable
Gearbox	mechanical
Exhaust	watercooled
Thrust bearing	+ Python drive
Propeller type	feathering Maxprop
Propeller blades	2
Propeller shaft material	stainless steel
Shaft lubrication	water



Manual bilge pump	yes
Electrical installation	12/220v
Start battery	1 x 70amp AGM
Service battery	2 x 160amp AGM
Windlass battery	1 x 70amp AGM
Battery monitor	Nasa BM-1
Battery charger	Sterling 12v/40amp
Wind generator	Airmarine approx. 400 watt
Solar panel	1 x 80 watt
Shorepower	with cable

NAVIGATION

Compass	Plastimo Olympic 135
Electric compass	Via autopilot
Depth sounder	Tacktick
Log	Tacktick
Windset	Tacktick
Fish finder	Navman 8048
VHF	+ Atis Navman 7110
VHF handheld	Icom M30
Autopilot	Navman G3100
Radar/GPS/plotter	Navman 8048
Electronic chart(s)	1 x
AIS transponder	yes

EQUIPMENT

Sprayhood with grab rail	yes
Cockpit cushions	yes
Boarding ladder	stainless steel
Anchor	Spade-type
Anchor chain	60 mtr



Windlass	electrical Lofrans
Sea railing	stainless steel
Grab rail (superstructure)	teak
Pushpit	yes
Pulpit	yes
Life raft	valise (or bag) Seasafe
Life raft (pers)	4
Last life raft survey	03-2012
Lifejackets	2 x
Safety harness	3 x
Lifebuoy	yes
Safety lines on deck	yes
Radar reflector	yes
Fenders	yes
Mooring lines	yes
Clock - barometer	yes
Fire extinguisher	1x
Extra info	Always covered winterstorage. Extra riding-sail for at anchor.

RIGGING

Rigging	sloop-cutter
Standing rigging	Dyform
Brand mast	Holland Spar
Material mast	aluminium coated
Spreaders	2 x
Mainsail cover	yes
Fully battened mainsail	Hagoort Flex Pen Cruising (2007)
Jib	Hagoort 105% Aramid (2013)
Genoa furler	Profurl
Genoa cover	yes
Gennaker	with squeezer Hagoort 97m2 (2008)



Booster	furling Code-Zero Hagoort (2011)
Staysail	Hagoort 12m2 (2007)
Removable innerforestay	PBO
Reefing System	slabreefing
Backstay adjuster	mechanical
Boomvang	gasspring
Primary sheet winch	2 x Harken 53.2 ST
Secondary sheet winch	2 x Harken 42.2 ST
Halyard winches	2 x Harken 32.2
Isolated backstay	yes



VAN DE STADT FORNA 41



VAN DE STADT FORNA 41



VAN DE STADT FORNA 41



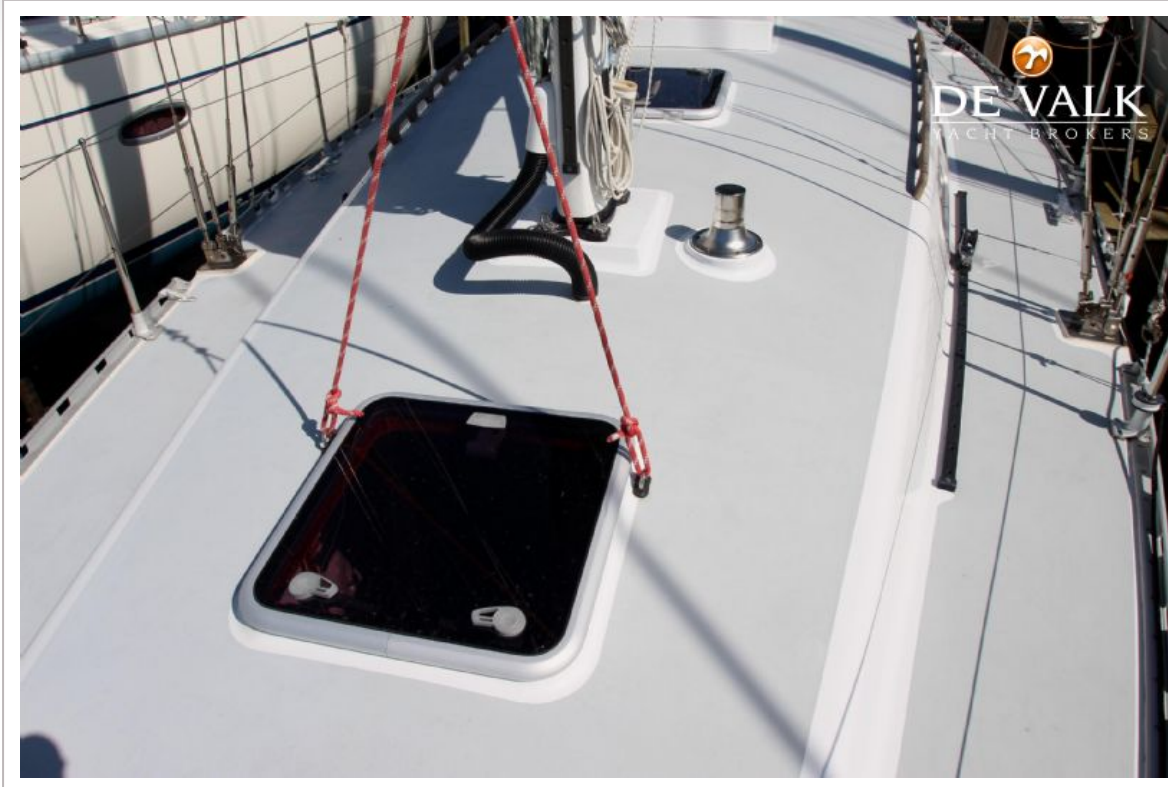
VAN DE STADT FORNA 41



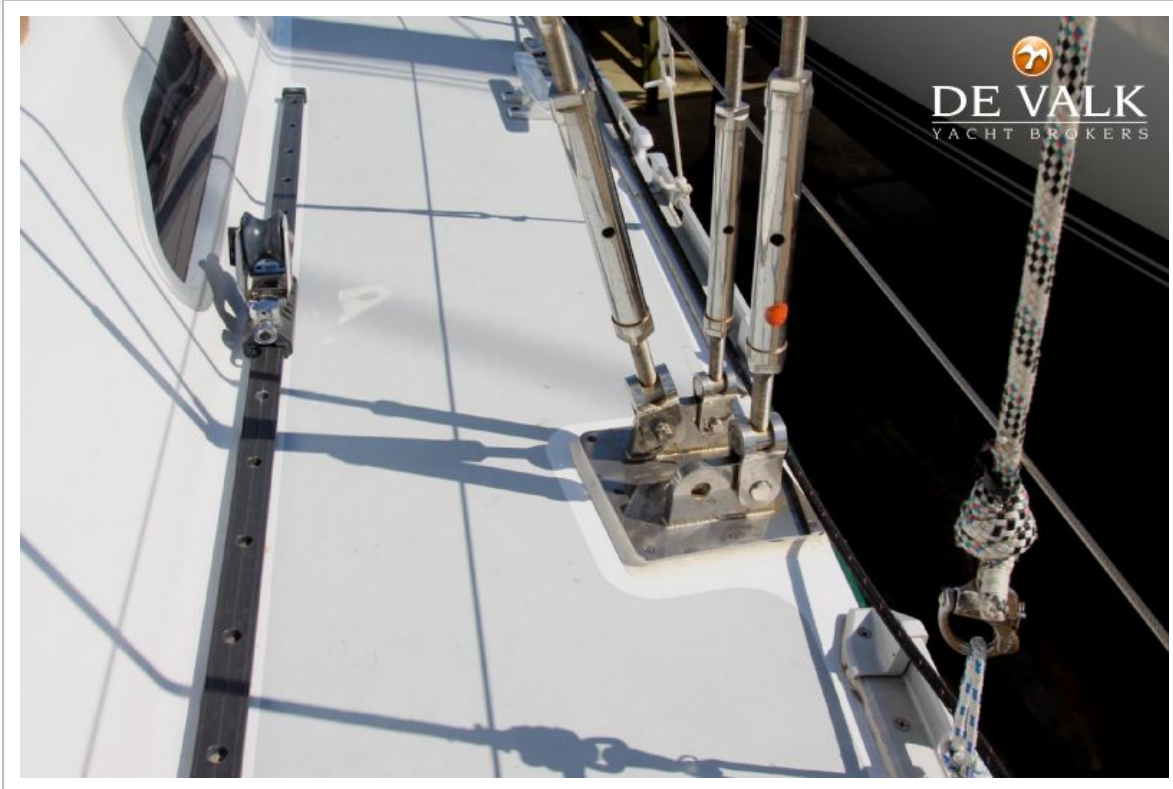
VAN DE STADT FORNA 41



VAN DE STADT FORNA 41



VAN DE STADT FORNA 41





VAN DE STADT FORNA 41



VAN DE STADT FORNA 41



VAN DE STADT FORNA 41



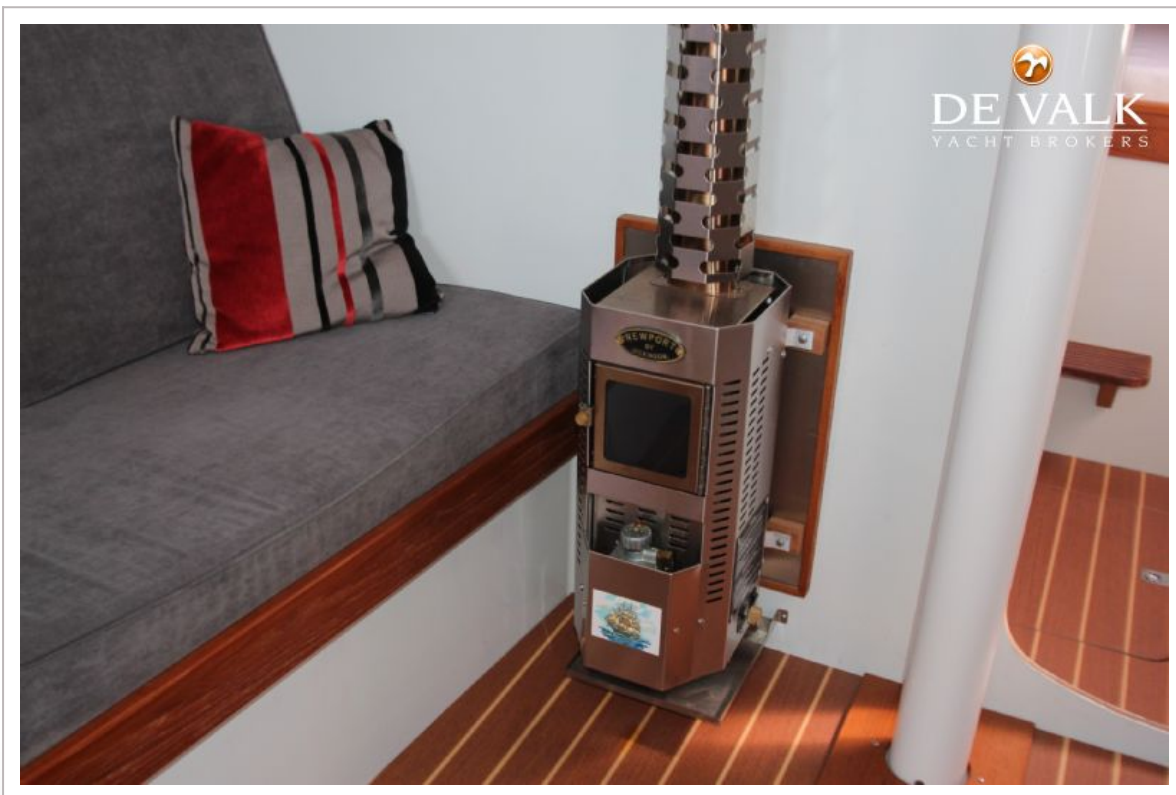
VAN DE STADT FORNA 41



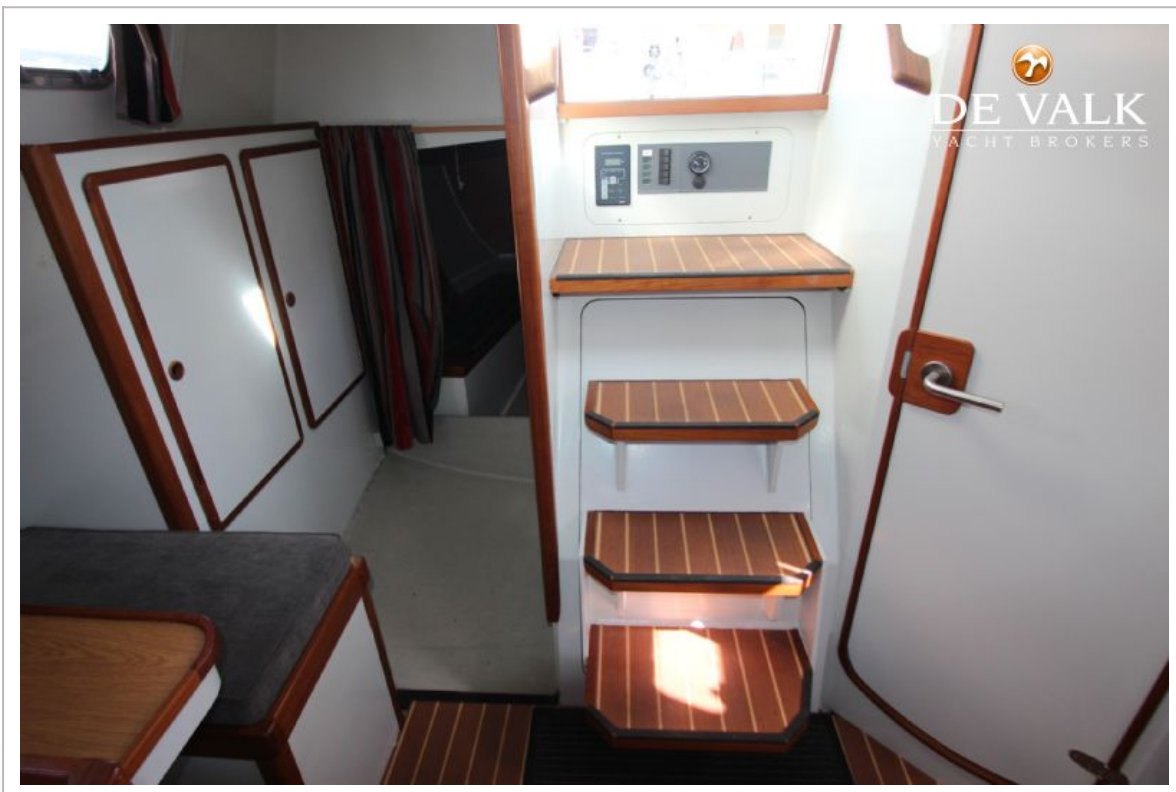
VAN DE STADT FORNA 41



VAN DE STADT FORNA 41



VAN DE STADT FORNA 41



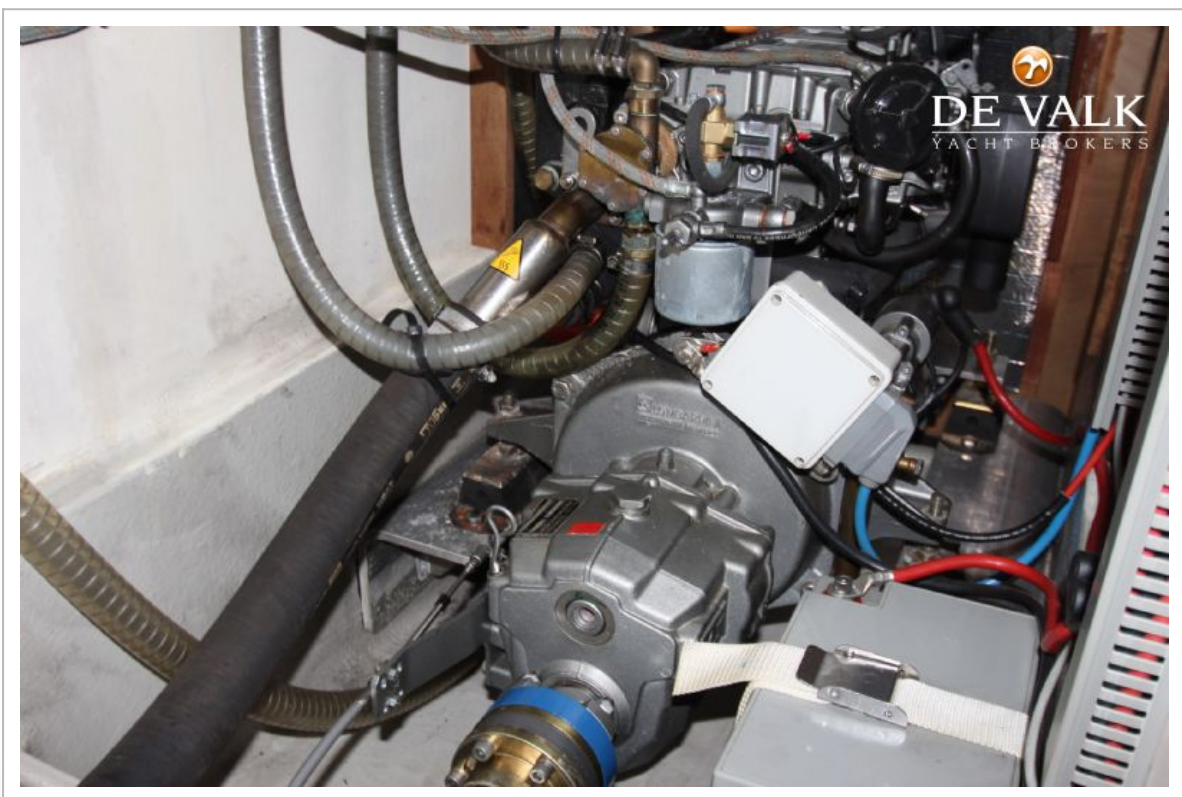
VAN DE STADT FORNA 41



VAN DE STADT FORNA 41



VAN DE STADT FORNA 41





VAN DE STADT FORNA 41

