



DE VALK
YACHT BROKERS



GRAND BANKS 32



DE VALK
YACHT BROKERS

BROKERAGE | CHARTER | BERTHS | FINANCE | INSURANCE | YACHT MANAGEMENT

BROKER'S COMMENTS

Popular motor yacht GRAND BANKS 32 from American Marine. Excellent design, sea keeping and renowned craftsmanship and quality. Pilothouse/deck salon with panoramic view and easy access to the covered aft deck. Inviting and comfortable Birma teak interior with good owner cabin forward with ensuite facilities. Engine room is clean and tidy and so is the rest. Covered storage in wintertime and well maintained. Ideal for longer stays onboard and moderate headway so French canals are possible.

Marc Weijenberg

SPECIFICATIONS

Dimensions	9.73 x 3.50 x 1.14 (m)	Builder	Grand Banks American Marine
Built	1988	Cabins	1
Material	GRP	Berths	4
Engine(s)	1 x Ford Lehman SP135 diesel	Hp/Kw	135.00 (hp), 99.22 (kw)
Asking price	sold (VAT)	Lying	at sales office

CONTACT

Sales office	De Valk Sint Annaland B.V.	Telephone	+31 (0)166 601 000
Address	Koelhuisweg 4 4697 RM Sint Annaland NL	E-mail	sintannaland@devalk.nl

DISCLAIMER

These particulars are given in good faith as supplied but cannot be guaranteed.



GENERAL

Model	GRAND BANKS 32
Type	motor yacht
LOA (m)	9,73
Beam (m)	3,50
Draft (m)	1,14
Air draft (m)	3,50
Headroom (m)	1,90
Year built	1988
Builder	Grand Banks American Marine
Country	Singapore
Designer	K. Smith
Displacement (t)	7,7
Hull material	GRP
Hull colour	white
Hull shape	hard chine
Superstructure material	GRP
Rubbing strake	wood
Deck material	GRP
Deck finish	teak
Superstructure deck finish	teak
Cockpit deck finish	teak
Window material	glass
Deckhatch	yes
Portholes	yes
Flybridge	yes
Flybridge cover	yes
Mast can be lowered	manual
Steadying sail with mast	yes
Fuel tank (litre)	steel 2 x 473
Freshwater tank (litre)	steel 1 x 416



Blackwater tank (litre)	polyethylene 1 x 90
Blackwater tank extraction	deck extraction + pump
Wheel steering	cable steering
Flybridge helm position	cable steering
Emergency tiller	yes
Extra info	Aft deck cover Grand Banks Europe style in grp with removable vinyl side panels, added in 2004

ACCOMMODATION

Cabins	1
Berths	4
Interior	teak
Floor	teak
Aft deck	yes
Pilot house/deck saloon	yes
Saloon	with L-shape settee
Headroom saloon (m)	1,90
Heating	diesel ducted hot air Eberspacher D4 (2006)
Convertible berth	via settee in salon 1,84 x 1,05 mtr
Opening door to aft deck	yes
Galley	yes
Countertop	plastic
Sink	stainless steel
Cooker	calor gas 3 burner
Oven	Cramer
Fridge	with freezer compartment 12v Waeco
Hot water system	220V + engine
Water pressure system	electrical
Owners cabin	v-bed
Bed length (m)	2,00 x 1,00 (0,83)
Wardrobe	hanging and drawers



Bathroom	en suite
Toilet	en suite
Toilet system	manual
Wash basin	in the bathroom
Shower	en suite

MACHINERY

No of engines	1
Make	Ford Lehman
Type	SP135
HP	135,00
kW	99,22
Fuel	diesel
Year installed	1988
Maximum speed (kn)	9
Cruising speed (kn)	6
Consumption (l/hr)	5
Engine hours	2700
Engine cooling system	freshwater heat exchanger
Drive	shaft
Engine controls	bowden cable
Gearbox	mechanical Velvet Drive
Bowthruster	electric Cramm
Exhaust	watercooled
Propeller type	fixed
Propeller blades	4
Propeller shaft material	stainless steel
Shaft lubrication	grease
Manual bilge pump	yes
Electric bilge pump	yes
Electrical installation	12/220v



Start battery	1 x
Service battery	2 x
Battery monitor	yes
Battery charger	Sterling 12v/20 amp
Inverter	Mastervolt 12v/2000watt
Shorepower	with cable
Extra info	twin fuel filter system

NAVIGATION

Compass	needs service Danforth
Compass on flybridge	Plastimo
Depth sounder	Stowe
Log	Stowe
VHF	+ flybridge connection Shipmate RS8300
Autopilot	+ remote Raymarine ST7001
Radar	Raymarine SL70C Pathfinder
Searchlight	yes

EQUIPMENT

Bimini	yes
Sun awning	for windows
Bathing platform	yes
Boarding ladder	yes
Deck shower	hot+cold
Anchor	Brittany
Anchor chain	yes
Windlass	electrical Lofrans + remote control
Deck wash	yes
Davits	stainless steel
Sea railing	teak
Grab rail (superstructure)	teak



Railing side opening gates	yes
Pushpit	yes
Pulpit	yes
Lifebuoy	yes
Wiper	3 x
Fenders	yes
Mooring lines	yes
Clock - barometer	yes





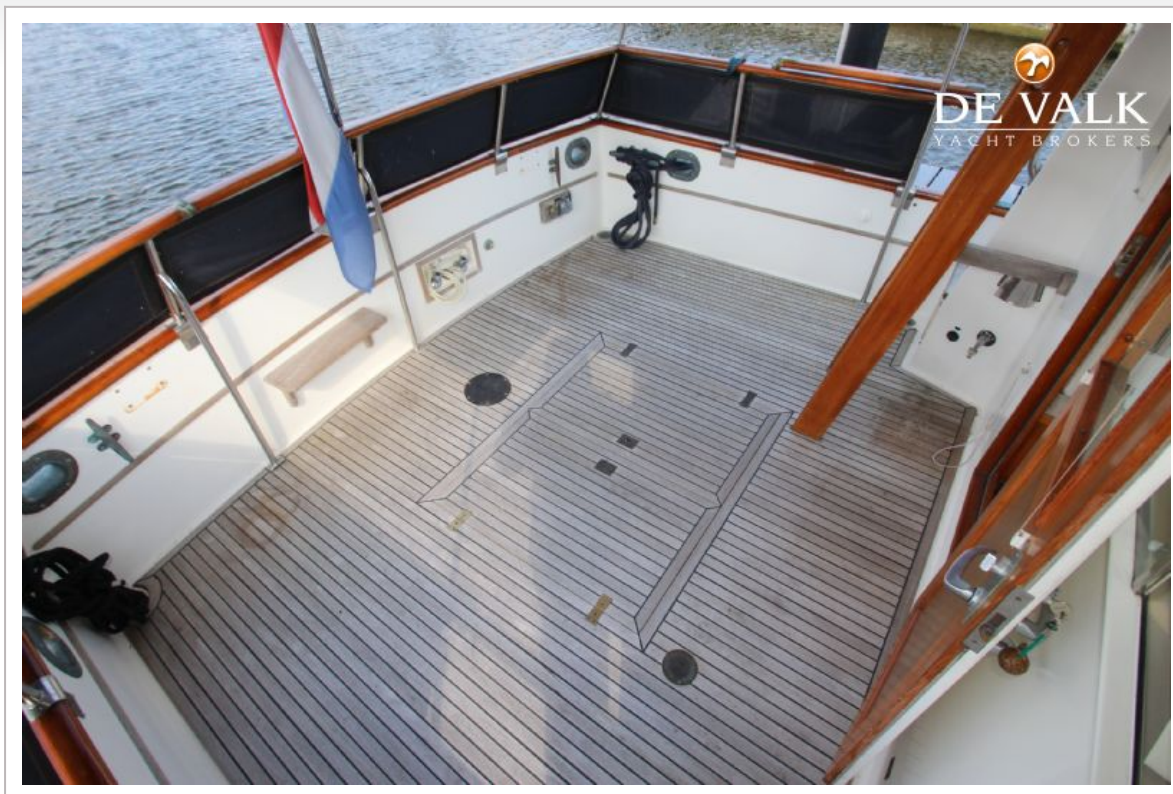


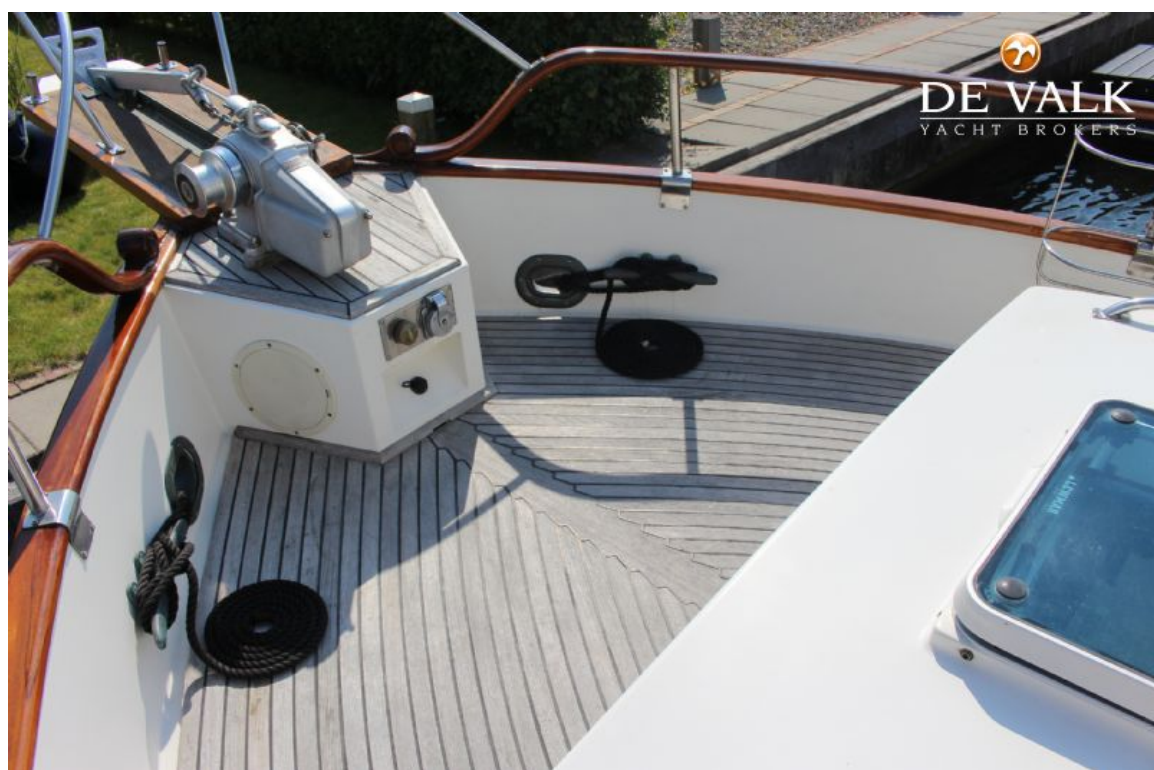
GRAND BANKS 32

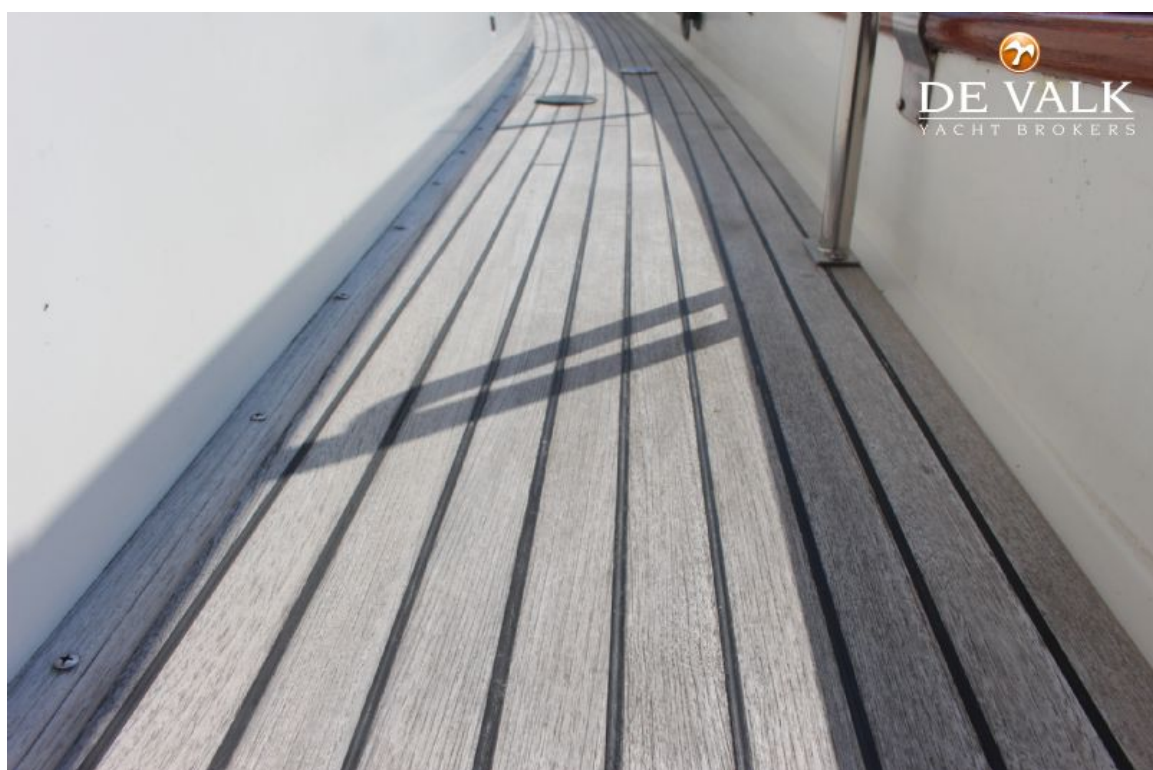




GRAND BANKS 32



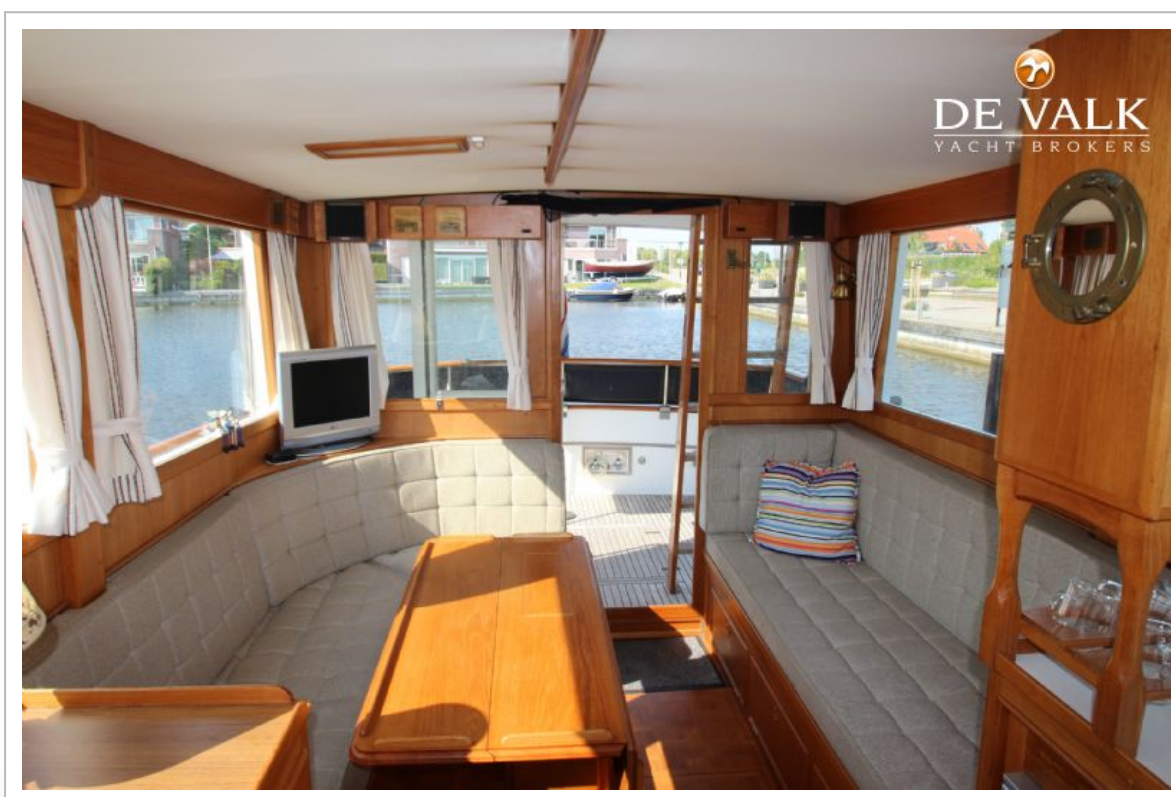
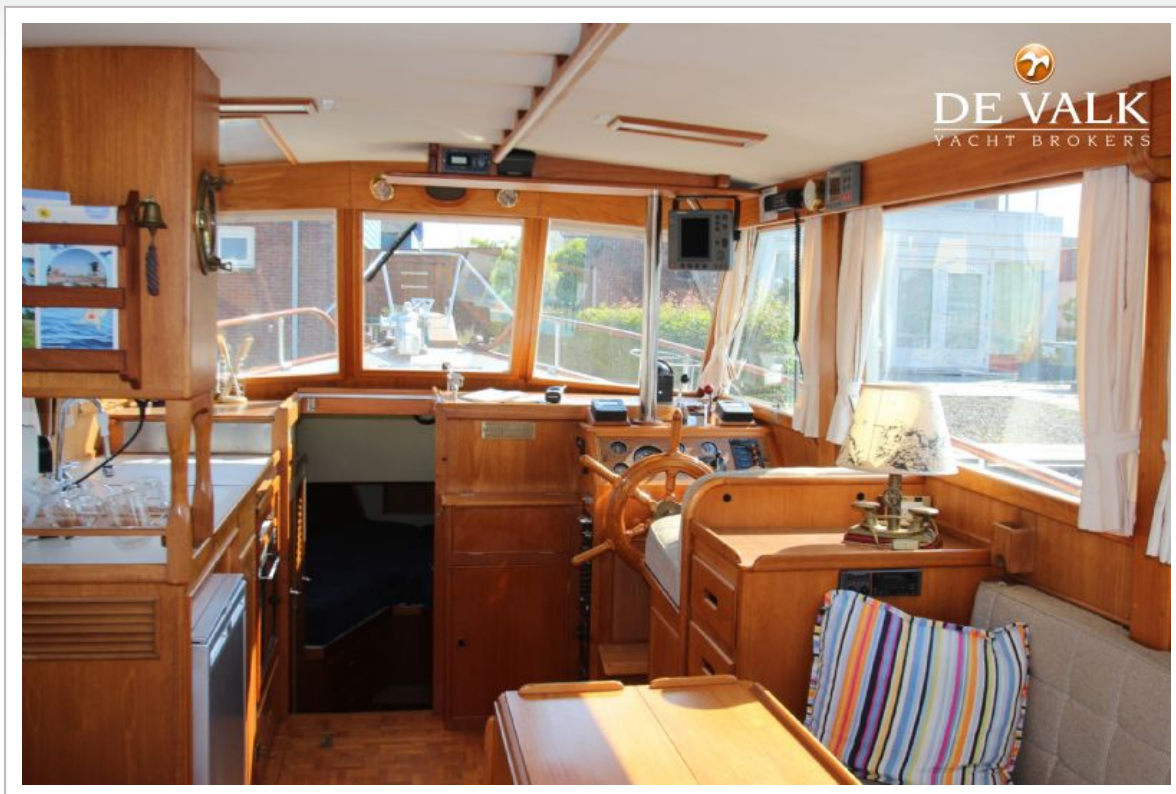
















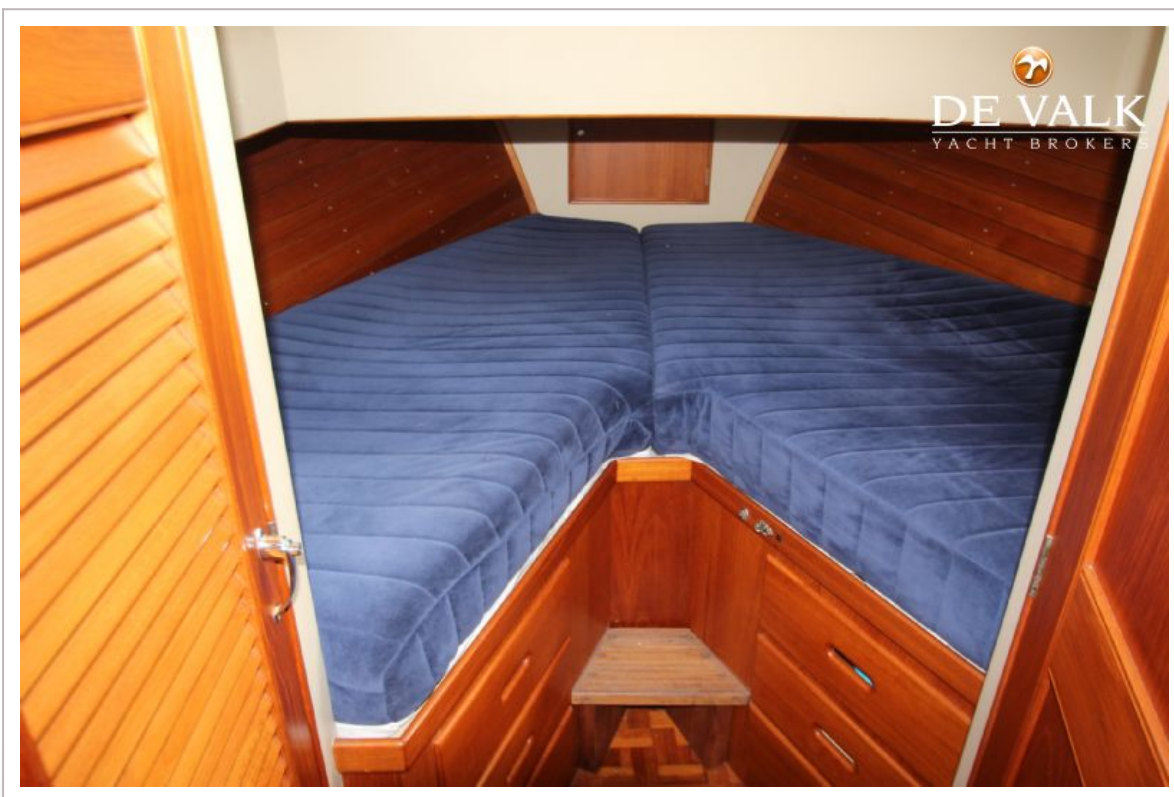
GRAND BANKS 32



GRAND BANKS 32



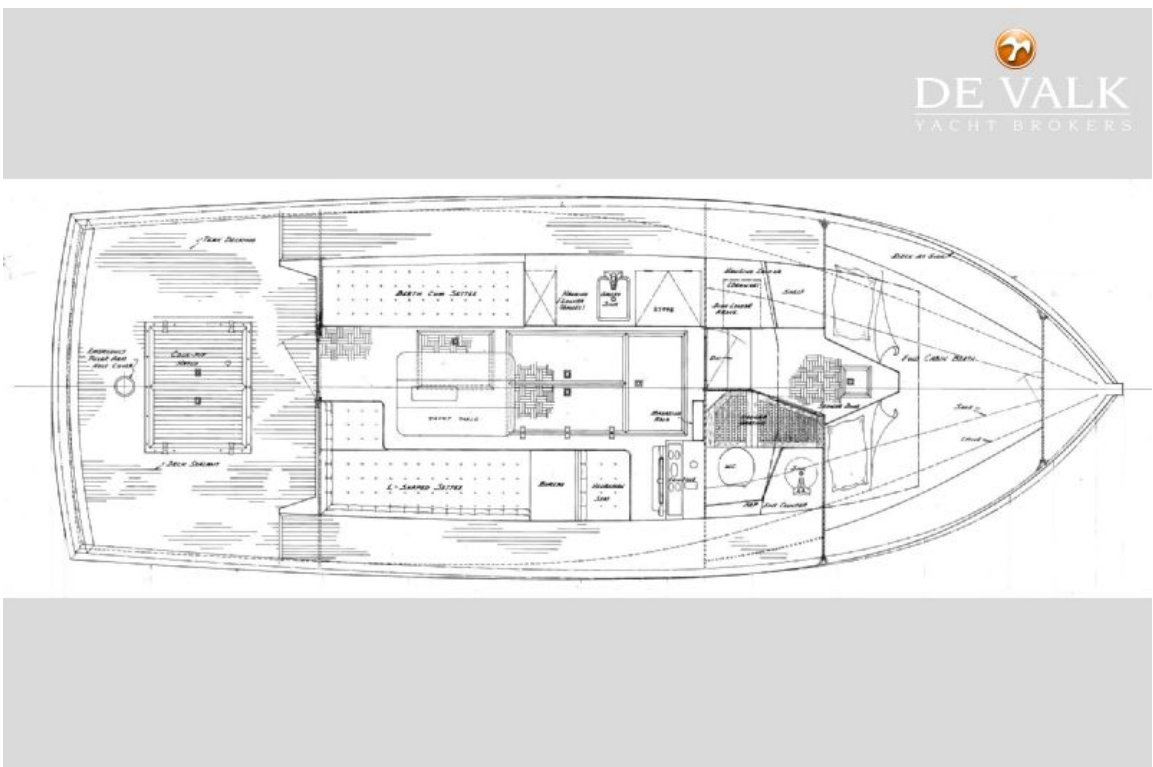
GRAND BANKS 32

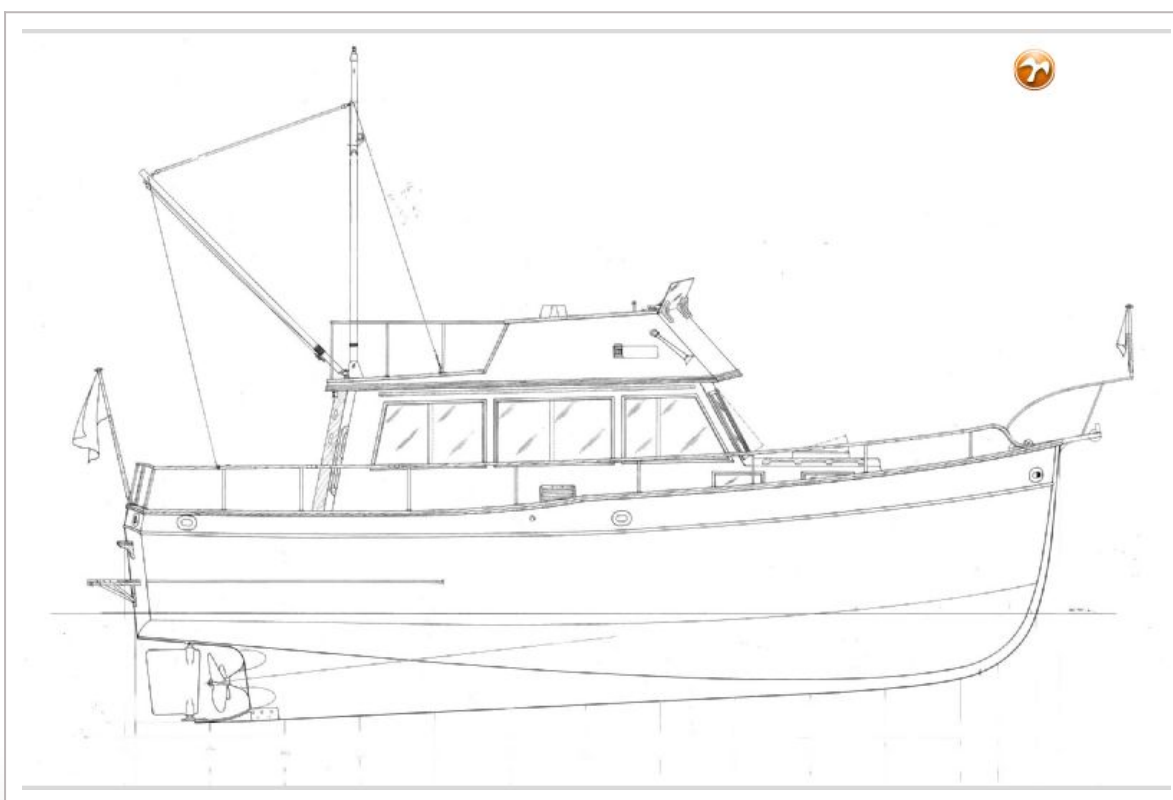
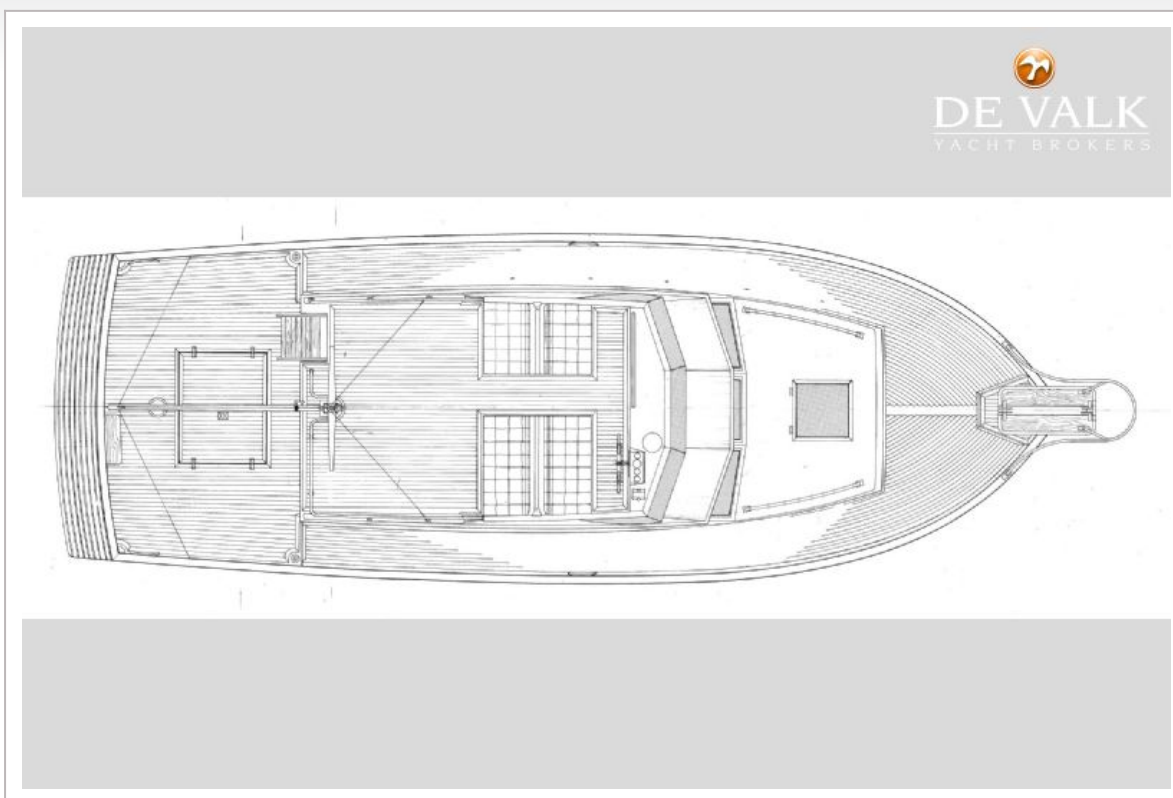




GRAND BANKS 32







GRAND BANKS 32



