



CLASSIC CRUISER '68

CLASSIC CRUISER '68

BROKER'S COMMENTS

Classic Cruiser 68, named "Bagira" is a timeless and unique motor yacht. The "Bagira" has been especially designed for the European open and inland waters. Her shallow draft of 1,53 m. and a height of 3,20 m. enables it to cruise the French water ways. This Classic Cruiser 68 represents comfort and style on the highest standard. Equipped with a 4 cabin layout each with toilet and shower, a large tender garage, a hydraulic adjustable Bimitop makes the finishing touch on this remarkable yacht.

Marc Weijenberg

SPECIFICATIONS

Dimensions	19.93 x 5.00 x 1.50 (m)	Builder	Ship Art BV
Built	2001	Cabins	4
Material	Steel	Berths	7
Engine(s)	2 x Perkins M 215 C diesel	Hp/Kw	2 x 209.00 (hp), 153.62 (kw)
Asking price	sold (VAT)	Lying	contact Sint Annaland

CONTACT

Sales office	De Valk Sint Annaland B.V.	Telephone	+31 (0)166 601 000
Address	Koelhuisweg 4 4697 RM Sint Annaland NL	E-mail	sintannaland@devalk.nl

DISCLAIMER

These particulars are given in good faith as supplied but cannot be guaranteed.



CLASSIC CRUISER '68

GENERAL

Model	CLASSIC CRUISER '68
Type	motor yacht
LOA (m)	19,93
LWL (m)	18,20
Beam (m)	5,00
Draft (m)	1,50
Air draft (m)	3,20
Headroom (m)	2,05
Year built	2001
Builder	Ship Art BV
Country	The Netherlands
Designer	Werner Yacht design
Displacement (t)	54
CE norm	NA
Hull material	steel
Hull colour	white
Hull thickness (mm)	grade A steel 10-6-5mm
Hull shape	round-bilged
Superstructure material	steel
Superstructure (mm)	4mm
Deck plate thickness (mm)	4mm
Rubbing strake	stainless steel
Deck material	steel
Deck finish	teak 15mm
Superstructure deck finish	paint Teak +
Cockpit deck finish	teak
Dorades	with stainless vents 5 x
Window frame	brass Hora chrome
Window material	double glazing
Deckhatch	1 x



CLASSIC CRUISER '68

Portholes	stainless steel
Insulation	foam
Mast can be lowered	hydraulic Brasker Oregon Pine
Fuel tank (litre)	steel 2 x 1200
Fuel tank 2 (litre)	steel 1 x 1500
Freshwater tank (litre)	stainless steel 2 x 1500
Blackwater tank (litre)	stainless steel 1 x 1000
Blackwater tank extraction	deck extraction + uw line
Greywater tank (litre)	stainless steel 50 + 150
Inside helm position	electr/hydraulic Joystick
Outside helm position	hydraulic
Emergency tiller	yes
Extra info	steel superstructure with teak-painted finish
Extra info	U-shape dinette on aft deck with hydraulic operated sun-cover.
Extra info	Hydraulic folding cover outside helm position. Stainless through hull fittings

ACCOMMODATION

Cabins	4
Berths	7
Interior	cherry
Floor	parquet Maple
Aft deck	yes
Pilot house/deck saloon	yes
Saloon	yes
Headroom saloon (m)	2,05 - 1,98
Heating	central heating Kabola B17
Air-conditioning	single cycle airco Marine Air (3 x 20.000BTU)
Aft Cabin	2 x twin cabins
Dining room	lower salon with dinette
Dinette	with adjustable table top



CLASSIC CRUISER '68

Opening door to aft deck	yes
Galley	yes
Countertop	corian
Sink	Corian 2 x
Cooker	electric Miele 4-burner induction
Extractor	Miele
Microwave/oven combi	Miele
Fridge	2 x Miele
Freezer	Miele
Hot water system	220V or central heating Rheinstrom 115ltr
Water pressure system	electrical
Dishwasher	Miele
Ice maker	Nordcap
Waste compactor	Ise 77
Owners cabin	double bed Full beam
Bed length (m)	2,05 x 1,52
Wardrobe	hanging/drawers/shelves
Bathroom	en suite I
Toilet	separate
Toilet system	electric
Wash basin	in the bathroom
Shower	en suite
Extra info	Tempure mattress with slatted base Bathroom done in Italian marble
Guest cabin 1	twin single
Bed length (m)	2,00 x 0,70
Wardrobe	hanging and shelves
Bathroom	en suite II
Toilet	en suite
Toilet system	electric
Wash basin	in the bathroom
Shower	en suite



CLASSIC CRUISER '68

Extra info	Tempure mattress
Guest cabin 2	twin single
Bed length (m)	2,00 x 0,70
Wardrobe	hanging and shelves
Bathroom	en suite III
Toilet	en suite
Toilet system	electric
Wash basin	in the bathroom
Shower	en suite
Extra info	Tempure mattress
Guest cabin 3	single bed
Bed length (m)	2,00 x 0,80
Wardrobe	hanging and shelves
Bathroom	en suite IV
Toilet	en suite
Toilet system	electric
Wash basin	in the bathroom
Shower	en suite
Extra info	Tempure mattress
Washing machine	Miele
Dryer	Miele
Extra info	Interior with niche Pear and Ebony detailing.
Extra info	Dimmable Halogen lighting. Utility room for washer/dryer, ironing board etc.

MACHINERY

No of engines	2
Make	Perkins
Type	M 215 C
HP	209
kW	153,62



CLASSIC CRUISER '68

Fuel	diesel
Year installed	2001
Maximum speed (kn)	10
Cruising speed (kn)	8
Consumption (l/hr)	16
Engine hours	955
Engine cooling system	freshwater heat exchanger
Drive	shaft
Engine controls	electrical Twindisc ES200 + Trolling valve
Gearbox	hydraulic Twindisc MG5050SC
Bowthruster	hydraulic Maxprop 320 (proportional)
Sternthruster	hydraulic Maxprop 190 (proportional)
Exhaust	watercooled Silent separator system
Thrust bearing	Aquadrive
Propeller type	fixed Teignbridge
Propeller blades	5
Propeller shaft material	stainless steel Teignbridge "Temet"
Shaft lubrication	water
Manual bilge pump	1 x Jabsco
Electric bilge pump	6 x Rheinstrom
Electrical installation	12 / 24 / 220v
Generator	silent separator Onan 17kW
Running hours generator	3474
Generator 2	silent separator Kohler 11kW (2004)
Start battery	2 x 180amp (2008)
Service battery	Gel batteries 12 x 2v 998ah (2008)
Generator battery	3 x 12v
Battery monitor	Mastervolt
Battery charger	+ 1 x 12v/10amp 2 x Mastervolt 24v/75 amp
Inverter	2 x Mastervolt 24v/2500 watt
Diode battery combiners	yes
Shorepower	with cable



CLASSIC CRUISER '68

Insulation transformer	8kW
Watermaker	(not in operation) HP UC70
Extra info	alternators: 2 x 55ah + 2 x 75ah
Extra info	Hamar waste-treatment (not in operation)
Extra info	Engine room ventilator

NAVIGATION

Electric compass	via autopilot
Depth sounder	(2012) Raymarine sonar
Log	VDO
VHF	Simrad AHS81
Autopilot	(2012) Raymarine Smartpilot
Rudder angle indicator	VDO
Radar	(2012) Raymarine HD Color
GPS	(2012) Raymarine
Plotter	+ Raymarine C125 Raymarine E-125 Hybrid Touch (2012)
AIS transponder	(2012) Raymarine Class B
Camera	On plotter, Rear view camera
Navigation lights	yes
Searchlight	with remote

EQUIPMENT

Cockpit cushions	yes
Cockpit table	yes
Bathing platform	fold-out
Boarding ladder	stainless steel
Gangway	Hydraulic
Deck shower	yes
Anchor	Pool 75kg
Anchor chain	50mtr-13mm
Windlass	hydraulic Muir VRC 3500



CLASSIC CRUISER '68

Capstan	yes
Deck wash	Rheinstrom
Dinghy	inflatable Valiant
Outboard	5hp (4stroke)
Sea railing	stainless steel
Railing side opening gates	yes
Pushpit	yes
Pulpit	yes
Life raft	yes
Wiper	Exalto 3 x
Horn	air pressure Kahlenberg
Fenders	yes
Mooring lines	yes
TV	2 x Samsung
Radio-cd player	3 x
Speakers in salon	yes
Speakers in cabin	yes
Clock - barometer	Wempe set
Extra info	Duralock safe
Extra info	Large garage-storage aft with hydraulic door



CLASSIC CRUISER '68



CLASSIC CRUISER '68



CLASSIC CRUISER '68



CLASSIC CRUISER '68



CLASSIC CRUISER '68



CLASSIC CRUISER '68



CLASSIC CRUISER '68



CLASSIC CRUISER '68



CLASSIC CRUISER '68



CLASSIC CRUISER '68



CLASSIC CRUISER '68



CLASSIC CRUISER '68



CLASSIC CRUISER '68



CLASSIC CRUISER '68



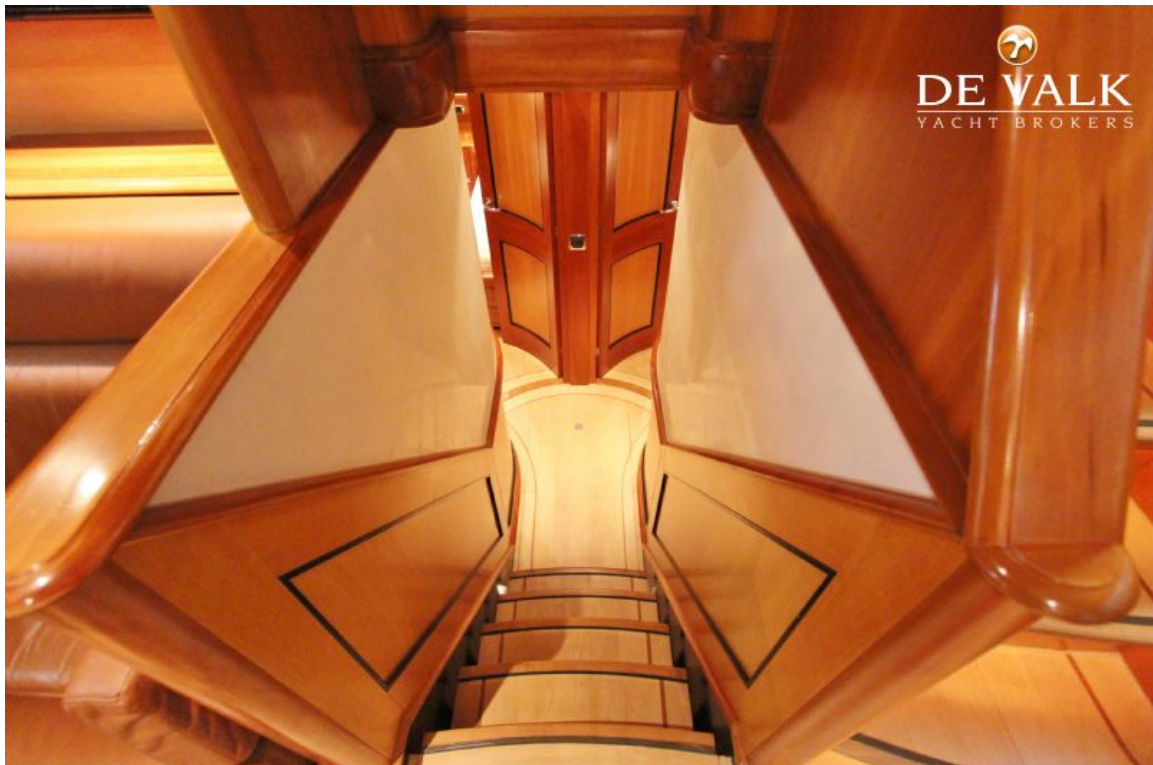
CLASSIC CRUISER '68



CLASSIC CRUISER '68



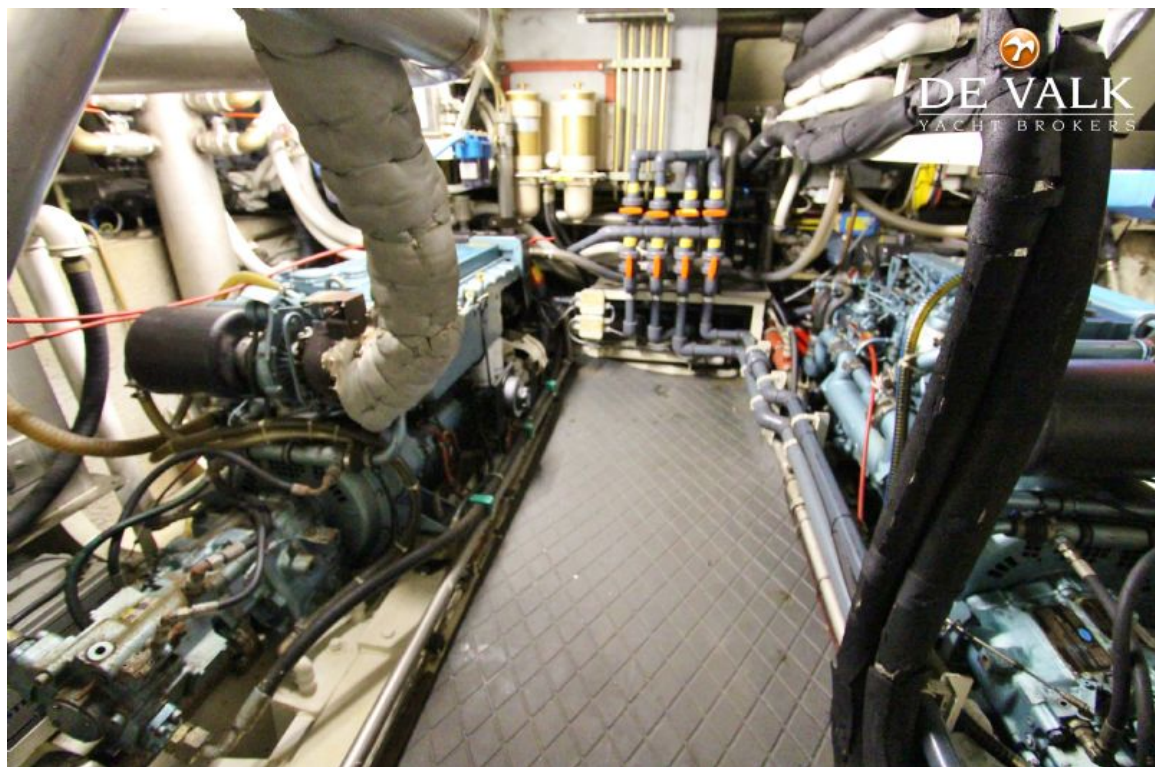
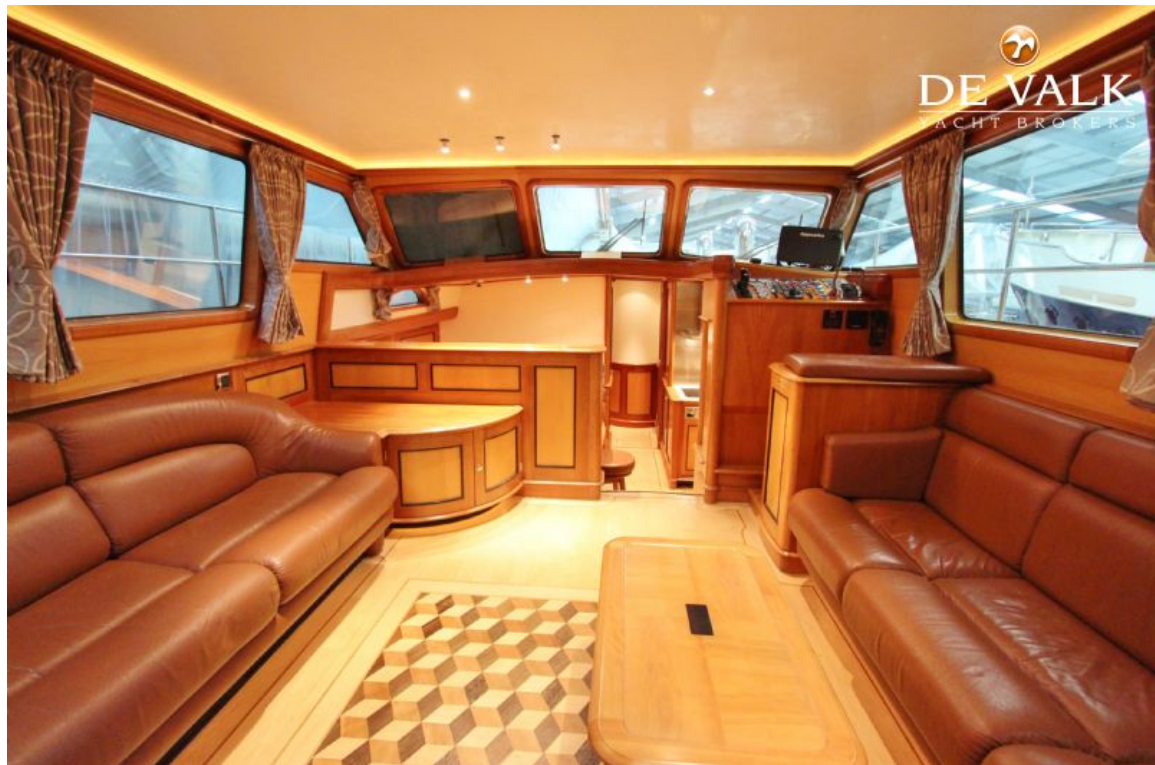
CLASSIC CRUISER '68



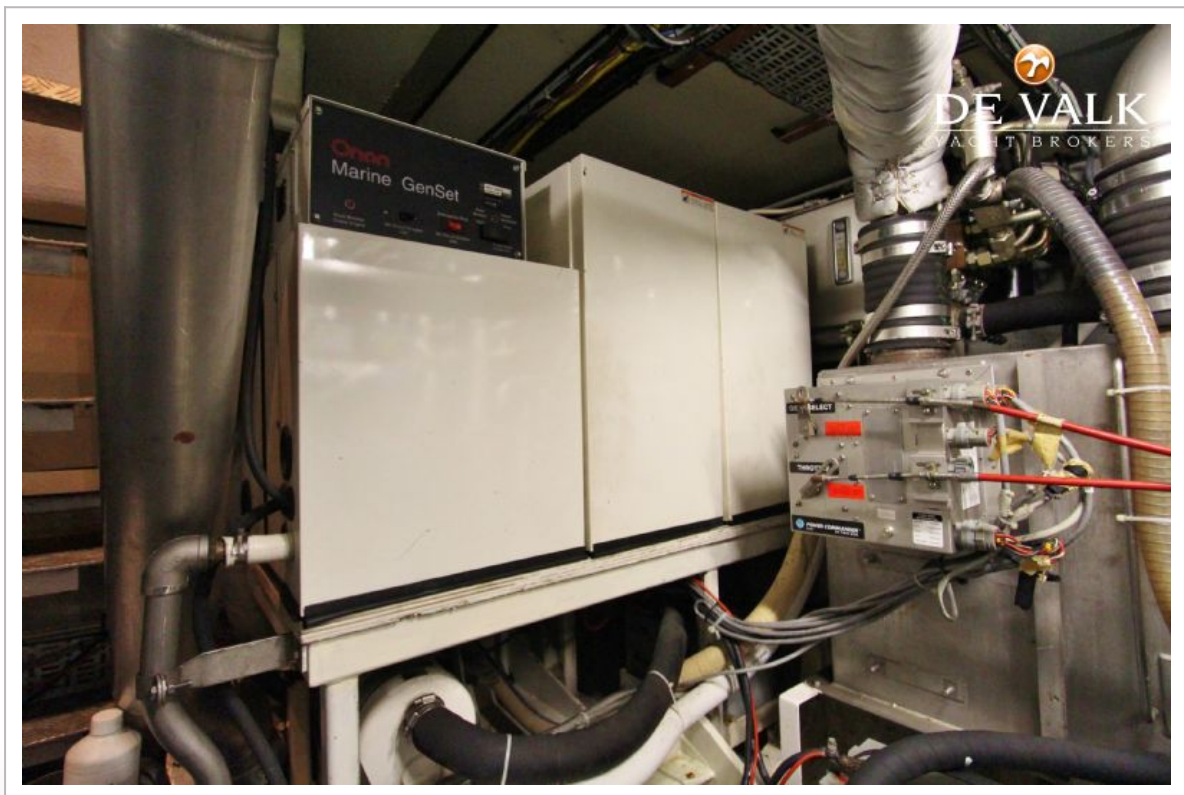
CLASSIC CRUISER '68



CLASSIC CRUISER '68



CLASSIC CRUISER '68



CLASSIC CRUISER '68



CLASSIC CRUISER '68

