



DE VALK  
YACHT BROKERS



## DEHLER 36 CWS



DE VALK  
YACHT BROKERS

## BROKER'S COMMENTS

Excellent sail performance, German built quality and with the central winch system and self tacking jib, a doddle to handle under all conditions. Ample headroom, stowage space and sleeping arrangements for captain and crew below decks. The interior, contemporary with rich mahogany trim and ample ventilation.

*Marc Weijenberg*

## SPECIFICATIONS

<b>Dimensions</b>	11.00 x 3.50 x 1.90 (m)	<b>Builder</b>	Dehler Yachtbau GmbH
<b>Built</b>	1989	<b>Cabins</b>	2
<b>Material</b>	GRP	<b>Berths</b>	6
<b>Engine(s)</b>	1 x Yanmar 3GM30 diesel	<b>Hp/Kw</b>	27.00 (hp), 19.85 (kw)
<b>Asking price</b>	sold (VAT )	<b>Lying</b>	at sales office

## CONTACT

<b>Sales office</b>	De Valk Sint Annaland B.V.	<b>Telephone</b>	+31 (0)166 601 000
<b>Address</b>	Koelhuisweg 4 4697 RM Sint Annaland NL	<b>E-mail</b>	sintannaland@devalk.nl

## DISCLAIMER

These particulars are given in good faith as supplied but cannot be guaranteed.



## GENERAL

Model	DEHLER 36 CWS
Type	sailing yacht
LOA (m)	11,00
LWL (m)	9,00
Beam (m)	3,50
Draft (m)	1,90
Air draft (m)	16,90
Headroom (m)	1,90
Year built	1989
Builder	Dehler Yachtbau GmbH
Country	Germany
Designer	Van de Stadt & Partners
Displacement (t)	5,6
Ballast (tonnes)	cast iron 2,4
Hull material	GRP
Hull colour	grey
Hull shape	roundbilged
Keel type	fin keel
Superstructure material	GRP
Rubbing strake	aluminum
Deck material	GRP
Deck finish	anti-slip paint
Cockpit deck finish	moulded in
Window frame	aluminium
Window material	polycarbonate
Portholes	aluminium
Fuel tank (litre)	polyethylene 150
Freshwater tank (litre)	polyethylene 250
Wheel steering	mechanical Whitlock
More info on hull	TBS anti-slip is re-painted



## ACCOMMODATION

Cabins	2
Berths	6
Interior	Modern mahogany trim
Floor	woodprint
Saloon	with U-shaped settee
Heating	diesel ducted hot air Eberspaecher D3L (defect)
Chart table	yes
Dinette to convert into berth	convertable with original table (original table and extra cushion is supplied seperately)
Galley	yes
Countertop	plastic
Sink	stainless steel
Cooker	calor gas 2 burner + oven
Fridge	with freezer compartment TEC 12v
Water pressure system	electrical
Owners cabin	v-bed
Wardrobe	hanging/drawers/shelves
Wash basin	in the cabin
Guest cabin 1	double bed
Wardrobe	hanging and drawers
Bathroom	shared
Toilet	shared
Toilet system	manual
Wash basin	in the bathroom
Shower	shared

## MACHINERY

No of engines	1
Make	Yanmar
Type	3GM30



HP	27,00
kW	19,85
Fuel	diesel
Year installed	1989
Maximum speed (kn)	7
Cruising speed (kn)	6
Consumption (l/hr)	3,5
Engine hours	3160
Engine cooling system	freshwater heat exchanger
Drive	shaft
Engine controls	bowden cable
Gearbox	mechanical Kanzaki / Hurth
Propeller type	fixed
Propeller blades	2
Propeller shaft material	stainless steel
Shaft lubrication	water
Manual bilge pump	yes
Electrical installation	12/220v
Start battery	1 x (2013)
Service battery	2 x 185 amp (2014)
Battery monitor	Clipper
Battery charger	2 x (2013)
Shorepower	with cable

## NAVIGATION

Compass	Plastimo Olympic 135
Depth sounder	Clipper
VHF	Dantronic
Autopilot	not functioning Autohelm 3000
Plotter	Navman Tracker 5500
Navtex	Clipper Navtex



Radio receiver

Phillips

## EQUIPMENT

Sprayhood

yes

Cockpit cover

yes

Cockpit cushions

yes

Bathing platform

fold-down

Boarding ladder

stainless steel

Anchor

CQR Plough

Anchor chain

yes

Anchor 2

Pool

Windlass

electrical S&L (defect)

Sea railing

stainless steel

Grab rail (superstructure)

yes

Pushpit

yes

Pulpit

yes

Lifebuoy

+ Lifesling

Radar reflector

yes

Fenders

yes

Mooring lines

yes

TV

Flatscreen + DVD (2013)

Clock - barometer

yes

## RIGGING

Rigging

sloop

Standing rigging

wire

Brand mast

Dehler

Material mast

aluminium

Spreaders

2 sets

Mainsail cover

Dehler Main Drop

Fully battened mainsail

approx. 12 year old Elvstrom Sails



<b>Jib</b>	approx. 12 years old Lion Sails
<b>Jib I</b>	Dijkstra Sails
<b>Genoa furler</b>	Top-Reff (2004)
<b>Genoa cover</b>	2013
<b>Booster</b>	Dijkstra Sails
<b>Self tacking jib installation</b>	for jib
<b>Reefing System</b>	slabreefing
<b>Backstay adjuster</b>	tackle
<b>Boomvang</b>	tackle
<b>Secondary sheet winch</b>	2 x Lewmar 30ST
<b>Multifunctional winches</b>	halyard/sheet winches Dehler CWS system + electric Lewmar 43EST winch
<b>Spi-pole</b>	aluminium
<b>Extra info</b>	Innovative Dehler Central Winch System with electric winch for ease and safe handling.





# DEHLER 36 CWS



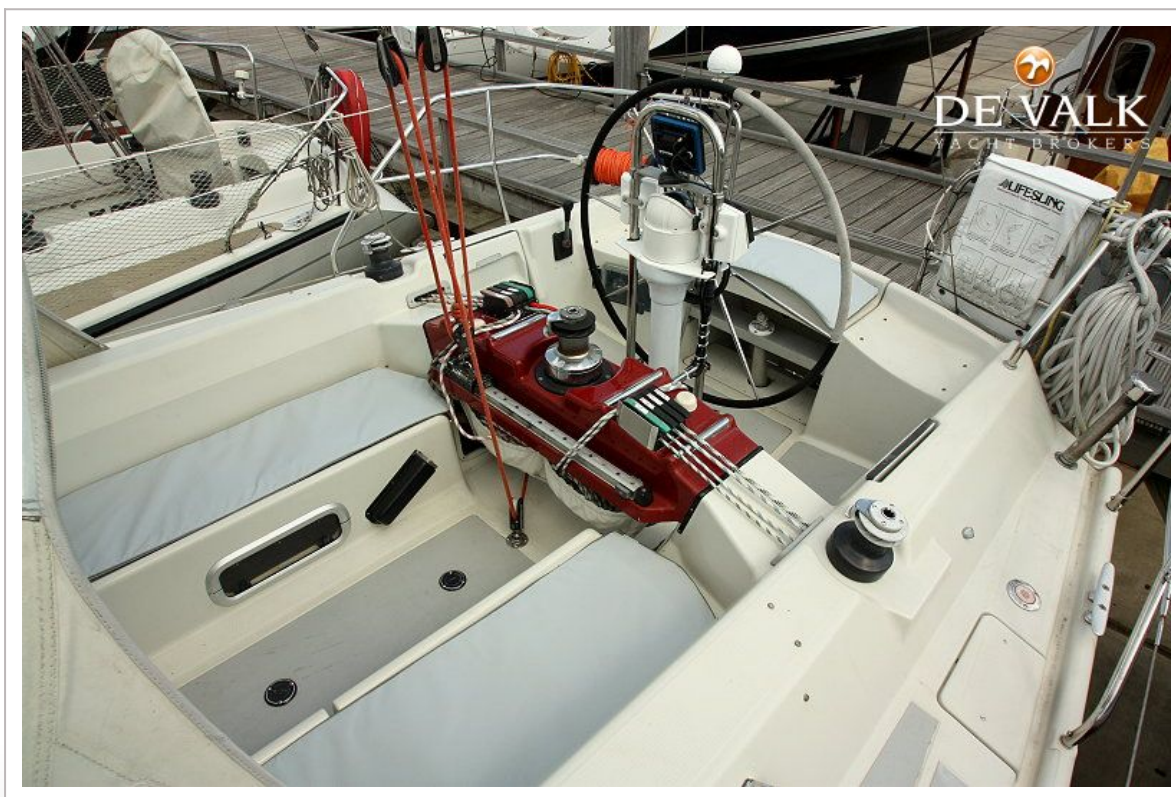


# DEHLER 36 CWS



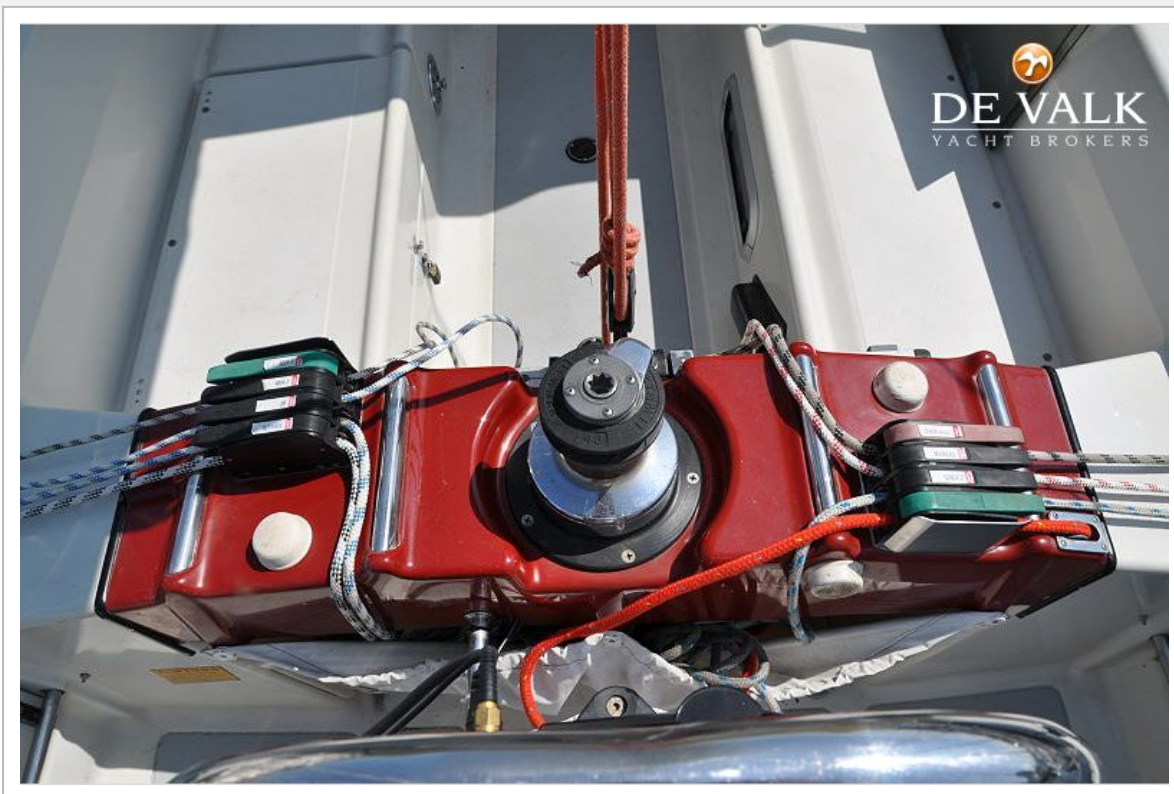


# DEHLER 36 CWS





# DEHLER 36 CWS



## DEHLER 36 CWS





# DEHLER 36 CWS



# DEHLER 36 CWS





# DEHLER 36 CWS

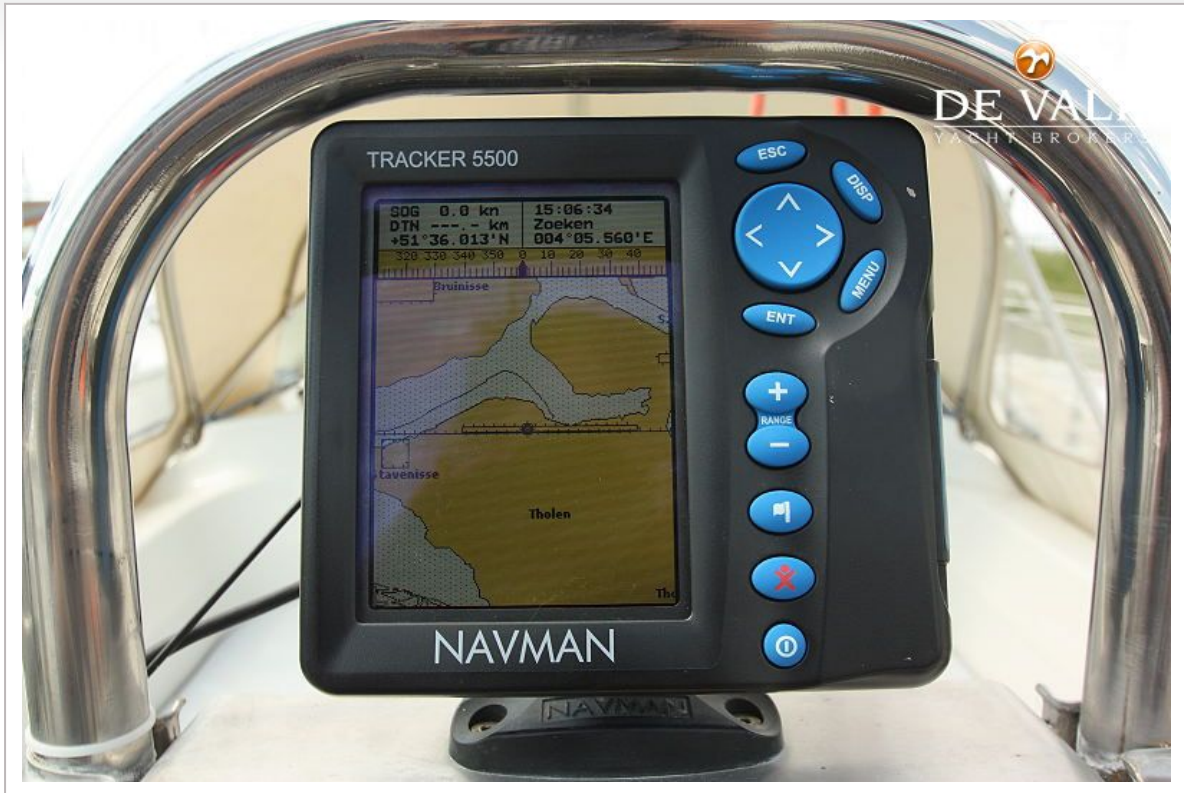




# DEHLER 36 CWS

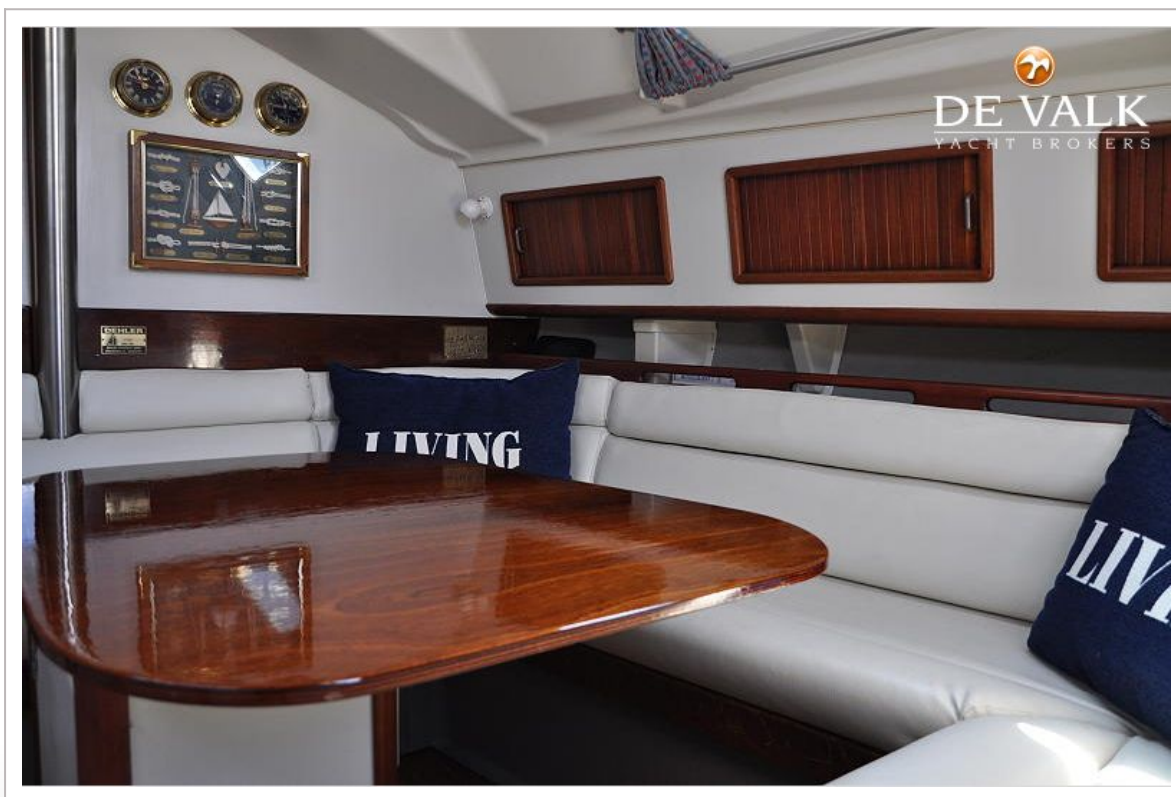


# DEHLER 36 CWS





# DEHLER 36 CWS

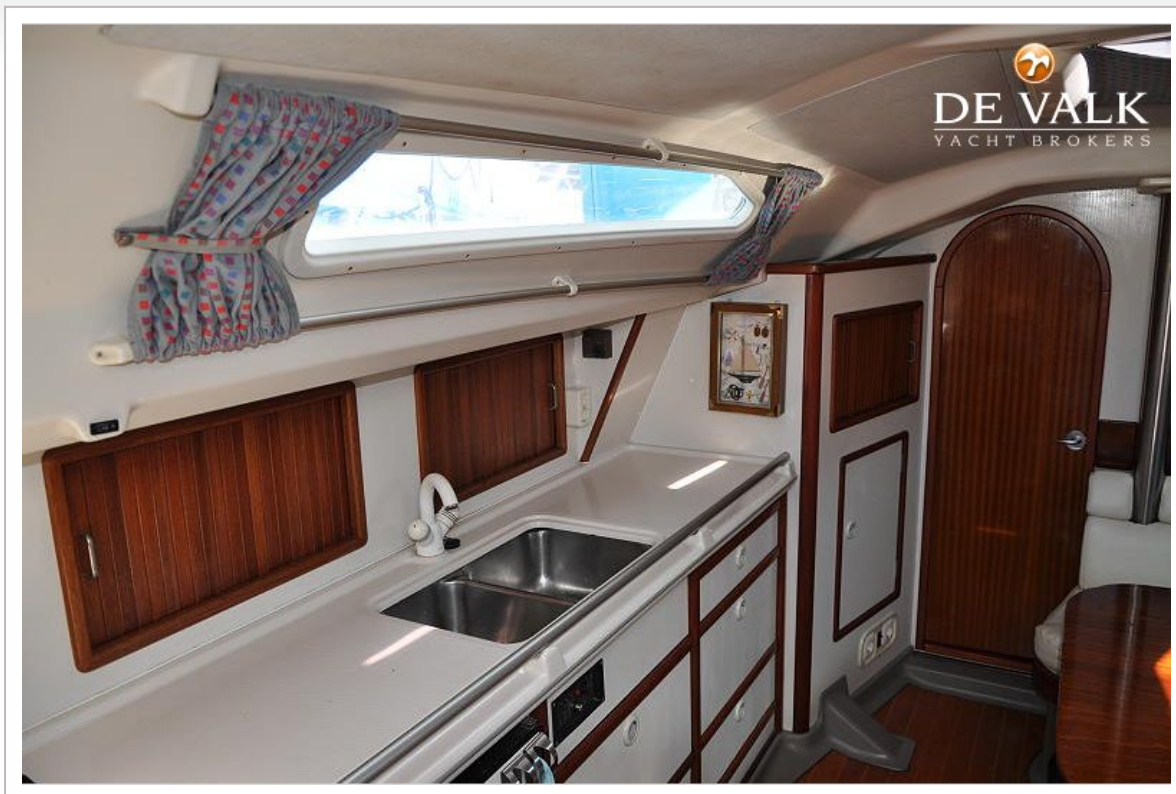


## DEHLER 36 CWS





## DEHLER 36 CWS

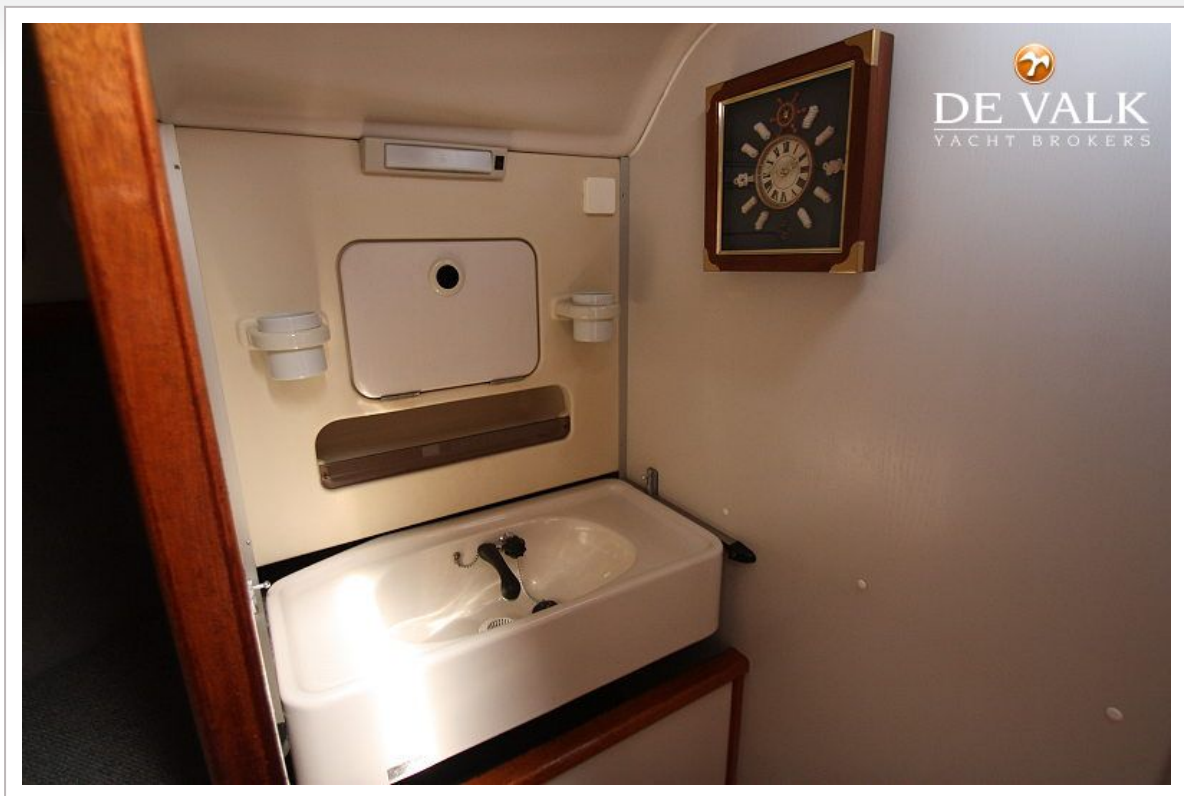


## DEHLER 36 CWS





## DEHLER 36 CWS





# DEHLER 36 CWS



# DEHLER 36 CWS

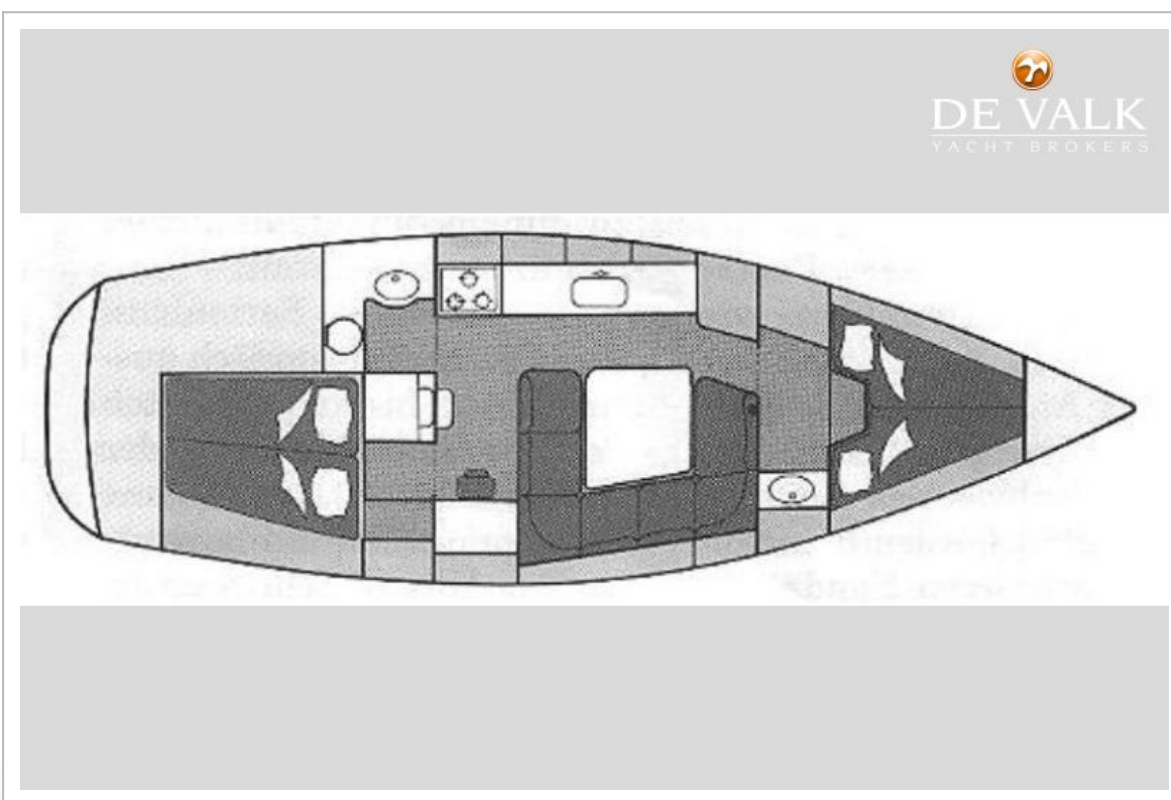




# DEHLER 36 CWS



# DEHLER 36 CWS



# DEHLER 36 CWS

