



SKILSO 975 SPORT

SKILSO 975 SPORT

BROKER'S COMMENTS

Skilso, a brand filled with Norwegian class and build quality. Appreciated by many and therefore known for their rugged off- and inshore sport cruisers. Surprisingly ample sized accommodations below and in the huge cockpit. Ideal for summer vacations, weekend outings and fast daytrips. Aft a separate cabin with double bed and forward the salon can be converted into a huge double cabin with ensuite facilities. The large open cockpit is excellent for entertainment while under way and in marina leisure (or at anchor). Fully covered it also is an extension of the forward salon area. Strong and reliable Volvo diesel which can push her along at 21 knots or economically cruise at 6 knots at approx. 5 ltr/hr.

Marc Weijenberg

SPECIFICATIONS

Dimensions	9.90 x 3.20 x 0.90 (m)	Builder	Skilso Yachts
Built	1994	Cabins	2
Material	GRP	Berths	5
Engine(s)	1 x Volvo Penta KAMD 42 diesel	Hp/Kw	225.00 (hp), 165.38 (kw)
Asking price	sold (VAT)	Lying	at sales office

CONTACT

Sales office	De Valk Sint Annaland B.V.	Telephone	+31 (0)166 601 000
Address	Koelhuisweg 4 4697 RM Sint Annaland NL	E-mail	sintannaland@devalk.nl

DISCLAIMER

These particulars are given in good faith as supplied but cannot be guaranteed.



GENERAL

Model	SKILSO 975 SPORT
Type	motor yacht
LOA (m)	9,90
Beam (m)	3,20
Draft (m)	0,90
Air draft (m)	2,85
Headroom (m)	1,89
Year built	1994
Builder	Skilso Yachts
Country	Norway
Displacement (t)	3,5
Hull material	GRP
Hull colour	white
Hull shape	deep-V
Superstructure material	GRP
Rubbing strake	rubber
Deck material	GRP
Deck finish	anti-slip moulded in
Cockpit deck finish	teak
Window frame	stainless steel
Portholes	stainless steel
Radar arch	yes
Fuel tank (litre)	steel 200 + 250
Level indicator (fuel tank)	disfunctioning
Level indicator (daytank)	disfunctioning
Freshwater tank (litre)	aluminium 140
Level indicator (freshwater)	yes
Blackwater tank (litre)	GRP 140
Blackwater tank extraction	pump
Wheel steering	hydraulic



ACCOMMODATION

Cabins	2
Berths	5
Interior	teak
Floor	carpet
Open cockpit	yes
Saloon	forward combined double bed
Headroom saloon (m)	1,89
Heating	diesel ducted hot air Volvo Ardic
Aft Cabin	yes
Dinette to convert into berth	2,10 x 2,15 m
Galley	yes
Sink	stainless steel
Cooker	Dometic 2 burner (2014)
Fridge	with freezer compartment 2 x (Isotherm + Coolmatic)
Hot water system	220V + engine
Water pressure system	electrical
Owners cabin	double bed Aft / achter / hinten
Bathroom	shared
Toilet	shared
Toilet system	manual
Wash basin	in the bathroom
Guest cabin 1	single bed Forward / voorin / vorne
Bed length (m)	2,05 x 1,05

MACHINERY

No of engines	1
Make	Volvo Penta
Type	KAMD 42
HP	225,00
kW	165,38



SKILSO 975 SPORT

Fuel	diesel
Year installed	1994
Maximum speed (kn)	21
Cruising speed (kn)	6
Consumption (l/hr)	5
Engine hours	1182
Engine cooling system	freshwater heat exchanger
Drive	shaft
Engine controls	bowden cable
Gearbox	hydraulic Volvo Penta HS1
Bowthruster	electrical Vetus
Exhaust	watercooled
Propeller type	fixed
Propeller blades	4
Shaft lubrication	water
Manual bilge pump	yes
Electric bilge pump	yes
Electrical installation	12/220v
Start battery	1 x 100 amp (2013)
Service battery	1 x 100 amp (2013)
Battery charger	Victron automatic (2013)
Shorepower	with cable
Trimtabs	yes
Extra info	engine has had full service

NAVIGATION

Compass	needs repair Suunto
Depth sounder	Raymarine CX400
Log	log+echosounder Authelm ST50 Bidata
VHF	Shipmare RS8300 (needs small repair)
Plotter	Simrad CP32



EQUIPMENT

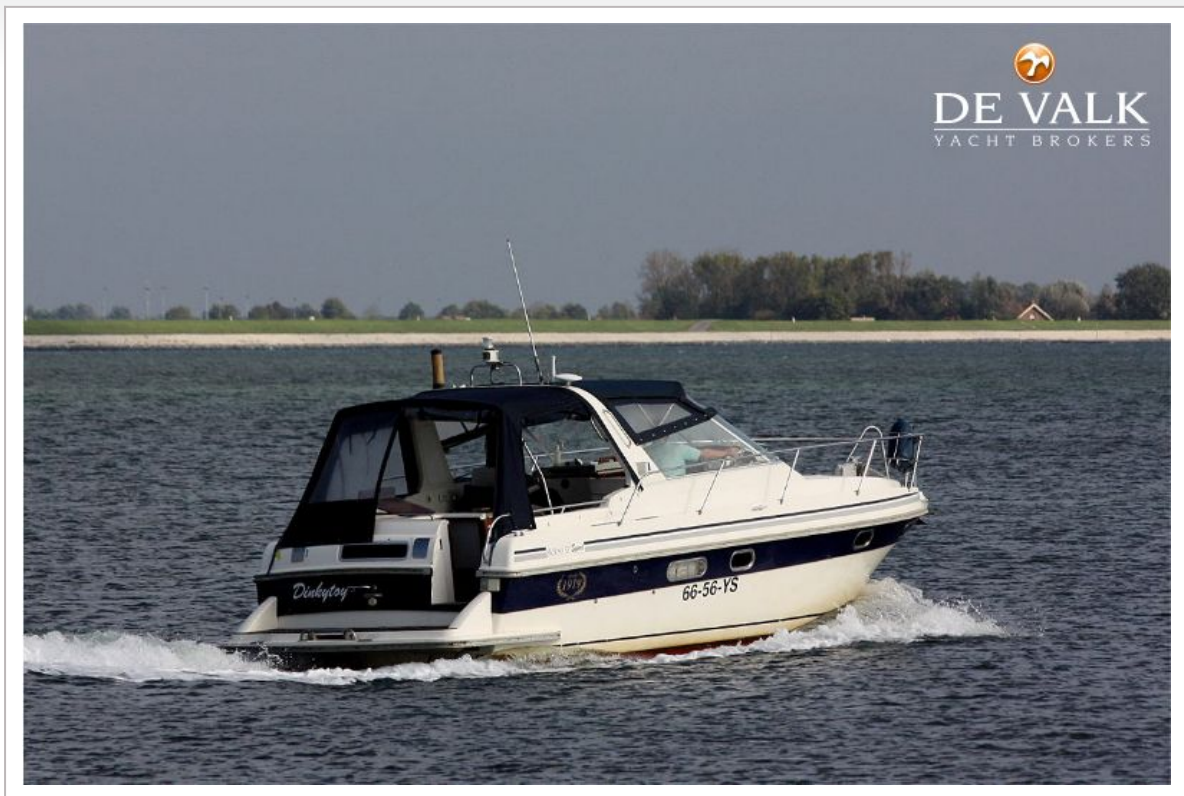
Sprayhood	yes
Cockpit cover	(2014)
Cockpit cushions	yes
Cockpit table	yes
Bathing platform	yes
Boarding ladder	stainless steel
Transom door	yes
Anchor	yes
Anchor chain	yes
Windlass	electrical Lofrans
Sea railing	stainless steel
Pulpit	yes
Lifejackets	yes
Wiper	(new motors) 2 x
Horn	electric
Fenders	yes
Mooring lines	yes
Spare parts	yes
Clock - barometer	yes



SKILSO 975 SPORT



SKILSO 975 SPORT



SKILSO 975 SPORT



SKILSO 975 SPORT



SKILSO 975 SPORT



SKILSO 975 SPORT



SKILSO 975 SPORT



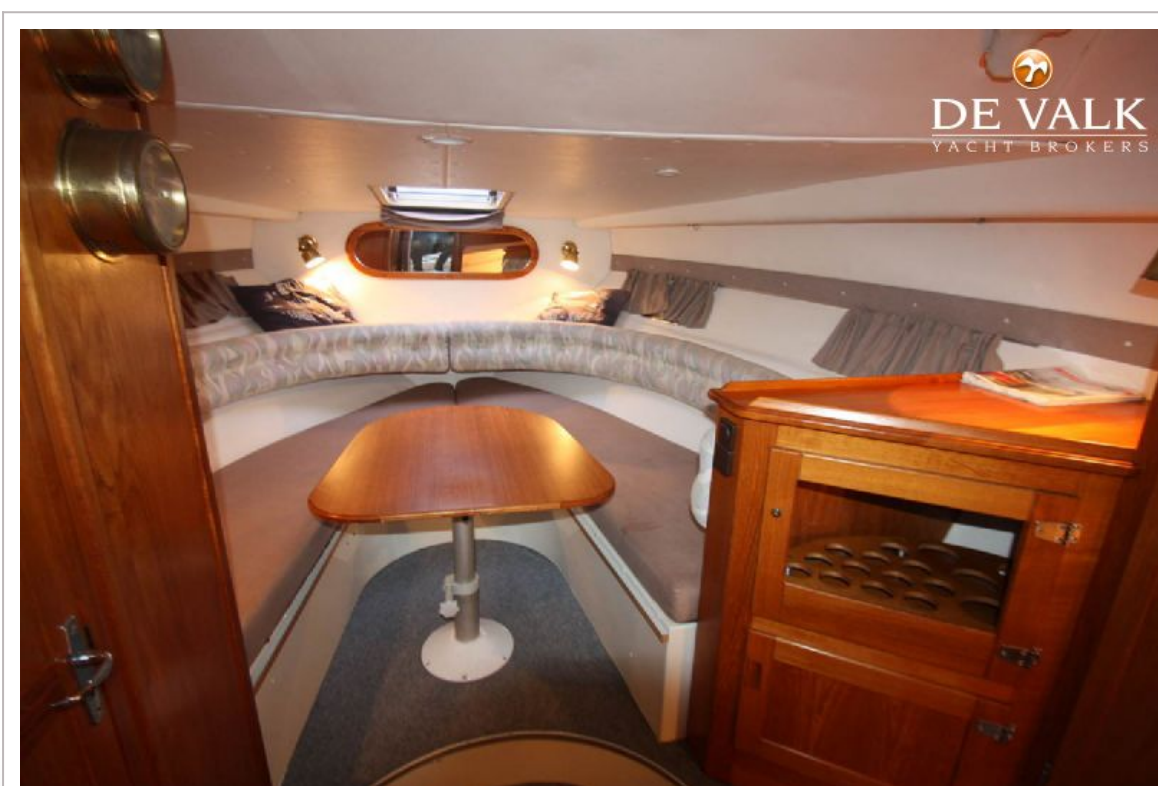
SKILSO 975 SPORT



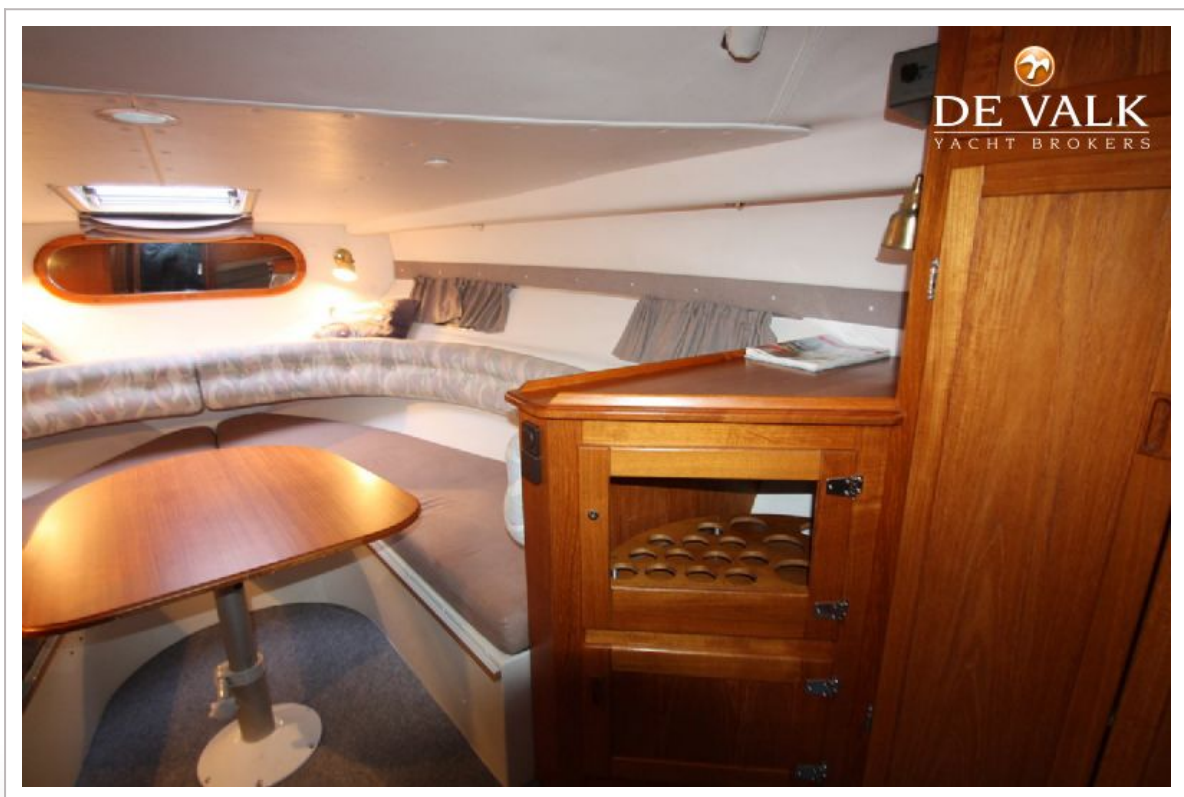
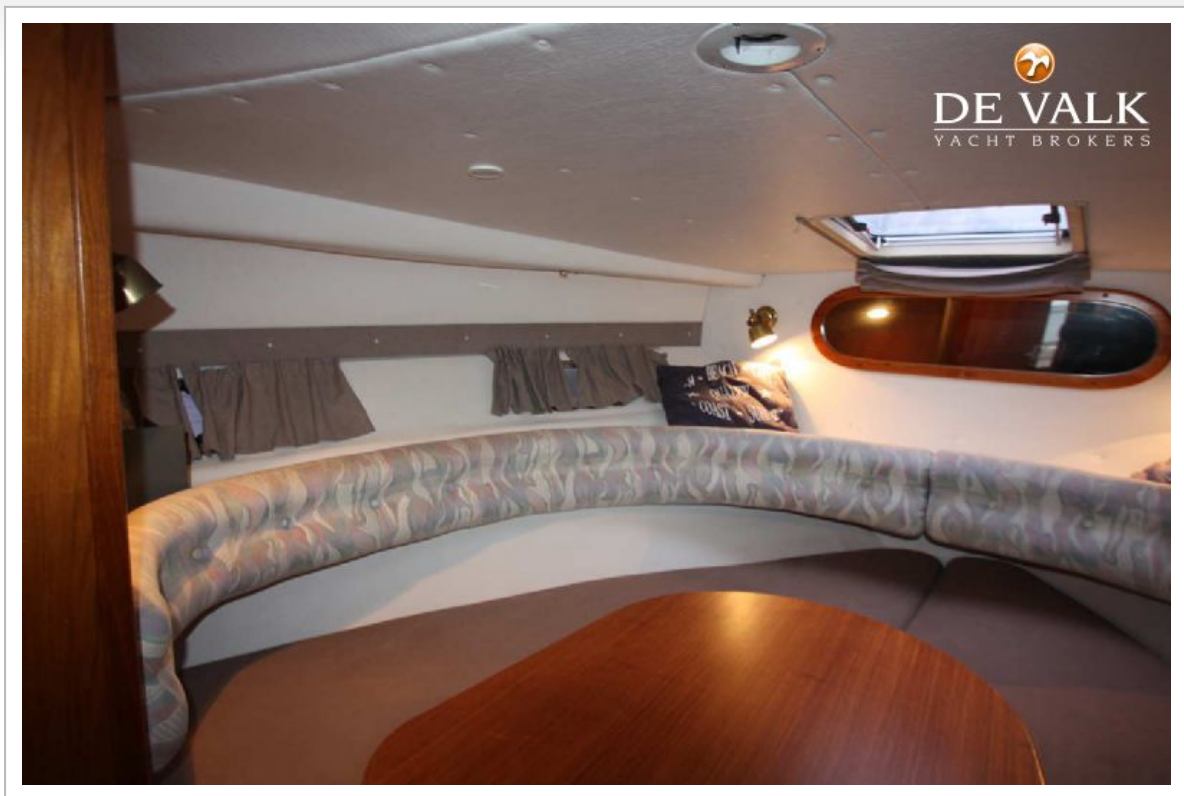
SKILSO 975 SPORT



SKILSO 975 SPORT



SKILSO 975 SPORT



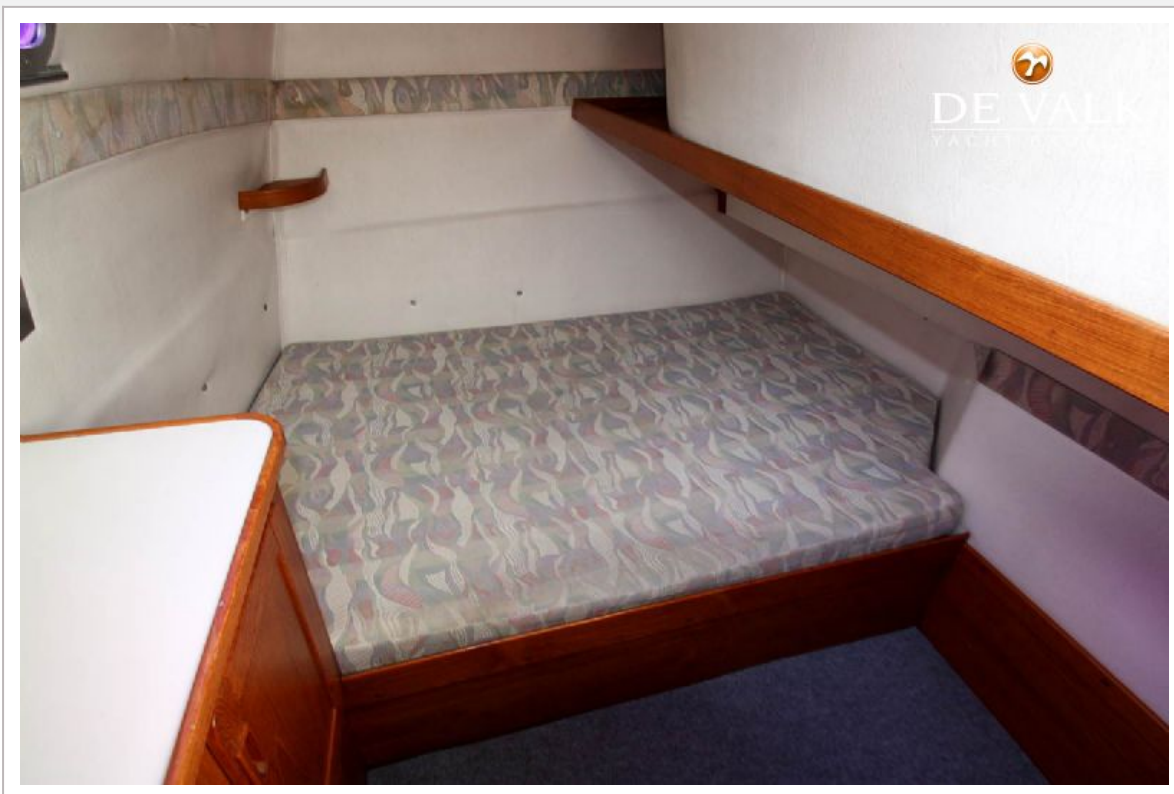
SKILSO 975 SPORT



SKILSO 975 SPORT



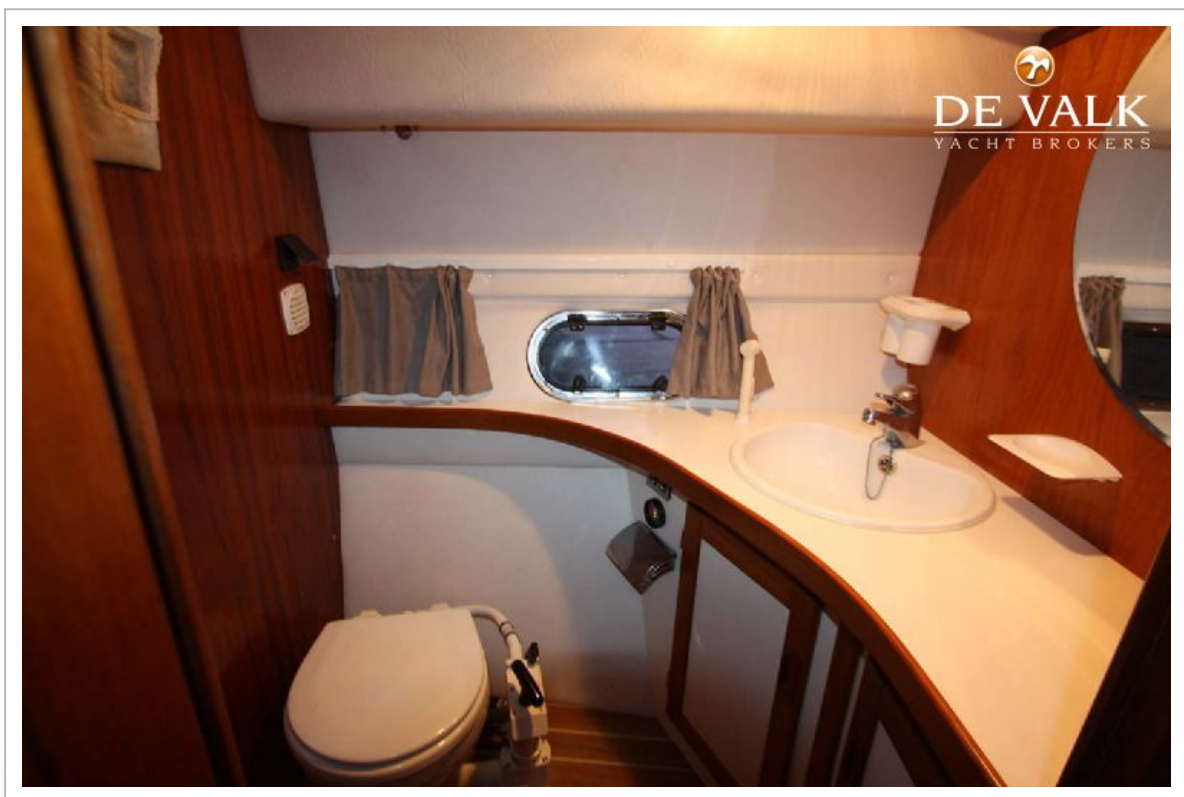
SKILSO 975 SPORT



SKILSO 975 SPORT



SKILSO 975 SPORT



SKILSO 975 SPORT

