



GRAND BANKS 32


DE VALK
YACHT BROKERS

BROKER'S COMMENTS

Well maintained Grand Banks 32, a great brand that needs no introduction. This compact yacht is suitable for coastal waters as also inland waterways. She has a cosy saloon for long stays on board.

Stef Struijk

SPECIFICATIONS

Dimensions	9.73 x 3.60 x 1.14 (m)	Builder	American Marine LTD Singapore
Built	1982	Cabins	1
Material	GRP	Berths	6
Engine(s)	1 x Ford Lehman diesel	Hp/Kw	120.00 (hp), 88.20 (kw)
Asking price	sold (VAT)	Lying	elsewhere / Not at sales office

CONTACT

Sales office	De Valk Sint Annaland B.V.	Telephone	+31 (0)166 601 000
Address	Koelhuisweg 4 4697 RM Sint Annaland NL	E-mail	sintannaland@devalk.nl

DISCLAIMER

These particulars are given in good faith as supplied but cannot be guaranteed.



GENERAL

Model	GRAND BANKS 32
Type	motor yacht
LOA (m)	9,73
LWL (m)	9,37
Beam (m)	3,60
Draft (m)	1,14
Air draft (m)	3,50
Headroom (m)	1,92
Year built	1982
Builder	American Marine LTD Singapore
Country	Taiwan
Designer	John Bennet
Displacement (t)	8
Hull material	GRP
Hull colour	white
Superstructure material	GRP
Rubbing strake	stainless steel
Deck material	GRP
Deck finish	teak
Superstructure deck finish	teak
Cockpit deck finish	teak
Antifouling (year)	2012
Window frame	wood
Window material	glass
Deckhatch	1
Flybridge	yes
Flybridge cockpit cover	2012
Flybridge suncover	yes
Mast can be lowered	manual
Fuel tank (litre)	steel 2 x 500



Level indicator (fuel tank)	yes
Freshwater tank (litre)	steel 600+
Level indicator (freshwater)	yes
Wheel steering	mechanical
Inside helm position	yes
Flybridge helm position	mechanical
Emergency tiller	yes

ACCOMMODATION

Cabins	1
Berths	6
Interior	teak
Floor	parquet
Open cockpit	yes
Headroom saloon (m)	1,92
Heating	diesel ducted hot air Webasto
Air-conditioning	reverse cycle airco 2x
Dinette to convert into berth	And bunkbed op port side
Galley	yes
Countertop	plastic
Sink	stainless steel
Cooker	electric 2-burner
Oven	Combi
Extractor	yes
Microwave	Combi
Fridge	with freezer compartment
Hot water system	220V + engine
Water pressure system	electrical
Owners cabin	v-bed With filling piece
Bed length (m)	1,92
Wardrobe	hanging



Toilet	
Toilet system	manual
Wash basin	at the toilet
Shower	

MACHINERY

No of engines	1
Make	Ford Lehman
HP	120,00
kW	88,20
Fuel	diesel
Year installed	1982
Cruising speed (kn)	6,8
Consumption (l/hr)	6
Engine hours	1050
Engine cooling system	freshwater heat exchanger
Drive	shaft
Engine controls	bowden cable
Gearbox	mechanical
Bowthruster	electric Duco, 2002
Propeller type	fixed (+ spare, 3 blades)
Propeller blades	4
Propeller shaft material	stainless steel
Shaft lubrication	water
Manual bilge pump	yes
Electric bilge pump	yes
Electrical installation	12/220v
Generator	Onan
Batteries	Total of 5x gel
Start battery	yes
Service battery	yes



Generator battery	yes
Bowthruster battery	yes
Inverter	Mastervolt
Shorepower	with cable
Extra info	yes

NAVIGATION

Compass	2 x Danfort
Depth sounder	2 x Raymarine ST60
Log	2x Raymarine ST60
VHF	2x Shipmate
Plotter	2 x Raytheon RL70 (black and white)
Searchlight	yes

EQUIPMENT

Cockpit cover	Canvas roof over cockpit
Bimini	On Flybridge
Cockpit table	yes
Cockpit chairs	yes
Bathing platform	yes
Boarding ladder	stainless steel
Deck shower	Hot + cold
Anchor	CQR Plough
Anchor chain	Approx. 80mtr.
Anchor 2	Spare with line
Windlass	electrical
Capstan	yes
Sea railing	wood
Wiper	yes
Clearview window	yes
Horn	electric



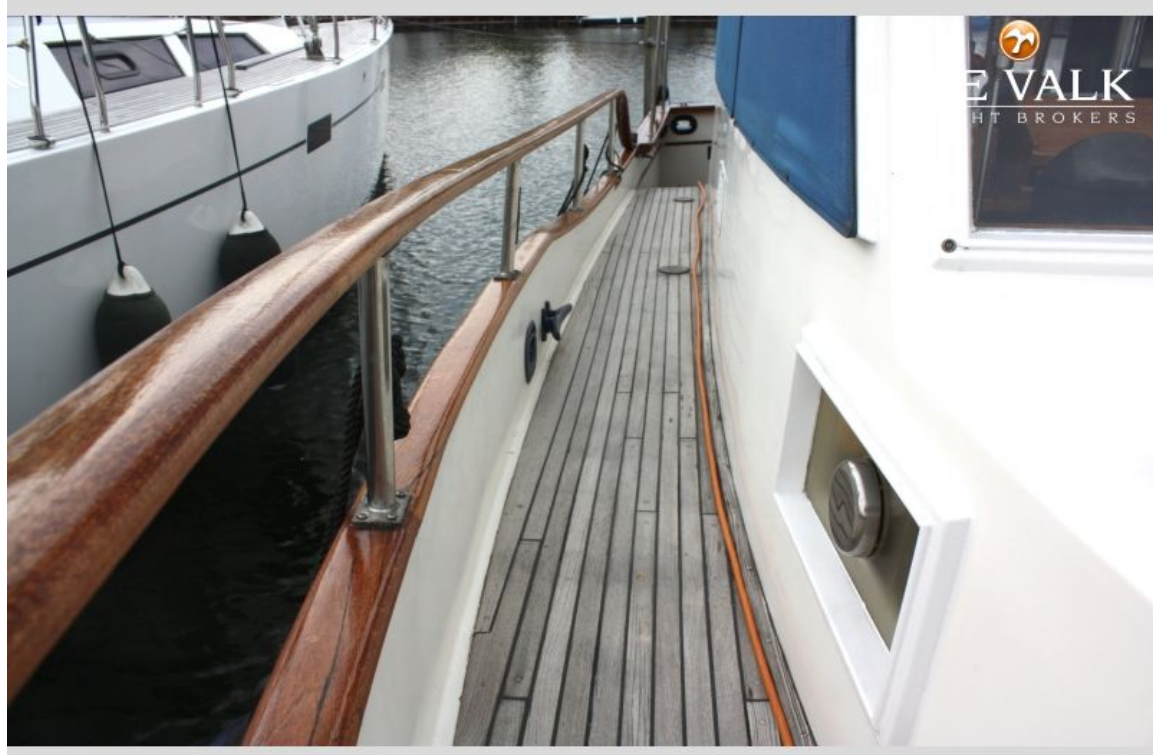
Radar reflector	yes
Fenders	yes
Mooring lines	yes
TV	yes
Radio-cd player	yes
Clock - barometer	yes
Fire extinguisher	3
Latest extinguisher survey	2014
Extra info	Covers for windows

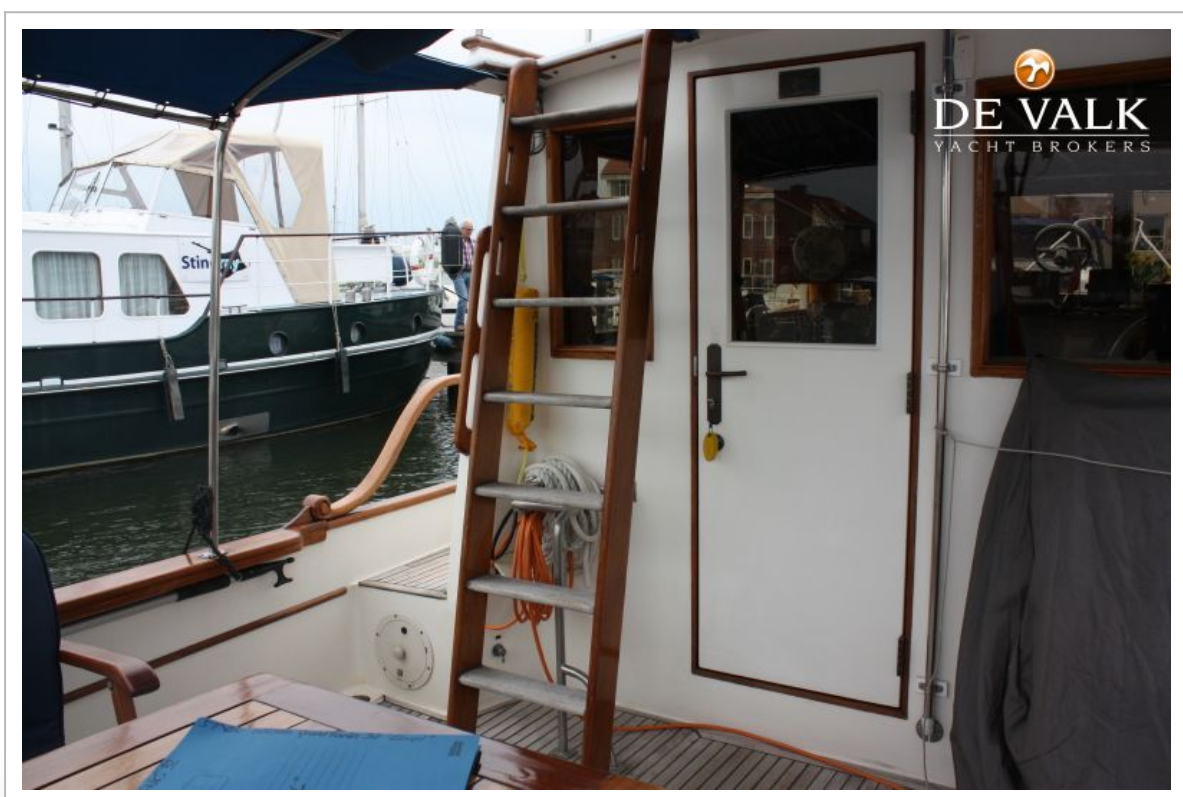




GRAND BANKS 32





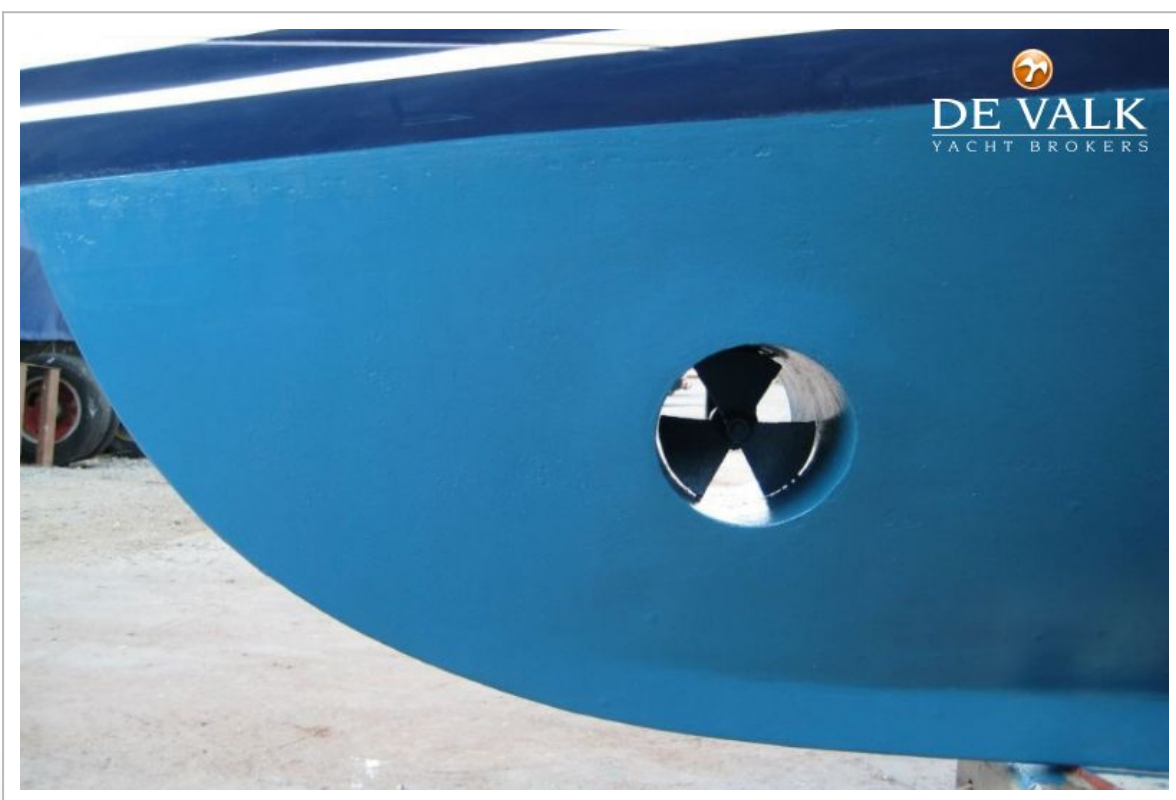




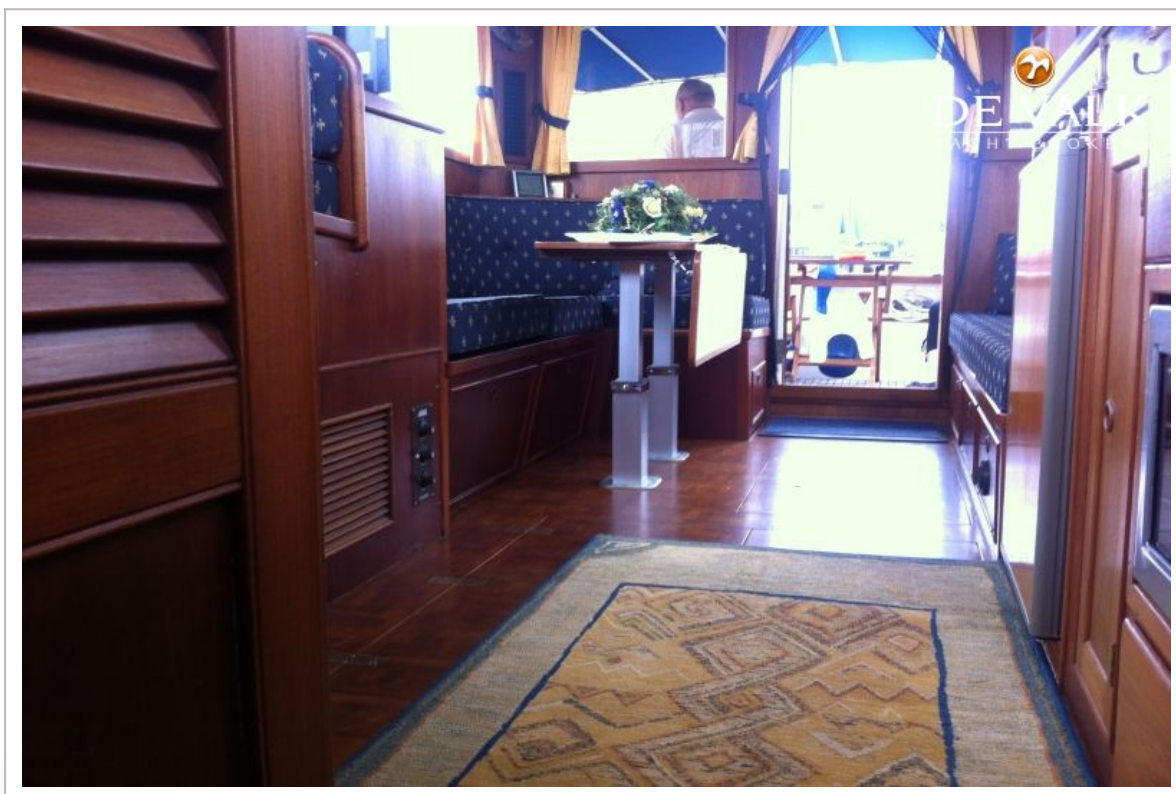
















GRAND BANKS 32



