



JONMERI 40



BROKER'S COMMENTS

The Jonmeri 40 is designed by Jorna Nyman, built by Maestro Boats. Characteristic of yachts built in Finland are; quality, safety, craftsmanship, beautiful lines and excellent sailing. The special deck with two cockpits offers safe sailing and cruising fun. Her beautifully interior gives space and comfort under sail and in the harbor, also a good yacht for longer trips. Helped by a 50 HP Volvo Penta engine, easy to maneuver. In the hands of her second owner since 2003 she has been kept in superb condition. Definitely worth a visit at De Valk Yachtbrokers in Sint Annaland, The Netherlands.

Jochem Heijermans

SPECIFICATIONS

Dimensions	12.10 x 3.85 x 2.10 (m)	Builder	Maestro Boats
Built	1995	Cabins	2
Material	GRP	Berths	6
Engine(s)	1 x Volvo Penta MD 22 diesel	Hp/Kw	50.00 (hp), 36.75 (kw)
Asking price	sold (VAT)	Lying	at sales office

CONTACT

Sales office	De Valk Sint Annaland B.V.	Telephone	+31 (0)166 601 000
Address	Koelhuisweg 4 4697 RM Sint Annaland NL	E-mail	sintannaland@devalk.nl

DISCLAIMER

These particulars are given in good faith as supplied but cannot be guaranteed.



GENERAL

Model	JONMERI 40
Type	sailing yacht
LOA (m)	12,10
LWL (m)	10,00
Beam (m)	3,85
Draft (m)	2,10
Air draft (m)	18,50
Headroom (m)	1,90
Year built	1995
Builder	Maestro Boats
Country	Finland
Designer	Jorna Nyman
Displacement (t)	9,7
Ballast (tonnes)	lead 2,8
CE norm	NA
Hull material	GRP
Hull colour	off-white
Hull shape	round-bilged
Keel type	fin keel with bulb
Superstructure material	GRP
Deck material	GRP
Deck finish	teak
Superstructure deck finish	teak
Cockpit deck finish	teak
Antifouling (year)	2019 sanded
Dorades	3 x
Window frame	aluminium
Window material	tempered glass
Deckhatch	2 x Lewmar
Portholes	aluminium 5 x



Radar arch	non collapsible
Fuel tank (litre)	stainless steel 180
Level indicator (fuel tank)	VDO
Freshwater tank (litre)	stainless steel 2 x total 230
Level indicator (freshwater)	not working on starboard VDO
Blackwater tank (litre)	stainless steel
Blackwater tank extraction	deck extraction + pump
Wheel steering	rack & pinion Whitlock
Emergency tiller	yes
Extra info	flyscreens for cabin both cabin entrances

ACCOMMODATION

Cabins	2
Berths	6
Interior	teak
Floor	teak and holly
Saloon	Upholstery 2013
Headroom saloon (m)	1,9
Heating	diesel ducted hot air Eberspächer D5L
Heating 2	electric 220V
Navigation center	yes
Chart table	yes
Aft Cabin	yes
Galley	yes
Countertop	corian
Sink	stainless steel 2 x
Cooker	calor gas Force 10 (2014)
Oven	Force 10
Fridge	Isotherm stainless steel
Hot water system	220V + engine
Water pressure system	



Kettle	yes
Crockery	yes
Owners cabin	double bed
Bed length (m)	2,15 x 1,65
Wardrobe	hanging and shelves
Bathroom	shared
Toilet	shared
Toilet system	manual
Wash basin	in the bathroom
Shower	shared
Guest cabin 1	double bed + single bed
Bed length (m)	1x 1,15 x 2,05 1x 1,15 x 1,85
Wardrobe	hanging
Bathroom	shared
Toilet	shared
Toilet system	manual
Wash basin	in the bathroom
Shower	shared
Extra info	Heating 3: Heat exchanger on the engine.
Extra info	mast in saloon covered with elkskin

MACHINERY

No of engines	1
Make	Volvo Penta
Type	MD 22
HP	50
kW	36,75
Fuel	diesel
Year installed	1995
Maximum speed (kn)	7,5
Cruising speed (kn)	6,5



Consumption (l/hr)	2
Engine cooling system	freshwater heat exchanger
Drive	sail-drive
Saildrive seal	2014
Engine controls	bowden cable
Gearbox	mechanical
Exhaust	watercooled
Propeller type	folding Volvo Penta
Propeller blades	3
Manual bilge pump	yes
Electric bilge pump	yes
Electrical installation	12V / 220V
Batteries	3 x
Start battery	1 x 85 Ah
Service battery	2 x 105 Ah (2019)
Battery monitor	yes
Battery charger	Mastervolt 12/25-2 (25 Ah)
Inverter	Victron 12V / 350W
Shorepower	with cable
Insulation transformer	Mastervolt Mass GI 3.5 (2011)
Extra info	engine hour meter defective

NAVIGATION

Compass	Suunto D-165
Depth sounder	Raymarine ST70 (2013)
Log	Raymarine ST70 (2012)
Windset	Raymarine ST70 (2013)
Repeater	2 x Raymarine i70 (2012)
VHF	Garmin VHF300 DSC (2012)
Autopilot	Raymarine SPX30 / P70 (2012)
Radar	Raymarine RD 418 HD dome (2011)



GPS	Raymarine Raystar 130 (2012)
Radar/GPS/plotter	at external helm 2 x Raymarine C120W (2012)
Navtex	Furuno type NX-300 (2010)
AIS transponder	Raymarine AIS650 klasse B (2013)
Personal MOB transmitter	Raymarine
Extra info	Raymarine Seataalk NG/NMEA 2000 network

EQUIPMENT

Sprayhood	2 x 2018
Cockpit cover	2018
Sun awning	yes
Cockpit cushions	yes
Cockpit table	yes
Boarding ladder	stainless steel
Bow ladder	yes
Deck shower	hot & cold
Anchor	CQR Plough
Anchor chain	40m
Windlass	electrical
Capstan	yes
Outboard support	yes
Sea railing	wire
Grab rail (superstructure)	stainless steel
Railing side opening gates	2
Life raft (pers)	container 6
Last life raft survey	2018
Lifebuoy	yes
Safety lines on deck	yes
Radar reflector	Tri-Lens 12-Inch
Fenders	yes
Mooring lines	yes



Radio-cd player	Blaupunkt Hamburg MP57
Cockpit speakers	2 x
Speakers in salon	2 x
Extra info	Weather Station
Extra info	covers for all hatches
Extra info	flyscreens

RIGGING

Rigging	sloop
Standing rigging	Rod 1995
Brand mast	Sparcraft
Material mast	aluminium
Spreaders	2
Keel stepped mast	interior mast lining with elk skin
Mainsail cover	Maindrop lazy jacks (2018)
Battcars	Harken Batten Traveler
Fully battened mainsail	Wittevrongel Radial Pentex 2011
Jib	Stormjib 6 m2 Dacron
High aspect	Triradial Pentex (2013)
Genoa I	only used at sea during holidays Witevrongel Triradial Pentex 130% (2015)
Genoa II	North Sails Dacron 150% (1995)
Genoa furler	Harken MK2
Spinnaker	with cover North Sails True Radial 140m2 (1995)
Backstay adjuster	hydraulic Navtec
Boomvang	Fixed
Primary sheet winch	2x Harken 53 ST
Secondary sheet winch	2x Harken 40ST
Spinnaker winch	2x Harken 48ST
Multifunctional winches	2x Harken 42ST
Spi-pole	aluminium Attached to the mast



Extra info

Dyneema backstays

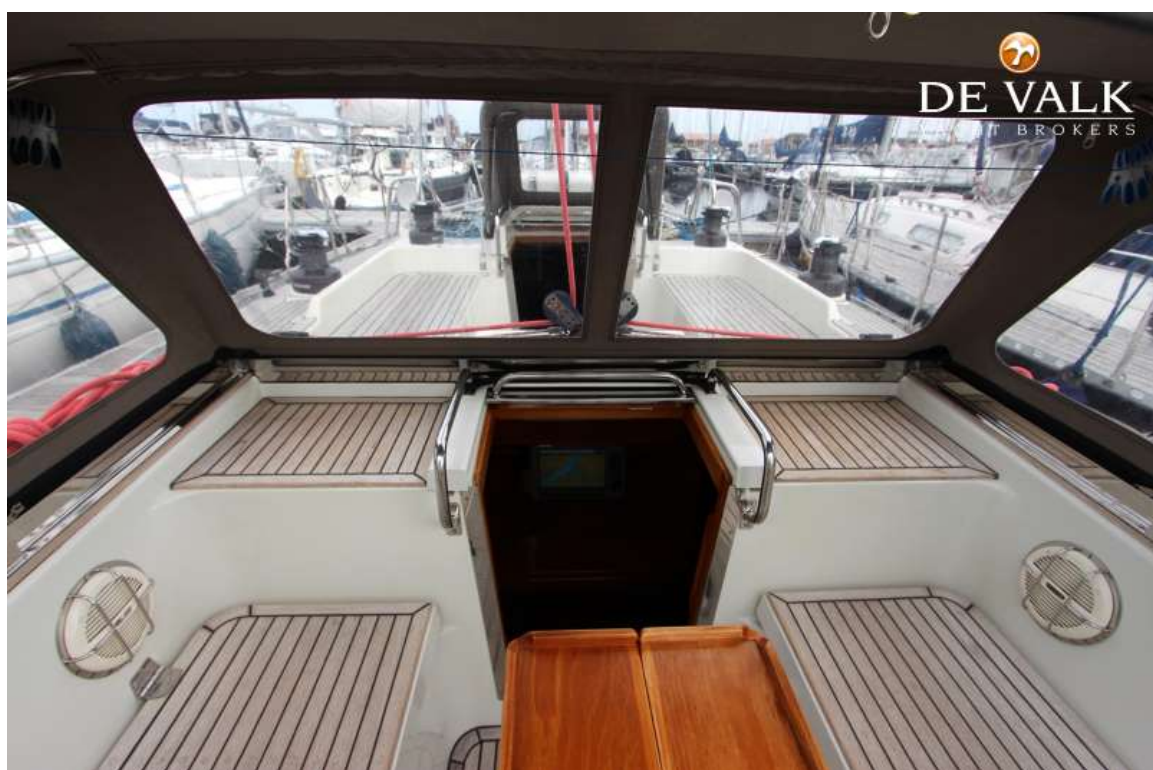














JONMERI 40







JONMERI 40



JONMERI 40



JONMERI 40



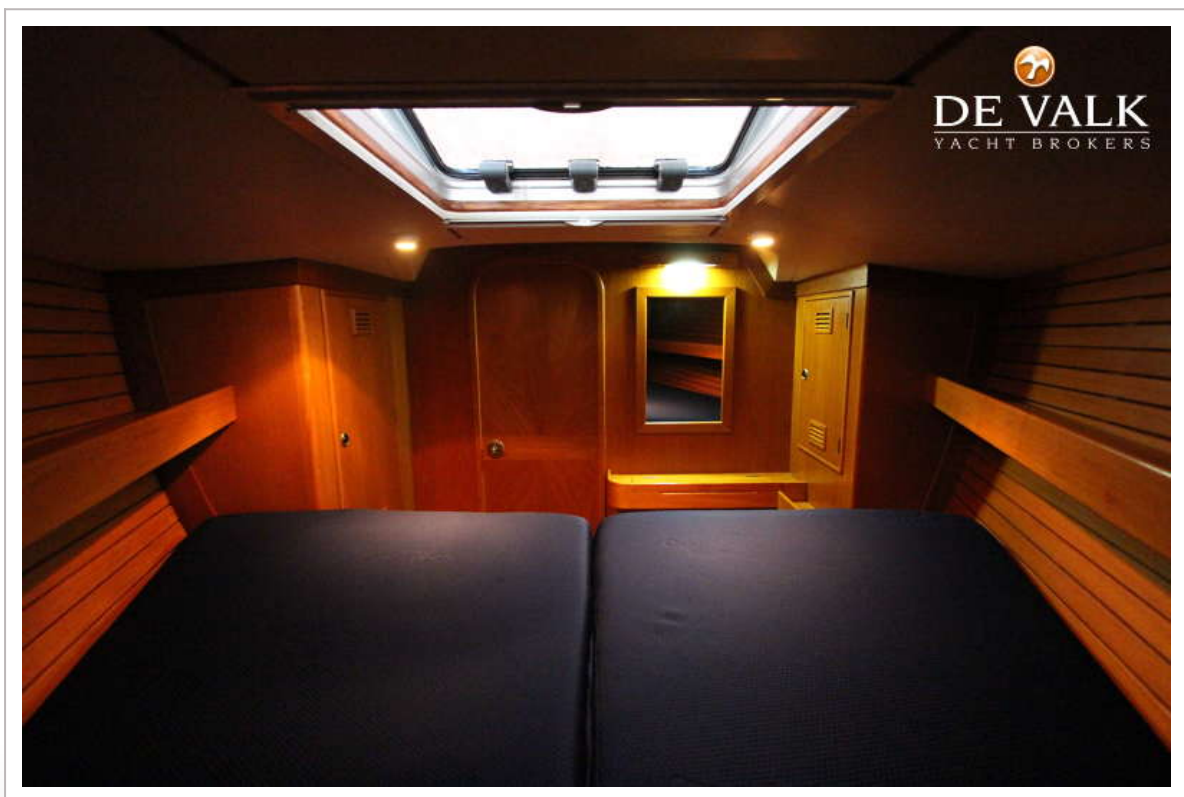
JONMERI 40



JONMERI 40



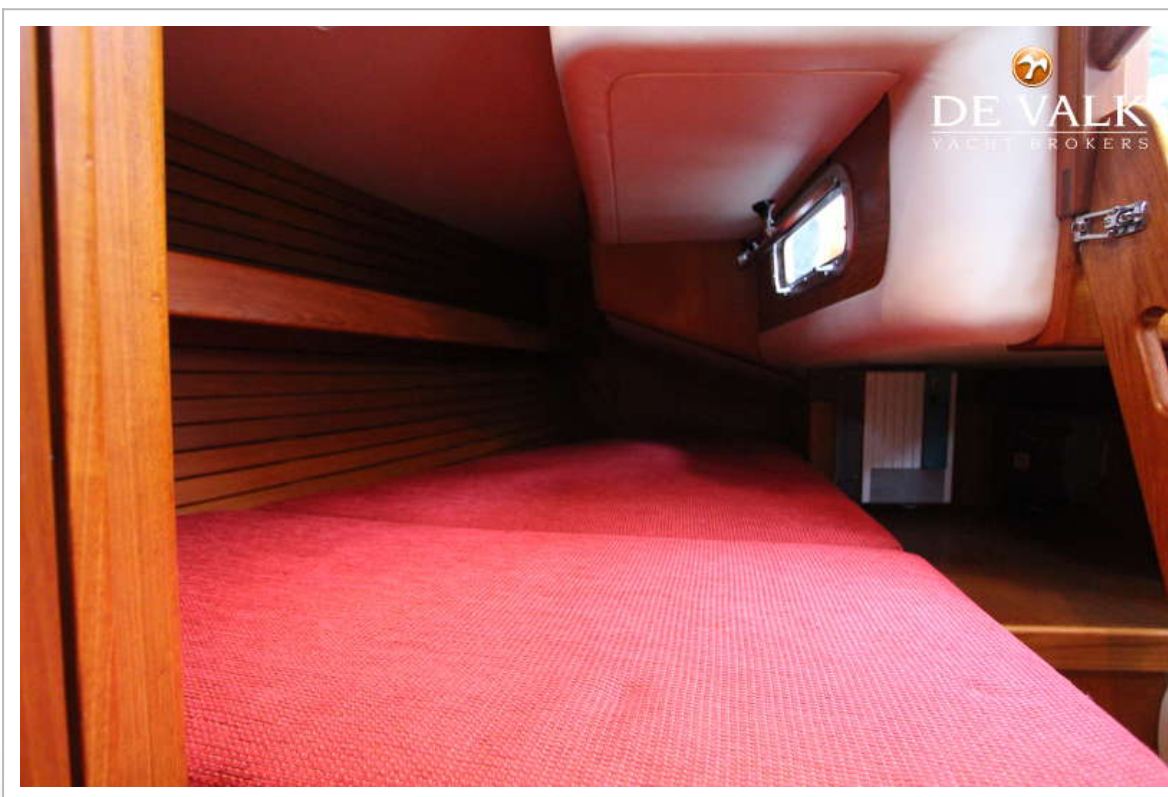
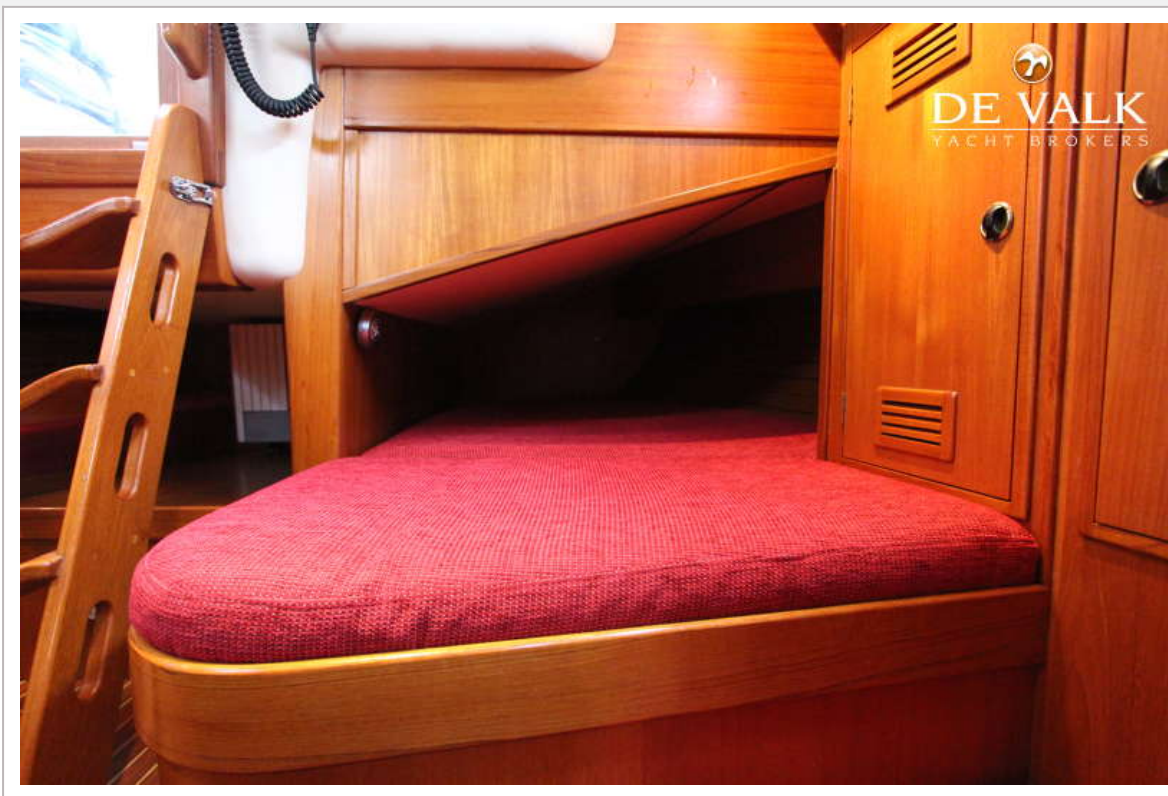
JONMERI 40



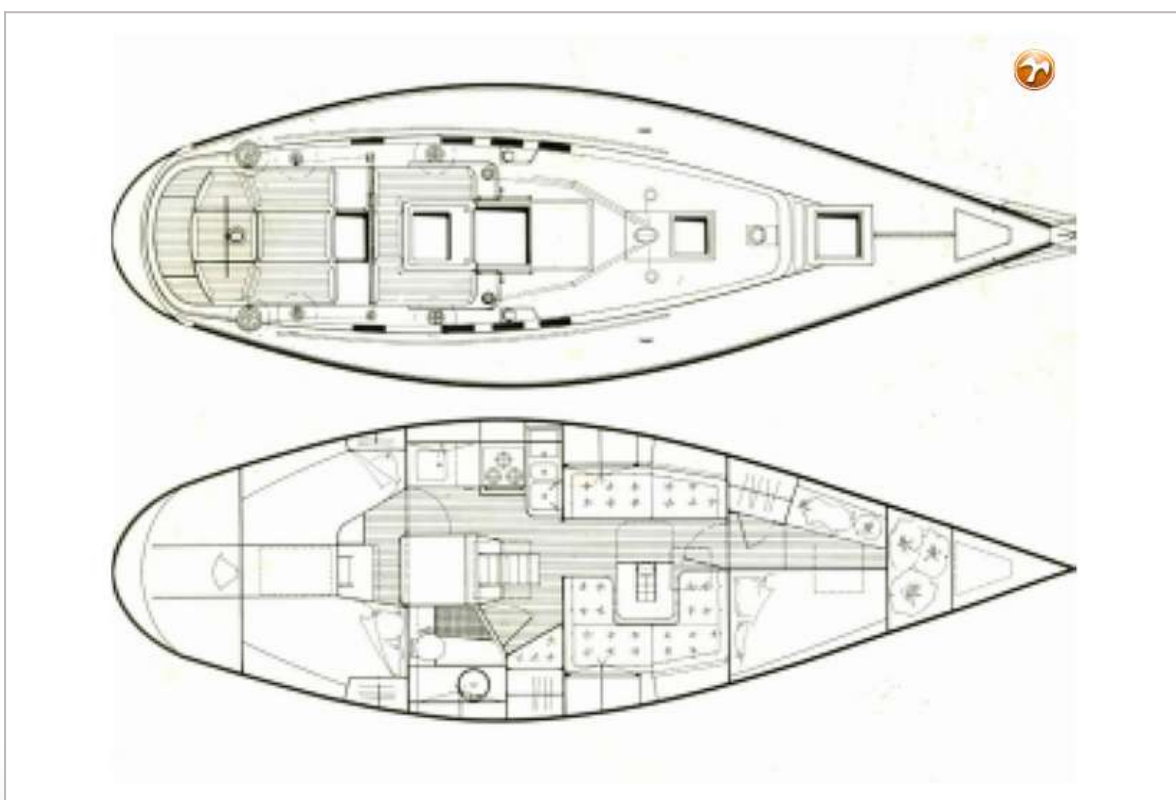
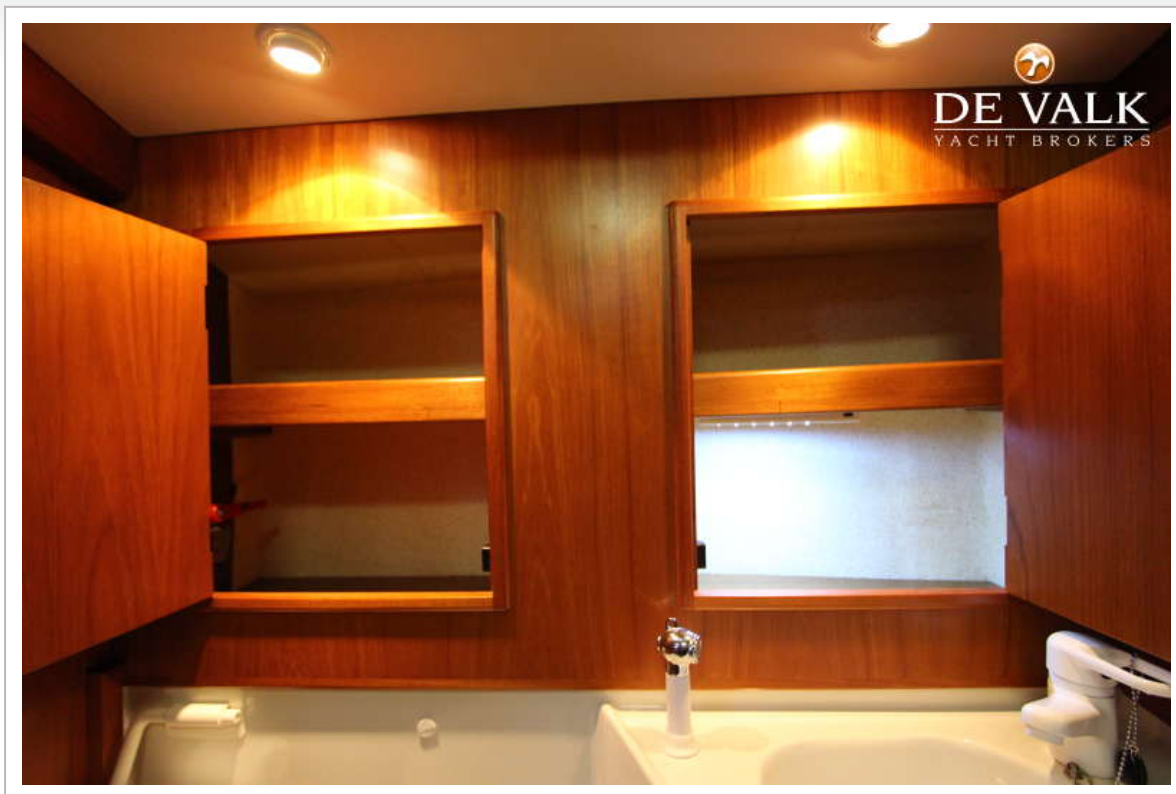
JONMERI 40



JONMERI 40







JONMERI 40

