



DE VALK  
YACHT BROKERS



## WAUQUIEZ CENTURION 47



DE VALK  
YACHT BROKERS

# WAUQUIEZ CENTURION 47

## BROKER'S COMMENTS

Excellent Ed Dubois offshore cruising yacht with speed potential. Heavy duty build quality by Wauquiez with ample inventory and cruising equipment. Deep, safe and comfortable cockpit with ample size winches and stowage. Now with her third owner, she has been updated with lots of renewals including a set of North sails. Engine was new installed in 2004. She can be sailed comfortably at higher speed or used for the ultimate leisure cruise. Moderate draft keel with wings for easy-access into harbors. Comfortable three cabin layout with twin fully equipped bathrooms.

*Marc Weijenberg*

## SPECIFICATIONS

<b>Dimensions</b>	14.80 x 4.47 x 2.20 (m)	<b>Builder</b>	Chantiers Henri Wauquiez
<b>Built</b>	1984	<b>Cabins</b>	3
<b>Material</b>	GRP	<b>Berths</b>	7
<b>Engine(s)</b>	1 x Yanmar 4JH3T diesel	<b>Hp/Kw</b>	75.00 (hp), 55.13 (kw)
<b>Asking price</b>	sold (VAT )	<b>Lying</b>	at sales office

## CONTACT

<b>Sales office</b>	De Valk Sint Annaland B.V.	<b>Telephone</b>	+31 (0)166 601 000
<b>Address</b>	Koelhuisweg 4 4697 RM Sint Annaland NL	<b>E-mail</b>	sintannaland@devalk.nl

## DISCLAIMER

These particulars are given in good faith as supplied but cannot be guaranteed.



## GENERAL

Model	WAUQUIEZ CENTURION 47
Type	sailing yacht
LOA (m)	14,80
LWL (m)	11,75
Beam (m)	4,47
Draft (m)	2,20
Air draft (m)	23,00
Headroom (m)	2,00
Year built	1984
Builder	Chantiers Henri Wauquiez
Country	France
Designer	Ed Dubois
Displacement (t)	14
Ballast (tonnes)	lead 5,8
Hull material	GRP
Hull colour	white
Hull shape	round-bilged
Keel type	wing keel
Superstructure material	GRP
Deck material	GRP
Deck finish	teak
Superstructure deck finish	teak
Cockpit deck finish	teak
Dorades	6 x
Window material	polycarbonate
Portholes	aluminium
Radar arch	non collapsible
Fuel tank (litre)	stainless steel 280
Level indicator (fuel tank)	yes
Fuel daytank (litre)	polyethylene 40



Level indicator (daytank)	yes
Freshwater tank (litre)	stainless steel 150+130+80
Level indicator (freshwater)	yes
Blackwater tank (litre)	polyethylene 45 (2008)
Blackwater tank extraction	pump
Wheel steering	mechanical Whitlock
Emergency tiller	yes
Extra info	2009 windows replaced (without frames) 2009 through hull fittings and seacocks renewed

## ACCOMMODATION

Cabins	3
Berths	7
Interior	teak
Floor	teak and holly
Saloon	with U-shape settee
Headroom saloon (m)	yes
Heating	diesel ducted hot air Webasto HL90 9kW
Chart table	yes
Galley	yes
Countertop	plastic
Sink	stainless steel 2 x
Cooker	Eno 2 burner (2009)
Oven	Eno (2009)
Fridge	Adler Barber (2007)
Freezer	Adler Barber (2007)
Hot water system	220V + engine (2008)
Water pressure system	electrical
Manual and/or foot pump	fresh + saltwater 2 x
Owners cabin	double bed
Bed length (m)	2,00 x 1,40



Wardrobe	hanging/drawers/shelves
Bathroom	en suite I
Toilet	en suite
Toilet system	vacuum
Wash basin	in the bathroom
Shower	en suite
Guest cabin 1	double bed
Bed length (m)	2,00 x 1,20
Wardrobe	hanging and drawers
Bathroom	shared II
Toilet	shared
Toilet system	electric
Wash basin	in the bathroom
Shower	shared
Guest cabin 2	bunk bed
Bed length (m)	2,00 x 0,65
Wardrobe	hanging and drawers
Bathroom	shared II
Extra info	galley rebuilt 2009

## MACHINERY

No of engines	1
Make	Yanmar
Type	4JH3T
HP	75,00
kW	55,13
Fuel	diesel
Year installed	2004
Maximum speed (kn)	8
Cruising speed (kn)	7
Consumption (l/hr)	4



Engine hours	2000
Engine cooling system	freshwater heat exchanger
Drive	shaft
Engine controls	bowden cable
Gearbox	ZF 63 IV (+spare)
Bowthruster	electric Sidepower SE120 (8,5 hp)
Exhaust	watercooled
Propeller type	feathering Max Prop
Propeller blades	3
Propeller shaft material	stainless steel
Shaft lubrication	water
Manual bilge pump	1 x
Electric bilge pump	3 x
Electrical installation	12/220v
Start battery	108 amp (2012)
Service battery	4 x AGM 120 amp (2012)
Bowthruster battery	2 x 108amp (2009)
Battery monitor	Victron (2008)
Battery charger/inverter	Victron Phoenix 12v/1600 watt/70 amp (2008)
Solar panel	with smart regulator 2 x Blue Solar 100 watt
Diode battery combiners	2 x Victron Cyrix relais
Shorepower	with cable
Watermaker	32 ltr/hr EC H20 Tec type200DML-1
Extra info	extra heavy duty Balmar 150amp alternator (2012) twin Racor fuelfilter system with magnetic anti-bacteria element

## NAVIGATION

Compass	Sestel Major
Electric compass	Via autopilot
Depth sounder	Raymarine ST60 (2009)
Log	Raymarine ST60 (2009)



Windset	Raymarine ST60 (2009)
Repeater	Raymarine ST60 (2009)
VHF	+ cockpit speaker Standard Horizon GX1700E (internal gps)
Autopilot	Raymarine ST6002 (2009, SPX course computer +S100 smart control)
Rudder angle indicator	Via autopilot
GPS	Raymarine Raystar 125 (2009)
Radar/plotter	Raymarine C90 +4kW radar (2010)
Navtex	Nasa Navtes for PC (2010)
PC connection	yes
AIS receiver	Garmin 300 (2010)

## EQUIPMENT

Sprayhood	in the event the fixed dodger is removed
Dodger	fixed, built in epoxy
Cockpit cushions	yes
Cockpit table	yes
Bathing platform	yes
Boarding ladder	stainless steel
Deck shower	hot + cold
Anchor	CQR Plough Stainless steel
Anchor chain	60 mtr
Anchor 2	Fortress Aluminum
Anchor chain	30 mtr
Windlass	electrical Lofrans 1500 watt
Sea railing	stainless steel
Railing side opening gates	yes
Pushpit	yes
Pulpit	yes
Life raft	valise (or bag) DBC Lifepac
Life raft (pers)	4



Last life raft survey	2007
Lifejackets	6
Lifebuoy	with light
Radar reflector	yes
Fenders	yes
Mooring lines	yes
Spare parts	yes
TV	Samsung
TV receiver	digital
Radio-cd player	PioneerP4900
DVD player	yes
Speakers in salon	yes
Speakers in cabin	yes
Clock - barometer	yes
Fire extinguisher	2 x
Latest extinguisher survey	2014
Extinguisher in engine room	yes
Extra info	Excellent Ed Dubois offshore cruising yacht with speed potential. Heavy duty build quality by Wauquiez with ample inventory and cruising equipment. Deep, safe and comfortable cockpit with ample size winches and stowage. Now with her third owner, she has been updated with lots of renewals including a set of North sails. Engine was new installed in 2004. She can be sailed comfortably at higher speed or used for the ultimate leisure cruise. Moderate draft keel with wings for easy-access into harbors. Comfortable three cabin layout with twin fully equipped bathrooms.

## RIGGING

Rigging	sloop-cutter
Standing rigging	wire (2004 new)
Brand mast	Seldén
Material mast	aluminium





<b>Spreaders</b>	3 x
<b>Keel stepped mast</b>	yes
<b>Mainsail cover</b>	(2011)
<b>Battcars</b>	yes
<b>Fully battened mainsail</b>	North Sails (2011 5 battens, NSP 9,8 oz)
<b>Genoa</b>	North Sails (2011, 130% NSP 9,8 oz)
<b>Genoa furler</b>	Furlex
<b>Spinnaker</b>	yes older but very useable
<b>Staysail</b>	North Sails (2011, 100% SSP 9,8oz)
<b>Staysail furler</b>	Harken
<b>Reefing System</b>	slabreefing
<b>Backstay adjuster</b>	hydraulic Navtec
<b>Boomvang</b>	hydraulic Navtex
<b>Primary sheet winch</b>	2 x Lewmar 65ST
<b>Secondary sheet winch</b>	2 x Lewmar 55ST
<b>Halyard winches</b>	electric 1 x Lewmar 43AEST (2009)
<b>Spinnaker winch</b>	2 x Lewmar 43ST
<b>Multifunctional winches</b>	Lewmar 2 x 43ST + 46ST
<b>Spi-pole</b>	aluminium 2x (2010)









# WAUQUIEZ CENTURION 47



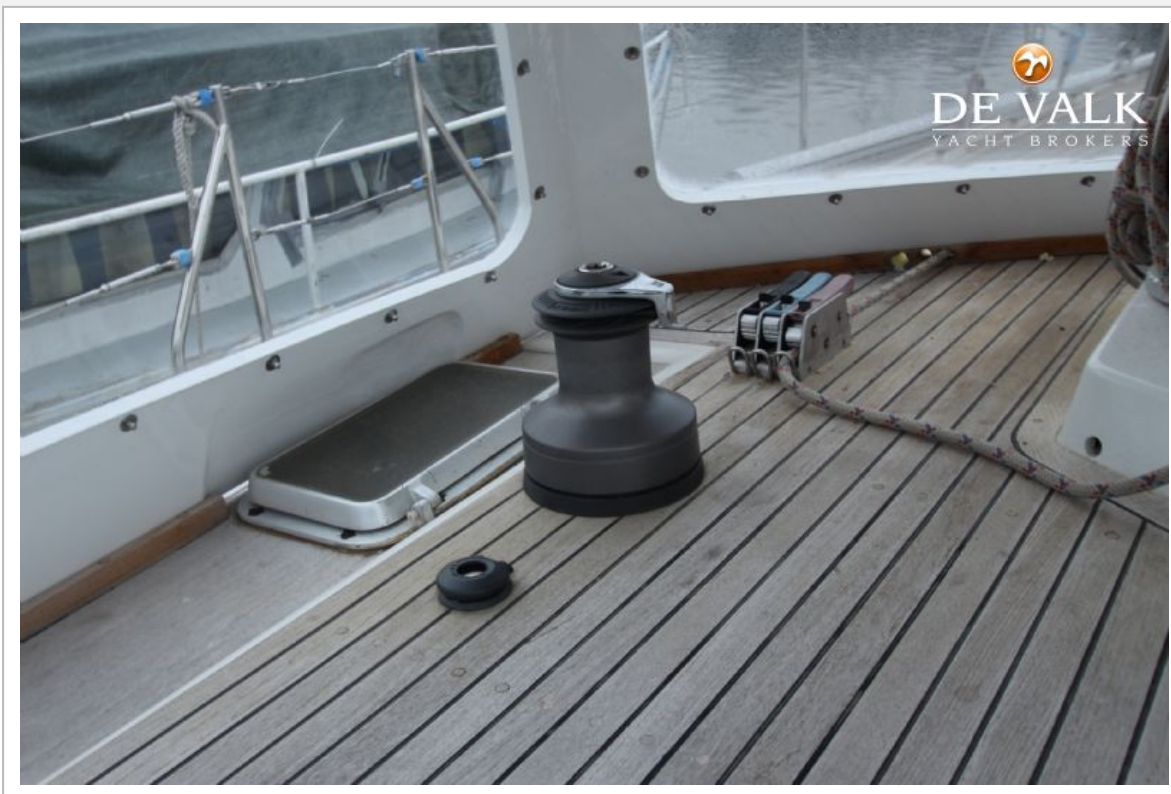
# WAUQUIEZ CENTURION 47







# WAUQUIEZ CENTURION 47











# WAUQUIEZ CENTURION 47





# WAUQUIEZ CENTURION 47



# WAUQUIEZ CENTURION 47

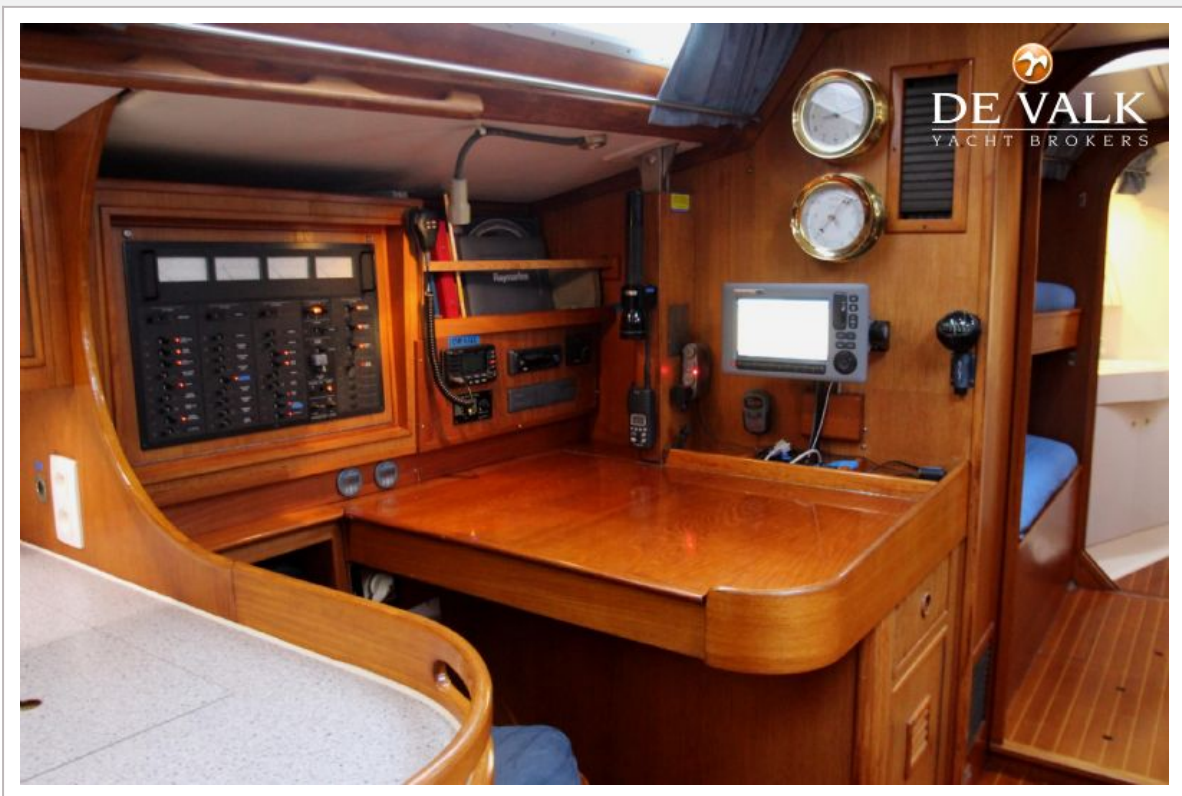




# WAUQUIEZ CENTURION 47

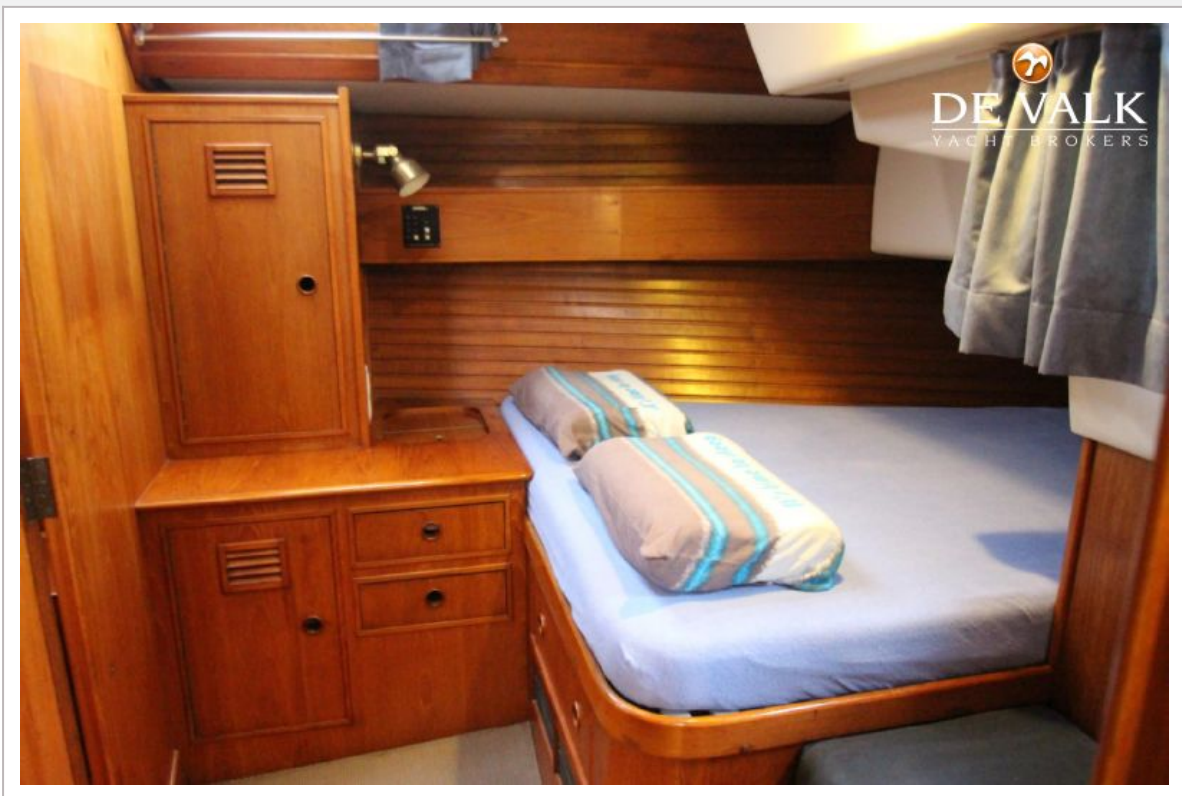


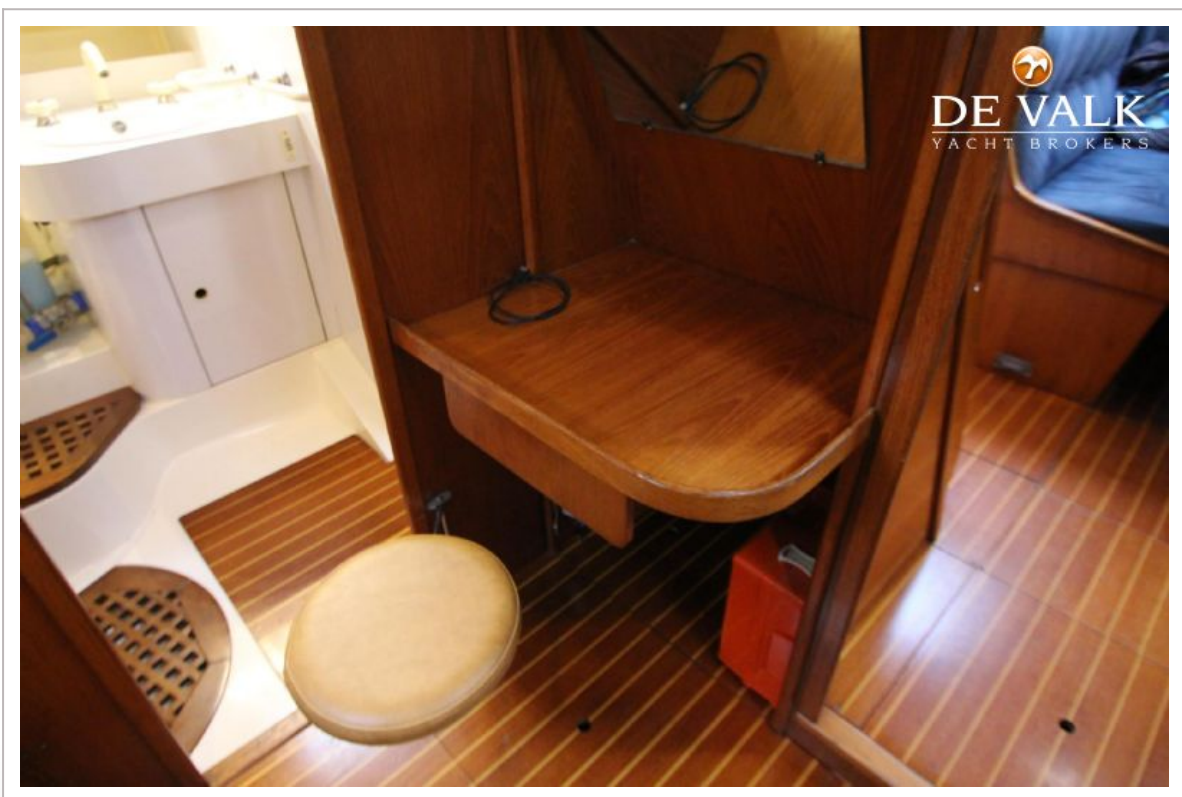
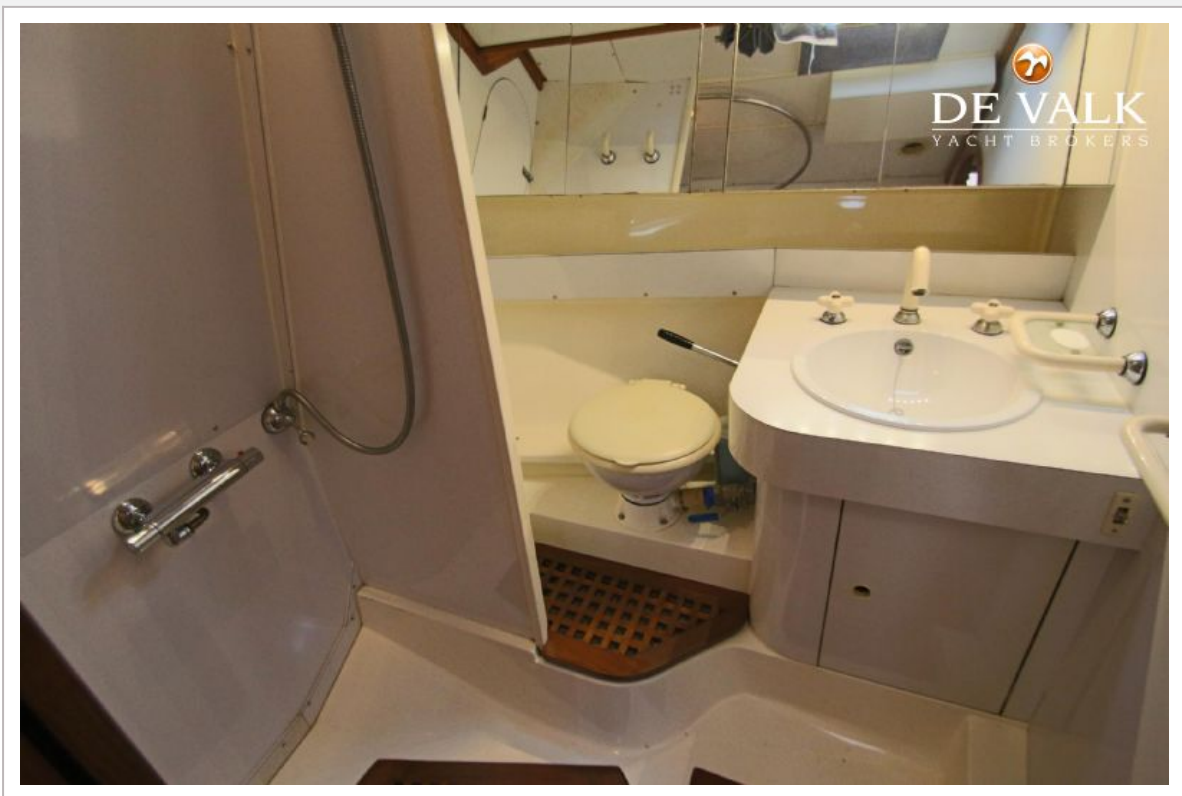
# WAUQUIEZ CENTURION 47





# WAUQUIEZ CENTURION 47







# WAUQUIEZ CENTURION 47



# WAUQUIEZ CENTURION 47





