



DE VALK  
YACHT BROKERS



## BENETEAU OCEANIS 37



DE VALK  
YACHT BROKERS

## BROKER'S COMMENTS

Benetau Oceanis range; well balanced, comfortable, safe and reliable performance are the characteristics that are so much appreciated by many owners. The 37 model was the stepping stone for further innovations and the Nauta Design interior is contemporary without losing the warm and welcome feeling of quality mahogany. Performance wise the Finot design group has achieved a responsive modern hull design that will bring a smile on your face while sailing.

*Marc Weijenberg*

## SPECIFICATIONS

<b>Dimensions</b>	11.48 x 3.92 x 1.95 (m)	<b>Builder</b>	Beneteau Sarl
<b>Built</b>	2009	<b>Cabins</b>	2
<b>Material</b>	GRP	<b>Berths</b>	6
<b>Engine(s)</b>	1 x Yanmar 3YM30 diesel	<b>Hp/Kw</b>	29.00 (hp), 21.32 (kw)
<b>Asking price</b>	sold (VAT )	<b>Lying</b>	at sales office

## CONTACT

<b>Sales office</b>	De Valk Sint Annaland B.V.	<b>Telephone</b>	+31 (0)166 601 000
<b>Address</b>	Koelhuisweg 4 4697 RM Sint Annaland NL	<b>E-mail</b>	sintannaland@devalk.nl

## DISCLAIMER

These particulars are given in good faith as supplied but cannot be guaranteed.



## GENERAL

Model	BENETEAU OCEANIS 37
Type	sailing yacht
LOA (m)	11,48
LWL (m)	10,40
Beam (m)	3,92
Draft (m)	1,95
Air draft (m)	16,70
Headroom (m)	1,94
Year built	2009
Builder	Beneteau Sarl
Country	France
Designer	Finot Conq & Nauta Design
Displacement (t)	6,4
Ballast (tonnes)	cast iron 1,77
CE norm	A
Hull material	GRP
Hull colour	Metallic dark blue
Hull shape	round-bilged
Keel type	fin keel
Superstructure material	GRP
Deck material	GRP
Deck finish	teak
Superstructure deck finish	anti-slip moulded in
Cockpit deck finish	teak
Window material	polycarbonate
Deckhatch	yes
Portholes	aluminium
Fuel tank (litre)	polyethylene 130
Freshwater tank (litre)	polyethylene 346
Blackwater tank (litre)	polyethylene 80



Blackwater tank extraction	deck extraction
Wheel steering	cable steering Goiot
Emergency tiller	yes
Extra info	leather covered steeringwheel metallic blue hull finish extra portholes mosquito and hatch blinds commissioned 2010

## ACCOMMODATION

Cabins	2
Berths	6
Interior	mahogany Alpi
Floor	teak and holly
Saloon	yes
Headroom saloon (m)	1,94
Heating	diesel ducted hot air Eberspacher Airtronic
Chart table	yes
Dinette	yes
Galley	yes
Countertop	plastic
Sink	stainless steel
Cooker	calor gas Two burner
Oven	in stove
Hot water system	220V + engine
Water pressure system	electrical
Manual and/or foot pump	yes
Owners cabin	double bed Aft/achter/hinten
Bed length (m)	2,10 x 1,87
Wardrobe	shelves and hanging
Bathroom	1 x
Toilet	shared
Toilet system	electric Jabsco
Wash basin	in the bathroom



Shower	separate
Guest cabin 1	double bed Forward/voor/vorne
Bed length (m)	1,95 x 1,55
Wardrobe	hanging/drawers/shelves
Extra info	extra cupboards in salon

## MACHINERY

No of engines	1
Make	Yanmar
Type	3YM30
HP	29,00
kW	21,32
Fuel	diesel
Year installed	2009
Maximum speed (kn)	7
Cruising speed (kn)	6
Consumption (l/hr)	3,4
Engine hours	465
Engine cooling system	freshwater heat exchanger
Drive	shaft
Engine controls	bowden cable
Gearbox	mechanical
Exhaust	watercooled
Propeller type	fixed
Propeller blades	3
Propeller shaft material	stainless steel
Shaft lubrication	water
Manual bilge pump	yes
Electric bilge pump	yes
Electrical installation	12/220v
Start battery	1 x 70 amp



Service battery	2 x 110amp
Battery monitor	yes
Battery charger	Dolphin 25amp
Inverter	Mastervolt 12->220v
Shorepower	with cable

## NAVIGATION

Compass	Plastimo
Electric compass	Via autopilot
Depth sounder	Raymarine ST70
Log	Raymarine ST70
Windset	Raymarine ST70
VHF	Raymarine 49E
Autopilot	+ remote Raymarine SPX ST70 + gyro compass
GPS	Raymarine
Plotter	Raymarine C-80
PC connection	yes

## EQUIPMENT

Sprayhood with grab rail	yes
Cockpit cushions	yes
Cockpit table	intergrated with cover
Bathing platform	yes
Boarding ladder	stainless steel
Transom door	yes
Deck shower	hot+cold
Anchor	Brittany
Anchor chain	25 mtr + 38 mtr line
Windlass	Quick 1000 watt
Sea railing	stainless steel
Railing side opening gates	yes



Pushpit	yes
Pulpit	yes
Life raft	container Alive International
Life raft (pers)	8
Last life raft survey	07/2014
Lifebuoy	yes
Fenders	yes
Mooring lines	yes
TV	LG
Radio-cd player	LG +MP3
Cockpit speakers	yes
Speakers in salon	yes
Fire extinguisher	yes

## RIGGING

Rigging	sloop 9/10
Standing rigging	wire
Brand mast	Z-Spar
Material mast	aluminium
Spreaders	2 sets
Mainsail	partially battened
Mainsail cover	+ Lazy Jacks
Genoa	yes
Genoa furler	Facnor
Reefing System	quick-one-line-reefing
Boomvang	mechanical
Primary sheet winch	2 x Harken 46.2STC
Halyard winches	2 x Harken 35.2STC





# BENETEAU OCEANIS 37





# BENETEAU OCEANIS 37



# BENETEAU OCEANIS 37





# BENETEAU OCEANIS 37

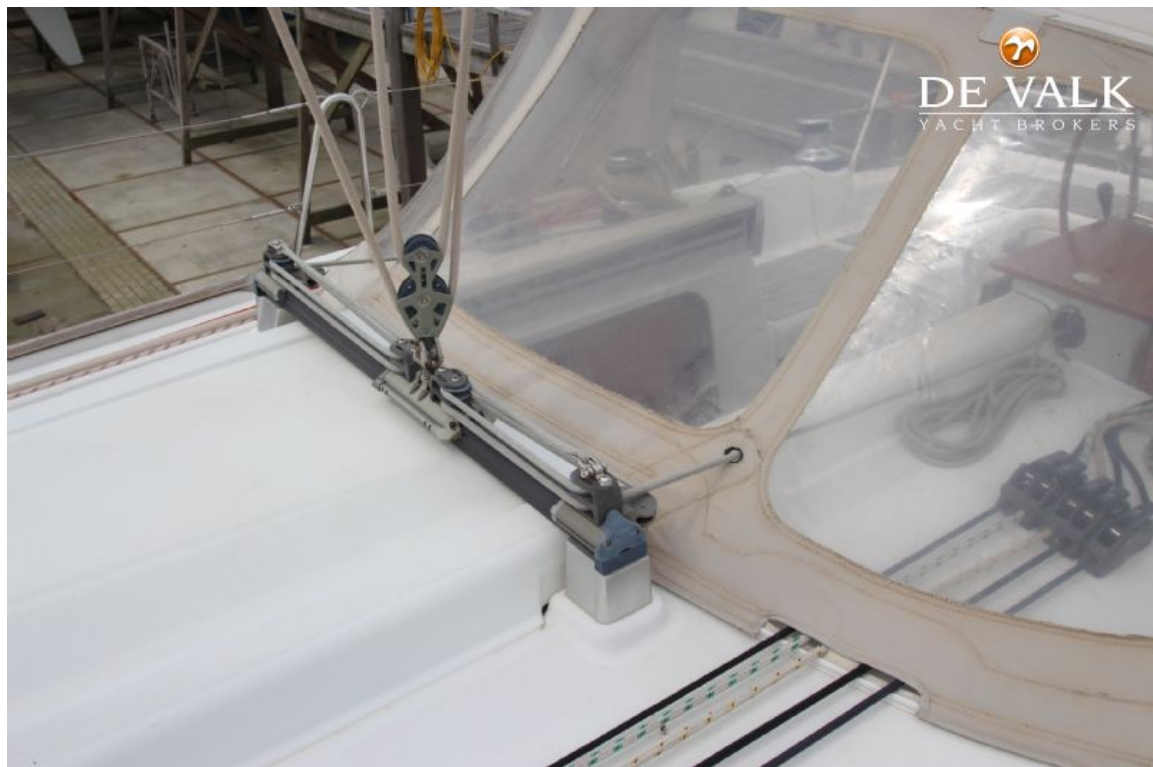


# BENETEAU OCEANIS 37





# BENETEAU OCEANIS 37



# BENETEAU OCEANIS 37

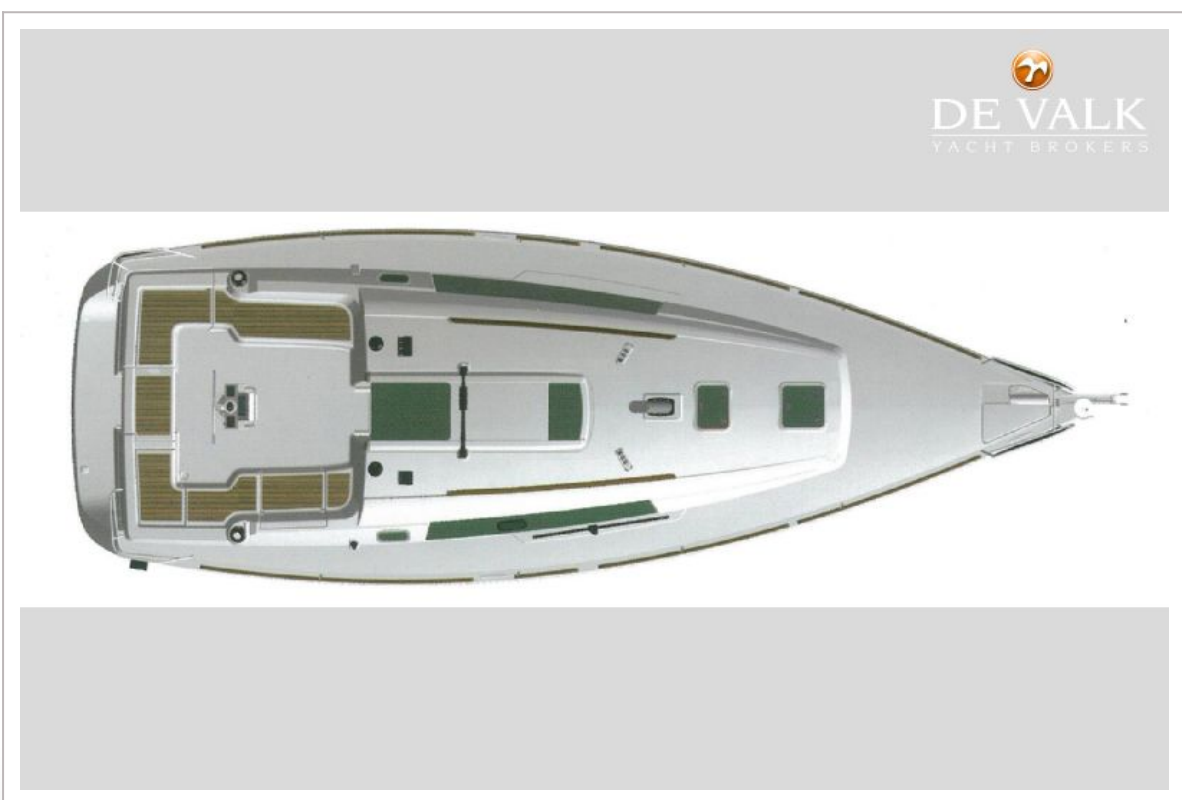
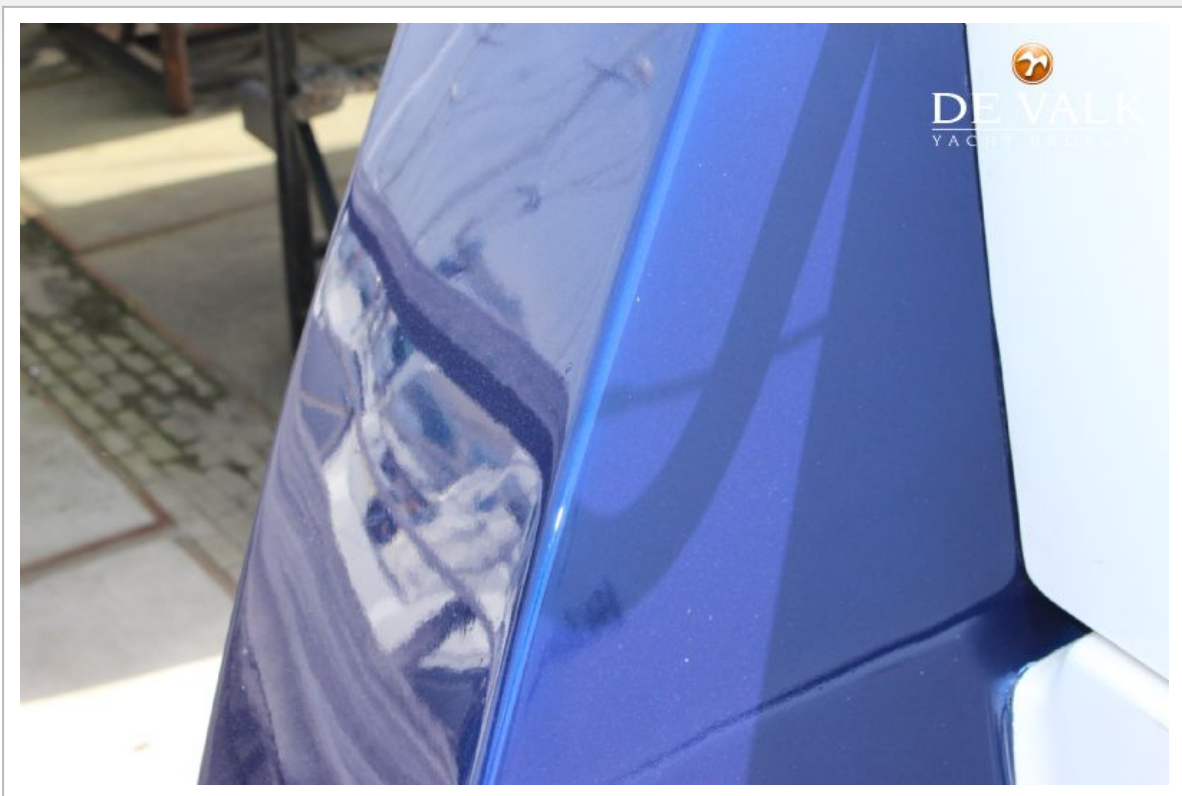




# BENETEAU OCEANIS 37



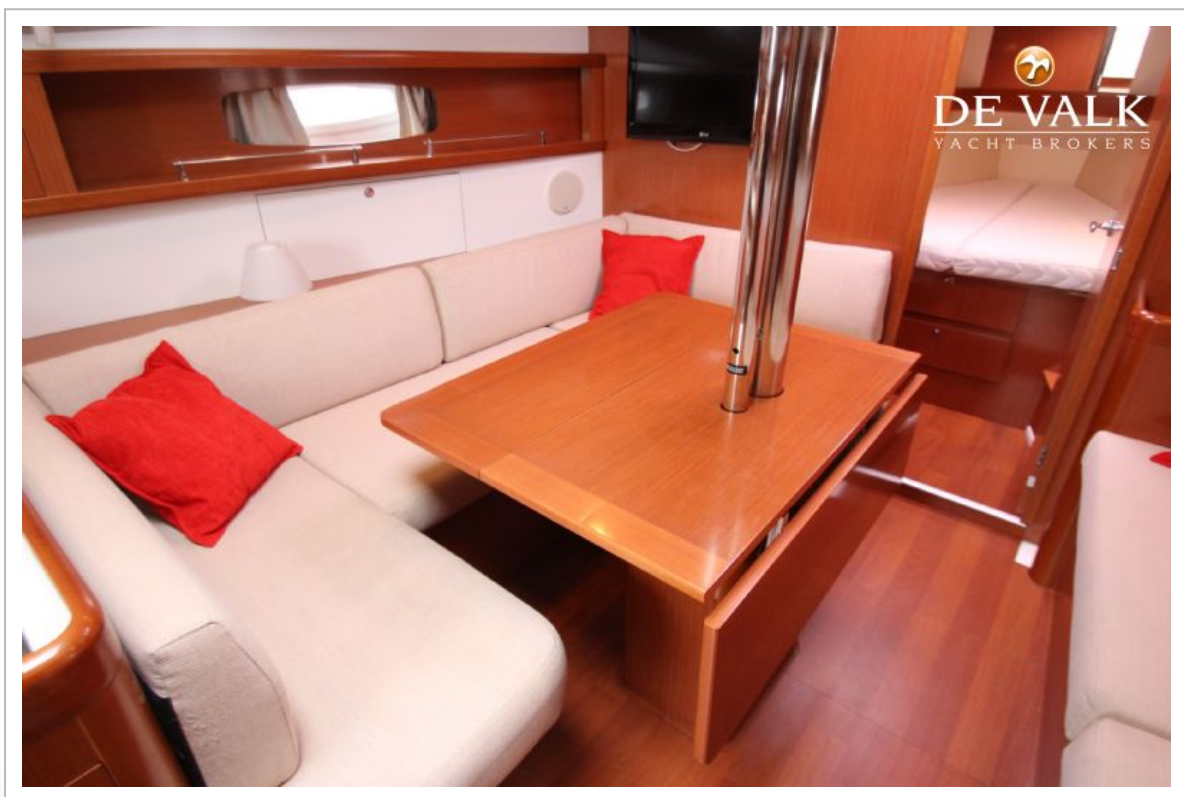




# BENETEAU OCEANIS 37



# BENETEAU OCEANIS 37





# BENETEAU OCEANIS 37



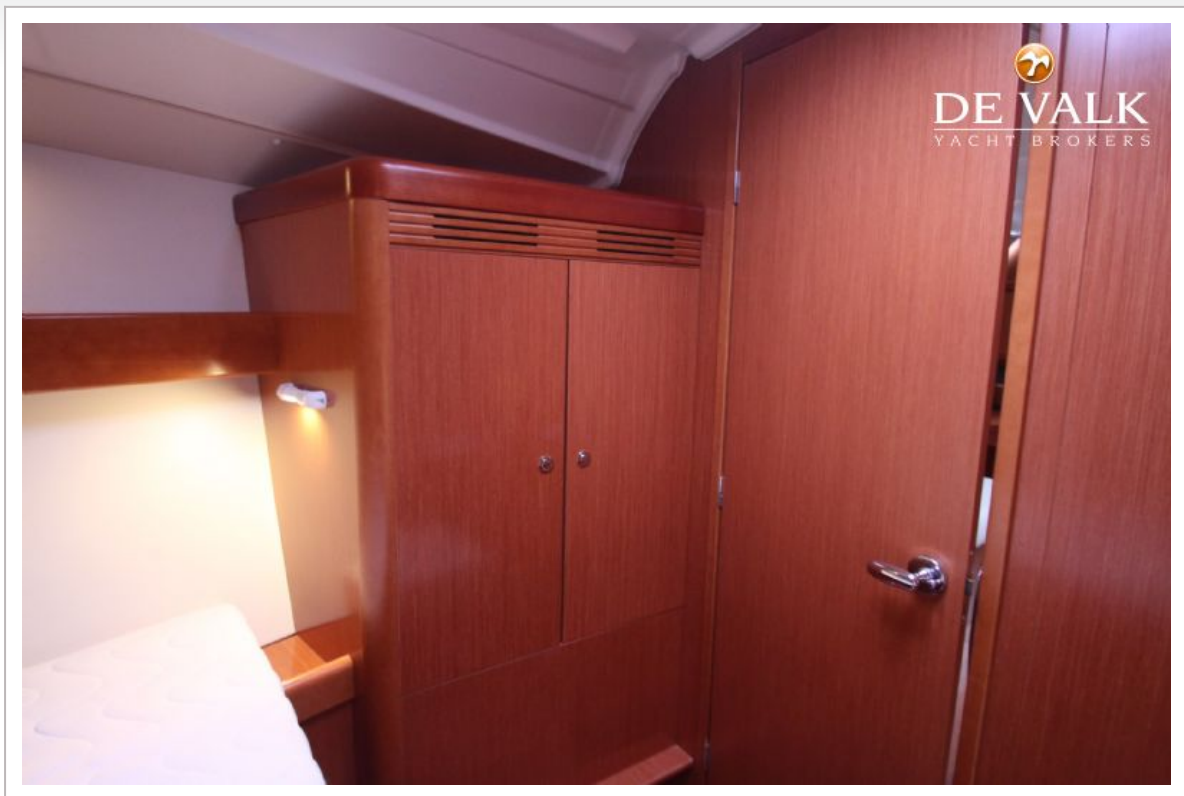
# BENETEAU OCEANIS 37







# BENETEAU OCEANIS 37





# BENETEAU OCEANIS 37



# BENETEAU OCEANIS 37



# BENETEAU OCEANIS 37





# BENETEAU OCEANIS 37

