



DE VALK
YACHT BROKERS



GRAND BANKS 42 CLASSIC



DE VALK
YACHT BROKERS

GRAND BANKS 42 CLASSIC

BROKER'S COMMENTS

All time Classic from the famous Grand Banks yard, the 42 Classic model is the ultimate cruiser trawler. Many times copied, non have succeeded. Easy access on deck, good accommodations, twin helm positions and storage space to boot. Her current owner took a lot of time, effort and money to have all the mechanical equipment up to date. Including new tanks, overhauled engines, electronics, generator, alum. window frames, etc etc. She needs some cosmetic work but if you compare the cost involved, this GB 42 is a pretty good offer.

Marc Weijenberg

SPECIFICATIONS

Dimensions	12.75 x 4.15 x 1.27 (m)	Builder	American Marine
Built	1973	Cabins	2
Material	GRP	Berths	5
Engine(s)	2 x Ford Lehman 2714E diesel	Hp/Kw	2 x 120.00 (hp), 88.20 (kw)
Asking price	sold (VAT)	Lying	at sales office

CONTACT

Sales office	De Valk Sint Annaland B.V.	Telephone	+31 (0)166 601 000
Address	Koelhuisweg 4 4697 RM Sint Annaland NL	E-mail	sintannaland@devalk.nl

DISCLAIMER

These particulars are given in good faith as supplied but cannot be guaranteed.



GRAND BANKS 42 CLASSIC

GENERAL

Model	GRAND BANKS 42 CLASSIC
Type	motor yacht
LOA (m)	12,75
Beam (m)	4,15
Draft (m)	1,27
Air draft (m)	3,72
Headroom (m)	1,98
Year built	1973
Builder	American Marine
Country	Singapore
Designer	Alan Hunt
Displacement (t)	15
Hull material	GRP
Hull colour	white
Hull shape	full bilged
Superstructure material	GRP
Rubbing strake	yes
Deck material	GRP
Deck finish	anti-slip paint
Superstructure deck finish	anti-slip paint
Window frame	aluminium
Window material	tempered glass
Portholes	yes
Flybridge	yes
Flybridge cover	yes
Mast can be lowered	manual
Steadying sail with mast	aluminum V/d Neut (2010)
Fuel tank (litre)	stainless steel 2 x 455 (2006)
Level indicator (fuel tank)	yes
Freshwater tank (litre)	GRP 2 x 465



GRAND BANKS 42 CLASSIC

Blackwater tank (litre)	polyethylene 2012
Blackwater tank extraction	deck extraction
Wheel steering	cable steering
Inside helm position	yes
Outside helm position	yes
Emergency tiller	yes
Extra info	Uw body epoxy coated 2014 Teakdeck removed, epoxy coated and sealed 2009 Hull, deck and superstructure painted 2010 Windowframes removed and aluminum frames mounted 2011 Ceilings renewed 2010 Most seacocks renewed 2010 Stainless steel tanks fitted

ACCOMMODATION

Cabins	2
Berths	5
Interior	teak
Floor	teak
Aft deck	yes
Pilot house/deck saloon	with panoramic view
Headroom saloon (m)	1,98
Heating	central heating Maritime Booster 2010
Navigation center	at helmposition
Dinette	L-shaped
Opening door to cockpit	port and starboard
Galley	yes
Countertop	plastic
Sink	stainless steel
Cooker	ceramic Scholtes 220v
Microwave	plus oven LG Combi (2010)
Fridge	with freezer compartment Vitrifrigo 12v (2010)
Hot water system	on central heating
Water pressure system	electrical



GRAND BANKS 42 CLASSIC

Owners cabin	twin single Aft/achter/hinten
Bed length (m)	2,00 x 1,08
Wardrobe	hanging and drawers
Bathroom	en suite I
Toilet	en suite
Toilet system	manual
Wash basin	in the bathroom
Shower	en suite
Bath tub	en suite
Guest cabin 1	v-bed Forward/voor/vorne
Bed length (m)	2,05 x 0,78
Wardrobe	shelves and hanging
Bathroom	II
Toilet	en suite
Toilet system	manual
Wash basin	in the bathroom
Shower	en suite

MACHINERY

No of engines	2
Make	Ford
Type	Lehman 2714E
HP	120,00
kW	88,20
Fuel	diesel
Year installed	1973
Year of overhaul	complete professional 2012
Maximum speed (kn)	9
Cruising speed (kn)	7
Consumption (l/hr)	5-7
Engine hours	325



GRAND BANKS 42 CLASSIC

Engine cooling system	freshwater heat exchanger
Drive	shaft
Engine controls	bowden cable
Gearbox	hydraulic Paragon
Bowthruster	electric Sidepower
Exhaust	watercooled
Propeller type	fixed
Propeller blades	3x
Propeller shaft material	stainless steel
Shaft lubrication	water
Electric bilge pump	yes
Electrical installation	12/220v
Generator	silent separator Mastervolt Whisper 3.5kW (2010)
Start battery	1 x 160amp (2010)
Service battery	3 x 230amp (2010)
Bowthruster battery	1 x 55 amp (2010)
Battery monitor	Mastervolt
Battery charger/inverter	Mastervolt 12/2500watt/100amp (2010)
Diode battery combiners	yes
Shorepower	with cable
Extra info	Prop shafts and stuffingboxes new 2010 Large portion of the electrics new 2010 Bowthruster motor new 2010 Algea X filters installed 2011 Fuellines new 2011

NAVIGATION

Compass	Plastimo Offshore 95 (2010)
Compass on flybridge	Plastimo Olympic 85 (2010)
Depth sounder	with repeater Raymarine ST60 (2010)
VHF	Icom IC-M411
Radar	Furuno 1632
Plotter	with flybridge connection Raymarine A70B (2010)
AIS receiver	AIS Watchmate Vespermarine



GRAND BANKS 42 CLASSIC

EQUIPMENT

Cockpit cover	flybridge cover (2011)
Bimini	yes
Bathing platform	yes
Boarding ladder	yes
Anchor	Delta
Anchor chain	yes
Windlass	electrical Lofrans Tigress 1200 watt
Deck wash	yes
Davits	stainless steel 2015
Davits controls	manual
Sea railing	teak
Grab rail (superstructure)	teak
Railing side opening gates	2 x
Pushpit	yes
Pulpit	yes
Life raft	container Sea-Go
Life raft (pers)	4
Last life raft survey	03-2013
Lifebuoy	yes
Wiper	2 x
Horn	yes
Radar reflector	Tri-Lens
Fenders	yes
Mooring lines	yes
Fire extinguisher	2 x



GRAND BANKS 42 CLASSIC



GRAND BANKS 42 CLASSIC



GRAND BANKS 42 CLASSIC



GRAND BANKS 42 CLASSIC



GRAND BANKS 42 CLASSIC



GRAND BANKS 42 CLASSIC



GRAND BANKS 42 CLASSIC



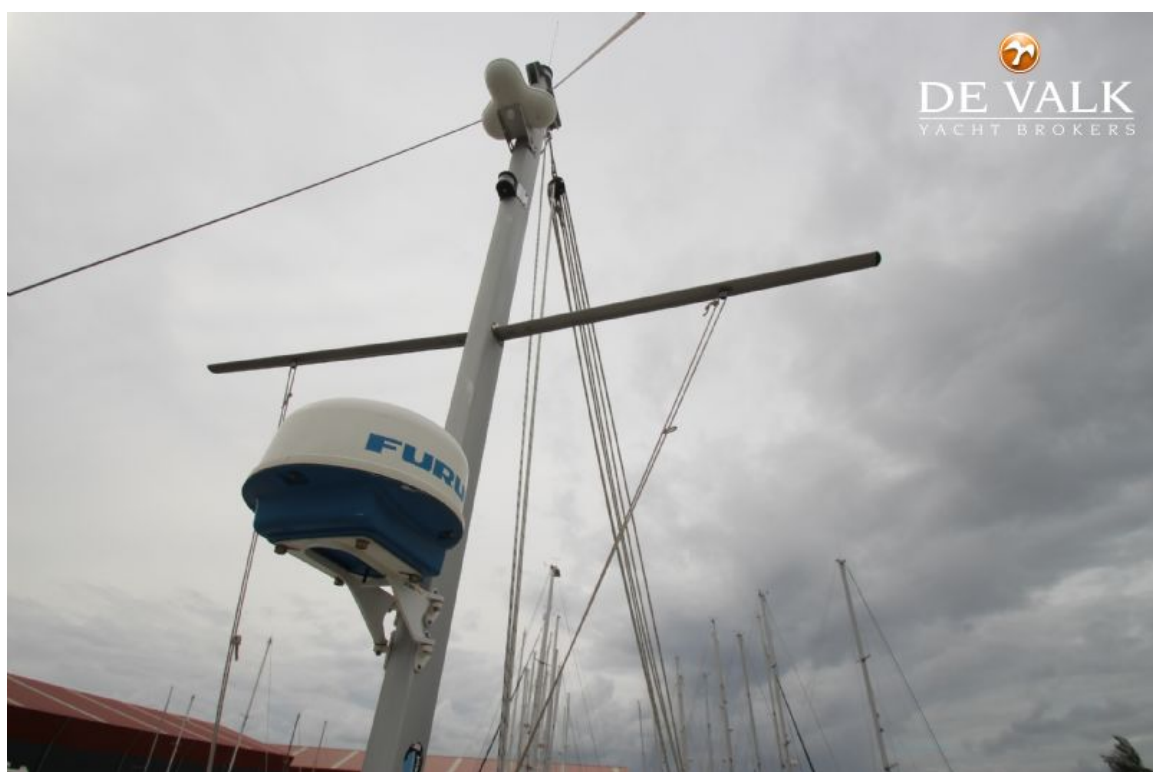
GRAND BANKS 42 CLASSIC



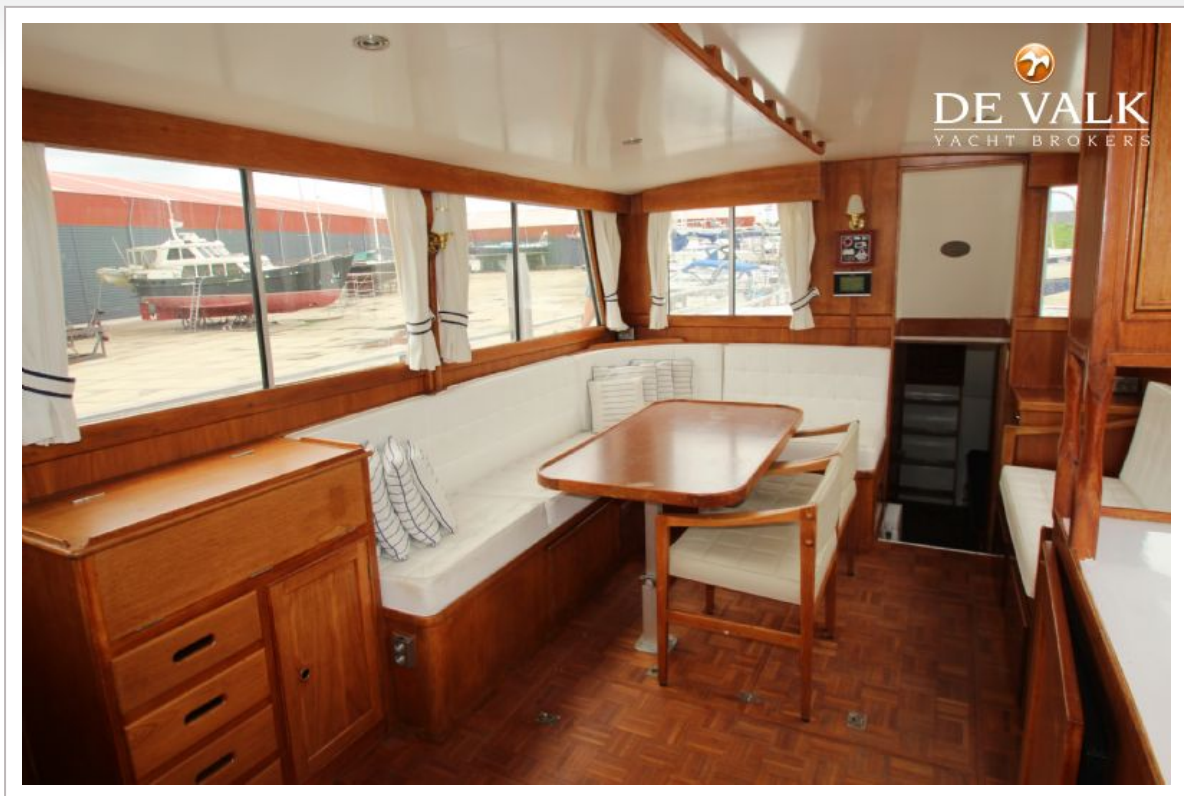
GRAND BANKS 42 CLASSIC



GRAND BANKS 42 CLASSIC



GRAND BANKS 42 CLASSIC



GRAND BANKS 42 CLASSIC



GRAND BANKS 42 CLASSIC



GRAND BANKS 42 CLASSIC



GRAND BANKS 42 CLASSIC



GRAND BANKS 42 CLASSIC



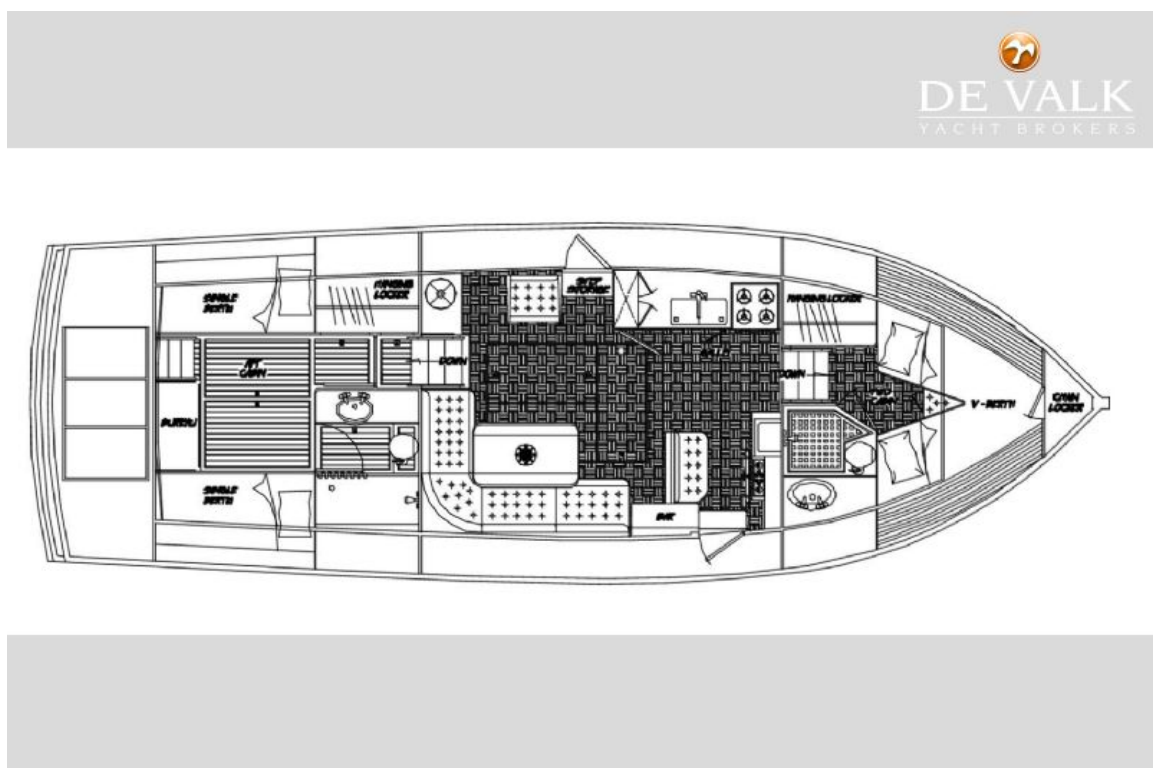
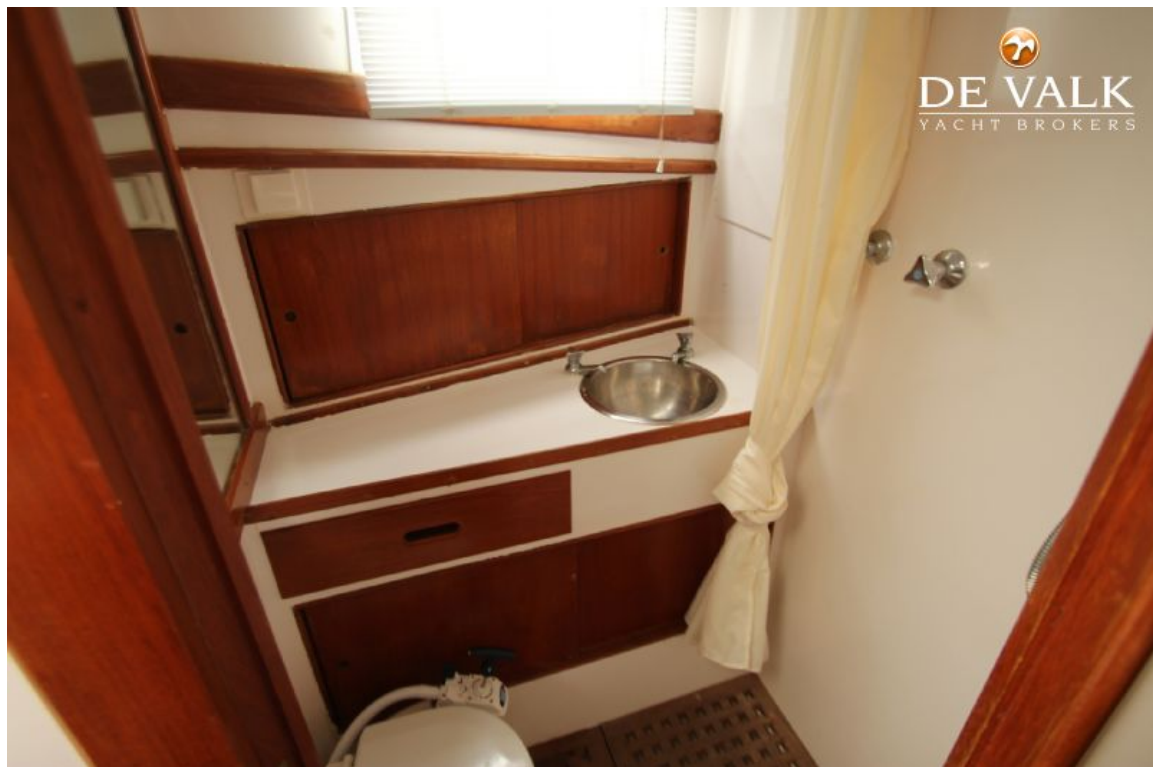
GRAND BANKS 42 CLASSIC



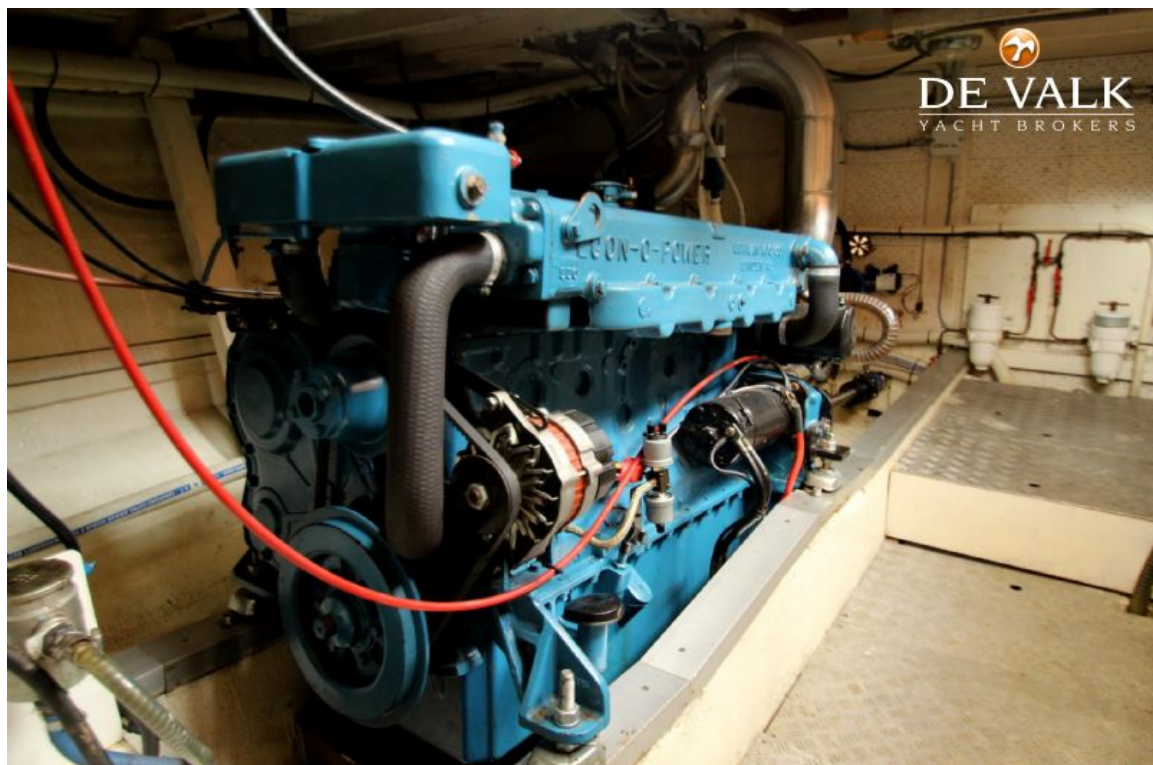
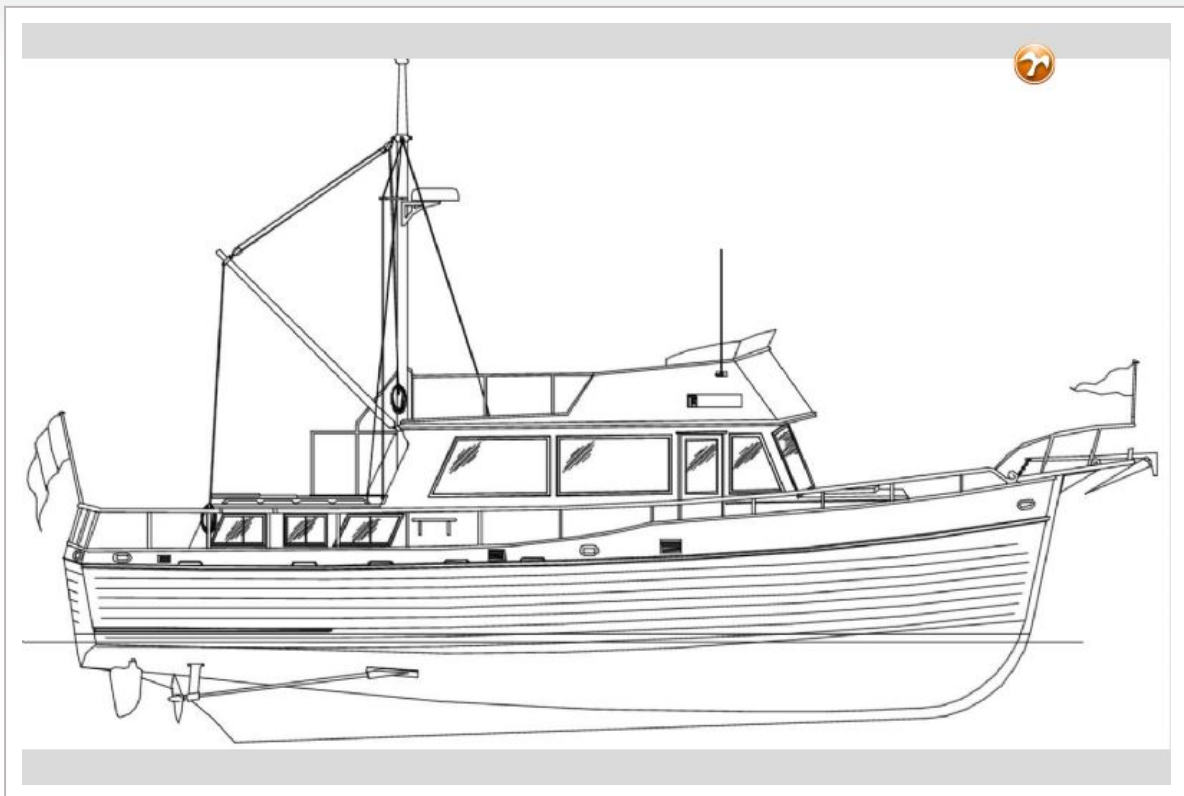
GRAND BANKS 42 CLASSIC



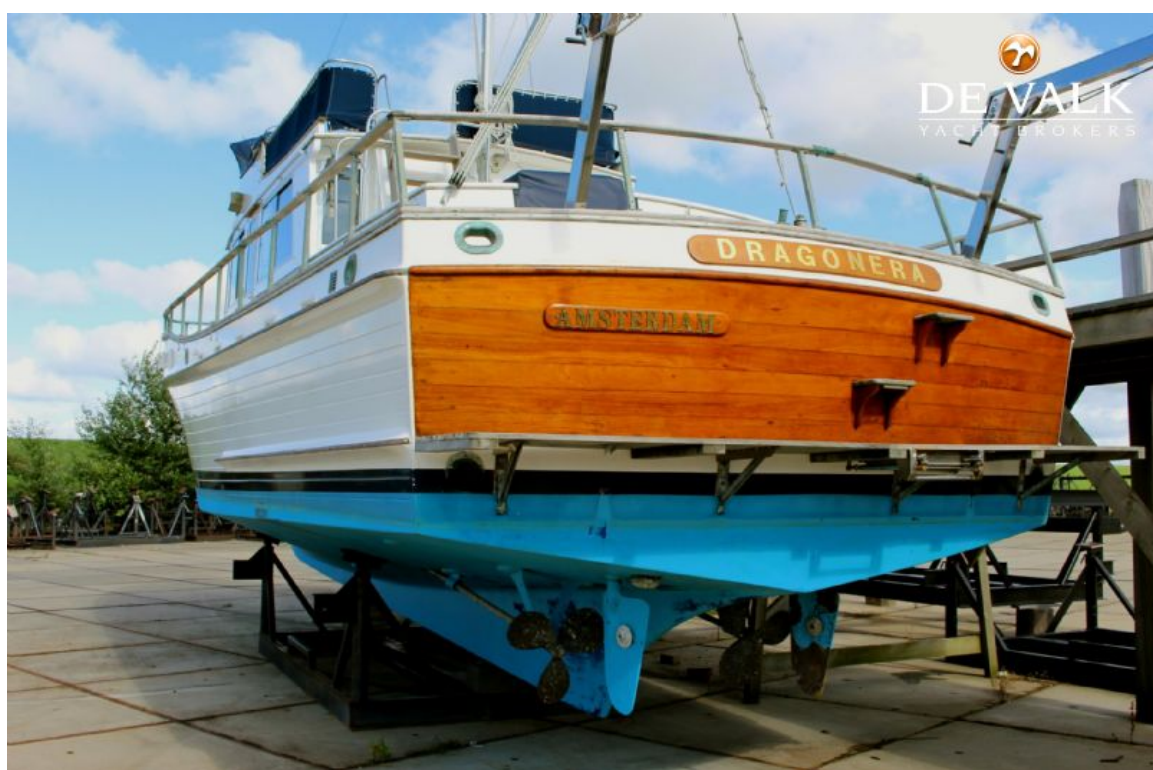
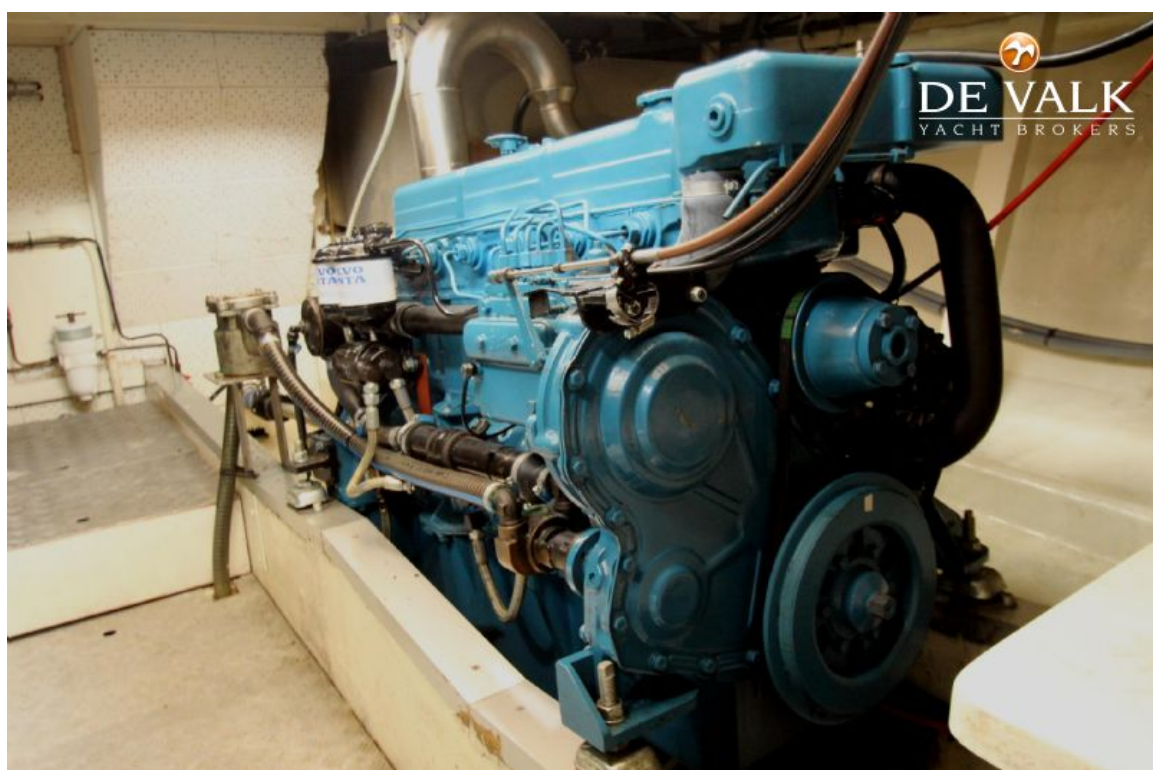
GRAND BANKS 42 CLASSIC



GRAND BANKS 42 CLASSIC



GRAND BANKS 42 CLASSIC



GRAND BANKS 42 CLASSIC

