



BAVARIA 37 CRUISER

BAVARIA 37 CRUISER

BROKER'S COMMENTS

This well kept Bavaria 37 Cruiser is a good handling sailing yacht with fractional rigging. Good stowage space below and on deck. The three cabin layout makes her perfect for fun family cruising. 'Per5mance' comes well equipped with a heating, a lot of instruments and a Volvo Penta 29HP diesel engine. The upholstery has been replaced in the salon for fine leather upholstery in 2011. She is being sold by her first owner.

Reinier van der Wolf

SPECIFICATIONS

Dimensions	11.35 x 3.80 x 1.95 (m)	Builder	Bavaria Yachtbau GmbH
Built	2005	Cabins	3
Material	GRP	Berths	8
Engine(s)	1 x Volvo Penta MD2030 diesel	Hp/Kw	29.00 (hp), 21.32 (kw)
Asking price	sold (VAT)	Lying	at sales office

CONTACT

Sales office	De Valk Monnickendam B.V.	Telephone	+31 (0)299 65 63 50
Address	Hoogedijk 6 1145 PM Katwoude NL	E-mail	monnickendam@devalk.nl

DISCLAIMER

These particulars are given in good faith as supplied but cannot be guaranteed.



BAVARIA 37 CRUISER

GENERAL

Model	BAVARIA 37 CRUISER
Type	sailing yacht
LOA (m)	11,35
LWL (m)	9,82
Beam (m)	3,80
Draft (m)	1,95
Air draft (m)	15,95
Headroom (m)	2,04
Year built	2005
Builder	Bavaria Yachtbau GmbH
Country	The Netherlands
Designer	J&J Design
Displacement (t)	7,2
Gross tonnage	6,8
Net tonnage	8,5
CE norm	A
Hull material	GRP
Hull colour	white
Hull shape	round-bilged
Keel type	fin keel Cast iron
Superstructure material	GRP
Rubbing strake	aluminum
Deck material	GRP
Deck finish	non-skid moulded in
Superstructure deck finish	non-skid moulded in
Cockpit deck finish	teak
Antifouling (year)	2016
Window frame	aluminium
Window material	tempered glass
Deckhatch	yes



BAVARIA 37 CRUISER

Portholes	aluminium
Insulation	foam plates
Fuel tank (litre)	150 L.
Level indicator (fuel tank)	yes
Freshwater tank (litre)	polyethylene 1x 210 + 1x 150 L.
Level indicator (freshwater)	yes
Blackwater tank (litre)	polyethylene 80 L.
Level indicator (blackwater)	light
Blackwater tank extraction	deck extraction
Wheel steering	rack & pinion
Emergency tiller	yes
More info on hull	Completely epoxy
More info on paintwork	Epifanes (2016)

ACCOMMODATION

Cabins	3
Berths	8
Interior	mahogany
Floor	wood
Open cockpit	yes
Saloon	Leather upholstery (2011)
Headroom saloon (m)	2,0 M.
Heating	diesel ducted hot air
Chart table	yes
Aft Cabin	2x
Convertible berth	yes
Galley	yes
Countertop	corian
Sink	stainless steel 2x
Cooker	calor gas
Oven	yes



BAVARIA 37 CRUISER

Fridge	yes
Freezer	in fridge
Hot water system	220V + engine
Water pressure system	electrical
Owners cabin	double bed Latex mattress with slatted
Bed length (m)	2,15 x 1,45 M.
Wardrobe	hanging/drawers/shelves
Bathroom	en suite
Toilet	en suite
Toilet system	manual
Wash basin	at the toilet
Shower	en suite
Guest cabin 1	double bed
Bed length (m)	2,08 x 1,35 M.
Wardrobe	hanging and shelves
Guest cabin 2	double bed
Bed length (m)	2,08 x 1,35 M.

MACHINERY

No of engines	1
Make	Volvo Penta
Type	MD2030
HP	29,00
kW	21,32
Fuel	diesel
Year installed	2005
Maximum speed (kn)	6,5
Cruising speed (kn)	6,0
Consumption (l/hr)	2,5
Range (nm)	300
Engine hours	649 (16-10-2016)



BAVARIA 37 CRUISER

Engine cooling system	freshwater heat exchanger
Drive	sail-drive
Saildrive seal	2012/2013
Engine controls	bowden cable
Gearbox	mechanical
Exhaust	watercooled
Propeller type	folding
Propeller blades	2
Propeller shaft material	Bronze
Manual bilge pump	yes
Electric bilge pump	yes
Electrical installation	12V
Batteries	yes
Start battery	55Ah gel
Service battery	120Ah gel
Battery charger	yes
Shorepower	with cable

NAVIGATION

Compass	Plastimo
Depth sounder	Raymarine
Log	Raymarine
Windset	Raymarine
Repeater	GPS
VHF handheld	ICOM
Autopilot	Raymarine
Rudder angle indicator	Raymarine
GPS	Simrad
Plotter	Simrad
Electronic chart(s)	C-map (2016)
AIS receiver	yes



BAVARIA 37 CRUISER

EQUIPMENT

Sprayhood	yes
Cockpit table	yes
Bathing platform	yes
Boarding ladder	stainless steel
Deck shower	yes
Anchor	Bruce
Anchor chain	15 M.
Other ground tackle	30 M.
Sea railing	wire S/s
Grab rail (superstructure)	stainless steel
Pushpit	yes
Pulpit	yes
Safety lines on deck	yes
Fenders	yes
Mooring lines	yes
Spare parts	yes
Tools	yes
TV	yes
Radio-cd player	Panasonic
Speakers in salon	yes
Clock - barometer	yes
Fire extinguisher	yes
Latest extinguisher survey	2005

RIGGING

Rigging	fractional
Standing rigging	wire
Brand mast	Seldén
Material mast	aluminium
Spreaders	2x



BAVARIA 37 CRUISER

Mainsail	loadpath R.Tasker (2014) Dacron full batten (2005)
Mainsail cover	blue
Battcars	2
Jib	Momentum
Genoa	Radial R.Tasker (2015)
Genoa I	Elvstrom (2005)
Genoa cover	blue
Gennaker	Hagoort
Reefing System	quick-one-line-reefing
Backstay adjuster	tackle 1:32
Boomvang	gasspring Selden
Primary sheet winch	Lewmar 40
Genoa sheetwinches	2x Lewmar 40
Halyard winches	2x Lewmar 30



BAVARIA 37 CRUISER



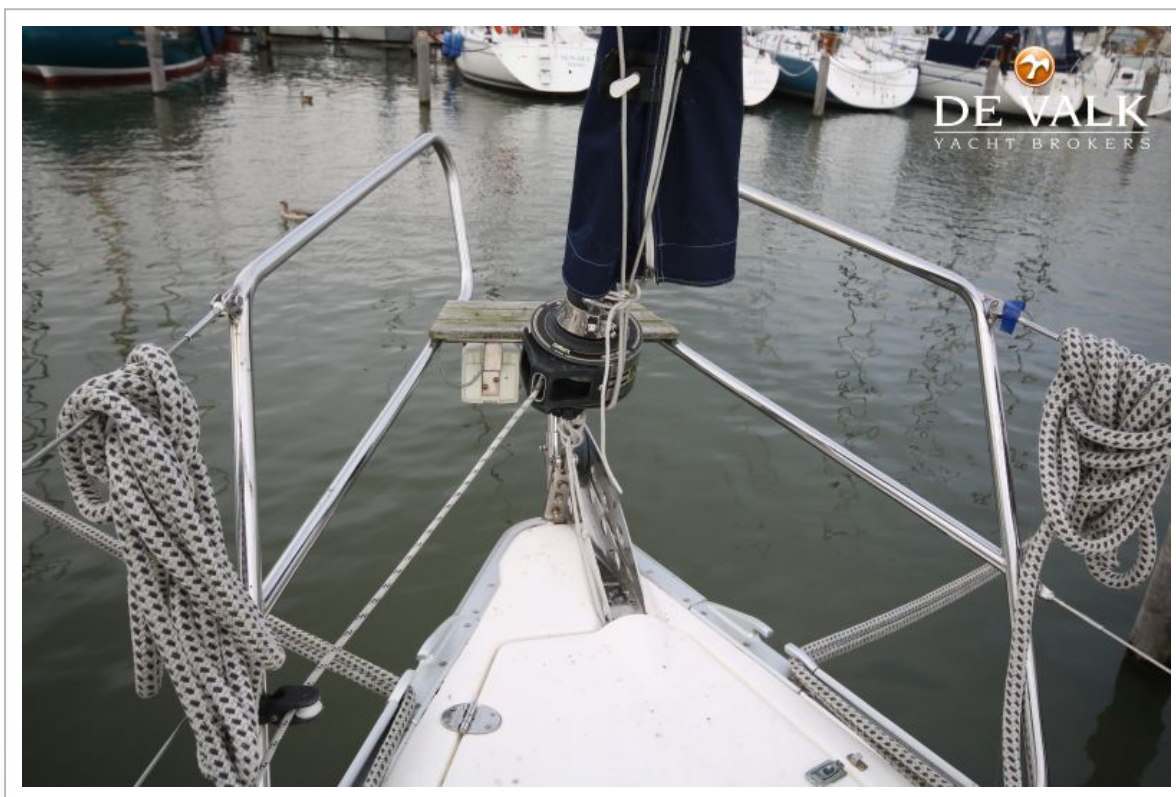
BAVARIA 37 CRUISER



BAVARIA 37 CRUISER



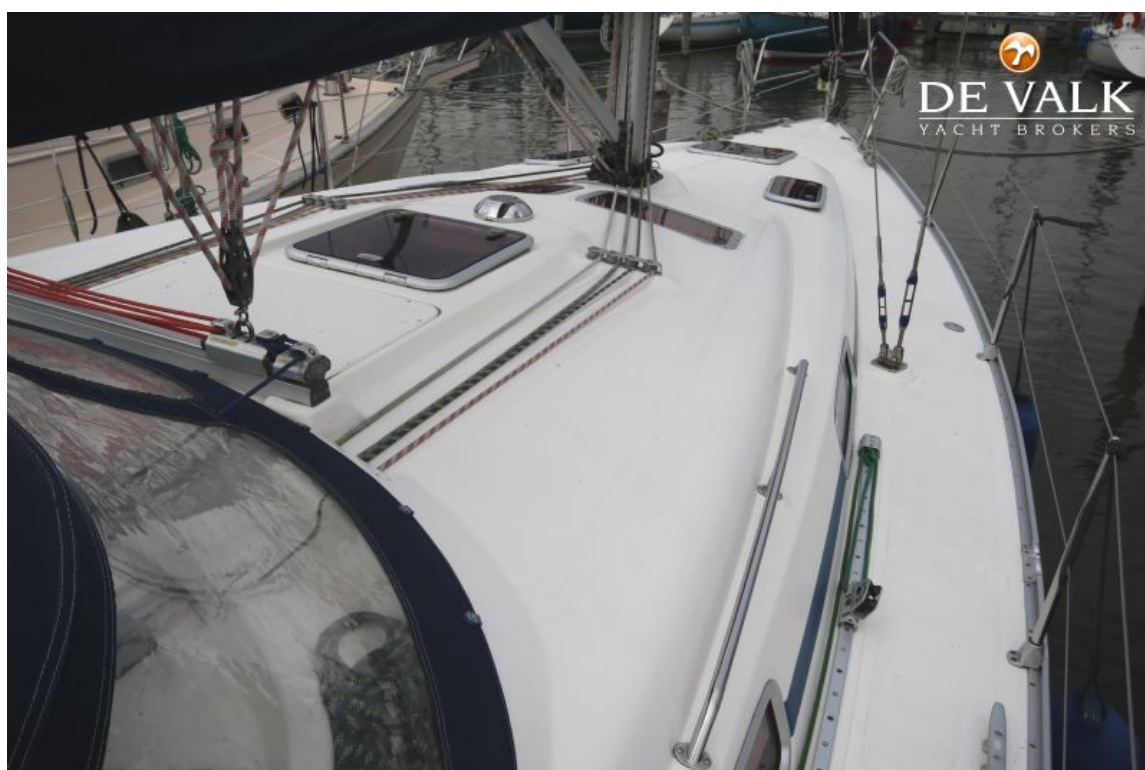
BAVARIA 37 CRUISER



BAVARIA 37 CRUISER



BAVARIA 37 CRUISER



BAVARIA 37 CRUISER



BAVARIA 37 CRUISER



BAVARIA 37 CRUISER



BAVARIA 37 CRUISER



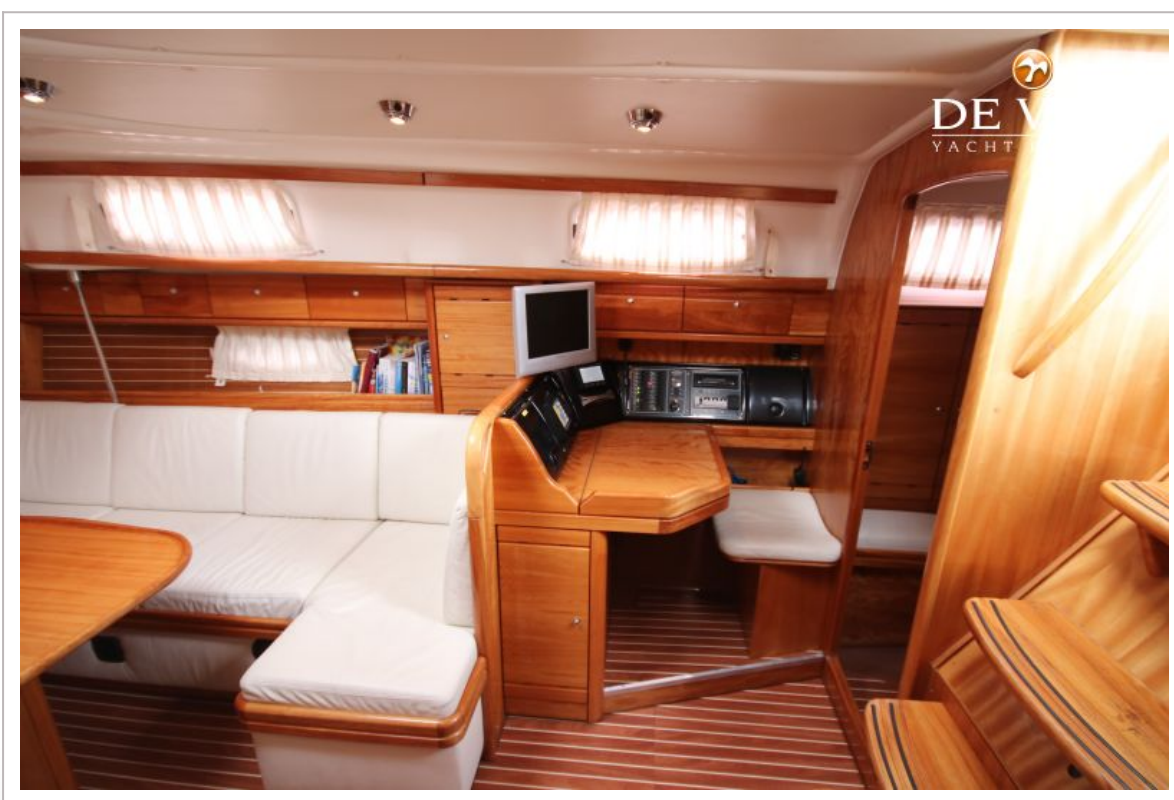
BAVARIA 37 CRUISER



BAVARIA 37 CRUISER



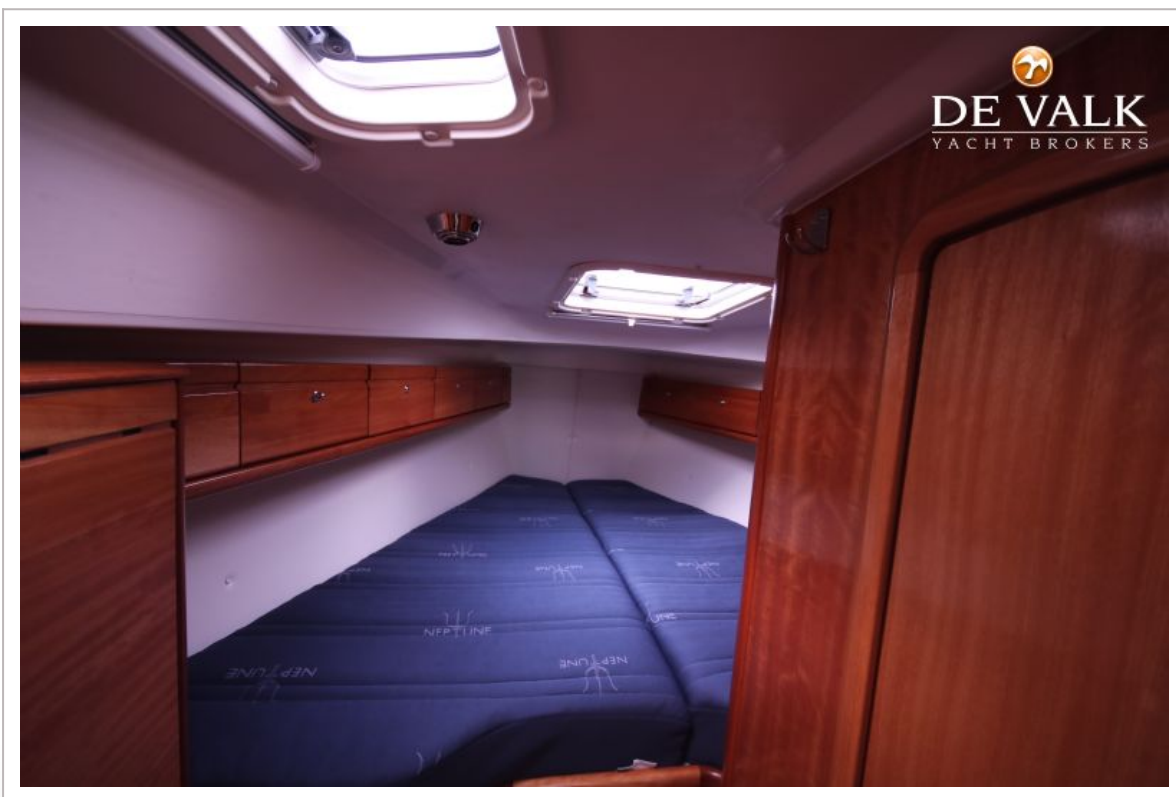
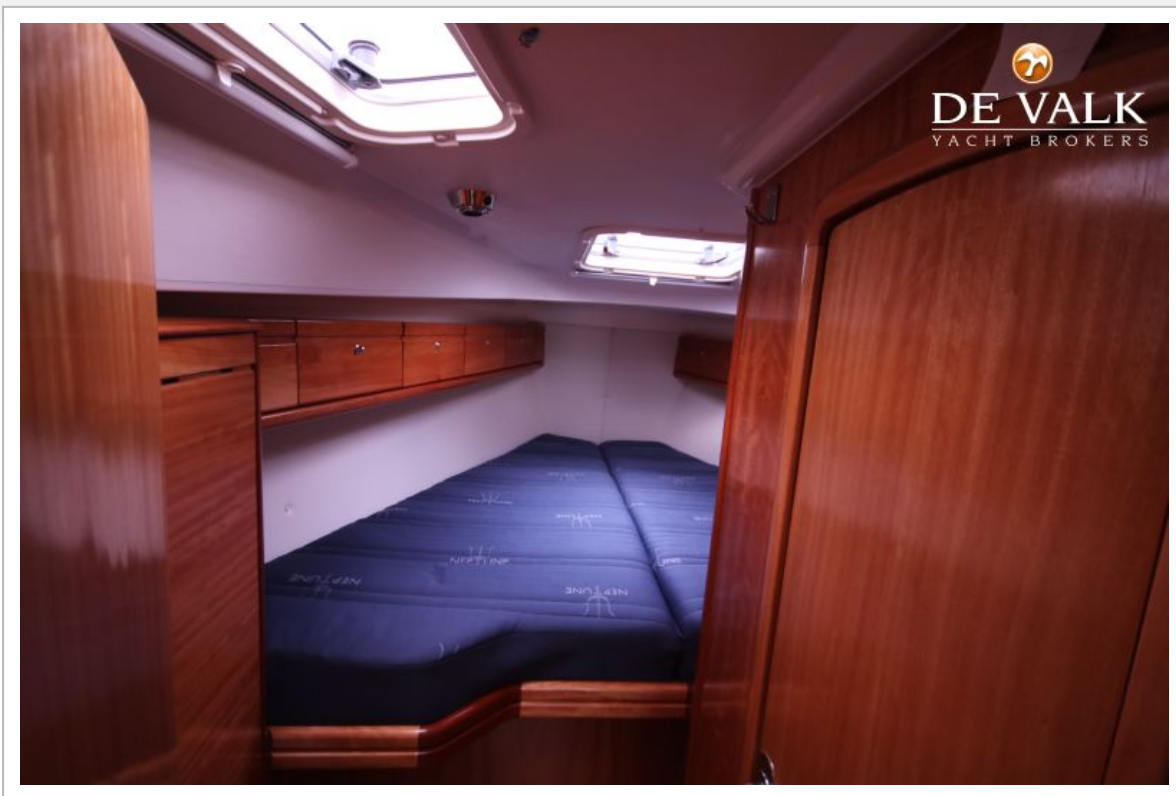
BAVARIA 37 CRUISER



BAVARIA 37 CRUISER



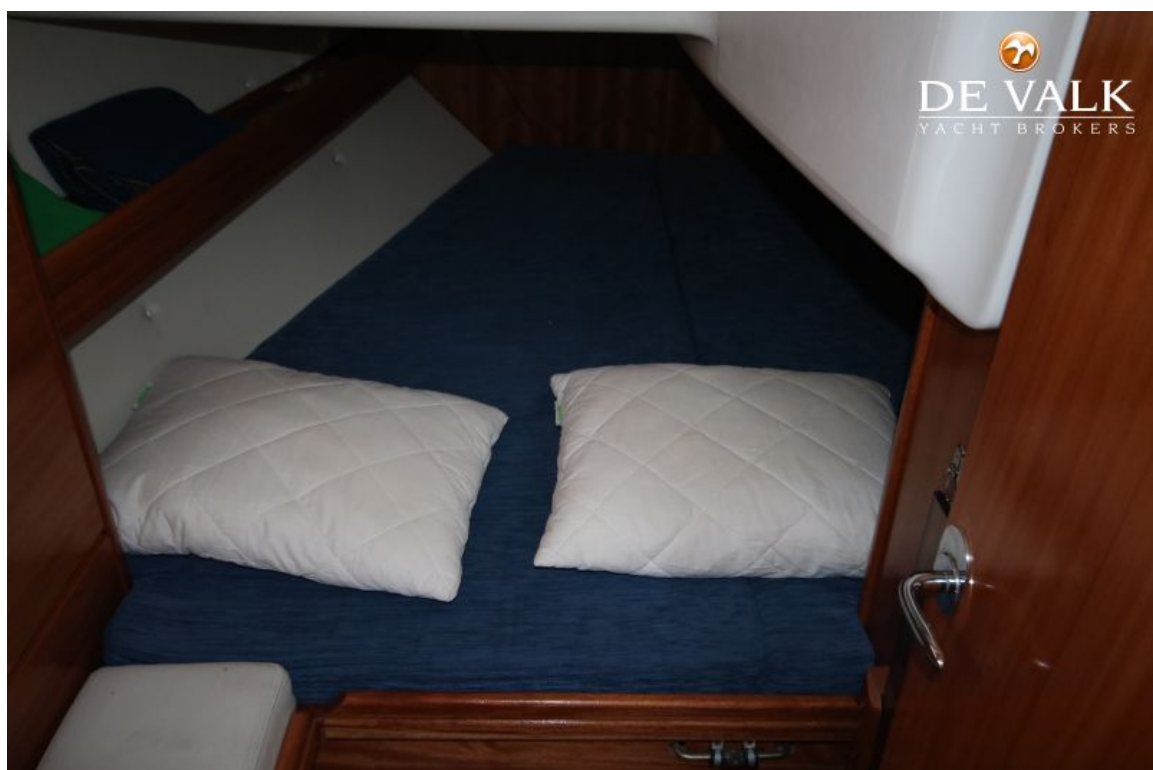
BAVARIA 37 CRUISER



BAVARIA 37 CRUISER



BAVARIA 37 CRUISER



BAVARIA 37 CRUISER



BAVARIA 37 CRUISER

