



DE VALK
YACHT BROKERS



NANTUCKET ISLAND 38



DE VALK
YACHT BROKERS

NANTUCKET ISLAND 38

BROKER'S COMMENTS

Nantucket Island 38, also known as Dolphin 38 is a very strong built sturdy yacht, "la Orana" has lots of renewals and ready for making a big trip and living on board. With most deck hardware, and nav aids renewed, engine little used, and her cozy and stylish interior, you can start new adventures.

Ger Bayens

SPECIFICATIONS

Dimensions	11.45 x 3.70 x 1.70 (m)	Builder	Ho Hsing FRP Co. Ltd.
Built	1980	Cabins	2
Material	GRP	Berths	6
Engine(s)	1 x Volvo Penta D2-40 A diesel	Hp/Kw	39.46 (hp), 29.00 (kw)
Asking price	sold (VAT)	Lying	at sales office

CONTACT

Sales office	De Valk Sint Annaland B.V.	Telephone	+31 (0)166 601 000
Address	Koelhuisweg 4 4697 RM Sint Annaland NL	E-mail	sintannaland@devalk.nl

DISCLAIMER

These particulars are given in good faith as supplied but cannot be guaranteed.



NANTUCKET ISLAND 38

GENERAL

Model	NANTUCKET ISLAND 38
Type	sailing yacht
LOA (m)	11,45
LWL (m)	9,80
Beam (m)	3,70
Draft (m)	1,70
Air draft (m)	17,20
Headroom (m)	1,85
Year built	1980
Builder	Ho Hsing FRP Co. Ltd.
Country	Taiwan
Designer	Peter Cole & Associates
Displacement (t)	9,6
Ballast (tonnes)	3,76
Hull material	GRP
Hull colour	off-white
Hull shape	round-bilged
Keel type	fin keel
Superstructure material	GRP
Deck material	GRP
Deck finish	synthetic teak Flexiteak
Superstructure deck finish	synthetic teak Flexiteak
Cockpit deck finish	synthetic teak Flexiteak
Dorades	yes
Window frame	aluminium
Window material	tempered glass
Deckhatch	yes
Portholes	aluminium
Fuel tank (litre)	polyethylene 180
Level indicator (fuel tank)	yes



NANTUCKET ISLAND 38

Freshwater tank (litre)	polyethylene 350 (90 / 100 / 160)
Blackwater tank (litre)	polyethylene 25
Blackwater tank extraction	deck extraction
Wheel steering	rack & pinion Lewmar
Emergency tiller	yes
Extra info	uwbody preventative epoxy coated

ACCOMMODATION

Cabins	2
Berths	6
Interior	teak
Floor	woodprint
Aft deck	yes
Saloon	yes
Headroom saloon (m)	1,85
Heating	central heating Webasto 90S
Chart table	yes
Aft Cabin	yes
Dinette	yes
Dinette to convert into berth	yes
Galley	yes
Countertop	plastic
Sink	stainless steel
Cooker	calor gas Force 10
Oven	Force 10
Gas alarm	yes
Fridge	Isotherm 12v
Hot water system	220V + engine
Water pressure system	electrical
Manual and/or foot pump	fresh + salt water
Owners cabin	double bed



Bed length (m)	2,10 x 1,60
Wardrobe	hanging/drawers/shelves
Bathroom	shared 1
Toilet	shared
Toilet system	manual
Wash basin	at the toilet
Shower	shared
Guest cabin 1	twin single
Bed length (m)	2,00 x 1,35
Wardrobe	hanging and shelves
Extra info	second bathroom now workspace

MACHINERY

No of engines	1
Make	Volvo Penta
Type	D2-40 A
HP	39,46
kW	29,00
Fuel	diesel
Year installed	2006
Maximum speed (kn)	7,2
Cruising speed (kn)	6,6
Consumption (l/hr)	3
Engine hours	500
Engine cooling system	freshwater heat exchanger
Drive	shaft
Engine controls	bowden cable
Gearbox	mechanical
Bowthruster	electric
Exhaust	watercooled
Propeller type	feathering



Propeller blades	3
Propeller shaft material	stainless steel
Shaft lubrication	water
Manual bilge pump	yes
Electric bilge pump	yes
Electrical installation	12/220v
Batteries	yes
Start battery	2 x
Service battery	3 x 305 Ah
Battery charger	12v/40amp
Inverter	800watt
Wind generator	D400
Solar panel	2 x 105 + 2 x 40
Diode battery combiners	yes
Shorepower	with cable
Watermaker	yes

NAVIGATION

Compass	2 x
Depth sounder	Navman Fish 4500
Log	Navman 4500 Tracker
Windset	Raymarine Wireless
VHF	Navman 7200
Autopilot	Navman 5600
Wind vane steering install.	yes
Plotter	GARMIN GPS Map 750
Radar/plotter	Raymarine C90W
Navtex	yes
Electronic chart(s)	yes
AIS receiver	yes



EQUIPMENT

Fixed windscreen	yes
Sprayhood with grab rail	yes
Sun awning	yes
Cockpit table	yes
Boarding ladder	stainless steel
Gangway	yes
Deck shower	yes
Anchor	Rocna
Anchor chain	40 mtr
Anchor 2	Fortress
Anchor chain	10 mtr chain + 30 mtr line
Windlass	electrical Lofrans
Deck wash	yes
Davits	stainless steel
Davits controls	manual
Sea railing	stainless steel
Pushpit	yes
Pulpit	yes
Life raft	container Plastimo Transocean (2011)
Life raft (pers)	4
Last life raft survey	(2011)
Danbuoy	yes
Safety lines on deck	yes
Radar reflector	Trilens
Fenders	yes
Mooring lines	yes
Spare parts	for engine
Radio-cd player	yes
Speakers in salon	2 x Bose
Clock - barometer	yes



Fire extinguisher	3 x
Latest extinguisher survey	2012

RIGGING

Rigging	cutter
Standing rigging	wire
Material mast	aluminium
Spreaders	1 x
Mainsail cover	yes
Battcars	yes
Fully battened mainsail	37m2 (2010)
Genoa II	with UV strip 43,5m2
Genoa furler	Plastimo
Gennaker	(2010)
Staysail	with shanks 18,6m2
Removable innerforestay	yes
Stormjib	yes
Reefing System	slabreefing
Boomvang	mechanical and tackle
Primary sheet winch	Lewmar 48ST (2007)
Secondary sheet winch	Lewmar 40ST (2007)
Halyard winches	Lewmar 30ST (2007)
Reefing winch	Lewmar 16ST
Spi-pole	1x alum. 1x carbon
Gennaker pole	aluminium
Isolated backstay	yes





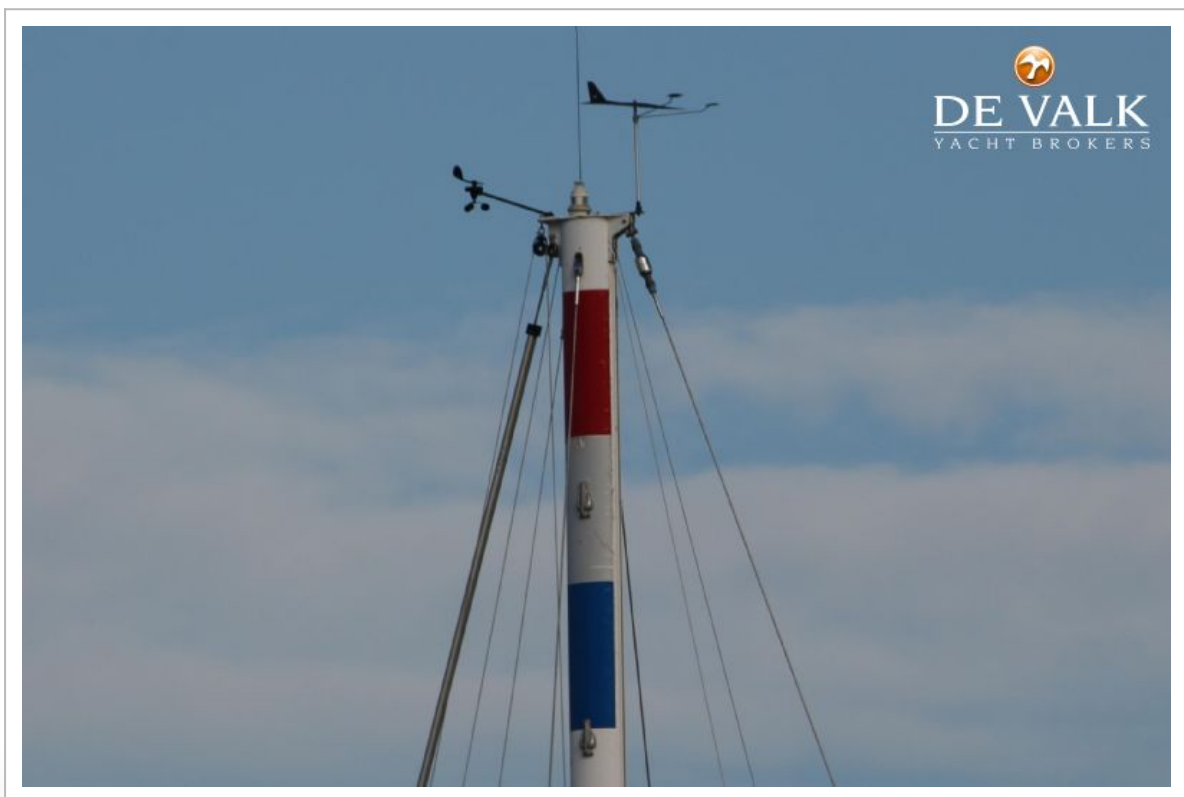


NANTUCKET ISLAND 38



NANTUCKET ISLAND 38









NANTUCKET ISLAND 38



NANTUCKET ISLAND 38



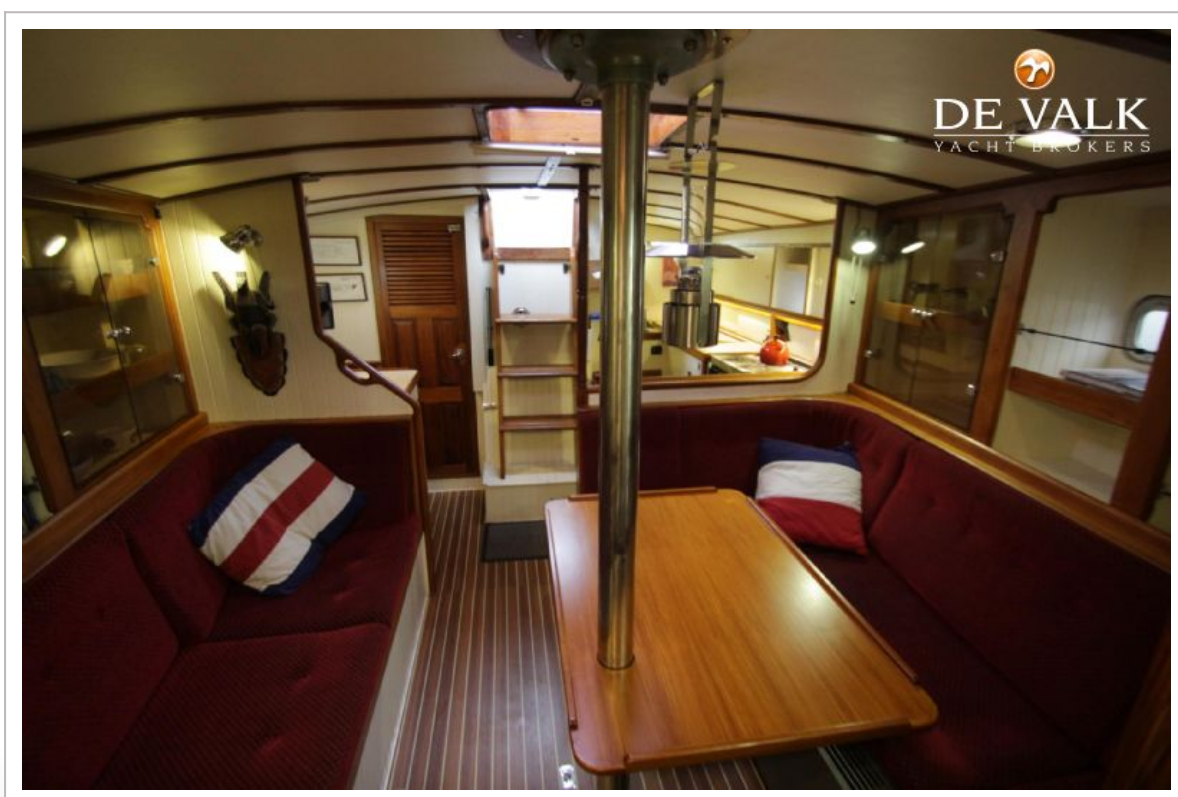
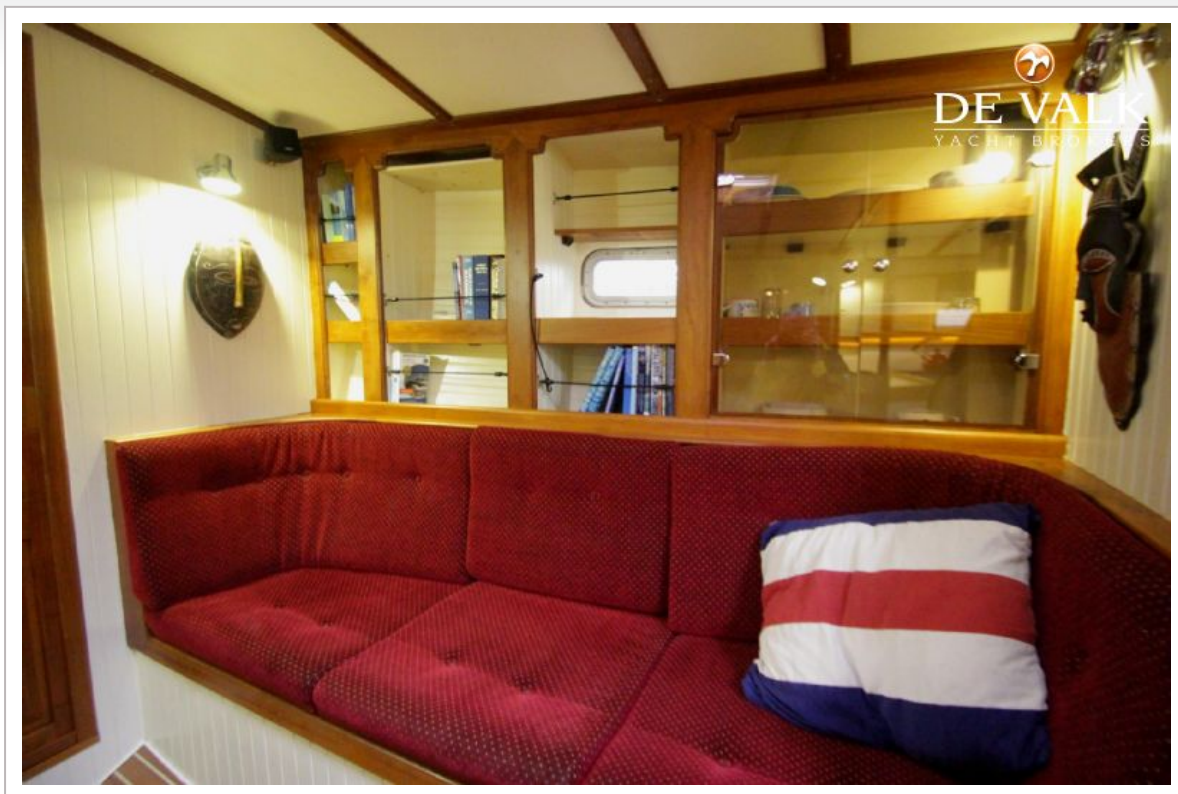
NANTUCKET ISLAND 38



NANTUCKET ISLAND 38



NANTUCKET ISLAND 38



NANTUCKET ISLAND 38



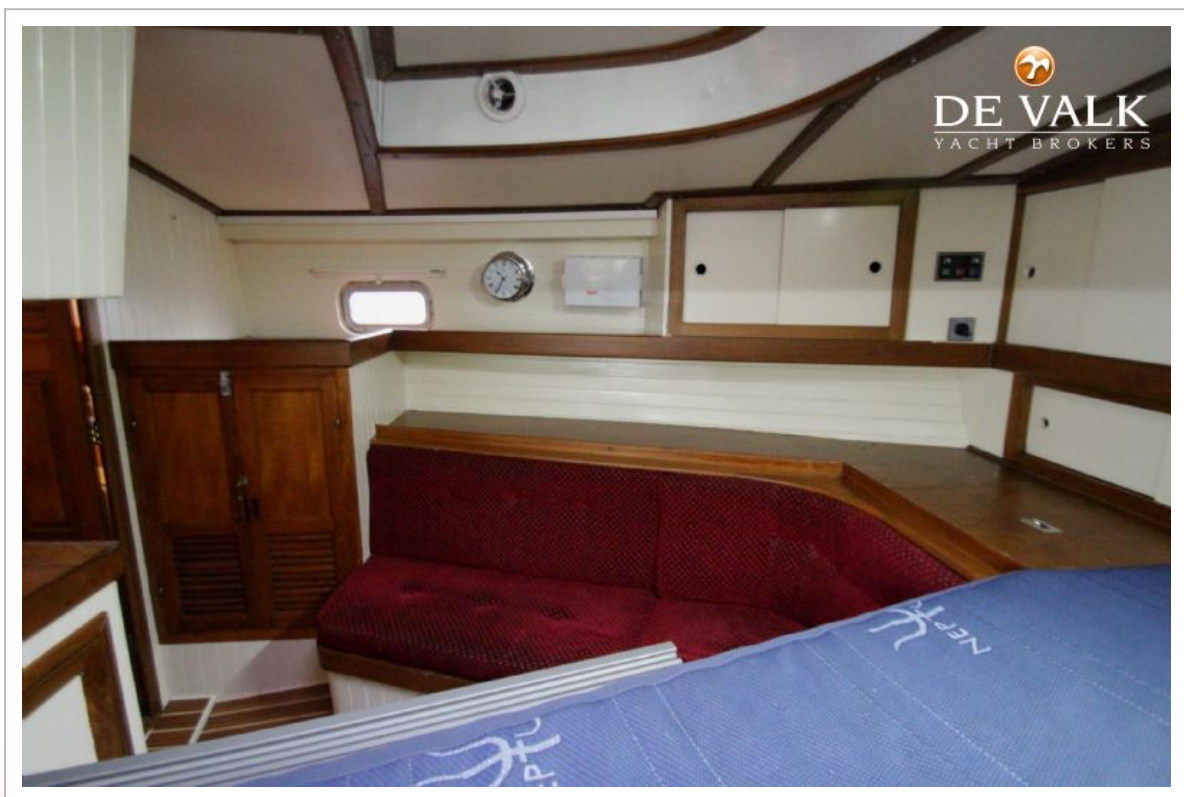
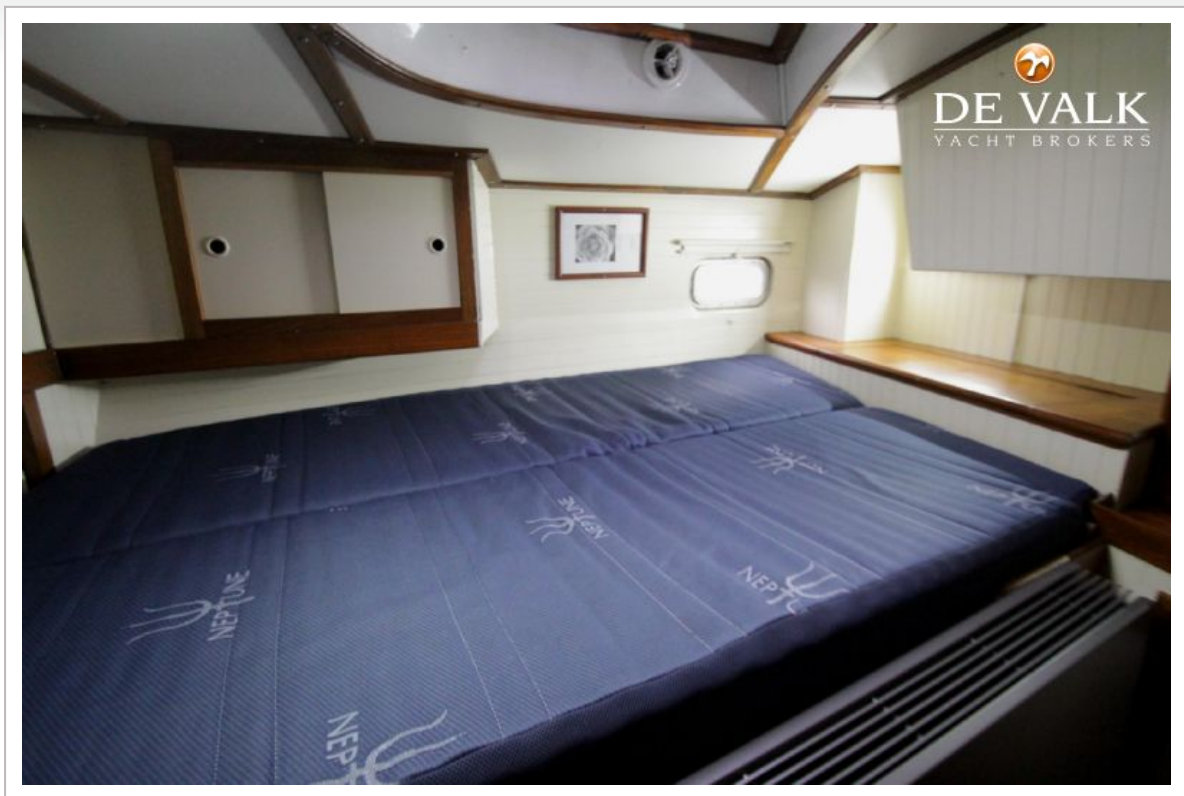
NANTUCKET ISLAND 38



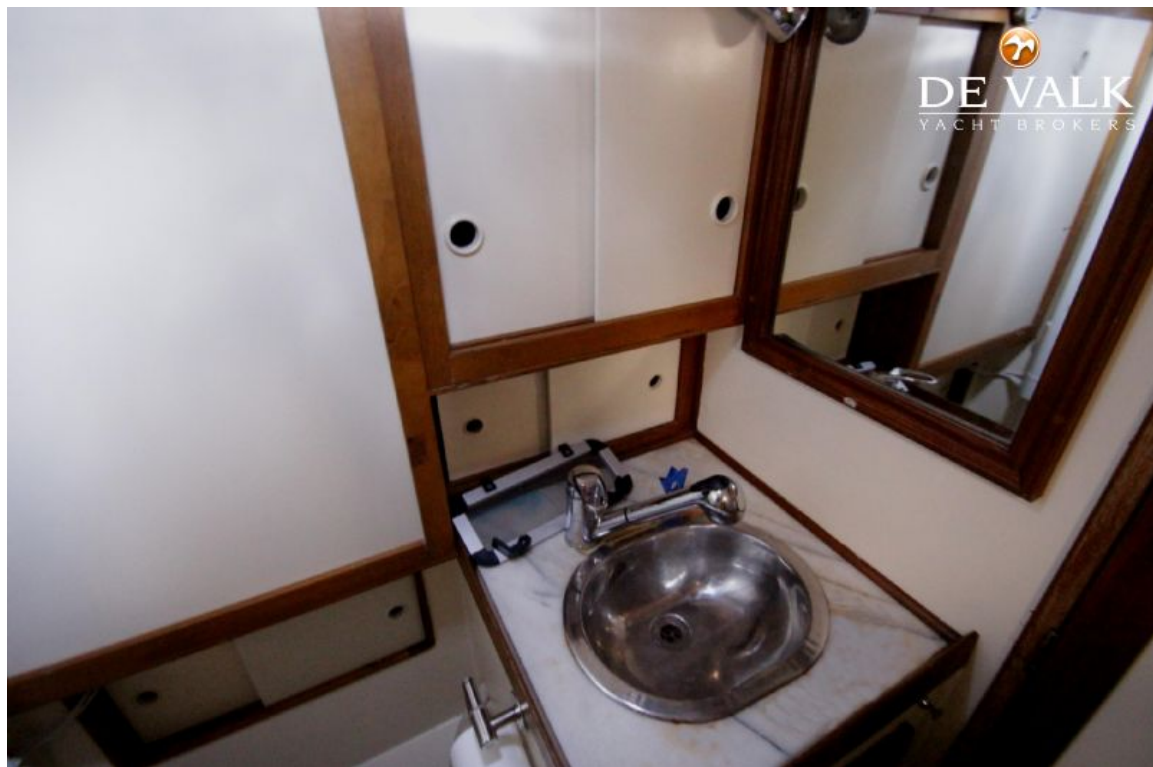
NANTUCKET ISLAND 38



NANTUCKET ISLAND 38

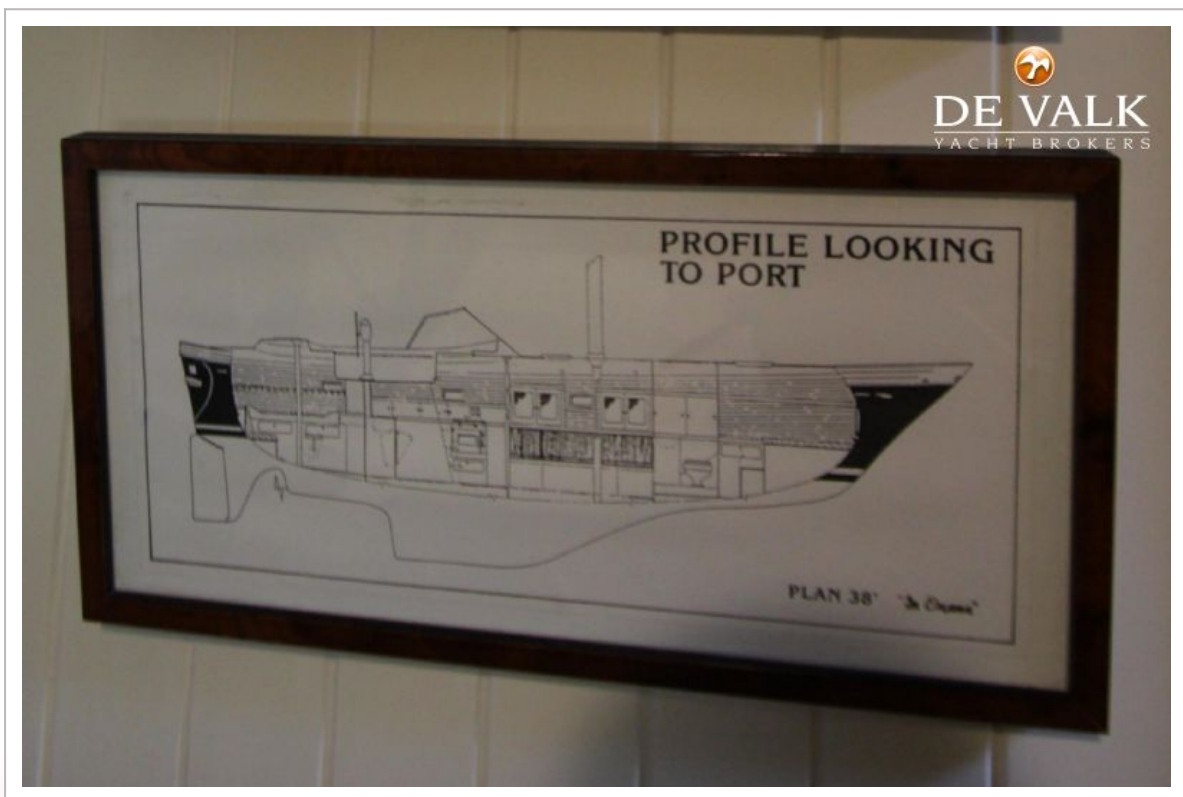
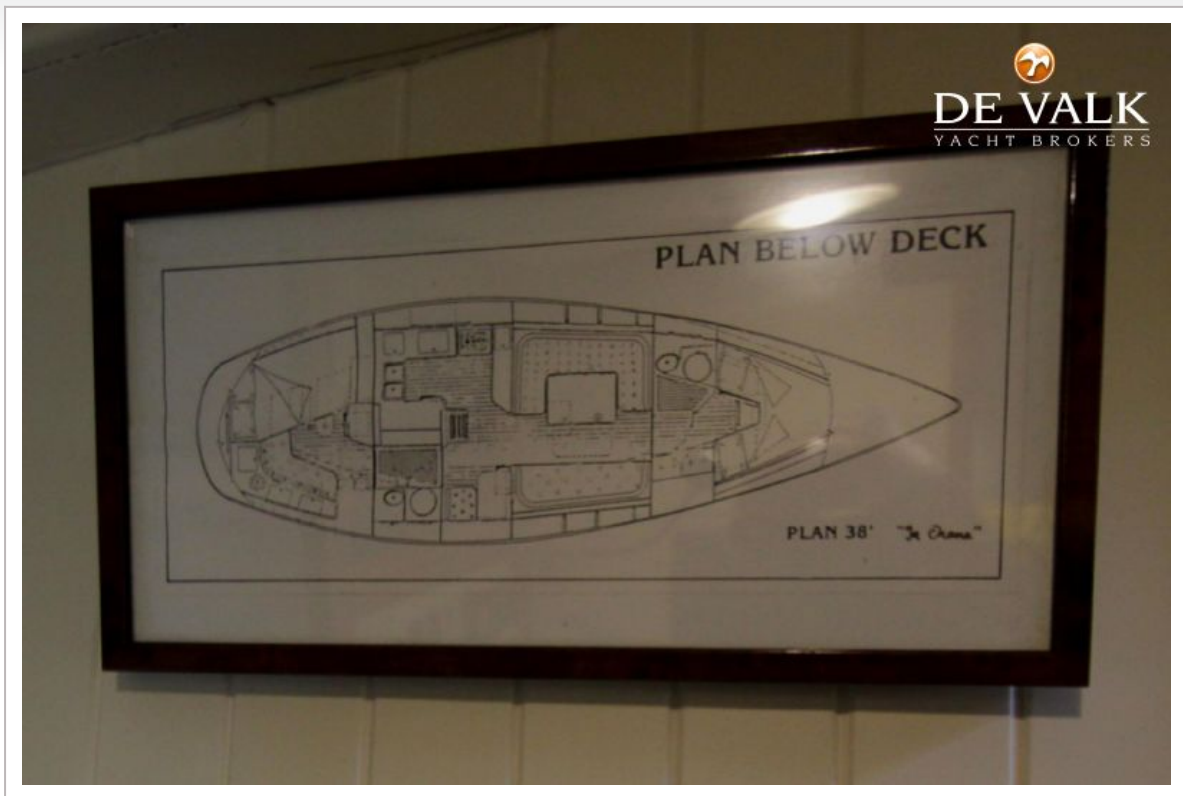


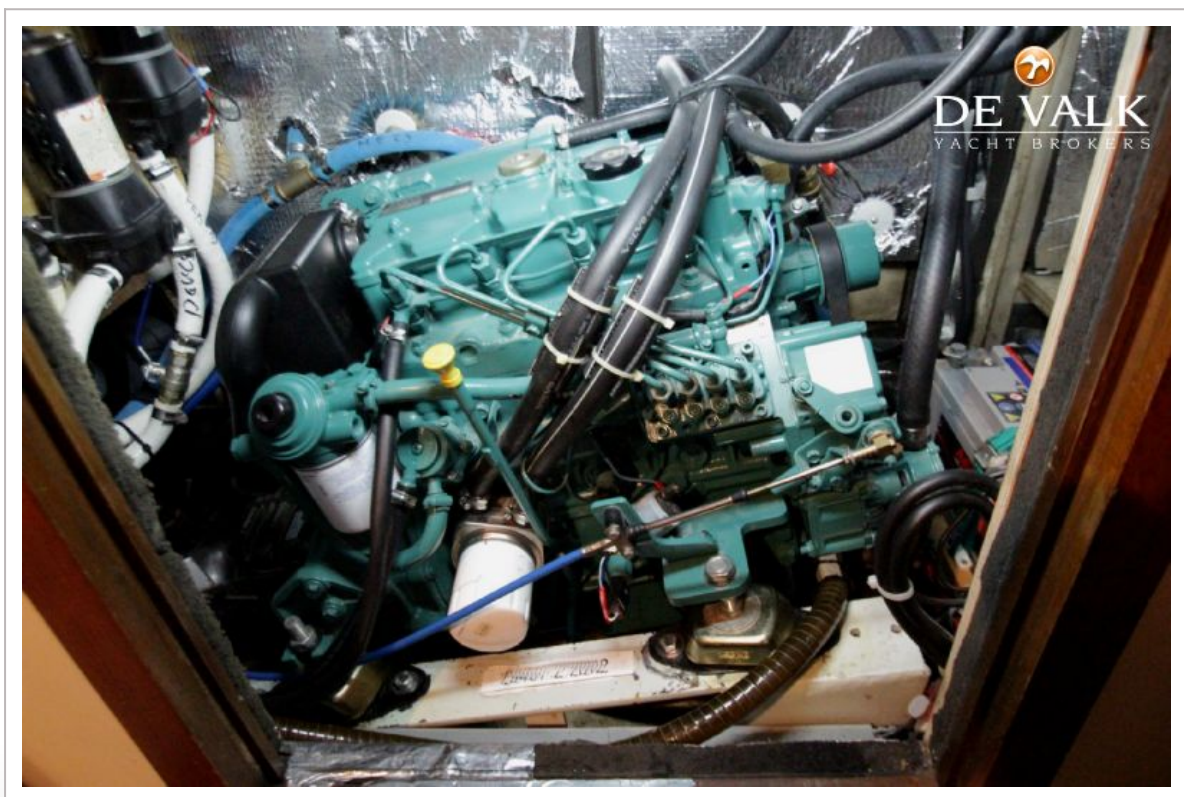
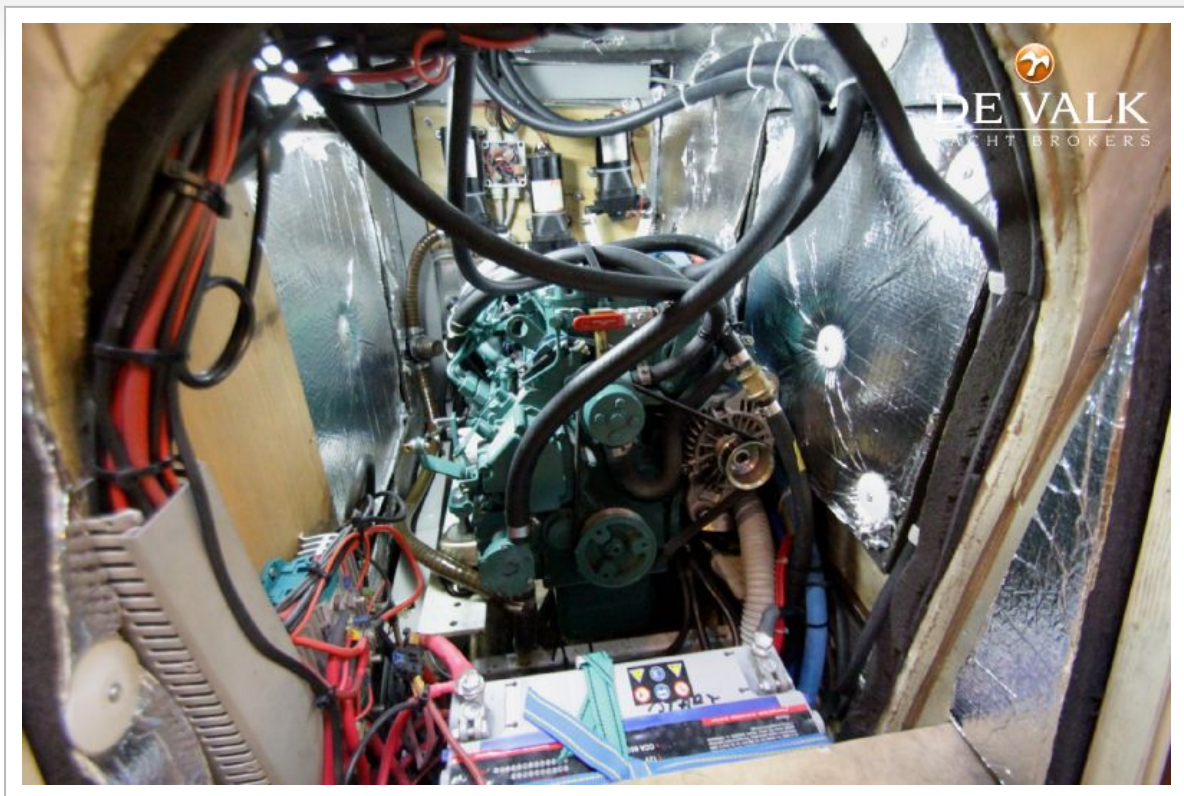
NANTUCKET ISLAND 38



NANTUCKET ISLAND 38







NANTUCKET ISLAND 38

