



DE VALK  
YACHT BROKERS



## TASWELL 49 AS DECK SALON



DE VALK  
YACHT BROKERS

# TASWELL 49 AS DECK SALON

## BROKER'S COMMENTS

The Taswell 49 was built in two versions. This is the All Season version with the full deck saloon. Where many yacht claim to be a deck saloon yacht, they are often not. Fitting just bigger windows does not make a deck saloon. Ta Shing has been building boats since the late 1970s and is considered to be one of the higher-quality boat builders in the world. The Taswell is also both fast and seaworthy. Taswells are fantastic offshore boats and can be found cruising all over the world.

*Marc Weijenberg*

## SPECIFICATIONS

<b>Dimensions</b>	14.88 x 4.57 x 1.78 (m)	<b>Builder</b>	Ta Shing
<b>Built</b>	1991	<b>Cabins</b>	3
<b>Material</b>	GRP	<b>Berths</b>	7
<b>Engine(s)</b>	1 x Yanmar 4LH-TE diesel	<b>Hp/Kw</b>	110.00 (hp), 80.85 (kw)
<b>Asking price</b>	sold (VAT )	<b>Lying</b>	elsewhere / Not at sales office

## CONTACT

<b>Sales office</b>	De Valk Sint Annaland B.V.	<b>Telephone</b>	+31 (0)166 601 000
<b>Address</b>	Koelhuisweg 4 4697 RM Sint Annaland NL	<b>E-mail</b>	sintannaland@devalk.nl

## DISCLAIMER

These particulars are given in good faith as supplied but cannot be guaranteed.



# TASWELL 49 AS DECK SALON

## GENERAL

Model	TASWELL 49 AS DECK SALON
Type	sailing yacht
LOA (m)	14,88
Beam (m)	4,57
Draft (m)	1,78
Air draft (m)	21,50
Headroom (m)	2,00
Year built	1991
Builder	Ta Shing
Country	Taiwan
Designer	Bill Dixon
Displacement (t)	14,5
Ballast (tonnes)	lead 5,9
Hull material	GRP
Hull colour	blue
Hull shape	round-bilged
Keel type	bulb keel Scheel design
Superstructure material	GRP
Rubbing strake	wood
Deck material	GRP
Deck finish	teak
Superstructure deck finish	anti-slip moulded in
Cockpit deck finish	teak
Dorades	2 x
Window frame	stainless steel
Deckhatch	yes
Portholes	stainless steel
Fuel tank (litre)	steel 2 x 500
Freshwater tank (litre)	stainless steel 2 x 400
Blackwater tank (litre)	stainless steel 1 x 100



# TASWELL 49 AS DECK SALON

<b>Blackwater tank extraction</b>	deck extraction + pump
<b>Wheel steering</b>	cable steering Edson
<b>Inside helm position</b>	via Autohelm joystick
<b>Emergency tiller</b>	yes
<b>More info on paintwork</b>	painted 2013 2 pack paint
<b>Extra info</b>	Black watertank connected to front pump toilet Stainless steel rudderstock Teak decks refurbished 2013-2015

## ACCOMMODATION

<b>Cabins</b>	3
<b>Berths</b>	7
<b>Interior</b>	teak
<b>Floor</b>	teak and holly
<b>Pilot house/deck saloon</b>	with U shaped dinette
<b>Headroom saloon (m)</b>	2,00
<b>Heating</b>	central heating Webasto (2015)
<b>Chart table</b>	yes
<b>Dinette</b>	small dinette below
<b>Galley</b>	yes
<b>Countertop</b>	plastic
<b>Sink</b>	stainless steel 2 x
<b>Cooker</b>	Froce 10
<b>Oven</b>	Froce 10
<b>Microwave</b>	Samsung
<b>Fridge</b>	2 x Grunert
<b>Hot water system</b>	220V + engine
<b>Water pressure system</b>	electrical
<b>Manual and/or foot pump</b>	2 x footpump
<b>Owners cabin</b>	double bed Aft / achter / hinten
<b>Bed length (m)</b>	2,00 x 1,60
<b>Wardrobe</b>	hanging/drawers/shelves



# TASWELL 49 AS DECK SALON

Bathroom	en suite I
Toilet	en suite
Toilet system	manual
Wash basin	in the bathroom
Shower	en suite
Guest cabin 1	double bed Forward / voor / vorne
Bed length (m)	2,00 x 1,60
Wardrobe	drawers
Bathroom	shared II
Toilet	shared
Toilet system	manual
Wash basin	in the bathroom
Shower	shared
Guest cabin 2	bunk bed Forward / voor / vorne
Bed length (m)	2,00 x 0,65
Wardrobe	hanging and drawers
Extra info	Heating system not yet nstalled Vinyl liner (upper and wall) is loose in some areas Abudance of stowage space throughout

## MACHINERY

No of engines	1
Make	Yanmar
Type	4LH-TE
HP	110,00
kW	80,85
Fuel	diesel
Year installed	1991
Maximum speed (kn)	8
Cruising speed (kn)	7
Consumption (l/hr)	5
Engine hours	1650



# TASWELL 49 AS DECK SALON

Engine cooling system	freshwater heat exchanger
Drive	shaft
Engine controls	bowden cable
Gearbox	hydraulic
Bowthruster	electric Rheinstrohm 24v
Exhaust	watercooled
Propeller type	feathering Gori
Propeller blades	3
Propeller shaft material	stainless steel
Shaft lubrication	water
Manual bilge pump	yes
Electric bilge pump	yes
Electrical installation	12/24/220v
Generator	wet exhaust EMI MDS-103 6kW
Start battery	4 x 6v
Service battery	4 x 120amp (2011)
Battery charger	2 x Newmar
Shorepower	with cable
Extra info	gearbox overhaul 2015

## NAVIGATION

Compass	Sestrel Major
Electric compass	via autopilot
Depth sounder	VDO Logic
Log	VDO Logic
Windset	VDO Logic (defect)
Repeater	VDO Logic
VHF	Sailor RT2048
Autopilot	with Joystick inside Autohelm ST7000
Rudder angle indicator	via autopilot
Radar	Raytheon R20XX



Plotter	in cockpit Raymarine RC435i
Electronis chart(s)	1 x

## EQUIPMENT

Sprayhood	yes
Sun awning	yes
Winter cover	yes
Cockpit table	yes
Bathing platform	yes
Boarding ladder	stainless steel
Deck shower	hot + cold
Anchor	CQR Plough
Windlass	electrical Maxwell
Capstan	Maxwell
Sea railing	stainless steel
Grab rail (superstructure)	stainless steel
Railing side opening gates	yes
Pushpit	yes
Pulpit	yes
Radar reflector	yes
Fenders	yes
Mooring lines	yes
Radio-cd player	yes

## RIGGING

Rigging	sloop-cutter
Standing rigging	wire
Brand mast	Seldén
Material mast	aluminium
Spreaders	2 x
Keel stepped mast	yes



# TASWELL 49 AS DECK SALON

<b>Mainsail</b>	furling main 45m2 Wittevrongel (2001)
<b>Stoway mast</b>	yes
<b>Genoa</b>	furling 54m2 Wittevrongel (2001)
<b>Genoa furler</b>	Furlex
<b>Cutter furler</b>	Furlex
<b>Booster</b>	with squeezer (1993)
<b>Staysail</b>	furling 21m2 Wittevrongel (2001)
<b>Reefing System</b>	main in-mast furling
<b>Boomvang</b>	mechanical Seldén Rodkicker
<b>Genoa sheetwinches</b>	2 x Lewmar 56CST
<b>Halyard winches</b>	2 x Lewmar 43CST
<b>Reefing winch</b>	1 x Lewmar 40CST
<b>Spi-pole</b>	yes
<b>Extra info</b>	Sails have not been used much.



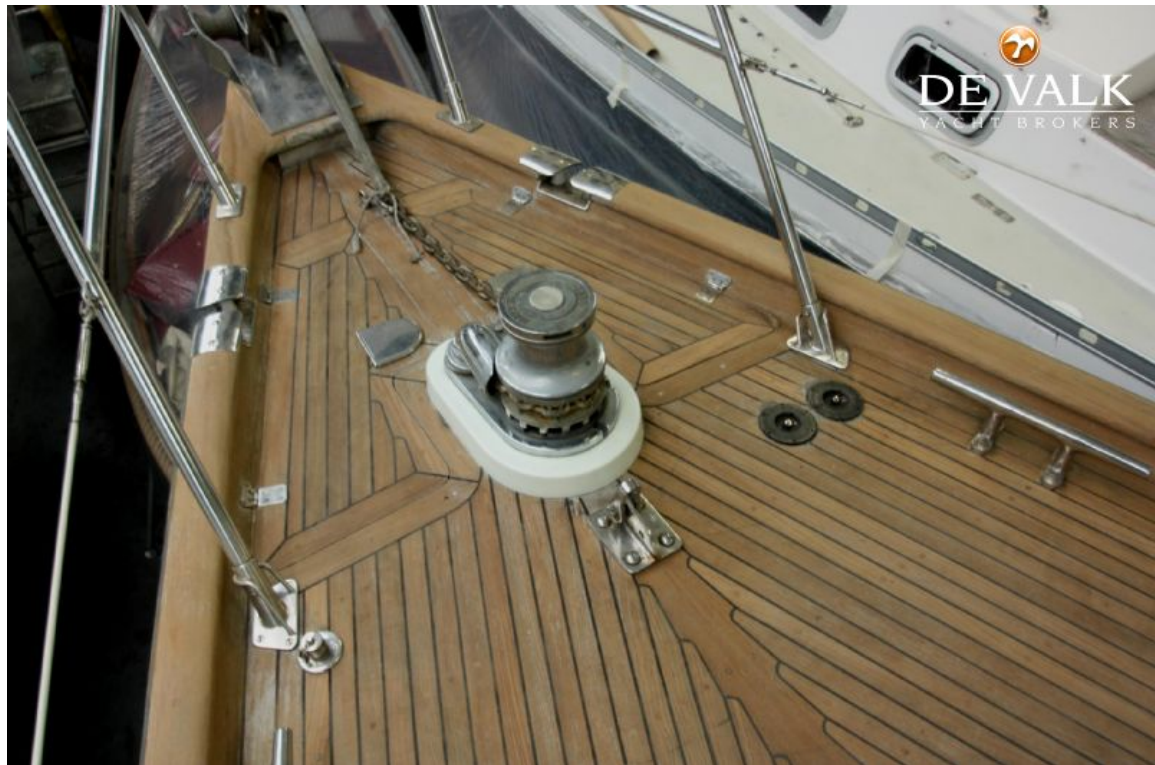
# TASWELL 49 AS DECK SALON



# TASWELL 49 AS DECK SALON



## TASWELL 49 AS DECK SALON



## TASWELL 49 AS DECK SALON



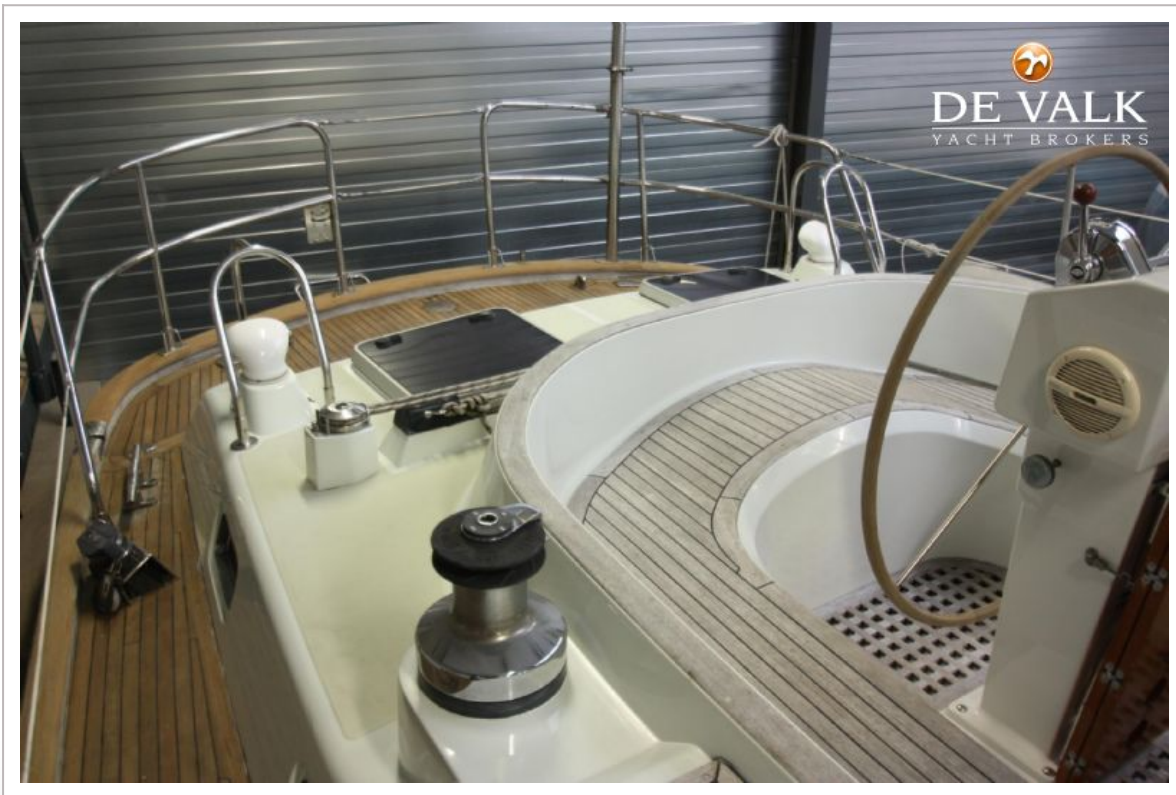
## TASWELL 49 AS DECK SALON



## TASWELL 49 AS DECK SALON



## TASWELL 49 AS DECK SALON



## TASWELL 49 AS DECK SALON



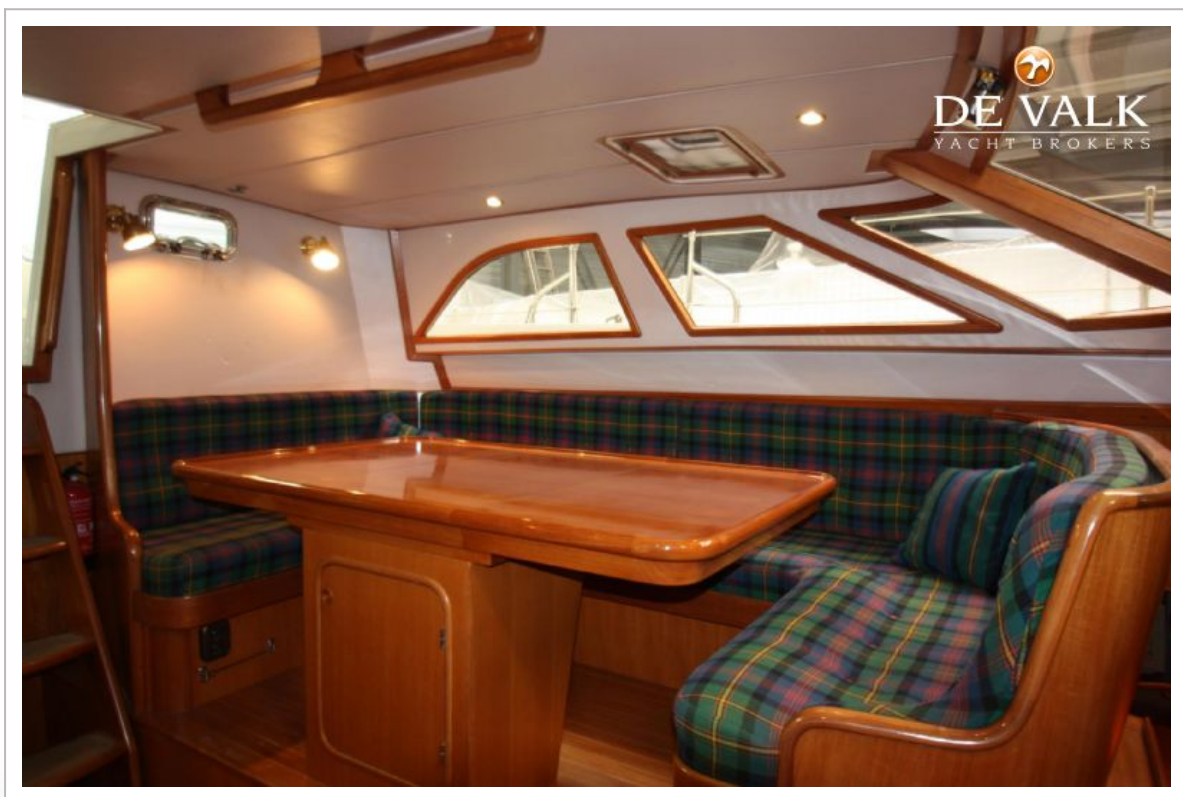
## TASWELL 49 AS DECK SALON



## TASWELL 49 AS DECK SALON



## TASWELL 49 AS DECK SALON



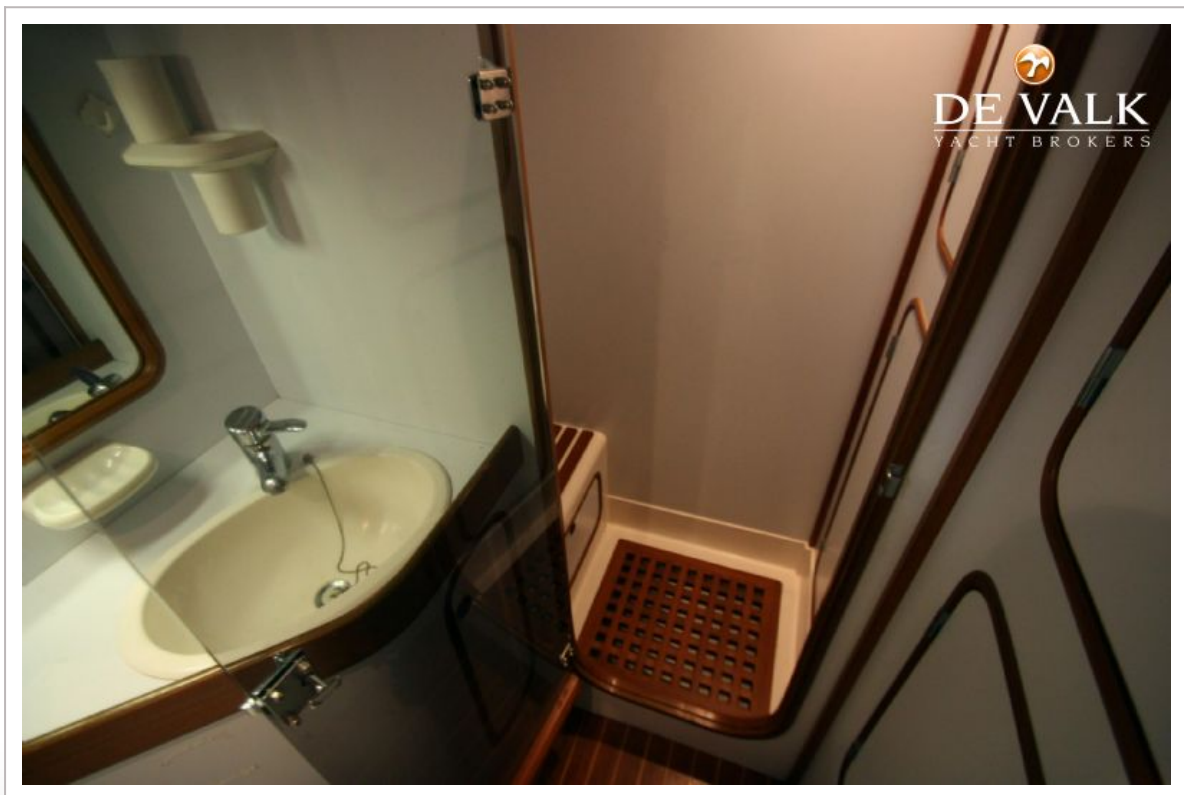
## TASWELL 49 AS DECK SALON



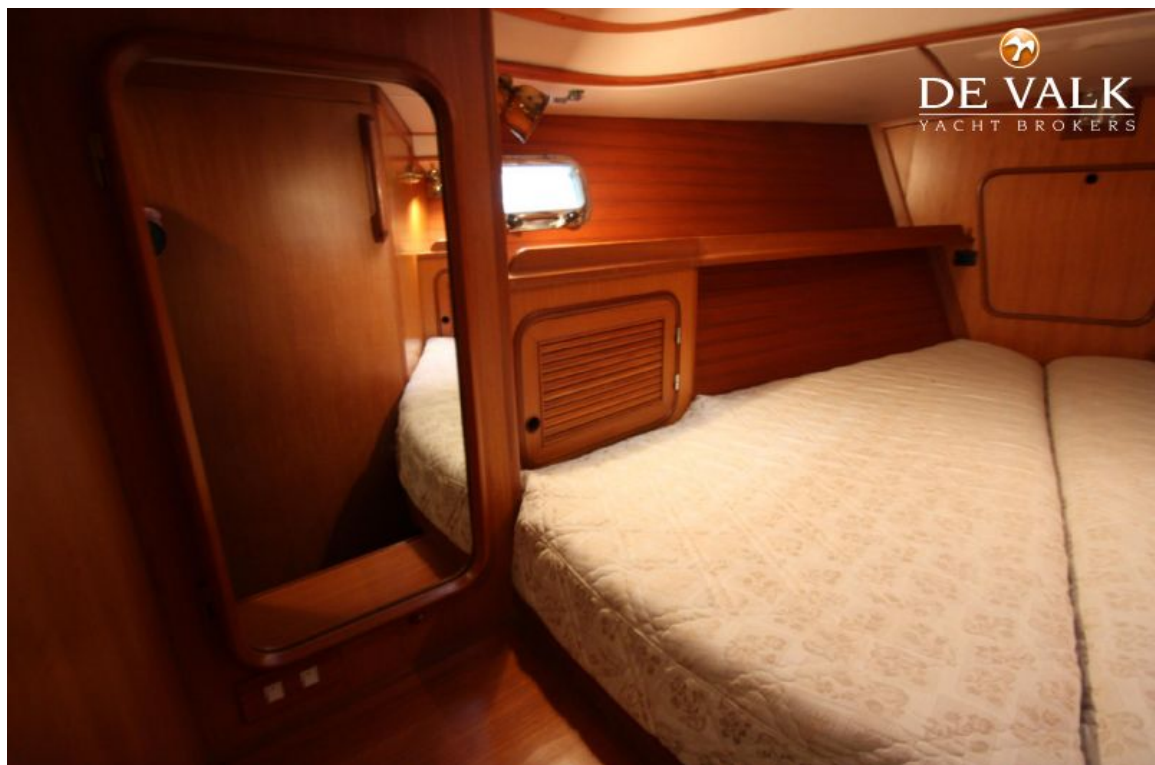
## TASWELL 49 AS DECK SALON



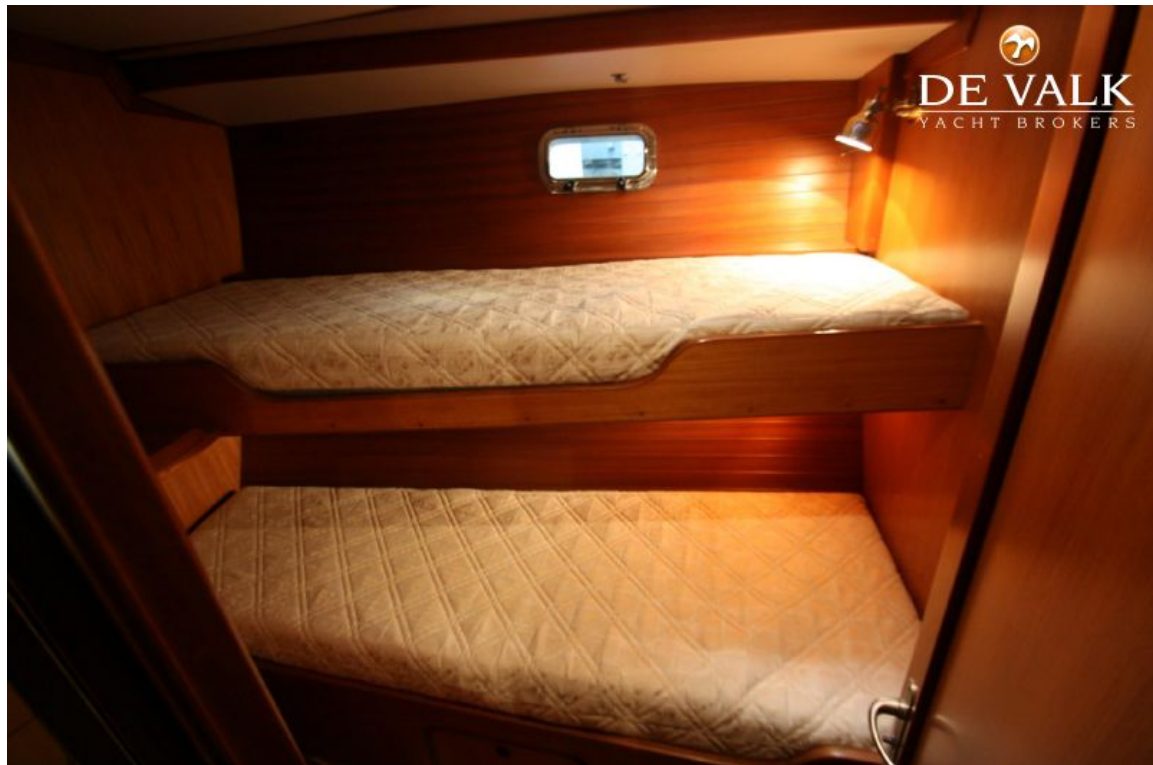
## TASWELL 49 AS DECK SALON



## TASWELL 49 AS DECK SALON



## TASWELL 49 AS DECK SALON



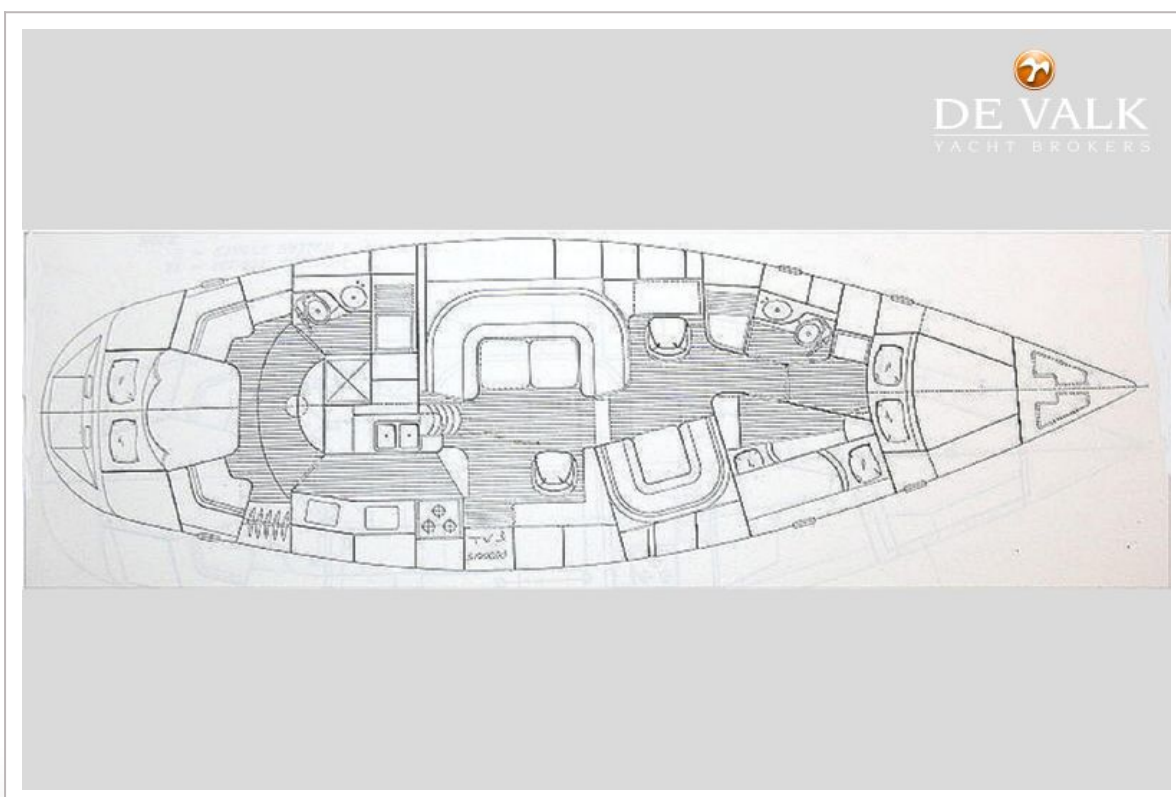
## TASWELL 49 AS DECK SALON



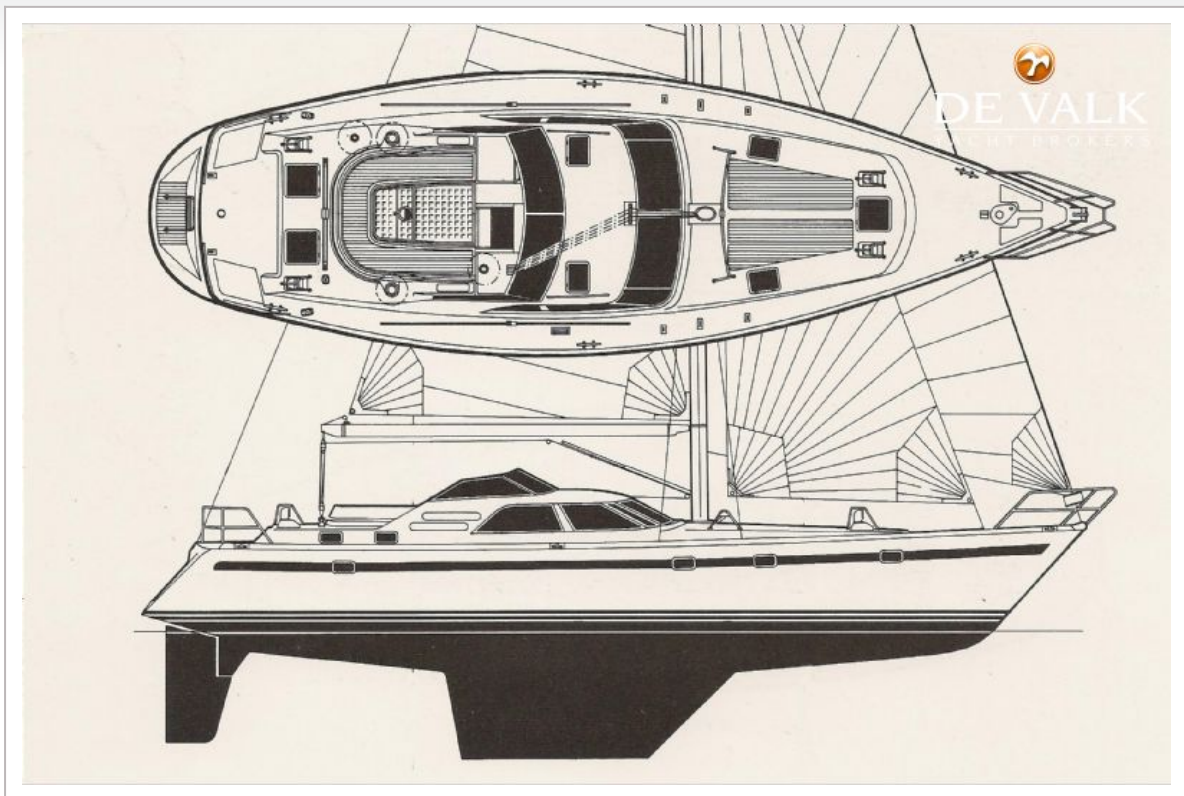
## TASWELL 49 AS DECK SALON



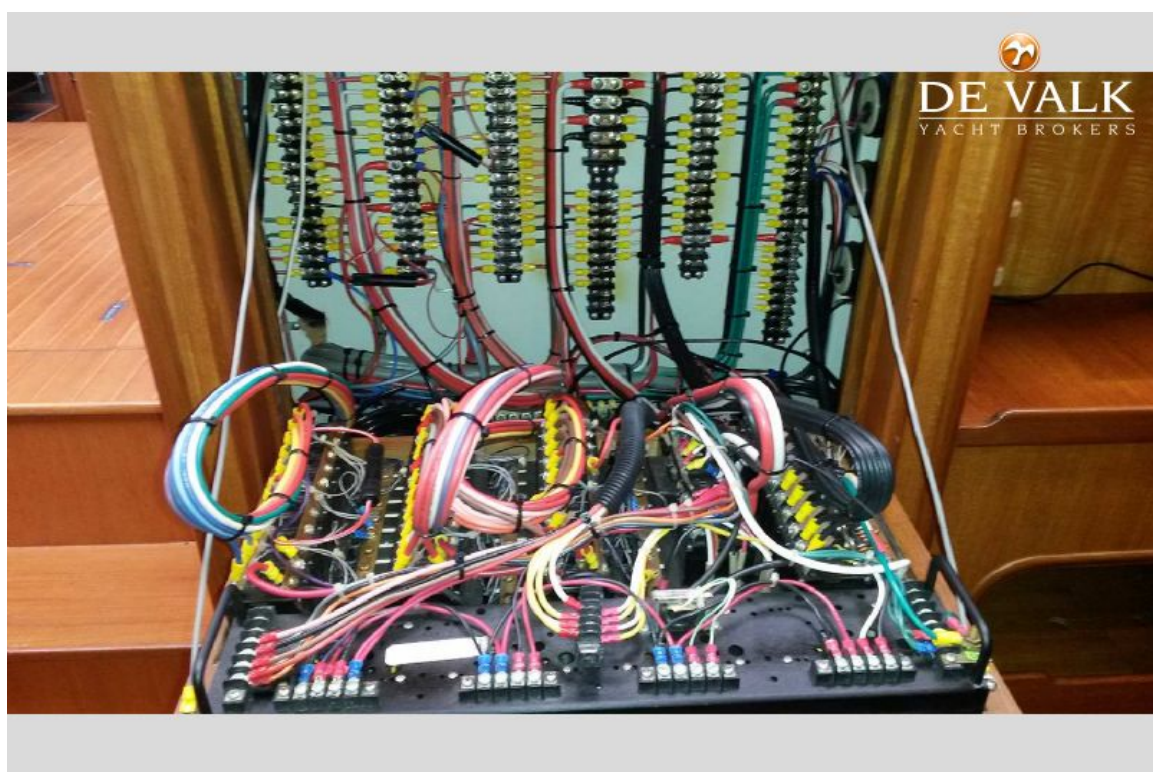
## TASWELL 49 AS DECK SALON



# TASWELL 49 AS DECK SALON



## TASWELL 49 AS DECK SALON



## TASWELL 49 AS DECK SALON

