



DE VALK  
YACHT BROKERS



## DUFOUR 385 GRAND LARGE



DE VALK  
YACHT BROKERS

# DUFOUR 385 GRAND LARGE

## BROKER'S COMMENTS

Style, performance, easy to handle and comfort, this Dufour 385 Grand Large has it all. The new line of Dufour, inspired by Grand Soleil, was the next logical step for known yard. Improved styling, performance and newer construction techniques makes this new range so popular. The two cabin layout offers great comfort onboard and has ample stowage space to boot. With lots of good options like electric winches, stronger engine, full set of nav aids and extra sails, this 385 is ready to go for another season of great sailing fun. From first and only private owner.

*Marc Weijnenberg*

## SPECIFICATIONS

<b>Dimensions</b>	11.72 x 3.93 x 1.76 (m)	<b>Builder</b>	Dufour Yachts SA
<b>Built</b>	2006	<b>Cabins</b>	2
<b>Material</b>	GRP	<b>Berths</b>	6
<b>Engine(s)</b>	1 x Volvo Penta D2-40B diesel	<b>Hp/Kw</b>	39.00 (hp), 28.67 (kw)
<b>Asking price</b>	sold (VAT )	<b>Lying</b>	at sales office

## CONTACT

<b>Sales office</b>	De Valk Sint Annaland	<b>Telephone</b>	+31 166 601 000
<b>Address</b>	Koelhuisweg 4 4697 RM Sint Annaland The Netherlands	<b>E-mail</b>	sintannaland@devalk.nl

## DISCLAIMER

These particulars are given in good faith as supplied but cannot be guaranteed.



# DUFOUR 385 GRAND LARGE

## GENERAL

<b>Model</b>	DUFOUR 385 GRAND LARGE
<b>Type</b>	sailing yacht
<b>LOA (m)</b>	11,72
<b>LWL (m)</b>	9,84
<b>Beam (m)</b>	3,93
<b>Draft (m)</b>	1,76
<b>Air draft (m)</b>	16,20
<b>Headroom (m)</b>	1,98
<b>Year built</b>	2006
<b>Launched</b>	2007
<b>Builder</b>	Dufour Yachts SA
<b>Country</b>	France
<b>Designer</b>	Umberto Felci / Patrick Roseo
<b>Displacement (t)</b>	6,98
<b>Ballast (tonnes)</b>	cast iron 1,95
<b>CE norm</b>	A
<b>Hull material</b>	GRP
<b>Hull colour</b>	white
<b>Hull shape</b>	round-bilged
<b>Keel type</b>	fin keel with bulb
<b>Superstructure material</b>	GRP
<b>Deck material</b>	GRP
<b>Deck finish</b>	teak
<b>Superstructure deck finish</b>	anti-slip moulded in
<b>Cockpit deck finish</b>	teak
<b>Antifouling (year)</b>	2016
<b>Window frame</b>	aluminium
<b>Window material</b>	polycarbonate
<b>Deckhatch</b>	yes
<b>Portholes</b>	aluminium



# DUFOUR 385 GRAND LARGE

<b>Fuel tank (litre)</b>	polyethylene 160
<b>Freshwater tank (litre)</b>	polyethylene 320
<b>Blackwater tank (litre)</b>	polyethylene
<b>Blackwater tank extraction</b>	deck extraction + uw line
<b>Wheel steering</b>	cable steering 2 x Whitlock
<b>Emergency tiller</b>	yes
<b>More info on hull</b>	uwbody 5 layers epoxy coating from new
<b>Extra info</b>	Vaccum injected and bagging is used for extra quality in construction and finishing.

## ACCOMMODATION

<b>Cabins</b>	2
<b>Berths</b>	6
<b>Interior</b>	mahogany
<b>Floor</b>	teak and holly
<b>Saloon</b>	yes
<b>Headroom saloon (m)</b>	1,98
<b>Heating</b>	diesel ducted hot air Webasto
<b>Chart table</b>	yes
<b>Dinette</b>	yes
<b>Dinette to convert into berth</b>	yes
<b>Galley</b>	yes
<b>Countertop</b>	plastic
<b>Sink</b>	stainless steel 2 x
<b>Cooker</b>	calor gas Eno 2 burner
<b>Oven</b>	Eno
<b>Fridge</b>	12v Isotherm
<b>Hot water system</b>	220V + engine Quick 20 ltr
<b>Water pressure system</b>	electrical
<b>Owners cabin</b>	double bed Forward / voor / vorne
<b>Bed length (m)</b>	2,35 x 1,40



# DUFOUR 385 GRAND LARGE

Wardrobe	hanging and shelves
Bathroom	separate I
Toilet	shared
Toilet system	manual
Wash basin	in the bathroom
Shower	separate
Guest cabin 1	double bed Aft / achter / hinten
Bed length (m)	1,95 x 1,35
Wardrobe	hanging and shelves

## MACHINERY

No of engines	1
Make	Volvo Penta
Type	D2-40B
HP	39,00
kW	28,67
Fuel	diesel
Year installed	2006
Maximum speed (kn)	7
Cruising speed (kn)	6
Consumption (l/hr)	3
Engine hours	500
Engine cooling system	freshwater heat exchanger
Drive	sail-drive
Engine controls	bowden cable
Gearbox	mechanical
Exhaust	watercooled
Propeller type	folding
Propeller blades	3
Manual bilge pump	1 x
Electric bilge pump	1 x



# DUFOUR 385 GRAND LARGE

<b>Electrical installation</b>	12/220v
<b>Batteries</b>	2 x 80amp (winches)
<b>Start battery</b>	1 x 60amp
<b>Service battery</b>	3 x 95amp
<b>Battery monitor</b>	Victron
<b>Battery charger</b>	Victron 25amp
<b>Diode battery combiners</b>	yes
<b>Shorepower</b>	with cable
<b>Extra info</b>	Saildrive seal 2014 extra 12/220v sockets

## NAVIGATION

<b>Compass</b>	2 x Plastimo Olympic 135
<b>Electric compass</b>	via autopilot
<b>Depth sounder</b>	with repeater Raymarine ST60 Tridata
<b>Log</b>	Raymarine ST60 Tridata
<b>Windset</b>	with repeater Raymarine ST60
<b>VHF</b>	with cockpit connection Simrad
<b>Autopilot</b>	Raymarine ST6002
<b>Rudder angle indicator</b>	via autopilot
<b>GPS</b>	Raymarine
<b>Radar/plotter</b>	with E80 cockpit repeater Raymarine E120
<b>Navtex</b>	ICS Nav6
<b>Electronic chart(s)</b>	1 x
<b>AIS transponder</b>	yes

## EQUIPMENT

<b>Sprayhood</b>	yes
<b>Cockpit cover</b>	yes
<b>Sun awning</b>	yes
<b>Winter cover</b>	for cockpit
<b>Cockpit table</b>	yes



# DUFOUR 385 GRAND LARGE

Bathing platform	yes
Boarding ladder	yes
Transom door	yes
Deck shower	hot+cold
Anchor	Delta
Anchor chain	yes
Windlass	electrical Quick
Sea railing	stainless steel
Grab rail (superstructure)	stainless steel
Railing side opening gates	2 x
Pushpit	yes
Pulpit	yes
Life raft	container
Life raft (pers)	6 persons
Last life raft survey	valid till 2019
Lifebuoy	1 x
Radar reflector	Tri-Lens
Fenders	yes
Mooring lines	yes
Radio-cd player	Sony
Cockpit speakers	yes
Speakers in salon	yes
Extra info	3 color masthead light

## RIGGING

Rigging	sloop
Standing rigging	wire
Brand mast	Sparcraft
Material mast	aluminium
Spreaders	2 x
Mainsail	Hagoort Sails 2016



# DUFOUR 385 GRAND LARGE

<b>Mainsail cover</b>	+ Lazy Jacks
<b>High aspect</b>	Vd Werff Sails
<b>Genoa</b>	Elvstrom 2006
<b>Genoa furler</b>	Profurl
<b>Genoa cover</b>	yes
<b>Reefing System</b>	quick-one-line-reefing
<b>Boomvang</b>	mechanical
<b>Genoa sheetwinches</b>	electric 2 x Harken 44ST
<b>Halyard winches</b>	2 x Harken 32ST
<b>Spi-pole</b>	aluminium





# DUFOUR 385 GRAND LARGE



# DUFOUR 385 GRAND LARGE



# DUFOUR 385 GRAND LARGE



# DUFOUR 385 GRAND LARGE



# DUFOUR 385 GRAND LARGE



# DUFOUR 385 GRAND LARGE



# DUFOUR 385 GRAND LARGE



# DUFOUR 385 GRAND LARGE





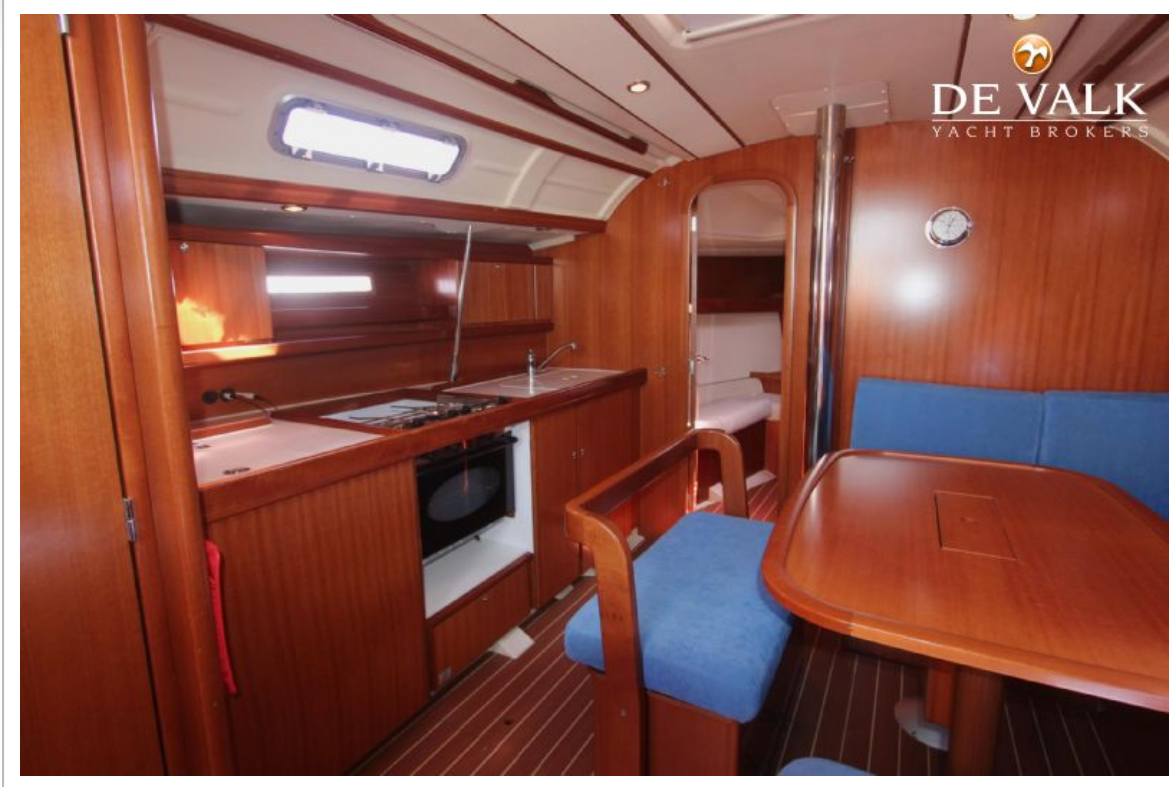
# DUFOUR 385 GRAND LARGE



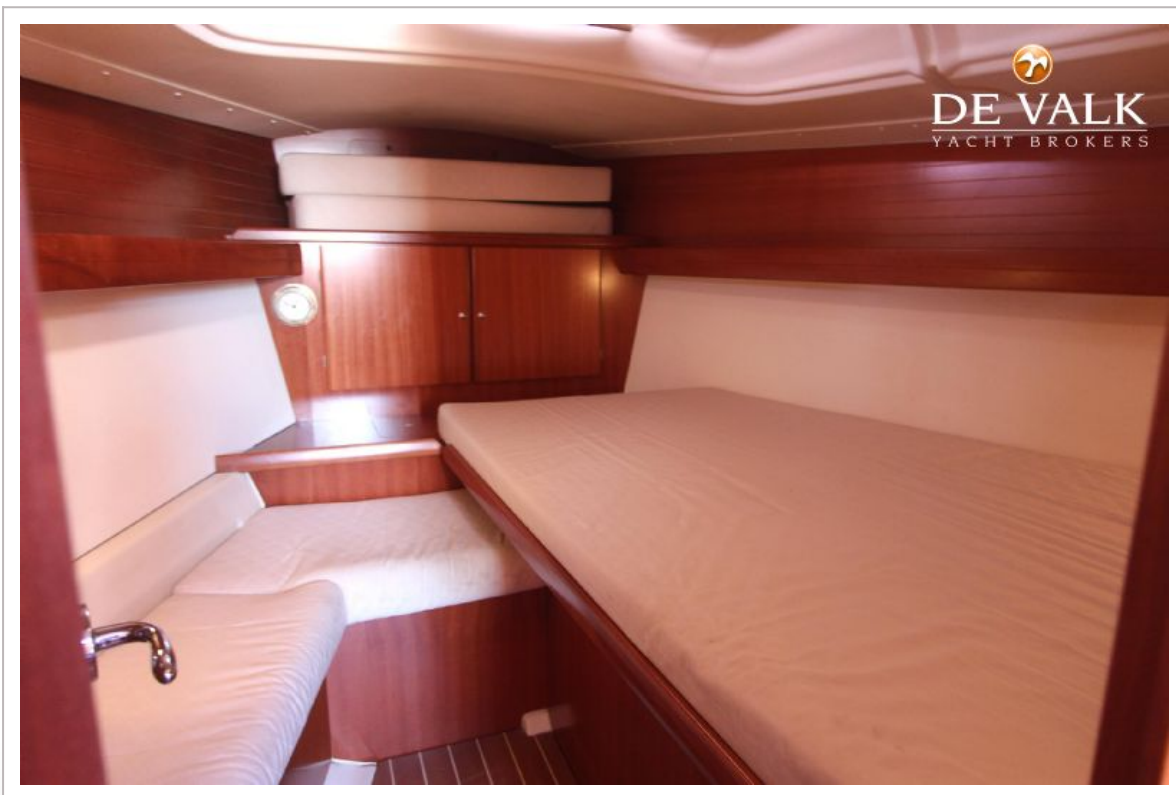
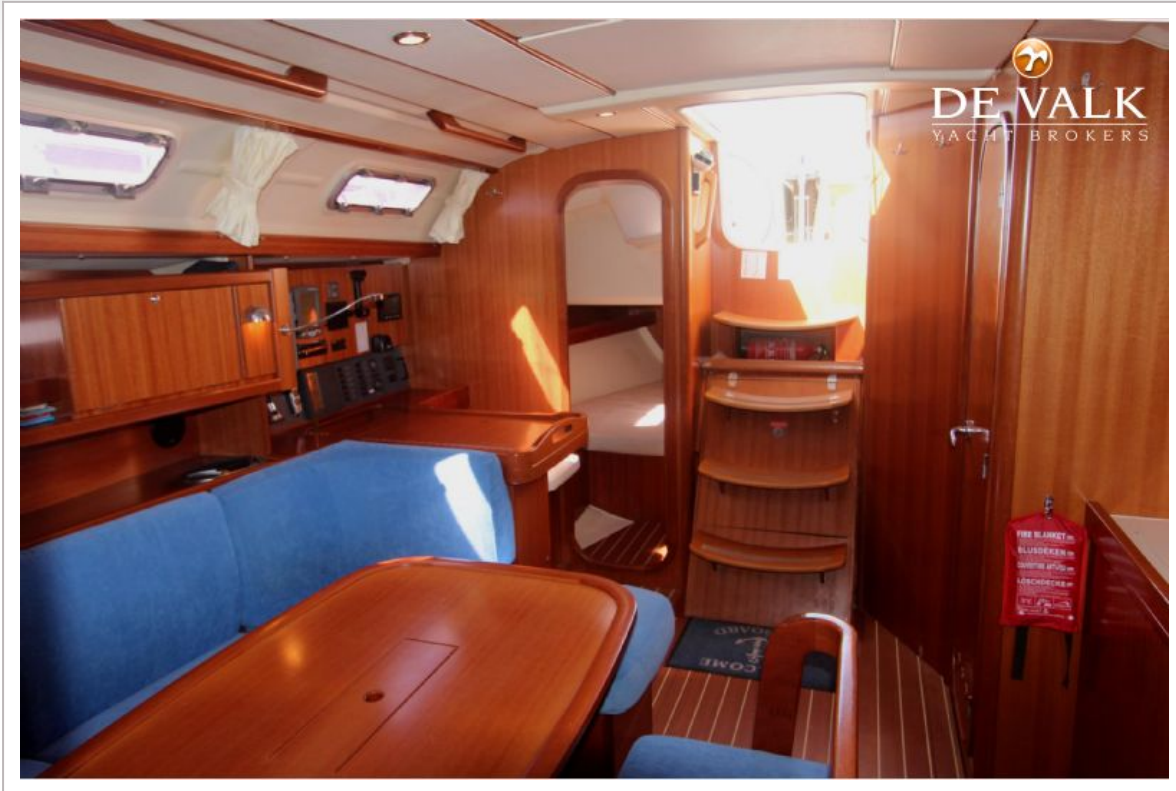
# DUFOUR 385 GRAND LARGE



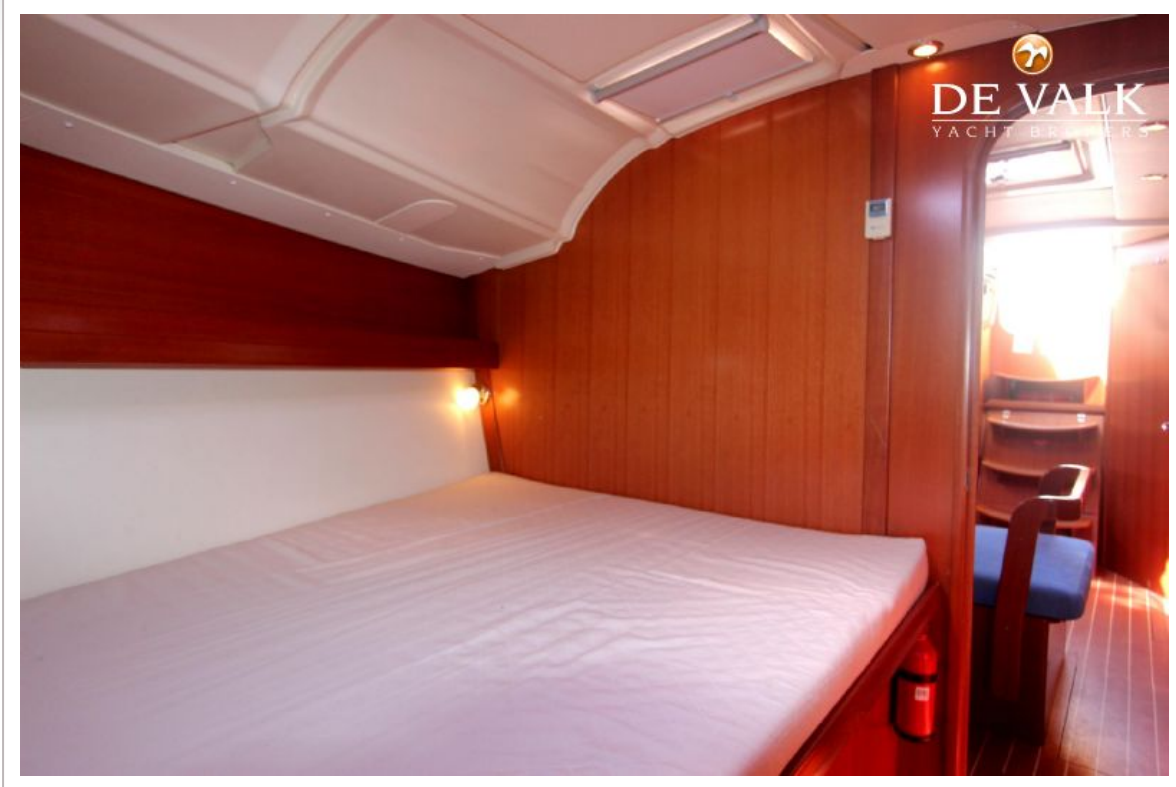
# DUFOUR 385 GRAND LARGE



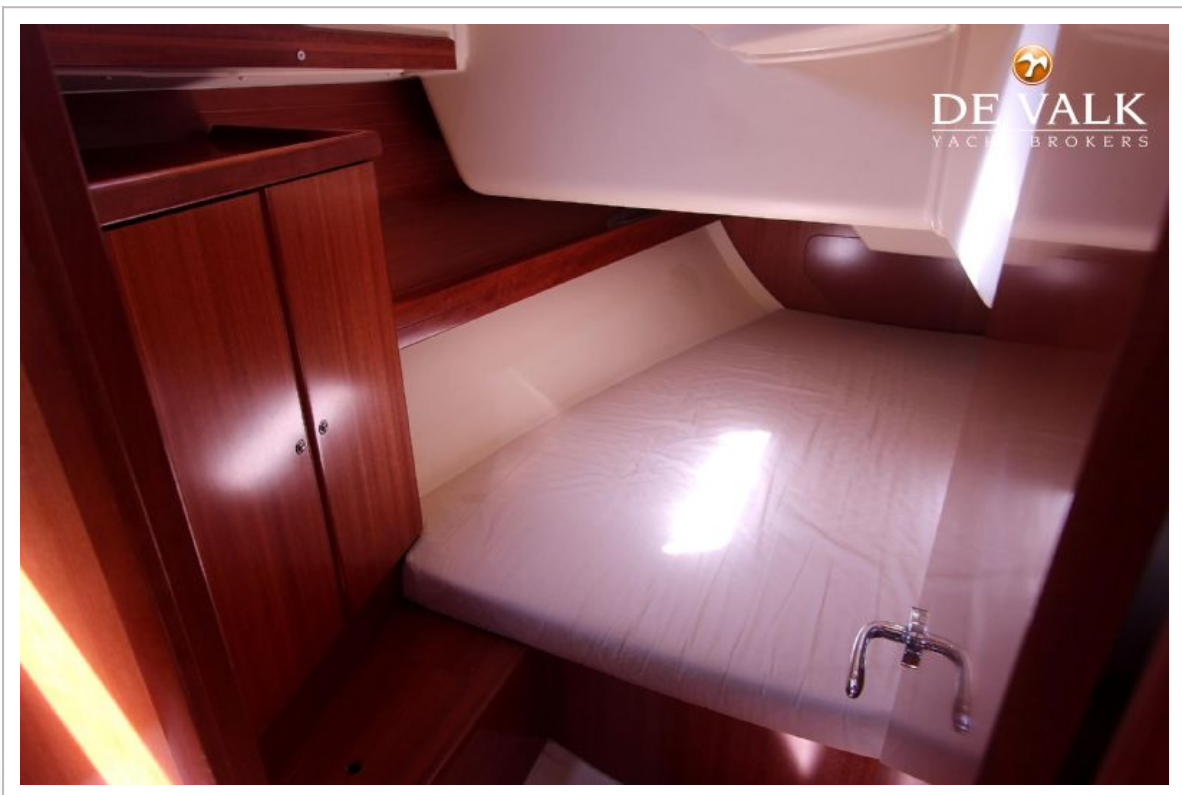
# DUFOUR 385 GRAND LARGE



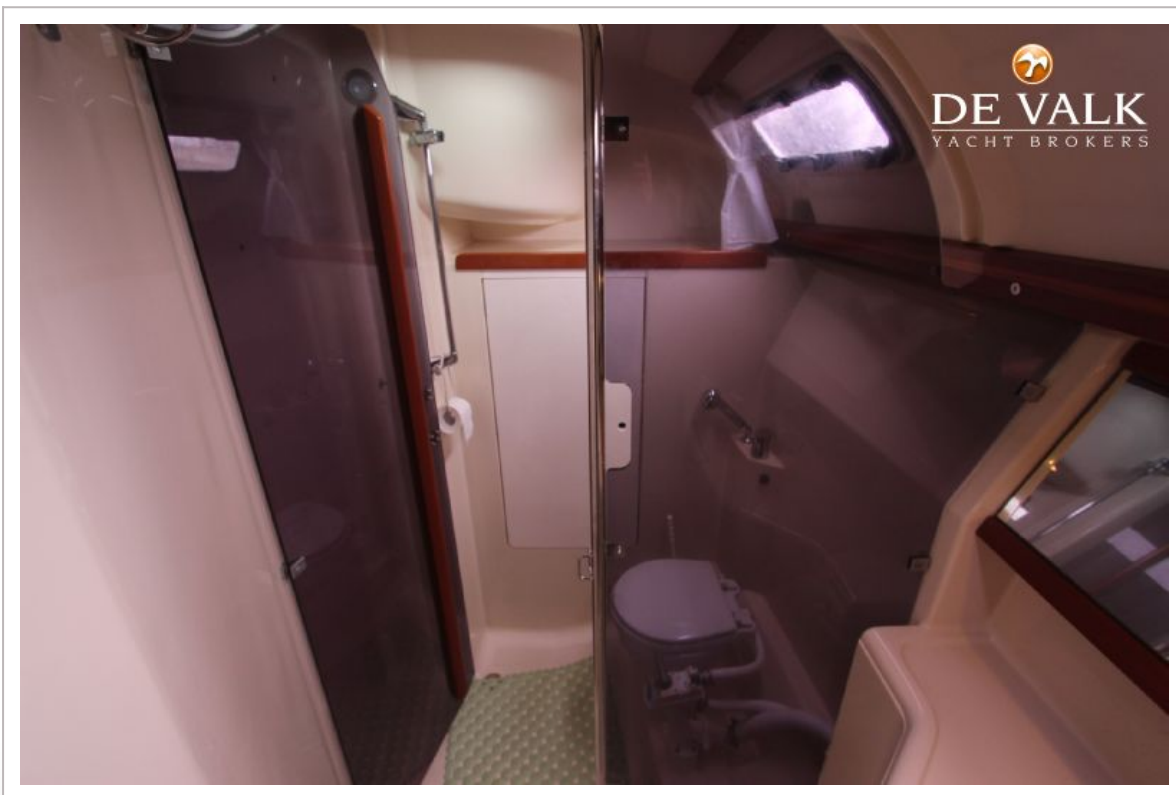
# DUFOUR 385 GRAND LARGE



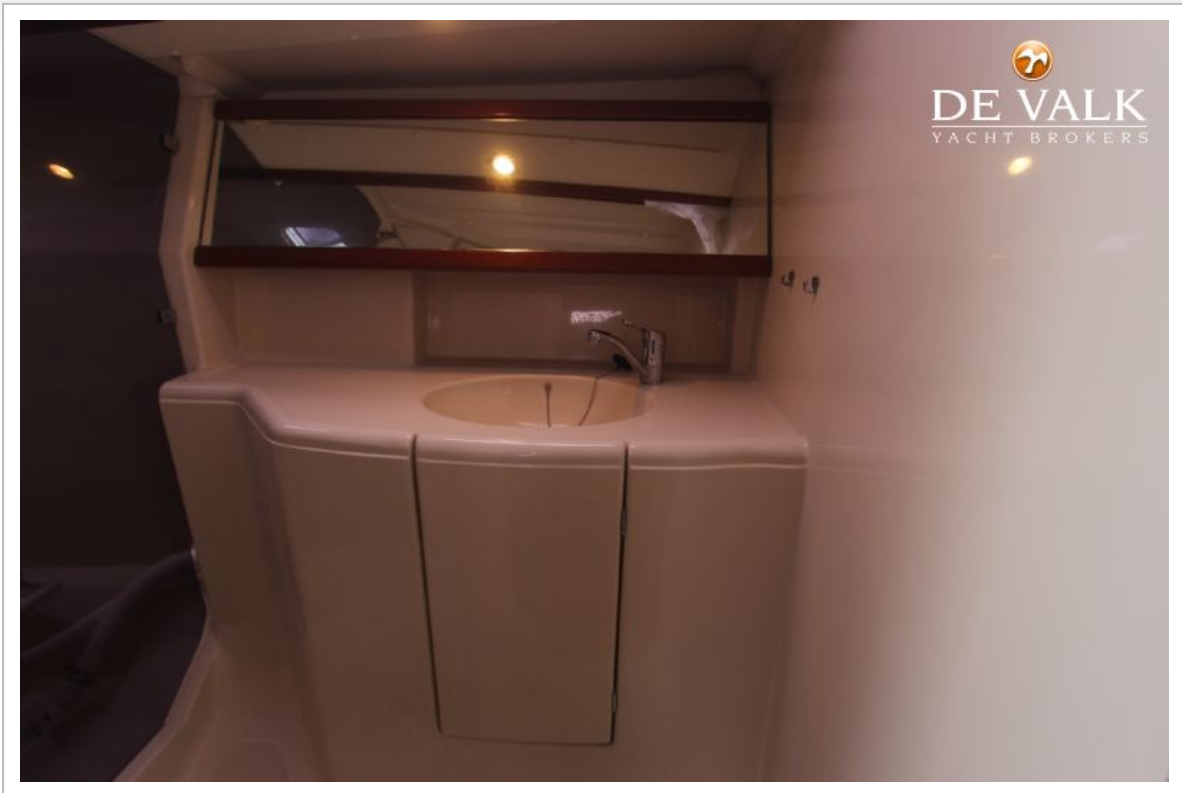
# DUFOUR 385 GRAND LARGE



# DUFOUR 385 GRAND LARGE

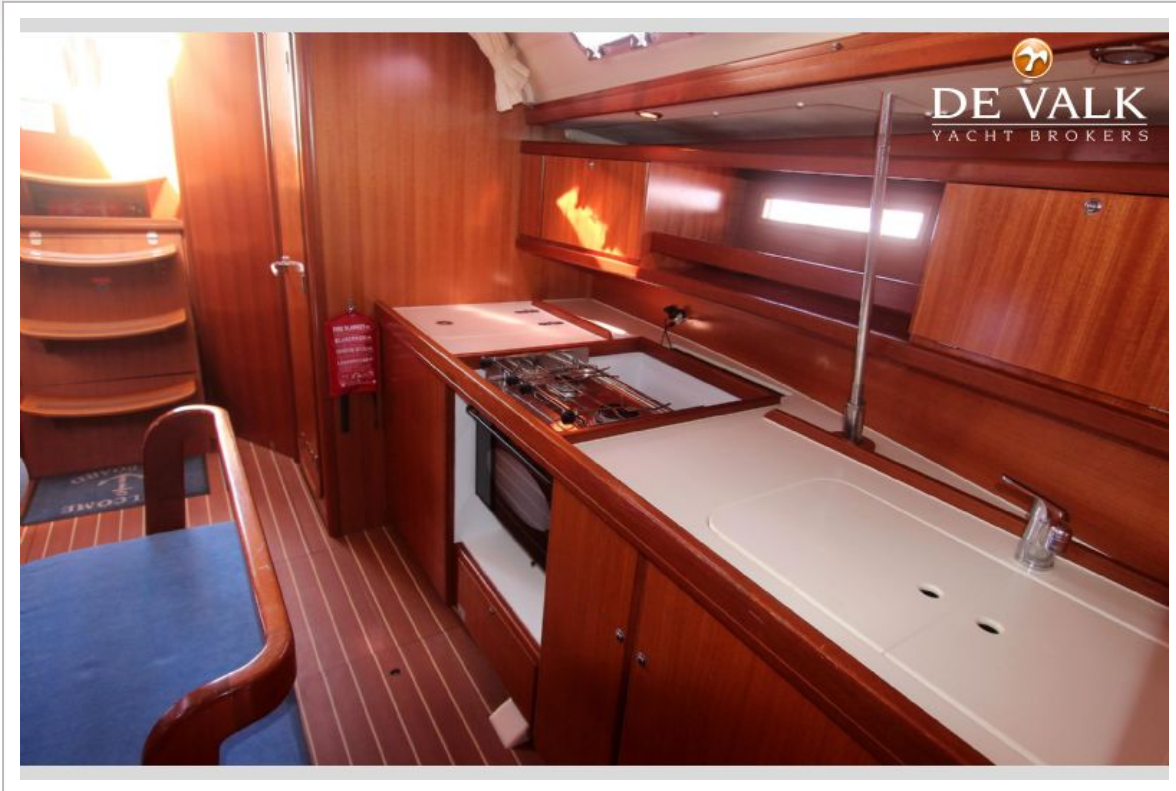


# DUFOUR 385 GRAND LARGE

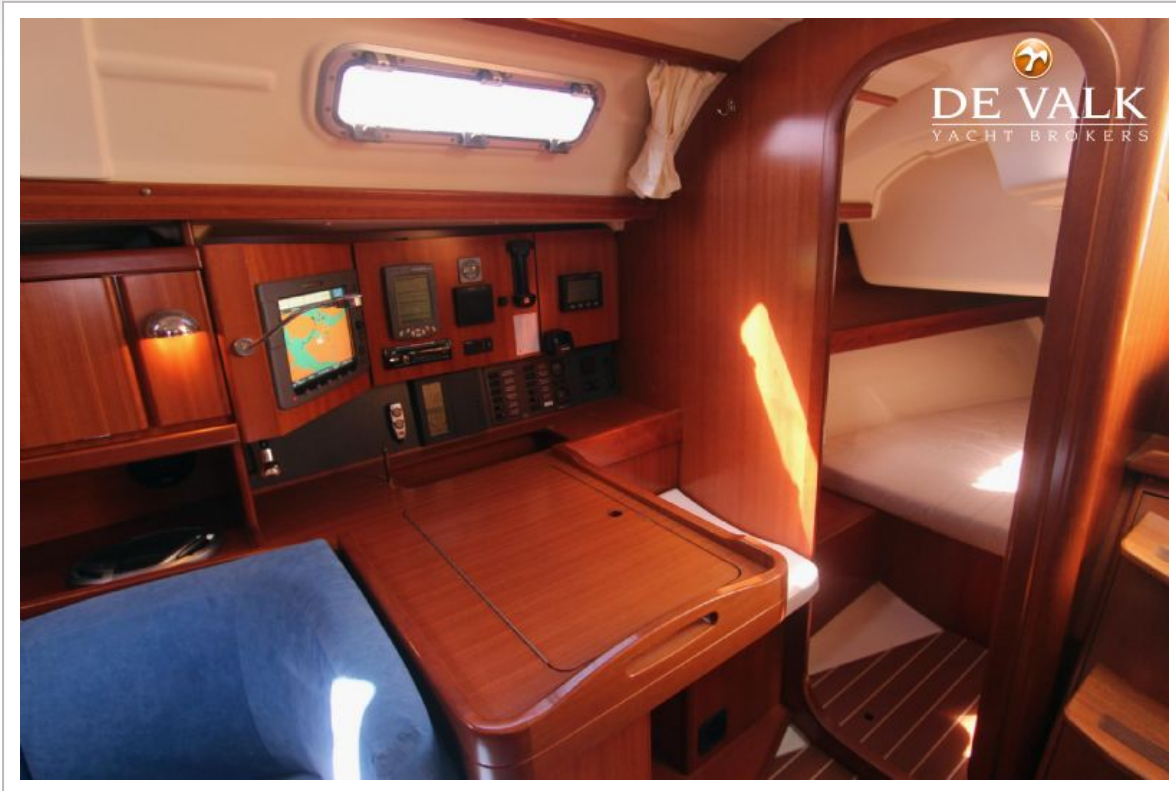




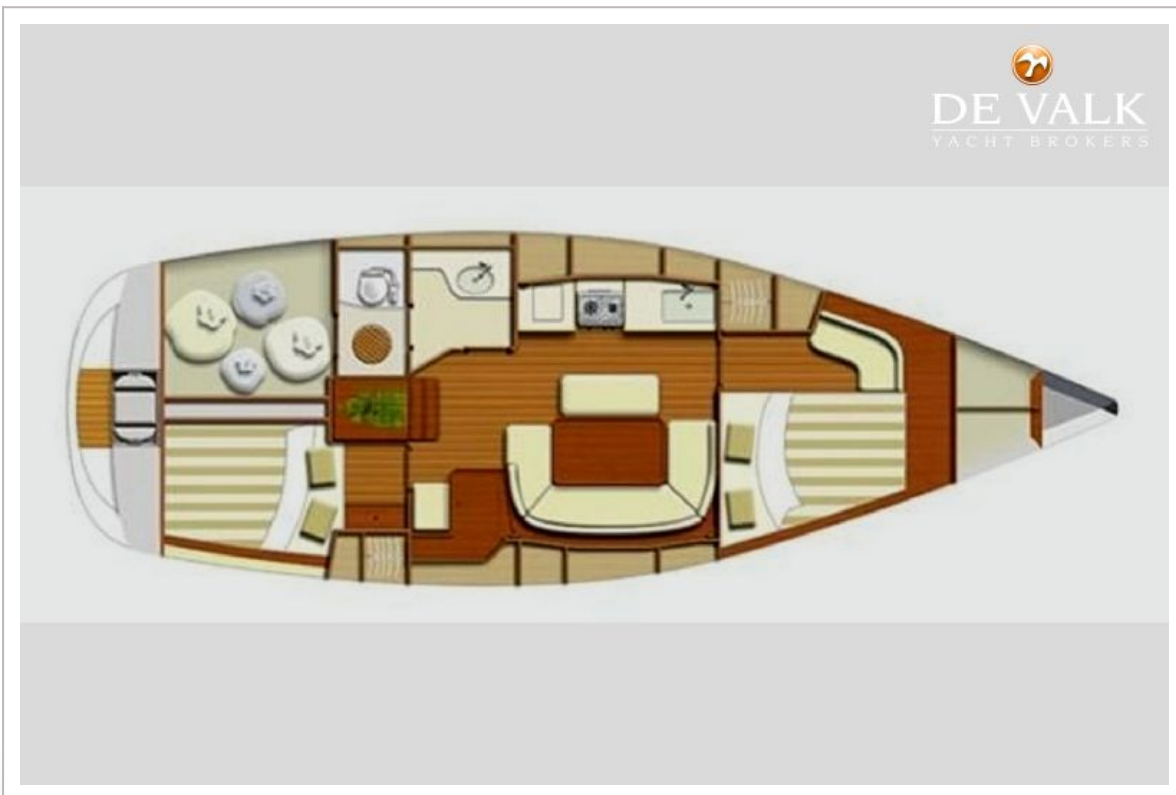
# DUFOUR 385 GRAND LARGE



# DUFOUR 385 GRAND LARGE



# DUFOUR 385 GRAND LARGE



# DUFOUR 385 GRAND LARGE



# DUFOUR 385 GRAND LARGE



# DUFOUR 385 GRAND LARGE

