



FAIRLINE SQUADRON 42

FAIRLINE SQUADRON 42

BROKER'S COMMENTS

This Fairline Squadron 42 is very well maintained and with her foldable cockpit sofa, big flybridge, two cabins with two bathrooms she offers a very comfortable on board living for friends and family. This Fairline Squadron 42 has two strong diesel engines and a proportional bow and stern thruster so you don't have to worry about the maneuverability. Contact us to make an appointment on board and see for yourself what a beauty this is!

Joris van de Rijt

SPECIFICATIONS

| | | | |
|---------------------|-----------------------------------|----------------|---------------------------------|
| Dimensions | 12.94 x 4.22 x 0.85 (m) | Builder | Fairline Boats |
| Built | 2011 | Cabins | 2 |
| Material | GRP | Berths | 5 |
| Engine(s) | 2 x Volvo Penta D6-435 EVC diesel | Hp/Kw | 2 x 435.00 (hp), 319.73 (kw) |
| Asking price | sold (VAT) | Lying | elsewhere / Not at sales office |

CONTACT

| | | | |
|---------------------|--|------------------|------------------------|
| Sales office | De Valk Sint Annaland B.V. | Telephone | +31 (0)166 601 000 |
| Address | Koelhuisweg 4 4697 RM Sint Annaland NL | E-mail | sintannaland@devalk.nl |

DISCLAIMER

These particulars are given in good faith as supplied but cannot be guaranteed.



GENERAL

| | |
|----------------------------|----------------------|
| Model | FAIRLINE SQUADRON 42 |
| Type | motor yacht |
| LOA (m) | 12,94 |
| Beam (m) | 4,22 |
| Draft (m) | 0,85 |
| Air draft (m) | 4,84 |
| Year built | 2011 |
| Launched | 2014 |
| Builder | Fairline Boats |
| Country | United Kingdom |
| Designer | Fairline Design Team |
| Displacement (t) | 13 |
| CE norm | B |
| Hull material | GRP |
| Hull colour | white |
| Hull shape | deep-V |
| Superstructure material | GRP |
| Rubbing strake | stainless steel |
| Deck material | GRP |
| Deck finish | non-skid moulded in |
| Superstructure deck finish | non-skid moulded in |
| Cockpit deck finish | teak |
| Window frame | aluminium |
| Window material | tempered glass |
| Deckhatch | yes |
| Portholes | stainless steel |
| Flybridge | yes |
| Flybridge cover | yes |
| Radar arch | non collapsible |
| Fuel tank (litre) | 2 x 498 |



| | |
|------------------------------|---------------------------|
| Level indicator (fuel tank) | yes |
| Freshwater tank (litre) | 471 |
| Level indicator (freshwater) | yes |
| Blackwater tank (litre) | GRP |
| Level indicator (blackwater) | yes |
| Blackwater tank extraction | deck extraction + pump |
| Wheel steering | hydraulic |
| Inside helm position | yes |
| Flybridge helm position | hydraulic |
| Emergency tiller | yes |
| Extra info | Folding cockpit sofa |
| Extra info | Teak laid flybridge floor |
| Extra info | Mood lights to side deck |

ACCOMMODATION

| | |
|-------------------------|--|
| Cabins | 2 |
| Berths | 5 |
| Interior | oak Satin Oak |
| Floor | carpet |
| Open cockpit | yes |
| Saloon | yes |
| Headroom saloon (m) | yes |
| Heating | diesel ducted hot air Eberspächer D5, all cabins & heads |
| Chart table | yes |
| Sliding door to cockpit | Stainless steel |
| Galley | yes |
| Countertop | plastic |
| Sink | stainless steel |
| Cooker | induction 2-burner |
| Extractor | 12 V extractor fan |
| Microwave/oven combi | Bauknecht |



FAIRLINE SQUADRON 42

| | |
|-----------------------|--|
| Fridge | yes |
| Hot water system | 220V + engine |
| Water pressure system | electrical |
| Owners cabin | double bed Forward |
| Wardrobe | hanging/drawers/shelves |
| Bathroom | en suite |
| Toilet | In bathroom |
| Toilet system | electric |
| Wash basin | in the bathroom |
| Shower | In bathroom |
| Extra info | Internally sprung mattress |
| Guest cabin 1 | twin single Starboard |
| Wardrobe | hanging and shelves |
| Bathroom | en suite |
| Toilet | In bathroom |
| Toilet system | electric |
| Wash basin | in the bathroom |
| Shower | In bathroom |
| Extra info | Internally sprung mattresses |
| Flybridge | yes |
| Extra info | Mood lighting to cabins and galley steps |

MACHINERY

| | |
|---------------------|-------------|
| No of engines | 2 |
| Make | Volvo Penta |
| Type | D6-435 EVC |
| HP | 435 |
| kW | 319.73 |
| Fuel | diesel |
| Maximum speed (kn) | 30 |
| Cruising speed (kn) | 24 |



FAIRLINE SQUADRON 42

| | |
|--------------------------|--|
| Engine hours | 414 |
| Engine cooling system | freshwater heat exchanger |
| Drive | shaft |
| Engine controls | electrical |
| Gearbox | hydraulic |
| Bowthruster | electric Side-Power proportional |
| Sternthruster | electric Side-Power proportional |
| Exhaust | watercooled |
| Propeller type | fixed 24 x 30,5 |
| Propeller blades | 4 |
| Propeller shaft material | stainless steel |
| Shaft lubrication | water |
| Manual bilge pump | yes |
| Electric bilge pump | yes |
| Bilge alarm | yes |
| Electrical installation | 12 V / 230 V |
| Start battery | 2 x (2019) |
| Service battery | 2 x (2020) |
| Bowthruster battery | 1 x (2015) |
| Sternthruster battery | 1 x (2015) |
| Battery monitor | yes |
| Battery charger | Victron Centaur 12 V 60 A |
| Inverter | Victron Phoenix 12 V 1200 W |
| Diode battery combiners | yes |
| Shorepower | with cable |
| Trimtabs | yes |
| Extra info | 2015 sternthruster mounted with proportional joysticks |

NAVIGATION

| | |
|----------------------|-----|
| Compass | yes |
| Compass on flybridge | yes |



| | |
|------------------------|--|
| Electric compass | In autopilot |
| Depth sounder/log | Garmin GMI 10 |
| Repeater | On flybridge, speed/log, autopilot, plotter, VHF |
| VHF | Garmin GHS 101 |
| Autopilot | Garmin GHC 10 |
| Rudder angle indicator | yes |
| Radar | Garmin GMR 24 4KW |
| GPS | Garmin GPX 17X |
| Plotter | Garmin GPSMAP 5012 |
| Electronic chart(s) | yes |
| AIS receiver | yes |
| Navigation lights | yes |
| Searchlight | With remote control |

EQUIPMENT

| | |
|----------------------------|-----------------|
| Fixed windscreen | On flybridge |
| Cockpit cover | yes |
| Bimini | On flybridge |
| Window cover | yes |
| Cockpit cushions | yes |
| Bathing platform | yes |
| Boarding ladder | stainless steel |
| Transom door | 2 x |
| Deck shower | yes |
| Anchor | Delta |
| Anchor chain | yes |
| Windlass | electrical |
| Capstan | On windlass |
| Davits | Hurley H3O |
| Sea railing | stainless steel |
| Grab rail (superstructure) | stainless steel |



FAIRLINE SQUADRON 42

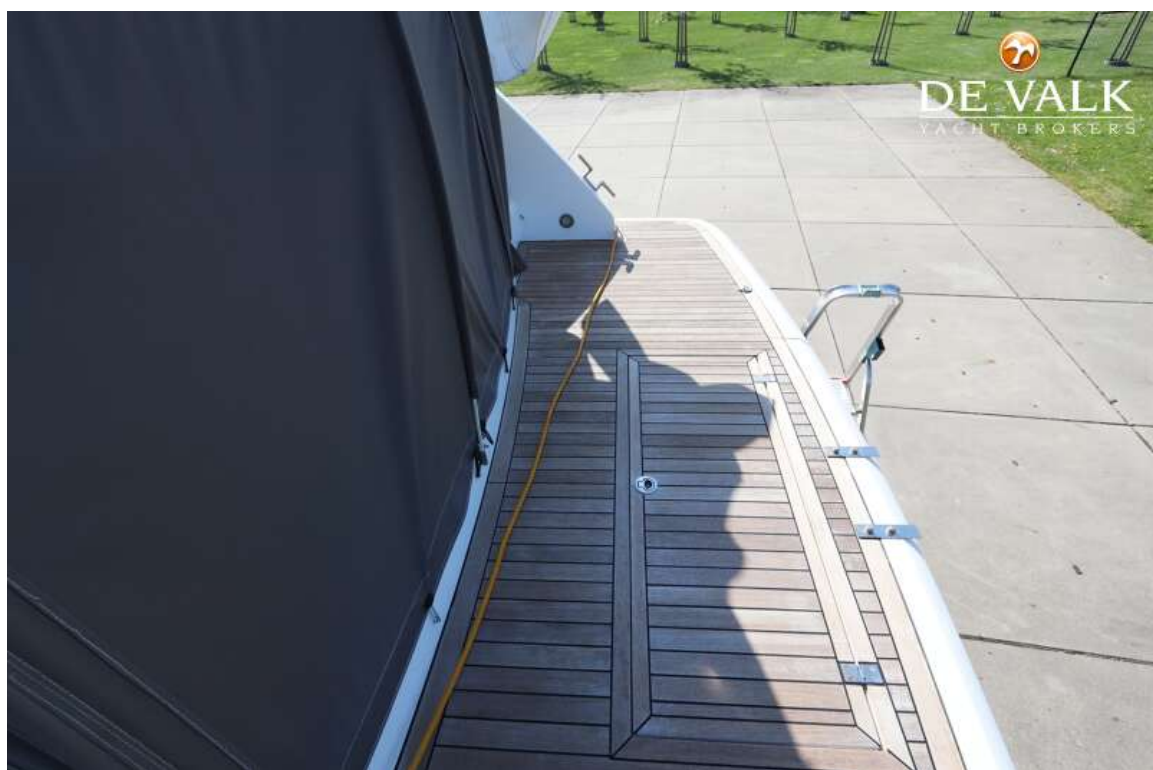
| | |
|-----------------------------|--------------------|
| Pulpit | yes |
| Wiper | yes |
| Horn | yes |
| Fenders | yes |
| Mooring lines | yes |
| TV | Popup TV in saloon |
| Radio-cd player | yes |
| DVD player | In Bose 321 |
| Surround Sound System | Bose 321 |
| Sub-woofer | yes |
| Speakers in salon | 2 x |
| Fire extinguisher | yes |
| Extinguisher in engine room | yes |
| Auto extinguisher system | yes |



FAIRLINE SQUADRON 42



FAIRLINE SQUADRON 42



FAIRLINE SQUADRON 42



FAIRLINE SQUADRON 42



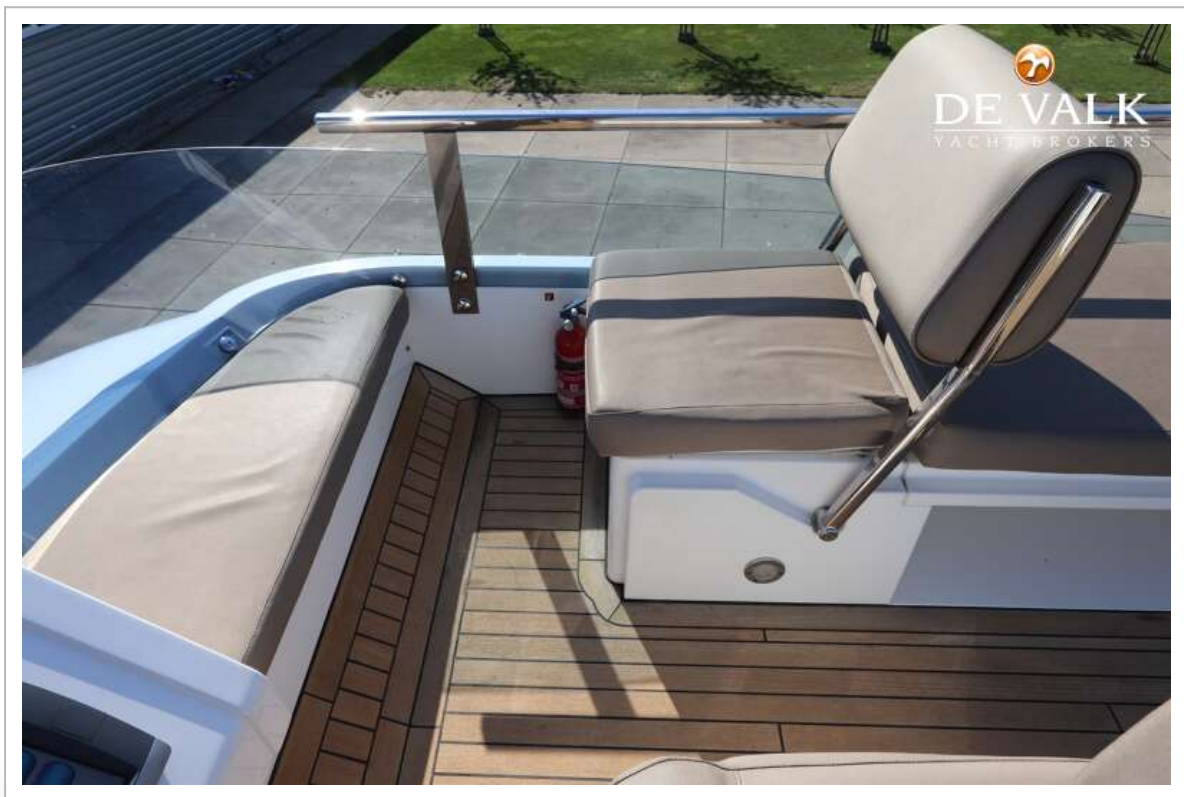
FAIRLINE SQUADRON 42



FAIRLINE SQUADRON 42



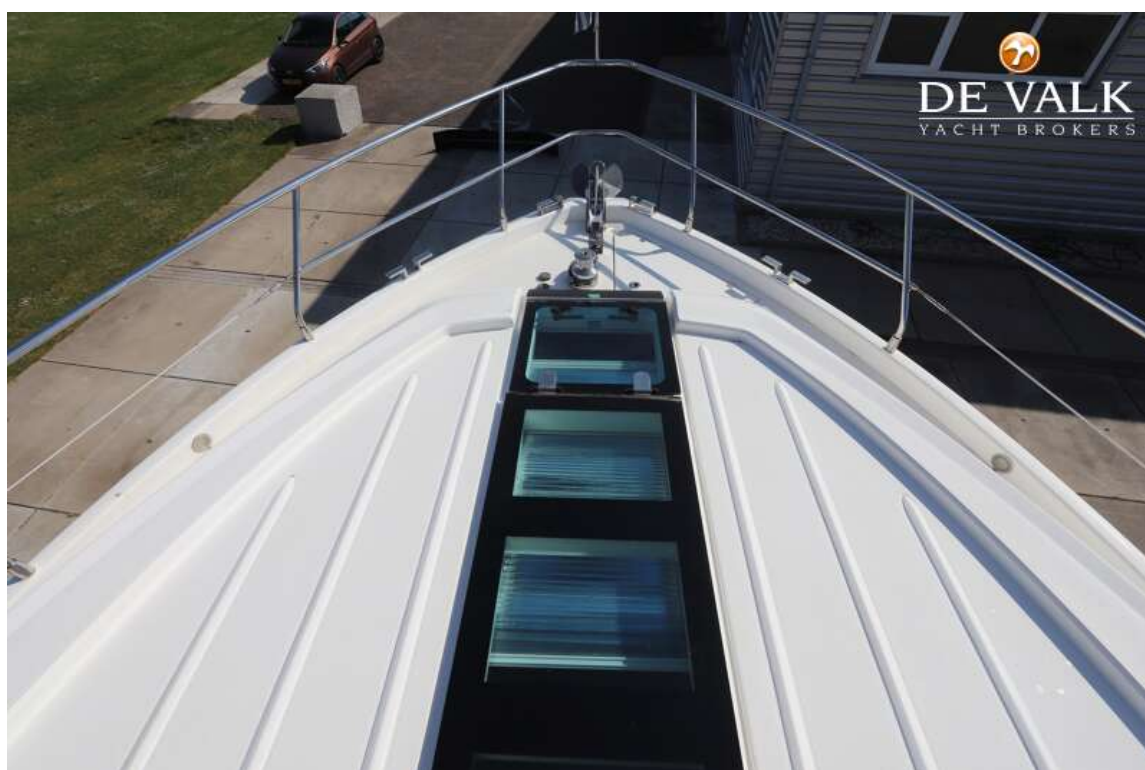
FAIRLINE SQUADRON 42



FAIRLINE SQUADRON 42



FAIRLINE SQUADRON 42



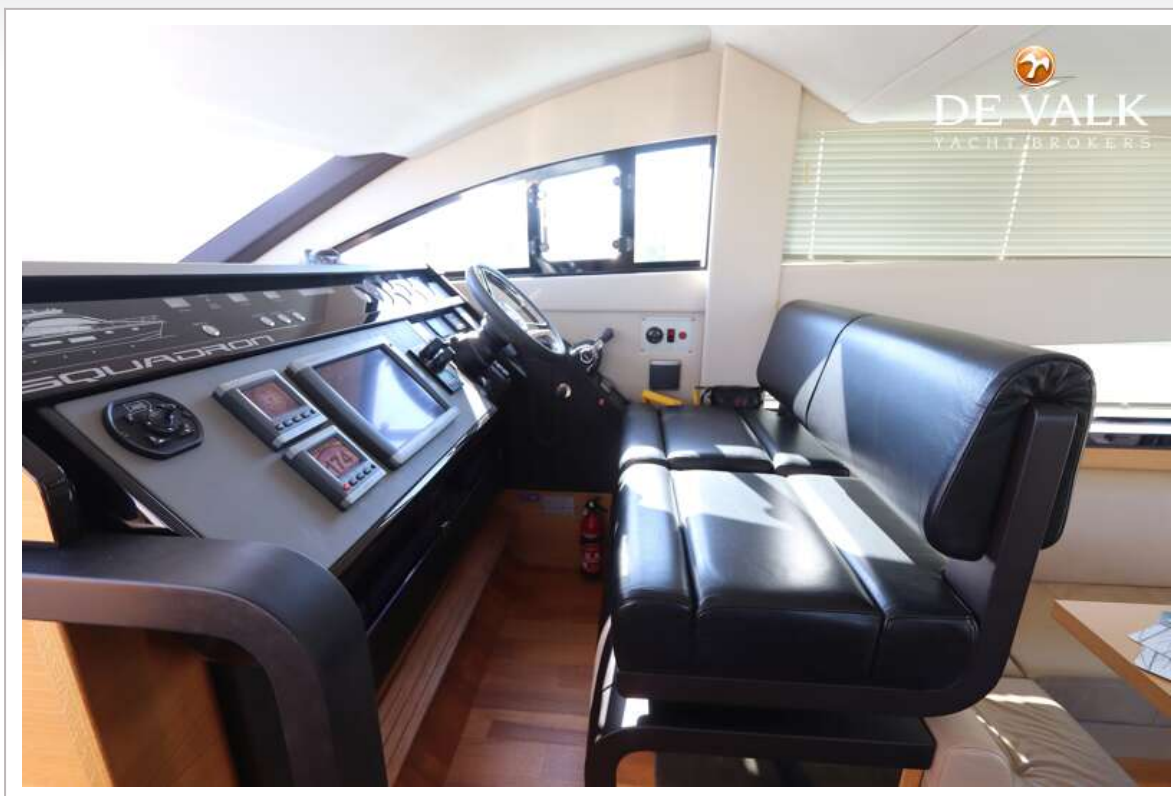
FAIRLINE SQUADRON 42



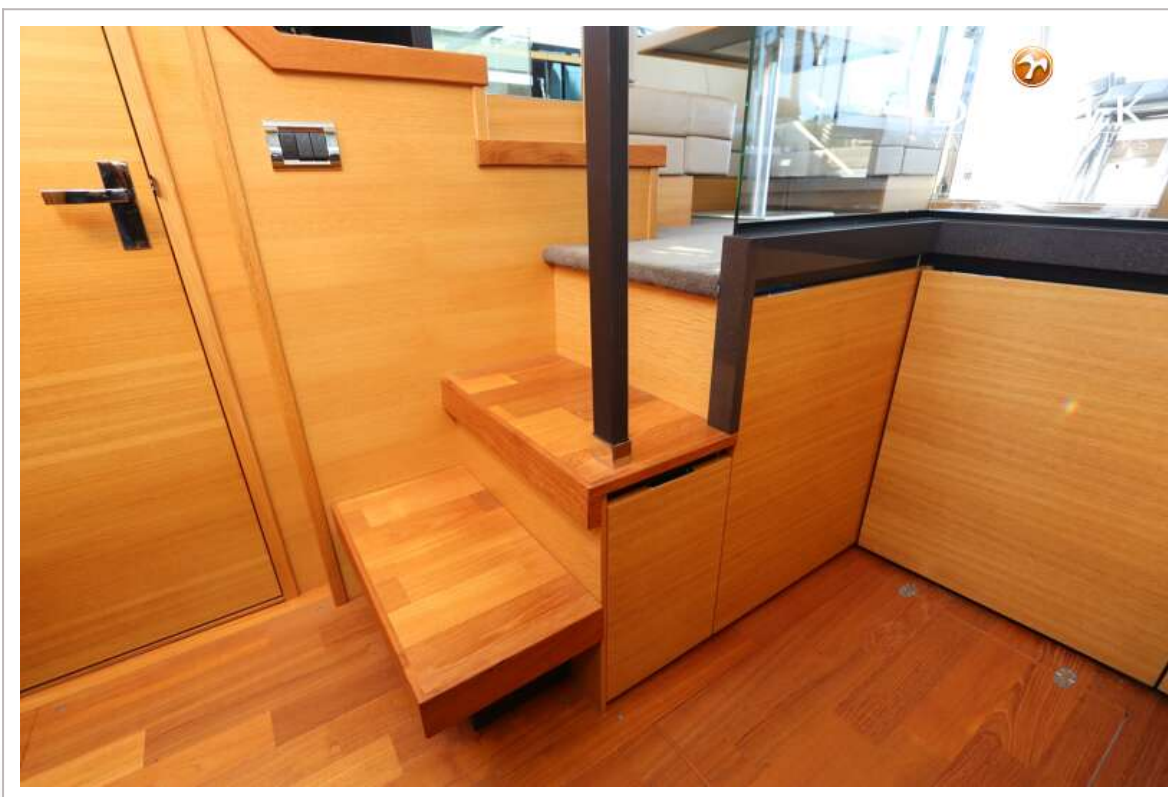




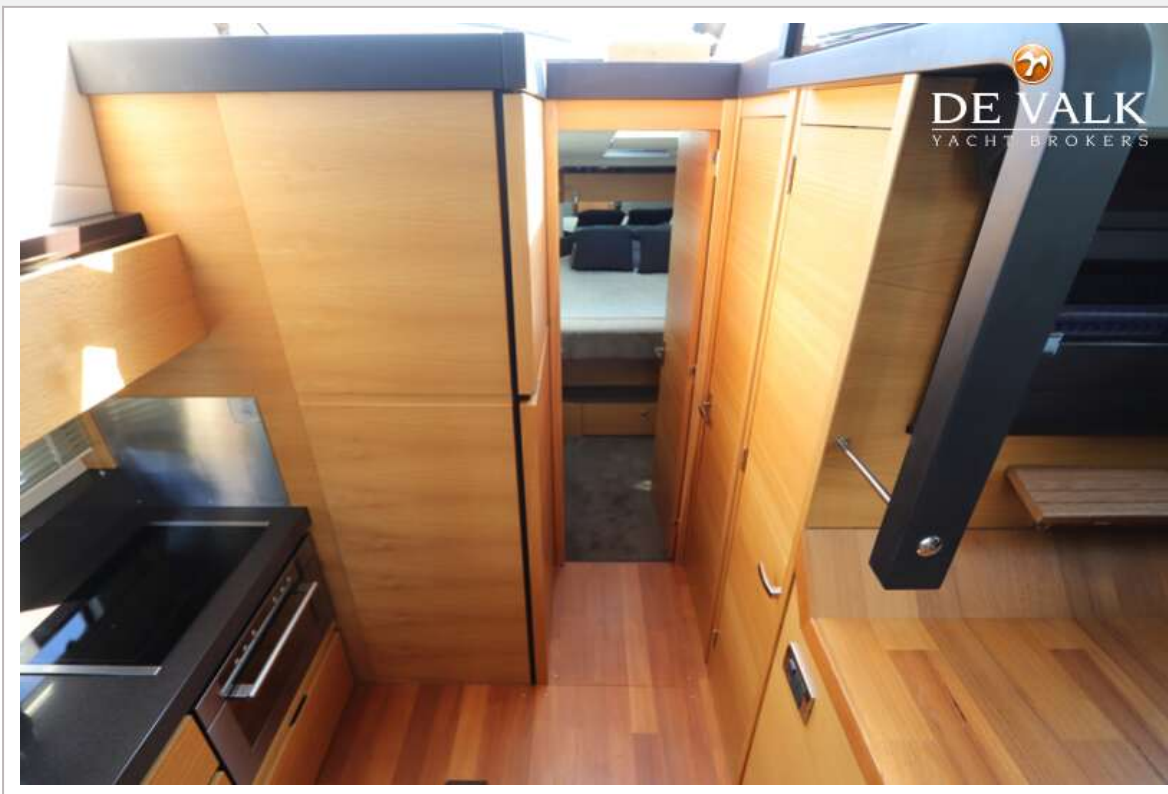
FAIRLINE SQUADRON 42



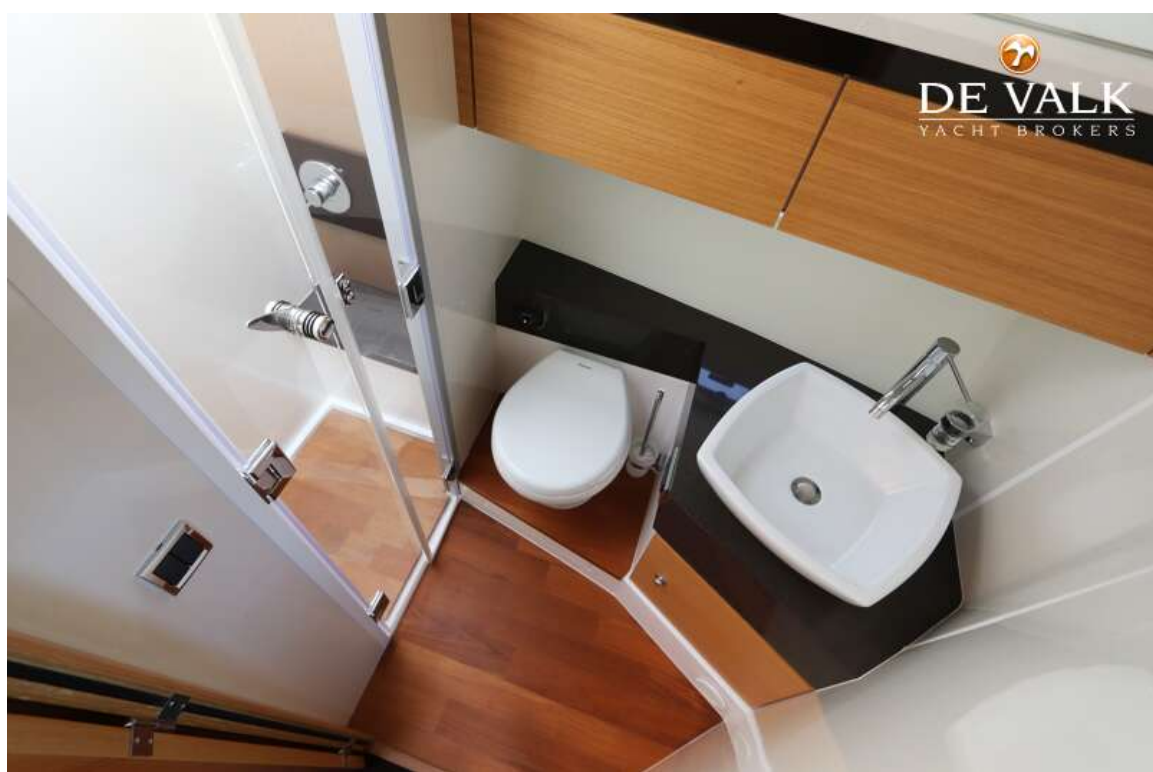
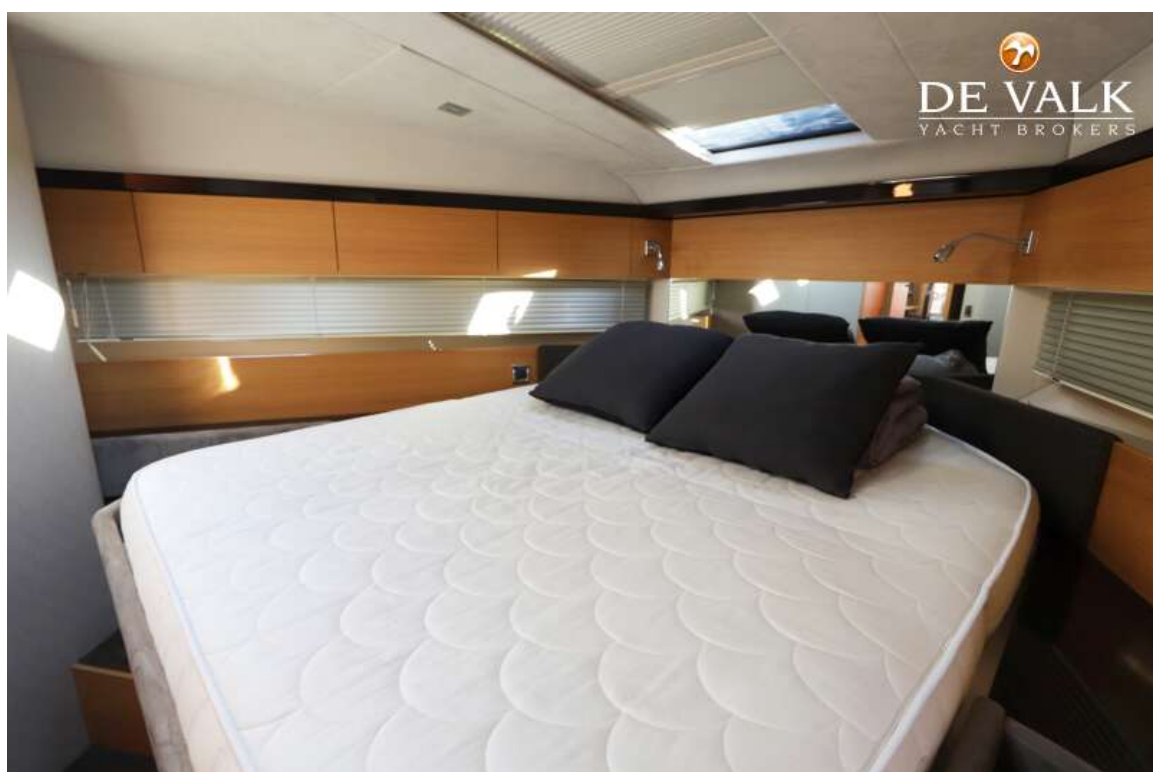
FAIRLINE SQUADRON 42

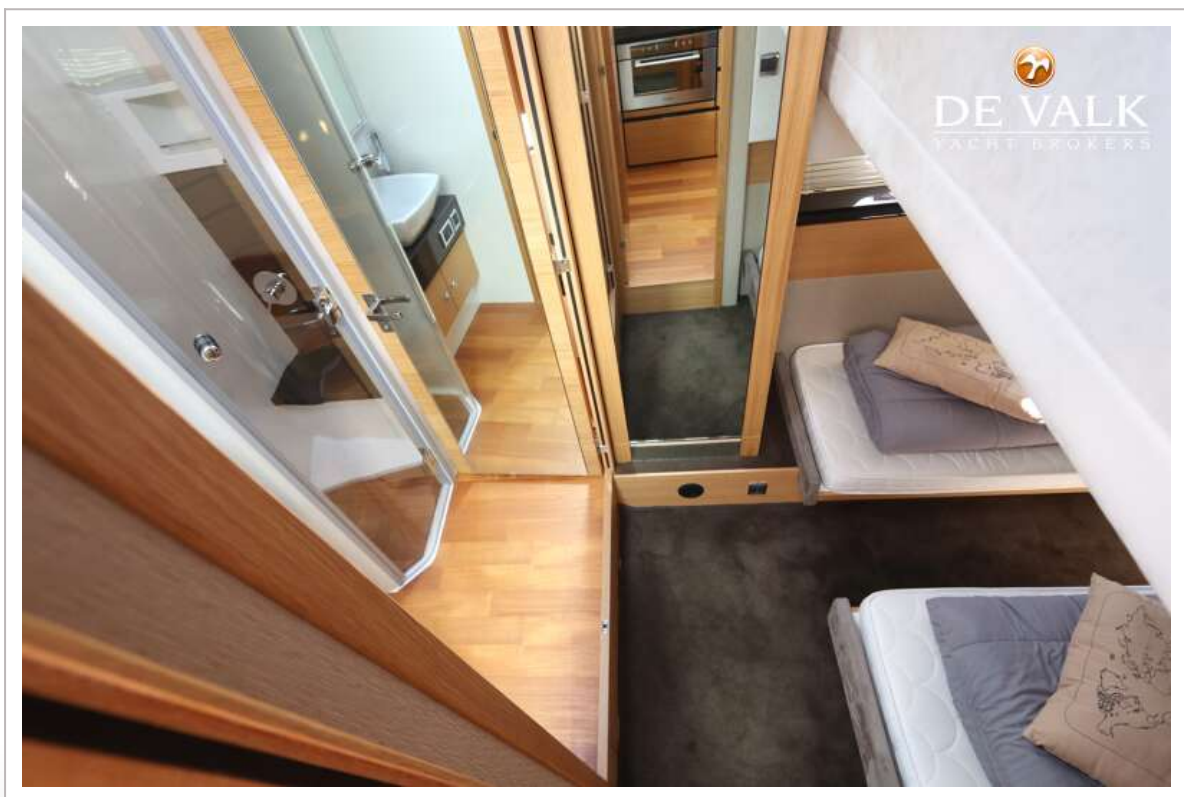
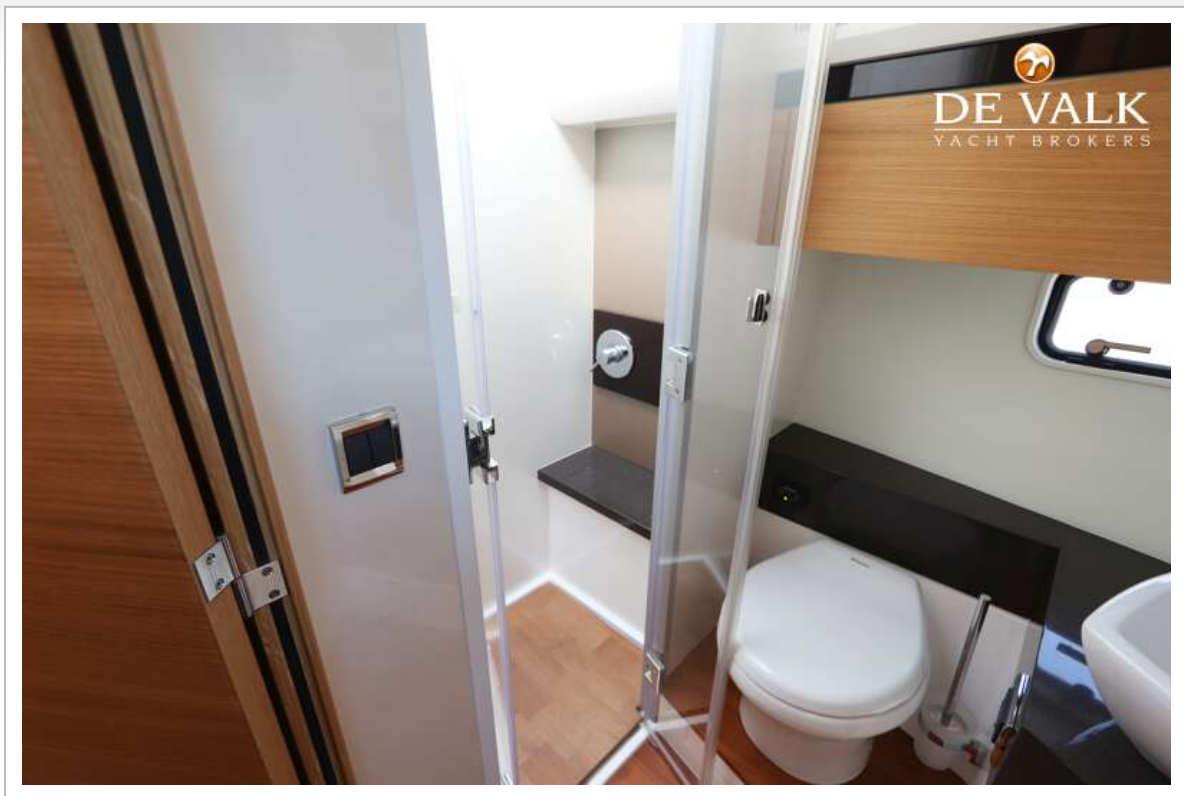


FAIRLINE SQUADRON 42



FAIRLINE SQUADRON 42





FAIRLINE SQUADRON 42



FAIRLINE SQUADRON 42







